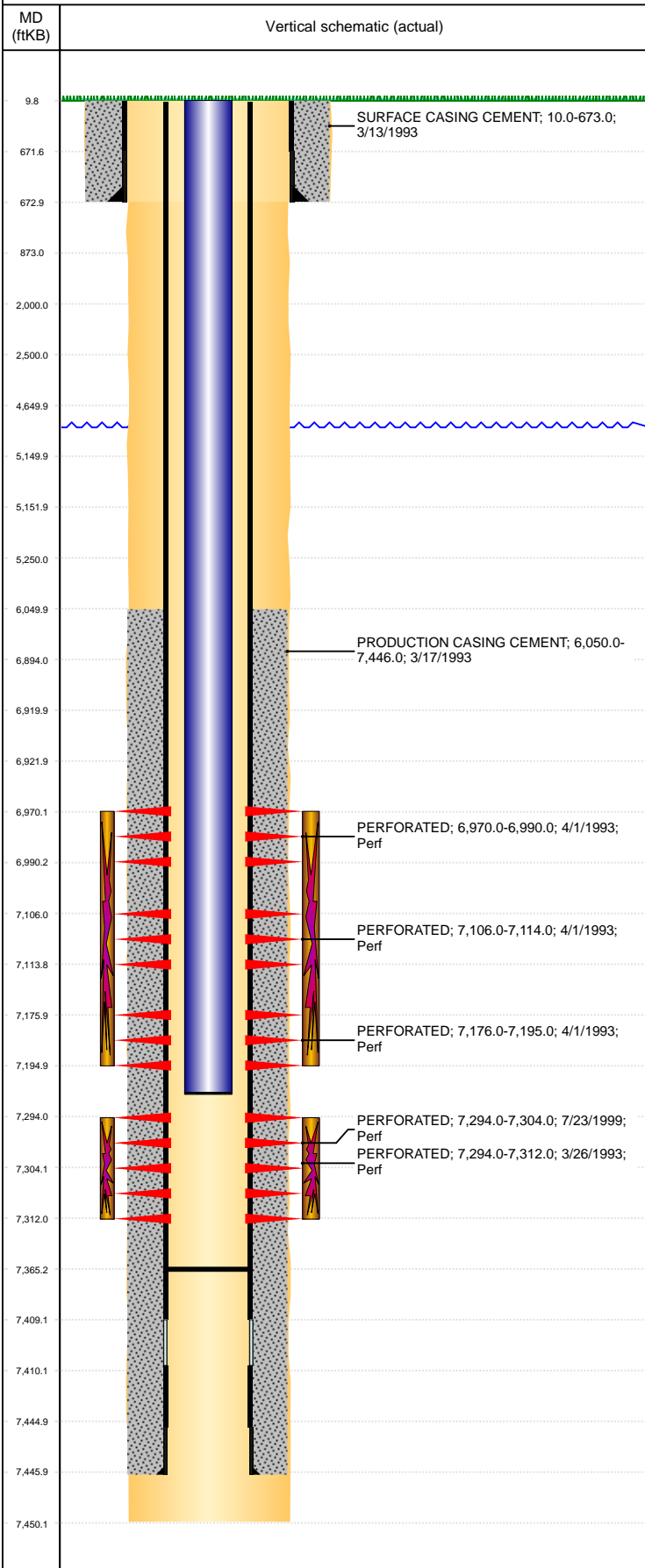


**Well Name: HSR-ONEIL 16-29**

VERTICAL, ORIGINAL HOLE, 5/23/2019 12:50:39 PM



Well Header									
API 05-123-16835		Business Unit DJ BASIN			District 15		Well Config VERTICAL		
KB - GL / MSL (ft... 10.00		Spud Date 3/13/1993		P & A Date		Well Production Status SI			SoRT No
Comment									
Surface Location (Congressional)									
Qtr 3 SE	Qtr 4 SE	Section 29	Twnshp 5	Twnsh... N	Range 66	Rng E... W	Actual Latitude (°) 40.36466790	Actual Longitude (°) -104.79593670	
Wellbore Sections									
Section Des			Size (in)			Act Top, MD (ftKB)		Act Btm, MD (ftKB)	
SURFACE			12 1/4			10		673	
PRODUCTION			7 7/8			673		7,450	
Casing Strings									
Csg Des			Run Date		OD (in)	Wt/Len (lb/ft)	Grade	Top, MD (ftKB)	MD (ftKB)
Surface			3/13/1993		8 5/8	24.00		10.0	673.0
Production			3/17/1993		4 1/2	11.60		10.0	7,446.0
Cement									
Des					Start Date		Top (ftKB)		Btm (ftKB)
SURFACE CASING CEMENT					3/13/1993		10.0		673.0
PRODUCTION CASING CEMENT					3/17/1993		6,050.0		7,446.0
Zone Statuses									
Zone Name	Status Date	Status	Fluid Type	Job				Prod Method	
NIOBRARA	4/10/1993	PR	Water	DRILLING/COMPLETION - ORIGINAL, 3/13/1993...				Flowing	
NIOBRARA	2/19/2014	PR						Flowing	
CODELL	2/19/2014	PR						Flowing	
CODELL	3/22/2017	SI							
Perforation Data									
Linked Zone		Bnch/Stg	Entered Shot Total	Top (ftKB)		Btm (ftKB)		Date	
NIOBRARA, ORIGINAL HOLE			20	6,970.00		6,990.00		4/1/1993	
NIOBRARA, ORIGINAL HOLE			8	7,106.00		7,114.00		4/1/1993	
NIOBRARA, ORIGINAL HOLE			19	7,176.00		7,195.00		4/1/1993	
CODELL, ORIGINAL HOLE				7,294.00		7,312.00		3/26/1993	
CODELL, ORIGINAL HOLE			60	7,294.00		7,304.00		7/23/1999	
Stimulation Intervals									
Zone				Start Date		Top (ftKB)		Btm (ftKB)	
NIOBRARA, ORIGINAL HOLE				4/2/1993		6,970.0		7,195.0	
CODELL, ORIGINAL HOLE				3/30/1993		7,294.0		7,312.0	
CODELL, ORIGINAL HOLE				7/26/1999		7,294.0		7,312.0	
Other In Hole									
Run Date		Des				OD (in)	Top (ftKB)	Btm (ftKB)	
Logs									
Date		Type					Top, MD (ftKB)		Btm, MD (ftKB)
3/18/1993		COMPENSATED DENSITY					4,300.0		7,448.0
3/18/1993		INDUCTION					672.0		7,448.0
3/23/1993		CEMENT BOND					5,980.0		7,350.0
Plug Back Total Depths									
Date		Type		Com					Depth (ftKB)
3/23/1993		FILL		DEPTH LOGGER ON CBL					7,356.0
10/16/2009		FILL		BAIL FROM 7300 TO 7365					7,365.0