

TRILOBITE TESTING L.L.C.



OPERATOR : Energy Alliance
WELL NAME: 1-9 Choctaw
LOCATION : 9-35-44w
INTERVAL : 2638.00 To 2694.00 ft

DATE 7-17-00

KB 0.00 ft
GR 0.00 ft
TD 2694.00 ft
TICKET NO: 13053
FORMATION: Wabunsee
TEST TYPE: CONVENTIONAL
DST #1

RECORDER DATA

Mins	Field	1	2	3	4	TIME DATA-----
PF 30 Rec.	13277	13277	3026			PF Fr. 1131 to 1201 hr
SI 60 Range(Psi)	4125.0	4125.0	4995.0	0.0	0.0	IS Fr. 1201 to 1301 hr
SF 60 Clock(hrs)	18hr	18hr	elect			SF Fr. 1301 to 1401 hr
FS 120 Depth(ft)	2694.0	2694.0	2647.0	0.0	0.0	FS Fr. 1401 to 1601 hr

	Field	1	2	3	4
A. Init Hydro	1275.0	0.0	1259.0	0.0	0.0
B. First Flow	97.0	0.0	43.0	0.0	0.0
B1. Final Flow	270.0	0.0	291.0	0.0	0.0
C. In Shut-in	486.0	0.0	473.0	0.0	0.0
D. Init Flow	324.0	0.0	295.0	0.0	0.0
E. Final Flow	410.0	0.0	395.0	0.0	0.0
F. Fl Shut-in	475.0	0.0	475.0	0.0	0.0
G. Final Hydro	1244.0	0.0	1267.0	0.0	0.0
Inside/Outside	0	0	I		

T STARTED 0958 hr
T ON BOTM 1130 hr
T OPEN 1131 hr
T PULLED 1601 hr
T OUT 1800 hr

TOOL DATA-----
Tool Wt. 1800.00 lbs
Wt Set On Packer 24000.00 lbs
Wt Pulled Loose 90000.00 lbs
Initial Str Wt 70000.00 lbs
Unseated Str Wt 70000.00 lbs
Bot Choke 0.78 in
Hole Size 7.78 in
D Col. ID 2.25 in
D. Pipe ID 3.38 in
D.C. Length 553.00 ft
D.P. Length 2111.00 ft

RECOVERY

Tot Fluid 870.00 ft of 553.00 ft in DC and 317.00 ft in DP
180.00 ft of watery mud 40%W 60%M
480.00 ft of muddy water 70%W 30%M
210.00 ft of mud cut water 90%W 10%M
0.00 ft of
0.00 ft of
0.00 ft of
0.00 ft of slight gas bubbles in samples
0.00 ft of

SALINITY 50000.00 P.P.M. A.P.I. Gravity 0.00

BLOW DESCRIPTION

1st open fair blow B.O.B. in 4 min.

Bled 2" no blow back

2nd open weak blow built to B.O.B. in 22 min.

Bled 2" no blow back

MUD DATA-----
Mud Type chemical
Weight 9.10 lb/cf
Vis. 38.00 S/L
W.L. 12.80 in3
F.C. 0.00 in
Mud Drop

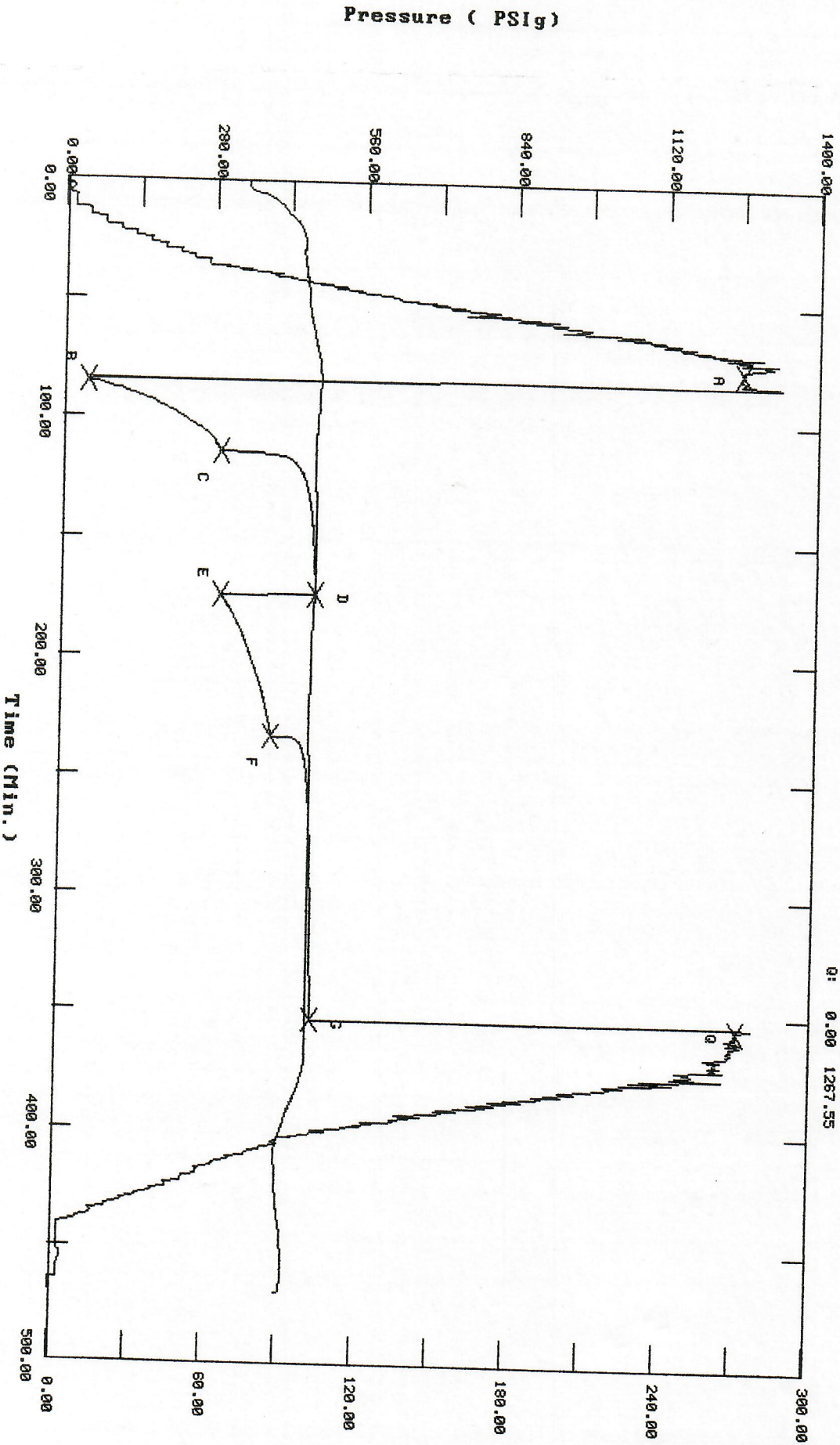
Amt. of fill 10.00 ft
Btm. H. Temp. 110.00 F
Hole Condition
% Porosity 0.00
Packer Size 6.75 in
No. of Packers 2
Cushion Amt. 0.00

Cushion Type
Reversed Out N
Tool Chased N
Tester Scott Bugbee
Co. Rep. Harold Frauli
Contr. Cheyenne
Rig # 5
Unit #
Pump T.

SAMPLES:
SENT TO:

TEST HISTORY

13053 DST#1 1-9 Choctaw Energy Alliance



Flag Points
t (Min.) P (PSIg)

A:	0.00	1259.90
B:	0.00	43.98
C:	29.50	291.90
D:	59.50	473.71
E:	0.00	295.97
F:	59.50	395.42
G:	120.00	475.05
H:	0.00	1267.55

TRILOBITE TESTING L.L.C.

OPERATOR : Energy Alliance
 WELL NAME: 1-9 Choctaw
 LOCATION : 9-35-44w
 INTERVAL : 3486.00 To 3517.00 ft

DATE 7-19-00

KB 0.00 ft
 GR 0.00 ft
 TD 3517.00 ft

TICKET NO: 13054 DST #2
 FORMATION: Lansing
 TEST TYPE: CONVENTIONAL

RECORDER DATA

Mins	Field	1	2	3	4	TIME DATA-----
PF 30 Rec.	13277	13277	3026			PF Fr. 2016 to 2046 hr
SI 60 Range(Psi)	4125.0	4125.0	4995.0	0.0	0.0	IS Fr. 2046 to 2146 hr
SF 60 Clock(hrs)	18hr	18hr	elect			SF Fr. 2146 to 2246 hr
FS 120 Depth(ft)	3517.0	3517.0	3494.0	0.0	0.0	FS Fr. 2246 to 2446 hr

	Field	1	2	3	4
A. Init Hydro	1769.0	0.0	1663.0	0.0	0.0
B. First Flow	75.0	0.0	22.0	0.0	0.0
B1. Final Flow	97.0	0.0	57.0	0.0	0.0
C. In Shut-in	671.0	0.0	654.0	0.0	0.0
D. Init Flow	108.0	0.0	37.0	0.0	0.0
E. Final Flow	140.0	0.0	105.0	0.0	0.0
F. Fl Shut-in	671.0	0.0	645.0	0.0	0.0
G. Final Hydro	1707.0	0.0	1650.0	0.0	0.0
Inside/Outside	0	0	0	0.0	0.0

T STARTED 1825 hr
 T ON BOTM 2015 hr
 T OPEN 2016 hr
 T PULLED 2446 hr
 T OUT 0310 hr

TOOL DATA-----
 Tool Wt. 1800.00 lbs
 Wt Set On Packer 24000.00 lbs
 Wt Pulled Loose 100000.00 lbs
 Initial Str Wt 74000.00 lbs
 Unseated Str Wt 74000.00 lbs
 Bot Choke 0.78 in
 Hole Size 7.78 in
 D Col. ID 2.25 in
 D. Pipe ID 3.38 in
 D.C. Length 553.00 ft
 D.P. Length 2924.00 ft

RECOVERY

Tot Fluid 180.00 ft of 180.00 ft in DC and 0.00 ft in DP
 60.00 ft of Mud 100%
 120.00 ft of gassy watery mud 10%G 25%W 65%M
 0.00 ft of
 0.00 ft of
 0.00 ft of
 0.00 ft of
 0.00 ft of
 0.00 ft of

SALINITY 65000.00 P.P.M. A.P.I. Gravity 0.00

BLOW DESCRIPTION

1st open fair blow built to B.O.B. in 8 min. strong blow

Bled 2" no blow back

2nd open B.O.B. as soon as tool opened
 GTS in 24 min. Gas will burn

Bled 2" no blow back

MUD DATA-----
 Mud Type chemical
 Weight 9.00 lb/cf
 Vis. 40.00 S/L
 W.L. 10.40 in3
 F.C. 0.00 in
 Mud Drop Y 15.0 ft

Amt. of fill 0.00 ft
 Btm. H. Temp. 120.00 F
 Hole Condition good
 % Porosity 0.00
 Packer Size 6.75 in
 No. of Packers 2
 Cushion Amt. 0.00

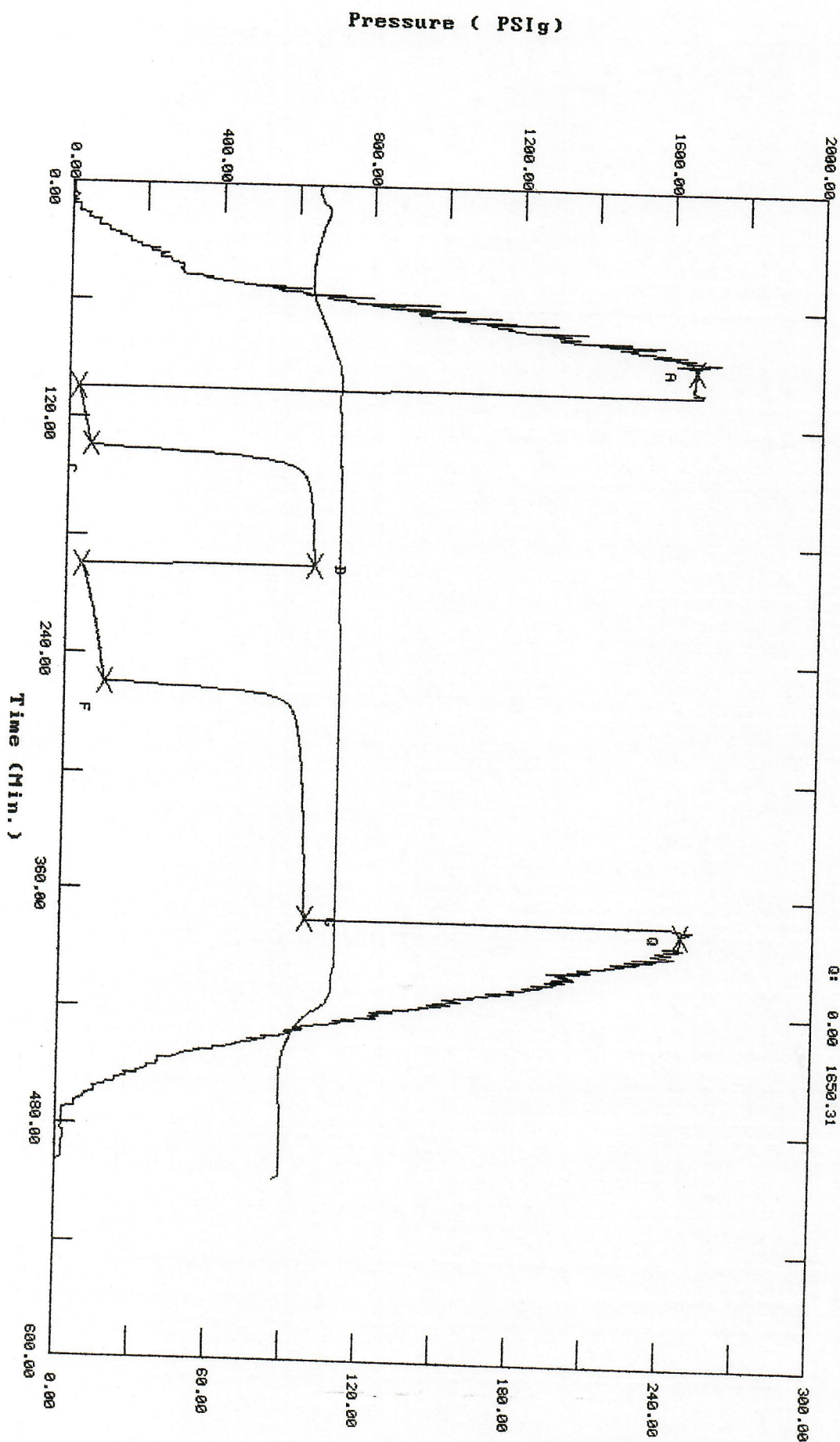
Cushion Type
 Reversed Out N
 Tool Chased N
 Tester Scott Bugbee
 Co. Rep. Harold Frauli
 Contr. Cheynne
 Rig # 5
 Unit #
 Pump T.

SAMPLES: Yes
 SENT TO: Caraway Analytical

Test Successful: Y

TEST HISTORY

13054 DST #2 1-9 Chawtac Energy Alliance



GAS RECOVERY

COMPANY: Energy Alliance

WELL NAME: 1-9 Choctaw

WELL LOCATION: 9-35-44w

INTERVAL Fr.: 3486.00 To 3517.00

DATE: 7-19-00

KB Elev: 0.00

GR Elev: 0.00

ft TICKET #13054

DST #2

ft FORMATION: Lansing

T.D.: 3517.00 ft TEST TYPE: CONVENTIONAL

GAS RECOVERY MEASURED WITH Mer1a

***** GAS RATES FOR FLOW #2

Time (min)	Orifice (in)	Pressure (Psi)	H2O (in)	Rate (cf/d)
30	0.25	0	18	7120.0
35	0.25	0	16	6720.0
40	0.25	0	20	7510.0
45	0.25	0	22	7880.0
50	0.25	0	18	7120.0
55	0.25	0	16	6720.0
60	0.25	0	16	6720.0

TRILOBITE TESTING L.L.C.

OPERATOR : Energy Alliance
WELL NAME: 1-9 Choctaw
LOCATION : 9-35-44w
INTERVAL : 3904.00 To 3915.00 ft

DATE 7-21-00
KB 0.00 ft
GR 0.00 ft
TD 3915.00 ft
TICKET NO: 13055
FORMATION: Cherokee
TEST TYPE: CONVENTIONAL
DST #3

RECORDER DATA

Mins	Rec.	Field	1	2	3	4	TIME DATA-----
PF 30		13277	13277	3026			PF Fr. 0833 to 0903 hr
SI 60	Range(Psi)	4125.0	4125.0	4995.0	0.0	0.0	IS Fr. 0903 to 1003 hr
SF 15	Clock(hrs)	18hr	18hr	elect			SF Fr. 1003 to 1018 hr
FS 30	Depth(ft)	3915.0	3915.0	3110.0	0.0	0.0	FS Fr. 1018 to 1048 hr

	Field	1	2	3	4	
A. Init Hydro	1946.0	0.0	1864.0	0.0	0.0	T STARTED 0645 hr
B. First Flow	108.0	0.0	20.0	0.0	0.0	T ON BOTM 0832 hr
B1. Final Flow	108.0	0.0	20.0	0.0	0.0	T OPEN 0833 hr
C. In Shut-in	140.0	0.0	51.0	0.0	0.0	T PULLED 1033 hr
D. Init Flow	108.0	0.0	18.0	0.0	0.0	T OUT 1240 hr
E. Final Flow	108.0	0.0	24.0	0.0	0.0	
F. Fl Shut-in	118.0	0.0	31.0	0.0	0.0	
G. Final Hydro	1904.0	0.0	1835.0	0.0	0.0	TOOL DATA-----
Inside/Outside	0	0	I			Tool Wt. 1800.00 lbs

RECOVERY

Tot Fluid 10.00 ft of 10.00 ft in DC and 0.00 ft in DP
10.00 ft of Mud 100%
0.00 ft of
0.00 ft of
0.00 ft of
0.00 ft of
0.00 ft of
0.00 ft of
0.00 ft of

SALINITY 0.00 P.P.M. A.P.I. Gravity 0.00

BLOW DESCRIPTION

1st open weak surface blow died in 10 minutes

no blow back

2nd open weak surface blow died in 9 minutes

no blow back

MUD DATA-----
Mud Type chemical
Weight 9.10 lb/cf
Vis. 43.00 S/L
W.L. 9.60 in3
F.C. 0.00 in
Mud Drop

Amt. of fill 0.00 ft
Btm. H. Temp. 120.00 F
Hole Condition good
% Porosity 0.00
Packer Size 6.75 in
No. of Packers 2
Cushion Amt. 0.00
Cushion Type
Reversed Out N
Tool Chased N

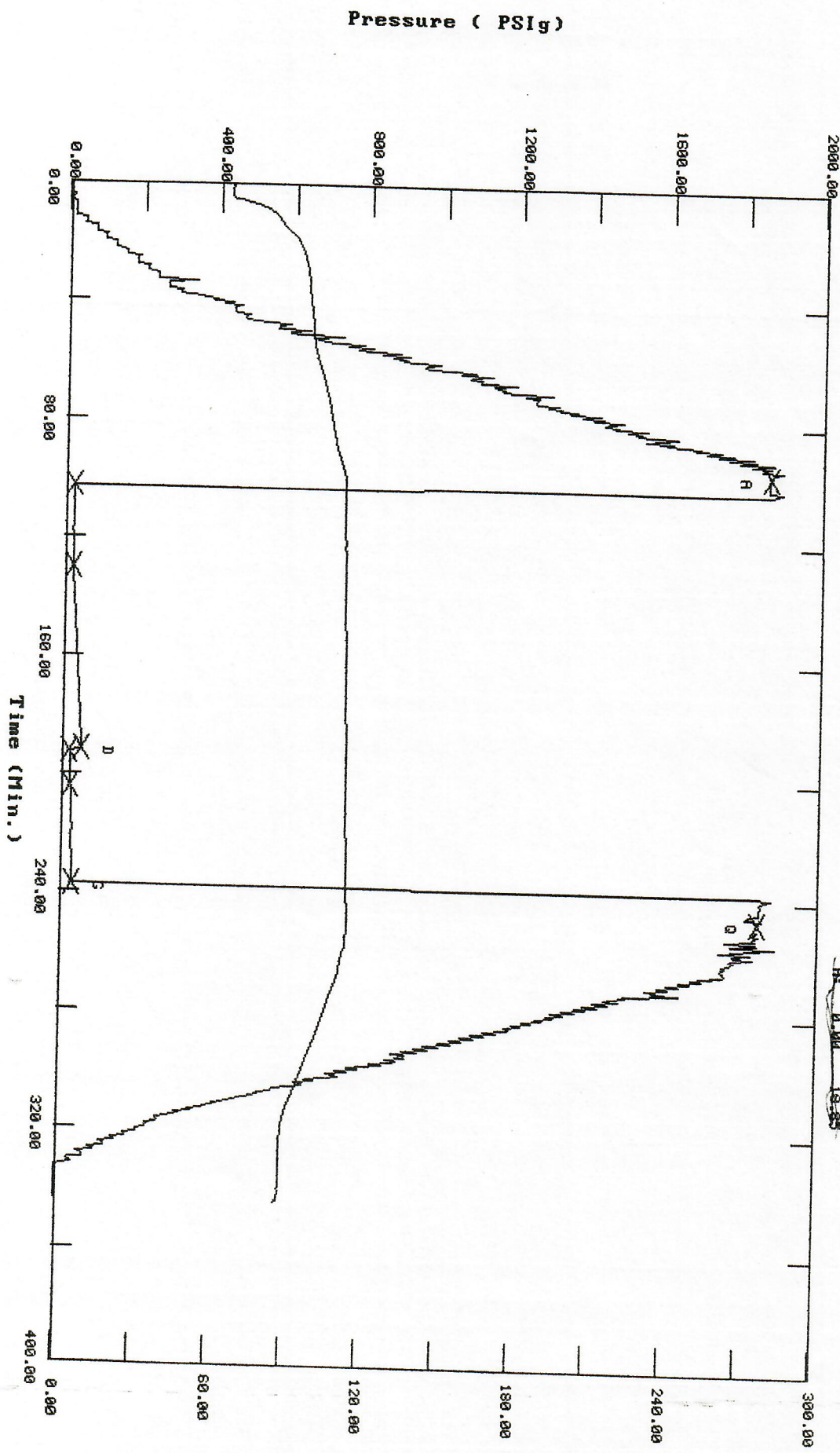
Tester Scott Bugbee
Co. Rep. Harold Frauli
Contr. Cheyenne
Rig # 5
Unit #
Pump T.

SAMPLES:
SENT TO:

Test Successful: Y

TEST HISTORY

13055 DST#3 1-9 Choctaw Energy Alliance



Flag Points		
t (Min.)	P (PSig)	
A:	0.00	1864.94
B:	0.00	20.63
C:	27.50	20.93
D:	61.50	51.39
E:	0.00	18.85
F:	12.00	24.30
G:	33.00	31.89
H:	0.00	18.85

t (Min.) P (PSig)
0: 0.00 1845.25

TRILOBITE TESTING L.L.C.

BEST IMAGE
AVAILABLE

OPERATOR : Energy Alliance

DATE 7-22-00

WELL NAME: 1-9 Choctaw

KB 0.00 ft

TICKET NO: 13056

DST #4

LOCATION : 9-35-44w Baca co CO

GR 0.00 ft

FORMATION: Cherokee

INTERVAL : 3917.00 To 3968.00 ft

TD 4018.00 ft

TEST TYPE: CONVENTIONALSTRADDLE

RECORDER DATA

Mins	Field	1	2	3	4	TIME DATA-----
PF 30 Rec.	13277	13277	3026	13252		PF Fr. 1222 to 1252 hr
SI 60 Range(Psi)	4125.0	4125.0	4995.0	4550.0	0.0	IS Fr. 1252 to 1352 hr
SF 60 Clock(hrs)	18hr	18hr	elect	12hr		SF Fr. 1352 to 1422 hr
FS 120 Depth(ft)	3963.0	3963.0	3925.0	4018.0	0.0	FS Fr. 1422 to 1522 hr

	Field	1	2	3	4	
A. Init Hydro	1873.0	1935.0	1826.0	1967.0	0.0	T STARTED 1015 hr
B. First Flow	280.0	295.0	211.0	0.0	0.0	T ON BOTM 1221 hr
B1. Final Flow	609.0	632.0	632.0	0.0	0.0	T OPEN 1222 hr
C. In Shut-in	804.0	819.0	800.0	0.0	0.0	T PULLED 1522 hr
D. Init Flow	691.0	703.0	642.0	0.0	0.0	T OUT 1630 hr
E. Final Flow	763.0	766.0	754.0	0.0	0.0	
F. Fl Shut-in	814.0	819.0	802.0	0.0	0.0	
G. Final Hydro	1821.0	1856.0	1780.0	1899.0	0.0	TOOL DATA-----
Inside/Outside	0	0	0	0	0.0	Tool Wt. 2000.00 lb

RECOVERY

Tot Fluid 1480.00 ft of 553.00 ft in DC and 1847.00 ft in DP

186.00 ft of Muddy water

0.00 ft of 90% water 10% mud

1294.00 ft of Water

0.00 ft of 100% water

0.00 ft of

0.00 ft of

0.00 ft of

0.00 ft of

SALINITY 48000.00 P.P.M. A.P.I. Gravity 0.00

BLOW DESCRIPTION

Initial Flow:

Strong blow bottom of bucket in 1 minute.

Initial Shut-In:

Bled 2" no blow back.

Final Flow:

Fair blow bottom of bucket in 5 minutes.

Final Shut-In:

Bled 2" no blow back.

MUD DATA-----	
Mud Type	Chemical
Weight	9.20 lb
Vis.	45.00 S
W.L.	9.60 ir
F.C.	0.00 ir
Mud Drop	

Amt. of fill	0.00 ft
Btm. H. Temp.	120.00 F
Hole Condition	
% Porosity	0.00
Packer Size	6.75 ir
No. of Packers	3
Cushion Amt.	0.00
Cushion Type	
Reversed Out N	
Tool Chased N	

SAMPLES:

SENT TO:

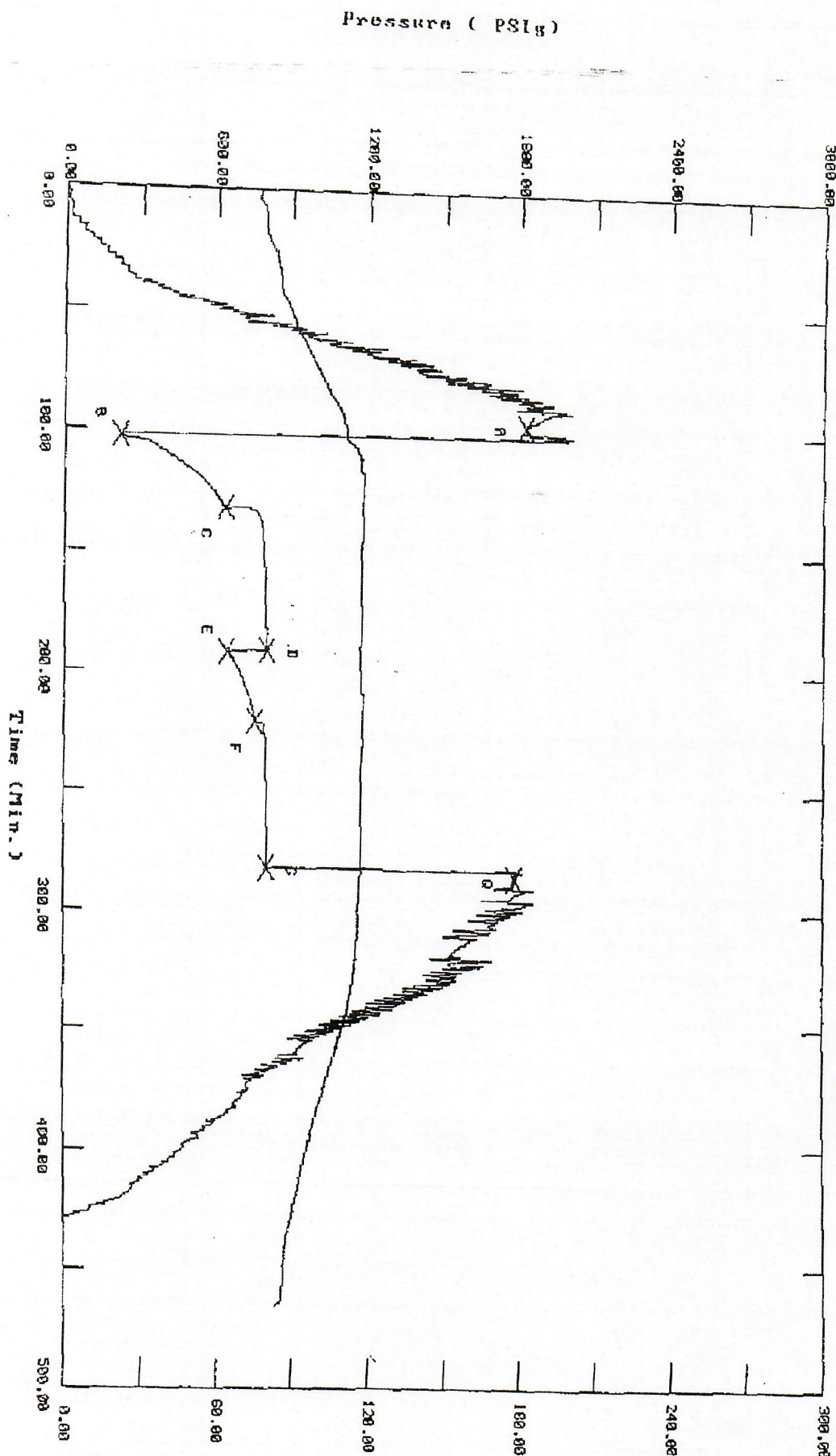
Tester	Scott Bugbee
Co. Rep.	Harold Frauli
Contr.	Cheyenne
Rig #	5
Unit #	
Pump T.	

BEST IMAGE
AVAILABLE

Test Successful: Y

TEST HISTORY

13056 DST#4 1-9 Choctaw Energy Alliance



Flag Points

Time (Min.)	Pressure (PSIg)
A: 0.00	1826.33
B: 0.00	211.39
C: 29.58	632.40
D: 59.59	802.76
E: 0.00	642.28
F: 29.58	754.35
G: 51.00	802.76
H: 0.00	1788.77

BEST IMAGE AVAILABLE

TRILOBITE TESTING L.L.C.

OPERATOR : Energy Alliance

WELL NAME: 1-9 Choctaw

LOCATION : 9-35-44w Baca co CO

INTERVAL : 3492.00 To 3526.00 ft

DATE 7-22-00

KB 0.00 ft

GR 0.00 ft

TD 4018.00 ft

TICKET NO: 13057 DST #5

FORMATION: Lansing

TEST TYPE: CONVENTIONALSTRADDLE

RECORDER DATA

Mins	Field	1	2	3	4	TIME DATA-----
PF 30 Rec.	13277	13277	3026	13252		PF Fr. 2217 to 2247 hr
SI 60 Range(Psi)	4125.0	4125.0	4995.0	4550.0		IS Fr. 2247 to 2347 hr
SF 90 Clock(hrs)	18hr	18hr	elect	12hr		SF Fr. 2347 to 0117 hr
FS 90 Depth(ft)	3526.0	3526.0	3501.0	4018.0		FS Fr. 0117 to 0247 hr

	Field	1	2	3	4	
A. Init Hydro	1717.0	1691.0	1634.0	1650.0	0.0	T STARTED 1730 hr
B. First Flow	54.0	55.0	18.0	0.0	0.0	T ON BOTM 2216 hr
Bl. Final Flow	54.0	49.0	17.0	0.0	0.0	T OPEN 2217 hr
C. In Shut-in	640.0	649.0	651.0	0.0	0.0	T PULLED 9247 hr
D. Init Flow	54.0	53.0	18.0	0.0	0.0	T OUT 0600 hr
E. Final Flow	64.0	59.0	30.0	0.0	0.0	
F. Fl Shut-in	671.0	685.0	675.0	0.0	0.0	
G. Final Hydro	1572.0	1560.0	1580.0	1590.0	0.0	TOOL DATA-----
Inside/Outside	0	0	I	0	0.0	Tool Wt. 2000.00 lb

RECOVERY

Tot Fluid	10.00 ft of	10.00 ft in DC and	0.00 ft in DP
10.00	ft of Mud		
0.00	ft of 100% mud		
0.00	ft of		
0.00	ft of		
0.00	ft of		
0.00	ft of		
0.00	ft of		
0.00	ft of		

SALINITY 0.00 P.P.M. A.P.I. Gravity 0.00

BLOW DESCRIPTION

Initial Flow:

Fair blow built to bottom of bucket
in 5 minutes.

Initial Shut-In:

Bled 2" no blow back.

Final Flow:

Fair blow bottom of bucket as soon
as tool opened.

Final Shut-In:

Bled 2" no blow back.

SAMPLES:

SENT TO:

MUD DATA-----

Mud Type	Chemical
Weight	9.20 lb
Vis.	45.00 s/
W.L.	9.60 in
F.C.	0.00 in
Mud Drop	

Amt. of fill	0.00 ft
Btm. H. Temp.	120.00 F

Hole Condition	
% Porosity	0.00
Packer Size	6.75 in
No. of Packers	3
Cushion Amt.	0.00

Cushion Type

Reversed Out N

Tool Chased N

Tester Scott Bugbee

Co. Rep. Harold Frauli

Contr. Cheyenne

Rig # 5

Unit #

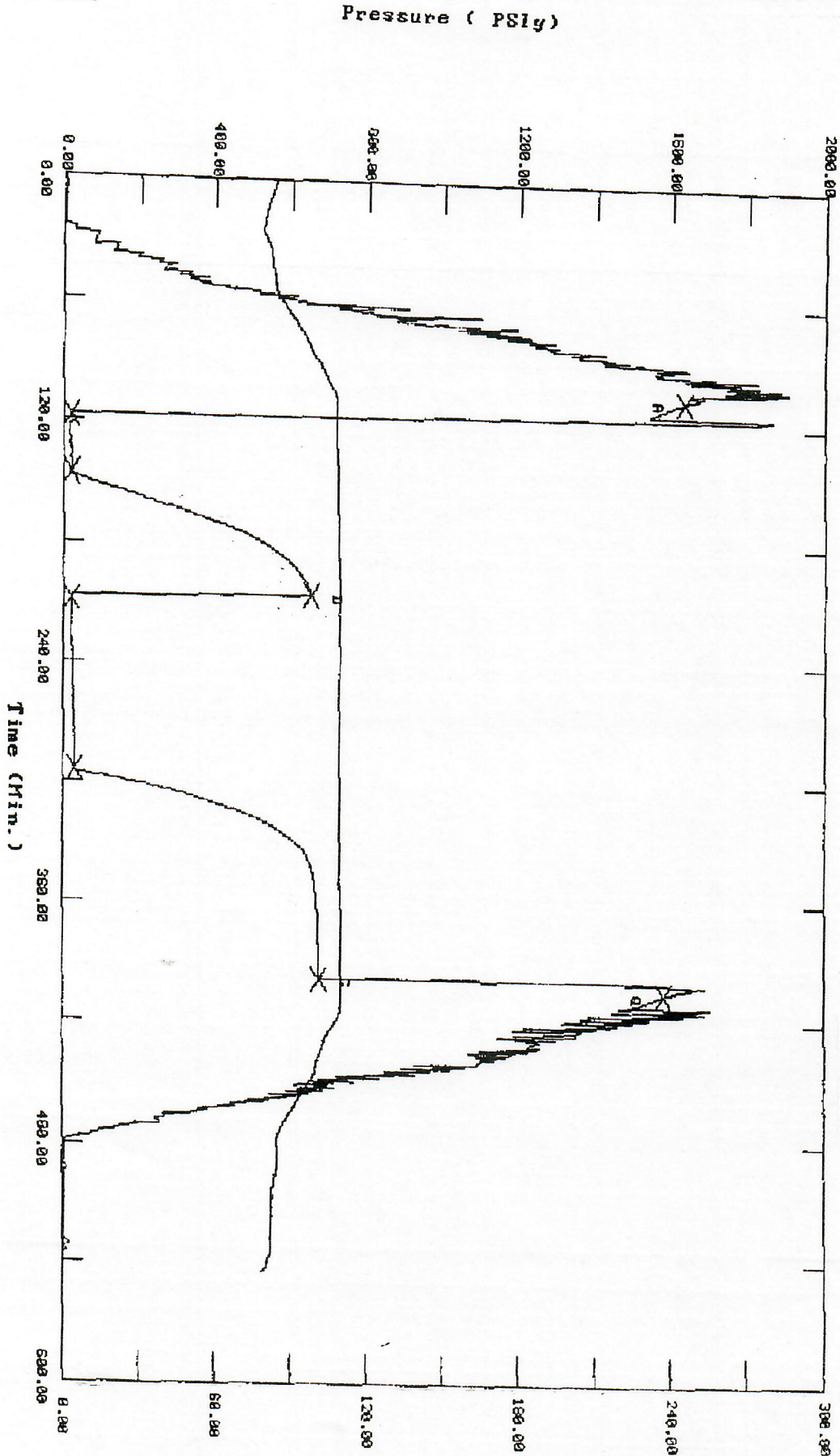
Pump T.

BEST IMAGE
AVAILABLE

Test Successful: Y

TEST HISTORY

13057 DST#5 1-9 Choctaw Energy Alliance



Flag Points
Time (Min.) PC PSig

BEST IMAGE
AVAILABLE

HYDC
SHOW
WK
60
EXC

MIN/FT

1 2 3 4 5 6 7 8 9

DISPLACED MUD SYSTEM
AT 1250

STONE CORRAL

DS 5 1/4°

RED CAVE

WT 8.6
VIS 41
YP 15
PH 10
WL 8.8
CL 2100
LCM 3#

60

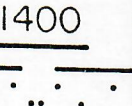
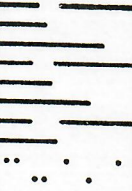
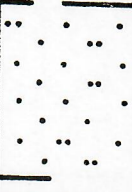
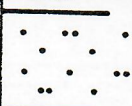
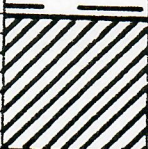
DS 5°

1300

#

#

#



TOTAL GAS UNITS

10 30 50 70 90

8 5/8" SET AT 790'

DS - SURVEY

295' M.R.

750' 7°

1250' 5 1/2°

14

10

CONNECTION GAS

SH - BRT RED/ORNG OCC CYCN
RTHY BLKY CALC SLTY/SNDY
ANHYC IP

ANHY - MOT BRN/REDBRN TAN
TRNSL IP BLK CALC IP

SLTST/VF SS(40% SPL) - TAN
BRN/CYCN LT RED/ORNG FRI W/
SLTY W SRID GRS CA & SM CL
CMT CLN/MRLY IP W/SM CLAY
INFILL F CARB INCLS OCC FR
INCLIN Ø NO FLOR NO STN OF
CUT INTD W/
SH - BRT RED/ORNGBRN OCC CYC
RTHY BLKY CALC SNDY

SH - M/BRT RED/BRN FRICK RE
ORNG OCC LT GN/GYCN RTHY
CALC SLTY/SNDY IP & OCC GRI
TO/
SLTST/VF SS TAN LT RED/OR
REDBRN LT GN BRT VF W SRID
GRS CA & CLAY CMT TR INTR
Ø ABT CLAY INFILL NO FLOR
STN OR CUT

SLTST/VF SS(40% SPL) - TAN
GN/BRN REDBRN FRI W SRID
GRS CA & CLAY CMT CLN/MRLY
NO FLOR NO STN OR CUT

SH - REDBRN ORNG RTHY BLKY
CALC SLTY/SNDY & OCC GRNG
SS/SLTST - RED AA TT/PL IN
GRAN Ø-ABT CLAY INFILL NO
FLOR NO STN OR CUT

BEST IMAGE
AVAILABLE

94°

1300

Stone Corral

B. Stone Corral
Red. Cave

1350

96°

1400

96°

1450

BEST IMAGE
AVAILABLE

BEST IMAGE
AVAILABLE

2600

101°

2650

Wabamsee SS

DST #1

101°

2700

101°

Wabamsee ls

2750

101°

2800

BEST IMAGE
AVAILABLE

DST#2

DST#5

3500

- CO

WT 8.9
VIS 43
YP 16
PH 9.6
CL 2500
LCM 8#

35(8/6/3/1)

500+

3600

CO

MARWATON

BEST IMAGE
AVAILABLE

SH - M TO DK GRN BRN
MICX MICSEC/SUC BRIT
GRNG TO/
NRY ST MICX DNS HT
GRNG CLAY CM GALL
FLOR NO STN OR CUT
T-1000 BY RD NRY
CARB MICX CL FLOR
FLOR NO STN OR CUT

LS - LT BRN WH CRPXL HT
CLN SIL TT NO SHOW

LS - LT/M MOT BRN WH
MICX MICSEC/SUC BRIT
CHKY IP V FOSS G OOL SY
CLAY GD INTX 0 OCC GR
S MOLDIC 0 -SM SY-CA IX

HYD. FLOR...
SPECIYEL GD STRMG CBT T
BRN L O WHEN CRUSHED S
EXC SHOW

LS - M BRN COMICR CRPXL E
CLN V OOL W/OCC GD MOLDI
NO FLOR NO STN OR CUT

LS - LT/M BRN WH BIONICR
MICSEC/SUC BRIT CLN V FO
OOL SNDY GD MOLDIC S INT
NO FLOR NO STN OR CUT

SH - DK BRN TO CY FRN FES
CALC INTBD W/

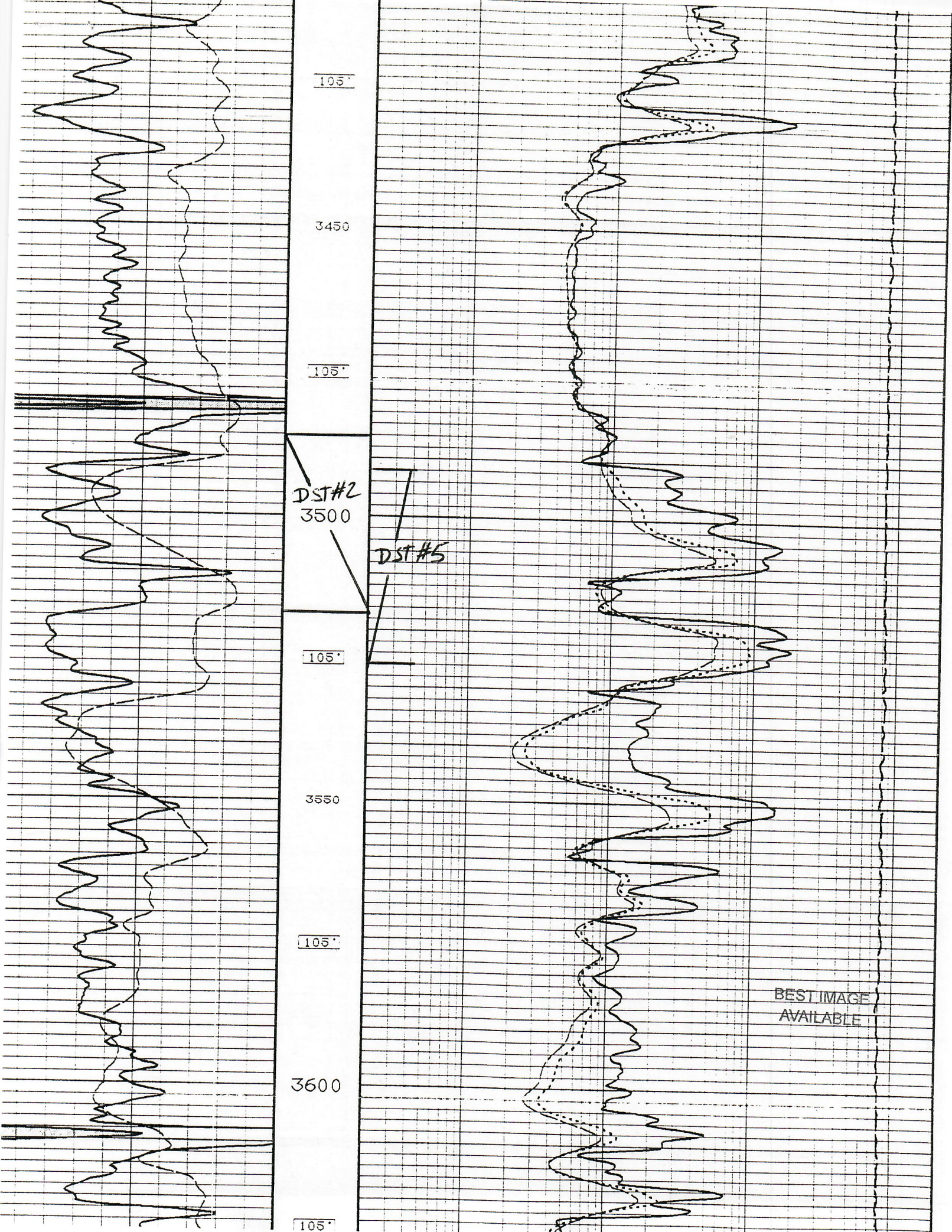
LS - M/DK BRN CRPXL HT DN
CLN OOL TT NO SHOW

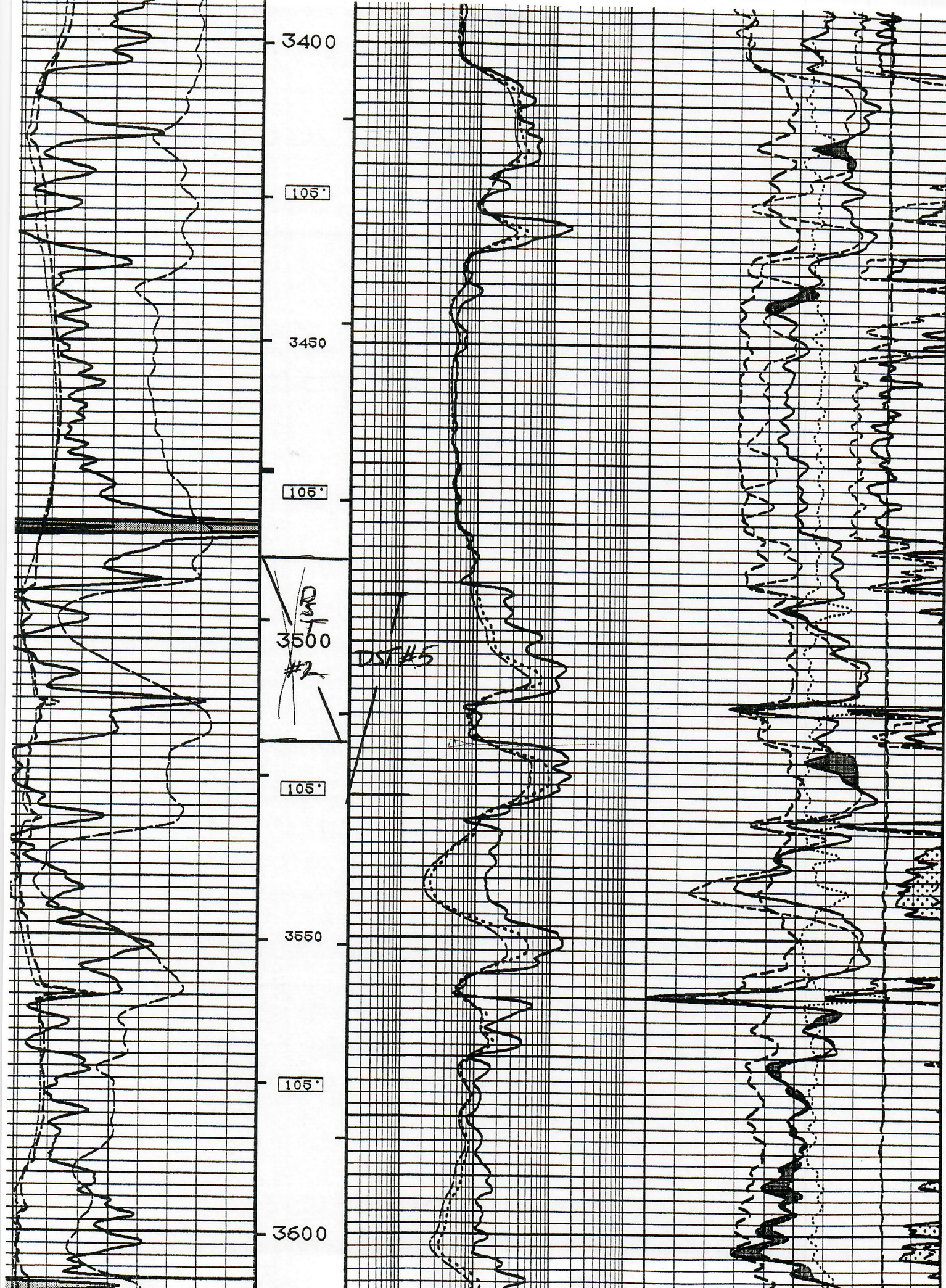
LS(GRST) - LT BRN BF OCHI
MICX MICSEC/SUC V BRIT
V SNDY W/F W SRID GRS OOL
OOLMOLDIC 0 INTX 0 NO FL
STN OR CUT OCC GRNG TO/

SS - LT BRN WH FRI VE WIST
GRS CA GMT GD INTEGRAN 0
SHOW

SH - M/DK BRN REDBRN CY ME
GN VARIC IP SEFIS TO BKRY
CNDY FOSS TO INTD W/

LS - BRN CY CRPXL DNS VISEN
IP FOSS TT NO SHOW





WT 9.1
VIS 43
YP 16
PH 9.0
WL 96
CL 250G
LCM 6#

L. CHEROKEE

3900'

DST#3

CO

DST#4

CO

55(13/15/9/2)

75(20/20/12/2)

55 T6

35

38

38

4000'

CO

4020 TD

LT NO SHOW
SH - BLK DK BRN TO CY HT - BLK
CALC V RNDY

SH - BLK BRN TO BLK BLKY
V SNKY CARB

LT - BLK DK BRN TO XL DNS SV
MRC/MRKY TT NO SHOW

SH - A BLK FIS CARB

LS - LT/M MOT PRN S&P CY CO
E XL V SNKY S OOL SECURKY IT
LT NO SHOW

LS(CRNS) - M/DK MOT PRN TO
HF S&P MICKL MICSUC TO V SE
CHKY TP BRIT V SNKY S OOL S
W/FH/CH P SRTD SPRND GRS P
4 FULL COLDRN HYDC FLOR(6)
SPLY WK STRMC/BLNG CRT CRT
SL 1 OHOR

LS - LT BRN WN MICKL MICSUC I
CLN BRIT SNKY FOSS SECURKY TP
P VIS Ø MOT YELBL HYDC FLOR
(5% SPLY) WK STRMC/BLNG CRT
TR Ø STN WK SHOW

TR UNCONSL CRTZ GRS - CLR WH
M/C P SRTD SPRND GRS NO SHOW
SS(5%SD) - LT BRN S&P LT
V FRI M/F MOD SRTD GRS EA CN
V FRI SL GLAUC TE INTERAN V
NO FLOR NO STN OR CRT

LS - SPEC CY S&P E XL BRIT
V SNKY W/FH MOD SRTD GRS
VIS Ø NO SHOW

SH - CY M BRN REIDRN TD FLKZ
CALC SLTY W/

LS - M/LT BRN DE TAN CRXL
DNS SIL SNKY TP TT N

BEST IMAGE
AVAILABLE

105°

3850

105°

3900
Lower Cherokee

DST#3

105°

DST#4

PNS GAMMA RAY

3950

SHALLOW FE

DEEP INDUCTION

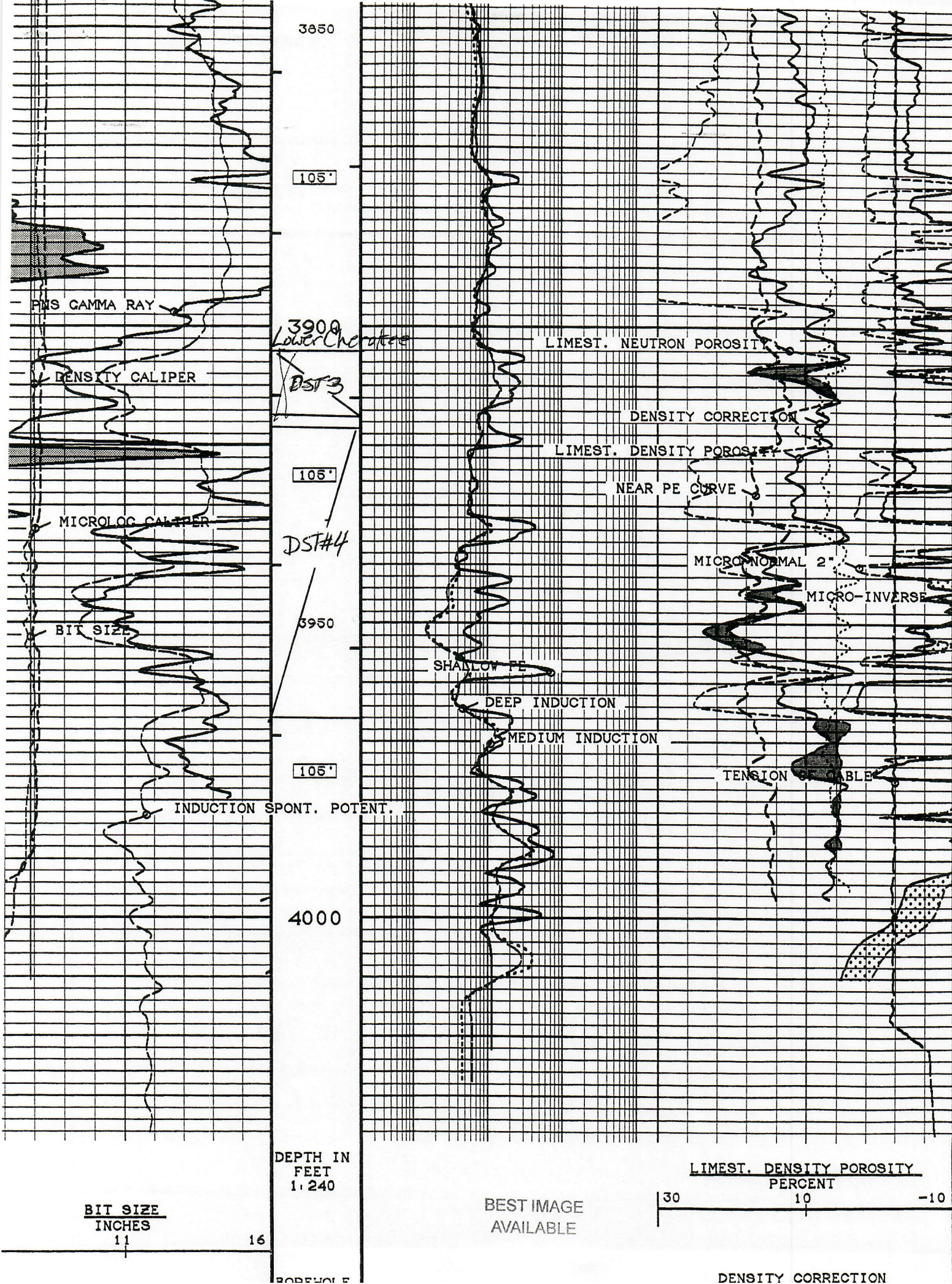
MEDIUM INDUCTION

INDUCTION SPOT. POTENT.

TENSION OF CABLE

BEST IMAGE
AVAILABLE

4000



3850

105'

3900
Lower Chert

DST#3

105'

DST#4

3950

105'

4000

DEPTH IN
FEET
1:240

BIT SIZE
INCHES
11

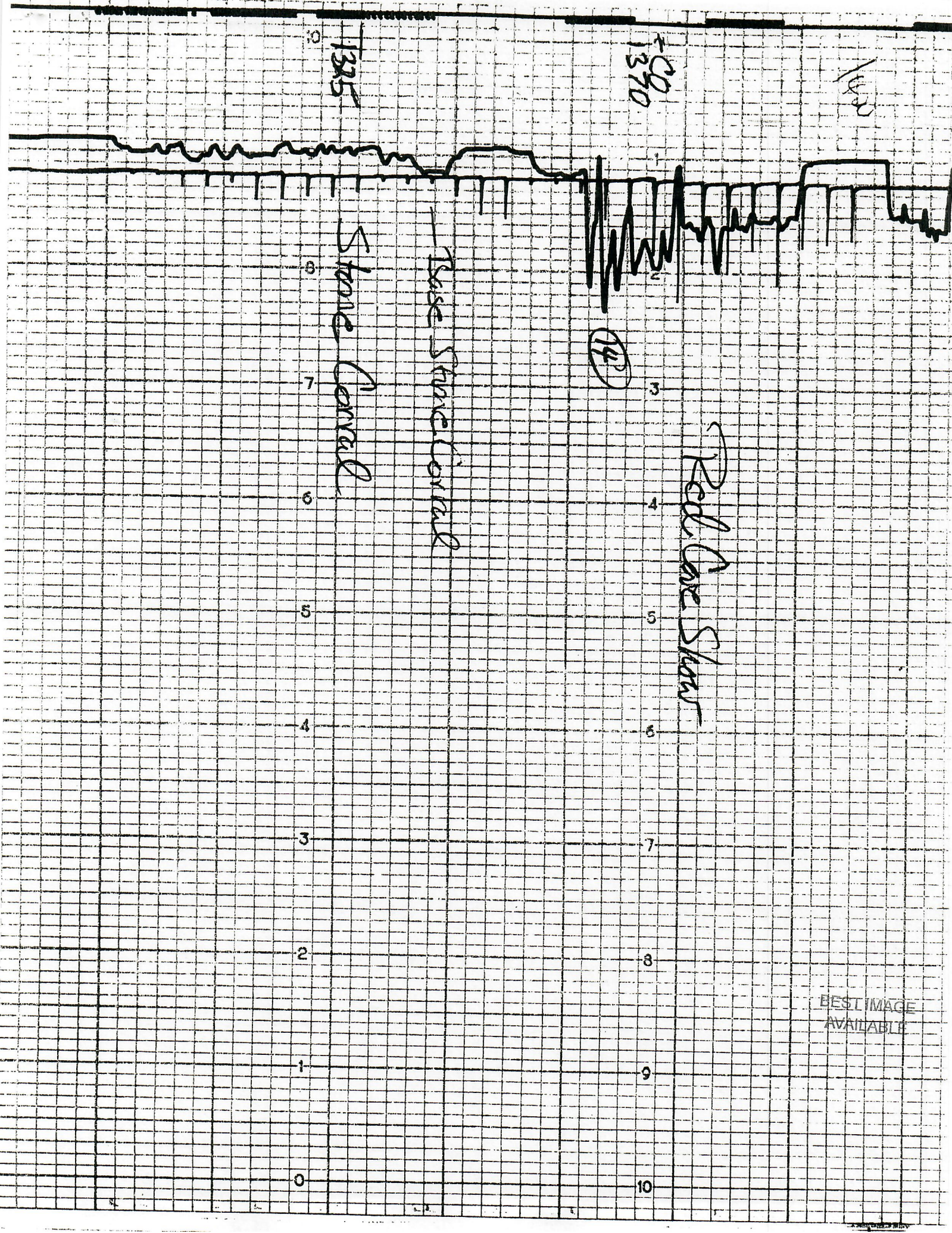
16

BEST IMAGE
AVAILABLE

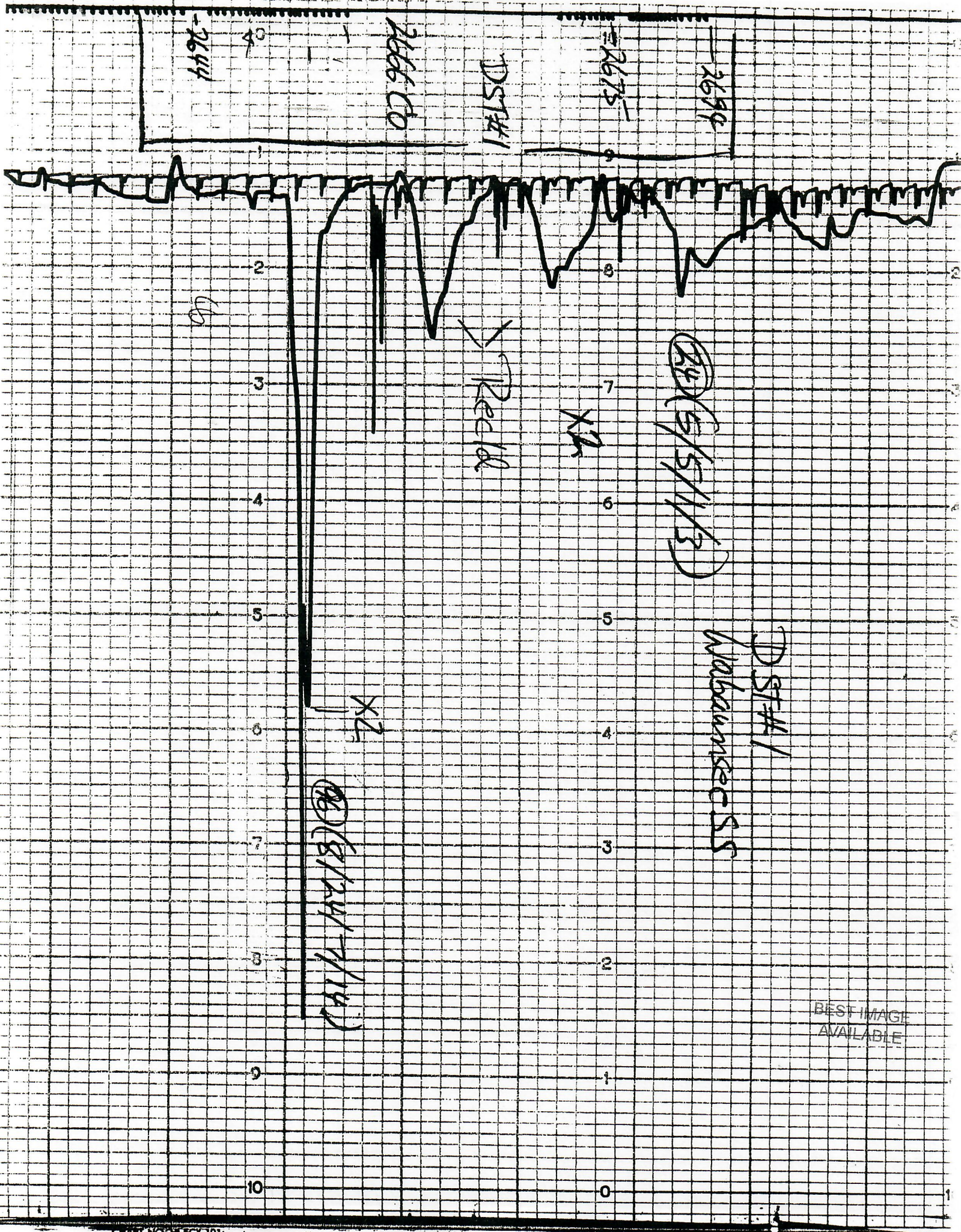
LIMEST. DENSITY POROSITY
PERCENT

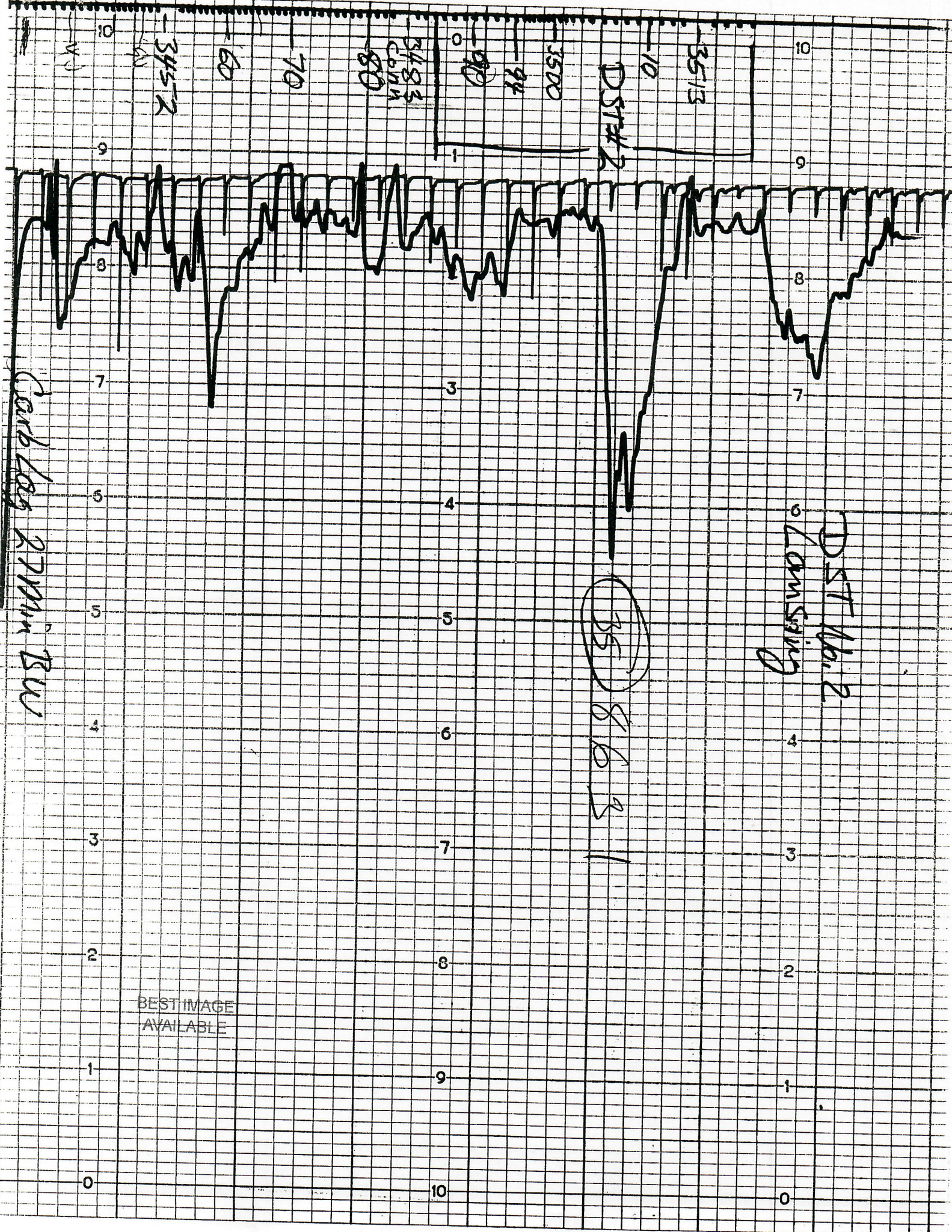
30 10 -10

DENSITY CORRECTION



BEST IMAGE AVAILABLE





BEST IMAGE
AVAILABLE

