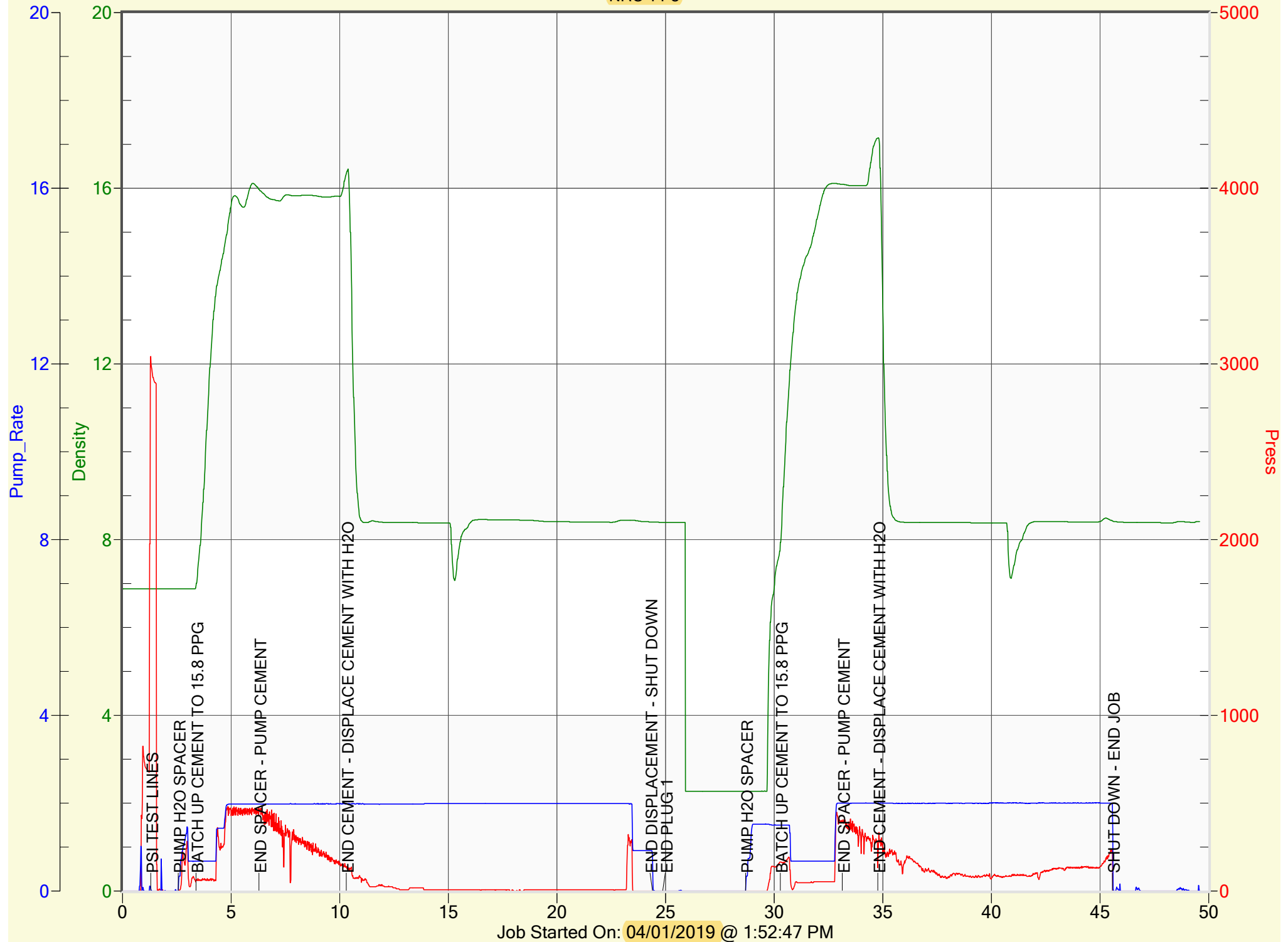


ANADARKO PETROLEUM

NRC 14-8





Service Order #: 75523C

Date: 01-Apr-19

Well Name	Location	County	St	API#		
NRC 14-8		WELD	CO	05-123-31384		
Formation	Cement Via	Type Of Service	Well Type	Age	AFE#	PO#
	TUBING	PLUG	GAS	REWORK	2146363	

Customer: Anadarko Petroleum

Remarks:

CIBP @ 7600

Plug 1: 7.9 bbls / 29 sks

Length: 7600 - 7091

Plug 2: 2.7 bbl / 10 sks

*Length: 5832 - 5658

Customer Rep: EDGAR CHAVEZ

PH:

WELLBORE DATA				
Type	Size	Weight	Depth	Volume
Surface Casing:	8.625	24.0	923.0	
Production Casing:	4.500	11.6	8,737.0	
Intermediate:				
Drill Pipe:				
Tubing:	2.375	4.7	7,600.0	

Type	Size	Depth (Top)	Depth (Bot)	Volume
Liner:				
Open Hole:				

OTHER DATA		
BHT	Max PSI	Total Depth
	2,000	7,600.0

Packer or RetainerType / Depth:

Perf Depths: # Total

		0	
		0	

TIME	PUMP RATES		DENSITY	PRESS	STG TOT	TOTAL	REMARKS
	WATER (gpm)	PUMP (bpm)	(lb/gal)	(psi)	(bbls)	(bbls)	
13:54	0	0.1	6.88	3,043		0.1	PSI TEST LINES
13:55	0	0.0	6.88	0		0.0	PUMP H2O SPACER
13:56	0	0.7	6.95	61		0.7	BATCH UP CEMENT TO 15.8 PPG
13:59	53	2.0	15.97	469		5.0	END SPACER - PUMP CEMENT
14:03	0	2.0	16.33	136		13.1	END CEMENT - DISPLACE CEMENT WITH H2O
14:17	0	0.8	8.40	0		40.5	END DISPLACEMENT - SHUT DOWN
14:18	0	0.0	8.39	0		40.5	END PLUG 1
14:58	0	0.0	2.27	0		0.0	PUMP H2O SPACER
15:00	0	1.5	7.94	165		2.2	BATCH UP CEMENT TO 15.8 PPG
15:02	0	2.0	16.09	390		5.0	END SPACER - PUMP CEMENT
15:04	0	2.0	17.14	132		8.3	END CEMENT - DISPLACE CEMENT WITH H2O
15:15	0	2.0	8.43	218		30.2	SHUT DOWN - END JOB

Summary

Max Fl. Rate	Avg Fl. Rate	Max Psi	Avg Psi
2.0	1.0	3,043	120

Customer Acknowledgement:

Service Rating:

- ☐ Satisfactory
☐ Unsatisfactory

Cementer:

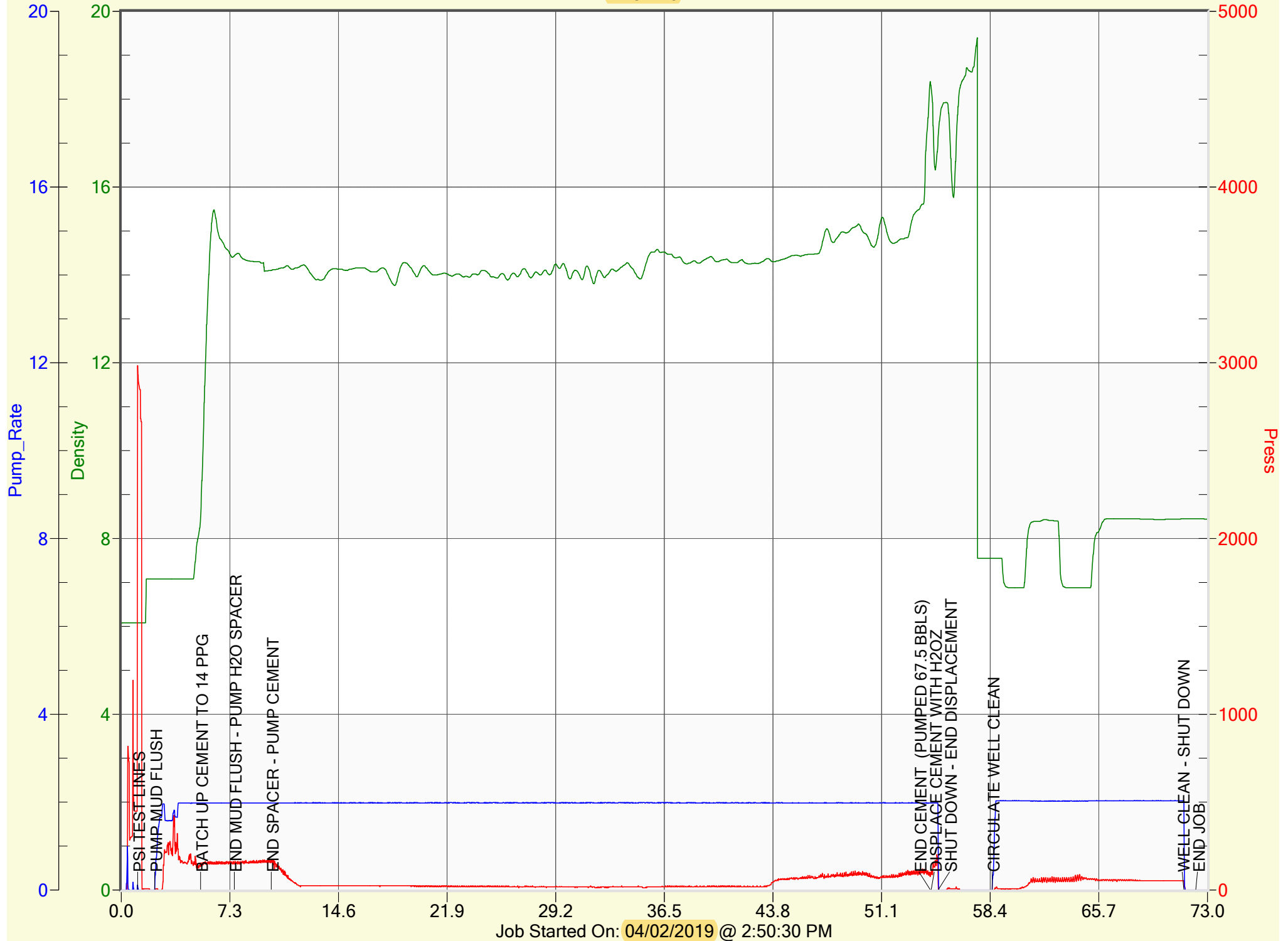
CORY THAUT

PRODUCTS USED

*Cement: Class G + Additives
- Density: 15.8 ppg / Yield: 1.53

ANADARKO PETROLEUM

NRC 14-8





Service Order #: 75524C

Date: 02-Apr-19

Well Name	Location	County	St	API#		
NRC 14-8		WELD	CO	05-123-31384		
Formation	Cement Via	Type Of Service	Well Type	Age	AFE#	PO#
	TUBING	PLUG	GAS	REWORK	2146363	

Customer: Anadarko Petroleum

Remarks:

CUT CSG @ 1345

Plug 1: 67.5 bbls / 240 sks

Length: 1445 - 720

Customer Rep: EDGAR CHAVEZ PH:

WELLBORE DATA				
Type	Size	Weight	Depth	Volume
Surface Casing:	8.625	24.0	923.0	
Production Casing:	4.500	11.6	8,737.0	
Intermediate:				
Drill Pipe:				
Tubing:	2.375	4.7	1,445.0	

Type	Size	Depth (Top)	Depth (Bot)	Volume
Liner:				
Open Hole:	7.875	923.0	1,345.0	

OTHER DATA		
BHT	Max PSI	Total Depth
	1,000	1,445.0

Packer or RetainerType / Depth:

--	--

Perf Depths: # Total

		0	
		0	

TIME	PUMP RATES		DENSITY	PRESS	STG TOT	TOTAL	REMARKS
	WATER (gpm)	PUMP (bpm)	(lb/gl)	(psi)	(bbls)	(bbls)	
14:51	0	0.1	6.08	2,984		0.1	PSI TEST LINES
14:52	0	0.0	7.08	0		0.0	PUMP MUD FLUSH
14:55	0	2.0	8.48	154		5.5	BATCH UP CEMENT TO 14 PPG
14:58	51	2.0	14.43	154		10.0	END MUD FLUSH - PUMP H2O SPACER
15:00	0	2.0	14.10	159		15.0	END SPACER - PUMP CEMENT
15:45	0	2.0	18.40	77		104.2	END CEMENT (PUMPED 67.5 BBLs)
15:45	0	2.0	18.26	90		104.3	DISPLACE CEMENT WITH H2OZ
15:46	0	1.5	17.13	55		105.2	SHUT DOWN - END DISPLACEMENT
16:12	0	0.0	7.55	0		0.0	CIRCULATE WELL CLEAN
16:25	0	2.0	8.45	53		26.2	WELL CLEAN - SHUT DOWN
16:25	0	0.0	8.45	0		26.3	END JOB

Summary

Max Fl. Rate	Avg Fl. Rate	Max Psi	Avg Psi
2.0	1.6	2,984	56

Customer Acknowledgement:

Service Rating:

- ☐ Satisfactory
☐ Unsatisfactory

Cementer:

CORY THAUT

PRODUCTS USED

*Cement: Class G + Additives
- Density: 15.8 ppg / Yield: 1.53