



WELL LOCATION SURVEY

PROPERTY OWNERS: Mac Donald Oil Corp.

SURVEY OF WELL State 1-15 LOCATED 1320'E of W line & 660'N of S line

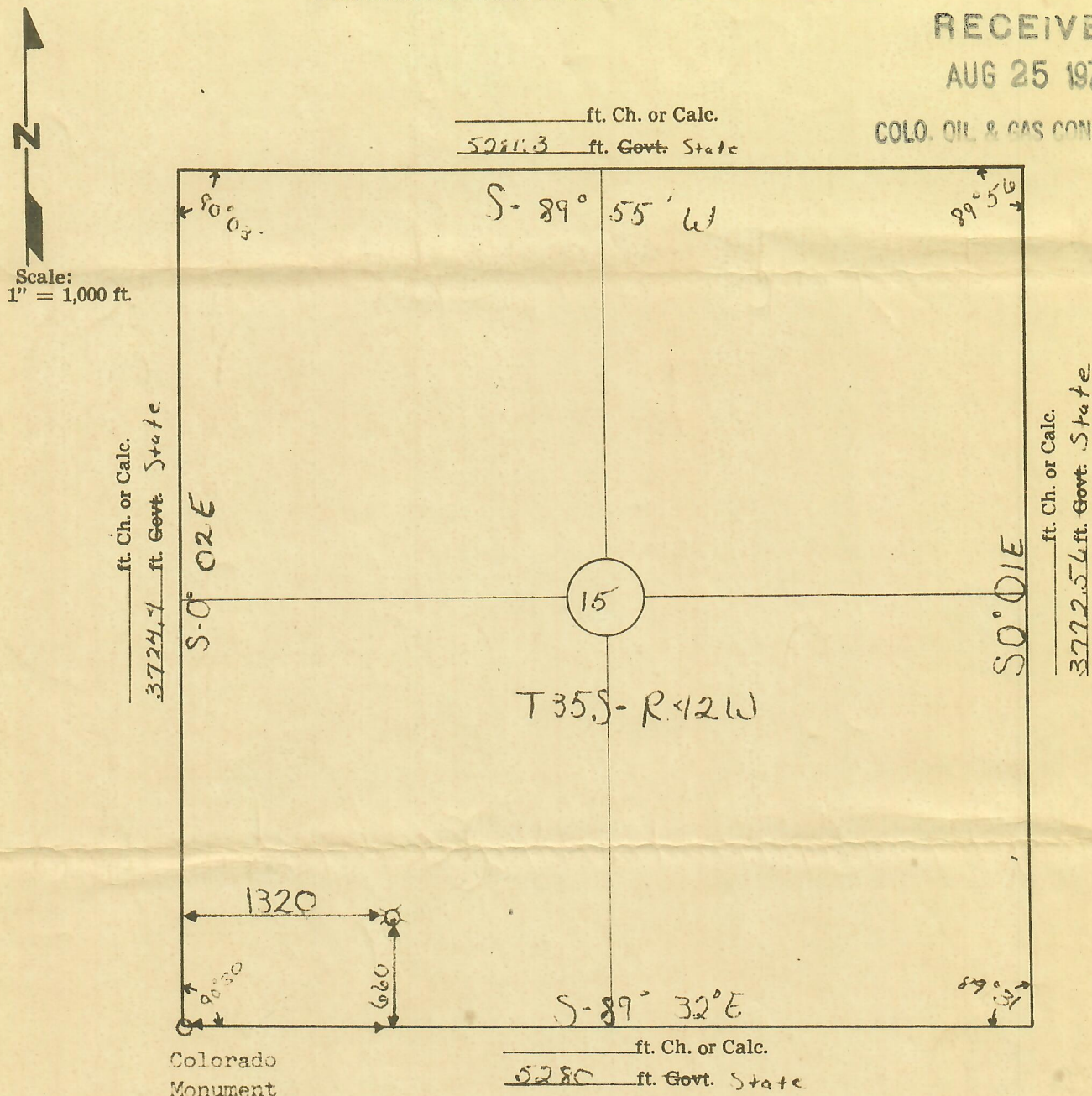
SECTION 15-35S-R42W COUNTY OF Baca STATE OF Colorado

SURVEYED 8-3-70 PLATTED 8-3-70 FEE WILL BE \$ 151.70

ELEVATION OF WELL LOCATION IS 3742.8

RECEIVED
AUG 25 1970

COLO. OIL & GAS CONS. COMM.



I, H.C. Williams being a Registered Professional Engineer in the State of Oklahoma Seal No. 423 do hereby certify that the above plat represents an accurate survey made under my supervision and that all measurements, bearings and monuments are correctly shown and indicated on the above plat as found or staked in the field as so dated above.

Signed: H.C. Williams
H. C. WILLIAMS AND ASSOCIATES
Consulting Engineer and Surveyors
407 Nall Tucker Village
Guymon, Oklahoma

BEST IMAGE
AVAILABLE