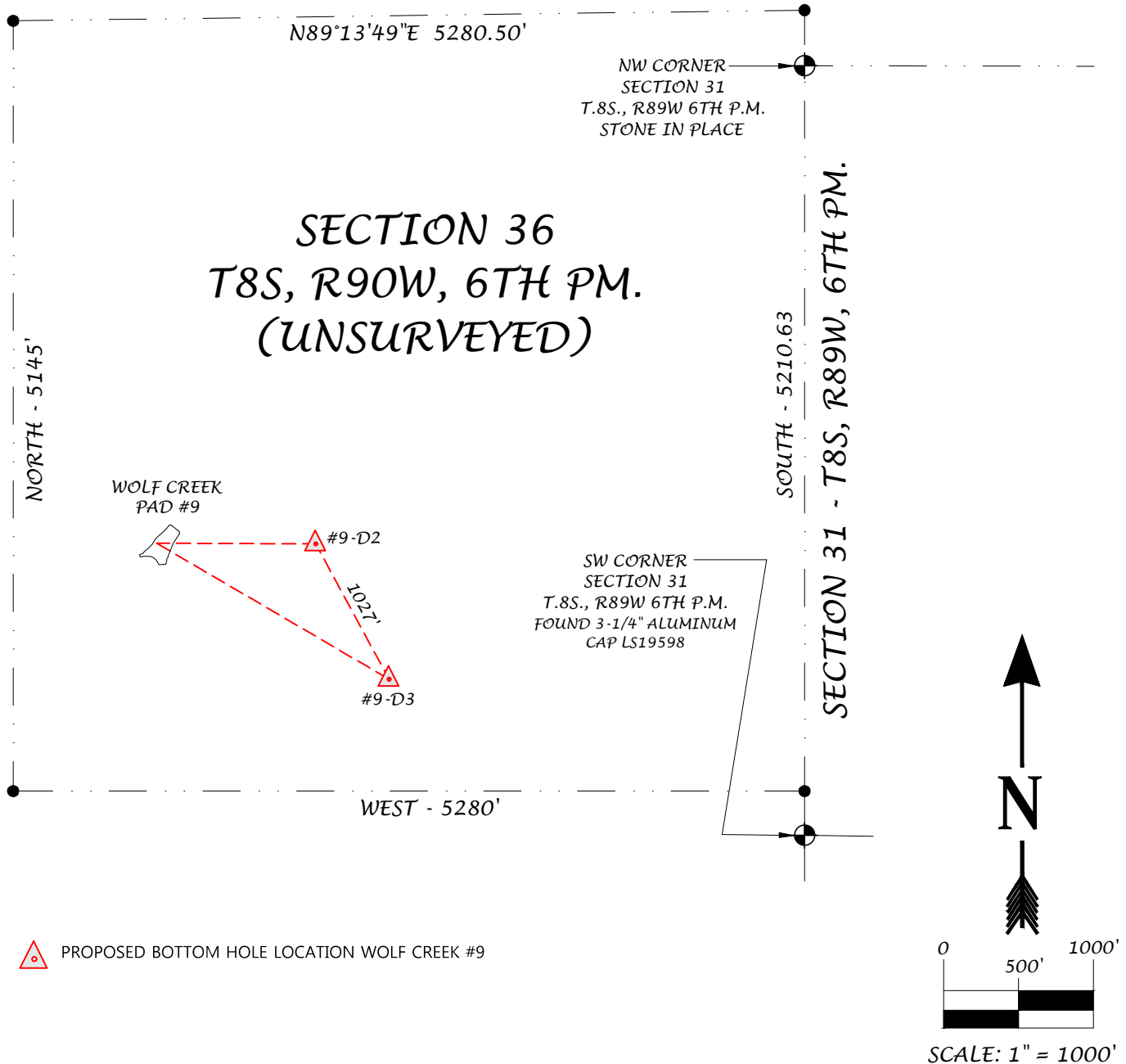


MULTI-WELL PLAN

TOWNSHIP 8 SOUTH, RANGE 90 WEST OF THE 6TH P.M.



BLACK HILLS ENERGY
SECTION 36, TOWNSHIP 8 SOUTH, RANGE 90 WEST OF 6TH P.M.
COUNTY OF PITKIN, STATE OF COLORADO



TRUE NORTH COLORADO, LLC.

A LAND SURVEYING AND MAPPING COMPANY
PO BOX 614 - 529 S WILD HORSE DRIVE
NEW CASTLE, COLORADO 81647
(970) 984-0474
www.truenorthcolorado.com

PROJECT NO: 2017-216

DATE: February 7, 2019

DRAWN

RPK

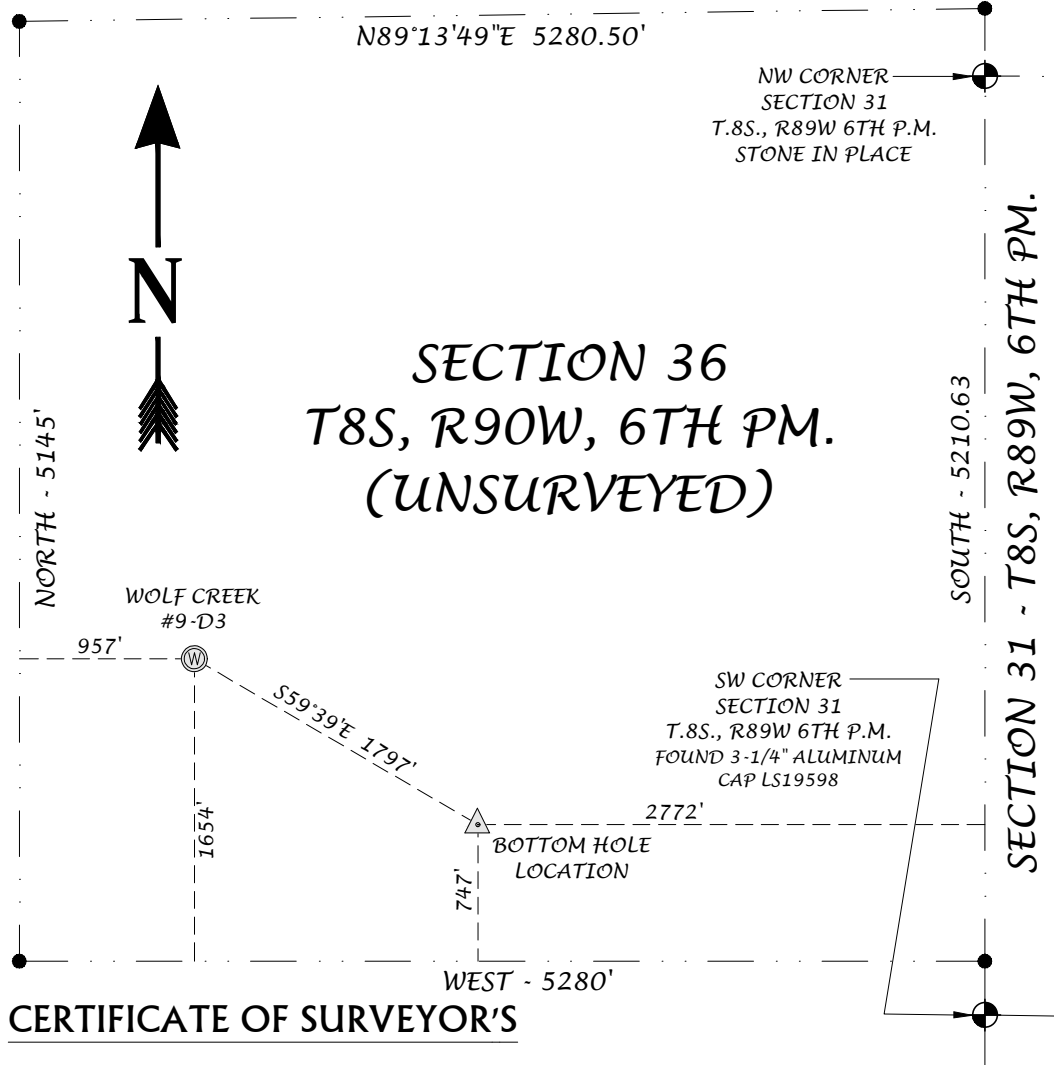
SURVEYED

LDV

SHEET
3 OF 6

WELL LOCATION PLAT

TOWNSHIP 8 SOUTH, RANGE 90 WEST OF THE 6TH P.M.



WELL NAME
WOLF CREEK #9-D3

GENERAL LOCATION
NW1/4SW1/4, SECTION 36
T. 8 S., R. 90 W., 6TH P.M.
PITKIN COUNTY

SURFACE LOCATION
1654' NORTH OF SOUTH LINE
957' EAST OF WEST LINE

SURFACE WELL LOCATION
NAD83

LAT: 39°18'46.34"(N)
LONG: 107°23'44.66"(W)
LAT: 39.312871
LONG: 107.395739

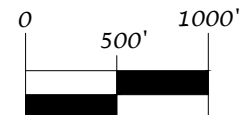
PDOP = 1.7
GROUND ELEVATION
10163.9-NAVD88 DATUM
BOTTOM HOLE LOCATION
747' NORTH OF SOUTH LINE
2772' WEST OF EAST LINE

BOTTOM HOLE LOCATION
NAD83
LAT: 39°18'37.69"(N)
LONG: 107°23'24.69"(W)
LAT: 39.310469
LONG: 107.390193

CERTIFICATE OF SURVEYOR'S

I, RODNEY P. KISER, DO HEREBY CERTIFY THAT THIS WELL LOCATION PLAT WAS PREPARED FROM AVAILABLE RECORDS, MAPS, FIELD STAKING AND LOCATION INFORMATION TAKEN DURING A FIELD SURVEY MADE UNDER MY DIRECTION AND IT CORRECTLY SHOWS THE LOCATION OF THE SURFACE WELL LOCATION.

- LATITUDES AND LONGITUDES ARE BASED ON NAD83, NGS CONTROL POINTS ROSEBUD, Q158 AND N158.
- WELL MEASUREMENTS ARE 90° FROM SECTION LINES.
- CURRENT SURFACE LAND USE: EXISTING WELL PAD WOLF CREEK #9, SURROUNDED BY U.S. PUBLIC LANDS.



SCALE: 1" = 1000'

TRUE NORTH
COLORADO

A LAND SURVEYING AND MAPPING COMPANY

BLACK HILLS ENERGY
SECTION 36, TOWNSHIP 8 SOUTH, RANGE 90 WEST OF 6TH P.M.
COUNTY OF PITKIN, STATE OF COLORADO



TRUE NORTH COLORADO, LLC.

A LAND SURVEYING AND MAPPING COMPANY
PO BOX 614 - 529 S WILD HORSE DRIVE
NEW CASTLE, COLORADO 81647
(970) 984-0474
www.truenorthcolorado.com

PROJECT NO: 2017-216

DATE: February 7, 2019

DRAWN

RPK

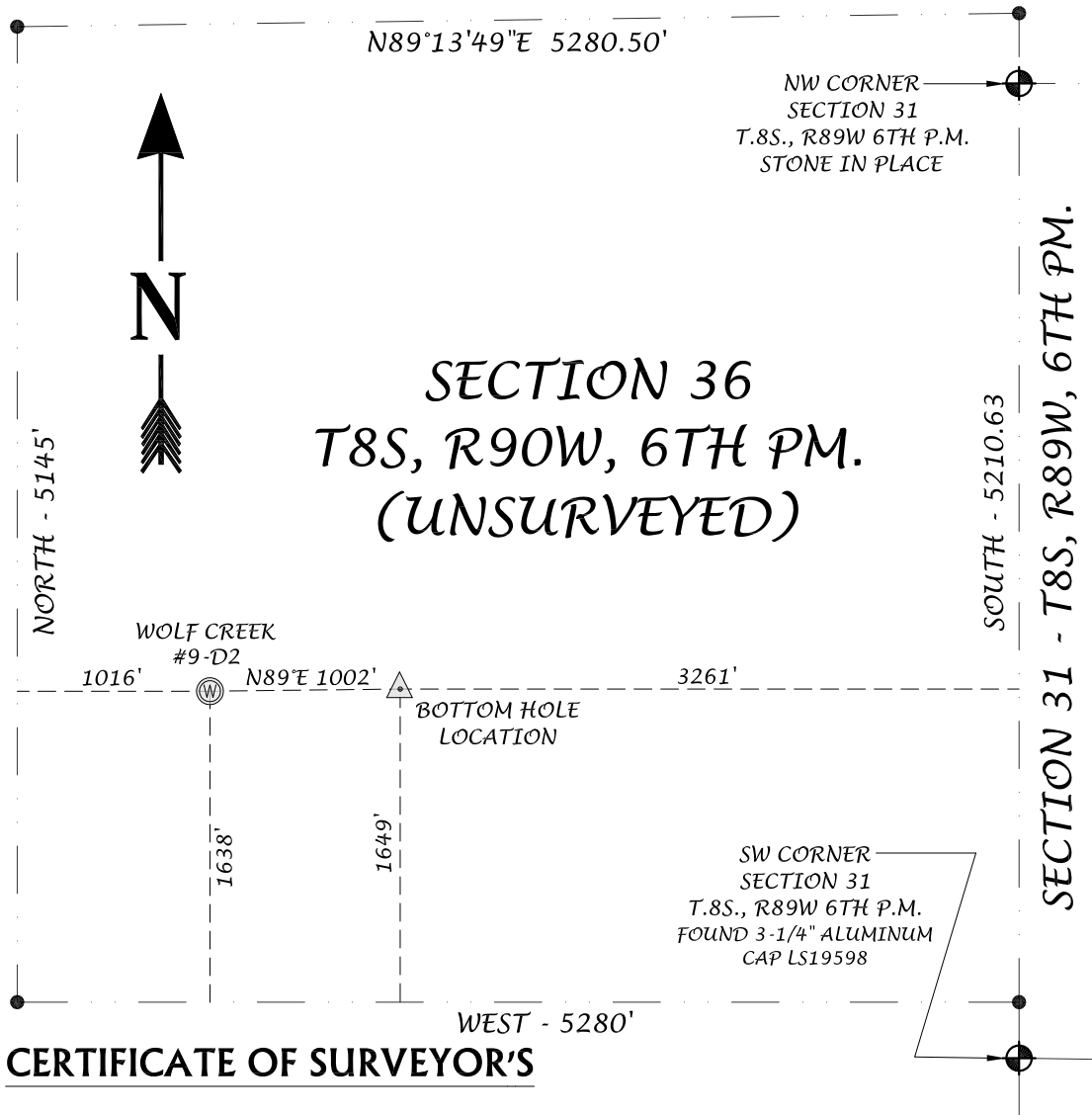
SURVEYED

LDV

SHEET
3 OF 6

WELL LOCATION PLAT

TOWNSHIP 8 SOUTH, RANGE 90 WEST OF THE 6TH P.M.



WELL NAME
WOLF CREEK #9-D2

GENERAL LOCATION
NW1/4SW1/4, SECTION 36
T. 8 S., R. 90 W., 6TH P.M.
PITKIN COUNTY

SURFACE LOCATION
1638' NORTH OF SOUTH LINE
1016' EAST OF WEST LINE

SURFACE WELL LOCATION

NAD83

LAT: 39°18'46.19"(N)
LONG: 107°23'43.91"(W)

LAT: 39.312831
LONG: 107.395531
PDOP = 1.7

GROUND ELEVATION
10163.9-NAVD88 DATUM

BOTTOM HOLE LOCATION
1649' NORTH OF SOUTH LINE
3261' WEST OF EAST LINE

BOTTOM HOLE LOCATION

NAD83

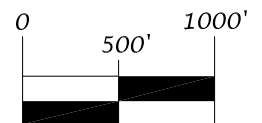
LAT: 39°18'46.51"(N)
LONG: 107°23'31.16"(W)

LAT: 39.312920
LONG: 107.391988

CERTIFICATE OF SURVEYOR'S

I, RODNEY P. KISER, DO HEREBY CERTIFY THAT THIS WELL LOCATION PLAT WAS PREPARED FROM AVAILABLE RECORDS, MAPS, FIELD STAKING AND LOCATION INFORMATION TAKEN DURING A FIELD SURVEY MADE UNDER MY DIRECTION AND IT CORRECTLY SHOWS THE LOCATION OF THE SURFACE WELL LOCATION AS STAKED ON THE GROUND.

- LATITUDES AND LONGITUDES ARE BASED ON NAD83, NGS CONTROL POINTS ROSEBUD, Q158 AND N158.
- WELL MEASUREMENTS ARE 90° FROM SECTION LINES.
- CURRENT SURFACE LAND USE: EXISTING WELL PAD WOLF CREEK #9, SURROUNDED BY U.S. PUBLIC LANDS.
- DATE OF FIELD WORK & SURFACE WELL LOCATION STAKING: AUGUST 20, 2018.



SCALE: 1" = 1000'

TRUE NORTH
COLORADO

A LAND SURVEYING AND MAPPING COMPANY

BLACK HILLS ENERGY
SECTION 36, TOWNSHIP 8 SOUTH, RANGE 90 WEST OF 6TH P.M.
COUNTY OF PITKIN, STATE OF COLORADO



TRUE NORTH COLORADO, LLC.

A LAND SURVEYING AND MAPPING COMPANY
PO BOX 614 - 529 S WILD HORSE DRIVE
NEW CASTLE, COLORADO 81647
(970) 984-0474
www.truenorthcolorado.com

PROJECT NO: 2017-216

DATE: December 1, 2018

DRAWN

RPK

SURVEYED

LDV

SHEET
3 OF 6