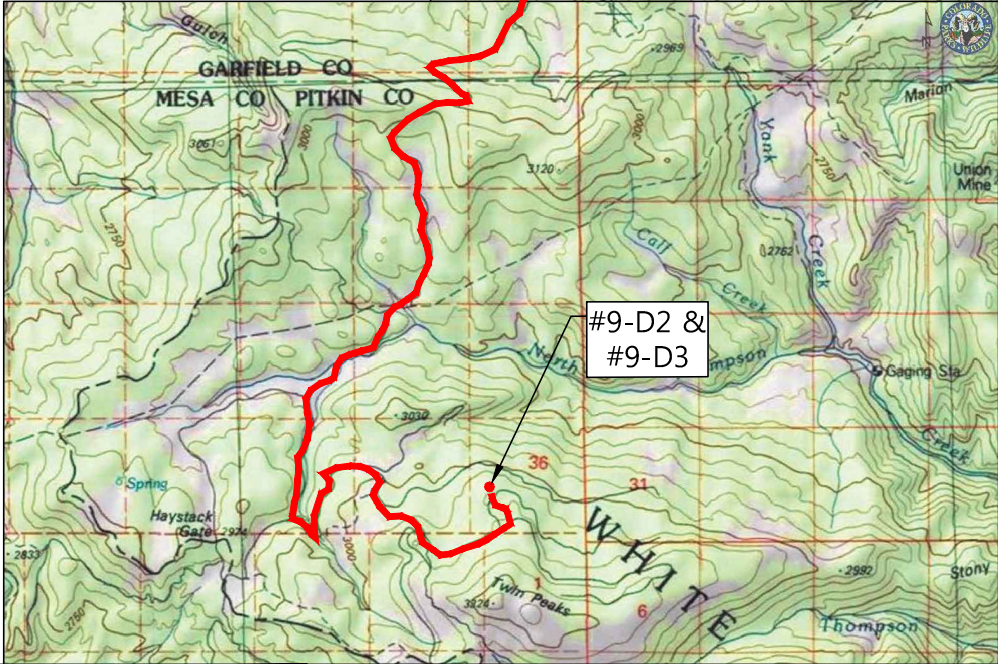
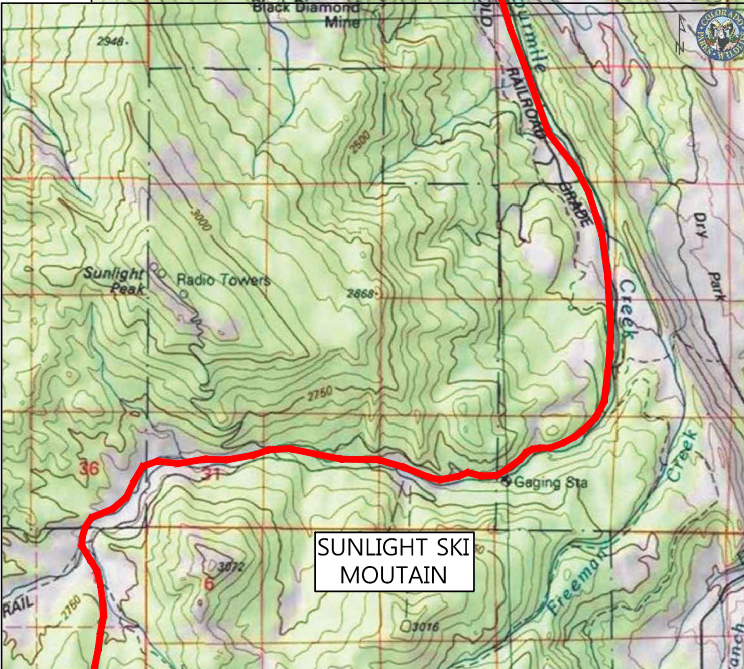
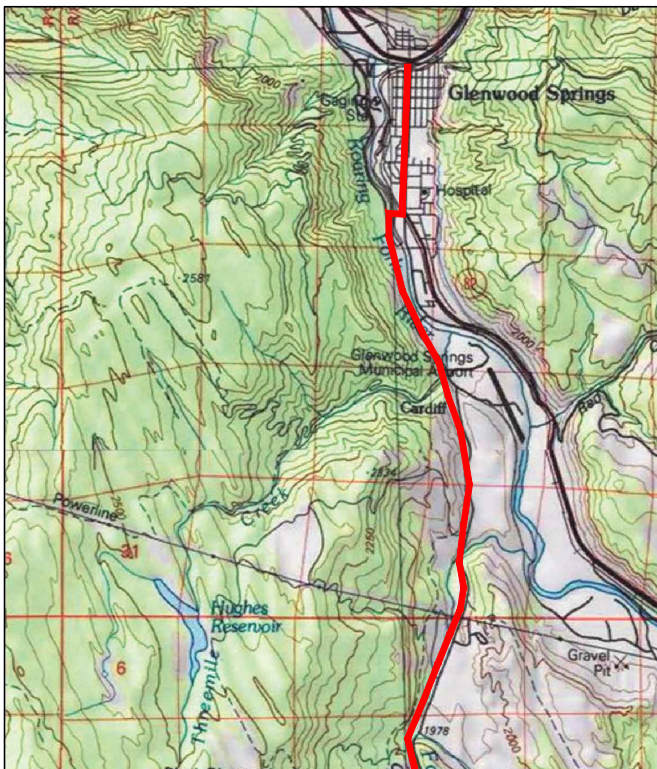




FROM GLENWOOD SPRINGS

GRAND AVE SOUTH TO MIDLAND AVENUE
TO FOUR MILE ROAD (CR 117) TO
SUNLIGHT SKI MOUNTAIN ABOUT 12± MILES
TAKE RIGHT ONTO FOUR MILE ROAD
(CR 117A) FOR 8± MILES

TO "T" INTERSECTION WITH WEST DIVIDE ROAD
GO LEFT OR CONTINUE ON FOUR MILE ROAD (CR117A)
FOR 2± MILES TO FOREST SERVICE ROAD (TWIN PEAKS)
TAKE A LEFT FOR 1/2± MILES TO A "T" INTERSECTION
HEAD NORTH (LEFT) FOR APPROXIMATELY
ONE-QUARTER MILE TO WOLF CREEK #9-D2 AND #9-D3.



TRUE NORTH
COLORADO

A LAND SURVEYING AND MAPPING COMPANY



BLACK HILLS ENERGY

ROAD MAP FROM GWS TO WELL PAD #9 WOLF CREEK
COUNTIES OF GARFIELD & PITKIN, STATE OF COLORADO



TRUE NORTH COLORADO, LLC.

A LAND SURVEYING AND MAPPING COMPANY
PO BOX 614 - 529 S. WILD HORSE
NEW CASTLE, COLORADO 81647
(970) 984-0474
www.truenorthcolorado.com

PROJECT NO: 2017-216

DATE: FEBRUARY 25, 2019

DRAWN

RPK

SURVEYED

SHEET
1 OF 1