

Company: Crestone Peak Resources Operating LLC

Well: Sam #3C-25H-M166

Field: Wattenberg

County: Weld State: Colorado

Isolation Scanner
Cement Evaluation
VDL Wide

County: Weld
Field: Wattenberg
Location: 1393' FSL & 310' FWL
Well: Sam #3C-25H-M166
Company: Crestone Peak Resources Operating LLC

Location:	1393' FSL & 310' FWL	Elev.:	K.B.	5107.00 ft
	NWSW 25 1N 66W		G.L.	5084.00 ft
	Lat/Long: 40.01884 / -104.733853		D.F.	5107.00 ft
	Permanent Datum:	Ground Level	Elev.:	5084.00 f
Log Measured From:		Kelly Bushing	23.00 ft	above Perm.Datum
Drilling Measured From:		Kelly Bushing		
API Serial No.	Section:	Township:	Range:	
05-123-46124	25	1N	66W	

Logging Date 16-Oct-2018

Run Number One

Depth Driller 11914.00 ft

Schlumberger Depth 6750.00 ft

Bottom Log Interval 6750.00 ft

Top Log Interval 50.00 ft

Casing Fluid Type Water

Salinity

Density 8.4 lbm/gal

Fluid Level 8.00 ft

BIT/CASING/TUBING STRING

Bit Size 8.50 in

From 2379.00 ft

To 11914.00 ft

Casing/Tubing Size 5.5 in

Weight 20 lbm/ft

Grade N/A

From 0.00 ft

To 11914.00 ft

Max Recorded Temperatures 187 degF

Logger on Bottom 16-Oct-2018 14:30:00

Unit Number 9108

Recorded By Alan Moreno

Witnessed By Keith Kershnik

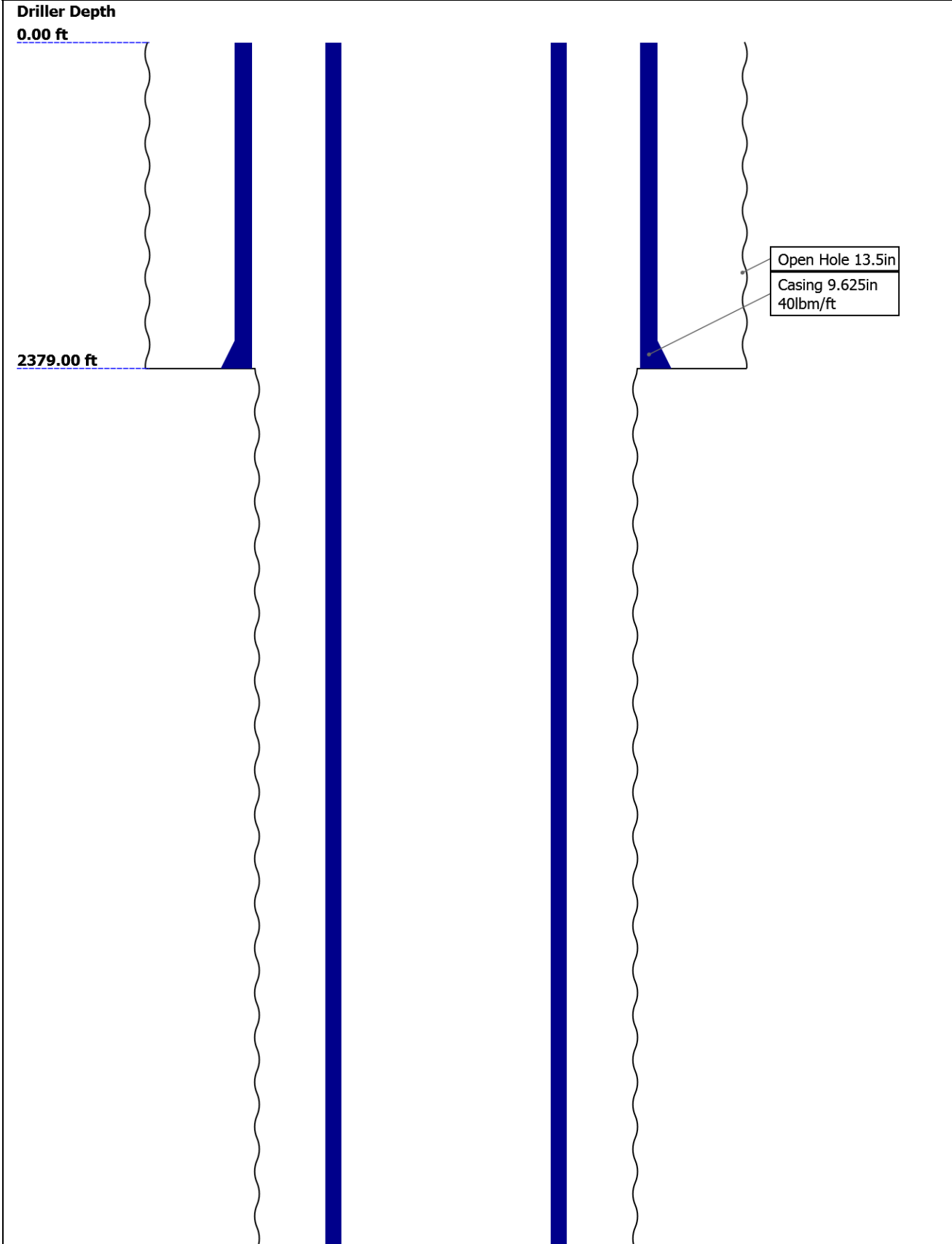
Disclaimer

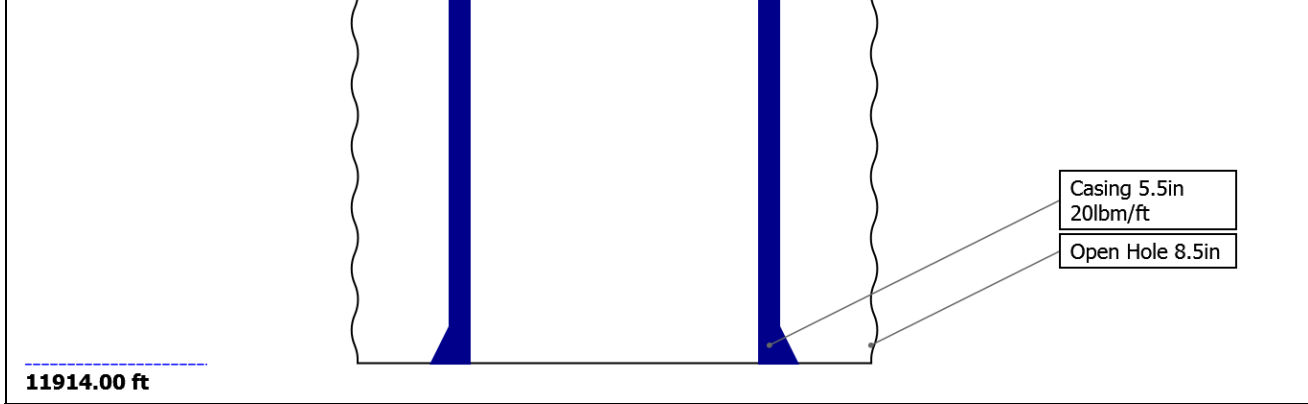
THE USE OF AND RELIANCE UPON THIS RECORDED-DATA BY THE HEREIN NAMED COMPANY (AND ANY OF ITS AFFILIATES, PARTNERS, REPRESENTATIVES, AGENTS, CONSULTANTS AND EMPLOYEES) IS SUBJECT TO THE TERMS AND CONDITIONS AGREED UPON BETWEEN SCHLUMBERGER AND THE COMPANY, INCLUDING: (a) RESTRICTIONS ON USE OF THE RECORDED-DATA; (b) DISCLAIMERS AND WAIVERS OF WARRANTIES AND REPRESENTATIONS REGARDING COMPANY'S USE AND RELIANCE UPON THE RECORDED-DATA; AND (c) CUSTOMER'S FULL AND SOLE RESPONSIBILITY FOR ANY INFERENCE DRAWN OR DECISION MADE IN CONNECTION WITH THE USE OF THIS RECORDED-DATA.

Contents

- 1. Header
- 2. Disclaimer
- 3. Contents
- 4. Well Sketch
- 5. Borehole Size/Casing/Tubing Record
- 6. Remarks and Equipment Summary
- 7. Depth Summary
- 8. One IBC VDL Wide 0 PSI
 - 8.1 Integration Summary
 - 8.2 Composite Summary
 - 8.3 Log (IBC VDL WIDE)
- 9. Tail

Well Sketch



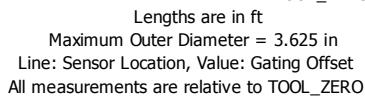


Borehole Size/Casing/Tubing Record

Bit						
Bit Size (in)	13.5	8.5				
Top Driller (ft)	0	2379				
Top Logger (ft)	0	2379				
Bottom Driller (ft)	2379	11914				
Bottom Logger (ft)	2379	11914				
Casing						
Size (in)	9.625	5.5				
Weight (lbm/ft)	40	20				
Inner Diameter (in)	8.835	4.778				
Grade	N/A	N/A				
Top Driller (ft)	0	0				
Top Logger (ft)	0	0				
Bottom Driller (ft)	2379	11914				
Bottom Logger (ft)	2379	11914				

Remarks and Equipment Summary

One: Toolstring				One: Remarks	
Equip name	Length	MP name	Offset	Toolstring ran as per tool sketch	
LEH-QT	30.16			5" gemcos and Houma kit used for centralization	
LEH-QT				10deg 6" resolution used for Main and repeat passes	
EDTC-B	27.24			Lead: 12.5ppg	
EDTH-B				Tail: 13.5ppg	
EDTG-A				Data affected at bottom due to deviation	
EDTC-B					
		CTEM	23.74		
		ACCZ	0.00		
		HV	0.00		
		Gamma	21.87		
		Ray			
		TelStatu	20.74		
		s			
AH-184[20.74				
2]					
AH-184[18.74				
1]					
USIT-E	16.74				
ECH-MFA					
USAC-A					
USIS-A					
USSC-B					
IBCS-A					
EAP-GENC					



One

Depth Measuring Device

Type	IDW-B		
Serial Number	6455		
Calibration Date	27-Jul-2018		
Calibrator Serial Number	57		
Calibration Cable Type	7-32ASXS		
Wheel Correction 1	-1		
Wheel Correction 2	1		

Tension Device

Type	CMTD-B/A		
Serial Number	1703		
Calibration Date	29-Jul-2018		
Calibrator Serial Number	88310A		
Number of Calibration Points	10		
Calibration Root Mean Square Error	6		
Calibration Peak Error	9		

Logging Cable

Type	7-32AS-XS		
Serial Number			
Length	21111.00 ft		
Conveyance Type	Wireline		
Rig Type	Crane		

One:Depth Control Parameters

Depth Control Remarks

Log Sequence	First Log In the Well	all Schlumberger depth control procedures followed
Rig Up Length At Surface		IDW used as primary depth control, Z-chart used as secondary
Rig Up Length At Bottom		
Rig Up Length Correction		

Stretch Correction
Tool Zero Check At Surface

One

IBC VDL Wide 0 PSI

Pass Summary

Run Name	Pass Objective	Direction	Top	Bottom	Start	Stop	DSC Mode	Depth Shift	Include Parallel Data
One	Log[4]:Up	Up	46.38 ft	6759.31 ft	16-Oct-2018 2:28:16 PM	16-Oct-2018 5:07:46 PM	ON	6.53 ft	Yes

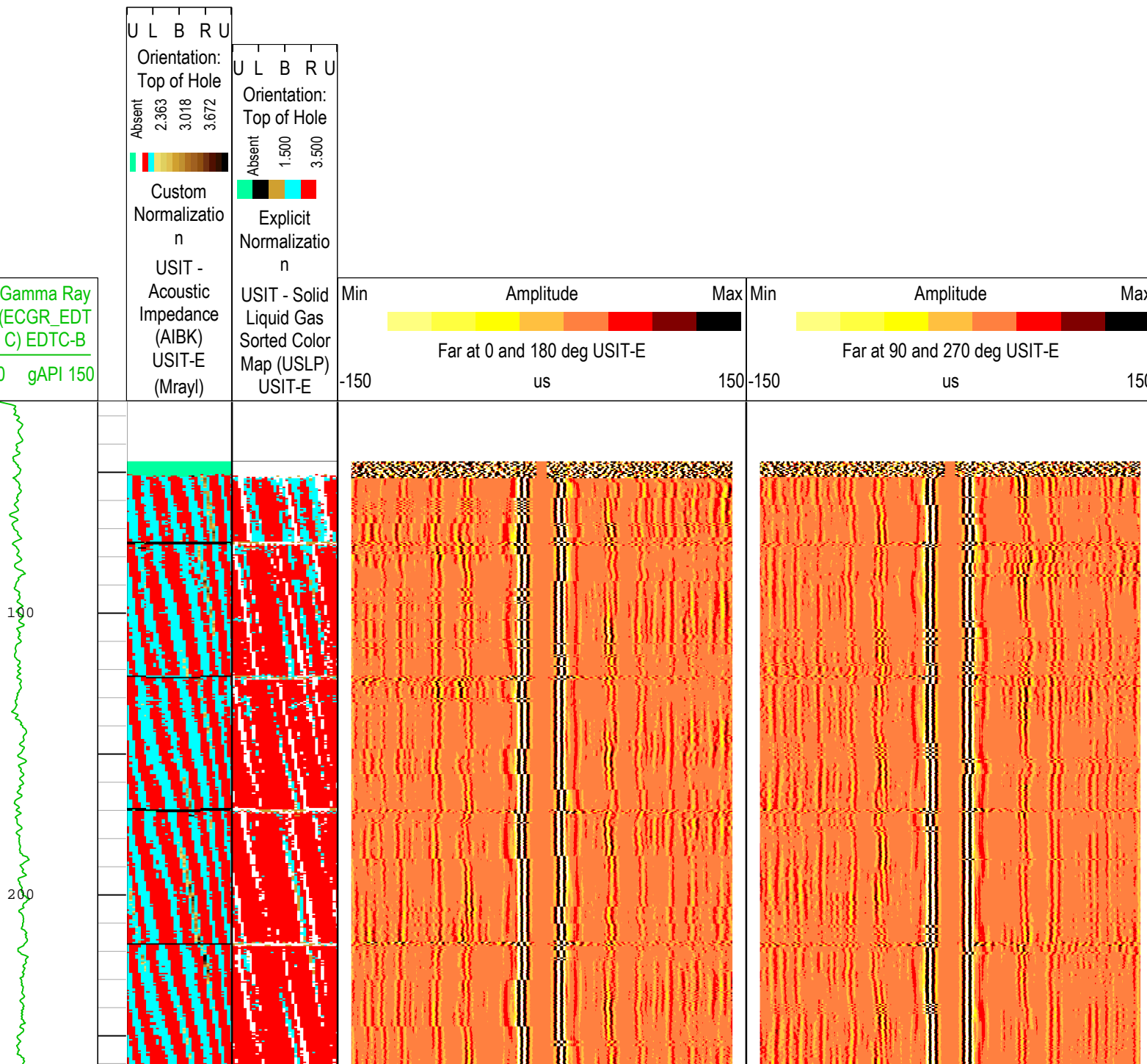
All depths are referenced to toolstring zero

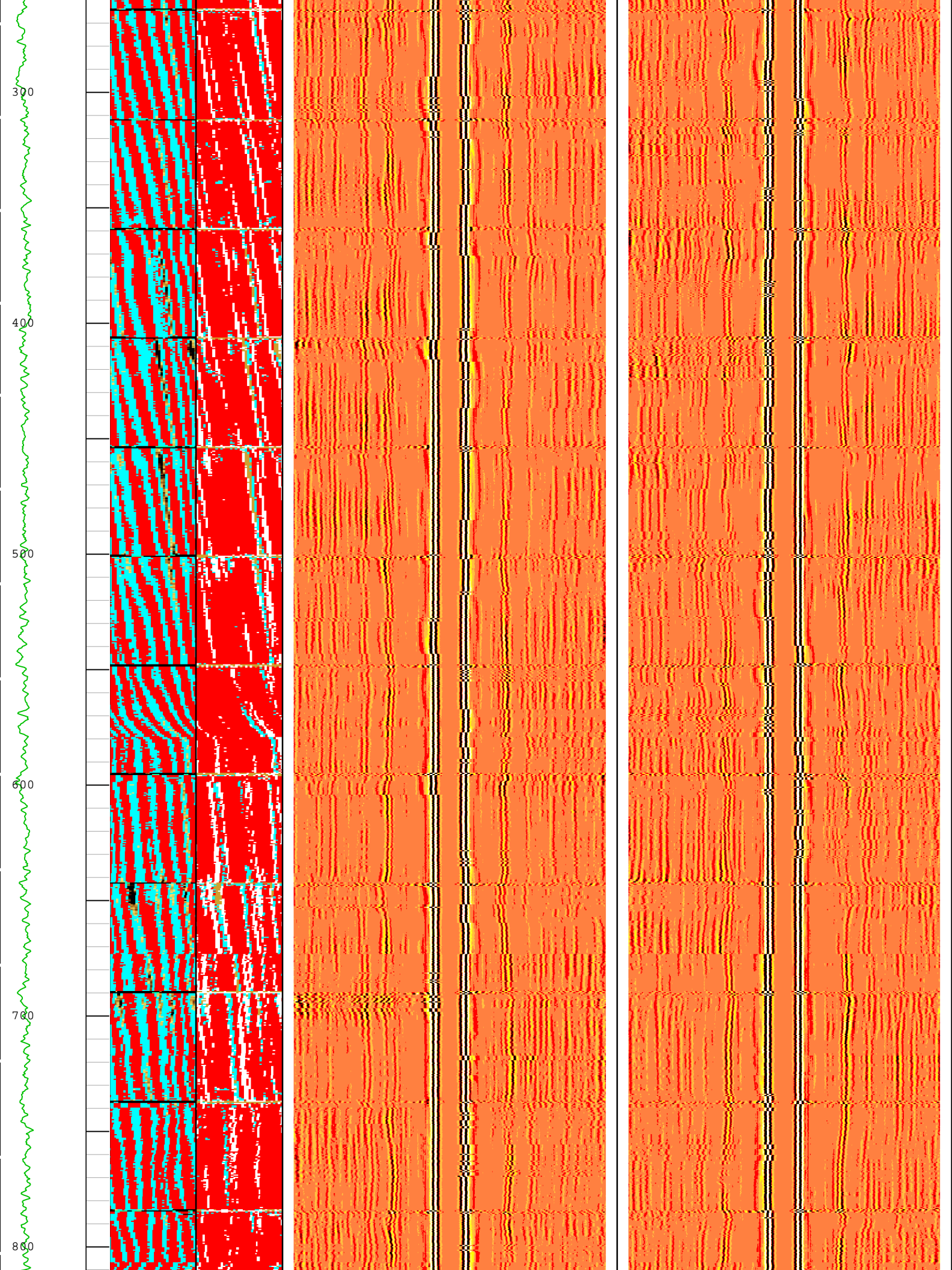
Log

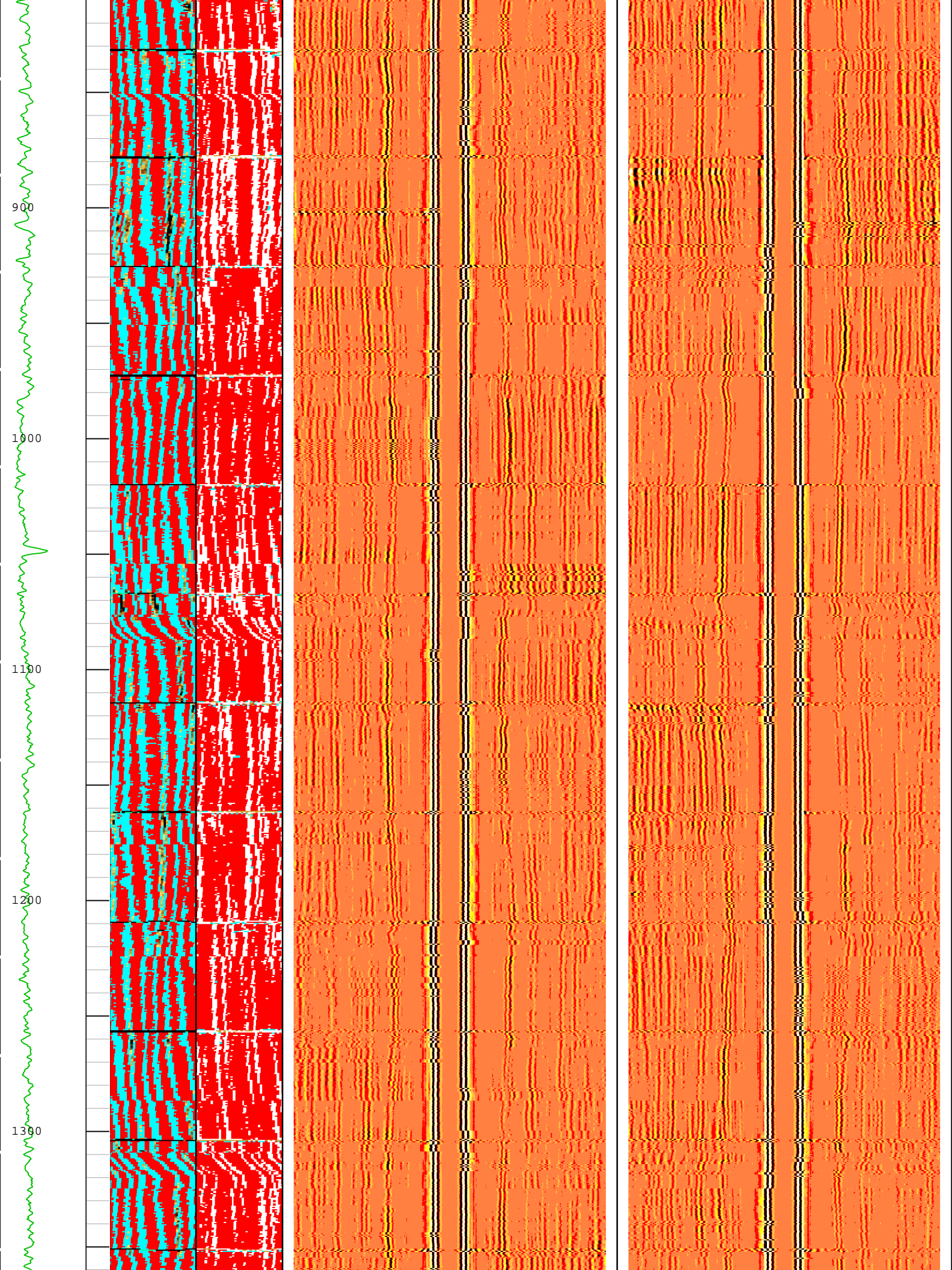
Company:Crestone Peak Resources Operating LLC Well:Sam #3C-25H-M166
One: Log[4]:Up:S006

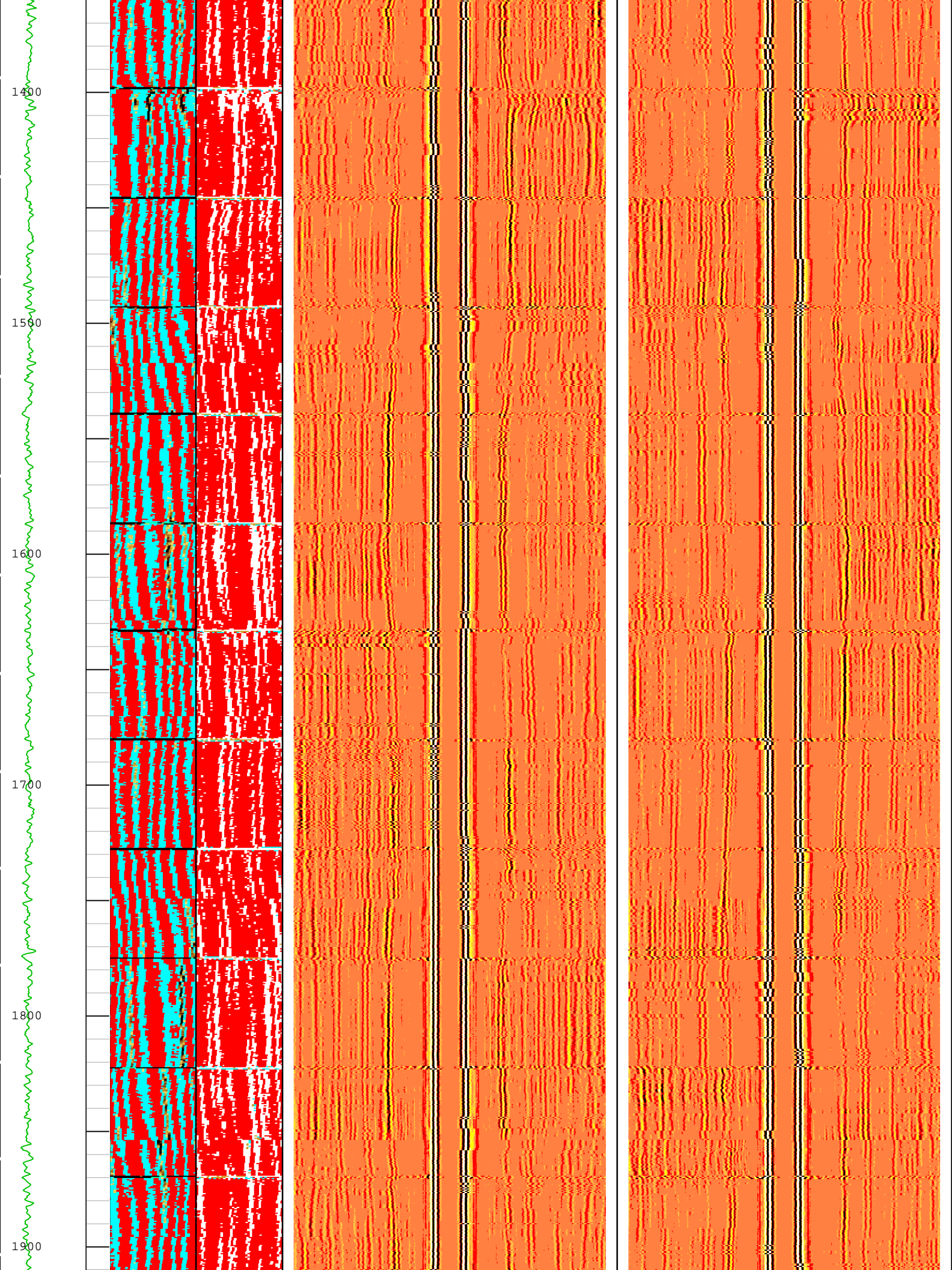
Description: USI IBC VDL WIDE Format: Log (IBC VDL WIDE) Index Scale: 2 in per 100 ft Index Unit: ft Index Type: Measured Depth Creation Date: 17-Oct-2018 12:44:34

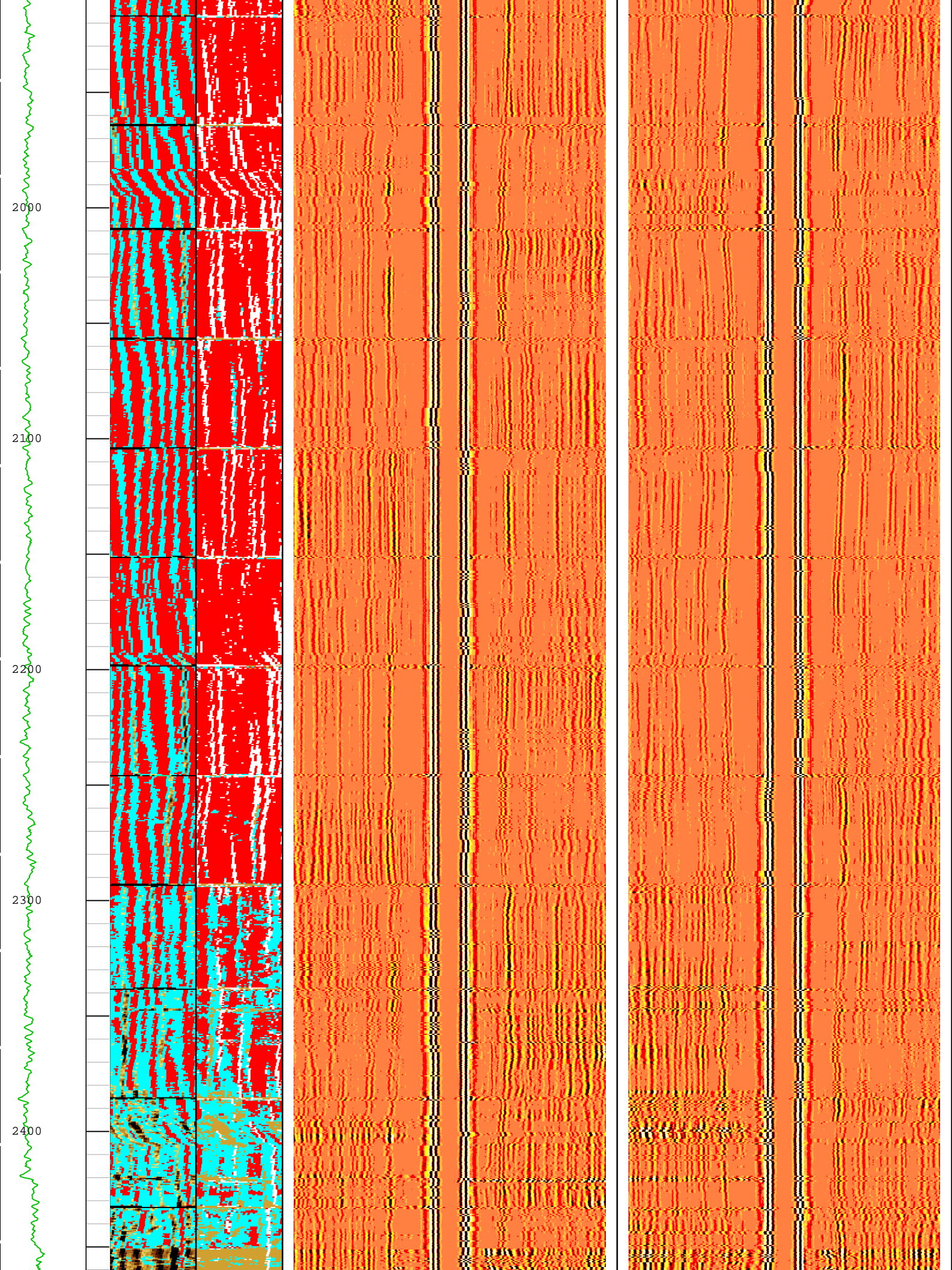
TIME_1900 - Time Marked every 60.00 (s)

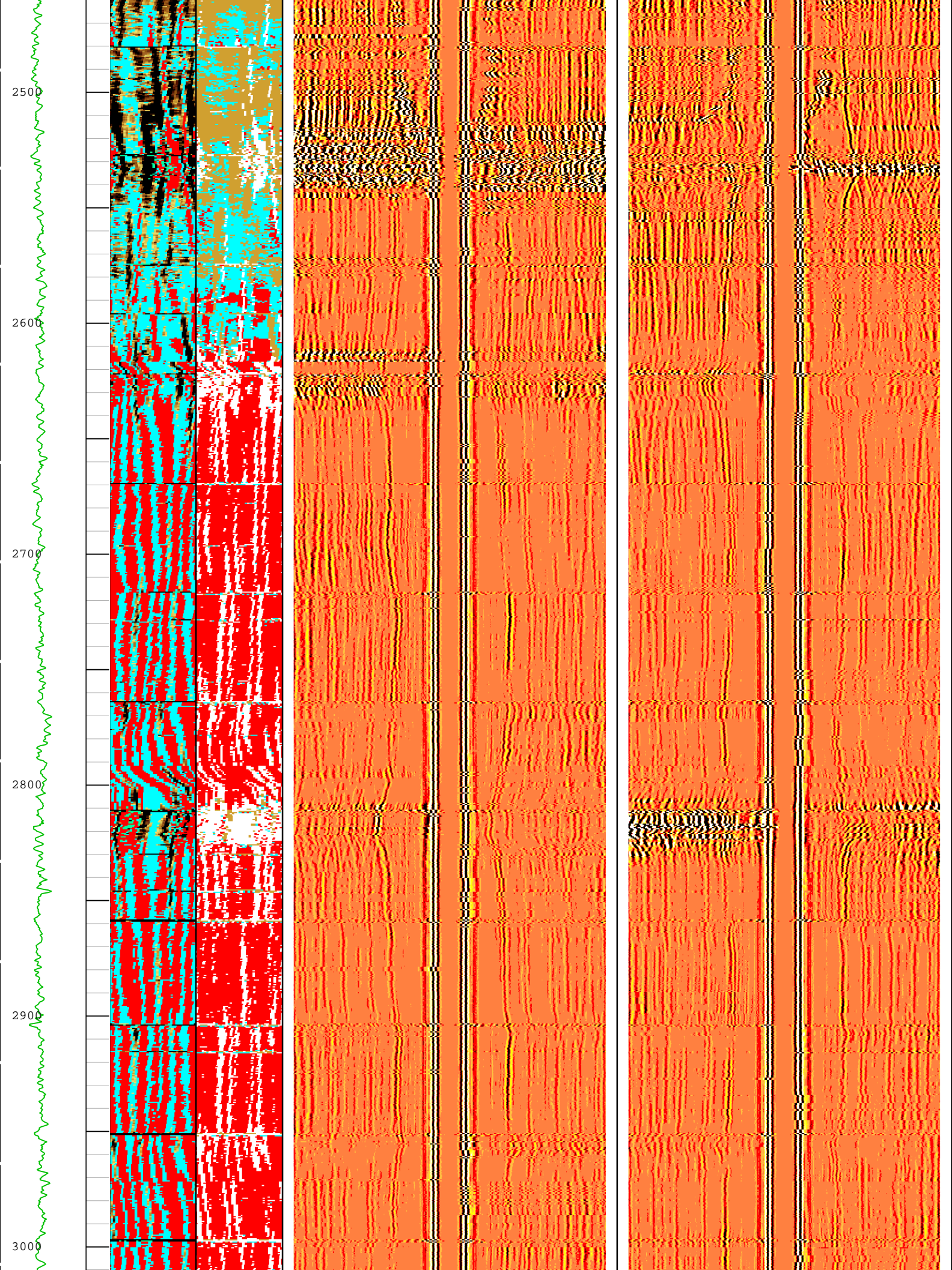


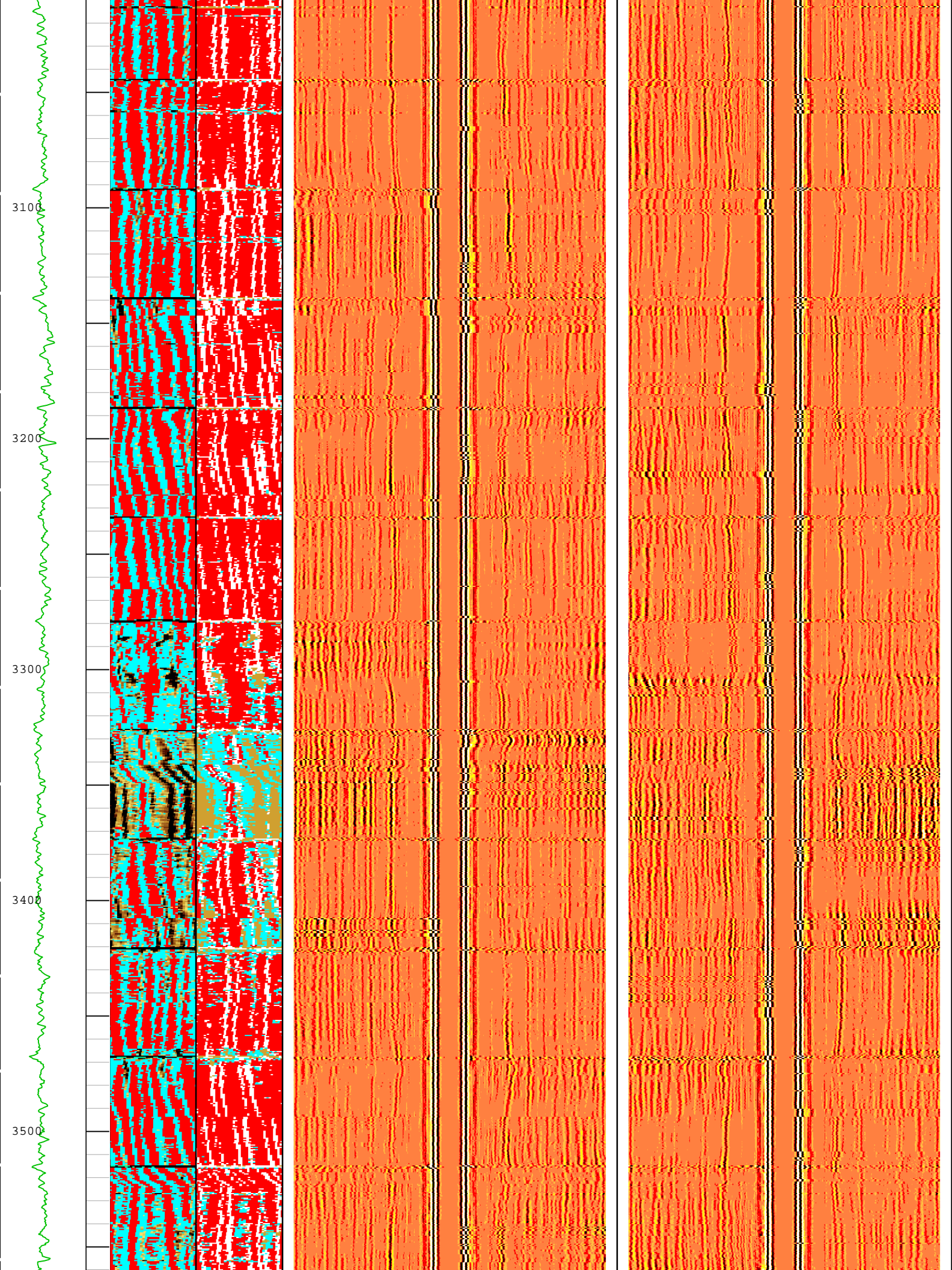


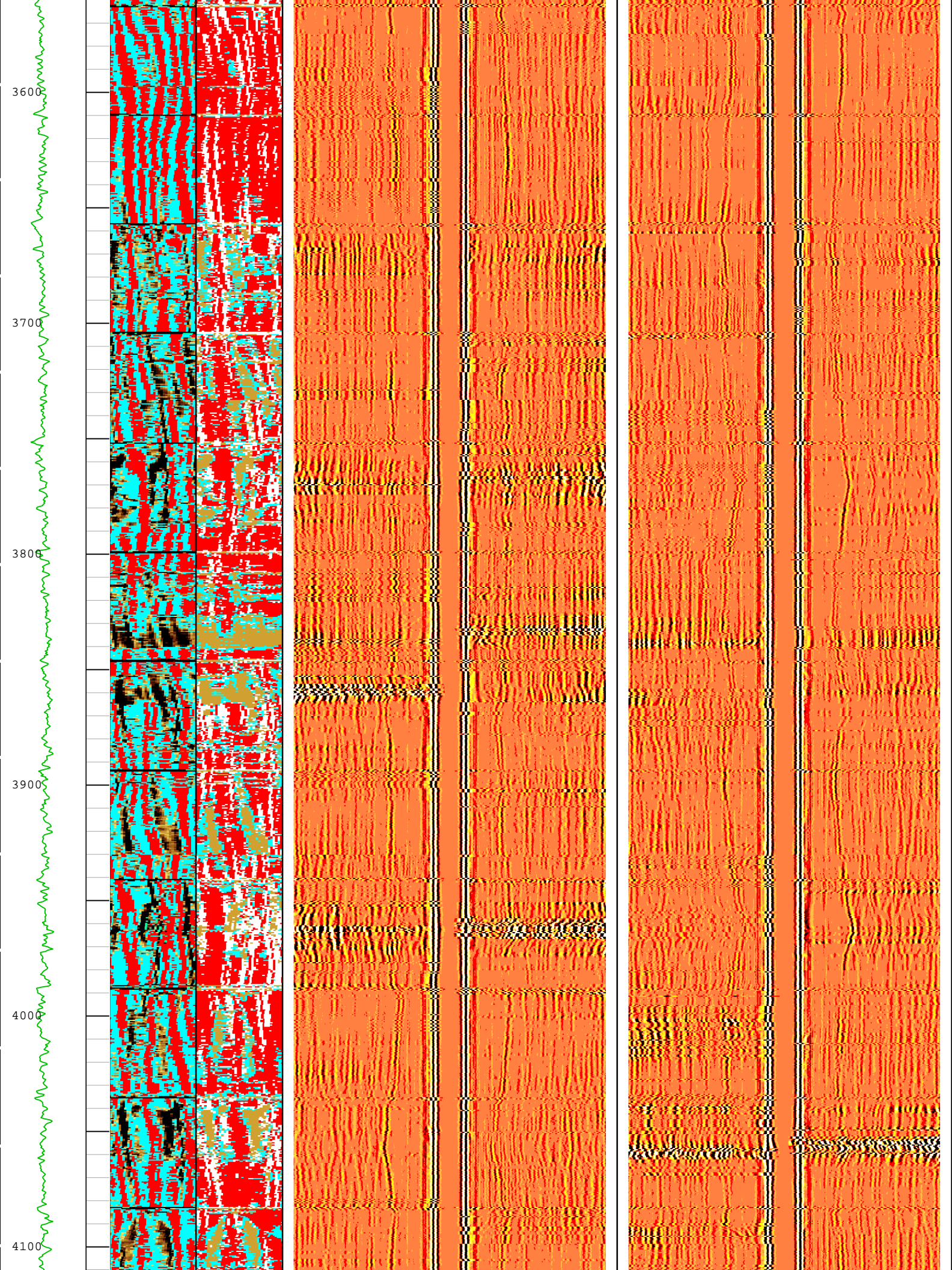


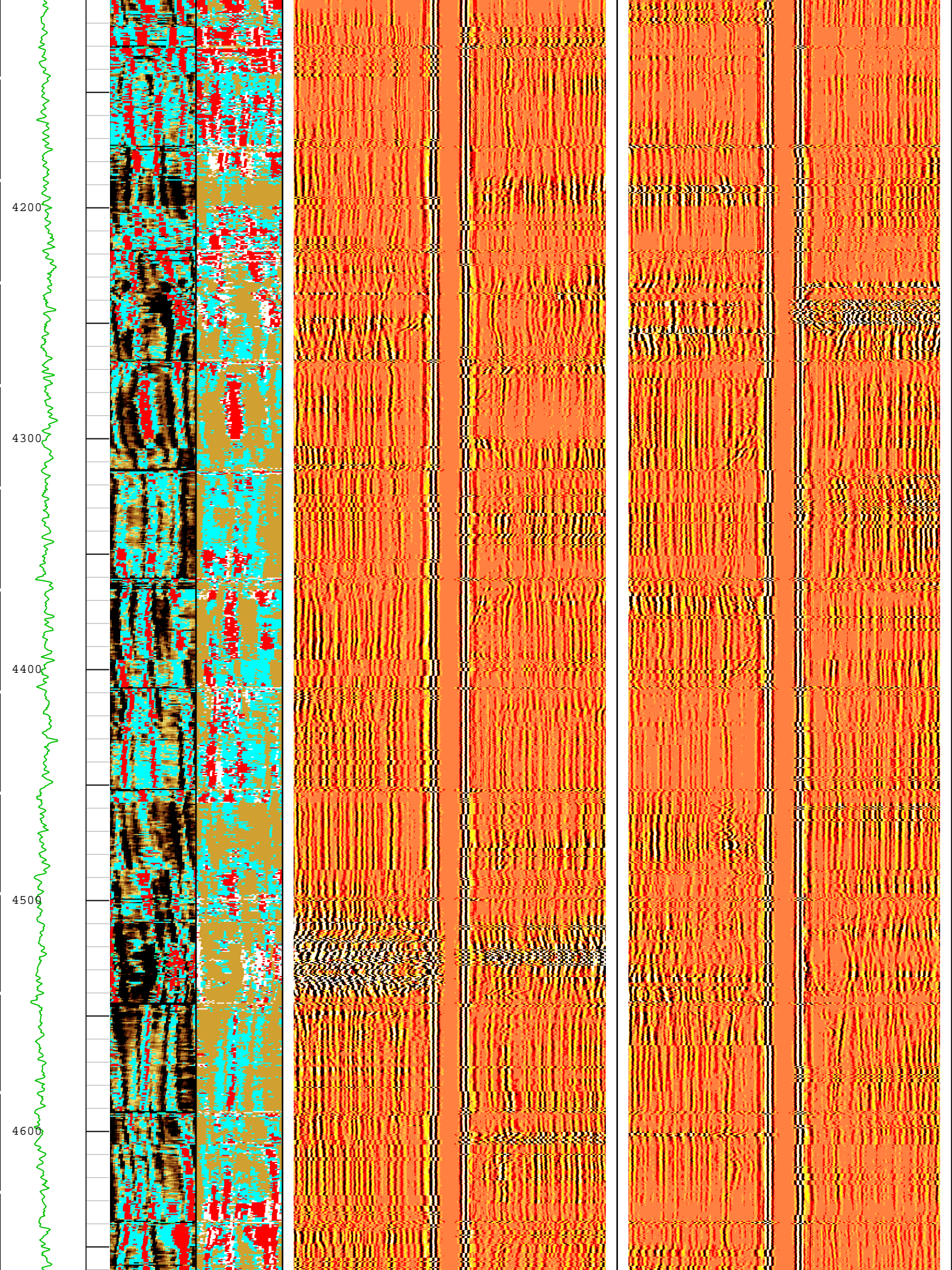


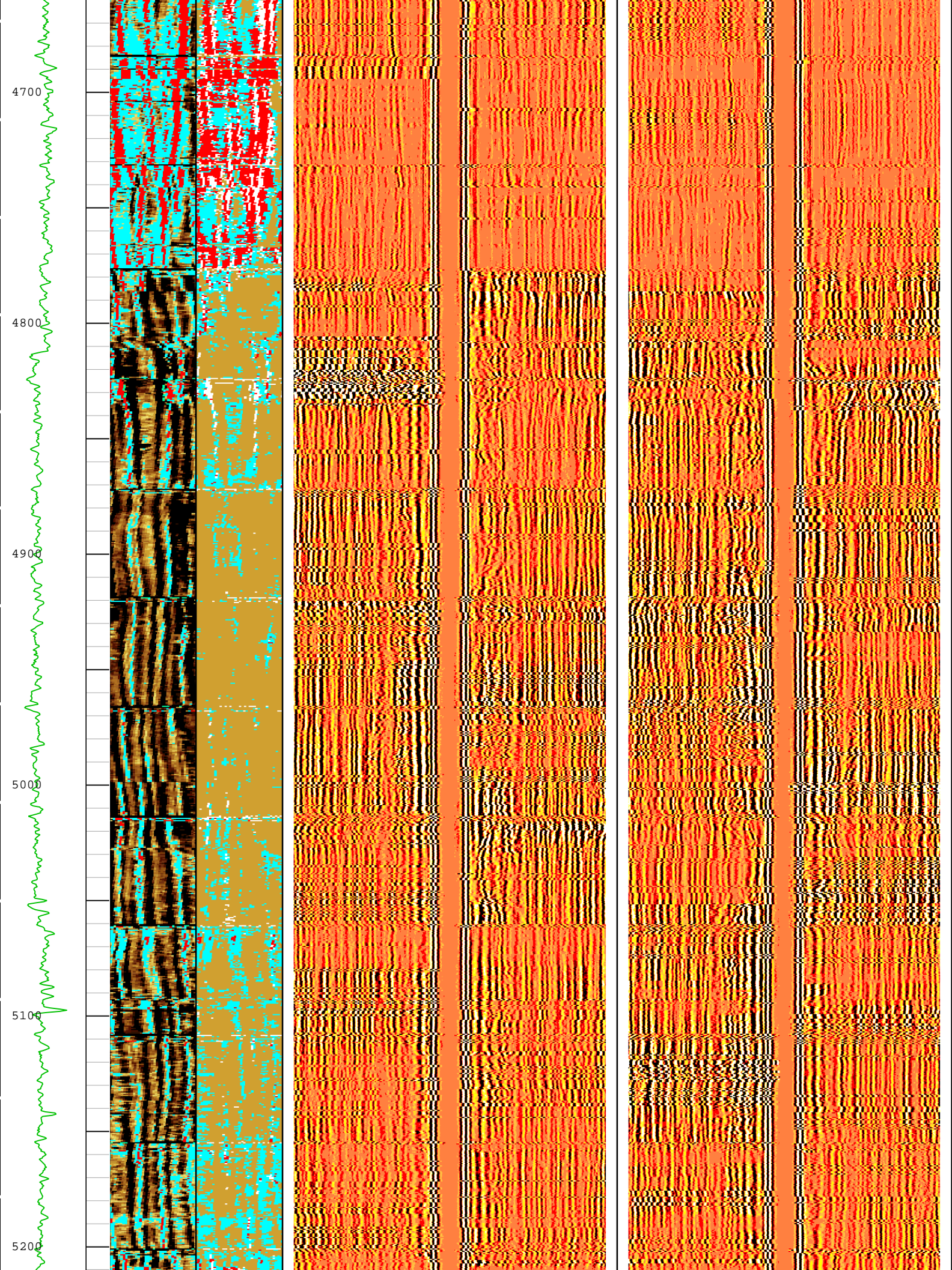


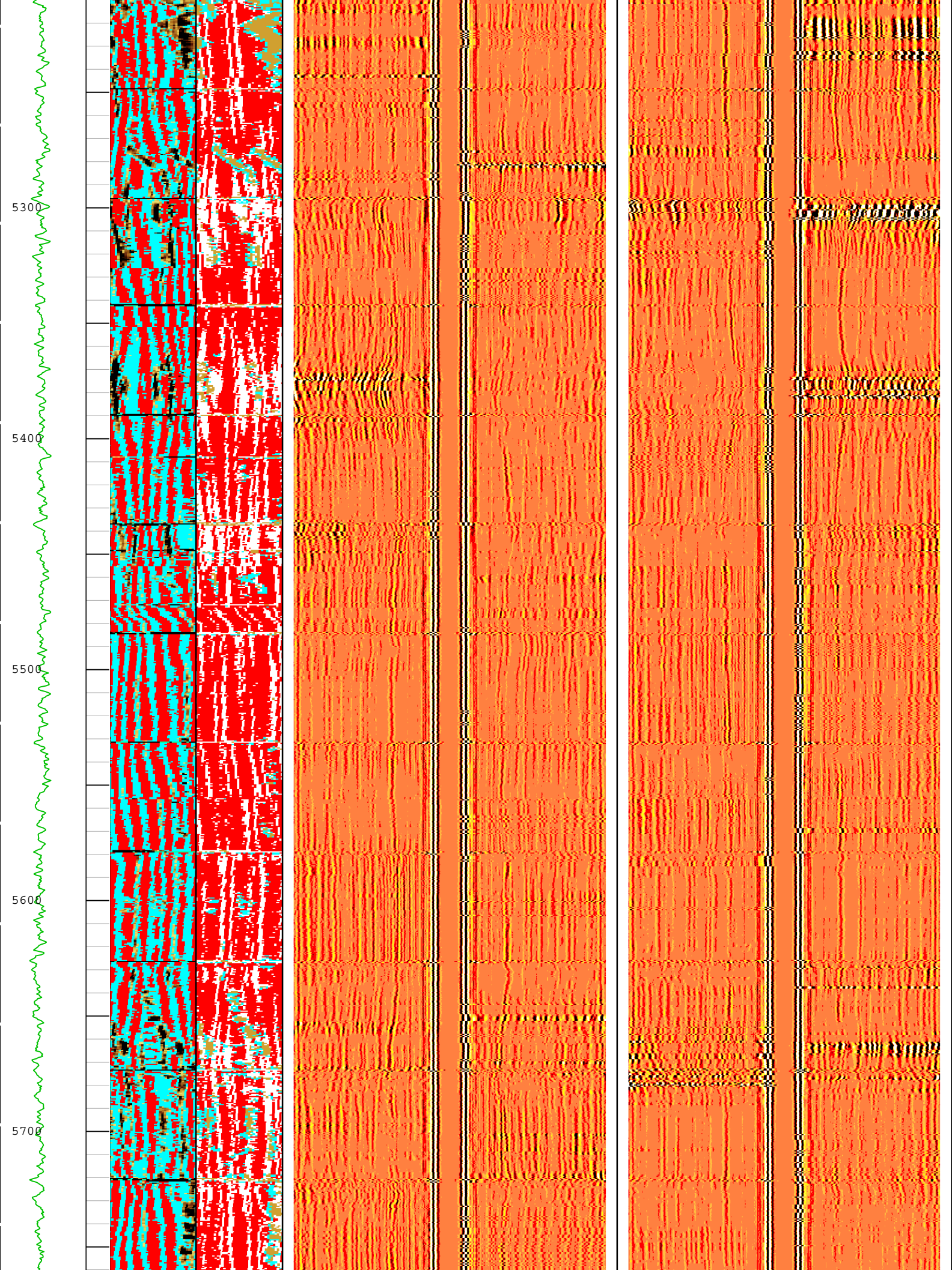


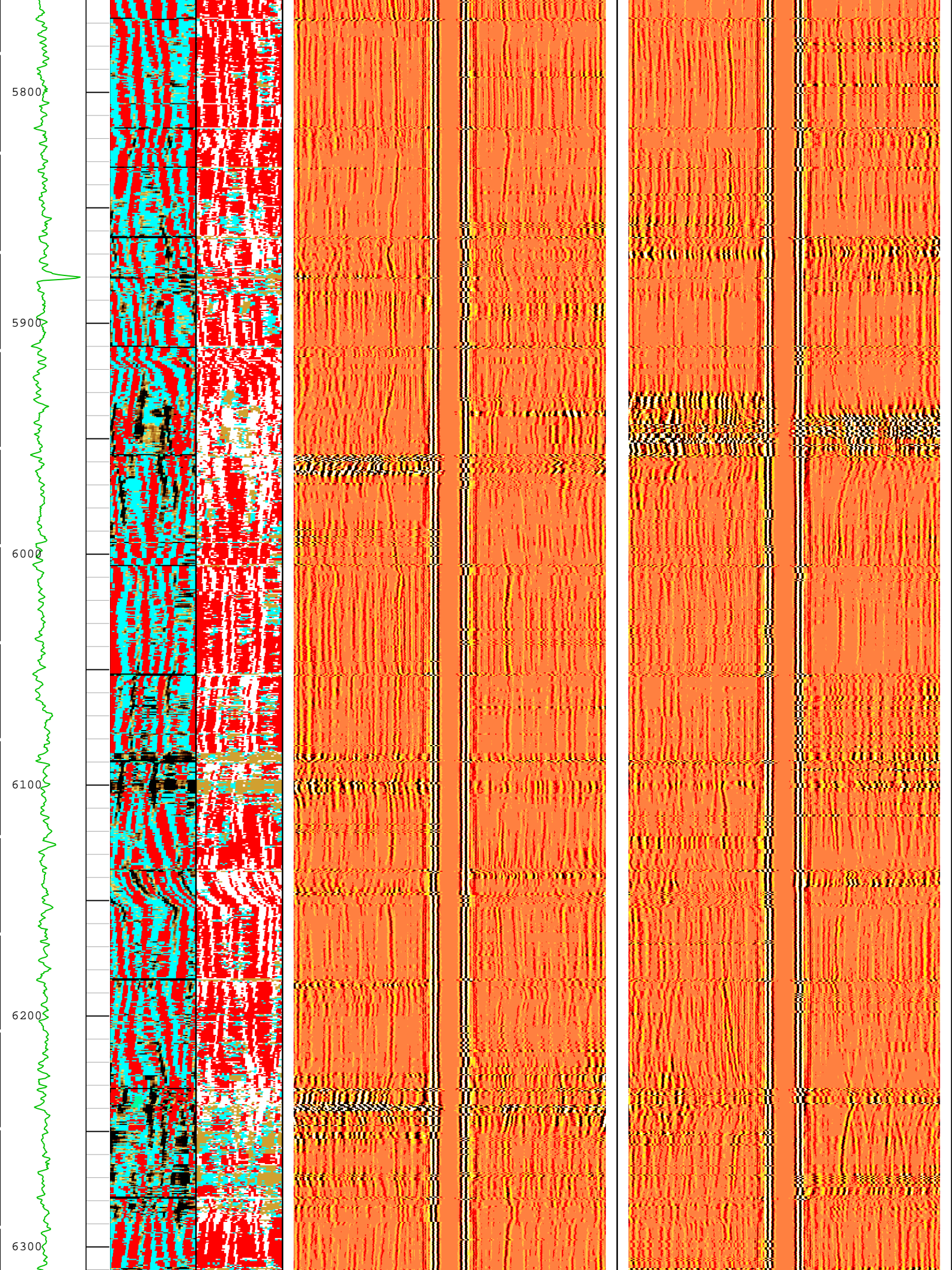


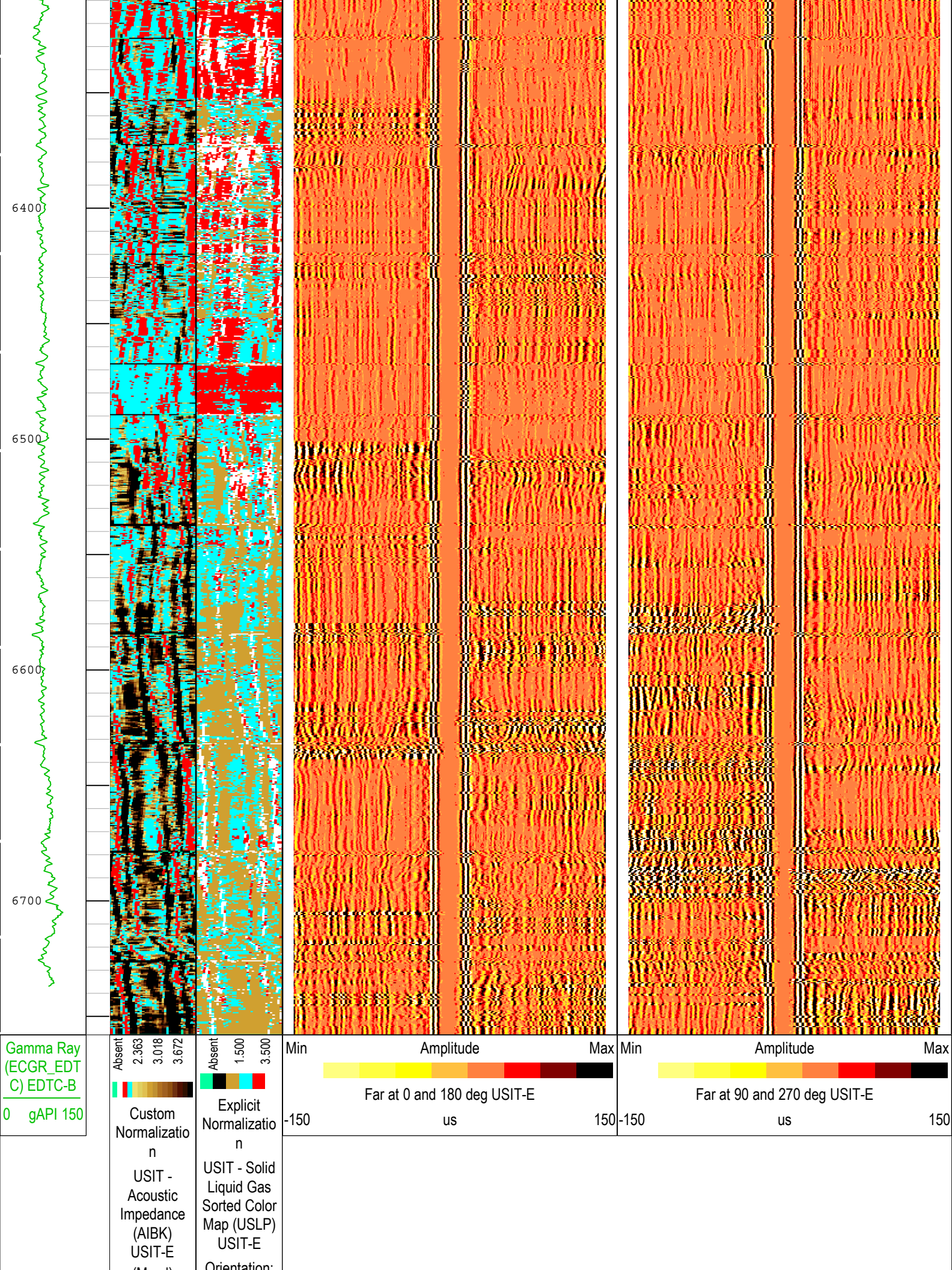












(Mrayl)	Orientation:
Top of Hole	Top of Hole
U L B R U	U L B R U
U L B R U	

TIME_1900 - Time Marked every 60.00 (s)

Description: USI IBC VDL WIDE Format: Log (IBC VDL WIDE) Index Scale: 2 in per 100 ft Index Unit: ft Index Type: Measured Depth Creation Date: 17-Oct-2018 12:44:34

County:	Weld
State:	Colorado
Isolation Scanner	
Cement Evaluation	
VDL Wide	