

# Interim Reclamation and Stormwater Inspection

April 19, 2019

Operator: BURLINGTON RESOURCES OIL & GAS LP- #26580

Location ID: 454808

Inspection Document #: 697500032

Arapahoe County, CO

NWSW Section 3 T4S R64W

Chris Binschus  
Reclamation Specialist, COGCC



**COLORADO**  
Oil & Gas Conservation  
Commission

Department of Natural Resources

Inspection Photos  
Location Name: Arkansas 4-64 3-2  
Location ID: 454808

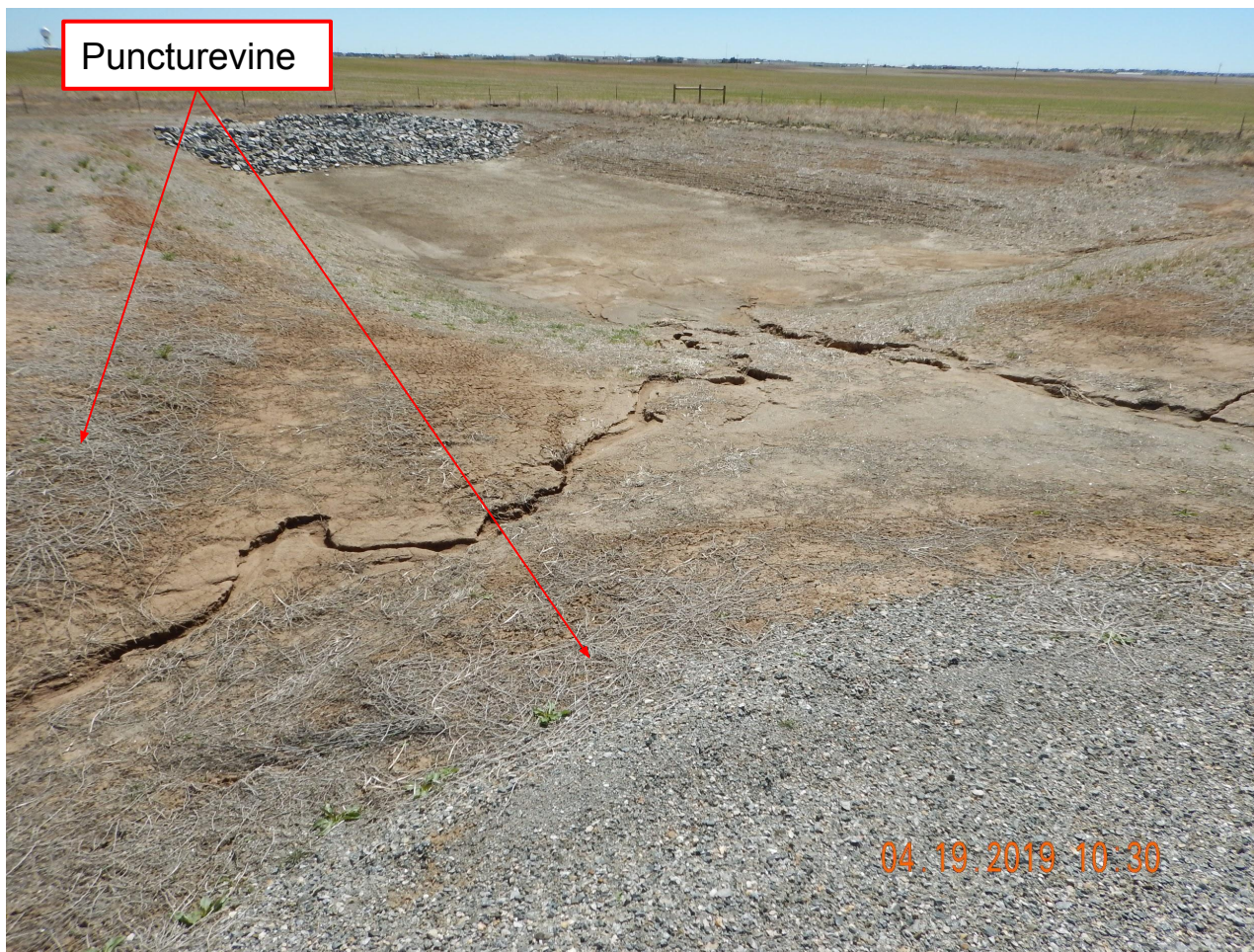


**Photo 1.** Photo taken from the entrance of the location, facing North. Operator has constructed the location and set conductors, but has not started drilling operations.



**Photo 2.** Photo taken from the entrance of the location, facing West. After Operations are completed, this appears to be the only area that will be reclaimed for Interim Reclamation.

Inspection Photos  
Location Name: Arkansas 4-64 3-2  
Location ID: 454808



**Photo 3.** Photo taken from the southeastern well location, facing Southeast. Photo illustrates erosion along the ditches and inlet of the sediment basin. Operator has failed to stabilize the ditches (i.e., no check dams to reduce the speed of stormwater). Also, Operator has failed to control Puncturevine which was observed throughout the disturbance area.

Inspection Photos  
Location Name: Arkansas 4-64 3-2  
Location ID: 454808

Puncturevine

04.19.2019 10:30

**Photo 4.** Photo taken from the southeastern well location, facing North. Photo illustrates the ditch BMP with no check dams.



04.19.2019 10:31

**Photo 5.** Photo taken from the northeastern well location, facing Northeast. Photo illustrates rill erosion along the cut slope.

Inspection Photos  
Location Name: Arkansas 4-64 3-2  
Location ID: 454808



**Photo 6.** Photo taken from the northern cut slope, facing West. Operator has installed erosion control blankets along portions of the cut slope. Operator has not sufficiently stabilized all cut slope areas.

Inspection Photos  
Location Name: Arkansas 4-64 3-2  
Location ID: 454808



**Photo 7.** Photo taken from the northern topsoil stockpile, facing East. Photo illustrates Puncturevine which has established throughout the entire topsoil stockpile. Operator has attempted to seed the topsoil stockpile; however, there is not sufficient establishment to protect from wind and water erosion, and to prevent weed establishment.

Inspection Photos  
Location Name: Arkansas 4-64 3-2  
Location ID: 454808



**Photo 8.** Photo taken from the northern topsoil stockpile. Photo illustrates Puncturevine seed heads on the bottom of the boot sole.