

BONANZA CREEK ENERGY

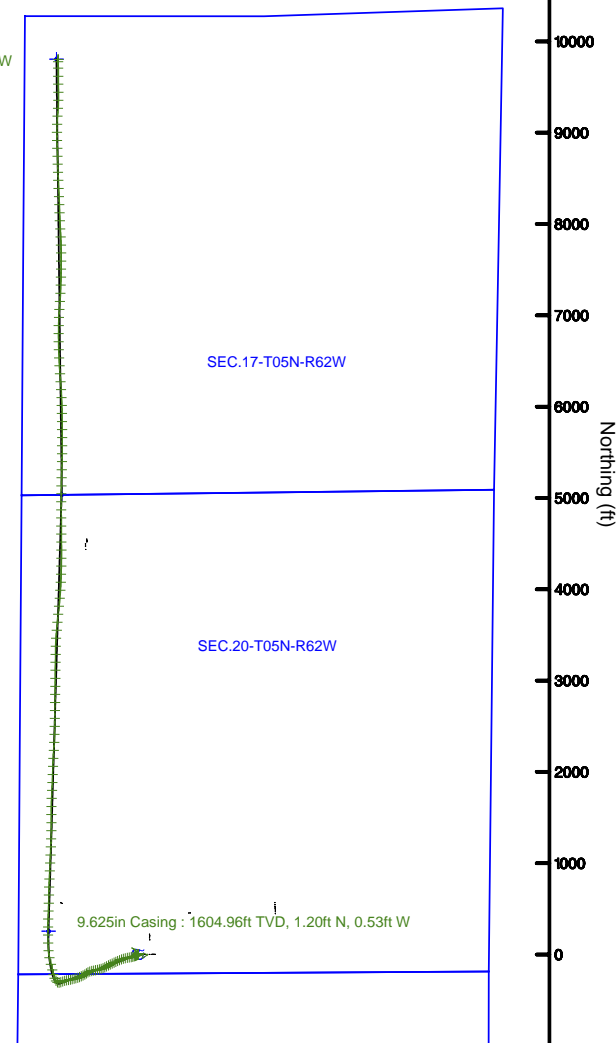
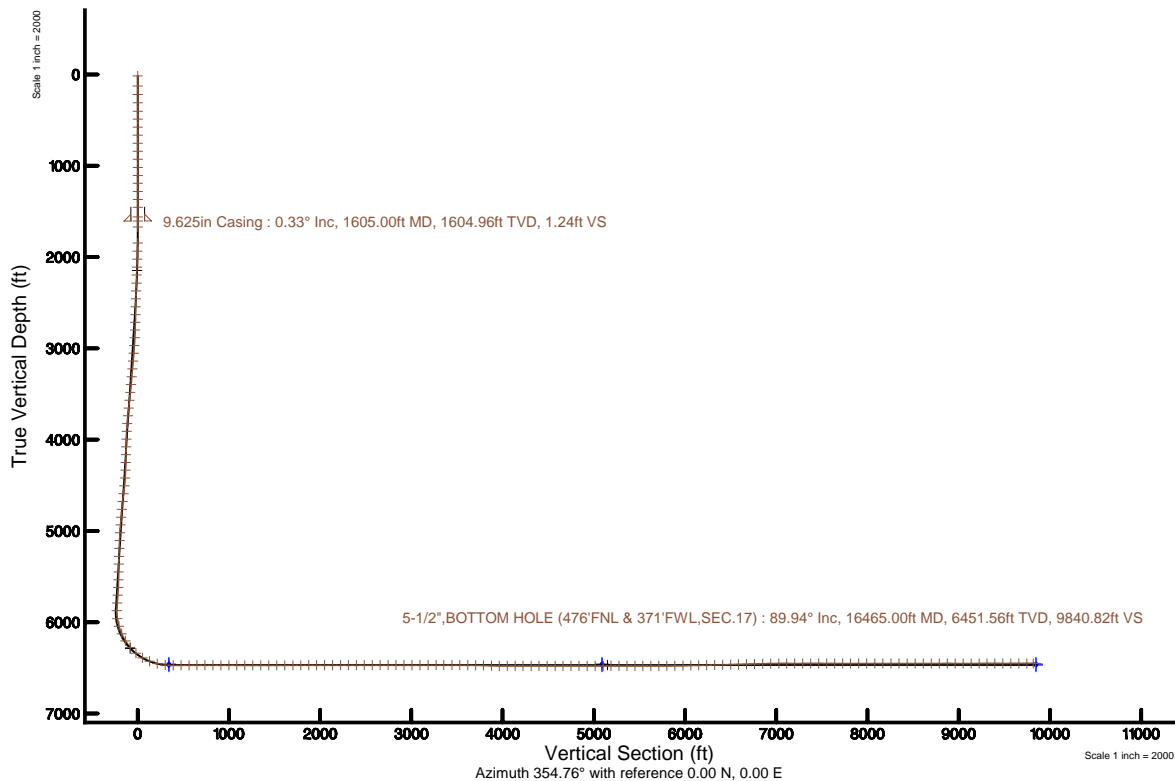
Location: COLORADO Slot: SLOT#06 ANTELOPE E14-20-17XRLNC (209'FSL & 1317'FWL,SEC.20)
Field: WELD COUNTY (NAD83/TRUE) Well: ANTELOPE E14-20-17XRLNC
Facility: SEC.20-T05N-R62W Wellbore: ANTELOPE E14-20-17XRLNC PWB

| | |
|---|--|
| Plot reference wellpath is ANTELOPE E14-20-17XRLNC (REV-C.0) PWP | Grid System: NAD83 / Lambert Colorado SP, Northern Zone (501), US feet |
| True vertical depths are referenced to AKITA 519 (4665'GL+17'KB@4682') (RKB) | North Reference: True north |
| Measured depths are referenced to AKITA 519 (4665'GL+17'KB@4682') (RKB) | Scale: True distance |
| AKITA 519 (4665'GL+17'KB@4682') (RKB) to Mean Sea Level: 4682 feet | Depths are in feet |
| Mean Sea Level to Ground level (At Slot: SLOT#06 ANTELOPE E14-20-17XRLNC (209'FSL & 1317'FWL,SEC.20)): 0 feet | Created by: bushjmh on 2019-04-17 |
| Coordinates are in feet referenced to Slot | Database: Denver |



Scale 1 inch = 2000
Easting (ft)
-2000 -1000 0 1000 2000 3000 4000
SLOT#06 ANTELOPE E14-20-17XRLNC (209'FSL & 1317'FWL,SEC.20)

5-1/2",BOTTOM HOLE (476'FNL & 371'FWL,SEC.17) : 6451.56ft TVD, 9801.30ft N, 881.18ft W





Actual Wellpath Report

ANTELOPE E14-20-17XRLNC AWP

Page 1 of 11



REFERENCE WELLPATH IDENTIFICATION

| | | | |
|----------|--------------------------|----------|---|
| Operator | BONANZA CREEK ENERGY | Slot | SLOT#06 ANTELOPE E14-20-17XRLNC (209'FSL & 1317'FWL,SEC.20) |
| Area | COLORADO | Well | ANTELOPE E14-20-17XRLNC |
| Field | WELD COUNTY (NAD83/TRUE) | Wellbore | ANTELOPE E14-20-17XRLNC AWP |
| Facility | SEC.20-T05N-R62W | | |

REPORT SETUP INFORMATION

| | | | |
|---------------------|---|----------------------|--|
| Projection System | NAD83 / Lambert Colorado SP, Northern Zone (501), US feet | Software System | WellArchitect® 5.1 |
| North Reference | True | User | Bushjamh |
| Scale | 0.999959 | Report Generated | 4/17/2019 at 9:44:00 PM |
| Convergence at slot | 0.74° East | Database/Source file | Denver/ANTELOPE_E14-20-17XRLNC_AWP.xml |

WELLPATH LOCATION

| | Local coordinates | | Grid coordinates | | Geographic coordinates | |
|-----------------------|-------------------|----------|------------------|-----------------|------------------------|-----------------|
| | North[ft] | East[ft] | Easting[US ft] | Northing[US ft] | Latitude | Longitude |
| Slot Location | -560.66 | 837.78 | 3319827.46 | 1382769.58 | 40°22'42.316"N | 104°21'07.139"W |
| Facility Reference Pt | | | 3318982.55 | 1383319.35 | 40°22'47.856"N | 104°21'17.964"W |
| Field Reference Pt | | | 3224525.77 | 1254425.87 | 40°01'44.400"N | 104°41'53.556"W |

WELLPATH DATUM

| | | | |
|--------------------------|---------------------------------------|---|-------------------|
| Calculation method | Minimum curvature | AKITA 519 (4665'GL+17'KB@4682') (RKB) to Facility Vertical Datum | 4682.00ft |
| Horizontal Reference Pt | Slot | AKITA 519 (4665'GL+17'KB@4682') (RKB) to Mean Sea Level | 4682.00ft |
| Vertical Reference Pt | AKITA 519 (4665'GL+17'KB@4682') (RKB) | AKITA 519 (4665'GL+17'KB@4682') (RKB) to Ground Level at Slot (SLOT#06 ANTELOPE E14-20-17XRLNC (209'FSL & 1317'FWL,SEC.20)) | 4682.00ft |
| MD Reference Pt | AKITA 519 (4665'GL+17'KB@4682') (RKB) | Section Origin | N 0.00, E 0.00 ft |
| Field Vertical Reference | Mean Sea Level | Section Azimuth | 354.76° |



Actual Wellpath Report

ANTELOPE E14-20-17XRLNC AWP

Page 2 of 11



| REFERENCE WELLPATH IDENTIFICATION | | | |
|-----------------------------------|--------------------------|----------|---|
| Operator | BONANZA CREEK ENERGY | Slot | SLOT#06 ANTELOPE E14-20-17XRLNC (209'FSL & 1317'FWL,SEC.20) |
| Area | COLORADO | Well | ANTELOPE E14-20-17XRLNC |
| Field | WELD COUNTY (NAD83/TRUE) | Wellbore | ANTELOPE E14-20-17XRLNC AWB |
| Facility | SEC.20-T05N-R62W | | |

| WELLPATH DATA (188 stations) † = interpolated/extrapolated station | | | | | | | | | | |
|--|--------------------|----------------|-------------|-------------------|---------------|--------------|----------------|-----------------|------------------|----------|
| MD [ft] | Inclination [°] | Azimuth [°] | TVD [ft] | Vert Sect [ft] | North [ft] | East [ft] | Latitude | Longitude | DLS [°/100ft] | Comments |
| 0.00† | 0.000 | 301.930 | 0.00 | 0.00 | 0.00 | 0.00 | 40°22'42.316"N | 104°21'07.139"W | 0.00 | |
| 17.00 | 0.000 | 301.930 | 17.00 | 0.00 | 0.00 | 0.00 | 40°22'42.316"N | 104°21'07.139"W | 0.00 | |
| 127.00 | 0.600 | 301.930 | 127.00 | 0.35 | 0.30 | -0.49 | 40°22'42.319"N | 104°21'07.145"W | 0.55 | |
| 219.00 | 0.810 | 280.830 | 218.99 | 0.82 | 0.68 | -1.54 | 40°22'42.322"N | 104°21'07.159"W | 0.36 | |
| 311.00 | 0.420 | 288.220 | 310.99 | 1.13 | 0.91 | -2.50 | 40°22'42.325"N | 104°21'07.171"W | 0.43 | |
| 403.00 | 0.590 | 274.670 | 402.98 | 1.35 | 1.05 | -3.29 | 40°22'42.326"N | 104°21'07.181"W | 0.22 | |
| 490.00 | 0.420 | 300.880 | 489.98 | 1.61 | 1.25 | -4.01 | 40°22'42.328"N | 104°21'07.191"W | 0.32 | |
| 577.00 | 0.510 | 239.170 | 576.98 | 1.63 | 1.22 | -4.61 | 40°22'42.328"N | 104°21'07.198"W | 0.56 | |
| 665.00 | 0.170 | 230.290 | 664.97 | 1.39 | 0.93 | -5.05 | 40°22'42.325"N | 104°21'07.204"W | 0.39 | |
| 754.00 | 0.220 | 123.820 | 753.97 | 1.21 | 0.75 | -5.01 | 40°22'42.323"N | 104°21'07.204"W | 0.35 | |
| 842.00 | 0.360 | 52.760 | 841.97 | 1.25 | 0.83 | -4.65 | 40°22'42.324"N | 104°21'07.199"W | 0.40 | |
| 930.00 | 0.340 | 43.840 | 929.97 | 1.57 | 1.18 | -4.25 | 40°22'42.327"N | 104°21'07.194"W | 0.07 | |
| 1018.00 | 0.410 | 84.870 | 1017.97 | 1.74 | 1.40 | -3.75 | 40°22'42.329"N | 104°21'07.187"W | 0.31 | |
| 1106.00 | 0.370 | 142.600 | 1105.97 | 1.50 | 1.20 | -3.27 | 40°22'42.327"N | 104°21'07.181"W | 0.43 | |
| 1192.00 | 0.480 | 97.110 | 1191.97 | 1.18 | 0.94 | -2.74 | 40°22'42.325"N | 104°21'07.174"W | 0.40 | |
| 1281.00 | 0.100 | 71.850 | 1280.96 | 1.12 | 0.92 | -2.30 | 40°22'42.325"N | 104°21'07.168"W | 0.44 | |
| 1369.00 | 0.590 | 89.100 | 1368.96 | 1.10 | 0.95 | -1.77 | 40°22'42.325"N | 104°21'07.162"W | 0.56 | |
| 1456.00 | 0.280 | 117.330 | 1455.96 | 0.96 | 0.86 | -1.14 | 40°22'42.324"N | 104°21'07.153"W | 0.42 | |
| 1561.00 | 0.360 | 39.360 | 1560.96 | 1.05 | 0.99 | -0.70 | 40°22'42.325"N | 104°21'07.148"W | 0.39 | |
| 1670.00 | 0.290 | 34.030 | 1669.96 | 1.51 | 1.49 | -0.33 | 40°22'42.330"N | 104°21'07.143"W | 0.07 | |
| 1846.00 | 1.670 | 230.080 | 1845.94 | 0.40 | 0.21 | -2.04 | 40°22'42.318"N | 104°21'07.165"W | 1.11 | |
| 1935.00 | 3.070 | 234.950 | 1934.86 | -1.53 | -1.99 | -4.99 | 40°22'42.296"N | 104°21'07.203"W | 1.59 | |
| 2023.00 | 4.240 | 239.210 | 2022.68 | -4.10 | -5.01 | -9.71 | 40°22'42.266"N | 104°21'07.264"W | 1.36 | |
| 2111.00 | 5.470 | 241.920 | 2110.36 | -7.13 | -8.65 | -16.21 | 40°22'42.230"N | 104°21'07.348"W | 1.42 | |
| 2198.00 | 6.570 | 245.360 | 2196.88 | -10.40 | -12.68 | -24.39 | 40°22'42.190"N | 104°21'07.454"W | 1.33 | |
| 2287.00 | 7.790 | 249.720 | 2285.18 | -13.65 | -16.89 | -34.68 | 40°22'42.149"N | 104°21'07.587"W | 1.50 | |
| 2375.00 | 9.160 | 253.270 | 2372.22 | -16.60 | -20.97 | -46.98 | 40°22'42.108"N | 104°21'07.746"W | 1.67 | |
| 2462.00 | 11.000 | 256.280 | 2457.87 | -19.20 | -24.94 | -61.68 | 40°22'42.069"N | 104°21'07.936"W | 2.20 | |
| 2551.00 | 13.030 | 259.710 | 2544.92 | -21.34 | -28.74 | -79.80 | 40°22'42.032"N | 104°21'08.170"W | 2.42 | |
| 2639.00 | 14.530 | 259.360 | 2630.38 | -23.25 | -32.55 | -100.41 | 40°22'41.994"N | 104°21'08.436"W | 1.71 | |



Actual Wellpath Report

ANTELOPE E14-20-17XRLNC AWP

Page 3 of 11



| REFERENCE WELLPATH IDENTIFICATION | | | |
|-----------------------------------|--------------------------|----------|---|
| Operator | BONANZA CREEK ENERGY | Slot | SLOT#06 ANTELOPE E14-20-17XRLNC (209'FSL & 1317'FWL,SEC.20) |
| Area | COLORADO | Well | ANTELOPE E14-20-17XRLNC |
| Field | WELD COUNTY (NAD83/TRUE) | Wellbore | ANTELOPE E14-20-17XRLNC AWB |
| Facility | SEC.20-T05N-R62W | | |

| WELLPATH DATA (188 stations) | | | | | | | | | | |
|------------------------------|--------------------|----------------|-------------|-------------------|---------------|--------------|----------------|-----------------|------------------|----------|
| MD [ft] | Inclination [°] | Azimuth [°] | TVD [ft] | Vert Sect [ft] | North [ft] | East [ft] | Latitude | Longitude | DLS [°/100ft] | Comments |
| 2726.00 | 14.650 | 257.980 | 2714.58 | -25.58 | -36.86 | -121.90 | 40°22'41.951"N | 104°21'08.714"W | 0.42 | |
| 2813.00 | 14.800 | 256.650 | 2798.72 | -28.44 | -41.72 | -143.47 | 40°22'41.903"N | 104°21'08.993"W | 0.43 | |
| 2901.00 | 14.880 | 254.140 | 2883.79 | -32.11 | -47.40 | -165.28 | 40°22'41.847"N | 104°21'09.274"W | 0.74 | |
| 2989.00 | 14.780 | 250.390 | 2968.86 | -36.98 | -54.25 | -186.72 | 40°22'41.779"N | 104°21'09.551"W | 1.10 | |
| 3077.00 | 14.870 | 246.660 | 3053.93 | -43.27 | -62.50 | -207.66 | 40°22'41.698"N | 104°21'09.822"W | 1.09 | |
| 3165.00 | 14.710 | 245.550 | 3139.01 | -50.46 | -71.59 | -228.20 | 40°22'41.608"N | 104°21'10.087"W | 0.37 | |
| 3254.00 | 14.240 | 244.180 | 3225.19 | -58.03 | -81.04 | -248.34 | 40°22'41.515"N | 104°21'10.348"W | 0.65 | |
| 3342.00 | 13.980 | 244.870 | 3310.53 | -65.45 | -90.27 | -267.71 | 40°22'41.424"N | 104°21'10.598"W | 0.35 | |
| 3431.00 | 14.770 | 246.610 | 3396.75 | -72.64 | -99.34 | -287.85 | 40°22'41.334"N | 104°21'10.858"W | 1.01 | |
| 3520.00 | 15.000 | 242.870 | 3482.76 | -80.47 | -109.09 | -308.51 | 40°22'41.238"N | 104°21'11.125"W | 1.11 | |
| 3608.00 | 14.960 | 241.370 | 3567.77 | -89.22 | -119.73 | -328.62 | 40°22'41.132"N | 104°21'11.385"W | 0.44 | |
| 3697.00 | 14.930 | 242.290 | 3653.76 | -98.17 | -130.56 | -348.85 | 40°22'41.025"N | 104°21'11.646"W | 0.27 | |
| 3785.00 | 14.760 | 243.990 | 3738.83 | -106.47 | -140.75 | -368.96 | 40°22'40.925"N | 104°21'11.906"W | 0.53 | |
| 3873.00 | 14.180 | 246.100 | 3824.03 | -113.90 | -150.03 | -388.89 | 40°22'40.833"N | 104°21'12.164"W | 0.89 | |
| 3959.00 | 13.920 | 251.820 | 3907.47 | -119.59 | -157.53 | -408.35 | 40°22'40.759"N | 104°21'12.415"W | 1.64 | |
| 4048.00 | 14.080 | 256.240 | 3993.82 | -123.59 | -163.44 | -429.04 | 40°22'40.700"N | 104°21'12.682"W | 1.21 | |
| 4135.00 | 13.920 | 259.960 | 4078.24 | -126.03 | -167.78 | -449.62 | 40°22'40.658"N | 104°21'12.948"W | 1.05 | |
| 4223.00 | 14.130 | 257.850 | 4163.62 | -128.21 | -171.89 | -470.55 | 40°22'40.617"N | 104°21'13.219"W | 0.63 | |
| 4312.00 | 14.010 | 257.350 | 4249.95 | -130.91 | -176.54 | -491.68 | 40°22'40.571"N | 104°21'13.492"W | 0.19 | |
| 4399.00 | 14.110 | 256.760 | 4334.34 | -133.74 | -181.27 | -512.28 | 40°22'40.524"N | 104°21'13.758"W | 0.20 | |
| 4488.00 | 14.100 | 250.800 | 4420.66 | -137.87 | -187.32 | -533.07 | 40°22'40.464"N | 104°21'14.027"W | 1.63 | |
| 4576.00 | 14.160 | 241.730 | 4506.01 | -144.67 | -195.95 | -552.68 | 40°22'40.379"N | 104°21'14.280"W | 2.51 | |
| 4664.00 | 14.190 | 234.290 | 4591.34 | -154.35 | -207.34 | -570.92 | 40°22'40.267"N | 104°21'14.516"W | 2.07 | |
| 4753.00 | 13.960 | 236.930 | 4677.67 | -164.89 | -219.57 | -588.77 | 40°22'40.146"N | 104°21'14.746"W | 0.77 | |
| 4841.00 | 13.770 | 244.620 | 4763.11 | -173.45 | -229.85 | -607.13 | 40°22'40.044"N | 104°21'14.984"W | 2.10 | |
| 4929.00 | 14.100 | 245.740 | 4848.52 | -180.55 | -238.74 | -626.37 | 40°22'39.956"N | 104°21'15.232"W | 0.48 | |
| 5017.00 | 13.970 | 246.140 | 4933.90 | -187.44 | -247.44 | -645.85 | 40°22'39.870"N | 104°21'15.484"W | 0.18 | |
| 5105.00 | 14.060 | 251.900 | 5019.28 | -193.21 | -255.06 | -665.73 | 40°22'39.795"N | 104°21'15.741"W | 1.59 | |
| 5193.00 | 13.620 | 255.200 | 5104.73 | -197.31 | -261.03 | -685.91 | 40°22'39.736"N | 104°21'16.001"W | 1.03 | |
| 5281.00 | 13.260 | 254.770 | 5190.32 | -200.78 | -266.33 | -705.66 | 40°22'39.684"N | 104°21'16.257"W | 0.42 | |



Actual Wellpath Report

ANTELOPE E14-20-17XRLNC AWP

Page 4 of 11



| REFERENCE WELLPATH IDENTIFICATION | | | |
|-----------------------------------|--------------------------|----------|---|
| Operator | BONANZA CREEK ENERGY | Slot | SLOT#06 ANTELOPE E14-20-17XRLNC (209'FSL & 1317'FWL,SEC.20) |
| Area | COLORADO | Well | ANTELOPE E14-20-17XRLNC |
| Field | WELD COUNTY (NAD83/TRUE) | Wellbore | ANTELOPE E14-20-17XRLNC AWB |
| Facility | SEC.20-T05N-R62W | | |

| WELLPATH DATA (188 stations) | | | | | | | | | | |
|------------------------------|--------------------|----------------|-------------|-------------------|---------------|--------------|----------------|-----------------|------------------|----------|
| MD [ft] | Inclination [°] | Azimuth [°] | TVD [ft] | Vert Sect [ft] | North [ft] | East [ft] | Latitude | Longitude | DLS [°/100ft] | Comments |
| 5371.00 | 13.880 | 256.360 | 5277.80 | -204.15 | -271.58 | -726.11 | 40°22'39.632"N | 104°21'16.521"W | 0.80 | |
| 5458.00 | 14.100 | 258.760 | 5362.22 | -206.78 | -276.11 | -746.65 | 40°22'39.587"N | 104°21'16.786"W | 0.71 | |
| 5547.00 | 13.840 | 259.870 | 5448.59 | -208.82 | -280.09 | -767.76 | 40°22'39.548"N | 104°21'17.059"W | 0.42 | |
| 5635.00 | 14.080 | 260.250 | 5533.99 | -210.56 | -283.76 | -788.67 | 40°22'39.511"N | 104°21'17.329"W | 0.29 | |
| 5722.00 | 14.570 | 254.380 | 5618.29 | -213.37 | -288.50 | -809.64 | 40°22'39.465"N | 104°21'17.600"W | 1.76 | |
| 5809.00 | 14.650 | 248.260 | 5702.48 | -218.47 | -295.52 | -830.40 | 40°22'39.395"N | 104°21'17.868"W | 1.78 | |
| 5897.00 | 13.700 | 247.070 | 5787.80 | -224.79 | -303.70 | -850.33 | 40°22'39.314"N | 104°21'18.126"W | 1.13 | |
| 5985.00 | 13.010 | 260.090 | 5873.44 | -228.77 | -309.47 | -869.69 | 40°22'39.257"N | 104°21'18.376"W | 3.50 | |
| 6074.00 | 12.980 | 304.850 | 5960.38 | -223.13 | -305.47 | -887.81 | 40°22'39.297"N | 104°21'18.610"W | 11.04 | |
| 6161.00 | 17.950 | 324.610 | 6044.26 | -205.23 | -288.94 | -903.61 | 40°22'39.460"N | 104°21'18.814"W | 8.25 | |
| 6250.00 | 25.340 | 336.220 | 6126.96 | -175.25 | -260.28 | -919.26 | 40°22'39.743"N | 104°21'19.017"W | 9.56 | |
| 6338.00 | 31.910 | 345.920 | 6204.21 | -134.35 | -220.42 | -932.54 | 40°22'40.137"N | 104°21'19.188"W | 9.12 | |
| 6427.00 | 40.730 | 347.530 | 6275.85 | -82.20 | -169.15 | -944.55 | 40°22'40.644"N | 104°21'19.344"W | 9.97 | |
| 6516.00 | 50.520 | 344.900 | 6338.02 | -19.40 | -107.48 | -959.81 | 40°22'41.253"N | 104°21'19.541"W | 11.20 | |
| 6605.00 | 59.790 | 349.450 | 6388.83 | 52.92 | -36.33 | -975.84 | 40°22'41.956"N | 104°21'19.748"W | 11.22 | |
| 6692.00 | 68.710 | 356.000 | 6426.62 | 131.10 | 41.28 | -985.58 | 40°22'42.723"N | 104°21'19.874"W | 12.29 | |
| 6780.00 | 76.230 | 358.870 | 6453.11 | 214.85 | 125.04 | -989.29 | 40°22'43.551"N | 104°21'19.922"W | 9.09 | |
| 6869.00 | 84.860 | 359.460 | 6467.72 | 302.29 | 212.74 | -990.56 | 40°22'44.418"N | 104°21'19.938"W | 9.72 | |
| 6957.00 | 90.060 | 0.090 | 6471.62 | 389.84 | 300.62 | -990.90 | 40°22'45.286"N | 104°21'19.943"W | 5.95 | |
| 7044.00 | 90.460 | 1.820 | 6471.23 | 476.33 | 387.61 | -989.45 | 40°22'46.146"N | 104°21'19.924"W | 2.04 | |
| 7132.00 | 90.340 | 2.910 | 6470.61 | 563.55 | 475.53 | -985.82 | 40°22'47.014"N | 104°21'19.877"W | 1.25 | |
| 7218.00 | 90.150 | 1.710 | 6470.24 | 648.80 | 561.46 | -982.35 | 40°22'47.864"N | 104°21'19.832"W | 1.41 | |
| 7307.00 | 89.910 | 0.350 | 6470.20 | 737.27 | 650.44 | -980.75 | 40°22'48.743"N | 104°21'19.812"W | 1.55 | |
| 7396.00 | 89.880 | 1.960 | 6470.36 | 825.71 | 739.42 | -978.96 | 40°22'49.622"N | 104°21'19.789"W | 1.81 | |
| 7484.00 | 89.820 | 2.750 | 6470.59 | 912.94 | 827.34 | -975.34 | 40°22'50.491"N | 104°21'19.742"W | 0.90 | |
| 7572.00 | 89.880 | 2.600 | 6470.82 | 1000.10 | 915.25 | -971.24 | 40°22'51.360"N | 104°21'19.689"W | 0.18 | |
| 7659.00 | 89.940 | 2.200 | 6470.96 | 1086.33 | 1002.17 | -967.59 | 40°22'52.219"N | 104°21'19.642"W | 0.46 | |
| 7747.00 | 89.850 | 2.800 | 6471.12 | 1173.53 | 1090.08 | -963.76 | 40°22'53.087"N | 104°21'19.592"W | 0.69 | |
| 7836.00 | 90.000 | 1.910 | 6471.23 | 1261.75 | 1179.01 | -960.10 | 40°22'53.966"N | 104°21'19.545"W | 1.01 | |
| 7924.00 | 90.000 | 1.930 | 6471.23 | 1349.06 | 1266.96 | -957.15 | 40°22'54.835"N | 104°21'19.507"W | 0.02 | |



Actual Wellpath Report

ANTELOPE E14-20-17XRLNC AWP

Page 5 of 11



| REFERENCE WELLPATH IDENTIFICATION | | | |
|-----------------------------------|--------------------------|----------|---|
| Operator | BONANZA CREEK ENERGY | Slot | SLOT#06 ANTELOPE E14-20-17XRLNC (209'FSL & 1317'FWL,SEC.20) |
| Area | COLORADO | Well | ANTELOPE E14-20-17XRLNC |
| Field | WELD COUNTY (NAD83/TRUE) | Wellbore | ANTELOPE E14-20-17XRLNC AWB |
| Facility | SEC.20-T05N-R62W | | |

| WELLPATH DATA (188 stations) | | | | | | | | | | |
|------------------------------|--------------------|----------------|-------------|-------------------|---------------|--------------|----------------|-----------------|------------------|----------|
| MD [ft] | Inclination [°] | Azimuth [°] | TVD [ft] | Vert Sect [ft] | North [ft] | East [ft] | Latitude | Longitude | DLS [°/100ft] | Comments |
| 8012.00 | 89.940 | 0.960 | 6471.28 | 1436.46 | 1354.93 | -954.93 | 40°22'55.704"N | 104°21'19.478"W | 1.10 | |
| 8101.00 | 90.150 | 0.030 | 6471.21 | 1525.01 | 1443.93 | -954.16 | 40°22'56.584"N | 104°21'19.468"W | 1.07 | |
| 8189.00 | 90.090 | 359.880 | 6471.03 | 1612.65 | 1531.93 | -954.23 | 40°22'57.453"N | 104°21'19.469"W | 0.18 | |
| 8278.00 | 90.090 | 0.570 | 6470.89 | 1701.25 | 1620.92 | -953.88 | 40°22'58.333"N | 104°21'19.465"W | 0.78 | |
| 8366.00 | 90.150 | 2.890 | 6470.70 | 1788.59 | 1708.88 | -951.23 | 40°22'59.202"N | 104°21'19.431"W | 2.64 | |
| 8454.00 | 90.120 | 2.810 | 6470.50 | 1875.72 | 1796.77 | -946.85 | 40°23'00.070"N | 104°21'19.374"W | 0.10 | |
| 8541.00 | 90.180 | 2.130 | 6470.27 | 1961.93 | 1883.69 | -943.10 | 40°23'00.929"N | 104°21'19.326"W | 0.78 | |
| 8629.00 | 90.120 | 2.330 | 6470.04 | 2049.18 | 1971.62 | -939.68 | 40°23'01.798"N | 104°21'19.282"W | 0.24 | |
| 8717.00 | 90.090 | 1.850 | 6469.88 | 2136.46 | 2059.56 | -936.47 | 40°23'02.667"N | 104°21'19.240"W | 0.55 | |
| 8805.00 | 90.150 | 3.090 | 6469.69 | 2223.67 | 2147.48 | -932.67 | 40°23'03.536"N | 104°21'19.191"W | 1.41 | |
| 8893.00 | 90.030 | 3.320 | 6469.55 | 2310.71 | 2235.34 | -927.76 | 40°23'04.404"N | 104°21'19.128"W | 0.29 | |
| 8981.00 | 90.000 | 2.500 | 6469.53 | 2397.82 | 2323.23 | -923.29 | 40°23'05.273"N | 104°21'19.070"W | 0.93 | |
| 9068.00 | 89.970 | 1.520 | 6469.55 | 2484.13 | 2410.17 | -920.24 | 40°23'06.132"N | 104°21'19.031"W | 1.13 | |
| 9156.00 | 90.000 | 1.270 | 6469.58 | 2571.54 | 2498.14 | -918.09 | 40°23'07.001"N | 104°21'19.003"W | 0.29 | |
| 9243.00 | 89.970 | 0.810 | 6469.60 | 2658.01 | 2585.13 | -916.51 | 40°23'07.861"N | 104°21'18.983"W | 0.53 | |
| 9330.00 | 90.030 | 0.690 | 6469.60 | 2744.54 | 2672.12 | -915.38 | 40°23'08.720"N | 104°21'18.968"W | 0.15 | |
| 9418.00 | 89.910 | 0.850 | 6469.64 | 2832.06 | 2760.11 | -914.19 | 40°23'09.590"N | 104°21'18.953"W | 0.23 | |
| 9506.00 | 90.000 | 0.750 | 6469.71 | 2919.57 | 2848.11 | -912.96 | 40°23'10.459"N | 104°21'18.937"W | 0.15 | |
| 9594.00 | 90.000 | 0.830 | 6469.71 | 3007.08 | 2936.10 | -911.75 | 40°23'11.329"N | 104°21'18.921"W | 0.09 | |
| 9682.00 | 90.000 | 0.620 | 6469.71 | 3094.60 | 3024.09 | -910.64 | 40°23'12.198"N | 104°21'18.907"W | 0.24 | |
| 9771.00 | 90.060 | 0.170 | 6469.67 | 3183.17 | 3113.09 | -910.02 | 40°23'13.078"N | 104°21'18.899"W | 0.51 | |
| 9859.00 | 89.970 | 1.350 | 6469.64 | 3270.69 | 3201.08 | -908.86 | 40°23'13.947"N | 104°21'18.884"W | 1.34 | |
| 9945.00 | 90.060 | 0.800 | 6469.62 | 3356.17 | 3287.06 | -907.24 | 40°23'14.797"N | 104°21'18.863"W | 0.65 | |
| 10034.00 | 90.000 | 0.240 | 6469.58 | 3444.72 | 3376.06 | -906.44 | 40°23'15.677"N | 104°21'18.853"W | 0.63 | |
| 10122.00 | 90.060 | 4.780 | 6469.53 | 3531.89 | 3463.95 | -902.58 | 40°23'16.545"N | 104°21'18.803"W | 5.16 | |
| 10210.00 | 89.350 | 4.670 | 6469.98 | 3618.56 | 3551.65 | -895.33 | 40°23'17.412"N | 104°21'18.709"W | 0.82 | |
| 10298.00 | 88.890 | 4.820 | 6471.33 | 3705.22 | 3639.34 | -888.06 | 40°23'18.278"N | 104°21'18.615"W | 0.55 | |
| 10385.00 | 88.710 | 5.710 | 6473.16 | 3790.74 | 3725.95 | -880.07 | 40°23'19.134"N | 104°21'18.512"W | 1.04 | |
| 10474.00 | 88.770 | 5.730 | 6475.11 | 3878.10 | 3814.49 | -871.21 | 40°23'20.009"N | 104°21'18.398"W | 0.07 | |
| 10562.00 | 89.140 | 5.030 | 6476.72 | 3964.58 | 3902.08 | -862.96 | 40°23'20.875"N | 104°21'18.291"W | 0.90 | |



Actual Wellpath Report

ANTELOPE E14-20-17XRLNC AWP

Page 6 of 11



| REFERENCE WELLPATH IDENTIFICATION | | | |
|-----------------------------------|--------------------------|----------|---|
| Operator | BONANZA CREEK ENERGY | Slot | SLOT#06 ANTELOPE E14-20-17XRLNC (209'FSL & 1317'FWL,SEC.20) |
| Area | COLORADO | Well | ANTELOPE E14-20-17XRLNC |
| Field | WELD COUNTY (NAD83/TRUE) | Wellbore | ANTELOPE E14-20-17XRLNC AWB |
| Facility | SEC.20-T05N-R62W | | |

| WELLPATH DATA (188 stations) | | | | | | | | | | |
|------------------------------|--------------------|----------------|-------------|-------------------|---------------|--------------|----------------|-----------------|------------------|----------|
| MD [ft] | Inclination [°] | Azimuth [°] | TVD [ft] | Vert Sect [ft] | North [ft] | East [ft] | Latitude | Longitude | DLS [°/100ft] | Comments |
| 10650.00 | 89.970 | 3.790 | 6477.40 | 4051.33 | 3989.82 | -856.19 | 40°23'21.741"N | 104°21'18.204"W | 1.70 | |
| 10738.00 | 90.060 | 2.480 | 6477.38 | 4138.39 | 4077.69 | -851.38 | 40°23'22.610"N | 104°21'18.141"W | 1.49 | |
| 10825.00 | 90.060 | 1.760 | 6477.29 | 4224.67 | 4164.63 | -848.16 | 40°23'23.469"N | 104°21'18.100"W | 0.83 | |
| 10914.00 | 90.060 | 0.950 | 6477.19 | 4313.08 | 4253.60 | -846.06 | 40°23'24.348"N | 104°21'18.073"W | 0.91 | |
| 11001.00 | 89.780 | 0.850 | 6477.32 | 4399.58 | 4340.59 | -844.69 | 40°23'25.208"N | 104°21'18.055"W | 0.34 | |
| 11090.00 | 89.850 | 359.530 | 6477.60 | 4488.18 | 4429.59 | -844.39 | 40°23'26.087"N | 104°21'18.051"W | 1.49 | |
| 11178.00 | 90.030 | 359.440 | 6477.69 | 4575.88 | 4517.58 | -845.18 | 40°23'26.957"N | 104°21'18.062"W | 0.23 | |
| 11265.00 | 90.060 | 359.600 | 6477.63 | 4662.58 | 4604.58 | -845.91 | 40°23'27.816"N | 104°21'18.071"W | 0.19 | |
| 11353.00 | 90.060 | 359.770 | 6477.53 | 4750.26 | 4692.58 | -846.40 | 40°23'28.686"N | 104°21'18.077"W | 0.19 | |
| 11441.00 | 90.030 | 359.860 | 6477.47 | 4837.91 | 4780.58 | -846.68 | 40°23'29.555"N | 104°21'18.081"W | 0.11 | |
| 11530.00 | 90.000 | 0.020 | 6477.44 | 4926.55 | 4869.58 | -846.77 | 40°23'30.435"N | 104°21'18.082"W | 0.18 | |
| 11618.00 | 90.060 | 0.480 | 6477.40 | 5014.15 | 4957.58 | -846.39 | 40°23'31.305"N | 104°21'18.077"W | 0.53 | |
| 11706.00 | 89.970 | 0.980 | 6477.37 | 5101.67 | 5045.57 | -845.27 | 40°23'32.174"N | 104°21'18.063"W | 0.58 | |
| 11793.00 | 90.060 | 0.800 | 6477.35 | 5188.17 | 5132.56 | -843.92 | 40°23'33.034"N | 104°21'18.046"W | 0.23 | |
| 11881.00 | 90.000 | 1.230 | 6477.30 | 5275.65 | 5220.54 | -842.36 | 40°23'33.903"N | 104°21'18.025"W | 0.49 | |
| 11969.00 | 90.030 | 1.320 | 6477.28 | 5363.08 | 5308.52 | -840.40 | 40°23'34.772"N | 104°21'18.000"W | 0.11 | |
| 12058.00 | 89.940 | 1.300 | 6477.30 | 5451.50 | 5397.50 | -838.37 | 40°23'35.652"N | 104°21'17.974"W | 0.10 | |
| 12145.00 | 89.940 | 0.210 | 6477.40 | 5538.02 | 5484.49 | -837.22 | 40°23'36.511"N | 104°21'17.959"W | 1.25 | |
| 12233.00 | 89.850 | 0.260 | 6477.56 | 5625.62 | 5572.49 | -836.86 | 40°23'37.381"N | 104°21'17.954"W | 0.12 | |
| 12321.00 | 90.370 | 0.150 | 6477.39 | 5713.22 | 5660.49 | -836.54 | 40°23'38.250"N | 104°21'17.950"W | 0.60 | |
| 12409.00 | 90.520 | 359.470 | 6476.70 | 5800.88 | 5748.48 | -836.84 | 40°23'39.120"N | 104°21'17.954"W | 0.79 | |
| 12497.00 | 90.550 | 359.360 | 6475.88 | 5888.59 | 5836.48 | -837.73 | 40°23'39.990"N | 104°21'17.966"W | 0.13 | |
| 12586.00 | 91.050 | 359.340 | 6474.64 | 5977.29 | 5925.46 | -838.74 | 40°23'40.869"N | 104°21'17.979"W | 0.56 | |
| 12673.00 | 91.050 | 358.590 | 6473.05 | 6064.04 | 6012.43 | -840.32 | 40°23'41.728"N | 104°21'17.999"W | 0.86 | |
| 12759.00 | 91.080 | 357.350 | 6471.45 | 6149.89 | 6098.36 | -843.36 | 40°23'42.577"N | 104°21'18.039"W | 1.44 | |
| 12847.00 | 91.080 | 356.460 | 6469.79 | 6237.81 | 6186.22 | -848.11 | 40°23'43.446"N | 104°21'18.100"W | 1.01 | |
| 12934.00 | 91.390 | 356.180 | 6467.91 | 6324.76 | 6273.02 | -853.69 | 40°23'44.303"N | 104°21'18.172"W | 0.48 | |
| 13021.00 | 91.450 | 356.120 | 6465.76 | 6411.71 | 6359.79 | -859.53 | 40°23'45.161"N | 104°21'18.248"W | 0.10 | |
| 13109.00 | 91.380 | 356.670 | 6463.58 | 6499.65 | 6447.59 | -865.07 | 40°23'46.028"N | 104°21'18.319"W | 0.63 | |
| 13196.00 | 91.350 | 357.540 | 6461.51 | 6586.55 | 6534.46 | -869.46 | 40°23'46.887"N | 104°21'18.376"W | 1.00 | |



Actual Wellpath Report

ANTELOPE E14-20-17XRLNC AWP

Page 7 of 11



| REFERENCE WELLPATH IDENTIFICATION | | | |
|-----------------------------------|--------------------------|----------|---|
| Operator | BONANZA CREEK ENERGY | Slot | SLOT#06 ANTELOPE E14-20-17XRLNC (209'FSL & 1317'FWL,SEC.20) |
| Area | COLORADO | Well | ANTELOPE E14-20-17XRLNC |
| Field | WELD COUNTY (NAD83/TRUE) | Wellbore | ANTELOPE E14-20-17XRLNC AWB |
| Facility | SEC.20-T05N-R62W | | |

| WELLPATH DATA (188 stations) | | | | | | | | | | |
|------------------------------|--------------------|----------------|-------------|-------------------|---------------|--------------|----------------|-----------------|------------------|----------|
| MD [ft] | Inclination [°] | Azimuth [°] | TVD [ft] | Vert Sect [ft] | North [ft] | East [ft] | Latitude | Longitude | DLS [°/100ft] | Comments |
| 13284.00 | 91.450 | 358.390 | 6459.36 | 6674.38 | 6622.37 | -872.58 | 40°23'47.755"N | 104°21'18.417"W | 0.97 | |
| 13372.00 | 91.480 | 359.230 | 6457.11 | 6762.13 | 6710.32 | -874.41 | 40°23'48.625"N | 104°21'18.440"W | 0.95 | |
| 13461.00 | 91.570 | 0.290 | 6454.74 | 6850.76 | 6799.29 | -874.78 | 40°23'49.504"N | 104°21'18.445"W | 1.19 | |
| 13550.00 | 90.920 | 1.100 | 6452.81 | 6939.26 | 6888.26 | -873.70 | 40°23'50.383"N | 104°21'18.431"W | 1.17 | |
| 13639.00 | 90.370 | 1.870 | 6451.81 | 7027.64 | 6977.23 | -871.40 | 40°23'51.262"N | 104°21'18.402"W | 1.06 | |
| 13727.00 | 89.820 | 4.040 | 6451.66 | 7114.74 | 7065.10 | -866.86 | 40°23'52.130"N | 104°21'18.343"W | 2.54 | |
| 13815.00 | 90.030 | 3.870 | 6451.78 | 7201.61 | 7152.89 | -860.79 | 40°23'52.998"N | 104°21'18.265"W | 0.31 | |
| 13904.00 | 90.030 | 2.690 | 6451.73 | 7289.63 | 7241.75 | -855.70 | 40°23'53.876"N | 104°21'18.199"W | 1.33 | |
| 13993.00 | 90.060 | 1.940 | 6451.66 | 7377.85 | 7330.67 | -852.10 | 40°23'54.755"N | 104°21'18.152"W | 0.84 | |
| 14081.00 | 89.910 | 1.290 | 6451.68 | 7465.22 | 7418.64 | -849.62 | 40°23'55.624"N | 104°21'18.120"W | 0.76 | |
| 14169.00 | 90.030 | 0.610 | 6451.73 | 7552.71 | 7506.62 | -848.16 | 40°23'56.493"N | 104°21'18.101"W | 0.78 | |
| 14257.00 | 89.970 | 359.860 | 6451.73 | 7640.31 | 7594.62 | -847.80 | 40°23'57.363"N | 104°21'18.097"W | 0.85 | |
| 14345.00 | 89.970 | 359.900 | 6451.78 | 7727.96 | 7682.62 | -847.99 | 40°23'58.232"N | 104°21'18.099"W | 0.05 | |
| 14432.00 | 89.910 | 358.380 | 6451.87 | 7814.70 | 7769.61 | -849.29 | 40°23'59.092"N | 104°21'18.116"W | 1.75 | |
| 14520.00 | 89.970 | 357.010 | 6451.96 | 7902.58 | 7857.54 | -852.83 | 40°23'59.961"N | 104°21'18.162"W | 1.56 | |
| 14609.00 | 90.030 | 357.310 | 6451.96 | 7991.51 | 7946.43 | -857.24 | 40°24'00.839"N | 104°21'18.219"W | 0.34 | |
| 14698.00 | 90.030 | 357.500 | 6451.91 | 8080.41 | 8035.34 | -861.27 | 40°24'01.718"N | 104°21'18.271"W | 0.21 | |
| 14786.00 | 90.000 | 357.900 | 6451.89 | 8168.30 | 8123.27 | -864.80 | 40°24'02.587"N | 104°21'18.317"W | 0.46 | |
| 14875.00 | 90.000 | 357.900 | 6451.89 | 8257.16 | 8212.21 | -868.06 | 40°24'03.466"N | 104°21'18.359"W | 0.00 | |
| 14963.00 | 89.970 | 357.740 | 6451.91 | 8345.04 | 8300.14 | -871.41 | 40°24'04.335"N | 104°21'18.402"W | 0.18 | |
| 15052.00 | 90.000 | 357.300 | 6451.94 | 8433.93 | 8389.06 | -875.26 | 40°24'05.213"N | 104°21'18.452"W | 0.50 | |
| 15141.00 | 90.060 | 357.990 | 6451.89 | 8522.82 | 8477.98 | -878.92 | 40°24'06.092"N | 104°21'18.499"W | 0.78 | |
| 15230.00 | 89.940 | 357.930 | 6451.89 | 8611.68 | 8566.93 | -882.09 | 40°24'06.971"N | 104°21'18.540"W | 0.15 | |
| 15318.00 | 90.060 | 358.170 | 6451.89 | 8699.54 | 8654.88 | -885.08 | 40°24'07.840"N | 104°21'18.579"W | 0.30 | |
| 15405.00 | 90.090 | 359.260 | 6451.77 | 8786.33 | 8741.85 | -887.03 | 40°24'08.699"N | 104°21'18.604"W | 1.25 | |
| 15493.00 | 90.000 | 357.290 | 6451.71 | 8874.16 | 8829.81 | -889.68 | 40°24'09.568"N | 104°21'18.639"W | 2.24 | |
| 15579.00 | 89.940 | 358.670 | 6451.75 | 8960.02 | 8915.75 | -892.71 | 40°24'10.418"N | 104°21'18.678"W | 1.61 | |
| 15668.00 | 90.060 | 0.480 | 6451.75 | 9048.70 | 9004.75 | -893.37 | 40°24'11.297"N | 104°21'18.687"W | 2.04 | |
| 15756.00 | 89.940 | 1.590 | 6451.75 | 9136.17 | 9092.73 | -891.78 | 40°24'12.167"N | 104°21'18.666"W | 1.27 | |
| 15844.00 | 90.090 | 4.210 | 6451.73 | 9223.28 | 9180.61 | -887.33 | 40°24'13.035"N | 104°21'18.609"W | 2.98 | |



Actual Wellpath Report

ANTELOPE E14-20-17XRLNC AWP

Page 8 of 11



| REFERENCE WELLPATH IDENTIFICATION | | | |
|-----------------------------------|--------------------------|----------|---|
| Operator | BONANZA CREEK ENERGY | Slot | SLOT#06 ANTELOPE E14-20-17XRLNC (209'FSL & 1317'FWL,SEC.20) |
| Area | COLORADO | Well | ANTELOPE E14-20-17XRLNC |
| Field | WELD COUNTY (NAD83/TRUE) | Wellbore | ANTELOPE E14-20-17XRLNC AWB |
| Facility | SEC.20-T05N-R62W | | |

| WELLPATH DATA (188 stations) | | | | | | | | | | |
|------------------------------|--------------------|----------------|-------------|-------------------|---------------|--------------|----------------|-----------------|------------------|---|
| MD [ft] | Inclination [°] | Azimuth [°] | TVD [ft] | Vert Sect [ft] | North [ft] | East [ft] | Latitude | Longitude | DLS [°/100ft] | Comments |
| 15931.00 | 90.000 | 3.670 | 6451.66 | 9309.17 | 9267.40 | -881.35 | 40°24'13.893"N | 104°21'18.531"W | 0.63 | |
| 16019.00 | 89.970 | 0.880 | 6451.68 | 9396.40 | 9355.33 | -877.86 | 40°24'14.761"N | 104°21'18.486"W | 3.17 | |
| 16107.00 | 89.970 | 359.200 | 6451.73 | 9484.03 | 9443.32 | -877.80 | 40°24'15.631"N | 104°21'18.485"W | 1.91 | |
| 16195.00 | 90.060 | 359.520 | 6451.71 | 9571.74 | 9531.32 | -878.78 | 40°24'16.501"N | 104°21'18.498"W | 0.38 | |
| 16282.00 | 90.000 | 359.800 | 6451.66 | 9658.42 | 9618.32 | -879.30 | 40°24'17.360"N | 104°21'18.505"W | 0.33 | |
| 16371.00 | 90.120 | 359.500 | 6451.57 | 9747.10 | 9707.31 | -879.84 | 40°24'18.240"N | 104°21'18.512"W | 0.36 | |
| 16440.00 | 89.940 | 359.000 | 6451.53 | 9815.89 | 9776.31 | -880.75 | 40°24'18.921"N | 104°21'18.524"W | 0.77 | |
| 16465.00 | 89.940 | 359.000 | 6451.56 | 9840.82 | 9801.30 | -881.18 | 40°24'19.168"N | 104°21'18.529"W | 0.00 | 5-1/2",BOTTOM HOLE (476'FNL & 371'FWL,SEC.17) |

| HOLE & CASING SECTIONS - Ref Wellbore: ANTELOPE E14-20-17XRLNC AWB Ref Wellpath: ANTELOPE E14-20-17XRLNC AWP | | | | | | | | | |
|---|---------------|-------------|---------------|----------------|--------------|----------------|----------------|--------------|--------------|
| String/Diameter | Start MD [ft] | End MD [ft] | Interval [ft] | Start TVD [ft] | End TVD [ft] | Start N/S [ft] | Start E/W [ft] | End N/S [ft] | End E/W [ft] |
| 9.625in Casing | 17.00 | 1605.00 | 1588.00 | 17.00 | 1604.96 | 0.00 | 0.00 | 1.20 | -0.53 |



Actual Wellpath Report

ANTELOPE E14-20-17XRLNC AWP

Page 9 of 11



| REFERENCE WELLPATH IDENTIFICATION | | | |
|-----------------------------------|--------------------------|----------|---|
| Operator | BONANZA CREEK ENERGY | Slot | SLOT#06 ANTELOPE E14-20-17XRLNC (209'FSL & 1317'FWL,SEC.20) |
| Area | COLORADO | Well | ANTELOPE E14-20-17XRLNC |
| Field | WELD COUNTY (NAD83/TRUE) | Wellbore | ANTELOPE E14-20-17XRLNC AWB |
| Facility | SEC.20-T05N-R62W | | |

| TARGETS | | | | | | | | |
|---|-------------|---------------|--------------|----------------------|-----------------------|----------------|-----------------|---------|
| Name | TVD [ft] | North [ft] | East [ft] | Grid East [US ft] | Grid North [US ft] | Latitude | Longitude | Shape |
| ANTELOPE E14-20-17XRLNC BHL PLAT (470'FNL & 350'FWL,SEC.17) | 6457.00 | 9805.47 | -897.61 | 3318803.03 | 1392562.19 | 40°24'19.210"N | 104°21'18.742"W | point |
| ANTELOPE E14-20-17XRLNC LP PLAT (470'FSL & 330'FWL,SEC.20) | 6457.00 | 254.67 | -984.60 | 3318839.69 | 1383011.47 | 40°22'44.832"N | 104°21'19.861"W | point |
| ANTELOPE E14-20-17XRLNC MLT (0'FNL & 440'FWL,SEC.20) | 6457.00 | 5034.43 | -841.25 | 3318921.15 | 1387792.48 | 40°23'32.064"N | 104°21'18.011"W | point |
| ANTELOPE E14-20-17XRLNC BHL REV-1 (470'FNL & 350'FWL,SEC.17) | 6468.00 | 9805.51 | -897.64 | 3318803.00 | 1392562.23 | 40°24'19.210"N | 104°21'18.742"W | point |
| ANTELOPE E14-20-17XRLNC LP REV-1 (470'FSL & 330'FWL,SEC.20) | 6468.00 | 254.67 | -984.59 | 3318839.70 | 1383011.47 | 40°22'44.832"N | 104°21'19.861"W | point |
| ANTELOPE E14-20-17XRLNC MLT REV-1 (0'FNL & 440'FWL,SEC.20) | 6468.00 | 5034.43 | -841.25 | 3318921.15 | 1387792.48 | 40°23'32.064"N | 104°21'18.011"W | point |
| SEC.17,20-T05N-R62W (460FNL,FSL) | 10681.00 | 7696.44 | 1341.65 | 3321069.31 | 1390482.42 | 40°23'58.369"N | 104°20'49.798"W | polygon |
| SEC.29,32-T05N-R62W (460FNL,FSL) | 10681.00 | -2824.75 | 1254.30 | 3321118.17 | 1379961.42 | 40°22'14.402"N | 104°20'50.933"W | polygon |
| SEC.17-T05N-R62W | 10682.00 | 7696.44 | 1341.65 | 3321069.31 | 1390482.42 | 40°23'58.369"N | 104°20'49.798"W | polygon |
| SEC.20-T05N-R62W | 10682.00 | 7696.44 | 1341.65 | 3321069.31 | 1390482.42 | 40°23'58.369"N | 104°20'49.798"W | polygon |
| SEC.29-T05N-R62W | 10682.00 | -2824.75 | 1254.30 | 3321118.17 | 1379961.42 | 40°22'14.402"N | 104°20'50.933"W | polygon |
| SEC.32-T05N-R62W | 10682.00 | -2824.75 | 1254.30 | 3321118.17 | 1379961.42 | 40°22'14.402"N | 104°20'50.933"W | polygon |



Actual Wellpath Report

ANTELOPE E14-20-17XRLNC AWP

Page 10 of 11



| REFERENCE WELLPATH IDENTIFICATION | | | |
|-----------------------------------|--------------------------|----------|---|
| Operator | BONANZA CREEK ENERGY | Slot | SLOT#06 ANTELOPE E14-20-17XRLNC (209'FSL & 1317'FWL,SEC.20) |
| Area | COLORADO | Well | ANTELOPE E14-20-17XRLNC |
| Field | WELD COUNTY (NAD83/TRUE) | Wellbore | ANTELOPE E14-20-17XRLNC AWB |
| Facility | SEC.20-T05N-R62W | | |

| WELLPATH COMPOSITION - Ref Wellbore: ANTELOPE E14-20-17XRLNC AWB Ref Wellpath: ANTELOPE E14-20-17XRLNC AWP | | | | |
|---|-------------|------------------------------------|---|-----------------------------|
| Start MD [ft] | End MD [ft] | Positional Uncertainty Model | Log Name/Comment | Wellbore |
| 17.00 | 1561.00 | BHI NaviTrak (Rotating+Axial Corr) | BHI NAVITRAK (ROTATING+AXIAL CORR) <127-1561> | ANTELOPE E14-20-17XRLNC AWB |
| 1561.00 | 16440.00 | BHI AutoTrak Curve (Short) | BHI AUTOTRAK CURVE (SHORT) <1670-16465> | ANTELOPE E14-20-17XRLNC AWB |
| 16440.00 | 16465.00 | Blind Drilling (std) | Projection to bit | ANTELOPE E14-20-17XRLNC AWB |



Actual Wellpath Report

ANTELOPE E14-20-17XRLNC AWP

Page 11 of 11



| REFERENCE WELLPATH IDENTIFICATION | | | |
|-----------------------------------|--------------------------|----------|---|
| Operator | BONANZA CREEK ENERGY | Slot | SLOT#06 ANTELOPE E14-20-17XRLNC (209'FSL & 1317'FWL,SEC.20) |
| Area | COLORADO | Well | ANTELOPE E14-20-17XRLNC |
| Field | WELD COUNTY (NAD83/TRUE) | Wellbore | ANTELOPE E14-20-17XRLNC AWB |
| Facility | SEC.20-T05N-R62W | | |

| WELLPATH COMMENTS | | | | |
|-------------------|--------------------|----------------|-------------|---|
| MD [ft] | Inclination [°] | Azimuth [°] | TVD [ft] | Comment |
| 16465.00 | 89.940 | 359.000 | 6451.56 | 5-1/2",BOTTOM HOLE (476'FNL & 371'FWL,SEC.17) |