



99999999

Order No. 112-134

FOUR STAR OIL & GAS

SOUTHERN UTE #19

Cause 112

Docket 5-5

Exhibits



**FOUR
STAR**

OIL & GAS COMPANY

A Subsidiary of Texaco Inc.



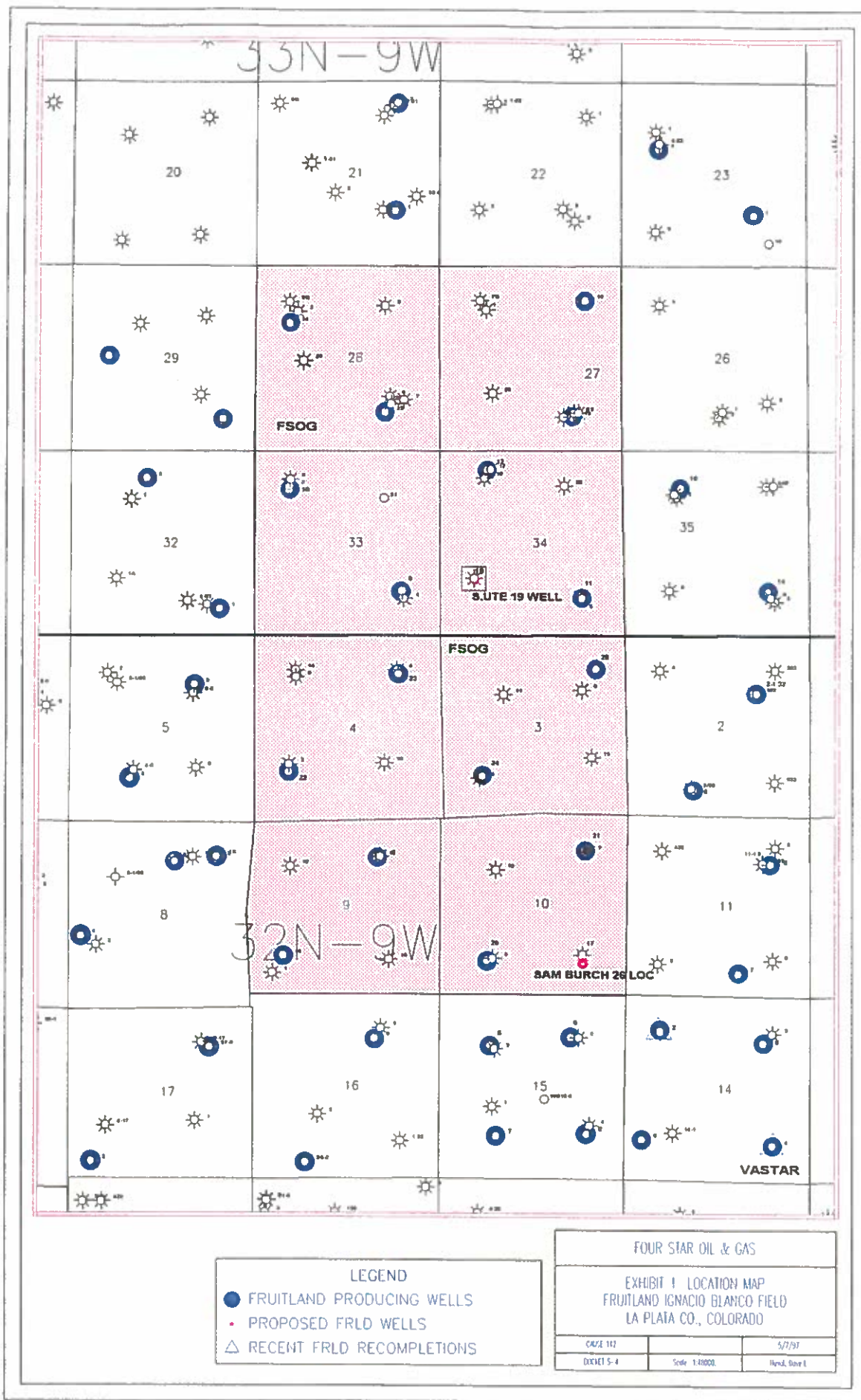
00780167

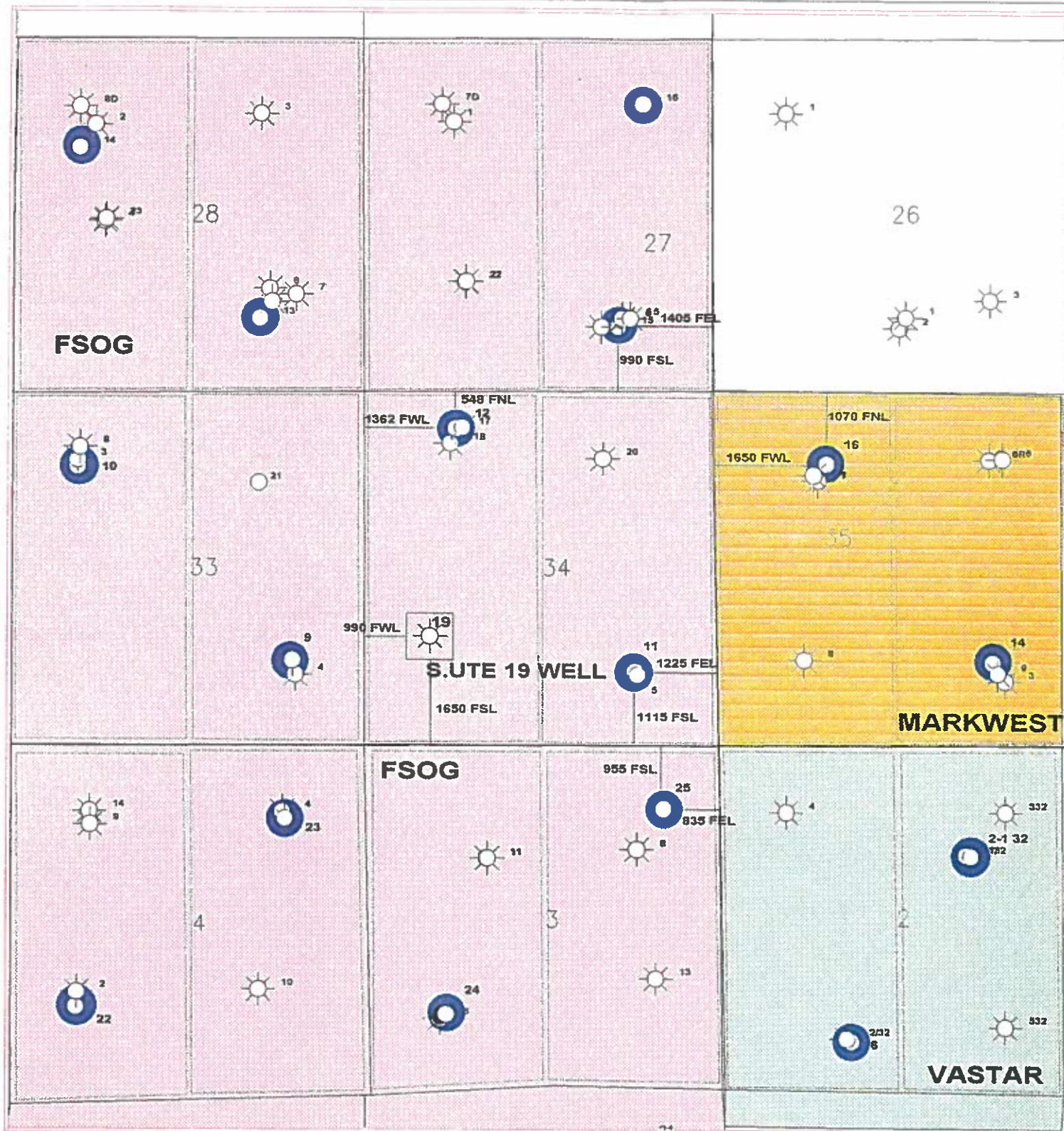
**SOUTHERN UTE #19
FOUR STAR OIL AND GAS COMPANY**

**CAUSE 112
DOCKET 5-5
MAY 19-20, 1997**

LIST OF EXHIBITS

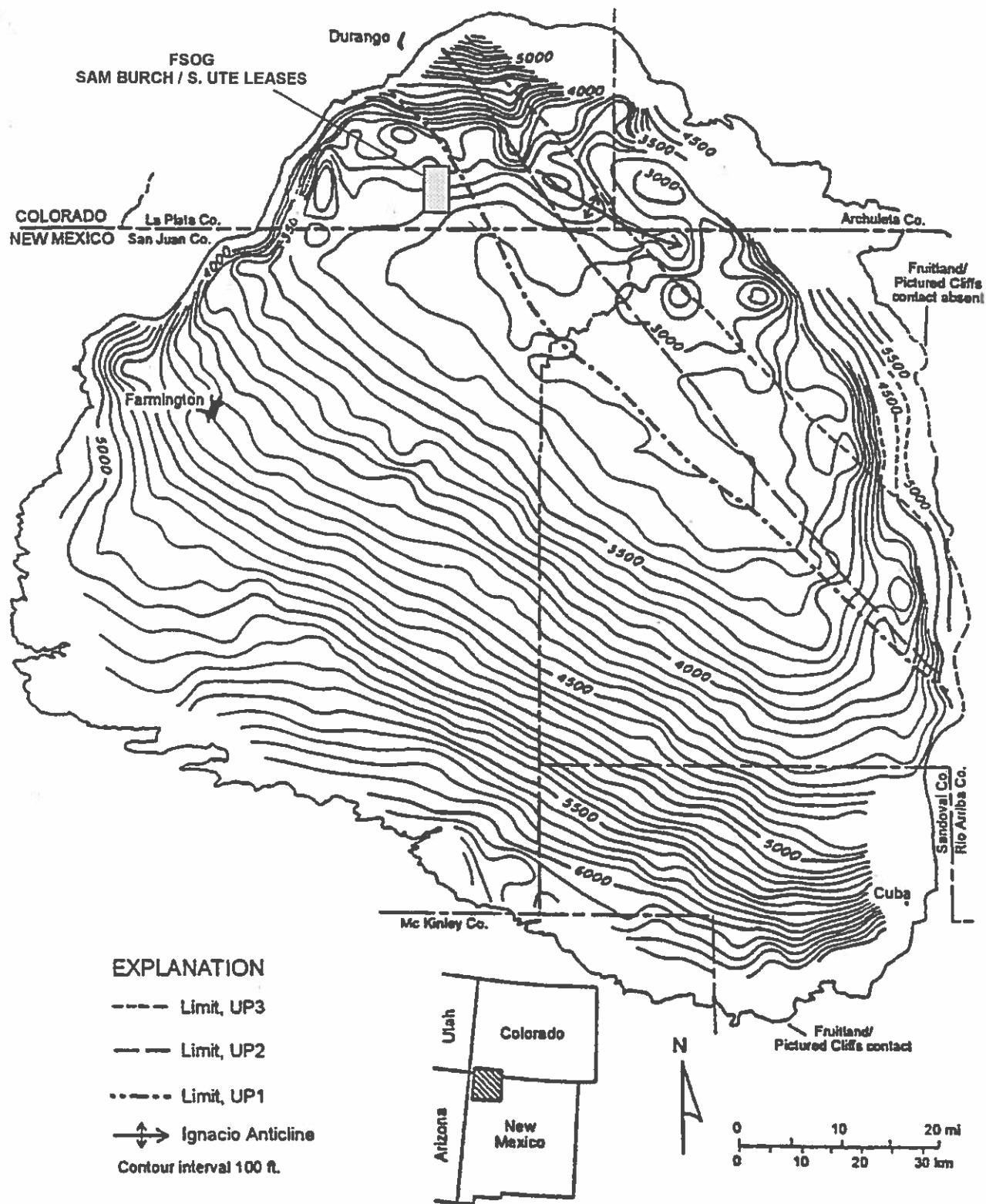
1. Location Map
2. Land Map
3. Regional Structure Map
4. Local Structure Map
5. Cross Section AB - AB'
6. Cross Section AC - AC'
7. Coal Thickness
8. Regional Bubble Map of Cumulative Gas Production
9. Bubble Map of Cumulative Gas Production
10. Bubble Map of Cumulative Water Production
11. Bubble Map of Daily Gas Production
12. Bubble Map of Daily Water Production
13. Pressure Tests
14. Recovery Estimates
15. Existing Wellbore Diagram
16. Proposed Wellbore Diagram
17. Economic Summary Table



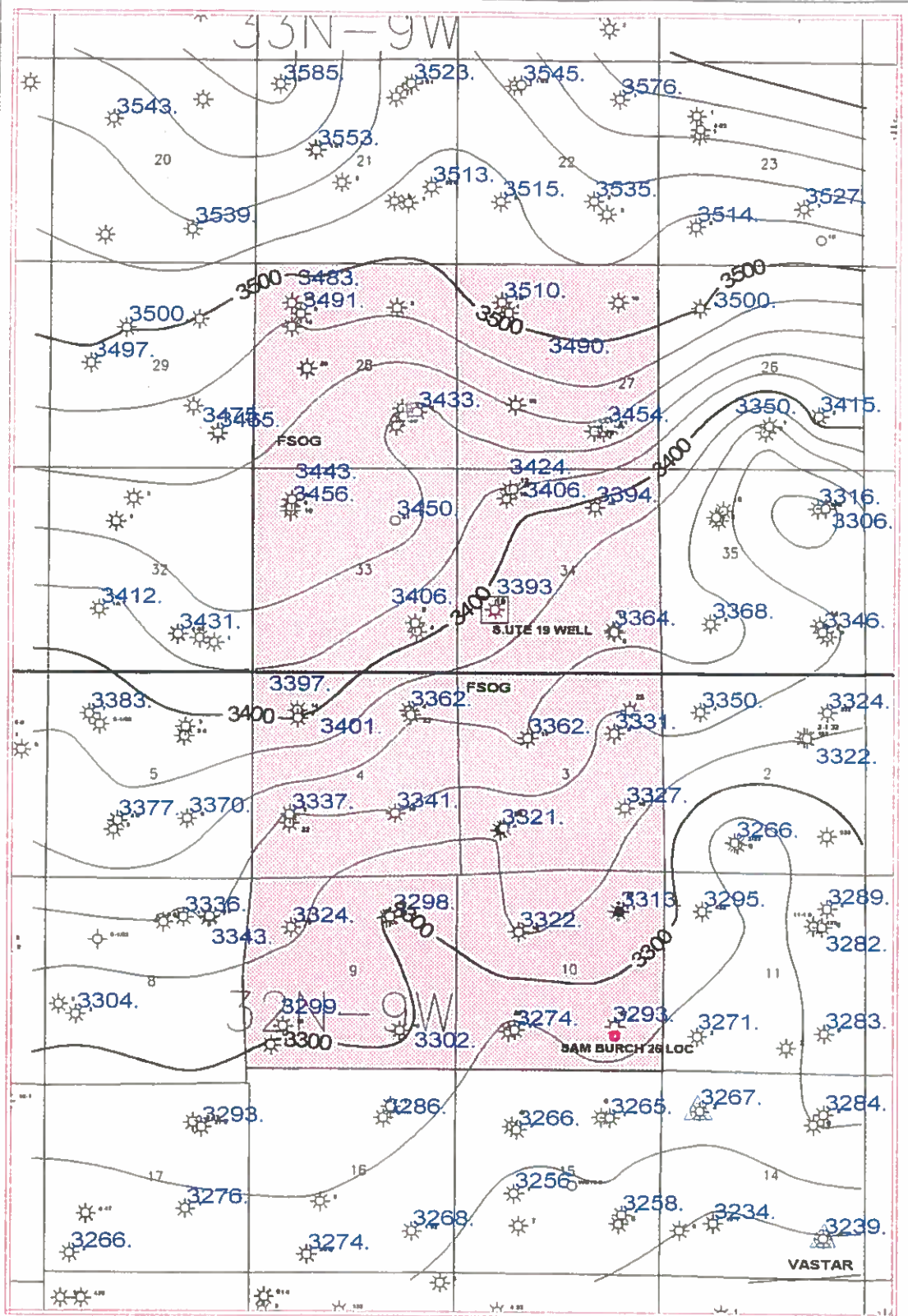


LEGEND	
	FRID COAL PROD WELLS
	SPACING UNIT
	FOUR STAR LEASES
	MARKWEST OPERATED LEASES
	VASTAR OPERATED LEASES

FOUR STAR OIL & GAS		
EXHIBIT 2 LAND MAP		
FRUITLAND IGNACIO BLANCO FIELD		
LA PLATA CO., COLORADO		
CHASE 112		5/1/91
DELETED 5-5	Scale 1:2,000	Hand, Date L



Elevation of the top of the Pictured Cliffs sandstone, showing structural features.



FOUR STAR OIL & GAS

EXHIBIT 4 STRUC MAP TOP OF PICT CLIFFS
FRUITLAND IGNACIO BLANCO FIELD
LA PLATA CO., COLORADO

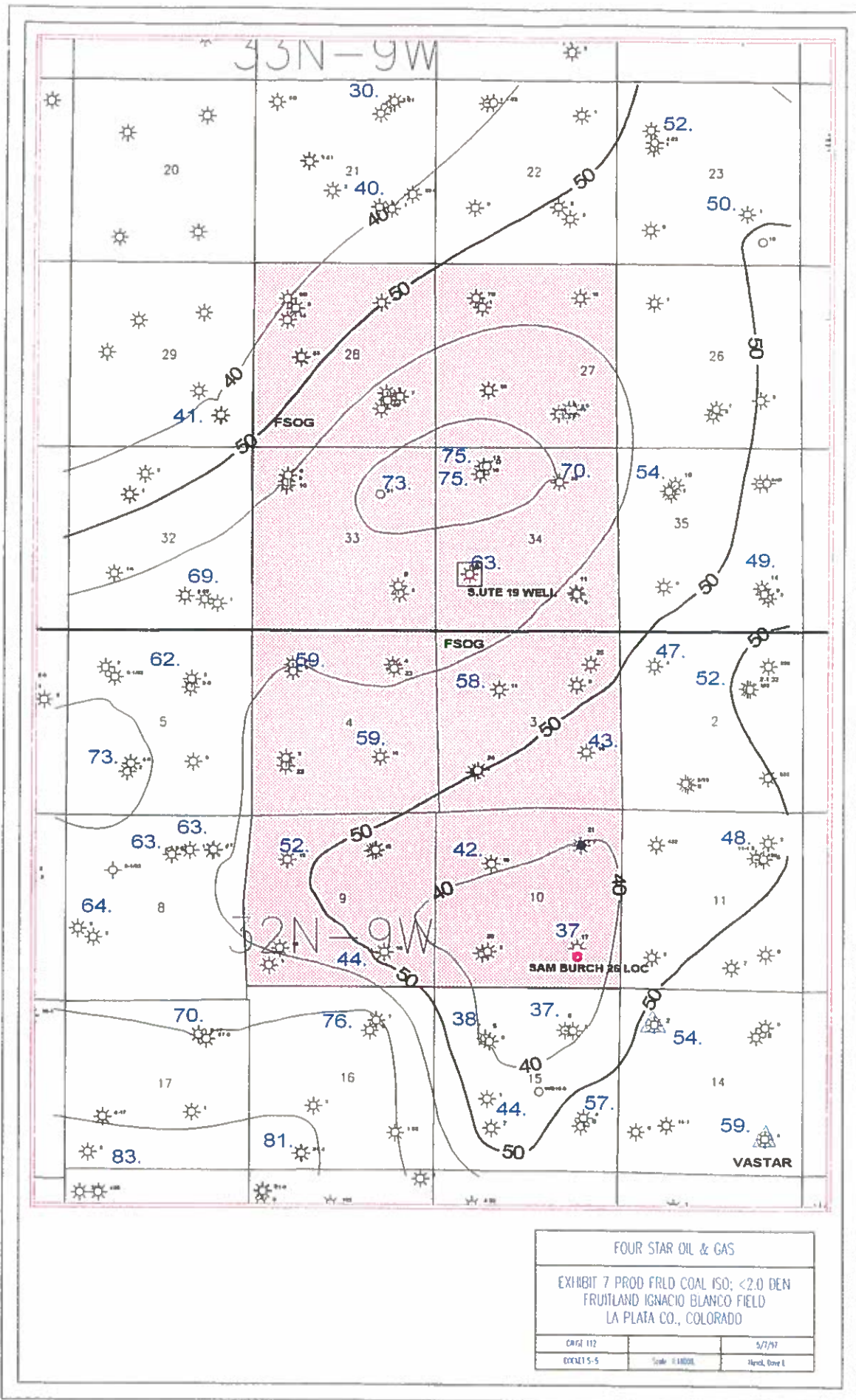
CHS# 112

5/7/91

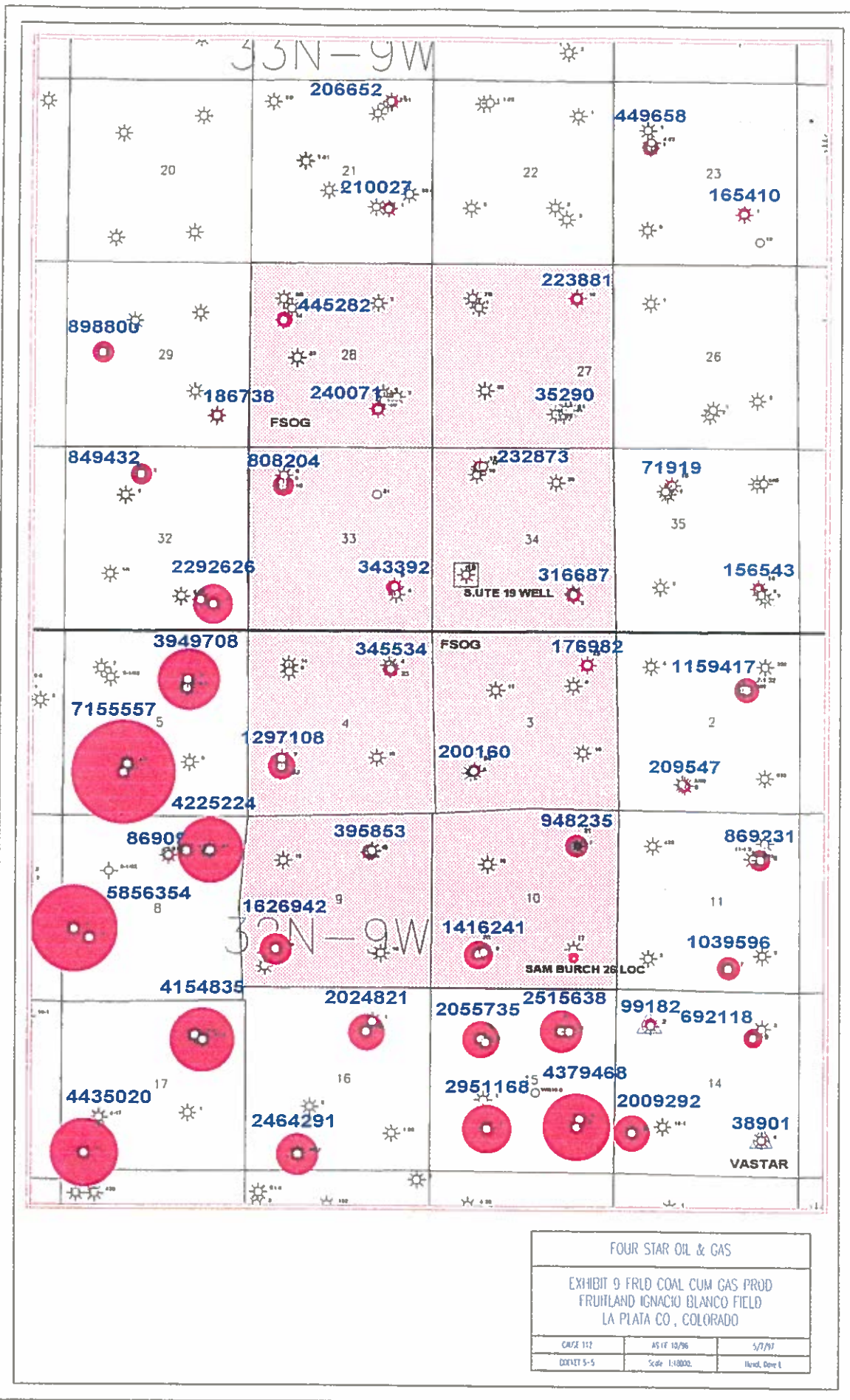
DOCKET 5-5

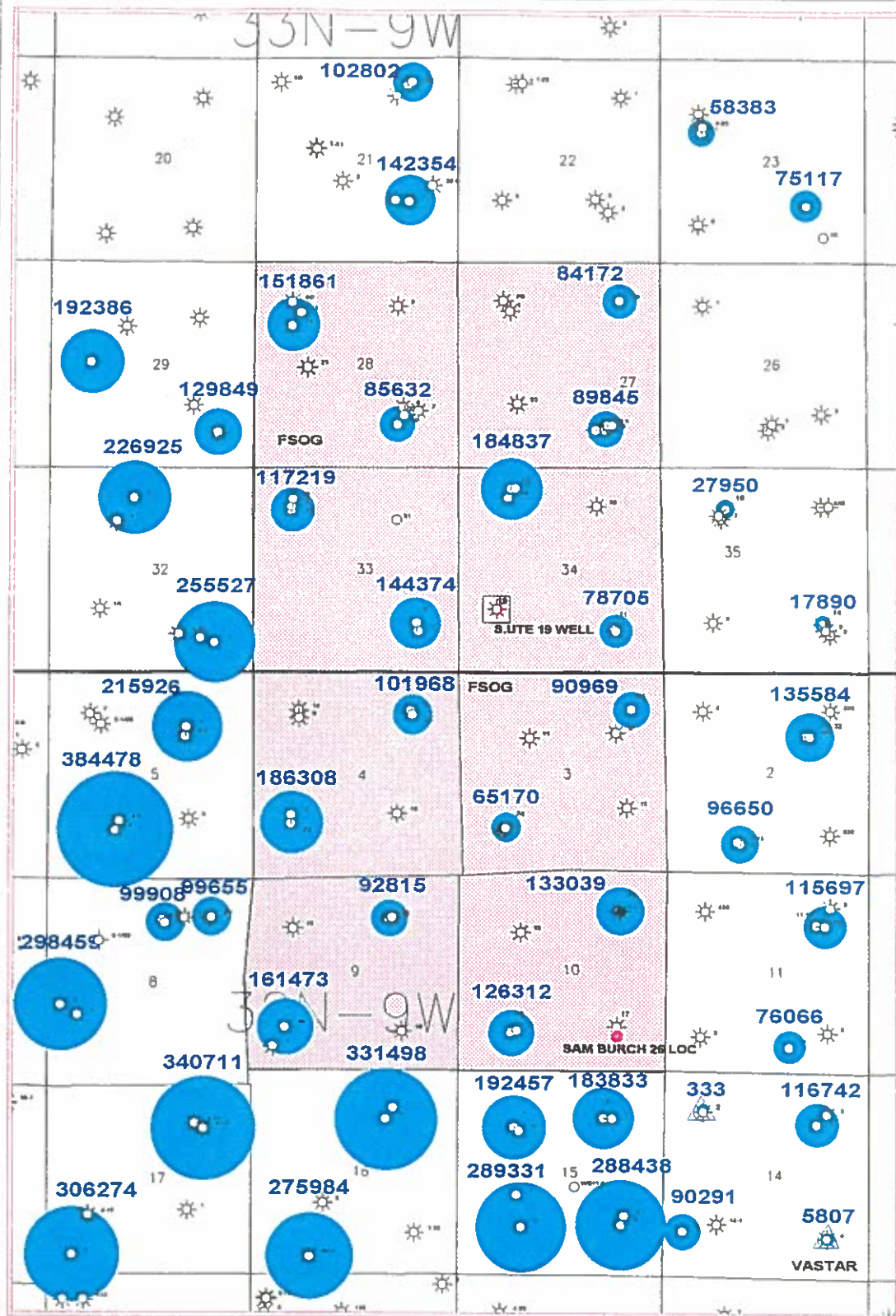
Scale 1:10000

Hand, Dave L



FOUR STAR OIL & GAS		
EXHIBIT 7 PROD FRLD COAL ISO; <2.0 DEN FRUITLAND IGNACIO BLANCO FIELD LA PLATA CO., COLORADO		
CHG 112	Scale: 1:10000	5/7/97
DOCKETS-5	Harold, Dave L.	

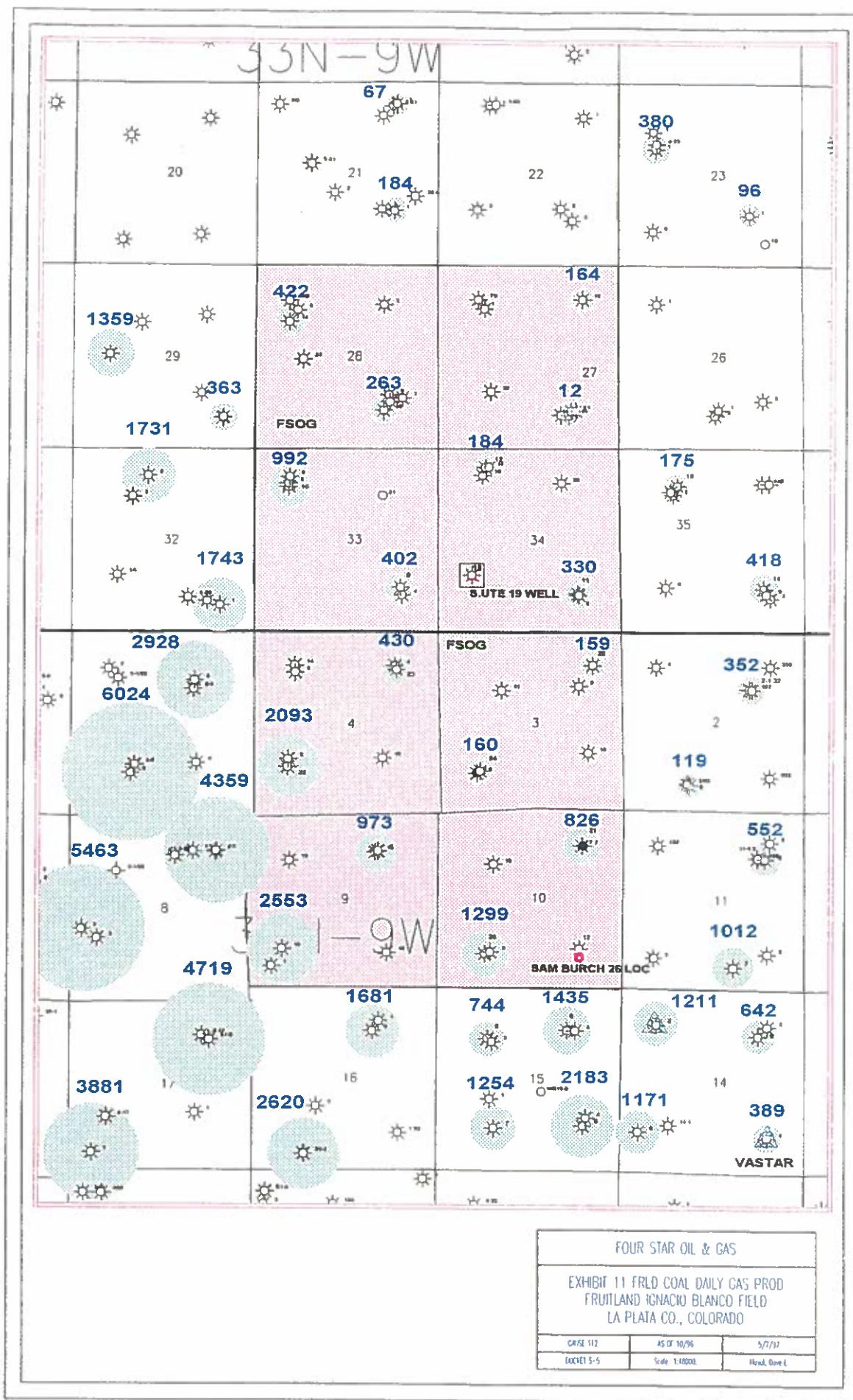


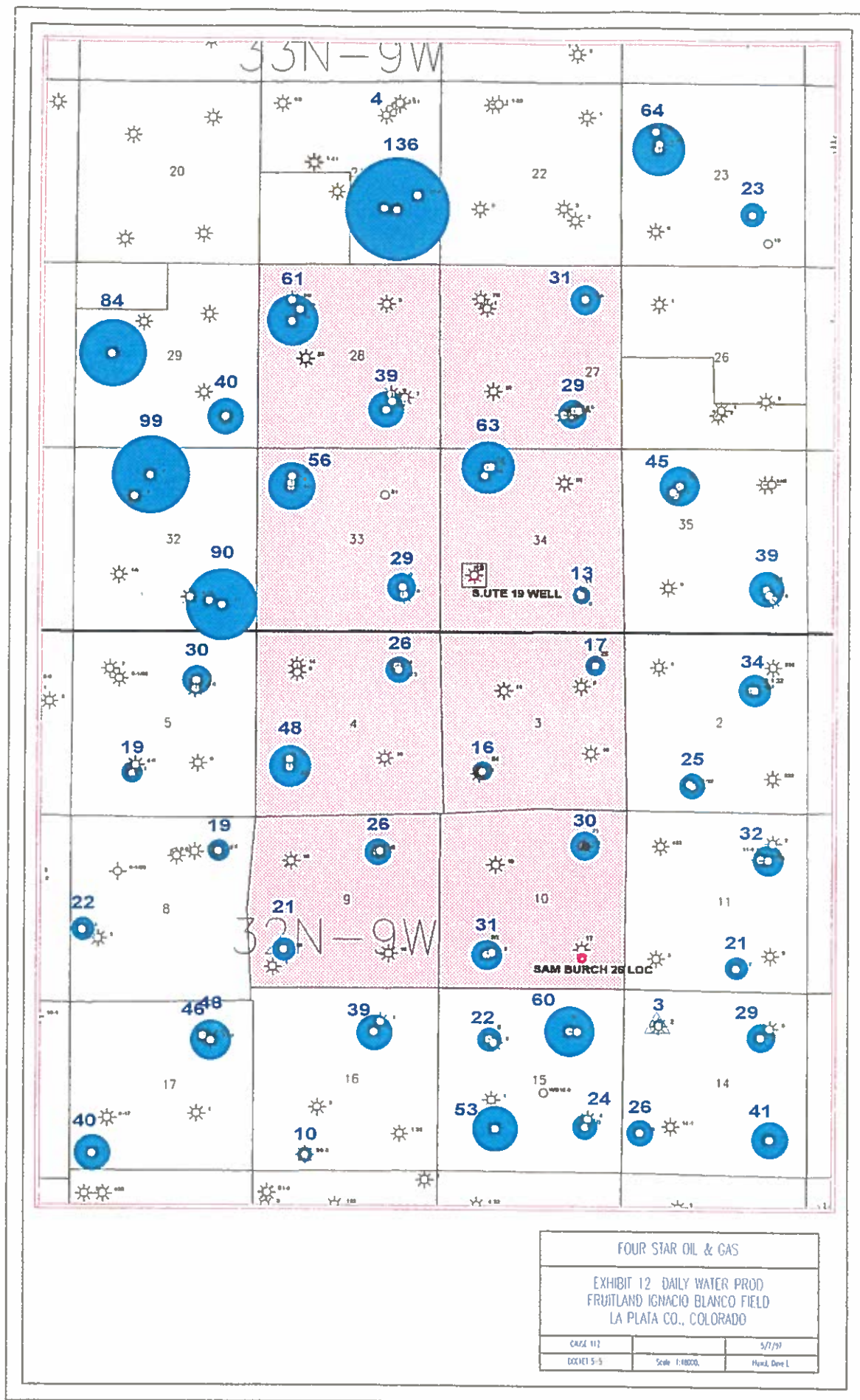


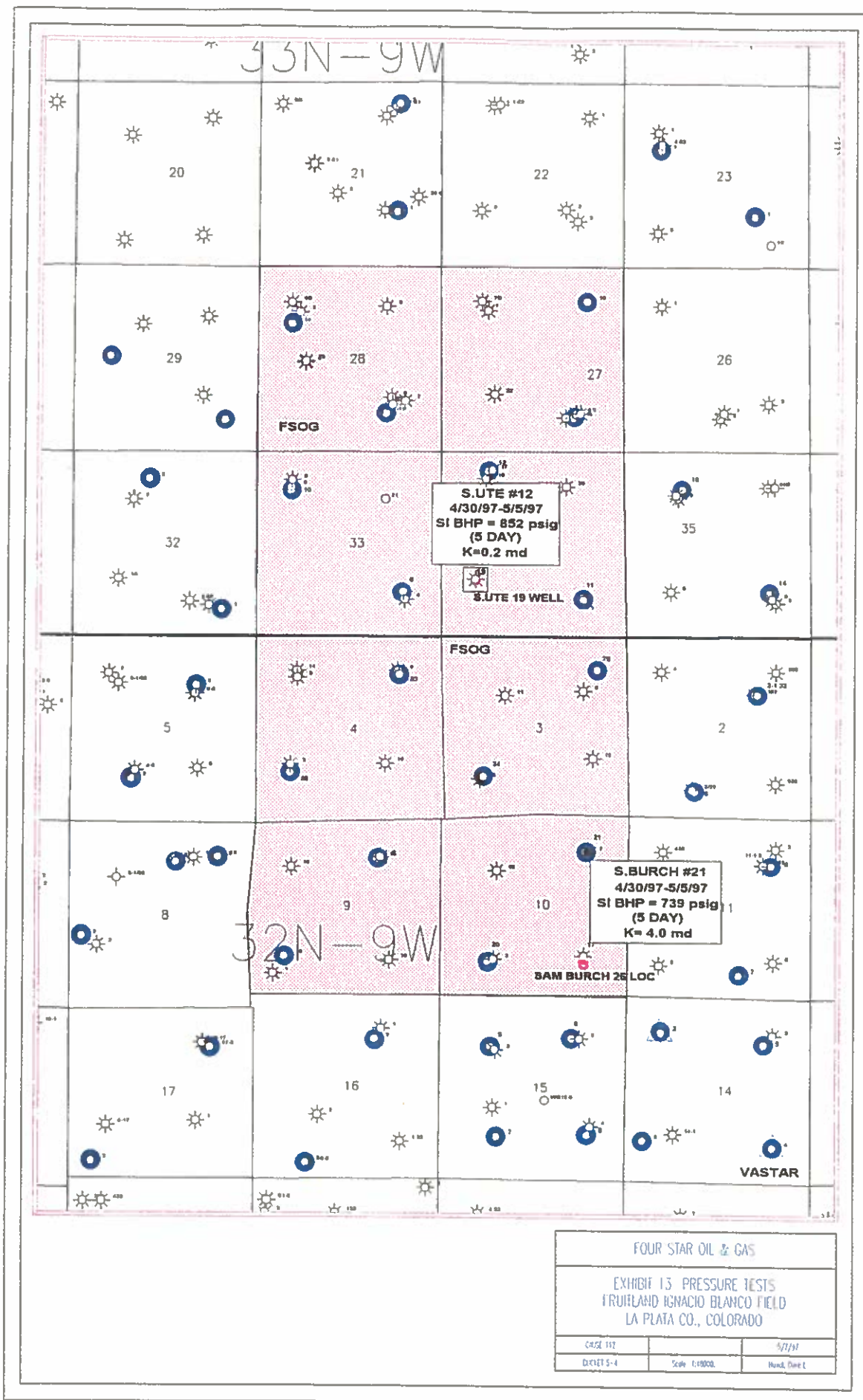
FOUR STAR OIL & GAS

EXHIBIT 10 FRLO COAL CUM WATER PROD
FRUITLAND IGNACIO BLANCO FIELD
LA PLATA CO., COLORADO

CHISEL 112	AS OF 10/96	5/7/97
LOCKET 5-5	Scale 1:48000	Amol, Dave L







FOUR STAR OIL GAS
CAUSE 112, DOCKET 5-4; SAM BURCH #26
FRUITLAND IGNACIO BLANCO FIELD; LA PLATA COUNTY, CO
5/5/97 By J.McHENRY

EXHIBIT 14
RECOVERY ESTIMATES

320: W 1/2 SEC 34 T33N,R9W		
OGIP: 14.4 BCF		
	<u>BCF</u>	<u>%</u>
RECOVERY	0.2	2
E.U.R.	1.8	13
VOLUMETRIC - LOW	3.5	25
VOLUMETRIC - MED	7.6	54
VOLUMETRIC - HIGH	9.9	70

320: E 1/2 SEC 34 T33N,R9W		
OGIP: 12.4 BCF		
	<u>BCF</u>	<u>%</u>
RECOVERY	0.3	2
E.U.R.	1.9	13
VOLUMETRIC - LOW	3.1	25
VOLUMETRIC - MED	6.7	54
VOLUMETRIC - HIGH	8.7	70

320: W 1/2 SEC 3 T32N,R9W		
OGIP: 12.6 BCF		
	<u>BCF</u>	<u>%</u>
RECOVERY	0.2	2
E.U.R.	1.5	12
VOLUMETRIC - LOW	3.2	25
VOLUMETRIC - MED	6.8	54
VOLUMETRIC - HIGH	8.8	70

320: E 1/2 SEC 3 T32N,R9W		
OGIP: 11.0 BCF		
	<u>BCF</u>	<u>%</u>
RECOVERY	0.2	2
E.U.R.	1.5	13
VOLUMETRIC - LOW	2.8	25
VOLUMETRIC - MED	6.0	54
VOLUMETRIC - HIGH	7.7	70

320: W 1/2 SEC 10 T32N,R9W		
OGIP: 11.7 BCF		
	<u>BCF</u>	<u>%</u>
RECOVERY	1.4	12
E.U.R.	6.1	52
VOLUMETRIC - LOW	2.9	25
VOLUMETRIC - MED	6.3	54
VOLUMETRIC - HIGH	8.2	70

320: E 1/2 SEC 10 T32N,R9W		
OGIP: 12.0 BCF		
	<u>BCF</u>	<u>%</u>
RECOVERY	0.9	8
E.U.R.	4.6	38
VOLUMETRIC - LOW	3.0	25
VOLUMETRIC - MED	6.5	54
VOLUMETRIC - HIGH	8.4	70

320: W 1/2 SEC 15 T32N,R9W		
OGIP: 12.8 BCF		
	<u>BCF</u>	<u>%</u>
RECOVERY	5.0	39
E.U.R.	9.0	70
VOLUMETRIC - LOW	3.2	25
VOLUMETRIC - MED	6.9	54
VOLUMETRIC - HIGH	9.0	70

320: E 1/2 SEC 15 T32N,R9W		
OGIP: 15.9 BCF		
	<u>BCF</u>	<u>%</u>
RECOVERY	6.9	43
E.U.R.	13.4	84
VOLUMETRIC - LOW	4.0	25
VOLUMETRIC - MED	8.6	54
VOLUMETRIC - HIGH	11.1	70



SOUTHERN UTE No. 19

Current Completion

WELL:
Southern Ute No. 19

LOCATION:
1650' FSL & 990' FWL
NW/4, SW/4, Sec. 34, T33N, R9W
La Plata County, CO

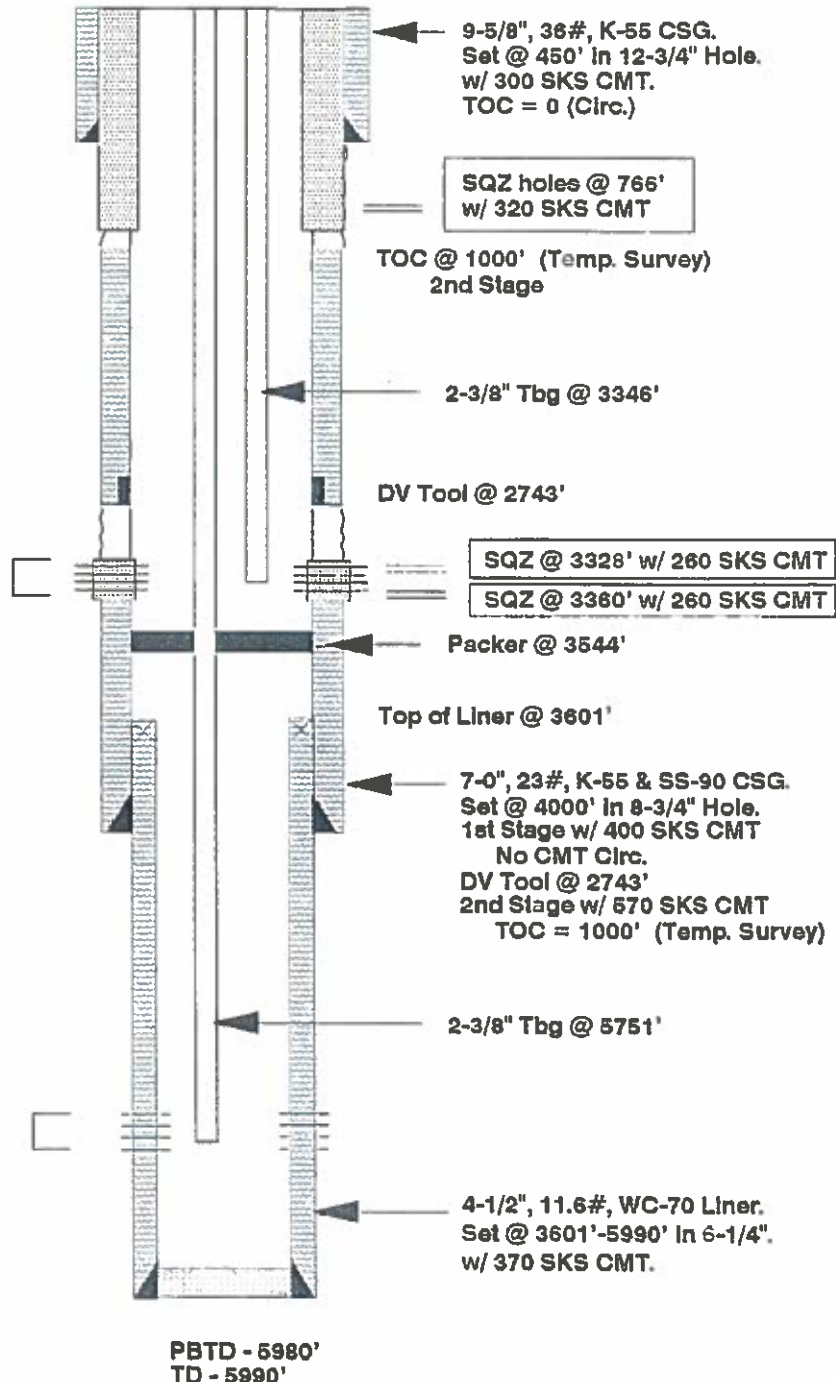
ELEVATION:
KB - 6721'
GR - 6708'

SPUD DATE: 11/14/92
COMPL. DATE: 1/25/93

PICTURED CLIFFS PERFS:
3328' - 3354'
Frac w/ 136,000#

FORMATION TOPS:
B/Ojo Alamo 2570'
Kirtland 2570'
Fruitland 2832'
Pictured Cliffs 3328'
Lewis 3774'
Cliffhouse 4989'
Menefee 5394'
Pt. Lookout 5700'
Mancos 5828'

MESA VERDE PERFS:
5366' - 5792'
Frac w/ 215,000#





SOUTHERN UTE No. 19

Proposed Completion

WELL:

Southern Ute No. 19

LOCATION:

1650' FSL & 990' FWL
NW/4, SW/4, Sec. 34, T33N, R9W
La Plata County, CO

ELEVATION:

KB - 6721'
GR - 6708'

SPUD DATE:

11/14/92

COMPL DATE:

1/26/93

FRUITLAND COAL PERFS:

2993' - 3251'

Frac 2 stages w/ 200,000# Sand

PICTURED CLIFFS PERFS:

3328' - 3354'

Frac w/ 136,000#

SQZ IN 1997

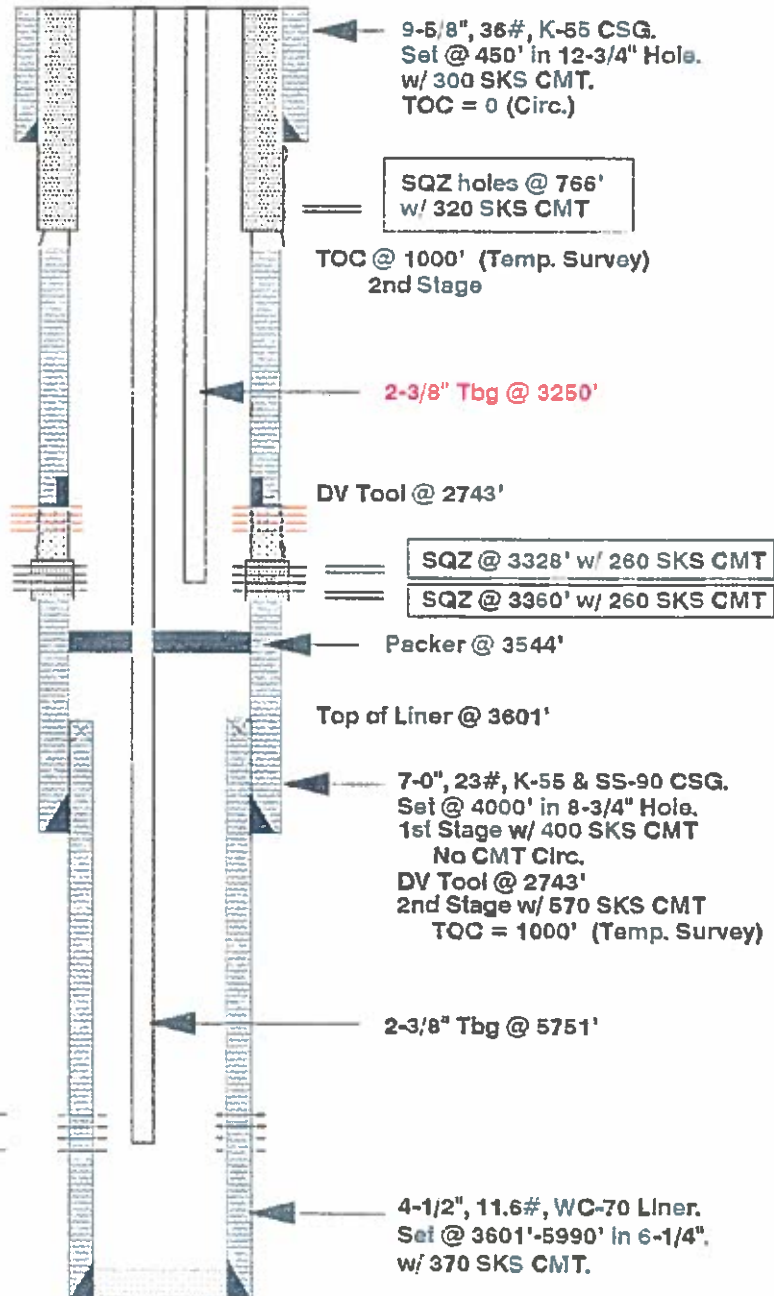
FORMATION TOPS:

B/Ojo Alamo 2670'
Kirtland 2570'
Fruitland 2832'
Pictured Cliffs 3328'
Lewis 3774'
Cliffhouse 4989'
Menefee 5394'
Pt Lookout 5700'
Mancos 5828'

MESA VERDE PERFS:

5366' - 5792'

Frac w/ 215,000#



PBTD - 5980'
TD - 5980'

FOUR STAR OIL GAS
CAUSE 112, DOCKET 5-5; SOUTHERN UTE 19
FRUITLAND IGNACIO BLANCO FIELD; LA PLATA COUNTY, CO
5/5/97 By J.McHENRY

EXHIBIT #17
ECONOMIC SUMMARY TABLE

INITIAL PRODUCTION:	250 MCFD
PEAK PRODUCTION:	450 MCFD IN 2 1/2 Years
WELL RESERVES:	1.2 BCF
SPACING UNIT RESERVES:	2.9 BCF (18% OGIP)

INVESTMENT:	\$171,000
--------------------	------------------

DISCOUNT RATE	10%
RATE OF RETURN:	123%
NET PRESENT VALUE:	\$481,000
PAYOUT:	1.4 Years
TAX CREDITS VALUE:	\$405,000