

EXTRACTION OIL & GAS

Location: COLORADO Slot: SLOT#13 JOHNSONS CORNER 13-N (2444'FNL & 2458'FEL, SEC.35)
Field: LARIMER COUNTY (NAD83/TN) Well: JOHNSONS CORNER 13-N
Facility: SEC.35-T05N-R68W Wellbore: JOHNSONS CORNER 13-N PWB

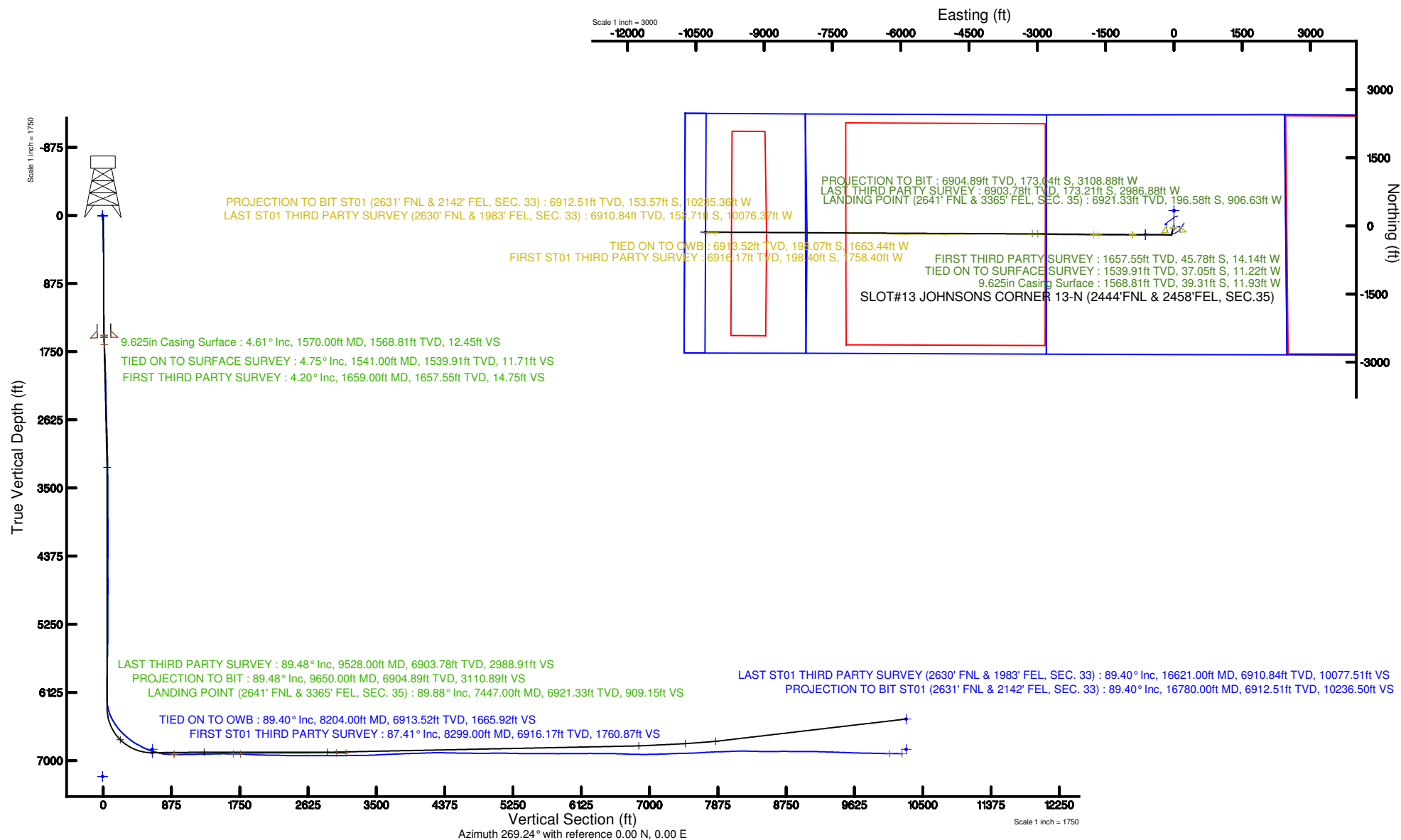
Plot reference wellbore is JOHNSONS CORNER 13-N PWB (REV 8.0)	Grid System: NAD83 - Location Colorado 50° Northern Zone (50°), UTM
True vertical depths are referenced to CYCLONE 37 (2016) (PWS)	North Reference: True north
Measured depths are referenced to CYCLONE 37 (2016) (PWS)	Scale: True distance
CYCLONE 37 (2016) (PWS) to Mean Sea Level: 5007 feet	Depths are in feet
Mean Sea Level to Ground level (At Slot: SLOT#13 JOHNSONS CORNER 13-N (2444'FNL & 2458'FEL, SEC.35): 0 feet	Created by: Lantipal on 2017-07-27
Coordinates are in feet referenced to Slot	Distance: Dancer



BGGM (1900.0 to 2018.0) Dip: 66.80° Field: 52395.5 nT
Magnetic North is 8.50 degrees East of True North (at 5/11/2017)

To correct azimuth from Magnetic to True add 8.50 degrees

**BAKER
HUGHES**
a GE company





Actual Wellpath Report

JOHNSONS CORNER 13-N ST01 AWP

Page n of nn



REFERENCE WELLPATH IDENTIFICATION

Operator	EXTRACTION OIL & GAS	Slot	SLOT#13 JOHNSONS CORNER 13-N (2444'FNL & 2458'FEL, SEC.35)
Area	COLORADO	Well	JOHNSONS CORNER 13-N
Field	LARIMER COUNTY (NAD83/TN)	Wellbore	JOHNSONS CORNER 13-N ST01 AWP
Facility	SEC.35-T05N-R68W	Sidetrack from	JOHNSONS CORNER 13-N AWP at 8204.00 MD

REPORT SETUP INFORMATION

Projection System	NAD83 / Lambert Colorado SP, Northern Zone (501), US feet	Software System	WellArchitect® 5.1
North Reference	True	User	Cantryat
Scale	0.999959	Report Generated	7/27/2017 at 1:37:37 PM
Convergence at slot	0.34° East	Database/Source file	Denver/JOHNSONS_CORNER_13-N_ST01_AWP.xml

WELLPATH LOCATION

	Local coordinates		Grid coordinates		Geographic coordinates	
	North[ft]	East[ft]	Easting[US ft]	Northing[US ft]	Latitude	Longitude
Slot Location	-336.28	-1.94	3146750.82	1373308.86	40°21'24.977"N	104°58'24.305"W
Facility Reference Pt			3146750.76	1373645.13	40°21'28.300"N	104°58'24.280"W
Field Reference Pt			3146750.79	1373645.09	40°21'28.300"N	104°58'24.280"W

WELLPATH DATUM

Calculation method	Minimum curvature	CYCLONE 37 (28'KB) (RKB) to Facility Vertical Datum	5037.00ft
Horizontal Reference Pt	Slot	CYCLONE 37 (28'KB) (RKB) to Mean Sea Level	5037.00ft
Vertical Reference Pt	CYCLONE 37 (28'KB) (RKB)	CYCLONE 37 (28'KB) (RKB) to Ground Level at Slot (SLOT#13 JOHNSONS CORNER 13-N (2444'FNL & 2458'FEL, SEC.35))	5037.00ft
MD Reference Pt	CYCLONE 37 (28'KB) (RKB)	Section Origin	N 0.00, E 0.00 ft
Field Vertical Reference	Mean Sea Level	Section Azimuth	269.24°



Actual Wellpath Report

JOHNSONS CORNER 13-N ST01 AWP

Page n of nn



REFERENCE WELLPATH IDENTIFICATION			
Operator	EXTRACTION OIL & GAS	Slot	SLOT#13 JOHNSONS CORNER 13-N (2444'FNL & 2458'FEL, SEC.35)
Area	COLORADO	Well	JOHNSONS CORNER 13-N
Field	LARIMER COUNTY (NAD83/TN)	Wellbore	JOHNSONS CORNER 13-N ST01 AWP
Facility	SEC.35-T05N-R68W	Sidetrack from	JOHNSONS CORNER 13-N AWP at 8204.00 MD

WELLPATH DATA (204 stations) † = interpolated/extrapolated station								
MD [ft]	Inclination [°]	Azimuth [°]	TVD [ft]	Vert Sect [ft]	North [ft]	East [ft]	DLS [°/100ft]	Comments
0.00†	0.000	272.090	0.00	0.00	0.00	0.00	0.00	
28.00	0.000	272.090	28.00	0.00	0.00	0.00	0.00	
128.00	0.400	272.090	128.00	0.35	0.01	-0.35	0.40	
162.00	0.350	270.070	162.00	0.57	0.02	-0.57	0.15	
194.00	0.620	228.230	194.00	0.80	-0.10	-0.80	1.34	
226.00	1.100	226.030	225.99	1.15	-0.43	-1.15	1.50	
258.00	0.880	259.690	257.99	1.62	-0.68	-1.61	1.91	
289.00	1.750	257.050	288.98	2.32	-0.83	-2.31	2.81	
353.00	2.070	254.420	352.95	4.39	-1.36	-4.37	0.52	
384.00	1.320	209.070	383.93	5.11	-1.82	-5.09	4.77	
416.00	0.880	164.860	415.93	5.23	-2.38	-5.20	2.88	
447.00	0.830	196.240	446.92	5.24	-2.83	-5.20	1.50	
479.00	0.620	200.720	478.92	5.37	-3.21	-5.33	0.68	
511.00	1.190	186.220	510.92	5.47	-3.71	-5.42	1.91	
542.00	0.880	186.750	541.91	5.54	-4.26	-5.49	1.00	
574.00	0.700	180.330	573.91	5.58	-4.70	-5.52	0.63	
605.00	0.400	176.200	604.91	5.58	-5.00	-5.51	0.98	
637.00	0.620	195.010	636.91	5.62	-5.28	-5.55	0.86	
668.00	0.830	205.820	667.90	5.76	-5.64	-5.69	0.81	
732.00	1.630	177.250	731.89	5.94	-6.97	-5.85	1.54	
763.00	1.580	196.770	762.88	6.05	-7.82	-5.95	1.76	
795.00	0.750	169.690	794.87	6.15	-8.45	-6.04	3.04	
827.00	0.700	220.230	826.87	6.24	-8.80	-6.13	1.94	
858.00	0.310	278.240	857.87	6.45	-8.93	-6.33	1.93	
890.00	0.180	291.860	889.87	6.58	-8.90	-6.47	0.44	
921.00	0.400	191.930	920.87	6.65	-8.99	-6.53	1.50	
953.00	0.350	151.330	952.87	6.63	-9.19	-6.51	0.83	
985.00	0.130	198.700	984.87	6.60	-9.31	-6.47	0.87	
1016.00	0.480	313.220	1015.87	6.70	-9.25	-6.58	1.76	
1048.00	0.260	98.240	1047.86	6.73	-9.17	-6.61	2.22	



Actual Wellpath Report

JOHNSONS CORNER 13-N ST01 AWP

Page n of nn



REFERENCE WELLPATH IDENTIFICATION			
Operator	EXTRACTION OIL & GAS	Slot	SLOT#13 JOHNSONS CORNER 13-N (2444'FNL & 2458'FEL, SEC.35)
Area	COLORADO	Well	JOHNSONS CORNER 13-N
Field	LARIMER COUNTY (NAD83/TN)	Wellbore	JOHNSONS CORNER 13-N ST01 AWP
Facility	SEC.35-T05N-R68W	Sidetrack from	JOHNSONS CORNER 13-N AWP at 8204.00 MD

WELLPATH DATA (204 stations)								
MD [ft]	Inclination [°]	Azimuth [°]	TVD [ft]	Vert Sect [ft]	North [ft]	East [ft]	DLS [°/100ft]	Comments
1080.00	0.570	160.910	1079.86	6.61	-9.33	-6.48	1.58	
1112.00	1.100	161.080	1111.86	6.46	-9.77	-6.33	1.66	
1143.00	2.200	188.590	1142.85	6.46	-10.64	-6.32	4.28	
1175.00	2.640	189.380	1174.82	6.69	-11.98	-6.54	1.38	
1207.00	3.210	188.940	1206.78	6.97	-13.59	-6.79	1.78	
1238.00	3.650	195.530	1237.72	7.40	-15.40	-7.19	1.90	
1270.00	3.470	197.030	1269.66	7.98	-17.30	-7.75	0.63	
1302.00	3.650	192.720	1301.60	8.51	-19.22	-8.26	1.01	
1334.00	3.960	191.840	1333.53	8.99	-21.30	-8.71	0.99	
1365.00	3.820	193.780	1364.46	9.48	-23.35	-9.17	0.62	
1397.00	4.170	187.190	1396.38	9.91	-25.54	-9.57	1.80	
1429.00	4.530	184.900	1428.29	10.20	-27.95	-9.83	1.25	
1461.00	5.010	186.920	1460.18	10.51	-30.60	-10.10	1.59	
1493.00	4.750	186.480	1492.06	10.86	-33.30	-10.42	0.82	
1524.00	4.440	193.860	1522.96	11.33	-35.74	-10.85	2.15	
1541.00	4.750	197.200	1539.91	11.71	-37.05	-11.22	2.41	TIED ON TO SURFACE SURVEY
1659.00	4.200	200.020	1657.55	14.75	-45.78	-14.14	0.50	FIRST THIRD PARTY SURVEY
1753.00	7.110	203.010	1751.08	18.31	-54.37	-17.60	3.11	
1847.00	6.890	201.380	1844.38	22.78	-64.98	-21.93	0.32	
1942.00	6.320	195.790	1938.75	26.42	-75.31	-25.43	0.90	
2036.00	5.920	195.390	2032.21	29.24	-84.97	-28.12	0.43	
2131.00	5.480	193.410	2126.74	31.71	-94.10	-30.47	0.51	
2226.00	5.300	192.220	2221.32	33.81	-102.80	-32.45	0.22	
2320.00	5.080	188.600	2314.94	35.46	-111.16	-34.00	0.42	
2415.00	5.080	188.600	2409.56	36.83	-119.48	-35.25	0.00	
2509.00	6.720	196.580	2503.06	39.15	-128.86	-37.44	1.95	
2604.00	6.010	196.710	2597.48	42.29	-138.95	-40.46	0.75	
2699.00	5.610	195.920	2691.99	45.12	-148.18	-43.16	0.43	
2793.00	5.210	198.120	2785.57	47.82	-156.66	-45.75	0.48	
2888.00	4.600	200.500	2880.22	50.60	-164.33	-48.43	0.68	



Actual Wellpath Report

JOHNSONS CORNER 13-N ST01 AWP

Page n of nn



REFERENCE WELLPATH IDENTIFICATION

Operator	EXTRACTION OIL & GAS	Slot	SLOT#13 JOHNSONS CORNER 13-N (2444'FNL & 2458'FEL, SEC.35)
Area	COLORADO	Well	JOHNSONS CORNER 13-N
Field	LARIMER COUNTY (NAD83/TN)	Wellbore	JOHNSONS CORNER 13-N ST01 AWP
Facility	SEC.35-T05N-R68W	Sidetrack from	JOHNSONS CORNER 13-N AWP at 8204.00 MD

WELLPATH DATA (204 stations)

MD [ft]	Inclination [°]	Azimuth [°]	TVD [ft]	Vert Sect [ft]	North [ft]	East [ft]	DLS [°/100ft]	Comments
2982.00	4.290	193.100	2973.94	52.80	-171.28	-50.54	0.69	
3077.00	3.710	195.300	3068.71	54.51	-177.71	-52.16	0.63	
3172.00	3.400	193.190	3163.53	56.04	-183.41	-53.62	0.35	
3266.00	2.300	193.190	3257.41	57.16	-187.96	-54.68	1.17	
3361.00	2.390	190.320	3352.33	58.00	-191.77	-55.47	0.16	
3455.00	0.710	205.790	3446.29	58.64	-194.22	-56.08	1.83	
3550.00	0.710	217.200	3541.28	59.26	-195.22	-56.69	0.15	
3645.00	0.880	216.320	3636.27	60.07	-196.28	-57.48	0.18	
3740.00	0.490	9.690	3731.27	60.43	-196.46	-57.84	1.41	
3930.00	0.490	309.790	3921.27	60.90	-195.14	-58.33	0.26	
4024.00	0.710	289.120	4015.26	61.75	-194.70	-59.19	0.32	
4119.00	0.880	288.810	4110.25	63.00	-194.27	-60.43	0.18	
4213.00	1.100	108.180	4204.25	62.82	-194.32	-60.26	2.11	
4308.00	0.710	124.620	4299.23	61.48	-194.94	-58.91	0.49	
4402.00	0.310	88.880	4393.23	60.75	-195.26	-58.17	0.52	
4497.00	0.090	39.700	4488.23	60.45	-195.20	-57.87	0.27	
4591.00	0.400	340.810	4582.23	60.50	-194.83	-57.93	0.38	
4686.00	0.710	340.020	4677.23	60.80	-193.97	-58.24	0.33	
4780.00	0.620	334.600	4771.22	61.20	-192.96	-58.66	0.12	
4874.00	1.410	145.550	4865.21	60.77	-193.45	-58.22	2.15	
4968.00	1.410	155.990	4959.18	59.68	-195.46	-57.10	0.27	
5063.00	1.020	158.020	5054.16	58.91	-197.32	-56.30	0.41	
5157.00	1.190	167.980	5148.14	58.42	-199.05	-55.79	0.27	
5251.00	0.880	181.990	5242.13	58.26	-200.72	-55.61	0.42	
5346.00	1.190	159.390	5337.11	57.96	-202.37	-55.29	0.53	
5440.00	1.190	203.890	5431.10	58.03	-204.18	-55.34	0.96	
5535.00	1.500	48.820	5526.09	57.50	-204.26	-54.80	2.77	
5629.00	1.280	54.590	5620.06	55.70	-202.85	-53.02	0.28	
5724.00	1.190	53.010	5715.04	54.03	-201.64	-51.37	0.10	
5818.00	1.100	32.300	5809.02	52.75	-200.29	-50.11	0.45	



Actual Wellpath Report

JOHNSONS CORNER 13-N ST01 AWP

Page n of nn



REFERENCE WELLPATH IDENTIFICATION

Operator	EXTRACTION OIL & GAS	Slot	SLOT#13 JOHNSONS CORNER 13-N (2444'FNL & 2458'FEL, SEC.35)
Area	COLORADO	Well	JOHNSONS CORNER 13-N
Field	LARIMER COUNTY (NAD83/TN)	Wellbore	JOHNSONS CORNER 13-N ST01 AWP
Facility	SEC.35-T05N-R68W	Sidetrack from	JOHNSONS CORNER 13-N AWP at 8204.00 MD

WELLPATH DATA (204 stations)

MD [ft]	Inclination [°]	Azimuth [°]	TVD [ft]	Vert Sect [ft]	North [ft]	East [ft]	DLS [°/100ft]	Comments
5912.00	0.490	46.490	5903.01	51.96	-199.25	-49.33	0.68	
6007.00	0.310	77.990	5998.01	51.41	-198.91	-48.79	0.29	
6124.00	0.310	84.910	6115.00	50.79	-198.82	-48.16	0.03	
6219.00	0.490	202.620	6210.00	50.69	-199.17	-48.06	0.73	
6313.00	9.010	275.590	6303.61	58.18	-198.83	-55.56	9.45	
6407.00	20.280	275.500	6394.41	81.77	-196.54	-79.18	11.99	
6502.00	29.700	269.850	6480.43	121.76	-195.02	-119.19	10.22	
6595.00	35.480	269.290	6558.75	171.83	-195.42	-169.26	6.22	
6690.00	43.610	269.600	6631.95	232.26	-195.99	-229.69	8.56	
6784.00	49.490	271.490	6696.57	300.45	-195.28	-297.90	6.42	
6878.00	55.280	269.820	6753.92	374.85	-194.47	-372.32	6.32	
6973.00	62.480	269.510	6802.99	456.13	-194.96	-453.59	7.58	
7068.00	64.520	269.930	6845.37	541.14	-195.37	-538.60	2.18	
7162.00	72.780	268.010	6879.57	628.60	-196.98	-626.05	8.99	
7257.00	77.600	269.200	6903.85	720.41	-199.21	-717.84	5.22	
7352.00	85.680	271.190	6917.65	814.31	-198.87	-811.75	8.75	
7447.00	89.880	271.580	6921.33	909.15	-196.58	-906.63	4.44	LANDING POINT (2641' FNL & 3365' FEL, SEC. 35)
7542.00	90.280	268.980	6921.19	1004.13	-196.11	-1001.62	2.77	
7636.00	90.590	268.810	6920.48	1098.12	-197.93	-1095.60	0.38	
7731.00	91.690	268.190	6918.59	1193.09	-200.41	-1190.55	1.33	
7825.00	90.720	270.790	6916.61	1287.06	-201.25	-1284.51	2.95	
7920.00	90.900	270.790	6915.27	1382.02	-199.94	-1379.49	0.19	
8015.00	91.690	270.300	6913.12	1476.97	-199.04	-1474.46	0.98	
8109.00	89.220	270.480	6912.38	1570.94	-198.40	-1568.45	2.63	
8204.00	89.400	269.910	6913.52	1665.92	-198.07	-1663.44	0.63	TIED ON TO OWB
8299.00	87.410	269.690	6916.17	1760.87	-198.40	-1758.40	2.11	FIRST ST01 THIRD PARTY SURVEY
8393.00	86.790	268.980	6920.92	1854.75	-199.49	-1852.27	1.00	
8488.00	87.190	269.290	6925.91	1949.62	-200.93	-1947.13	0.53	
8583.00	88.910	271.190	6929.14	2044.54	-200.53	-2042.07	2.70	
8677.00	88.910	271.010	6930.93	2138.47	-198.72	-2136.03	0.19	



Actual Wellpath Report

JOHNSONS CORNER 13-N ST01 AWP

Page n of nn



REFERENCE WELLPATH IDENTIFICATION

Operator	EXTRACTION OIL & GAS	Slot	SLOT#13 JOHNSONS CORNER 13-N (2444'FNL & 2458'FEL, SEC.35)
Area	COLORADO	Well	JOHNSONS CORNER 13-N
Field	LARIMER COUNTY (NAD83/TN)	Wellbore	JOHNSONS CORNER 13-N ST01 AWP
Facility	SEC.35-T05N-R68W	Sidetrack from	JOHNSONS CORNER 13-N AWP at 8204.00 MD

WELLPATH DATA (204 stations)

MD [ft]	Inclination [°]	Azimuth [°]	TVD [ft]	Vert Sect [ft]	North [ft]	East [ft]	DLS [°/100ft]	Comments
8772.00	89.400	271.320	6932.33	2233.41	-196.79	-2231.00	0.61	
8867.00	87.410	270.000	6934.98	2328.34	-195.70	-2325.95	2.51	
8961.00	89.220	271.100	6937.74	2422.27	-194.80	-2419.90	2.25	
9056.00	90.010	271.410	6938.38	2517.21	-192.71	-2514.88	0.89	
9150.00	91.520	271.710	6937.12	2611.12	-190.16	-2608.83	1.64	
9245.00	89.790	271.010	6936.04	2706.04	-187.90	-2703.79	1.96	
9339.00	89.700	270.700	6936.46	2800.00	-186.50	-2797.78	0.34	
9434.00	89.220	270.480	6937.35	2894.97	-185.52	-2892.77	0.56	
9528.00	90.280	272.420	6937.76	2988.90	-183.14	-2986.74	2.35	
9622.00	91.690	271.320	6936.15	3082.78	-180.08	-3080.67	1.90	
9717.00	90.100	270.790	6934.66	3177.72	-178.33	-3175.64	1.76	
9812.00	90.100	270.390	6934.50	3272.69	-177.35	-3270.63	0.42	
9907.00	91.210	271.410	6933.41	3367.64	-175.86	-3365.61	1.59	
10001.00	92.620	270.790	6930.27	3461.54	-174.05	-3459.54	1.64	
10095.00	93.500	271.010	6925.25	3555.36	-172.58	-3553.39	0.96	
10190.00	92.000	270.610	6920.69	3650.22	-171.24	-3648.27	1.63	
10285.00	92.310	270.610	6917.12	3745.12	-170.23	-3743.20	0.33	
10379.00	93.020	270.480	6912.75	3838.99	-169.33	-3837.09	0.77	
10474.00	90.810	269.600	6909.58	3933.93	-169.27	-3932.03	2.50	
10569.00	92.000	270.480	6907.25	4028.89	-169.20	-4027.00	1.56	
10663.00	92.400	270.080	6903.64	4122.80	-168.74	-4120.93	0.60	
10758.00	91.380	270.300	6900.50	4217.73	-168.43	-4215.88	1.10	
10853.00	89.620	269.380	6899.68	4312.72	-168.69	-4310.87	2.09	
10947.00	88.690	268.320	6901.06	4406.71	-170.58	-4404.84	1.50	
11042.00	88.690	268.720	6903.23	4501.67	-173.03	-4499.78	0.42	
11136.00	89.220	268.890	6904.95	4595.65	-174.99	-4593.74	0.59	
11231.00	89.400	268.720	6906.09	4690.64	-176.97	-4688.71	0.26	
11326.00	89.480	270.000	6907.02	4785.64	-178.03	-4783.70	1.35	
11515.00	90.990	269.380	6906.25	4974.62	-179.06	-4972.69	0.86	
11609.00	90.410	270.390	6905.10	5068.61	-179.25	-5066.68	1.24	



Actual Wellpath Report

JOHNSONS CORNER 13-N ST01 AWP

Page n of nn



REFERENCE WELLPATH IDENTIFICATION

Operator	EXTRACTION OIL & GAS	Slot	SLOT#13 JOHNSONS CORNER 13-N (2444'FNL & 2458'FEL, SEC.35)
Area	COLORADO	Well	JOHNSONS CORNER 13-N
Field	LARIMER COUNTY (NAD83/TN)	Wellbore	JOHNSONS CORNER 13-N ST01 AWP
Facility	SEC.35-T05N-R68W	Sidetrack from	JOHNSONS CORNER 13-N AWP at 8204.00 MD

WELLPATH DATA (204 stations)

MD [ft]	Inclination [°]	Azimuth [°]	TVD [ft]	Vert Sect [ft]	North [ft]	East [ft]	DLS [°/100ft]	Comments
11704.00	88.290	270.300	6906.17	5163.58	-178.67	-5161.67	2.23	
11798.00	88.910	270.300	6908.47	5257.54	-178.18	-5255.64	0.66	
11893.00	89.400	270.300	6909.87	5352.51	-177.68	-5350.63	0.52	
11987.00	89.620	269.380	6910.68	5446.50	-177.95	-5444.62	1.01	
12082.00	89.880	271.100	6911.09	5541.48	-177.55	-5539.62	1.83	
12177.00	90.280	270.700	6910.96	5636.44	-176.06	-5634.61	0.60	
12271.00	89.090	268.320	6911.48	5730.43	-176.86	-5728.59	2.83	
12366.00	89.880	268.980	6912.33	5825.42	-179.10	-5823.56	1.08	
12461.00	91.780	270.610	6910.95	5920.40	-179.44	-5918.54	2.63	
12555.00	89.790	271.580	6909.67	6014.33	-177.64	-6012.51	2.36	
12650.00	89.880	271.010	6909.94	6109.27	-175.49	-6107.49	0.61	
12744.00	90.590	271.890	6909.55	6203.20	-173.12	-6201.45	1.20	
12839.00	89.220	272.680	6909.71	6298.06	-169.33	-6296.37	1.66	
12933.00	90.010	273.210	6910.34	6391.86	-164.50	-6390.25	1.01	
13028.00	89.790	271.890	6910.51	6486.70	-160.27	-6485.15	1.41	
13123.00	87.890	270.480	6912.43	6581.62	-158.31	-6580.10	2.49	
13217.00	87.980	270.700	6915.82	6675.53	-157.34	-6674.04	0.25	
13311.00	88.290	270.790	6918.88	6769.45	-156.12	-6767.98	0.34	
13406.00	89.220	270.390	6920.94	6864.40	-155.14	-6862.95	1.07	
13501.00	90.410	269.600	6921.25	6959.39	-155.15	-6957.95	1.50	
13595.00	91.210	270.000	6919.92	7053.38	-155.48	-7051.94	0.95	
13690.00	91.780	270.610	6917.44	7148.33	-154.97	-7146.90	0.88	
13784.00	92.710	270.390	6913.76	7242.23	-154.15	-7240.83	1.02	
13879.00	91.780	270.790	6910.04	7337.13	-153.18	-7335.75	1.07	
13973.00	90.990	270.610	6907.77	7431.07	-152.03	-7429.71	0.86	
14068.00	91.910	271.010	6905.36	7526.01	-150.68	-7524.67	1.06	
14162.00	93.280	270.610	6901.11	7619.87	-149.36	-7618.56	1.52	
14257.00	93.900	270.390	6895.16	7714.66	-148.53	-7713.37	0.69	
14351.00	92.180	270.480	6890.17	7808.51	-147.82	-7807.23	1.83	
14446.00	91.300	269.910	6887.29	7903.45	-147.49	-7902.19	1.10	



Actual Wellpath Report

JOHNSONS CORNER 13-N ST01 AWP

Page n of nn



REFERENCE WELLPATH IDENTIFICATION			
Operator	EXTRACTION OIL & GAS	Slot	SLOT#13 JOHNSONS CORNER 13-N (2444'FNL & 2458'FEL, SEC.35)
Area	COLORADO	Well	JOHNSONS CORNER 13-N
Field	LARIMER COUNTY (NAD83/TN)	Wellbore	JOHNSONS CORNER 13-N ST01 AWP
Facility	SEC.35-T05N-R68W	Sidetrack from	JOHNSONS CORNER 13-N AWP at 8204.00 MD

WELLPATH DATA (204 stations)

MD [ft]	Inclination [°]	Azimuth [°]	TVD [ft]	Vert Sect [ft]	North [ft]	East [ft]	DLS [°/100ft]	Comments
14540.00	92.090	269.690	6884.51	7997.40	-147.82	-7996.15	0.87	
14635.00	92.180	269.690	6880.97	8092.33	-148.34	-8091.08	0.09	
14729.00	90.280	270.220	6878.95	8186.30	-148.41	-8185.05	2.10	
14824.00	87.980	270.300	6880.39	8281.27	-147.98	-8280.03	2.42	
14919.00	89.090	270.480	6882.82	8376.21	-147.33	-8375.00	1.18	
15013.00	89.310	270.390	6884.13	8470.18	-146.62	-8468.99	0.25	
15108.00	90.280	270.220	6884.47	8565.17	-146.11	-8563.98	1.04	
15202.00	90.990	269.910	6883.43	8659.15	-146.01	-8657.98	0.82	
15297.00	89.620	270.300	6882.93	8754.14	-145.83	-8752.97	1.50	
15392.00	89.310	270.000	6883.81	8849.12	-145.58	-8847.97	0.45	
15487.00	90.190	270.080	6884.23	8944.11	-145.52	-8942.97	0.93	
15581.00	89.790	271.800	6884.24	9038.06	-143.97	-9036.95	1.88	
15676.00	88.690	271.490	6885.50	9132.97	-141.25	-9131.90	1.20	
15771.00	87.980	270.390	6888.26	9227.89	-139.69	-9226.85	1.38	
15865.00	88.690	269.820	6891.00	9321.83	-139.52	-9320.81	0.97	
15959.00	87.800	269.290	6893.87	9415.79	-140.25	-9414.76	1.10	
16054.00	87.720	269.380	6897.59	9510.72	-141.35	-9509.68	0.13	
16148.00	87.890	268.890	6901.19	9604.65	-142.77	-9603.60	0.55	
16243.00	88.910	269.290	6903.84	9699.61	-144.27	-9698.55	1.15	
16337.00	89.000	268.890	6905.56	9793.59	-145.77	-9792.52	0.44	
16432.00	89.220	268.720	6907.03	9888.58	-147.75	-9887.49	0.29	
16527.00	88.380	267.790	6909.02	9983.54	-150.64	-9982.42	1.32	
16621.00	89.400	269.690	6910.84	10077.51	-152.71	-10076.37	2.29	LAST ST01 THIRD PARTY SURVEY (2630' FNL & 1983' FEL, SEC. 33)
16780.00	89.400	269.690	6912.51	10236.50	-153.57	-10235.36	0.00	PROJECTION TO BIT ST01 (2631' FNL & 2142' FEL, SEC. 33)



Actual Wellpath Report

JOHNSONS CORNER 13-N ST01 AWP
Page n of nn



REFERENCE WELLPATH IDENTIFICATION			
Operator	EXTRACTION OIL & GAS	Slot	SLOT#13 JOHNSONS CORNER 13-N (2444'FNL & 2458'FEL, SEC.35)
Area	COLORADO	Well	JOHNSONS CORNER 13-N
Field	LARIMER COUNTY (NAD83/TN)	Wellbore	JOHNSONS CORNER 13-N ST01 AWP
Facility	SEC.35-T05N-R68W	Sidetrack from	JOHNSONS CORNER 13-N AWP at 8204.00 MD

HOLE & CASING SECTIONS									
- Ref Wellbore: JOHNSONS CORNER 13-N ST01 AWP					Ref Wellpath: JOHNSONS CORNER 13-N ST01 AWP				
String/Diameter	Start MD [ft]	End MD [ft]	Interval [ft]	Start TVD [ft]	End TVD [ft]	Start N/S [ft]	Start E/W [ft]	End N/S [ft]	End E/W [ft]
9.625in Casing Surface	28.00	1570.00	1542.00	28.00	1568.81	0.00	0.00	-39.31	-11.93
8.5in Open Hole	1570.00	8204.00	6634.00	1568.81	6913.52	-39.31	-11.93	-198.07	-1663.44
8.5in Open Hole	8204.00	16780.00	8576.00	6913.52	6912.51	-198.07	-1663.44	-153.57	-10235.36



Actual Wellpath Report

JOHNSONS CORNER 13-N ST01 AWP

Page n of nn



REFERENCE WELLPATH IDENTIFICATION			
Operator	EXTRACTION OIL & GAS	Slot	SLOT#13 JOHNSONS CORNER 13-N (2444'FNL & 2458'FEL, SEC.35)
Area	COLORADO	Well	JOHNSONS CORNER 13-N
Field	LARIMER COUNTY (NAD83/TN)	Wellbore	JOHNSONS CORNER 13-N ST01 AWP
Facility	SEC.35-T05N-R68W	Sidetrack from	JOHNSONS CORNER 13-N AWP at 8204.00 MD

TARGETS								
Name	TVD [ft]	North [ft]	East [ft]	Grid East [US ft]	Grid North [US ft]	Latitude	Longitude	Shape
JOHNSONS CORNER EAST 1-N SECTION 31	5.00	336.28	1.94	3146750.76	1373645.13	40°21'28.300"N	104°58'24.280"W	polygon
JOHNSONS CORNER EAST 1-N SECTION 33	5.00	336.28	1.94	3146750.76	1373645.13	40°21'28.300"N	104°58'24.280"W	polygon
JOHNSONS CORNER EAST 1-N SECTION 34	5.00	336.28	1.94	3146750.76	1373645.13	40°21'28.300"N	104°58'24.280"W	polygon
JOHNSONS CORNER EAST 1-N SECTION 35	5.00	336.28	1.94	3146750.76	1373645.13	40°21'28.300"N	104°58'24.280"W	polygon
JOHNSONS CORNER EAST 1-N SECTION 36	5.00	336.28	1.94	3146750.76	1373645.13	40°21'28.300"N	104°58'24.280"W	polygon
JOHNSONS CORNER 13-N BHL REV-1 (2613'FNL & 2193'FEL, SEC.33)	6467.00	-135.99	-10286.00	3136466.25	1373111.80	40°21'23.612"N	105°00'37.170"W	point
JOHNSONS CORNER 13-N BHL (2613'FNL & 2193'FEL, SEC.33)	6855.00	-135.99	-10286.00	3136466.25	1373111.80	40°21'23.612"N	105°00'37.170"W	point
JOHNSONS CORNER 13-N LP (2635'FNL & 2712'FWL, SEC.35)	6855.00	-191.66	-626.23	3146125.77	1373113.49	40°21'23.083"N	104°58'32.394"W	point
JOHNSONS CORNER 13-N LP REV-1 (2635'FNL & 2712'FWL, SEC.35)	6899.00	-191.66	-626.23	3146125.77	1373113.49	40°21'23.083"N	104°58'32.394"W	point
SECTION 31 HARDLINE (460'SETBACK)	7205.00	336.28	1.94	3146750.76	1373645.13	40°21'28.300"N	104°58'24.280"W	polygon
SECTION 33 HARDLINE (460'SETBACK)	7205.00	336.28	1.94	3146750.76	1373645.13	40°21'28.300"N	104°58'24.280"W	polygon



Actual Wellpath Report

JOHNSONS CORNER 13-N ST01 AWP

Page n of nn



REFERENCE WELLPATH IDENTIFICATION			
Operator	EXTRACTION OIL & GAS	Slot	SLOT#13 JOHNSONS CORNER 13-N (2444'FNL & 2458'FEL, SEC.35)
Area	COLORADO	Well	JOHNSONS CORNER 13-N
Field	LARIMER COUNTY (NAD83/TN)	Wellbore	JOHNSONS CORNER 13-N ST01 AWP
Facility	SEC.35-T05N-R68W	Sidetrack from	JOHNSONS CORNER 13-N AWP at 8204.00 MD

WELLPATH COMPOSITION - Ref Wellbore: JOHNSONS CORNER 13-N ST01 AWP Ref Wellpath: JOHNSONS CORNER 13-N ST01 AWP				
Start MD [ft]	End MD [ft]	Positional Uncertainty Model	Log Name/Comment	Wellbore
28.00	1541.00	ISCWSA MWD, Rev. 4 (Standard)	SURFACE SURVEYS PROVIDED BY EXTRACTION <128-1541>	JOHNSONS CORNER 13-N AWP
1541.00	8204.00	ISCWSA MWD, Rev. 4 (Standard)	THIRD PARTY SURVEYS 8.5" HOLE <1659-9528>	JOHNSONS CORNER 13-N AWP
8204.00	16621.00	ISCWSA MWD, Rev. 4 (Standard)	THIRD PARTY SURVEY 8.5" HOLE ST01 <8299-16621>	JOHNSONS CORNER 13-N ST01 AWP
16621.00	16780.00	Blind Drilling (std)	Projection to bit	JOHNSONS CORNER 13-N ST01 AWP



Actual Wellpath Report

JOHNSONS CORNER 13-N ST01 AWP
Page n of nn



REFERENCE WELLPATH IDENTIFICATION			
Operator	EXTRACTION OIL & GAS	Slot	SLOT#13 JOHNSONS CORNER 13-N (2444'FNL & 2458'FEL, SEC.35)
Area	COLORADO	Well	JOHNSONS CORNER 13-N
Field	LARIMER COUNTY (NAD83/TN)	Wellbore	JOHNSONS CORNER 13-N ST01 AWP
Facility	SEC.35-T05N-R68W	Sidetrack from	JOHNSONS CORNER 13-N AWP at 8204.00 MD

WELLPATH COMMENTS				
MD [ft]	Inclination [°]	Azimuth [°]	TVD [ft]	Comment
1541.00	4.750	197.200	1539.91	TIED ON TO SURFACE SURVEY
1659.00	4.200	200.020	1657.55	FIRST THIRD PARTY SURVEY
7447.00	89.880	271.580	6921.33	LANDING POINT (2641' FNL & 3365' FEL, SEC. 35)
8204.00	89.400	269.910	6913.52	TIED ON TO OWB
8299.00	87.410	269.690	6916.17	FIRST ST01 THIRD PARTY SURVEY
16621.00	89.400	269.690	6910.84	LAST ST01 THIRD PARTY SURVEY (2630' FNL & 1983' FEL, SEC. 33)
16780.00	89.400	269.690	6912.51	PROJECTION TO BIT ST01 (2631' FNL & 2142' FEL, SEC. 33)