



Kerr-McGee Oil & Gas Onshore LP

A subsidiary of Anadarko Petroleum Corporation

1099 18th Street
Denver, CO 80202
720-929-6000

April 16, 2019

Jeff Robbins
Director, Colorado Oil and Gas Conservation Commission
Department of Natural Resources
The Chancery Building
1120 Lincoln Street, Suite 801
Denver, CO 80203

Re: **30 Day Certification Letter - 318A.e**
REESE 21-7HZ (API #05-123-47868)
Township 2 North, Range 67 West
Section 21: SWNW
Unit Acreage: 320 Acres
Proposed Spacing Unit:
02N67W SEC 09: SESW;
02N67W SEC 16: E2W2;
02N67W SEC 21: NESW, E2NW
Weld County, Colorado

Dear Director Robbins:

Kerr-McGee Oil and Gas Onshore LP ("KMG") hereby certifies that a thirty (30) day notice has been given by certified mail to all mineral owners in the proposed wellbore spacing unit. We have not received any objections to this spacing unit or location. KMG hereby respectfully requests approval of this well.

If you have any questions or issues regarding this permit, please contact me at (720) 929-6092.

Sincerely,

Kerr-McGee Oil and Gas Onshore LP

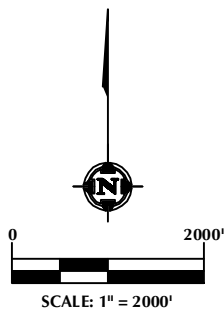
A handwritten signature in blue ink that reads 'Cheryl Light'.

Cheryl Light
Staff Regulatory Analyst

Enclosure

DISTANCE FROM COMPLETED
PORTION OF WELLBORE TO
NEAREST UNIT BOUNDARY= 732'

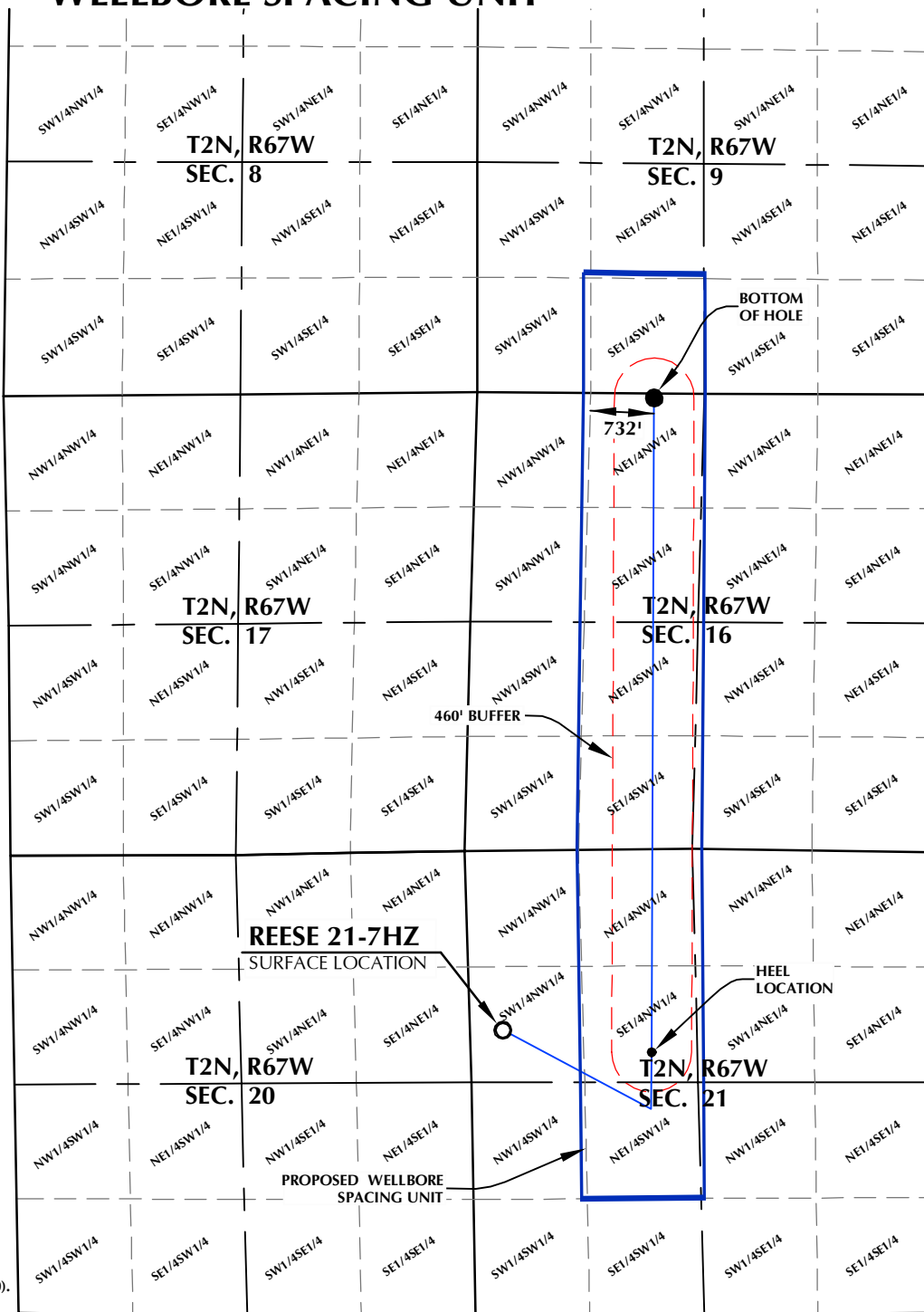
REESE 21-7HZ WELLBORE SPACING UNIT



SURFACE LOCATION: NAD 83
GROUND ELEVATION= 4996.2'
LATITUDE= 40.125498°
LONGITUDE= -104.903764°
LATITUDE= 40°07'31.792"
LONGITUDE= -104°54'13.551"
HEEL LOCATION: NAD 83
LATITUDE= 40.124772°
LONGITUDE= -104.897650°
LATITUDE= 40°07'29.181"
LONGITUDE= -104°53'51.539"
BOTTOM HOLE LOCATION: NAD 83
LATITUDE= 40.145431°
LONGITUDE= -104.897360°
LATITUDE= 40°08'43.552"
LONGITUDE= -104°53'50.496"

NOTES:

1. DRAWING LATITUDE AND LONGITUDE COORDINATES ARE NAD 83 (2011)(EPOCH:2010).
2. ELEVATION BASED ON NAVD88 (GEOID12B).
3. BASIS OF BEARING DERIVED FROM COLORADO COORDINATE SYSTEM OF 1983 NORTH ZONE.
4. ALL MEASURED DISTANCES ARE GRID.
COMBINED SCALE FACTOR: .99972306
CALCULATED FROM THE N. 1/4 CORNER OF SECTION 21, T2N, R67W.



WELL PAD - REESE 22-21HZ

REESE 21-7HZ
WELLBORE SPACING UNIT
2065' FNL & 382' FWL SWNW (SURFACE)
2334' FNL & 2085' FWL SENW (HEEL)
LOCATED IN SECTION 21
52' FNL & 2037' FWL NENW (BOTTOM)
LOCATED IN SECTION 16
T2N, R67W, 6TH P.M.
WELD COUNTY, COLORADO

**Kerr-McGee Oil &
Gas Onshore L.P.**
1099 18th Street
Denver, Colorado 80202



CONSULTING, LLC

SHERIDAN OFFICE 1095 Saberton Avenue
Sheridan, Wyoming 82801
Phone 307-674-0609
LOVELAND OFFICE 1635 Foxtrail Drive, Suite 204
Loveland, Colorado 80538
Phone 970-776-4331

DRAFTED BY:	LMO	CHECKED BY:	RKF
DATE DRAFTED:	1/31/18	DATE SURVEYED:	11/17/17
REVISED:		FILE NAME:	13-89