

# Inspection Photos

4/12/2019

Operator: D90 ENERGY LLC # 10706

Location ID: 451812

Inspection Doc. Number: 682504729

Lincoln County, CO

Aaron Trujillo  
NE Reclamation Specialist  
COGCC



**Photo 1:** Photo taken from the northwest corner of the disturbance area, facing south. Photo shows construction in process. Photo also shows operator has installed two (2) separate rows of surface roughening along perimeter of the location.





**Photo 2:** Photo taken from the northwest corner of the disturbance area, facing southeast. Photo shows construction in process. Photo also shows operator has installed two (2) separate rows of surface roughening along perimeter of the location.





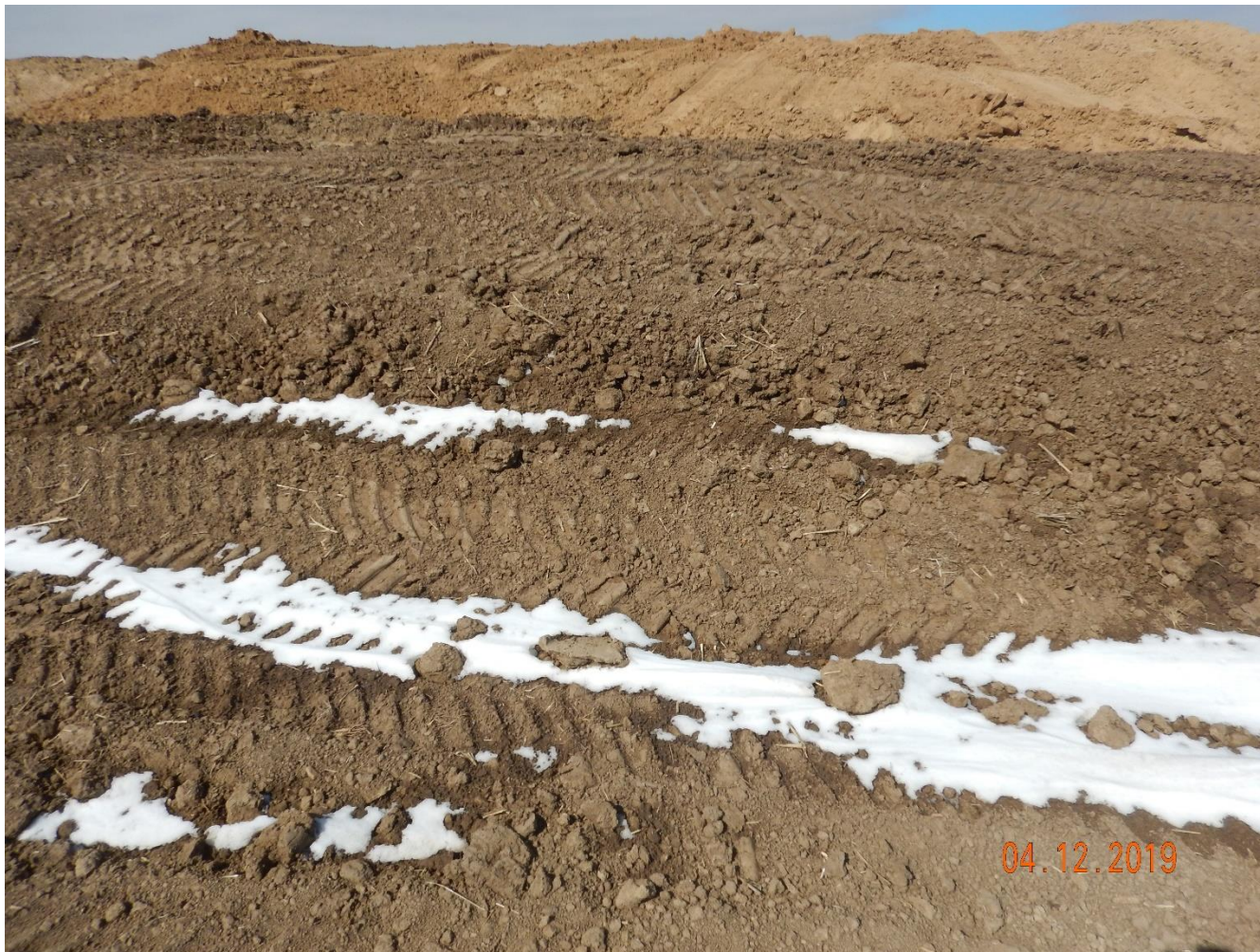
**Photo 3:** Photo taken from the northwest corner of the disturbance area, facing south. Photo shows construction in process. Photo also shows operator has installed two (2) separate rows of surface roughening along perimeter of the location.





**Photo 4:** Photos taken from the northwest corner of the disturbance area, facing south. Photo shows area of the location where surface roughening has been installed with the slope, rather than along the contour of the slopes. This is not good engineering practices.





**Photo 5:** Photos taken from the topsoil berm on the east end of the location. Photo shows tracking has not been installed perpendicular to the slope. This is not good engineering practices. Additionally, due to evident vehicle use on berm, compaction concerns are becoming evident.