

T5N, R61W, 6th P.M.

HIGHPOINT OPERATING CORPORATION

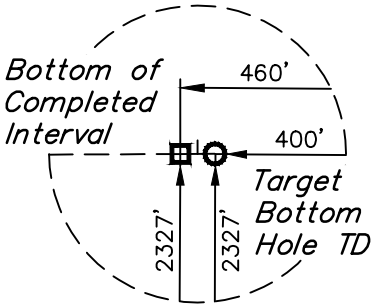
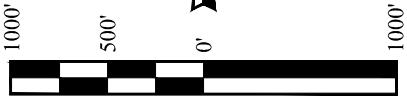
ANSCHUTZ EQUUS FARMS FED 5-61-34 NESE PAD

#5-61-35-3340B

NE 1/4 SE 1/4, SECTION 34, T5N, R61W, 6th P.M.  
WELD COUNTY, COLORADO

BASIS OF BEARINGS  
BASIS OF ELEVATION

SPOT ELEVATION LOCATED AT THE NORTHEAST CORNER OF SECTION 24, T5N, R62W, 6th P.M. TAKEN FROM THE POINT OF ROCKS, QUADRANGLE, COLORADO, WELD COUNTY, 7.5 MINUTE QUAD (TOPOGRAPHIC MAP) PUBLISHED BY THE UNITED STATES DEPARTMENT OF THE INTERIOR, GEOLOGICAL SURVEY. SAID ELEVATION IS MARKED AS BEING 4530 FEET.



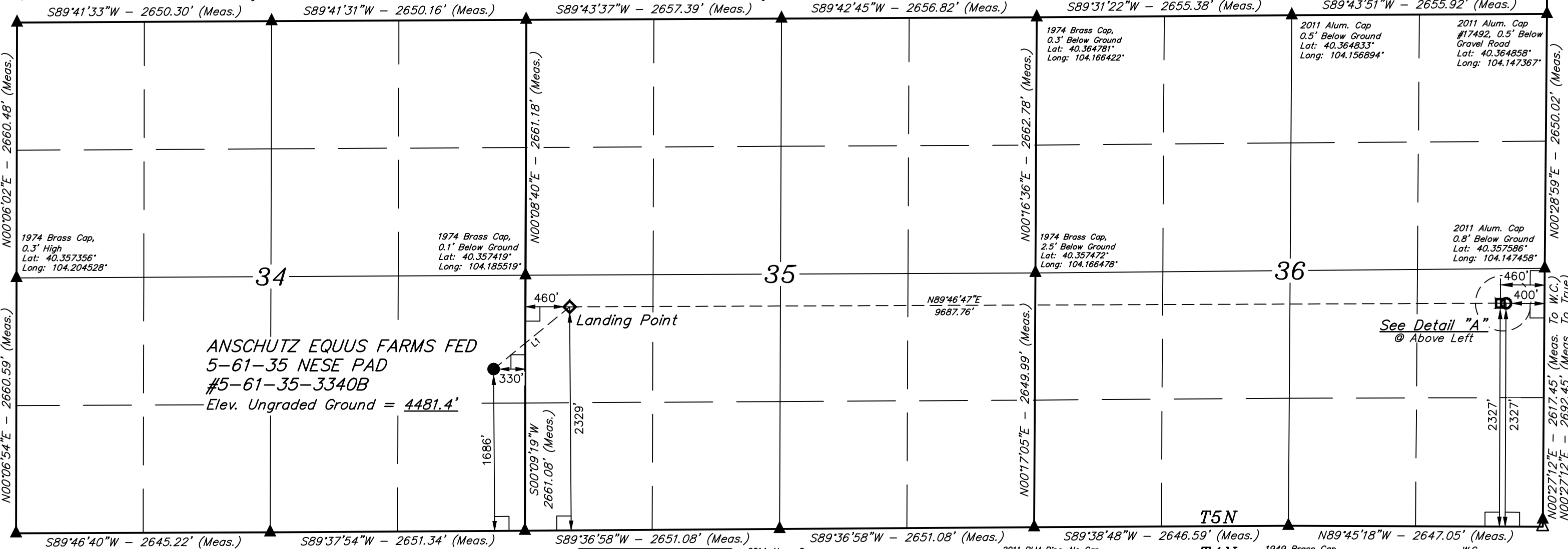
2011 Alum. Cap,  
0.4' Below Ground  
Lat: 40.364656°  
Long: 104.204503°

Detail "A"  
No Scale

2013 Alum. Cap,  
#38050, 0.4'  
Below Ground  
Lat: 40.364689°  
Long: 104.194994°

Brass Cap,  
#7242, 1.5'  
Below Ground  
Lat: 40.364722°  
Long: 104.185489°

1974 Brass Cap,  
0.5' Below Ground  
Lat: 40.364750°  
Long: 104.175953°



1949 Brass Cap,  
0.2' High  
Lat: 40.350053°  
Long: 104.204553°

1949 Brass Cap,  
0.3' High  
Lat: 40.350075°  
Long: 104.195064°

1949 Brass Cap,  
Flush W/ Ground  
Lat: 40.350117°  
Long: 104.185553°

2014 Alum. Cap,  
#28285, 0.8'  
Below Ground  
Lat: 40.350158°  
Long: 104.176044°

2011 BLM Pipe, No Cap,  
with UELS Alum. Cap,  
0.5' Below Ground  
Lat: 40.350200°  
Long: 104.166536°

1949 Brass Cap,  
0.2' Below Ground  
Lat: 40.350236°  
Long: 104.157042°

W.C.  
2008 Alum. Cap,  
#37897  
Lat: 40.350403°  
Long: 104.147544°



THIS IS TO CERTIFY THAT THE ABOVE PLAT WAS PREPARED FROM FIELD NOTES OF ACTUAL SURVEYS MADE BY ME OR UNDER MY SUPERVISION, AND THAT THE SAME ARE TRUE AND CORRECT TO THE BEST OF MY KNOWLEDGE AND BELIEF.

LEGEND:

- = 90° SYMBOL
- = PROPOSED WELLHEAD.
- = LANDING POINT.
- = BOTTOM OF COMPLETED INTERVAL.
- = TARGET BOTTOM HOLE TD.
- = SECTION CORNERS LOCATED. (NAD 83)
- = SECTION CORNERS RE-ESTABLISHED. (Not Set on Ground.) (NAD 83)

LINE TABLE		
LINE	DIRECTION	LENGTH
L1	N50°40'48"E	1023.48'
L2	S89°45'18"E	60.00'

PDOP = 1.6

NAD 83 (SURFACE LOCATION)	NAD 83 (LANDING POINT)	NAD 83 (BTM OF COMPLETED INT.)	NAD 83 (TARGET BOTTOM HOLE)
LATITUDE = 40°21'17.06" (40.354738)	LATITUDE = 40°21'23.46" (40.356516)	LATITUDE = 40°21'23.72" (40.356590)	LATITUDE = 40°21'23.72" (40.356589)
LONGITUDE = 104°11'12.18" (104.186716)	LONGITUDE = 104°11'01.95" (104.183874)	LONGITUDE = 104°08'56.84" (104.149121)	LONGITUDE = 104°08'56.06" (104.148906)
NAD 27 (SURFACE LOCATION)	NAD 27 (LANDING POINT)	NAD 27 (BTM OF COMPLETED INT.)	NAD 27 (TARGET BOTTOM HOLE)
LATITUDE = 40°21'17.12" (40.354756)	LATITUDE = 40°21'23.52" (40.356534)	LATITUDE = 40°21'23.79" (40.356608)	LATITUDE = 40°21'23.78" (40.356607)
LONGITUDE = 104°11'10.36" (104.186211)	LONGITUDE = 104°11'00.13" (104.183368)	LONGITUDE = 104°08'55.02" (104.148615)	LONGITUDE = 104°08'54.24" (104.148400)
STATE PLANE NAD 83 (CO. NORTH)	STATE PLANE NAD 83 (CO. NORTH)	STATE PLANE NAD 83 (CO. NORTH)	STATE PLANE NAD 83 (CO. NORTH)
N: 1374782.02 E: 3365993.90	N: 1375441.37 E: 3366776.34	N: 1375613.84 E: 3376460.03	N: 1375614.42 E: 3376520.02
STATE PLANE NAD 27 (CO. NORTH)	STATE PLANE NAD 27 (CO. NORTH)	STATE PLANE NAD 27 (CO. NORTH)	STATE PLANE NAD 27 (CO. NORTH)
N: 374784.02 E: 2366144.48	N: 375443.35 E: 2366926.95	N: 375615.78 E: 2376610.90	N: 375616.36 E: 2376670.88



UELS, LLC  
Corporate Office \* 85 South 200 East  
Vernal, UT 84078 \* (435) 789-1017

SURVEYED BY	JAMES FRESHWATER, N.W.	09-17-18	SCALE
DRAWN BY	K.B.	09-20-18	1" = 1000'

WELL LOCATION PLAT