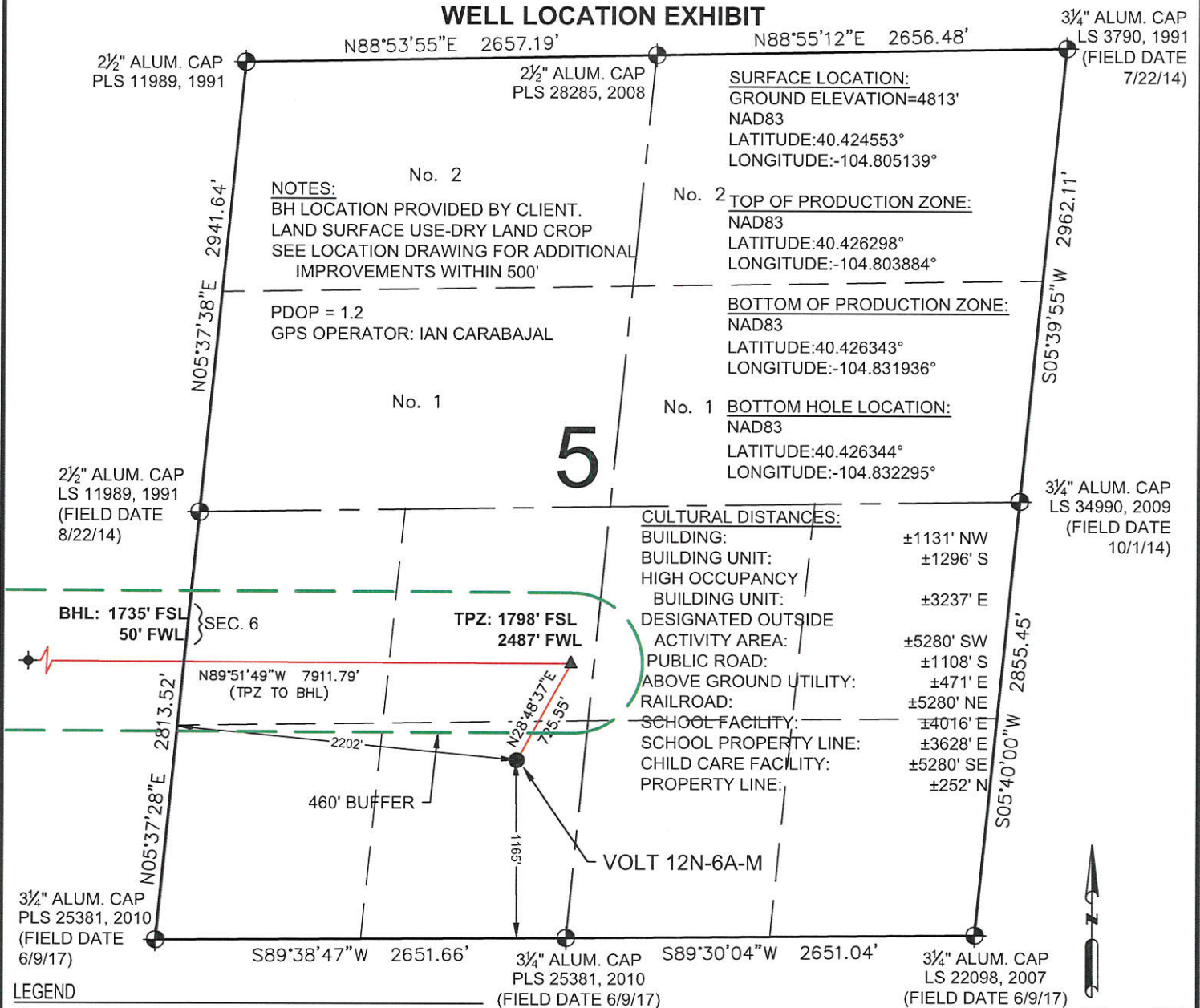


VOLT 12N-6A-M WELL LOCATION EXHIBIT



LEGEND

- = EXISTING MONUMENT
- = CALCULATED POSITION
- = PROPOSED WELL
- ◆ = EXISTING WELL
- ◆ = BOTTOM HOLE
- △ = BOTTOM OF PRODUCTION ZONE
- ▲ = TOP OF PRODUCTION ZONE
- TPZ = TOP OF PRODUCTION ZONE
- BHL = BOTTOM HOLE LOCATION
- BPZ = BOTTOM OF PRODUCTION ZONE

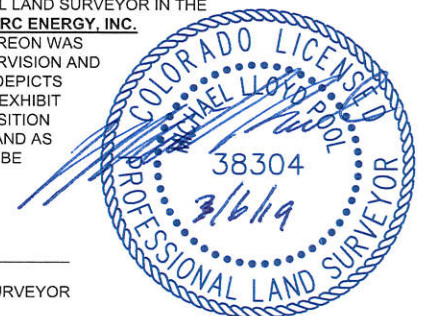
NOTES:

- THIS FIELD SURVEY CONFORMS TO THE MINIMUM STANDARDS SET BY THE C.O.G.C.C., RULE NO. 215
- ALL DISTANCES AND BEARINGS SHOWN HEREON ARE GROUND VALUES AS GPS MEASURED IN THE FIELD, WITH TIES TO WELLS MEASURED PERPENDICULAR TO LINES SHOWN HEREON. THIS LOW DISTORTION PROJECTION (LDP) IS BASED ON THE NORTH AMERICAN DATUM OF 1983, U.S. SURVEY FOOT WITH A LATITUDE ORIGIN OF 40.392315°N, A CENTRAL MERIDIAN LONGITUDE OF 104.794248°W, AND A SCALE FACTOR ON THE CENTRAL MERIDIAN OF 1.000228 (EXACT). THE LDP BASIS OF BEARINGS IS GEODETIC NORTH.
- FIELD VERIFICATION OF MONUMENTS COMPLETED WITHIN 1 YEAR OF SIGNATURE DATE, UNLESS OTHERWISE NOTED.



NOTICE: ACCORDING TO COLORADO LAW YOU MUST COMMENCE ANY LEGAL ACTION BASED UPON ANY DEFECT IN THIS SURVEY WITHIN THREE YEARS AFTER YOU FIRST DISCOVER SUCH DEFECT. IN NO EVENT MAY ANY ACTION BASED UPON ANY DEFECT IN THIS SURVEY BE COMMENCED MORE THAN TEN YEARS FROM THIS SAID DATE OF THIS CERTIFICATION SHOWN HEREON.

I, MICHAEL L. POOL, A LICENSED PROFESSIONAL LAND SURVEYOR IN THE STATE OF COLORADO, DO HEREBY STATE TO **SRC ENERGY, INC.** THAT THE WELL LOCATION EXHIBIT SHOWN HEREON WAS PREPARED BY ME OR UNDER MY DIRECT SUPERVISION AND THE DRAWING SHOWN HEREON ACCURATELY DEPICTS THE PROPOSED LOCATION OF THE WELL. THIS EXHIBIT MEETS THE REQUIREMENTS OF A GIS LAND POSITION AS DEFINED BY SECTION 38-51-102 (7.5) C.R.S. AND AS SUCH PER SECTION 38-51-109.3 C.R.S. CANNOT BE RELIED UPON TO DETERMINE OWNERSHIP.

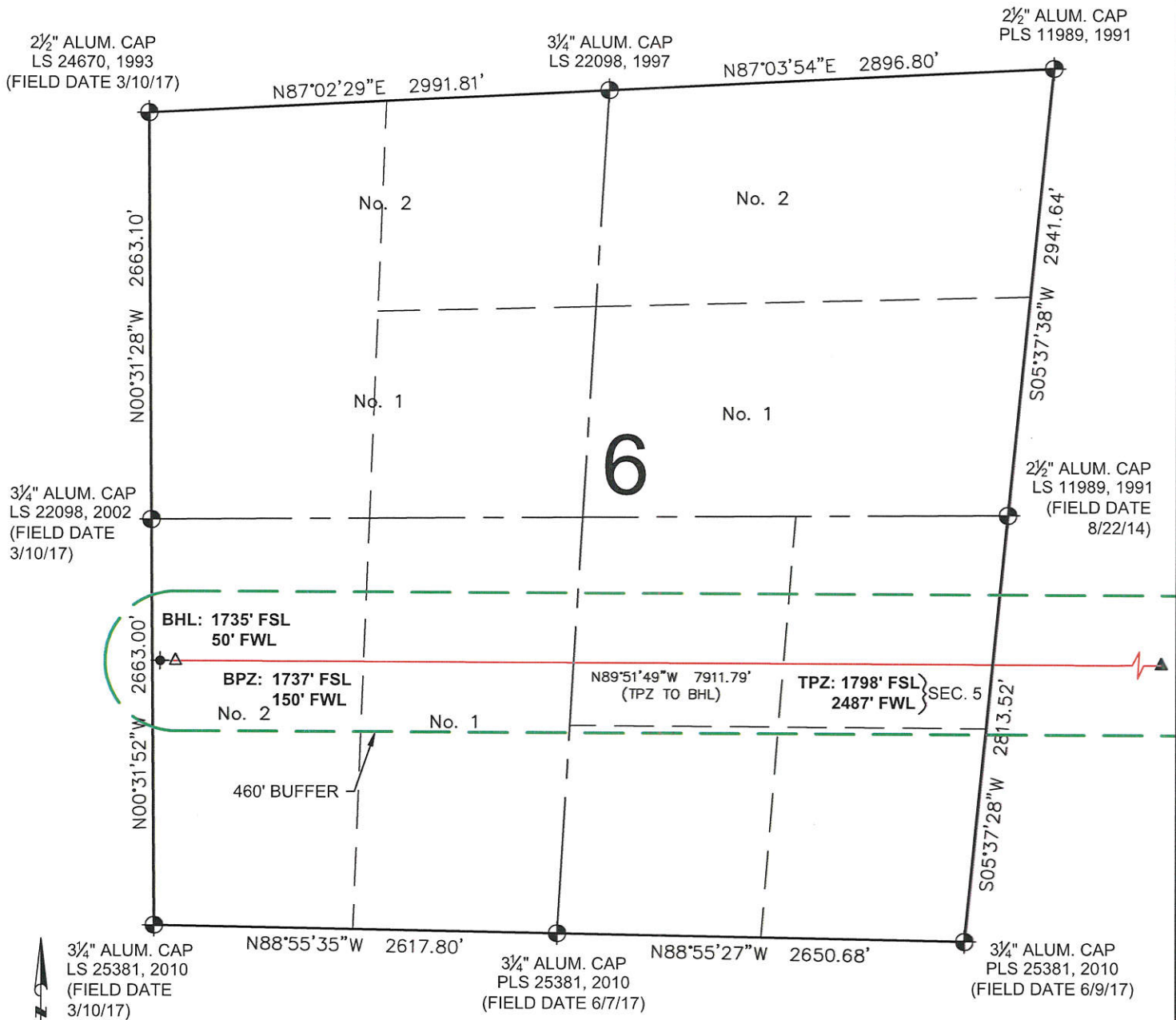
MICHAEL L. POOL, PLS 38304
COLORADO LICENSED PROFESSIONAL LAND SURVEYOR
FOR AND ON BEHALF OF P.F.S., LLC
d.b.a. ASCENT GEOMATICS SOLUTIONS



SHEET 1 OF 2

| | | | |
|---|---|--|--|
|  <p>7535 Hilltop Circle Denver, CO 80221 (303) 928-7128 www.ascentgeomatics.com</p> | <p>FIELD DATE: 05-04-18</p> <p>DRAWING DATE: 03-05-19</p> <p>BY: MJW</p> <p>CHECKED BY: IJM</p> | <p>WELL NAME: VOLT 12N-6A-M</p> <p>SURFACE LOCATION: SE 1/4 SW 1/4 SEC. 5, T5N, R66W, 6TH P.M. WELD COUNTY, COLORADO</p> | <p>PREPARED FOR:</p>  <p>SRC ENERGY</p> |
|---|---|--|--|

VOLT 12N-6A-M WELL LOCATION EXHIBIT



SCALE: 1"= 1000'

LEGEND

- ⊙ = EXISTING MONUMENT
- = CALCULATED POSITION
- = PROPOSED WELL
- ◆ = EXISTING WELL
- ⬢ = BOTTOM HOLE
- △ = BOTTOM OF PRODUCTION ZONE
- ▲ = TOP OF PRODUCTION ZONE
- TPZ = TOP OF PRODUCTION ZONE
- BHL = BOTTOM HOLE LOCATION
- BPZ = BOTTOM OF PRODUCTION ZONE

MICHAEL L. POOL, PLS 38304
COLORADO LICENSED PROFESSIONAL LAND SURVEYOR
FOR AND ON BEHALF OF P.F.S., LLC
d.b.a. ASCENT GEOMATICS SOLUTIONS



SHEET 2 OF 2



FIELD DATE:
05-04-18

DRAWING DATE:
03-05-19

BY:
MJW

CHECKED BY:
IJM

WELL NAME:
VOLT 12N-6A-M

SURFACE LOCATION:
SE 1/4 SW 1/4 SEC. 5, T5N, R66W, 6TH P.M.
WELD COUNTY, COLORADO

