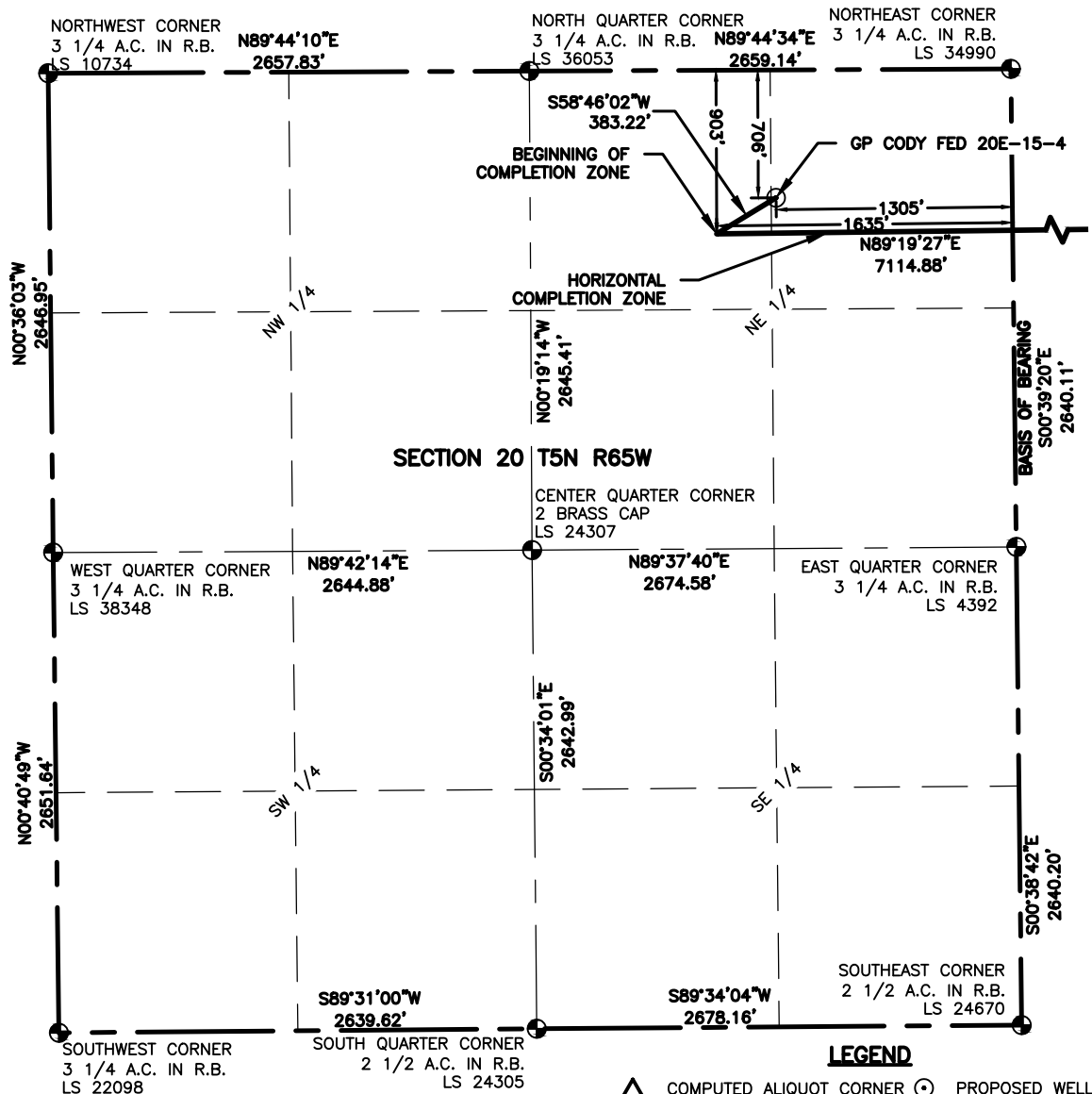


### WELL LOCATION DATA:

LATITUDE: 40.38992°N  
LONGITUDE: 104.68251°W  
ELEVATION: 4673'  
PDOP: 1.7  
OPERATOR: C HOLMES  
SURFACE USE: INDUSTRIAL



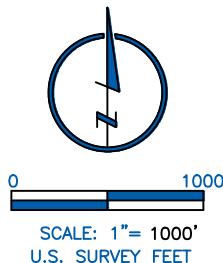
### LAND SURVEYOR'S CERTIFICATION

LAMP, RYNEARSON & ASSOCIATES, INC., OF FT. COLLINS, COLORADO HAS, IN ACCORDANCE WITH A REQUEST FROM TROY OWENS AT EXTRACTION, DETERMINED THE SURFACE LOCATION OF THE WELL DESIGNATED AS GP CODY FED 20E-15-4 TO BE 706' FROM THE NORTH LINE AND 1305' FROM THE EAST LINE OF SECTION 20, TOWNSHIP 5 NORTH, RANGE 65 WEST OF THE 6TH P.M., WELD COUNTY, COLORADO.



*Laine A. Landau*

LAINE A. LANDAU COLORADO PLS 31159  
DATE OF SURVEY: 3/22/2018 (SECTION CONTROL)  
DATE OF SURVEY: 08/23/2013 (WELL LOCATION)



SCALE: 1" = 1000'  
U.S. SURVEY FEET

- LEGEND**
- △ COMPUTED ALIQUOT CORNER
  - ⊙ PROPOSED WELL
  - ALIQUOT CORNER
  - ⊕ A.C. ALUMINUM CAP
  - ⊖ BOTTOM HOLE
  - ⊖ R.B. RANGE BOX

### NOTES:

- DISTANCES ARE MEASURED PERPENDICULAR TO NEAREST SECTION LINE AND ARE SHOWN ON THE SAME SIDE OF THE SECTION LINE WHERE THE WELL IS LOCATED.
- THIS MAP DOES NOT REPRESENT A MONUMENTED BOUNDARY SURVEY. SIXTEENTH CORNER LOCATIONS ARE COMPUTED, UNLESS OTHERWISE NOTED.
- BOTTOM HOLE LOCATIONS AND HORIZONTAL COMPLETION ZONE PROVIDED BY OTHERS.

### BASIS OF BEARING:

THE EAST LINE OF THE NORTHEAST QUARTER OF SECTION 20-T5N-R65W BEARS S00°39'20"E FOR 2640.11 FT BETWEEN THE NORTHEAST CORNER OF SECTION 20 MONUMENTED WITH 3 1/4" A.C. IN R.B. STAMPED "LS 34990" AND THE EAST QUARTER CORNER OF SECTION 20 MONUMENTED WITH 3 1/4" A.C. IN R.B. STAMPED "LS 4392" BASED ON THE COLORADO NORTH 0501 STATE PLANE COORDINATE SYSTEM.

ELEVATIONS ARE BASED ON NAVD 88, AS OBSERVED FROM GPS OBSERVATIONS

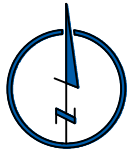
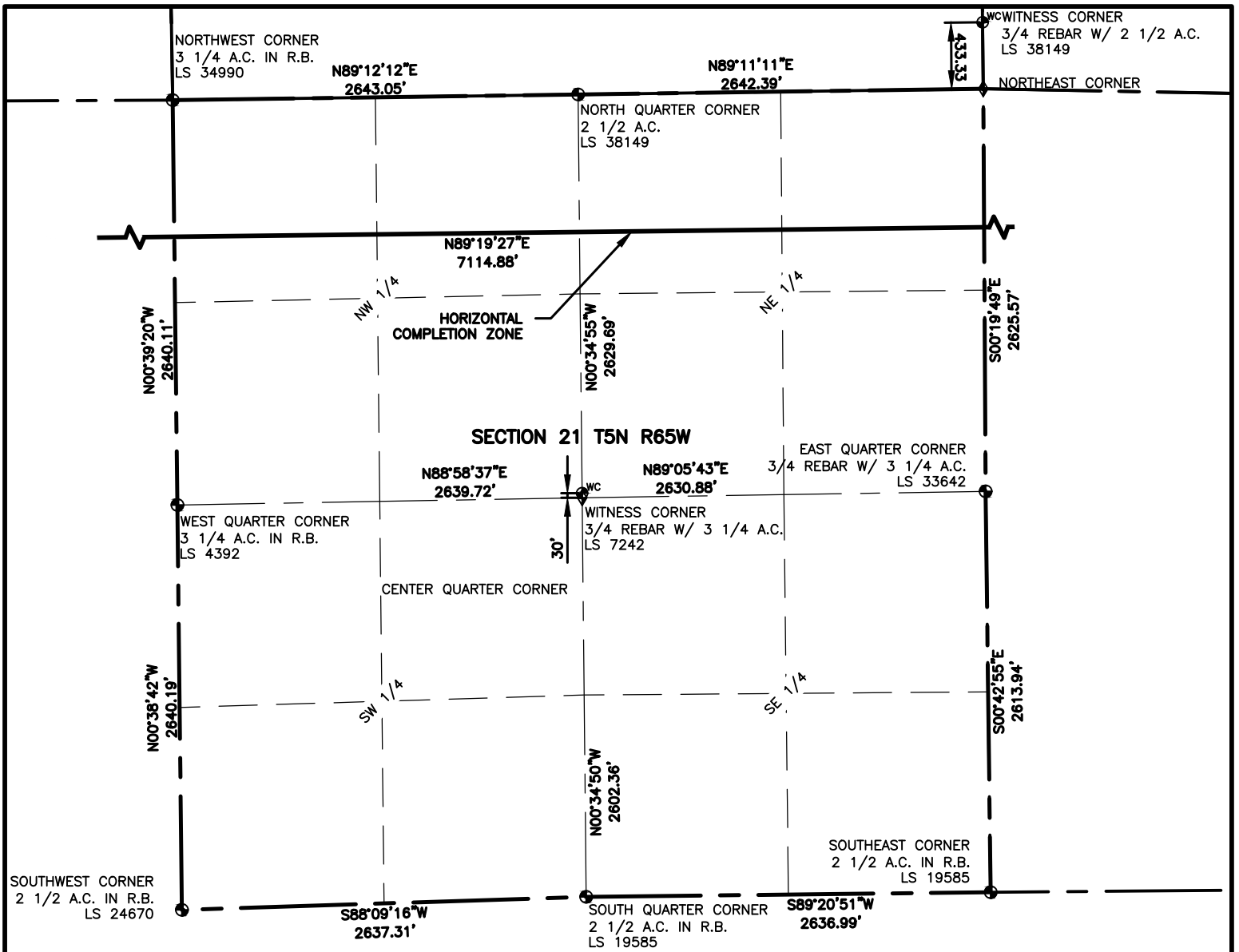


**LAMP RYNEARSON**  
& ASSOCIATES

4715 Innovation Drive 970.226.0342 | P  
Fort Collins, CO 80525 970.226.0879 | F  
www.LRA-inc.com

PROPOSED WELL LOCATION EXHIBIT  
GP CODY FED 20E-15-4  
1 OF 3

DRAWN BY	DATE	COGCC ID	PROJECT - TASK NUMBER	BOOK AND PAGE	SURFACE - LOCATION
JMC	4/2/19	332837	0213001.01	MR01/MR02	NE/4,NE/4, SEC20, T5N, R65W
PATH/FILENAME	I:\engineering\0218001.01 xog - greeley directional gp (1) SURVEY DRAWINGS\EXHIBITS\GP - EAST 4.dwg				



0 1000

SCALE: 1"= 1000'  
U.S. SURVEY FEET



**LAMP RYNEARSON**  
& ASSOCIATES

4715 Innovation Drive 970.226.0342 | P  
Fort Collins, CO 80525 970.226.0879 | F  
www.LRA-inc.com

PROPOSED WELL LOCATION EXHIBIT  
GP CODY FED 20E-15-4  
2 OF 3

**DRAWN BY**  
JMC  
**PATH/FILENAME**

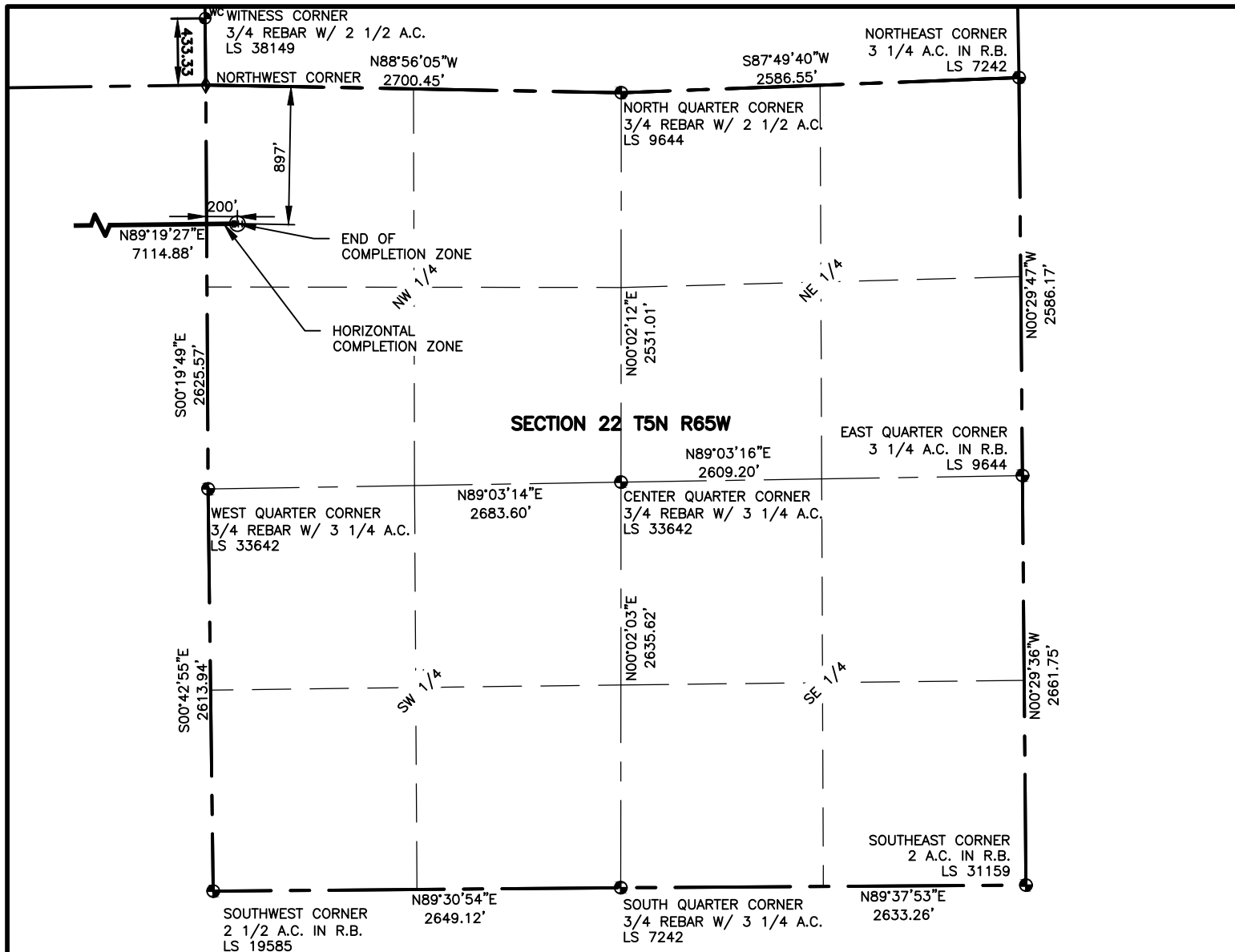
**DATE**  
4/2/19

**COGCC ID**  
332837

**PROJECT - TASK NUMBER**  
0213001.01  
I:\engineering\0218001.01 xog - greeley directional gp

**BOOK AND PAGE**  
MR01/MR02

**SURFACE - LOCATION**  
NE/4, NE/4, SEC20, T5N, R65W



0 1000

SCALE: 1" = 1000'  
U.S. SURVEY FEET



**LAMP RYNEARSON**  
& ASSOCIATES

4715 Innovation Drive 970.226.0342 | P  
Fort Collins, CO 80525 970.226.0879 | F  
www.LRA-inc.com

PROPOSED WELL LOCATION EXHIBIT  
GP CODY FED 20E-15-4  
3 OF 3

**DRAWN BY**  
JMC  
**PATH/FILENAME**

**DATE**  
4/2/19

**COGCC ID**  
332837

**PROJECT - TASK NUMBER**  
0213001.01  
I:\engineering\0218001.01 xog - greeley directional gp  
(1) SURVEY DRAWINGS\EXHIBITS\GP - EAST 40.dwg

**BOOK AND PAGE**  
MR01/MR02

**SURFACE - LOCATION**  
NE/4,NE/4, SEC20, T5N, R65W