



April 1, 2019

Mr. Jeff Robbins, Acting Director  
Colorado Oil & Gas Conservation Commission  
1120 Lincoln Street, Ste. 801  
Denver, Colorado 80203

RE: Rule 318.A.e.

GP Cody Fed 20E-15-4 and GP Cody Fed 20E-15-5 wells ("wells") Horizontal Drill Proposal  
Surface location: NENE Section 20, Township 5 North, Range 65 West Weld County, CO

Dear Acting Director Mr. Robbins,

Extraction Oil and Gas, Inc. (Extraction) is planning to drill the captioned horizontal wells in accordance with the provision of COGCC Rule 318A.e.

The wellbore spacing unit will be 560 acres, comprised of Section 20: NE/4, Section 21: N/2, Section 22: W/2NW/4, Township 5 North, Range 65 West, 6<sup>th</sup> P.M.

The subject wells are planned to drill and test the viability of the Niobrara formation. The wellbore spacing unit is depicted on the enclosed spacing unit exhibit.

Extraction hereby certifies to the Acting Director that all Owners within the proposed spacing unit above were notified and 30 days have passed. Extraction received an objection from PDC and has worked out an agreement that works best for both companies to develop the minerals in the best way possible.

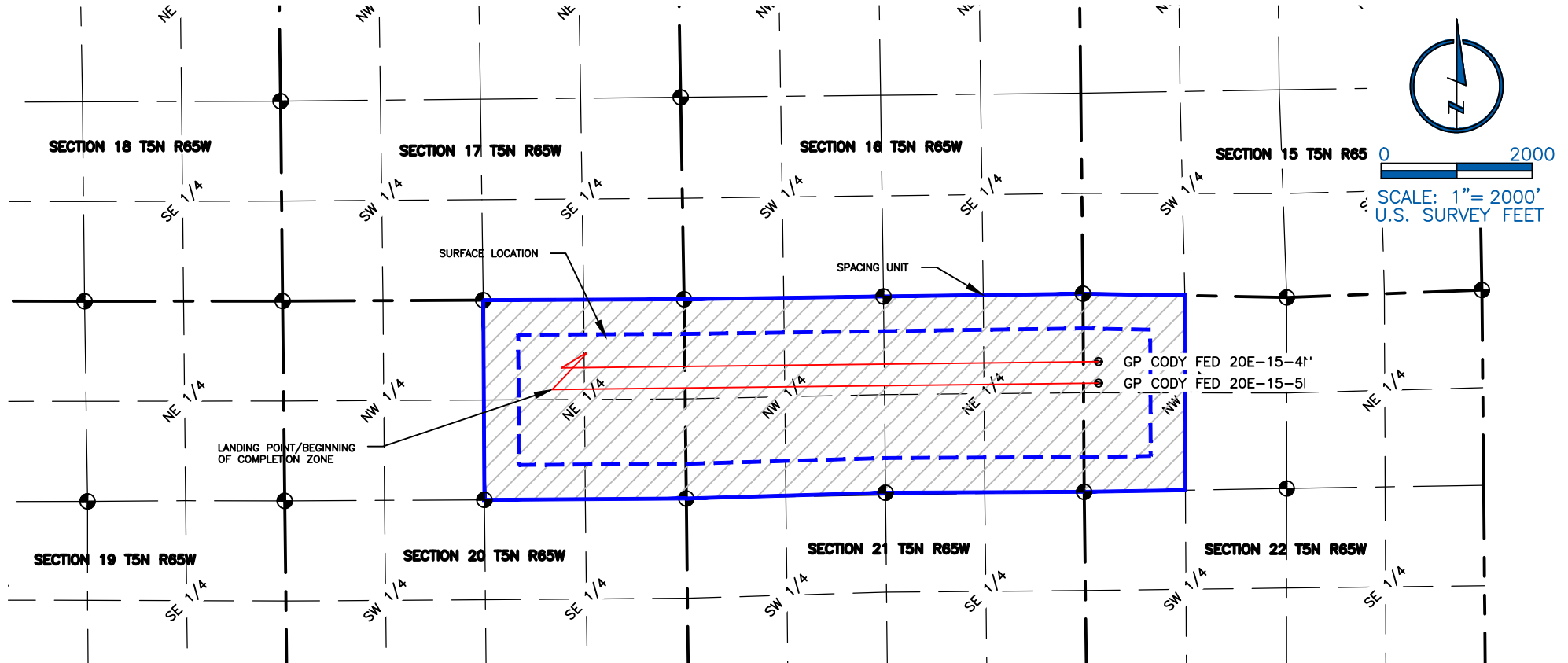
Sincerely,

A handwritten signature in blue ink, appearing to read "B. Lamond", is written over a light blue horizontal line.

Bonnie Lamond  
Extraction Oil & Gas, Inc.

NAME: GP CODY FED 41 & 51  
 SPACING UNIT: SEC 20: NE/4; T5N, SEC 21: N/2 SEC 21; SEC 22: W/2NW/4, T5N, R65W,  
 UNIT ACREAGE: 560

WELL NAME	SURFACE LOCATION				BEGIN HORIZONTAL COMPLETION ZONE				END HORIZONTAL COMPLETION ZONE				COMPLETION ZONE BEARING	COMPLETION ZONE LENGTH
	DIST.	DIR.	DIST.	DIR.	DIST.	DIR.	DIST.	DIR.	DIST.	DIR.	DIST.	DIR.		
GP CODY FED 20E-15-41	706	FNL	1305	FEL	903	FNL	1635	FEL	897	FNL	200	FWL	S89°19'27"E	7114.88'
GP CODY FED 20E-15-51	718	FNL	1305	FEL	1189	FNL	1759	FEL	1182	FNL	200	FWL	S89°19'27"E	7237.45



**LAMP RYNEARSON**  
 & ASSOCIATES

4715 Innovation Drive 970.226.0342 | P  
 Fort Collins, CO 80525 970.226.0879 | F  
[www.LRA-Inc.com](http://www.LRA-Inc.com)

Proposed Spacing Unit Exhibit  
 Greeley Directional Project  
 GP Cody Fed

LEGEND	
ALLOT CORNER	COMPUTED ALLOT CORNER FROM MONUMENT RECORDS
BOTTOM HOLE	COMPUTED FROM GLO RECORDS
COMPUTED ALLOT CORNER	
CORNER	
SECTION LINE	
QUARTER SECTION LINE	
SIXTEENTH LINE	

DRAWN BY  
 CPG

DATE  
 4/9/2018

COGCC ID  
 332837

PROJECT - TASK NUMBER  
 0213001.01

BOOK AND PAGE  
 MR01/MR02

SURFACE - LOCATION  
 NE/4, NE/4, SEC20, T5N, R65W

PATH/FILENAME

L:\Engineering\0218001.01 XOG - Greeley Directional GP  
 GP - SURVEY DRAWINGS\EXHIBITS\Planned Spacing Units\0213001 - 01R65W - GP - EAST - 4.dwg