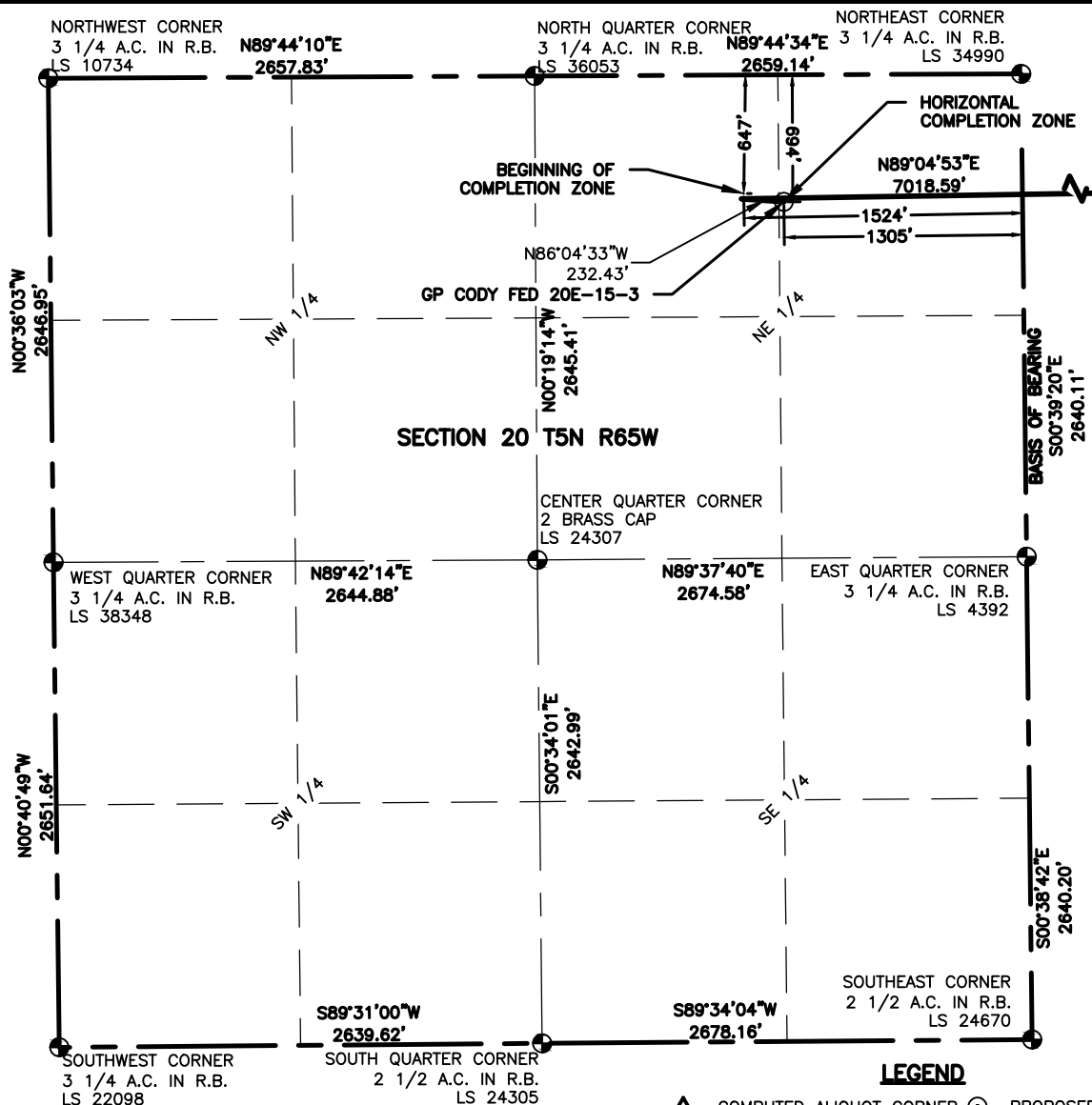


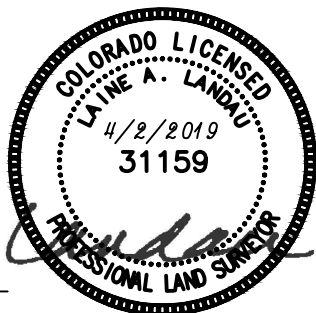
WELL LOCATION DATA:

LATITUDE: 40.38996°N
LONGITUDE: 104.68251°W
ELEVATION: 4673'
PDOP: 1.7
OPERATOR: C HOLMES
SURFACE USE: INDUSTRIAL



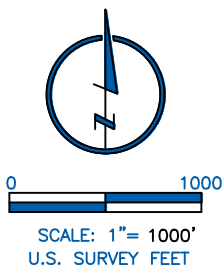
LAND SURVEYOR'S CERTIFICATION

LAMP, RYNEARSON & ASSOCIATES, INC., OF FT. COLLINS, COLORADO HAS, IN ACCORDANCE WITH A REQUEST FROM TROY OWENS AT EXTRACTION, DETERMINED THE SURFACE LOCATION OF THE WELL DESIGNATED AS GP CODY FED 20E-15-3 TO BE 694' FROM THE NORTH LINE AND 1305' FROM THE EAST LINE OF SECTION 20, TOWNSHIP 5 NORTH, RANGE 65 WEST OF THE 6TH P.M., WELD COUNTY, COLORADO.



Laine A. Landau

LAINE A. LANDAU COLORADO PLS 31159
DATE OF SURVEY: 3/22/2018 (SECTION CONTROL)
DATE OF SURVEY: 08/23/2013 (WELL LOCATION)



SCALE: 1" = 1000'
U.S. SURVEY FEET

- LEGEND**
- △ COMPUTED ALIQUOT CORNER
 - ⊙ PROPOSED WELL
 - ALIQUOT CORNER
 - A.C. ALUMINUM CAP
 - ⊕ BOTTOM HOLE
 - R.B. RANGE BOX

NOTES:

- DISTANCES ARE MEASURED PERPENDICULAR TO NEAREST SECTION LINE AND ARE SHOWN ON THE SAME SIDE OF THE SECTION LINE WHERE THE WELL IS LOCATED.
- THIS MAP DOES NOT REPRESENT A MONUMENTED BOUNDARY SURVEY. SIXTEENTH CORNER LOCATIONS ARE COMPUTED, UNLESS OTHERWISE NOTED.
- BOTTOM HOLE LOCATIONS AND HORIZONTAL COMPLETION ZONE PROVIDED BY OTHERS.

BASIS OF BEARING:

THE EAST LINE OF THE NORTHEAST QUARTER OF SECTION 20-T5N-R65W BEARS S00°39'20"E FOR 2640.11 FT BETWEEN THE NORTHEAST CORNER OF SECTION 20 MONUMENTED WITH 3 1/4" A.C. IN R.B. STAMPED "LS 34990" AND THE EAST QUARTER CORNER OF SECTION 20 MONUMENTED WITH 3 1/4" A.C. IN R.B. STAMPED "LS 4392" BASED ON THE COLORADO NORTH 0501 STATE PLANE COORDINATE SYSTEM.

ELEVATIONS ARE BASED ON NAVD 88, AS OBSERVED FROM GPS OBSERVATIONS



LAMP RYNEARSON
& ASSOCIATES

4715 Innovation Drive 970.226.0342 | P
Fort Collins, CO 80525 970.226.0879 | F
www.LRA-inc.com

PROPOSED WELL LOCATION EXHIBIT
GP CODY FED 20E-15-3
1 OF 3

DRAWN BY
JMC
PATH/FILENAME

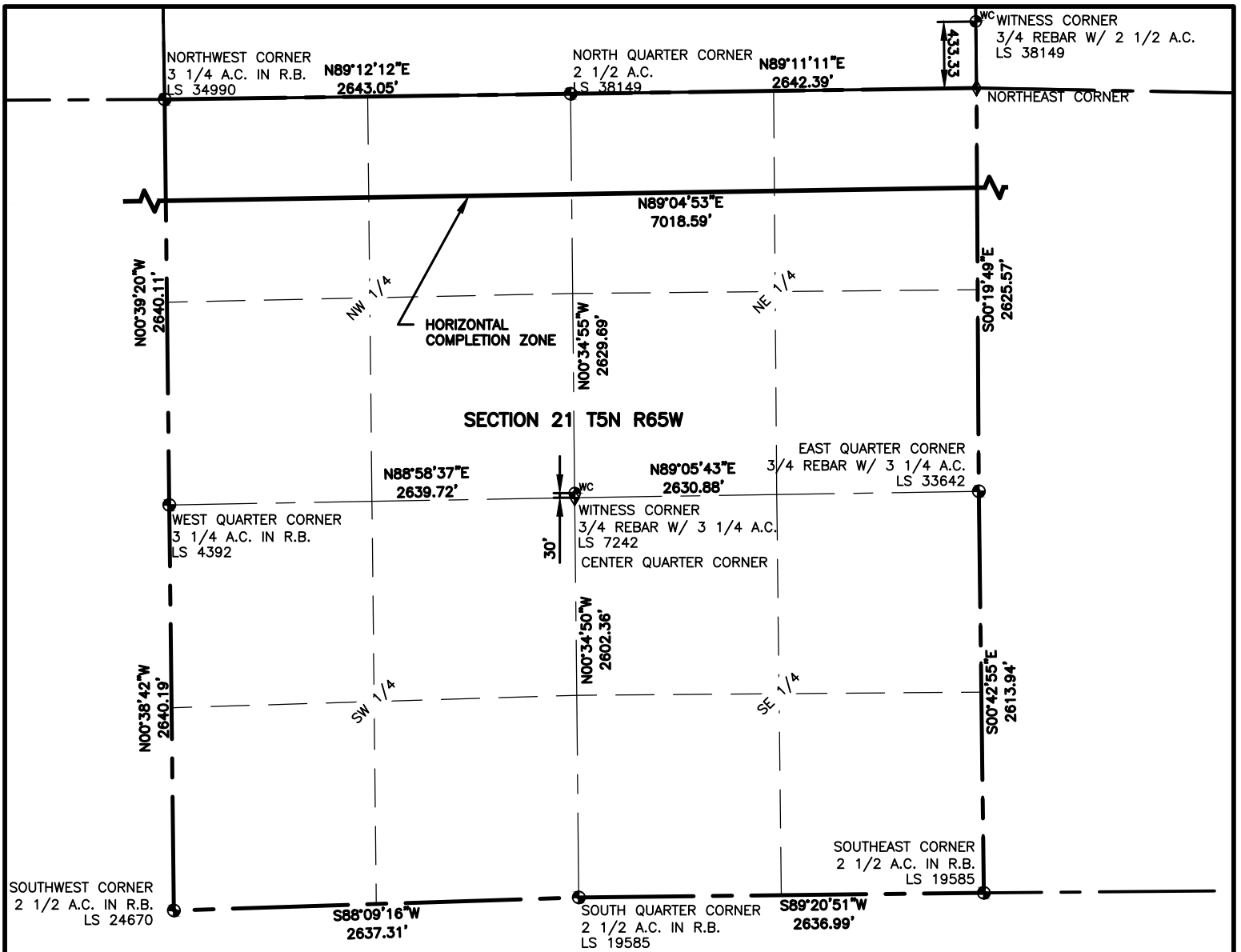
DATE
4/2/19

COGCC ID
332837

PROJECT - TASK NUMBER
0213001.01
I:\engineering\0218001.01 xog - greeley directional gp

BOOK AND PAGE
MR01/MR02

SURFACE - LOCATION
NE/4,NE/4, SEC20, T5N, R65W



LEGEND

- ALIQUOT CORNER
- ⊙ PROPOSED WELL
- ⊙ BOTTOM HOLE
- A.C. ALUMINUM CAP
- ◆ COMPUTED ALIQUOT CORNER
- R.B. RANGE BOX
- ⊙^{WC} WITNESS CORNER

NOTES:

- DISTANCES ARE MEASURED PERPENDICULAR TO NEAREST SECTION LINE AND ARE SHOWN ON THE SAME SIDE OF THE SECTION LINE WHERE THE WELL IS LOCATED.
- THIS MAP DOES NOT REPRESENT A MONUMENTED BOUNDARY SURVEY. SIXTEENTH CORNER LOCATIONS ARE COMPUTED, UNLESS OTHERWISE NOTED.
- BOTTOM HOLE LOCATIONS AND HORIZONTAL COMPLETION ZONE PROVIDED BY OTHERS.



0 1000

SCALE: 1"= 1000'
U.S. SURVEY FEET

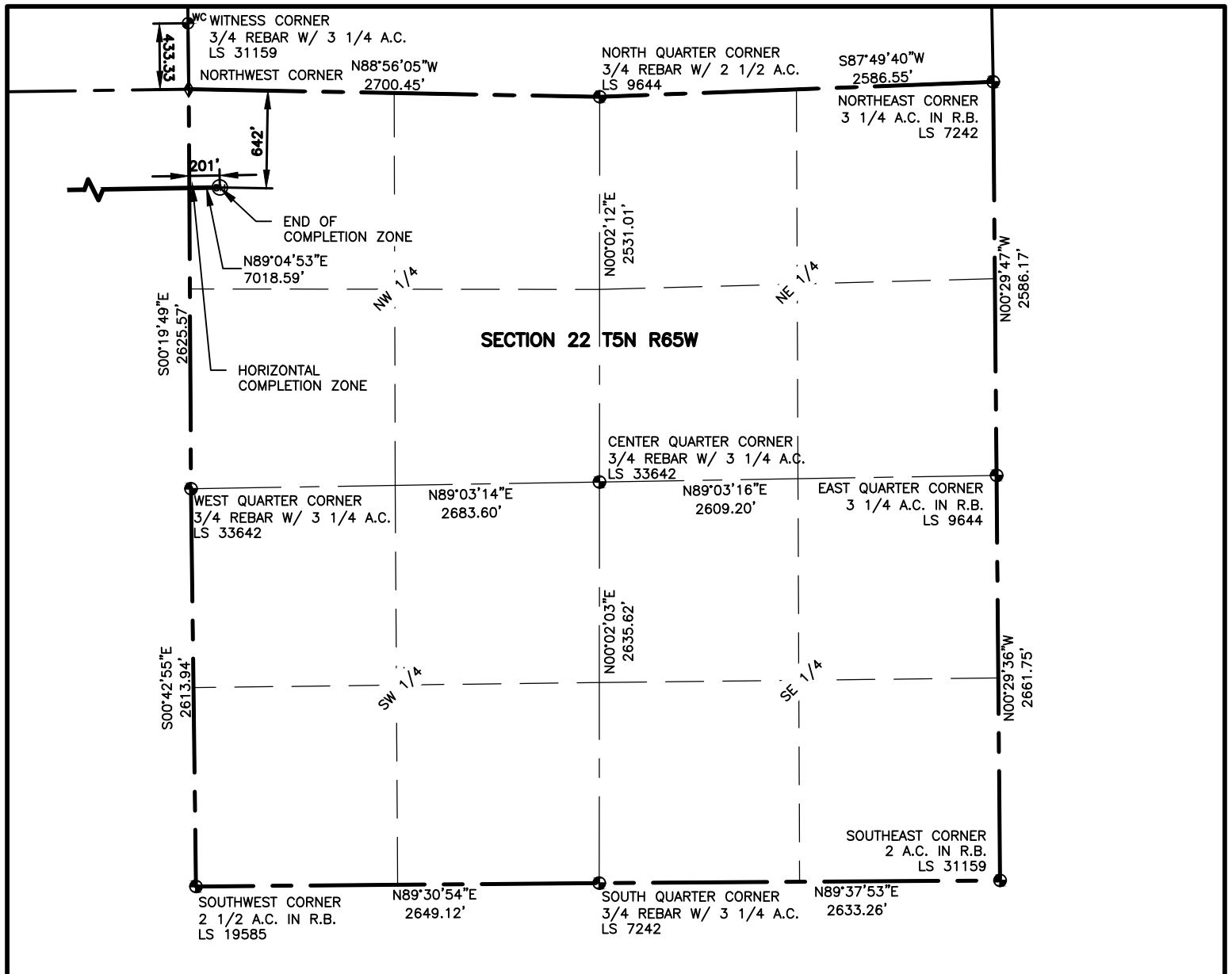


LAMP RYNEARSON
& ASSOCIATES

4715 Innovation Drive 970.226.0342 | P
Fort Collins, CO 80525 970.226.0879 | F
www.LRA-inc.com

PROPOSED WELL LOCATION EXHIBIT
GP CODY FED 20E-15-3
2 OF 3

DRAWN BY	DATE	COGCC ID	PROJECT - TASK NUMBER	BOOK AND PAGE	SURFACE - LOCATION
JMC	4/2/19	332837	0213001.01	MR01/MR02	NE/4, NE/4, SEC20, T5N, R65W
PATH/FILENAME	I:\engineering\0218001.01 xog - greeley directional gp (1) SURVEY DRAWINGS\EXHIBITS\GP - EAST 3D.dwg				

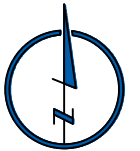


LEGEND

- ALIQUOT CORNER
- ⊙ PROPOSED WELL
- ⊙ BOTTOM HOLE
- A.C. ALUMINUM CAP
- ◆ COMPUTED ALIQUOT CORNER
- R.B. RANGE BOX
- ⊙^{WC} WITNESS CORNER

NOTES:

- DISTANCES ARE MEASURED PERPENDICULAR TO NEAREST SECTION LINE AND ARE SHOWN ON THE SAME SIDE OF THE SECTION LINE WHERE THE WELL IS LOCATED.
- THIS MAP DOES NOT REPRESENT A MONUMENTED BOUNDARY SURVEY. SIXTEENTH CORNER LOCATIONS ARE COMPUTED, UNLESS OTHERWISE NOTED.
- BOTTOM HOLE LOCATIONS AND HORIZONTAL COMPLETION ZONE PROVIDED BY OTHERS.



0 1000

SCALE: 1" = 1000'
U.S. SURVEY FEET



LAMP RYNEARSON
& ASSOCIATES

4715 Innovation Drive 970.226.0342 | P
Fort Collins, CO 80525 970.226.0879 | F
www.LRA-inc.com

PROPOSED WELL LOCATION EXHIBIT
GP CODY FED 20E-15-3
3 OF 3

DRAWN BY	DATE	COGCC ID	PROJECT - TASK NUMBER	BOOK AND PAGE	SURFACE - LOCATION
JMC	4/2/19	332837	0213001.01	MR01/MR02	NE/4, NE/4, SEC20, T5N, R65W
PATH/FILENAME	I:\engineering\0218001.01 xog - greeley directional gp (1) SURFACE DRAWINGS\EXHIBITS\GP - EAST 30.dwg				