

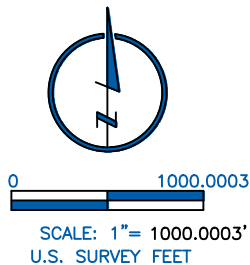
LAND SURVEYOR'S CERTIFICATION

LAMP, RYNEARSON & ASSOCIATES, INC., OF FT. COLLINS, COLORADO HAS, IN ACCORDANCE WITH A REQUEST FROM TROY OWENS AT EXTRACTION, DETERMINED THE SURFACE LOCATION OF THE WELL DESIGNATED AS GP CODY FED 20E-15-2 TO BE 682' FROM THE NORTH LINE AND 1305' FROM THE EAST LINE OF SECTION 20, TOWNSHIP 5 NORTH, RANGE 65 WEST OF THE 6TH P.M., WELD COUNTY, COLORADO.



Laine A. Landau
 PROFESSIONAL LAND SURVEYOR

LAINE A. LANDAU COLORADO PLS 31159
 DATE OF SURVEY: 3/22/2018 (SECTION CONTROL)
 DATE OF SURVEY: 08/23/2013 (WELL LOCATION)

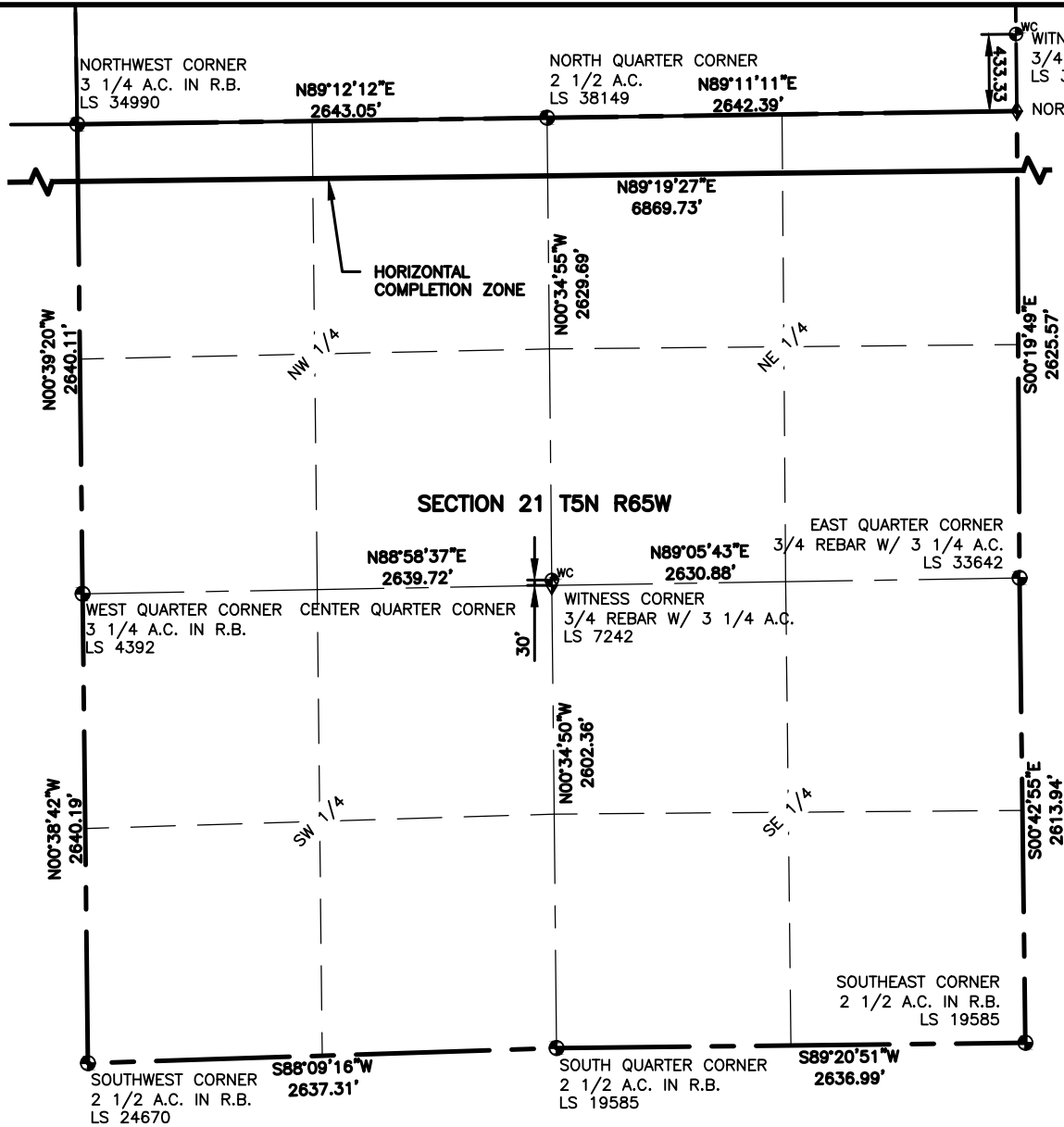


LAMP RYNEARSON
 & ASSOCIATES

4715 Innovation Drive 970.226.0342 | P
 Fort Collins, CO 80525 970.226.0879 | F
 www.LRA-inc.com

PROPOSED WELL LOCATION EXHIBIT
 GP CODY FED 20E-15-2
 1 OF 3

DRAWN BY	DATE	COGCC ID	PROJECT - TASK NUMBER	BOOK AND PAGE	SURFACE - LOCATION
CG	4/2/19	332837	0213001.01	MR01/MR02	NE/4,NE/4, SEC20, T5N, R65W
PATH\FILENAME	I:\engineering\0218001.01 xog - greeley directional gp				

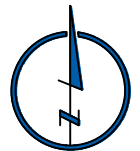


LEGEND

- ALIQUOT CORNER
- ⊙ PROPOSED WELL
- ⊙ BOTTOM HOLE
- A.C. ALUMINUM CAP
- ◆ COMPUTED ALIQUOT CORNER
- R.B. RANGE BOX
- ⊙^{WC} WITNESS CORNER

NOTES:

- DISTANCES ARE MEASURED PERPENDICULAR TO NEAREST SECTION LINE AND ARE SHOWN ON THE SAME SIDE OF THE SECTION LINE WHERE THE WELL IS LOCATED.
- THIS MAP DOES NOT REPRESENT A MONUMENTED BOUNDARY SURVEY. SIXTEENTH CORNER LOCATIONS ARE COMPUTED, UNLESS OTHERWISE NOTED.
- BOTTOM HOLE LOCATIONS AND HORIZONTAL COMPLETION ZONE PROVIDED BY OTHERS.



0 1000

SCALE: 1"= 1000'
U.S. SURVEY FEET



LAMP RYNEARSON
& ASSOCIATES

4715 Innovation Drive 970.226.0342 | P
Fort Collins, CO 80525 970.226.0879 | F
www.LRA-inc.com

PROPOSED WELL LOCATION EXHIBIT
GP CODY FED 20E-15-2
2 OF 3

DRAWN BY
CG
PATH/FILENAME

DATE
4/2/19

COGCC ID
332837

PROJECT - TASK NUMBER
0213001.01
- greeley directional gp

BOOK AND PAGE
MR01/MR02

SURFACE - LOCATION
NE/4, NE/4, SEC20, T5N, R65W

