



---

April 1, 2019

Mr. Jeff Robbins, Acting Director  
Colorado Oil & Gas Conservation Commission  
1120 Lincoln Street, Ste. 801  
Denver, Colorado 80203

RE: Rule 318.A.e.

GP Cody Fed 20E-15-1, GP Cody Fed 20E-15-2, GP Cody Fed 20E-15-3 wells ("wells") Horizontal Drill  
Proposal

Surface location: NENE Section 20, Township 5 North, Range 65 West Weld County, CO

Dear Acting Director Mr. Robbins,

Extraction Oil and Gas, Inc. (Extraction) is planning to drill the captioned horizontal wells in accordance with the provision of COGCC Rule 318A.e.

The wellbore spacing unit will be 560 acres, comprised of Section 20: N/2NE/4, Section 17: S/2SE/4, Section 21: N/2N/2, Section 16: S/2S/2; Section 22: NW/4NW/4, Section 15: SW/4SW/4 Township 5 North, Range 65 West, 6<sup>th</sup> P.M.

The subject wells are planned to drill and test the viability of the Niobrara and Codell formations. The wellbore spacing unit is depicted on the enclosed spacing unit exhibits.

Extraction hereby certifies to the Acting Director that all Owners within the proposed spacing unit above were notified and 30 days have passed. Extraction received an objection from PDC and worked out an agreement that works best for both companies to develop the minerals in the best way possible.

Sincerely,

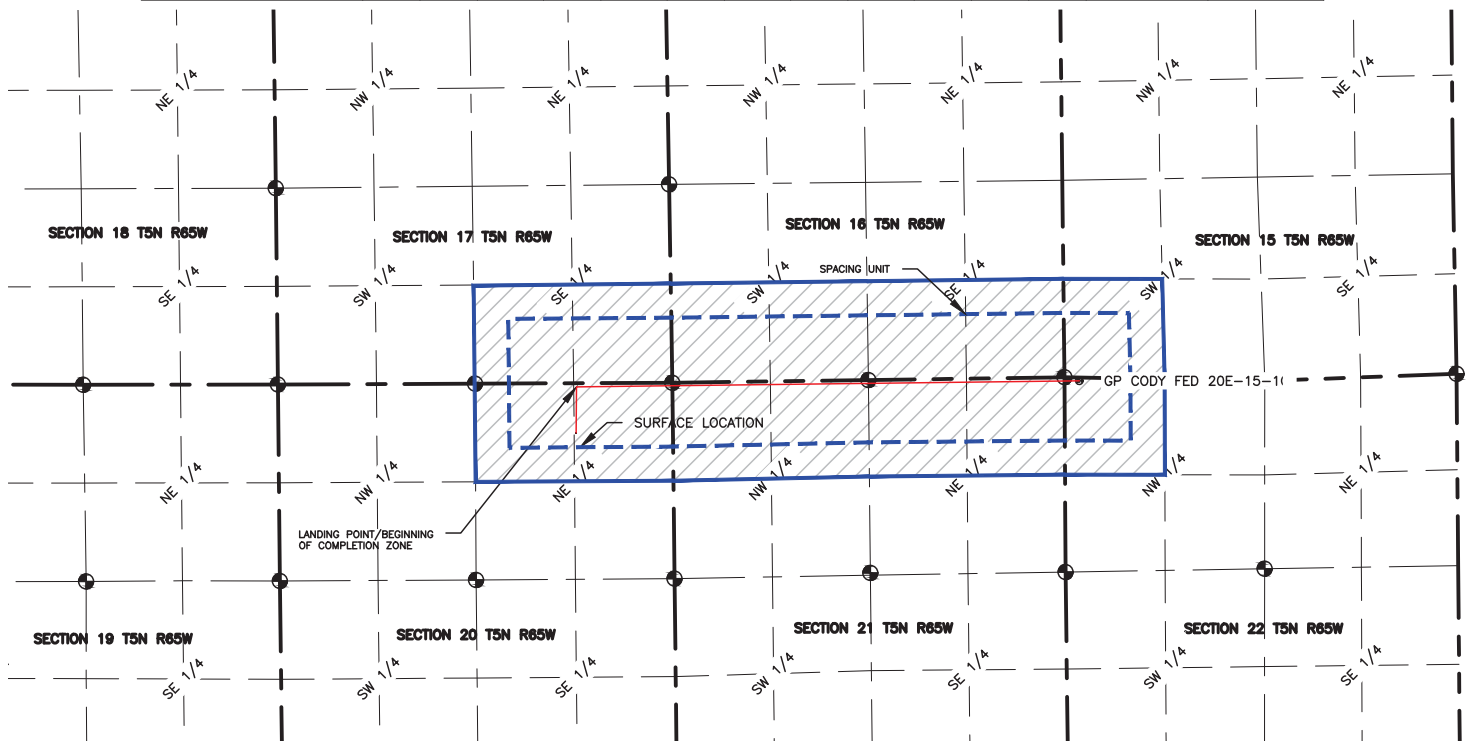
Bonnie Lamond  
Extraction Oil & Gas, Inc.

NAME: GP CODY FED 1  
 SPACING UNIT: SEC 20: N/2NE/4; SEC 21: N/2N/2; SEC 22: NW/4NW/4; SEC 17: S/2SE/4; SEC 16: S/2S/2;  
 SEC 15: SW/4SW/4, T5N, R65W, UNIT ACREAGE: 560



0 2000  
 SCALE: 1"= 2000'  
 U.S. SURVEY FEET

WELL NAME	SURFACE LOCATION				BEGIN HORIZONTAL COMPLETION ZONE				END HORIZONTAL COMPLETION ZONE				COMPLETION ZONE BEARING	COMPLETION ZONE LENGTH
	DIST.	DIR.	DIST.	DIR.	DIST.	DIR.	DIST.	DIR.	DIST.	DIR.	DIST.	DIR.		
GP CODY FED 20E-15-1	670	FNL	1305	FEL	50	FNL	2350	FWL	44	FNL	200	FWL	S89°18'15"E	6777.87'



**LAMP RYNEARSON**  
 & ASSOCIATES

4715 Innovation Drive 970.226.0342 | P  
 Fort Collins, CO 80525 970.226.0879 | F  
 www.LRA-Inc.com

Proposed Spacing Unit Exhibit  
 Greeley Directional Project  
 GP Cody Fed

**LEGEND**

- ALIQUOT CORNER
- BOTTOM HOLE
- COMPUTED ALIQUOT CORNER
- SECTION LINE
- QUARTER SECTION LINE
- SIXTEENTH LINE
- COMPUTED ALIQUOT CORNER FROM MONUMENT RECORDS
- COMPUTED FROM GLO RECORDS

DRAWN BY

CPG

DATE

4/9/2018

COGOC ID

332837

PROJECT - TASK NUMBER

0213001.01

BOOK AND PAGE

MR01/MR02

SURFACE - LOCATION

NE/4,NE/4, SEC20, T5N, R65W

PATH\FILENAME

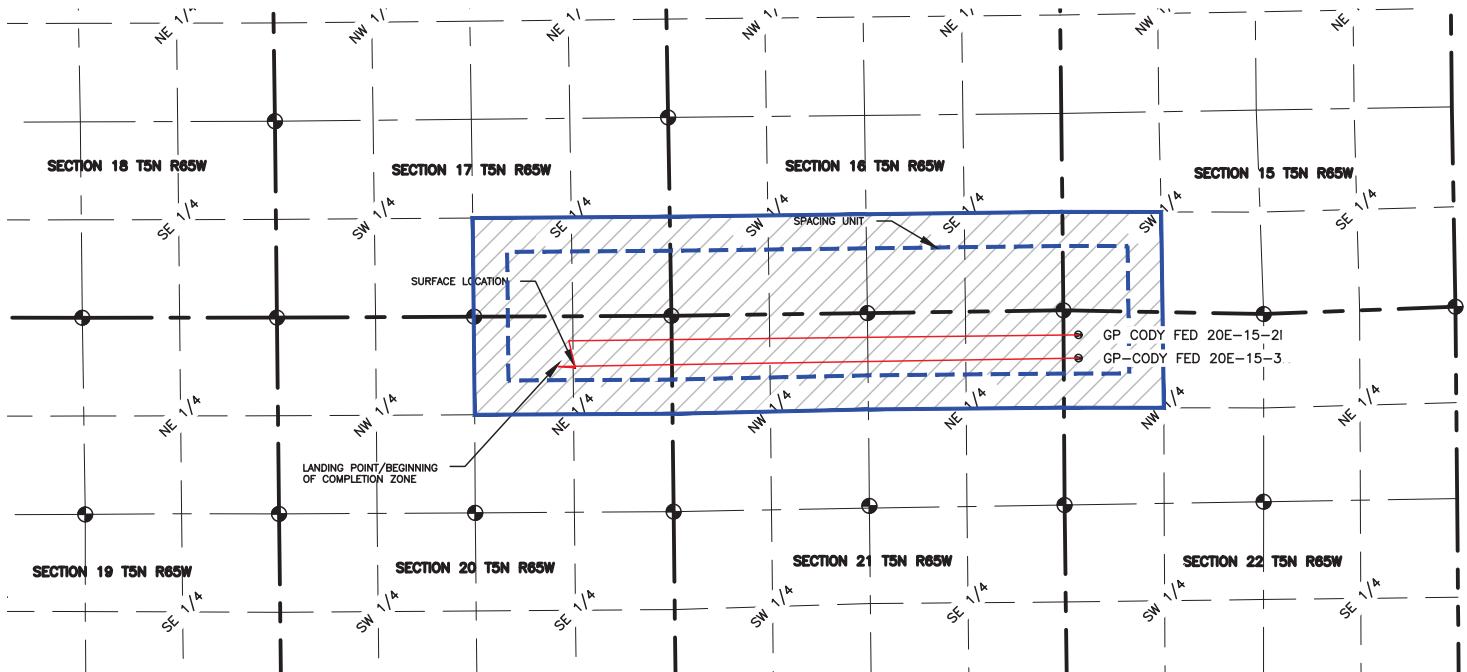
L:\engineering\0218001.01 xog - greeley directional gp  
 1:\SURFACE DRAWINGS\EXHIBITS\Proposed Spacing Units\0213001\_01R65W\_GP\_EAST\_1.dwg

NAME: GP CODY FED 2 & 3  
 SPACING UNIT: SEC 20: N/2NE/4; SEC 17: S/2SE/4; SEC 21: N/2N/2; SEC 22: NW/4NW/4;  
 SEC 16: S/2S/2; SEC 15: SW/4SW/4, T5N, R65W, UNIT ACREAGE: 560



0 2000  
 SCALE: 1" = 2000'  
 U.S. SURVEY FEET

WELL NAME	SURFACE LOCATION				BEGIN HORIZONTAL COMPLETION ZONE				END HORIZONTAL COMPLETION ZONE				COMPLETION ZONE BEARING	COMPLETION ZONE LENGTH
	DIST.	DIR.	DIST.	DIR.	DIST.	DIR.	DIST.	DIR.	DIST.	DIR.	DIST.	DIR.		
GP CODY FED 20E-15-2	682'	FNL	1305'	FEL	331'	FNL	1386'	FEL	327'	FNL	200'	FWL	S89°19'27"E	6869.73'
GP CODY FED 20E-15-3	694'	FNL	1305'	FEL	647'	FNL	1524'	FEL	642'	FNL	201'	FWL	N89°04'53"E	7018.59'



**LAMP RYNEARSON**  
 & ASSOCIATES

4715 Innovation Drive 970.226.0342 | P  
 Fort Collins, CO 80525 970.226.0879 | F  
 www.LRA-inc.com

Proposed Spacing Unit Exhibit  
 Greeley Directional Project  
 GP Cody Fed

#### LEGEND

- ALIQUOT CORNER
- ⊙ BOTTOM HOLE
- ◆ COMPUTED ALIQUOT CORNER
- SECTION LINE
- QUARTER SECTION LINE
- SIXTEENTH LINE
- △ COMPUTED ALIQUOT CORNER FROM MONUMENT RECORDS
- ⊠ COMPUTED FROM GLO RECORDS

DRAWN BY

CPG

DATE

4/9/2018

COGOC ID

021300101

PROJECT - TASK NUMBER

021300101

BOOK AND PAGE

MR01/MR02

SURFACE - LOCATION

NE/4,NE/4, SEC20, T5N, R65W

PATH\FILENAME

4:\Engineering\021300101 xog - greeley directional\021300101  
 cds\SURVEY\DRAWINGS\EXHIBITS\Planned Spacing Units\0213001-01PSUE-GP-EAST-2 and  
 3.dwg