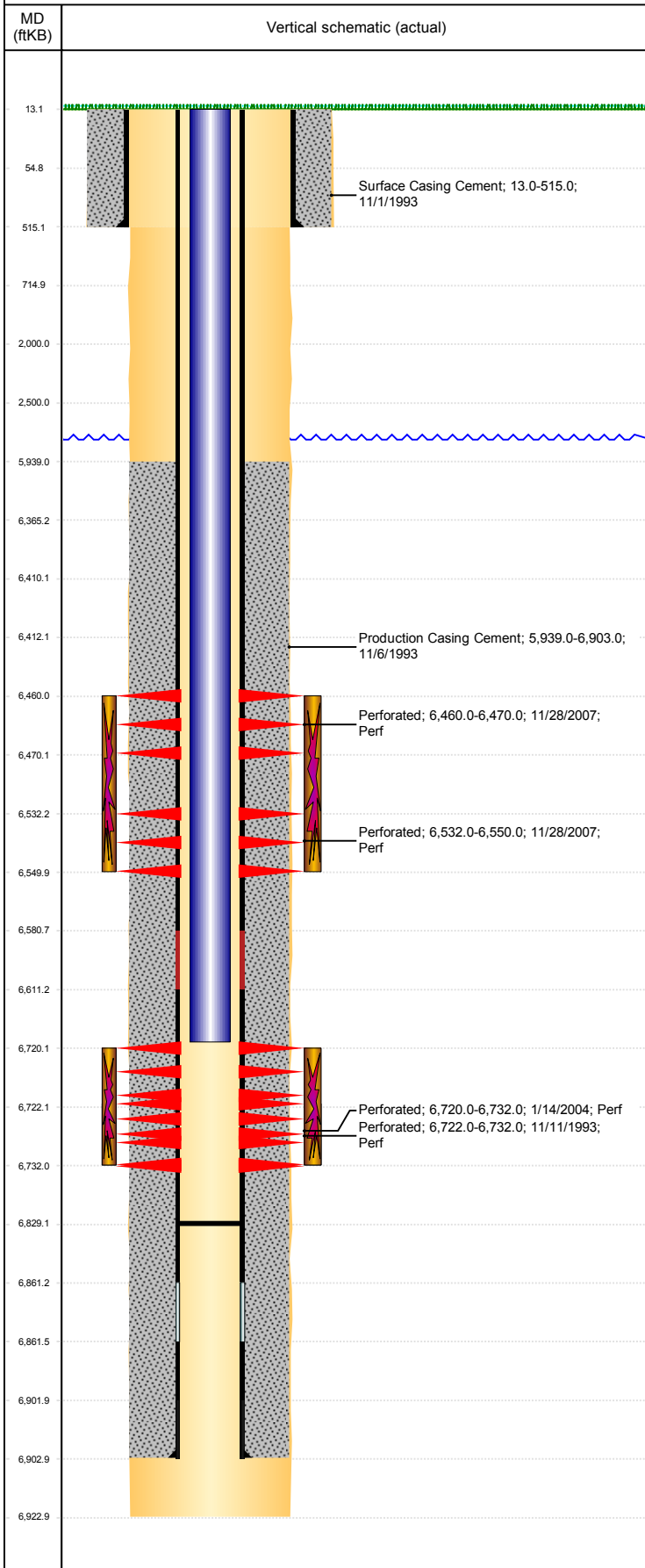


Well Name: WATKINS 12-13

VERTICAL, ORIGINAL HOLE, 4/9/2019 3:39:18 PM



| Well Header | | | | | | | | | |
|--|-------------|---------------------------|--------------------|--|----------------|------------------------------|------------------------------------|---------------------------------------|-------------|
| API 05-123-17585 | | Business Unit DJ BASIN | | | District 15 | | Well Config VERTICAL | | |
| KB - GL / MSL (ft... 13.00 | | Spud Date 11/1/1993 | | P & A Date | | Well Production Status PA | | | SoRT Yes |
| Comment PROD CSG- 1 JT M-75 MAVERIDE, 165 JTS B-70 BELVILLE. NO CBL, TOC CALCULATED. FIELD OPS NOTICE- FLOWLINES ABANDONED PER RULE 1103, RCVD 6/27/17. | | | | | | | | | |
| Surface Location (Congressional) | | | | | | | | | |
| Qtr 3 SW | Qtr 4 SW | Section 12 | Twnshp 4 | Twnsh... N | Range 64 | Rng E/... W | Actual Latitude (°) 40.32100264 | Actual Longitude (°) -104.50531969 | |
| Wellbore Sections | | | | | | | | | |
| Section Des | | | Size (in) | | | Act Top, MD (ftKB) | | Act Btm, MD (ftKB) | |
| Surface | | | 12 1/4 | | | 13 | | 515 | |
| Production | | | 7 7/8 | | | 515 | | 6,923 | |
| Casing Strings | | | | | | | | | |
| Csg Des | | | Run Date | | OD (in) | Wt/Len (lb/ft) | Grade | Top, MD (ftKB) | MD (ftKB) |
| Surface Casing | | | 11/1/1993 | | 8 5/8 | 23.00 | M-50 | 13.0 | 515.0 |
| Production | | | 11/6/1993 | | 3 1/2 | 7.70 | B-70 | 13.0 | 6,903.0 |
| Cement | | | | | | | | | |
| Des | | | | | Start Date | | Top (ftKB) | | Btm (ftKB) |
| Surface Casing Cement | | | | | 11/1/1993 | | 13.0 | | 515.0 |
| Production Casing Cement | | | | | 11/6/1993 | | 5,939.0 | | 6,903.0 |
| Zone Statuses | | | | | | | | | |
| Zone Name | Status Date | Status | Fluid Type | Job | | | | Prod Method | |
| CODELL | 12/13/2007 | SI | | RECOMPLETION, 11/26/2007 06:00 | | | | | |
| CODELL | 2/7/2008 | PR | | RECOMPLETION, 11/26/2007 06:00 | | | | | |
| NIOBRARA | 12/13/2007 | PR | | RECOMPLETION, 11/26/2007 06:00 | | | | | |
| NIOBRARA | 2/7/2008 | PR | | RECOMPLETION, 11/26/2007 06:00 | | | | | |
| Perforation Data | | | | | | | | | |
| Linked Zone | | Bnch/Stg | Entered Shot Total | Top (ftKB) | | Btm (ftKB) | | Date | |
| NIOBRARA, ORIGINAL HOLE | | A | 40 | 6,460.00 | | 6,470.00 | | 11/28/2007 | |
| NIOBRARA, ORIGINAL HOLE | | B | 72 | 6,532.00 | | 6,550.00 | | 11/28/2007 | |
| CODELL, ORIGINAL HOLE | | | 48 | 6,720.00 | | 6,732.00 | | 1/14/2004 | |
| CODELL, ORIGINAL HOLE | | | 20 | 6,722.00 | | 6,732.00 | | 11/11/1993 | |
| Stimulation Intervals | | | | | | | | | |
| Zone | | | | Start Date | | Top (ftKB) | | Btm (ftKB) | |
| NIOBRARA, ORIGINAL HOLE | | | | 12/12/2007 | | 6,460.0 | | 6,550.0 | |
| CODELL, ORIGINAL HOLE | | | | 1/20/2004 | | 6,720.0 | | 6,732.0 | |
| CODELL, ORIGINAL HOLE | | | | 11/23/1993 | | 6,722.0 | | 6,732.0 | |
| Other In Hole | | | | | | | | | |
| Run Date | | Des | | | | OD (in) | Top (ftKB) | Btm (ftKB) | |
| | | | | | | | | | |
| | | | | | | | | | |
| Logs | | | | | | | | | |
| Date | | Type | | | | Top, MD (ftKB) | | Btm, MD (ftKB) | |
| 11/6/1993 | | COMPENSATED DENSITY | | | | 4,080.0 | | 6,921.0 | |
| 11/6/1993 | | INDUCTION | | | | 514.0 | | 6,921.0 | |
| 11/11/1993 | | GAMMA RAY | | | | 6,300.0 | | 6,820.0 | |
| Plug Back Total Depths | | | | | | | | | |
| Date | | Type | | Com | | | | Depth (ftKB) | |
| 11/6/1993 | | LAT CH DOWN COLLAR | | TOP OF LATCH DOWN BAFFLE | | | | 6,829.0 | |
| 2/5/2008 | | FILL | | CLEANED OUT SAND PLUG DN TO 6829' WITH 27.95' IN ON... | | | | 6,829.0 | |