

Company: Petroleum Development Corp.

Well Name: Harold 6Y-304

API: 051234574800

County/Parish: Weld

State: Colorado

Country: United States

Job number: 16-1-83

Field: Wattenburg

Rd Id: Eridge 161

Survey Company: Ensign

Operator: Petroleum Development Corp.

Company Man: Brady Sharp/ Juan Fallon

Daylight DD: Zach Gentry

Swim Shift DD: Tony Gallow

NPHH DD: Eric Myers

Daylight MWD: Ryan Price

Nicks MWD: Robyn Haines

Log measurements Gamma ROP

Depth measured from: 2556 ft

Start: 0 ft

End: 11832 ft

Date: 2-3-2019

Maximum temperature: 190

Casing Depth: 2556 ft

Size: 9.56"

Mud Type: H2O

Start: 0 ft

End: 4787 ft

Events: MS 223

Surface: 2556 ft

Size: 9.56"

Mud Type: H2O

Start: 0 ft

End: 4787 ft

Events: MS 223

Intermediate: 2556 ft

Size: 9.56"

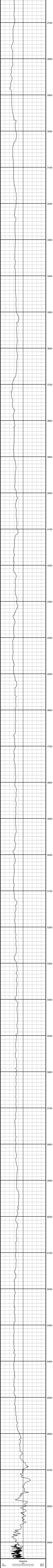
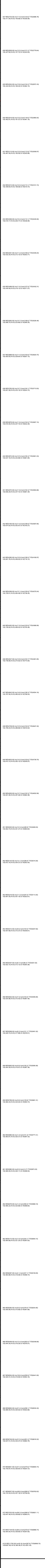
Mud Type: H2O

Start: 0 ft

End: 4787 ft

Events: MS 223

Run	Bit Size	Gamma	Start	End
1	12.25"	60.45 ft	0 ft	2576 ft
2	8.5"	60.45 ft	2576 ft	11832 ft
3				2-3-2019
4				2-3-2019
5				2-3-2019
6				2-3-2019
7				2-3-2019
8				2-3-2019
9				2-3-2019
10				2-3-2019



Ensign uses its best efforts to provide its customers with accurate information and interpretations in conjunction with services performed but will not be held liable or responsible for the accuracy of such information or interpretation.