

R. 97 W.

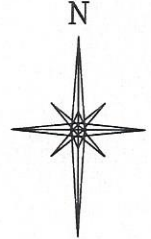
T. 5 S.

T. 6 S.

GRID NORTH

SCALE' 1" = 1000'

500' 0 1000'



SHL

LATITUDE (NAD 83)

NORTH 39.558514 DEG.

LONGITUDE (NAD 83)

WEST 108.205065 DEG.

NORTHING (NAD 83)

1639671.23

EASTING (NAD 83)

2237420.19

BHL/TOG

LATITUDE (NAD 83)

NORTH 39.562084 DEG.

LONGITUDE (NAD 83)

WEST 108.199134 DEG.

NORTHING (NAD 83)

1640921

EASTING (NAD 83)

2239130

CC FEDERAL

0697-03-03E

UNGRADED ELEVATION:

8438.0'

BASIS OF ELEVATION: USGS SPOT ELEVATION
LOCATED AT THE SW CORNER OF SECTION 3,
T6S, R97W
ELEVATION: 8387'

NOTES

- GPS OPERATOR T. SHERRILL OBSERVED A PDOP OF 1.4.
- ALL GPS OBSERVATIONS ARE IN COMPLIANCE WITH COGCC RULE No.215.
- NO EXISTING IMPROVEMENTS WITHIN 500' OF LOCATION. SEE LOCATION DRAWING.
- SURROUNDING SURFACE USE IS NATIVE BRUSH, NON CROP RANGELAND.

BASIS OF BEARING/DATUM

SPCS COLORADO CENTRAL NAD 27 BASED ON GPS OBSERVATIONS
AND OPUS SOLUTION ON DRG CONTROL POINT "WILLIAMS"
HAVING A POSITION OF:
NAD83(2011)
LAT 39° 31' 35.18" NORTH
LONG 108° 12' 16.79" WEST
NAVD88 ELEVATION: 8618.14'

THE SOUTH LINE OF THE SW¼ OF
SECTION 3, MONUMENTED BY BLM BC'S AND BEARING
N 88°15'57" W.

SURVEYOR'S STATEMENT

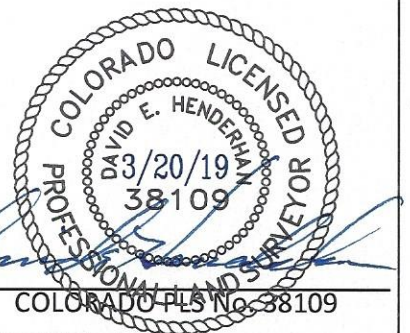
I, DAVID E. HENDERHAN, AN EMPLOYEE AND AGENT ON BEHALF OF D.R. GRIFFIN & ASSOCIATES, INC. STATE
THE PLAT HEREON IS A CORRECT REPRESENTATION OF A SURVEY MADE UNDER MY SUPERVISION ON THE
23rd DAY OF JUNE, 2017 OF THE SHOWN CC FEDERAL 0697-03-03E AND THAT THE LOCATION HAS BEEN
STAKED ON THE GROUND AS SHOWN ON THIS PLAT.

Notice: In accordance with Colorado State Law, any legal action based upon any defect in this survey plat must commence
within three (3) years after first discovery of such defect. In no event, may any action based upon any defect in this survey
plat be commenced more than ten (10) years from the date of certification shown hereon.

CC 0697-03-07 PAD

LEGEND

- WELL LOCATION
- APPROX. BHL
- DENOTES 90° TIE
- FOUND MONUMENT
- CALCULATED CORNER
- BLM LEASE LINE



COLORADO PLS No. 38109



DAVID E. HENDERHAN

1414 ELK ST., ROCK SPRINGS, WY 82901

DRAWN: 8/23/2017 - TCM

SCALE: 1" = 1000'

REVISED: 3/20/2019 - TCM

DRG JOB No. 21295

REVISED BHL

A1 03-03E

**PLAT OF DRILLING LOCATION IN
LOT 11, SECTION 3, FOR
LARAMIE ENERGY, LLC.**

**2138' F/NL, & 2332' F/EL, SECTION 3,
T. 6 S., R. 97 W., 6TH P.M.,
GARFIELD COUNTY, COLORADO**