



BAYSWATER

Bayswater Exploration & Production, LLC

DJ Basin

COT 30-J Pad

COT EAST Q-30-29HC

Wellbore #1

Plan: Design #1

Standard Planning Report

12 January, 2019



Pad Name: COT 30-J Pad
Well Name: COT EAST Q-30-29HC
Ground Level: 4947.0
SHL Latitude: 40° 32' 38.238 N
SHL Longitude: 104° 49' 29.309 W

SECTION DETAILS

Sec	MD	Inc	Azi	TVD	+N/-S	+E/-W	Dleg	TFace	VSec	Target
1	0.0	0.00	0.00	0.0	0.0	0.0	0.00	0.00	0.0	
2	1500.0	0.00	0.00	1500.0	0.0	0.0	0.00	0.00	0.0	
3	1839.0	6.78	134.02	1838.2	-13.9	14.4	2.00	134.02	14.9	
4	6960.3	6.78	134.02	6923.7	-434.0	449.2	0.00	0.00	465.7	
5	7811.3	89.89	89.01	7447.0	-468.1	1019.7	10.00	-45.21	1037.1	COT EAST Q-30-29HC LP
6	15463.7	89.89	89.01	7462.0	-336.5	8670.9	0.00	0.00	8677.4	COT EAST Q-30-29HC PBHL

DESIGN TARGET DETAILS

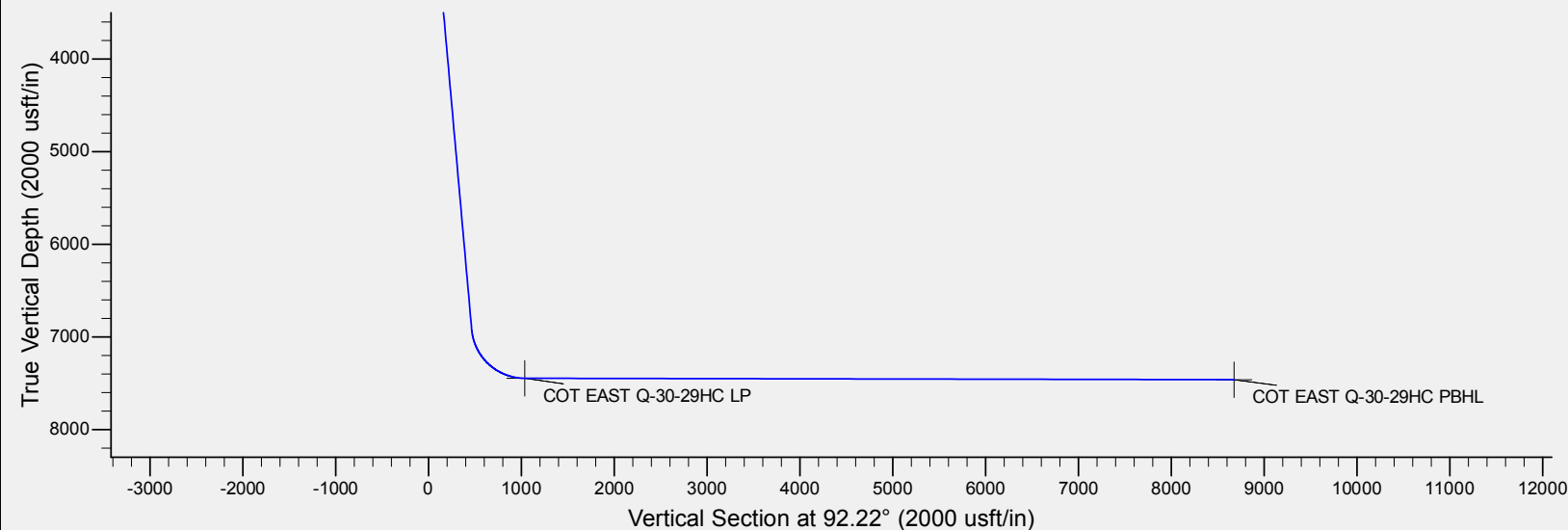
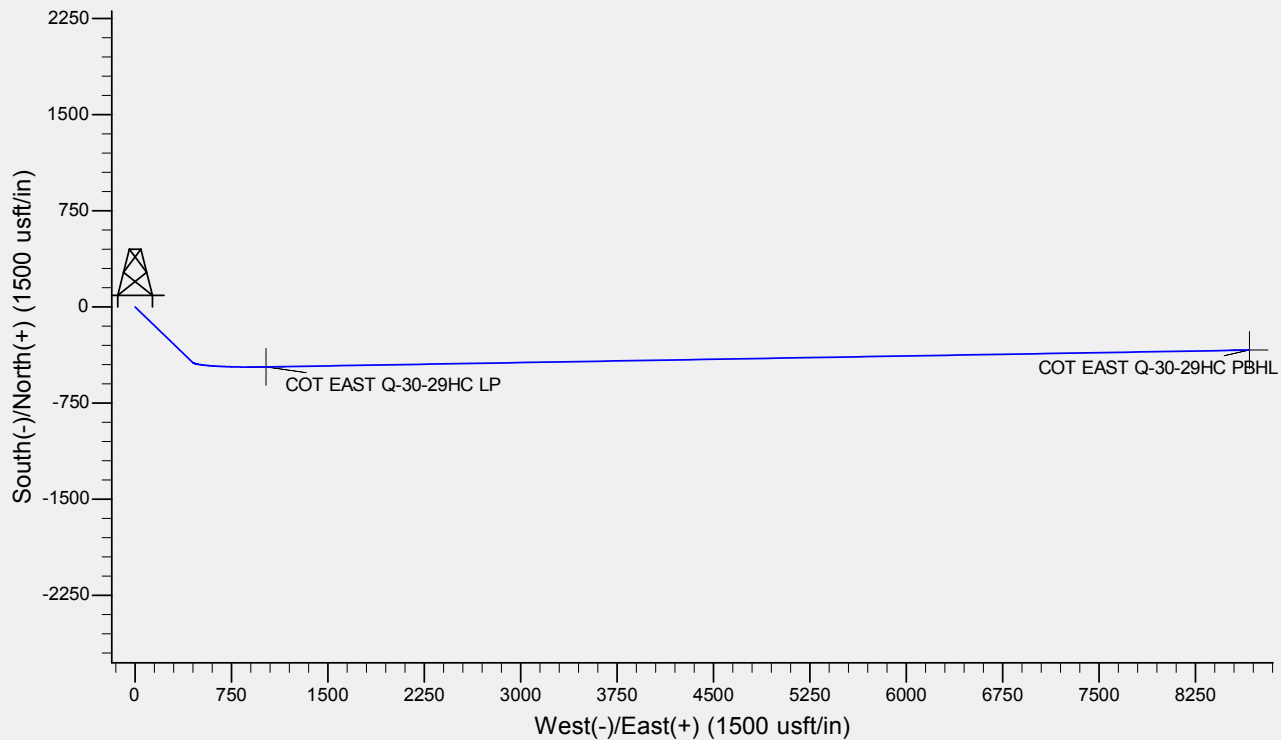
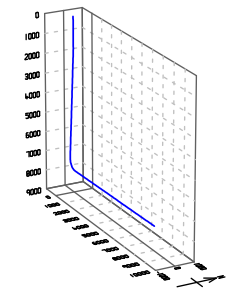
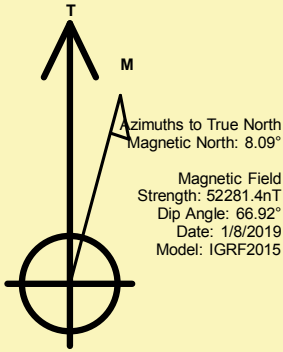
Name	TVD	+N/-S	+E/-W	Northing	Easting	Latitude	Longitude	Shape
COT EAST Q-30-29HC LP	7447.0	-468.1	1019.7	1441257.69	3188670.07	40° 32' 33.612 N	104° 49' 16.100 W	Point
COT EAST Q-30-29HC PBHL	- plan hits target center 7462.0	-336.5	8670.9	1441447.51	3196320.06	40° 32' 34.897 N	104° 47' 36.992 W	Point
	- plan hits target center							

REFERENCE INFORMATION

Co-ordinate (N/E) Reference: Well COT EAST Q-30-29HC, True North
Vertical (TVD) Reference: WELL @ 4947.0usft (Original Well Elev)
Section (VS) Reference: Slot - (0.0N, 0.0E)
Measured Depth Reference: WELL @ 4947.0usft (Original Well Elev)
Calculation Method: Minimum Curvature

CASING DETAILS

No casing data is available





Database:	EDM	Local Co-ordinate Reference:	Well COT EAST Q-30-29HC
Company:	Bayswater Exploration & Production, LLC	TVD Reference:	WELL @ 4947.0usft (Original Well Elev)
Project:	DJ Basin	MD Reference:	WELL @ 4947.0usft (Original Well Elev)
Site:	COT 30-J Pad	North Reference:	True
Well:	COT EAST Q-30-29HC	Survey Calculation Method:	Minimum Curvature
Wellbore:	Wellbore #1		
Design:	Design #1		

Project	DJ Basin, DJ Basin		
Map System:	US State Plane 1983	System Datum:	Mean Sea Level
Geo Datum:	North American Datum 1983		
Map Zone:	Colorado Northern Zone		

Site	COT 30-J Pad				
Site Position:		Northing:	1,441,808.00 usft	Latitude:	40° 32' 39.131 N
From:	Lat/Long	Easting:	3,187,596.68 usft	Longitude:	104° 49' 29.950 W
Position Uncertainty:	0.0 usft	Slot Radius:	13-3/16 "	Grid Convergence:	0.44 °

Well	COT EAST Q-30-29HC					
Well Position	+N/-S	-90.4 usft	Northing:	1,441,718.03 usft	Latitude:	40° 32' 38.238 N
	+E/-W	49.5 usft	Easting:	3,187,646.84 usft	Longitude:	104° 49' 29.309 W
Position Uncertainty		0.0 usft	Wellhead Elevation:		Ground Level:	4,947.0 usft

Wellbore	Wellbore #1				
Magnetics	Model Name	Sample Date	Declination (°)	Dip Angle (°)	Field Strength (nT)
	IGRF2015	1/8/2019	8.09	66.92	52,281.35945546

Design	Design #1			
Audit Notes:				
Version:	Phase:	PLAN	Tie On Depth:	0.0
Vertical Section:	Depth From (TVD) (usft)	+N/-S (usft)	+E/-W (usft)	Direction (°)
	0.0	0.0	0.0	92.22

Plan Survey Tool Program			Date	1/8/2019	
Depth From (usft)	Depth To (usft)	Survey (Wellbore)	Tool Name	Remarks	
1	0.0	15,463.7	Design #1 (Wellbore #1)	MWD	
				OWSG MWD - Standard	

Plan Sections										
Measured Depth (usft)	Inclination (°)	Azimuth (°)	Vertical Depth (usft)	+N/-S (usft)	+E/-W (usft)	Dogleg Rate (°/100usft)	Build Rate (°/100usft)	Turn Rate (°/100usft)	TFO (°)	Target
0.0	0.00	0.00	0.0	0.0	0.0	0.00	0.00	0.00	0.00	
1,500.0	0.00	0.00	1,500.0	0.0	0.0	0.00	0.00	0.00	0.00	
1,839.0	6.78	134.02	1,838.2	-13.9	14.4	2.00	2.00	0.00	134.02	
6,960.3	6.78	134.02	6,923.7	-434.0	449.2	0.00	0.00	0.00	0.00	
7,811.3	89.89	89.01	7,447.0	-468.1	1,019.7	10.00	9.77	-5.29	-45.21	COT EAST Q-30-29H
15,463.7	89.89	89.01	7,462.0	-336.5	8,670.9	0.00	0.00	0.00	0.00	COT EAST Q-30-29H



Database:	EDM	Local Co-ordinate Reference:	Well COT EAST Q-30-29HC
Company:	Bayswater Exploration & Production, LLC	TVD Reference:	WELL @ 4947.0usft (Original Well Elev)
Project:	DJ Basin	MD Reference:	WELL @ 4947.0usft (Original Well Elev)
Site:	COT 30-J Pad	North Reference:	True
Well:	COT EAST Q-30-29HC	Survey Calculation Method:	Minimum Curvature
Wellbore:	Wellbore #1		
Design:	Design #1		

Planned Survey									
Measured Depth (usft)	Inclination (°)	Azimuth (°)	Vertical Depth (usft)	+N/-S (usft)	+E/-W (usft)	Vertical Section (usft)	Dogleg Rate (°/100usft)	Build Rate (°/100usft)	Turn Rate (°/100usft)
0.0	0.00	0.00	0.0	0.0	0.0	0.0	0.00	0.00	0.00
100.0	0.00	0.00	100.0	0.0	0.0	0.0	0.00	0.00	0.00
200.0	0.00	0.00	200.0	0.0	0.0	0.0	0.00	0.00	0.00
300.0	0.00	0.00	300.0	0.0	0.0	0.0	0.00	0.00	0.00
400.0	0.00	0.00	400.0	0.0	0.0	0.0	0.00	0.00	0.00
500.0	0.00	0.00	500.0	0.0	0.0	0.0	0.00	0.00	0.00
600.0	0.00	0.00	600.0	0.0	0.0	0.0	0.00	0.00	0.00
700.0	0.00	0.00	700.0	0.0	0.0	0.0	0.00	0.00	0.00
800.0	0.00	0.00	800.0	0.0	0.0	0.0	0.00	0.00	0.00
900.0	0.00	0.00	900.0	0.0	0.0	0.0	0.00	0.00	0.00
1,000.0	0.00	0.00	1,000.0	0.0	0.0	0.0	0.00	0.00	0.00
1,100.0	0.00	0.00	1,100.0	0.0	0.0	0.0	0.00	0.00	0.00
1,200.0	0.00	0.00	1,200.0	0.0	0.0	0.0	0.00	0.00	0.00
1,300.0	0.00	0.00	1,300.0	0.0	0.0	0.0	0.00	0.00	0.00
1,400.0	0.00	0.00	1,400.0	0.0	0.0	0.0	0.00	0.00	0.00
1,500.0	0.00	0.00	1,500.0	0.0	0.0	0.0	0.00	0.00	0.00
1,600.0	2.00	134.02	1,600.0	-1.2	1.3	1.3	2.00	2.00	0.00
1,700.0	4.00	134.02	1,699.8	-4.8	5.0	5.2	2.00	2.00	0.00
1,800.0	6.00	134.02	1,799.5	-10.9	11.3	11.7	2.00	2.00	0.00
1,839.0	6.78	134.02	1,838.2	-13.9	14.4	14.9	2.00	2.00	0.00
1,900.0	6.78	134.02	1,898.8	-18.9	19.6	20.3	0.00	0.00	0.00
2,000.0	6.78	134.02	1,998.1	-27.1	28.1	29.1	0.00	0.00	0.00
2,100.0	6.78	134.02	2,097.4	-35.3	36.6	37.9	0.00	0.00	0.00
2,200.0	6.78	134.02	2,196.7	-43.5	45.1	46.7	0.00	0.00	0.00
2,300.0	6.78	134.02	2,296.0	-51.7	53.5	55.5	0.00	0.00	0.00
2,400.0	6.78	134.02	2,395.3	-59.9	62.0	64.3	0.00	0.00	0.00
2,500.0	6.78	134.02	2,494.6	-68.1	70.5	73.1	0.00	0.00	0.00
2,600.0	6.78	134.02	2,593.9	-76.3	79.0	81.9	0.00	0.00	0.00
2,700.0	6.78	134.02	2,693.2	-84.5	87.5	90.7	0.00	0.00	0.00
2,800.0	6.78	134.02	2,792.5	-92.7	96.0	99.5	0.00	0.00	0.00
2,900.0	6.78	134.02	2,891.8	-101.0	104.5	108.3	0.00	0.00	0.00
3,000.0	6.78	134.02	2,991.1	-109.2	113.0	117.1	0.00	0.00	0.00
3,100.0	6.78	134.02	3,090.4	-117.4	121.5	125.9	0.00	0.00	0.00
3,200.0	6.78	134.02	3,189.7	-125.6	130.0	134.7	0.00	0.00	0.00
3,300.0	6.78	134.02	3,289.0	-133.8	138.4	143.5	0.00	0.00	0.00
3,400.0	6.78	134.02	3,388.3	-142.0	146.9	152.3	0.00	0.00	0.00
3,500.0	6.78	134.02	3,487.6	-150.2	155.4	161.1	0.00	0.00	0.00
3,600.0	6.78	134.02	3,586.9	-158.4	163.9	169.9	0.00	0.00	0.00
3,700.0	6.78	134.02	3,686.2	-166.6	172.4	178.7	0.00	0.00	0.00
3,800.0	6.78	134.02	3,785.5	-174.8	180.9	187.5	0.00	0.00	0.00
3,900.0	6.78	134.02	3,884.8	-183.0	189.4	196.3	0.00	0.00	0.00
4,000.0	6.78	134.02	3,984.1	-191.2	197.9	205.1	0.00	0.00	0.00
4,100.0	6.78	134.02	4,083.4	-199.4	206.4	213.9	0.00	0.00	0.00
4,200.0	6.78	134.02	4,182.7	-207.6	214.9	222.7	0.00	0.00	0.00
4,300.0	6.78	134.02	4,282.0	-215.8	223.3	231.5	0.00	0.00	0.00
4,400.0	6.78	134.02	4,381.3	-224.0	231.8	240.3	0.00	0.00	0.00
4,500.0	6.78	134.02	4,480.6	-232.2	240.3	249.1	0.00	0.00	0.00
4,600.0	6.78	134.02	4,579.9	-240.4	248.8	257.9	0.00	0.00	0.00
4,700.0	6.78	134.02	4,679.2	-248.6	257.3	266.7	0.00	0.00	0.00
4,800.0	6.78	134.02	4,778.5	-256.8	265.8	275.5	0.00	0.00	0.00
4,900.0	6.78	134.02	4,877.8	-265.0	274.3	284.4	0.00	0.00	0.00
5,000.0	6.78	134.02	4,977.1	-273.2	282.8	293.2	0.00	0.00	0.00
5,100.0	6.78	134.02	5,076.4	-281.4	291.3	302.0	0.00	0.00	0.00
5,200.0	6.78	134.02	5,175.7	-289.6	299.7	310.8	0.00	0.00	0.00



Database:	EDM	Local Co-ordinate Reference:	Well COT EAST Q-30-29HC
Company:	Bayswater Exploration & Production, LLC	TVD Reference:	WELL @ 4947.0usft (Original Well Elev)
Project:	DJ Basin	MD Reference:	WELL @ 4947.0usft (Original Well Elev)
Site:	COT 30-J Pad	North Reference:	True
Well:	COT EAST Q-30-29HC	Survey Calculation Method:	Minimum Curvature
Wellbore:	Wellbore #1		
Design:	Design #1		

Planned Survey									
Measured Depth (usft)	Inclination (°)	Azimuth (°)	Vertical Depth (usft)	+N/-S (usft)	+E/-W (usft)	Vertical Section (usft)	Dogleg Rate (°/100usft)	Build Rate (°/100usft)	Turn Rate (°/100usft)
5,300.0	6.78	134.02	5,275.0	-297.8	308.2	319.6	0.00	0.00	0.00
5,400.0	6.78	134.02	5,374.3	-306.0	316.7	328.4	0.00	0.00	0.00
5,500.0	6.78	134.02	5,473.6	-314.2	325.2	337.2	0.00	0.00	0.00
5,600.0	6.78	134.02	5,572.9	-322.4	333.7	346.0	0.00	0.00	0.00
5,700.0	6.78	134.02	5,672.2	-330.6	342.2	354.8	0.00	0.00	0.00
5,800.0	6.78	134.02	5,771.5	-338.8	350.7	363.6	0.00	0.00	0.00
5,900.0	6.78	134.02	5,870.8	-347.0	359.2	372.4	0.00	0.00	0.00
6,000.0	6.78	134.02	5,970.1	-355.2	367.7	381.2	0.00	0.00	0.00
6,100.0	6.78	134.02	6,069.4	-363.4	376.2	390.0	0.00	0.00	0.00
6,200.0	6.78	134.02	6,168.7	-371.6	384.6	398.8	0.00	0.00	0.00
6,300.0	6.78	134.02	6,268.0	-379.8	393.1	407.6	0.00	0.00	0.00
6,400.0	6.78	134.02	6,367.3	-388.1	401.6	416.4	0.00	0.00	0.00
6,500.0	6.78	134.02	6,466.6	-396.3	410.1	425.2	0.00	0.00	0.00
6,600.0	6.78	134.02	6,565.9	-404.5	418.6	434.0	0.00	0.00	0.00
6,700.0	6.78	134.02	6,665.2	-412.7	427.1	442.8	0.00	0.00	0.00
6,800.0	6.78	134.02	6,764.5	-420.9	435.6	451.6	0.00	0.00	0.00
6,900.0	6.78	134.02	6,863.8	-429.1	444.1	460.4	0.00	0.00	0.00
6,960.3	6.78	134.02	6,923.7	-434.0	449.2	465.7	0.00	0.00	0.00
7,000.0	9.98	117.55	6,963.0	-437.2	453.9	470.5	10.00	8.06	-41.49
7,100.0	19.34	102.86	7,059.6	-444.9	477.8	494.7	10.00	9.36	-14.68
7,200.0	29.12	97.69	7,150.7	-451.9	518.2	535.3	10.00	9.78	-5.18
7,300.0	39.01	94.96	7,233.5	-457.9	573.8	591.1	10.00	9.89	-2.72
7,400.0	48.93	93.21	7,305.4	-462.7	643.0	660.4	10.00	9.93	-1.76
7,500.0	58.88	91.92	7,364.2	-466.3	723.6	741.1	10.00	9.95	-1.29
7,600.0	68.83	90.87	7,408.2	-468.4	813.2	830.8	10.00	9.96	-1.04
7,700.0	78.80	89.96	7,436.0	-469.1	909.1	926.6	10.00	9.96	-0.91
7,800.0	88.76	89.11	7,446.9	-468.3	1,008.4	1,025.8	10.00	9.96	-0.85
7,811.3	89.89	89.01	7,447.0	-468.1	1,019.7	1,037.1	10.00	9.96	-0.84
COT EAST Q-30-29HC LP									
7,900.0	89.89	89.01	7,447.2	-466.6	1,108.4	1,125.6	0.00	0.00	0.00
8,000.0	89.89	89.01	7,447.4	-464.9	1,208.4	1,225.5	0.00	0.00	0.00
8,100.0	89.89	89.01	7,447.6	-463.1	1,308.4	1,325.3	0.00	0.00	0.00
8,200.0	89.89	89.01	7,447.8	-461.4	1,408.3	1,425.2	0.00	0.00	0.00
8,300.0	89.89	89.01	7,448.0	-459.7	1,508.3	1,525.0	0.00	0.00	0.00
8,400.0	89.89	89.01	7,448.2	-458.0	1,608.3	1,624.9	0.00	0.00	0.00
8,500.0	89.89	89.01	7,448.3	-456.3	1,708.3	1,724.7	0.00	0.00	0.00
8,600.0	89.89	89.01	7,448.5	-454.6	1,808.3	1,824.5	0.00	0.00	0.00
8,700.0	89.89	89.01	7,448.7	-452.8	1,908.3	1,924.4	0.00	0.00	0.00
8,800.0	89.89	89.01	7,448.9	-451.1	2,008.2	2,024.2	0.00	0.00	0.00
8,900.0	89.89	89.01	7,449.1	-449.4	2,108.2	2,124.1	0.00	0.00	0.00
9,000.0	89.89	89.01	7,449.3	-447.7	2,208.2	2,223.9	0.00	0.00	0.00
9,100.0	89.89	89.01	7,449.5	-446.0	2,308.2	2,323.8	0.00	0.00	0.00
9,200.0	89.89	89.01	7,449.7	-444.2	2,408.2	2,423.6	0.00	0.00	0.00
9,300.0	89.89	89.01	7,449.9	-442.5	2,508.2	2,523.4	0.00	0.00	0.00
9,400.0	89.89	89.01	7,450.1	-440.8	2,608.2	2,623.3	0.00	0.00	0.00
9,500.0	89.89	89.01	7,450.3	-439.1	2,708.1	2,723.1	0.00	0.00	0.00
9,600.0	89.89	89.01	7,450.5	-437.4	2,808.1	2,823.0	0.00	0.00	0.00
9,700.0	89.89	89.01	7,450.7	-435.6	2,908.1	2,922.8	0.00	0.00	0.00
9,800.0	89.89	89.01	7,450.9	-433.9	3,008.1	3,022.7	0.00	0.00	0.00
9,900.0	89.89	89.01	7,451.1	-432.2	3,108.1	3,122.5	0.00	0.00	0.00
10,000.0	89.89	89.01	7,451.3	-430.5	3,208.1	3,222.3	0.00	0.00	0.00
10,100.0	89.89	89.01	7,451.5	-428.8	3,308.1	3,322.2	0.00	0.00	0.00
10,200.0	89.89	89.01	7,451.7	-427.0	3,408.0	3,422.0	0.00	0.00	0.00



Database:	EDM	Local Co-ordinate Reference:	Well COT EAST Q-30-29HC
Company:	Bayswater Exploration & Production, LLC	TVD Reference:	WELL @ 4947.0usft (Original Well Elev)
Project:	DJ Basin	MD Reference:	WELL @ 4947.0usft (Original Well Elev)
Site:	COT 30-J Pad	North Reference:	True
Well:	COT EAST Q-30-29HC	Survey Calculation Method:	Minimum Curvature
Wellbore:	Wellbore #1		
Design:	Design #1		

Planned Survey									
Measured Depth (usft)	Inclination (°)	Azimuth (°)	Vertical Depth (usft)	+N/-S (usft)	+E/-W (usft)	Vertical Section (usft)	Dogleg Rate (°/100usft)	Build Rate (°/100usft)	Turn Rate (°/100usft)
10,300.0	89.89	89.01	7,451.9	-425.3	3,508.0	3,521.9	0.00	0.00	0.00
10,400.0	89.89	89.01	7,452.1	-423.6	3,608.0	3,621.7	0.00	0.00	0.00
10,500.0	89.89	89.01	7,452.3	-421.9	3,708.0	3,721.6	0.00	0.00	0.00
10,600.0	89.89	89.01	7,452.5	-420.2	3,808.0	3,821.4	0.00	0.00	0.00
10,700.0	89.89	89.01	7,452.7	-418.4	3,908.0	3,921.3	0.00	0.00	0.00
10,800.0	89.89	89.01	7,452.9	-416.7	4,007.9	4,021.1	0.00	0.00	0.00
10,900.0	89.89	89.01	7,453.1	-415.0	4,107.9	4,120.9	0.00	0.00	0.00
11,000.0	89.89	89.01	7,453.3	-413.3	4,207.9	4,220.8	0.00	0.00	0.00
11,100.0	89.89	89.01	7,453.4	-411.6	4,307.9	4,320.6	0.00	0.00	0.00
11,200.0	89.89	89.01	7,453.6	-409.9	4,407.9	4,420.5	0.00	0.00	0.00
11,300.0	89.89	89.01	7,453.8	-408.1	4,507.9	4,520.3	0.00	0.00	0.00
11,400.0	89.89	89.01	7,454.0	-406.4	4,607.9	4,620.2	0.00	0.00	0.00
11,500.0	89.89	89.01	7,454.2	-404.7	4,707.8	4,720.0	0.00	0.00	0.00
11,600.0	89.89	89.01	7,454.4	-403.0	4,807.8	4,819.8	0.00	0.00	0.00
11,700.0	89.89	89.01	7,454.6	-401.3	4,907.8	4,919.7	0.00	0.00	0.00
11,800.0	89.89	89.01	7,454.8	-399.5	5,007.8	5,019.5	0.00	0.00	0.00
11,900.0	89.89	89.01	7,455.0	-397.8	5,107.8	5,119.4	0.00	0.00	0.00
12,000.0	89.89	89.01	7,455.2	-396.1	5,207.8	5,219.2	0.00	0.00	0.00
12,100.0	89.89	89.01	7,455.4	-394.4	5,307.8	5,319.1	0.00	0.00	0.00
12,200.0	89.89	89.01	7,455.6	-392.7	5,407.7	5,418.9	0.00	0.00	0.00
12,300.0	89.89	89.01	7,455.8	-390.9	5,507.7	5,518.7	0.00	0.00	0.00
12,400.0	89.89	89.01	7,456.0	-389.2	5,607.7	5,618.6	0.00	0.00	0.00
12,500.0	89.89	89.01	7,456.2	-387.5	5,707.7	5,718.4	0.00	0.00	0.00
12,600.0	89.89	89.01	7,456.4	-385.8	5,807.7	5,818.3	0.00	0.00	0.00
12,700.0	89.89	89.01	7,456.6	-384.1	5,907.7	5,918.1	0.00	0.00	0.00
12,800.0	89.89	89.01	7,456.8	-382.3	6,007.6	6,018.0	0.00	0.00	0.00
12,900.0	89.89	89.01	7,457.0	-380.6	6,107.6	6,117.8	0.00	0.00	0.00
13,000.0	89.89	89.01	7,457.2	-378.9	6,207.6	6,217.6	0.00	0.00	0.00
13,100.0	89.89	89.01	7,457.4	-377.2	6,307.6	6,317.5	0.00	0.00	0.00
13,200.0	89.89	89.01	7,457.6	-375.5	6,407.6	6,417.3	0.00	0.00	0.00
13,300.0	89.89	89.01	7,457.8	-373.7	6,507.6	6,517.2	0.00	0.00	0.00
13,400.0	89.89	89.01	7,458.0	-372.0	6,607.6	6,617.0	0.00	0.00	0.00
13,500.0	89.89	89.01	7,458.2	-370.3	6,707.5	6,716.9	0.00	0.00	0.00
13,600.0	89.89	89.01	7,458.3	-368.6	6,807.5	6,816.7	0.00	0.00	0.00
13,700.0	89.89	89.01	7,458.5	-366.9	6,907.5	6,916.5	0.00	0.00	0.00
13,800.0	89.89	89.01	7,458.7	-365.2	7,007.5	7,016.4	0.00	0.00	0.00
13,900.0	89.89	89.01	7,458.9	-363.4	7,107.5	7,116.2	0.00	0.00	0.00
14,000.0	89.89	89.01	7,459.1	-361.7	7,207.5	7,216.1	0.00	0.00	0.00
14,100.0	89.89	89.01	7,459.3	-360.0	7,307.5	7,315.9	0.00	0.00	0.00
14,200.0	89.89	89.01	7,459.5	-358.3	7,407.4	7,415.8	0.00	0.00	0.00
14,300.0	89.89	89.01	7,459.7	-356.6	7,507.4	7,515.6	0.00	0.00	0.00
14,400.0	89.89	89.01	7,459.9	-354.8	7,607.4	7,615.4	0.00	0.00	0.00
14,500.0	89.89	89.01	7,460.1	-353.1	7,707.4	7,715.3	0.00	0.00	0.00
14,600.0	89.89	89.01	7,460.3	-351.4	7,807.4	7,815.1	0.00	0.00	0.00
14,700.0	89.89	89.01	7,460.5	-349.7	7,907.4	7,915.0	0.00	0.00	0.00
14,800.0	89.89	89.01	7,460.7	-348.0	8,007.3	8,014.8	0.00	0.00	0.00
14,900.0	89.89	89.01	7,460.9	-346.2	8,107.3	8,114.7	0.00	0.00	0.00
15,000.0	89.89	89.01	7,461.1	-344.5	8,207.3	8,214.5	0.00	0.00	0.00
15,100.0	89.89	89.01	7,461.3	-342.8	8,307.3	8,314.3	0.00	0.00	0.00
15,200.0	89.89	89.01	7,461.5	-341.1	8,407.3	8,414.2	0.00	0.00	0.00
15,300.0	89.89	89.01	7,461.7	-339.4	8,507.3	8,514.0	0.00	0.00	0.00
15,400.0	89.89	89.01	7,461.9	-337.6	8,607.3	8,613.9	0.00	0.00	0.00
15,463.7	89.89	89.01	7,462.0	-336.5	8,670.9	8,677.4	0.00	0.00	0.00
COT EAST Q-30-29HC PBHL									



Database:	EDM	Local Co-ordinate Reference:	Well COT EAST Q-30-29HC
Company:	Bayswater Exploration & Production, LLC	TVD Reference:	WELL @ 4947.0usft (Original Well Elev)
Project:	DJ Basin	MD Reference:	WELL @ 4947.0usft (Original Well Elev)
Site:	COT 30-J Pad	North Reference:	True
Well:	COT EAST Q-30-29HC	Survey Calculation Method:	Minimum Curvature
Wellbore:	Wellbore #1		
Design:	Design #1		

Planned Survey									
Measured Depth (usft)	Inclination (°)	Azimuth (°)	Vertical Depth (usft)	+N/-S (usft)	+E/-W (usft)	Vertical Section (usft)	Dogleg Rate (°/100usft)	Build Rate (°/100usft)	Turn Rate (°/100usft)

Design Targets									
Target Name - hit/miss target - Shape	Dip Angle (°)	Dip Dir. (°)	TVD (usft)	+N/-S (usft)	+E/-W (usft)	Northing (usft)	Easting (usft)	Latitude	Longitude
COT EAST Q-30-29HC I - plan hits target center - Point	0.00	0.00	7,447.0	-468.1	1,019.7	1,441,257.69	3,188,670.08	40° 32' 33.612 N	104° 49' 16.100 W
COT EAST Q-30-29HC I - plan hits target center - Point	0.00	0.00	7,462.0	-336.5	8,670.9	1,441,447.51	3,196,320.06	40° 32' 34.897 N	104° 47' 36.992 W