

# **SRC ENERGY**

**WELD COUNTY (NAD83, TRUE NORTH)**

**5N-66W-05 VOLT 19-5 PAD**

**VOLT 14N-3B-L**

**Wellbore #1**

**Plan: Design #1**

## **Standard Planning Report**

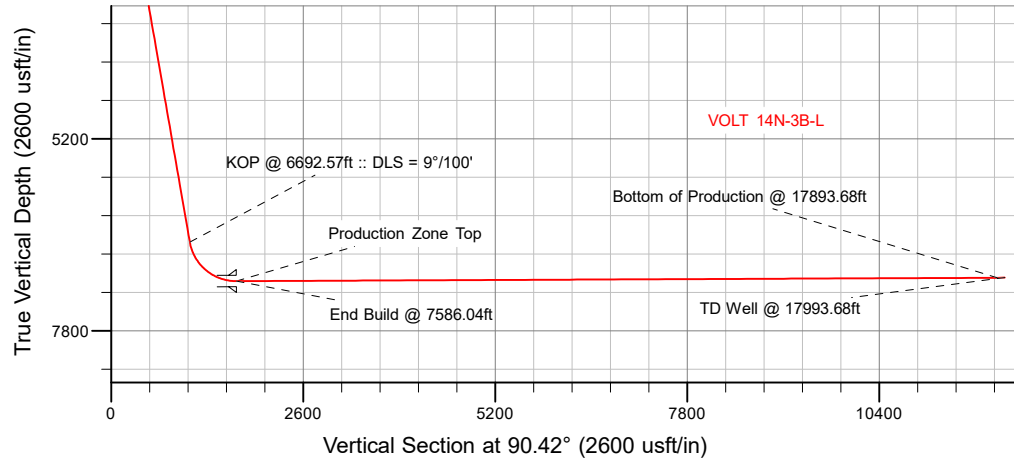
**18 November, 2018**

Project: WELD COUNTY (NAD83, TRUE NORTH)  
Site: 5N-66W-05 VOLT 19-5 PAD  
Well: VOLT 14N-3B-L  
Wellbore: Wellbore #1  
Design: Design #1

# SRC ENERGY

## CASING DETAILS

TVD	MD	Name
1800.00	1819.03	9 5/8"
7128.00	7586.04	Production Zone Top



## SECTION DETAILS

Sec	MD	Inc	Azi	TVD	+N/-S	+E/-W	Dleg	TFace	VSect	Target
1	0.00	0.00	0.00	0.00	0.00	0.00	0.00	0.00	0.00	
2	220.00	0.00	0.00	220.00	0.00	0.00	0.00	0.00	0.00	
3	717.00	9.94	97.60	714.51	-5.69	42.63	2.00	97.60	42.67	
4	6692.57	9.94	97.60	6600.38	-142.11	1065.05	0.00	0.00	1066.05	
5	7586.04	90.26	89.65	7128.00	-151.12	1695.20	9.00	-8.06	1696.26	
6	17893.68	90.26	89.65	7082.00	-88.51	12002.55	0.00	0.00	12002.88	VOLT 14N-3B-L_BPZ
7	17993.68	90.26	89.65	7081.55	-87.91	12102.55	0.00	0.00	12102.87	

## WELLBORE TARGET DETAILS (LAT/LONG)

Name	TVD	+N/-S	+E/-W	Latitude	Longitude
VOLT 14N-3B-L_SHL	0.00	0.00	0.00	40.424563	-104.809161
VOLT 14N-3B-L_BHL	7081.55	-87.91	12102.55	40.424314	-104.765691
VOLT 14N-3B-L_BPZ	7082.00	-88.51	12002.55	40.424312	-104.766050

## WELL DETAILS: VOLT 14N-3B-L

GL = 4814'

RKB = 4' @ 4818.00usft (IKON 12)

Plan: Design #1 (VOLT 14N-3B-L/Wellbore #1)

Date: 11/18/2018

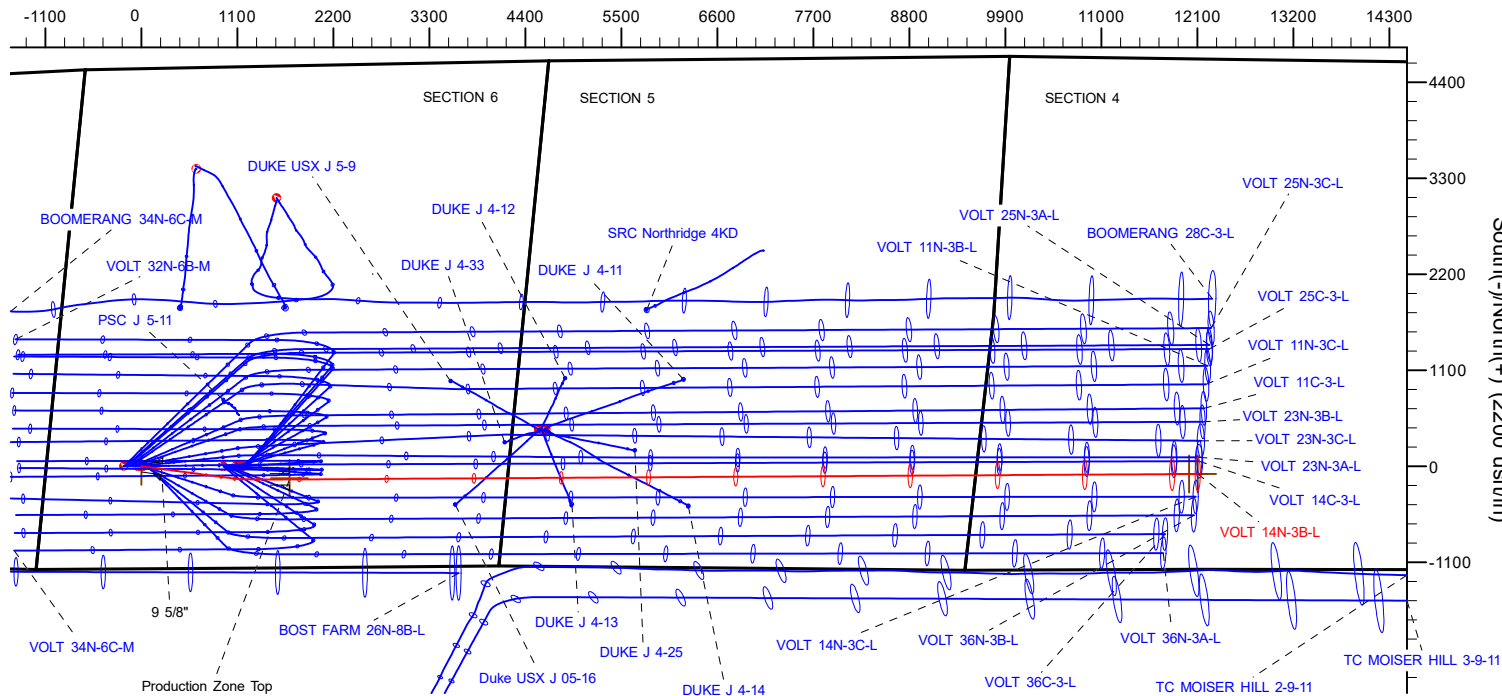
**SHL**  
1175' FSL  
1087' FWL

**LP**  
1013' FSL  
2486' FEL  
40.424148° Lat  
-104.803072° Long

**BPZ**  
1093' FSL  
2428' FWL

**BHL**  
1093' FSL  
2528' FWL

West(-)/East(+) (2200 usft/in)



**T** Azimuths to True North  
**M** Magnetic North: 8.09°  
Magnetic Field  
Strength: 52243.3snT  
Dip Angle: 66.83°  
Date: 11/2/2018  
Model: IGRF2015

# Hewlett-Packard

## Planning Report

<b>Database:</b>	EDM 5000.14 Single User Db	<b>Local Co-ordinate Reference:</b>	Well VOLT 14N-3B-L
<b>Company:</b>	SRC ENERGY	<b>TVD Reference:</b>	RKB = 4' @ 4818.00usft (IKON 12)
<b>Project:</b>	WELD COUNTY (NAD83, TRUE NORTH)	<b>MD Reference:</b>	RKB = 4' @ 4818.00usft (IKON 12)
<b>Site:</b>	5N-66W-05 VOLT 19-5 PAD	<b>North Reference:</b>	True
<b>Well:</b>	VOLT 14N-3B-L	<b>Survey Calculation Method:</b>	Minimum Curvature
<b>Wellbore:</b>	Wellbore #1		
<b>Design:</b>	Design #1		

<b>Project</b>	WELD COUNTY (NAD83, TRUE NORTH)		
<b>Map System:</b>	US State Plane 1983	<b>System Datum:</b>	Mean Sea Level
<b>Geo Datum:</b>	North American Datum 1983		
<b>Map Zone:</b>	Colorado Northern Zone		

Site		5N-66W-05 VOLT 19-5 PAD			
Site Position:		Northing:	1,398,257.75 usft	Latitude:	40.424567
From:	Lat/Long	Easting:	3,192,134.26 usft	Longitude:	-104.809879
Position Uncertainty:	0.00 usft	Slot Radius:	13-3/16 "	Grid Convergence:	0.45 °

Well	VOLT 14N-3B-L					
Well Position	+N/-S	-1.46 usft	Northing:	1,398,257.85 usft	Latitude:	40.424563
	+E/-W	199.90 usft	Easting:	3,192,334.16 usft	Longitude:	-104.809161
Position Uncertainty		3.28 usft	Wellhead Elevation:		Ground Level:	4,814.00 usft

<b>Wellbore</b>	Wellbore #1				
<b>Magnetics</b>	<b>Model Name</b>	<b>Sample Date</b>	<b>Declination (°)</b>	<b>Dip Angle (°)</b>	<b>Field Strength (nT)</b>
	IGRF2015	11/2/2018	8.09	66.83	52,243.33203145

<b>Design</b>	Design #1				
<b>Audit Notes:</b>					
<b>Version:</b>		<b>Phase:</b>	PLAN	<b>Tie On Depth:</b>	0.00
<b>Vertical Section:</b>	<b>Depth From (TVD) (usft)</b>	<b>+N/-S (usft)</b>	<b>+E/-W (usft)</b>	<b>Direction (°)</b>	
	0.00	0.00	0.00	90.42	

<b>Plan Survey Tool Program</b>	<b>Date</b>	11/18/2018			
<b>Depth From (usft)</b>	<b>Depth To (usft)</b>	<b>Survey (Wellbore)</b>	<b>Tool Name</b>	<b>Remarks</b>	
1	0.00	1,800.00	Design #1 (Wellbore #1)	SRC Energy_ISCWSA REV 2	
				Fixed:v2:crustal field declinatio	
2	1,800.00	17,993.68	Design #1 (Wellbore #1)	SRC Energy_ISCWSA REV 2	
				Fixed:v2:Rockies, crustal dec +	

# Hewlett-Packard

## Planning Report

<b>Database:</b>	EDM 5000.14 Single User Db	<b>Local Co-ordinate Reference:</b>	Well VOLT 14N-3B-L
<b>Company:</b>	SRC ENERGY	<b>TVD Reference:</b>	RKB = 4' @ 4818.00usft (IKON 12)
<b>Project:</b>	WELD COUNTY (NAD83, TRUE NORTH)	<b>MD Reference:</b>	RKB = 4' @ 4818.00usft (IKON 12)
<b>Site:</b>	5N-66W-05 VOLT 19-5 PAD	<b>North Reference:</b>	True
<b>Well:</b>	VOLT 14N-3B-L	<b>Survey Calculation Method:</b>	Minimum Curvature
<b>Wellbore:</b>	Wellbore #1		
<b>Design:</b>	Design #1		

Plan Sections										
Measured Depth (usft)	Inclination (°)	Azimuth (°)	Vertical Depth (usft)	+N/-S (usft)	+E/-W (usft)	Dogleg Rate (°/100usft)	Build Rate (°/100usft)	Turn Rate (°/100usft)	TFO (°)	Target
0.00	0.00	0.00	0.00	0.00	0.00	0.00	0.00	0.00	0.00	
220.00	0.00	0.00	220.00	0.00	0.00	0.00	0.00	0.00	0.00	
717.00	9.94	97.60	714.51	-5.69	42.63	2.00	2.00	0.00	97.60	
6,692.57	9.94	97.60	6,600.38	-142.11	1,065.05	0.00	0.00	0.00	0.00	
7,586.04	90.26	89.65	7,128.00	-151.12	1,695.20	9.00	8.99	-0.89	-8.06	
17,893.68	90.26	89.65	7,082.00	-88.51	12,002.55	0.00	0.00	0.00	0.00	VOLT 14N-3B-L_BPZ
17,993.68	90.26	89.65	7,081.55	-87.91	12,102.55	0.00	0.00	0.00	0.00	

# Hewlett-Packard

## Planning Report

<b>Database:</b>	EDM 5000.14 Single User Db	<b>Local Co-ordinate Reference:</b>	Well VOLT 14N-3B-L
<b>Company:</b>	SRC ENERGY	<b>TVD Reference:</b>	RKB = 4' @ 4818.00usft (IKON 12)
<b>Project:</b>	WELD COUNTY (NAD83, TRUE NORTH)	<b>MD Reference:</b>	RKB = 4' @ 4818.00usft (IKON 12)
<b>Site:</b>	5N-66W-05 VOLT 19-5 PAD	<b>North Reference:</b>	True
<b>Well:</b>	VOLT 14N-3B-L	<b>Survey Calculation Method:</b>	Minimum Curvature
<b>Wellbore:</b>	Wellbore #1		
<b>Design:</b>	Design #1		

Planned Survey									
Measured Depth (usft)	Inclination (°)	Azimuth (°)	Vertical Depth (usft)	+N/-S (usft)	+E/-W (usft)	Vertical Section (usft)	Dogleg Rate (°/100usft)	Build Rate (°/100usft)	Turn Rate (°/100usft)
0.00	0.00	0.00	0.00	0.00	0.00	0.00	0.00	0.00	0.00
100.00	0.00	0.00	100.00	0.00	0.00	0.00	0.00	0.00	0.00
200.00	0.00	0.00	200.00	0.00	0.00	0.00	0.00	0.00	0.00
220.00	0.00	0.00	220.00	0.00	0.00	0.00	0.00	0.00	0.00
Begin Nudge @ 220.00ft									
300.00	1.60	97.60	299.99	-0.15	1.11	1.11	2.00	2.00	0.00
400.00	3.60	97.60	399.88	-0.75	5.60	5.61	2.00	2.00	0.00
500.00	5.60	97.60	499.55	-1.81	13.55	13.57	2.00	2.00	0.00
600.00	7.60	97.60	598.89	-3.33	24.94	24.97	2.00	2.00	0.00
700.00	9.60	97.60	697.76	-5.31	39.77	39.80	2.00	2.00	0.00
717.00	9.94	97.60	714.51	-5.69	42.63	42.67	2.00	2.00	0.00
Hold Tangent @ 717.00ft									
800.00	9.94	97.60	796.26	-7.58	56.83	56.88	0.00	0.00	0.00
900.00	9.94	97.60	894.76	-9.87	73.94	74.01	0.00	0.00	0.00
1,000.00	9.94	97.60	993.26	-12.15	91.05	91.13	0.00	0.00	0.00
1,100.00	9.94	97.60	1,091.76	-14.43	108.16	108.26	0.00	0.00	0.00
1,200.00	9.94	97.60	1,190.26	-16.71	125.27	125.39	0.00	0.00	0.00
1,300.00	9.94	97.60	1,288.76	-19.00	142.38	142.51	0.00	0.00	0.00
1,400.00	9.94	97.60	1,387.26	-21.28	159.49	159.64	0.00	0.00	0.00
1,500.00	9.94	97.60	1,485.76	-23.56	176.60	176.76	0.00	0.00	0.00
1,600.00	9.94	97.60	1,584.26	-25.85	193.71	193.89	0.00	0.00	0.00
1,700.00	9.94	97.60	1,682.75	-28.13	210.82	211.02	0.00	0.00	0.00
1,800.00	9.94	97.60	1,781.25	-30.41	227.93	228.14	0.00	0.00	0.00
1,819.03	9.94	97.60	1,800.00	-30.85	231.18	231.40	0.00	0.00	0.00
9 5/8"									
1,900.00	9.94	97.60	1,879.75	-32.69	245.04	245.27	0.00	0.00	0.00
2,000.00	9.94	97.60	1,978.25	-34.98	262.15	262.39	0.00	0.00	0.00
2,100.00	9.94	97.60	2,076.75	-37.26	279.26	279.52	0.00	0.00	0.00
2,200.00	9.94	97.60	2,175.25	-39.54	296.37	296.65	0.00	0.00	0.00
2,300.00	9.94	97.60	2,273.75	-41.83	313.48	313.77	0.00	0.00	0.00
2,400.00	9.94	97.60	2,372.25	-44.11	330.59	330.90	0.00	0.00	0.00
2,500.00	9.94	97.60	2,470.75	-46.39	347.70	348.03	0.00	0.00	0.00
2,600.00	9.94	97.60	2,569.25	-48.68	364.81	365.15	0.00	0.00	0.00
2,700.00	9.94	97.60	2,667.74	-50.96	381.92	382.28	0.00	0.00	0.00
2,800.00	9.94	97.60	2,766.24	-53.24	399.03	399.40	0.00	0.00	0.00
2,900.00	9.94	97.60	2,864.74	-55.52	416.14	416.53	0.00	0.00	0.00
3,000.00	9.94	97.60	2,963.24	-57.81	433.25	433.66	0.00	0.00	0.00
3,100.00	9.94	97.60	3,061.74	-60.09	450.36	450.78	0.00	0.00	0.00
3,200.00	9.94	97.60	3,160.24	-62.37	467.47	467.91	0.00	0.00	0.00
3,300.00	9.94	97.60	3,258.74	-64.66	484.58	485.03	0.00	0.00	0.00
3,400.00	9.94	97.60	3,357.24	-66.94	501.69	502.16	0.00	0.00	0.00
3,500.00	9.94	97.60	3,455.74	-69.22	518.80	519.29	0.00	0.00	0.00
3,600.00	9.94	97.60	3,554.23	-71.51	535.91	536.41	0.00	0.00	0.00
3,700.00	9.94	97.60	3,652.73	-73.79	553.02	553.54	0.00	0.00	0.00
3,800.00	9.94	97.60	3,751.23	-76.07	570.13	570.67	0.00	0.00	0.00
3,900.00	9.94	97.60	3,849.73	-78.35	587.24	587.79	0.00	0.00	0.00
4,000.00	9.94	97.60	3,948.23	-80.64	604.35	604.92	0.00	0.00	0.00
4,100.00	9.94	97.60	4,046.73	-82.92	621.46	622.04	0.00	0.00	0.00
4,200.00	9.94	97.60	4,145.23	-85.20	638.57	639.17	0.00	0.00	0.00
4,300.00	9.94	97.60	4,243.73	-87.49	655.68	656.30	0.00	0.00	0.00
4,400.00	9.94	97.60	4,342.23	-89.77	672.79	673.42	0.00	0.00	0.00
4,500.00	9.94	97.60	4,440.72	-92.05	689.90	690.55	0.00	0.00	0.00
4,600.00	9.94	97.60	4,539.22	-94.34	707.01	707.68	0.00	0.00	0.00

# Hewlett-Packard

## Planning Report

<b>Database:</b>	EDM 5000.14 Single User Db	<b>Local Co-ordinate Reference:</b>	Well VOLT 14N-3B-L
<b>Company:</b>	SRC ENERGY	<b>TVD Reference:</b>	RKB = 4' @ 4818.00usft (IKON 12)
<b>Project:</b>	WELD COUNTY (NAD83, TRUE NORTH)	<b>MD Reference:</b>	RKB = 4' @ 4818.00usft (IKON 12)
<b>Site:</b>	5N-66W-05 VOLT 19-5 PAD	<b>North Reference:</b>	True
<b>Well:</b>	VOLT 14N-3B-L	<b>Survey Calculation Method:</b>	Minimum Curvature
<b>Wellbore:</b>	Wellbore #1		
<b>Design:</b>	Design #1		

Planned Survey									
Measured Depth (usft)	Inclination (°)	Azimuth (°)	Vertical Depth (usft)	+N/-S (usft)	+E/-W (usft)	Vertical Section (usft)	Dogleg Rate (°/100usft)	Build Rate (°/100usft)	Turn Rate (°/100usft)
4,700.00	9.94	97.60	4,637.72	-96.62	724.12	724.80	0.00	0.00	0.00
4,800.00	9.94	97.60	4,736.22	-98.90	741.23	741.93	0.00	0.00	0.00
4,900.00	9.94	97.60	4,834.72	-101.18	758.34	759.05	0.00	0.00	0.00
5,000.00	9.94	97.60	4,933.22	-103.47	775.45	776.18	0.00	0.00	0.00
5,100.00	9.94	97.60	5,031.72	-105.75	792.56	793.31	0.00	0.00	0.00
5,200.00	9.94	97.60	5,130.22	-108.03	809.67	810.43	0.00	0.00	0.00
5,300.00	9.94	97.60	5,228.72	-110.32	826.78	827.56	0.00	0.00	0.00
5,400.00	9.94	97.60	5,327.21	-112.60	843.89	844.68	0.00	0.00	0.00
5,500.00	9.94	97.60	5,425.71	-114.88	861.00	861.81	0.00	0.00	0.00
5,600.00	9.94	97.60	5,524.21	-117.16	878.11	878.94	0.00	0.00	0.00
5,700.00	9.94	97.60	5,622.71	-119.45	895.22	896.06	0.00	0.00	0.00
5,800.00	9.94	97.60	5,721.21	-121.73	912.33	913.19	0.00	0.00	0.00
5,900.00	9.94	97.60	5,819.71	-124.01	929.44	930.32	0.00	0.00	0.00
6,000.00	9.94	97.60	5,918.21	-126.30	946.55	947.44	0.00	0.00	0.00
6,100.00	9.94	97.60	6,016.71	-128.58	963.66	964.57	0.00	0.00	0.00
6,200.00	9.94	97.60	6,115.21	-130.86	980.77	981.69	0.00	0.00	0.00
6,300.00	9.94	97.60	6,213.70	-133.15	997.88	998.82	0.00	0.00	0.00
6,400.00	9.94	97.60	6,312.20	-135.43	1,014.99	1,015.95	0.00	0.00	0.00
6,500.00	9.94	97.60	6,410.70	-137.71	1,032.10	1,033.07	0.00	0.00	0.00
6,600.00	9.94	97.60	6,509.20	-139.99	1,049.21	1,050.20	0.00	0.00	0.00
6,692.57	9.94	97.60	6,600.38	-142.11	1,065.05	1,066.05	0.00	0.00	0.00
<b>KOP @ 6692.57ft :: DLS = 9°/100'</b>									
6,700.00	10.60	97.09	6,607.69	-142.28	1,066.36	1,067.37	9.00	8.92	-6.86
6,800.00	19.56	93.57	6,704.15	-144.46	1,092.25	1,093.27	9.00	8.96	-3.52
6,900.00	28.54	92.21	6,795.38	-146.42	1,132.92	1,133.95	9.00	8.98	-1.36
7,000.00	37.53	91.46	6,879.12	-148.13	1,187.35	1,188.40	9.00	8.99	-0.75
7,100.00	46.53	90.97	6,953.32	-149.53	1,254.22	1,255.28	9.00	8.99	-0.49
7,200.00	55.52	90.61	7,016.16	-150.58	1,331.88	1,332.94	9.00	9.00	-0.36
7,300.00	64.52	90.32	7,066.07	-151.28	1,418.41	1,419.47	9.00	9.00	-0.29
7,400.00	73.52	90.07	7,101.84	-151.59	1,511.68	1,512.74	9.00	9.00	-0.25
7,500.00	82.51	89.84	7,122.58	-151.50	1,609.40	1,610.46	9.00	9.00	-0.23
7,586.04	90.26	89.65	7,128.00	-151.12	1,695.21	1,696.26	9.00	9.00	-0.22
<b>End Build @ 7586.04ft - Production Zone Top</b>									
7,600.00	90.26	89.65	7,127.94	-151.04	1,709.16	1,710.22	0.00	0.00	0.00
7,700.00	90.26	89.65	7,127.49	-150.43	1,809.16	1,810.21	0.00	0.00	0.00
7,800.00	90.26	89.65	7,127.05	-149.82	1,909.16	1,910.20	0.00	0.00	0.00
7,900.00	90.26	89.65	7,126.60	-149.22	2,009.16	2,010.19	0.00	0.00	0.00
8,000.00	90.26	89.65	7,126.16	-148.61	2,109.15	2,110.18	0.00	0.00	0.00
8,100.00	90.26	89.65	7,125.71	-148.00	2,209.15	2,210.17	0.00	0.00	0.00
8,200.00	90.26	89.65	7,125.26	-147.39	2,309.15	2,310.16	0.00	0.00	0.00
8,300.00	90.26	89.65	7,124.82	-146.79	2,409.14	2,410.15	0.00	0.00	0.00
8,400.00	90.26	89.65	7,124.37	-146.18	2,509.14	2,510.14	0.00	0.00	0.00
8,500.00	90.26	89.65	7,123.92	-145.57	2,609.14	2,610.13	0.00	0.00	0.00
8,600.00	90.26	89.65	7,123.48	-144.96	2,709.14	2,710.12	0.00	0.00	0.00
8,700.00	90.26	89.65	7,123.03	-144.36	2,809.13	2,810.11	0.00	0.00	0.00
8,800.00	90.26	89.65	7,122.59	-143.75	2,909.13	2,910.10	0.00	0.00	0.00
8,900.00	90.26	89.65	7,122.14	-143.14	3,009.13	3,010.09	0.00	0.00	0.00
9,000.00	90.26	89.65	7,121.69	-142.54	3,109.12	3,110.08	0.00	0.00	0.00
9,100.00	90.26	89.65	7,121.25	-141.93	3,209.12	3,210.07	0.00	0.00	0.00
9,200.00	90.26	89.65	7,120.80	-141.32	3,309.12	3,310.06	0.00	0.00	0.00
9,300.00	90.26	89.65	7,120.35	-140.71	3,409.12	3,410.05	0.00	0.00	0.00
9,400.00	90.26	89.65	7,119.91	-140.11	3,509.11	3,510.04	0.00	0.00	0.00
9,500.00	90.26	89.65	7,119.46	-139.50	3,609.11	3,610.03	0.00	0.00	0.00
9,600.00	90.26	89.65	7,119.02	-138.89	3,709.11	3,710.02	0.00	0.00	0.00

# Hewlett-Packard

## Planning Report

<b>Database:</b>	EDM 5000.14 Single User Db	<b>Local Co-ordinate Reference:</b>	Well VOLT 14N-3B-L
<b>Company:</b>	SRC ENERGY	<b>TVD Reference:</b>	RKB = 4' @ 4818.00usft (IKON 12)
<b>Project:</b>	WELD COUNTY (NAD83, TRUE NORTH)	<b>MD Reference:</b>	RKB = 4' @ 4818.00usft (IKON 12)
<b>Site:</b>	5N-66W-05 VOLT 19-5 PAD	<b>North Reference:</b>	True
<b>Well:</b>	VOLT 14N-3B-L	<b>Survey Calculation Method:</b>	Minimum Curvature
<b>Wellbore:</b>	Wellbore #1		
<b>Design:</b>	Design #1		

Planned Survey										
Measured Depth (usft)	Inclination (°)	Azimuth (°)	Vertical Depth (usft)	+N/-S (usft)	+E/-W (usft)	Vertical Section (usft)	Dogleg Rate (°/100usft)	Build Rate (°/100usft)	Turn Rate (°/100usft)	
9,700.00	90.26	89.65	7,118.57	-138.28	3,809.11	3,810.01	0.00	0.00	0.00	
9,800.00	90.26	89.65	7,118.12	-137.68	3,909.10	3,910.00	0.00	0.00	0.00	
9,900.00	90.26	89.65	7,117.68	-137.07	4,009.10	4,009.99	0.00	0.00	0.00	
10,000.00	90.26	89.65	7,117.23	-136.46	4,109.10	4,109.98	0.00	0.00	0.00	
10,100.00	90.26	89.65	7,116.78	-135.85	4,209.09	4,209.97	0.00	0.00	0.00	
10,200.00	90.26	89.65	7,116.34	-135.25	4,309.09	4,309.96	0.00	0.00	0.00	
10,300.00	90.26	89.65	7,115.89	-134.64	4,409.09	4,409.95	0.00	0.00	0.00	
10,400.00	90.26	89.65	7,115.44	-134.03	4,509.09	4,509.94	0.00	0.00	0.00	
10,500.00	90.26	89.65	7,115.00	-133.42	4,609.08	4,609.93	0.00	0.00	0.00	
10,600.00	90.26	89.65	7,114.55	-132.82	4,709.08	4,709.92	0.00	0.00	0.00	
10,700.00	90.26	89.65	7,114.11	-132.21	4,809.08	4,809.91	0.00	0.00	0.00	
10,800.00	90.26	89.65	7,113.66	-131.60	4,909.07	4,909.90	0.00	0.00	0.00	
10,900.00	90.26	89.65	7,113.21	-130.99	5,009.07	5,009.89	0.00	0.00	0.00	
11,000.00	90.26	89.65	7,112.77	-130.39	5,109.07	5,109.88	0.00	0.00	0.00	
11,100.00	90.26	89.65	7,112.32	-129.78	5,209.07	5,209.87	0.00	0.00	0.00	
11,200.00	90.26	89.65	7,111.87	-129.17	5,309.06	5,309.86	0.00	0.00	0.00	
11,300.00	90.26	89.65	7,111.43	-128.56	5,409.06	5,409.85	0.00	0.00	0.00	
11,400.00	90.26	89.65	7,110.98	-127.96	5,509.06	5,509.84	0.00	0.00	0.00	
11,500.00	90.26	89.65	7,110.54	-127.35	5,609.05	5,609.83	0.00	0.00	0.00	
11,600.00	90.26	89.65	7,110.09	-126.74	5,709.05	5,709.82	0.00	0.00	0.00	
11,700.00	90.26	89.65	7,109.64	-126.13	5,809.05	5,809.81	0.00	0.00	0.00	
11,800.00	90.26	89.65	7,109.20	-125.53	5,909.05	5,909.80	0.00	0.00	0.00	
11,900.00	90.26	89.65	7,108.75	-124.92	6,009.04	6,009.79	0.00	0.00	0.00	
12,000.00	90.26	89.65	7,108.30	-124.31	6,109.04	6,109.78	0.00	0.00	0.00	
12,100.00	90.26	89.65	7,107.86	-123.71	6,209.04	6,209.77	0.00	0.00	0.00	
12,200.00	90.26	89.65	7,107.41	-123.10	6,309.03	6,309.76	0.00	0.00	0.00	
12,300.00	90.26	89.65	7,106.96	-122.49	6,409.03	6,409.75	0.00	0.00	0.00	
12,400.00	90.26	89.65	7,106.52	-121.88	6,509.03	6,509.74	0.00	0.00	0.00	
12,500.00	90.26	89.65	7,106.07	-121.28	6,609.03	6,609.73	0.00	0.00	0.00	
12,600.00	90.26	89.65	7,105.63	-120.67	6,709.02	6,709.72	0.00	0.00	0.00	
12,700.00	90.26	89.65	7,105.18	-120.06	6,809.02	6,809.71	0.00	0.00	0.00	
12,800.00	90.26	89.65	7,104.73	-119.45	6,909.02	6,909.70	0.00	0.00	0.00	
12,900.00	90.26	89.65	7,104.29	-118.85	7,009.01	7,009.69	0.00	0.00	0.00	
13,000.00	90.26	89.65	7,103.84	-118.24	7,109.01	7,109.68	0.00	0.00	0.00	
13,100.00	90.26	89.65	7,103.39	-117.63	7,209.01	7,209.67	0.00	0.00	0.00	
13,200.00	90.26	89.65	7,102.95	-117.02	7,309.01	7,309.66	0.00	0.00	0.00	
13,300.00	90.26	89.65	7,102.50	-116.42	7,409.00	7,409.65	0.00	0.00	0.00	
13,400.00	90.26	89.65	7,102.06	-115.81	7,509.00	7,509.64	0.00	0.00	0.00	
13,500.00	90.26	89.65	7,101.61	-115.20	7,609.00	7,609.63	0.00	0.00	0.00	
13,600.00	90.26	89.65	7,101.16	-114.59	7,708.99	7,709.62	0.00	0.00	0.00	
13,700.00	90.26	89.65	7,100.72	-113.99	7,808.99	7,809.61	0.00	0.00	0.00	
13,800.00	90.26	89.65	7,100.27	-113.38	7,908.99	7,909.60	0.00	0.00	0.00	
13,900.00	90.26	89.65	7,099.82	-112.77	8,008.99	8,009.59	0.00	0.00	0.00	
14,000.00	90.26	89.65	7,099.38	-112.16	8,108.98	8,109.58	0.00	0.00	0.00	
14,100.00	90.26	89.65	7,098.93	-111.56	8,208.98	8,209.57	0.00	0.00	0.00	
14,200.00	90.26	89.65	7,098.49	-110.95	8,308.98	8,309.56	0.00	0.00	0.00	
14,300.00	90.26	89.65	7,098.04	-110.34	8,408.97	8,409.55	0.00	0.00	0.00	
14,400.00	90.26	89.65	7,097.59	-109.73	8,508.97	8,509.54	0.00	0.00	0.00	
14,500.00	90.26	89.65	7,097.15	-109.13	8,608.97	8,609.53	0.00	0.00	0.00	
14,600.00	90.26	89.65	7,096.70	-108.52	8,708.97	8,709.52	0.00	0.00	0.00	
14,700.00	90.26	89.65	7,096.25	-107.91	8,808.96	8,809.51	0.00	0.00	0.00	
14,800.00	90.26	89.65	7,095.81	-107.30	8,908.96	8,909.50	0.00	0.00	0.00	
14,900.00	90.26	89.65	7,095.36	-106.70	9,008.96	9,009.49	0.00	0.00	0.00	
15,000.00	90.26	89.65	7,094.91	-106.09	9,108.95	9,109.48	0.00	0.00	0.00	

# Hewlett-Packard

## Planning Report

<b>Database:</b>	EDM 5000.14 Single User Db	<b>Local Co-ordinate Reference:</b>	Well VOLT 14N-3B-L
<b>Company:</b>	SRC ENERGY	<b>TVD Reference:</b>	RKB = 4' @ 4818.00usft (IKON 12)
<b>Project:</b>	WELD COUNTY (NAD83, TRUE NORTH)	<b>MD Reference:</b>	RKB = 4' @ 4818.00usft (IKON 12)
<b>Site:</b>	5N-66W-05 VOLT 19-5 PAD	<b>North Reference:</b>	True
<b>Well:</b>	VOLT 14N-3B-L	<b>Survey Calculation Method:</b>	Minimum Curvature
<b>Wellbore:</b>	Wellbore #1		
<b>Design:</b>	Design #1		

Planned Survey										
Measured Depth (usft)	Inclination (°)	Azimuth (°)	Vertical Depth (usft)	+N/-S (usft)	+E/-W (usft)	Vertical Section (usft)	Dogleg Rate (°/100usft)	Build Rate (°/100usft)	Turn Rate (°/100usft)	
15,100.00	90.26	89.65	7,094.47	-105.48	9,208.95	9,209.47	0.00	0.00	0.00	
15,200.00	90.26	89.65	7,094.02	-104.88	9,308.95	9,309.47	0.00	0.00	0.00	
15,300.00	90.26	89.65	7,093.58	-104.27	9,408.95	9,409.46	0.00	0.00	0.00	
15,400.00	90.26	89.65	7,093.13	-103.66	9,508.94	9,509.45	0.00	0.00	0.00	
15,500.00	90.26	89.65	7,092.68	-103.05	9,608.94	9,609.44	0.00	0.00	0.00	
15,600.00	90.26	89.65	7,092.24	-102.45	9,708.94	9,709.43	0.00	0.00	0.00	
15,700.00	90.26	89.65	7,091.79	-101.84	9,808.93	9,809.42	0.00	0.00	0.00	
15,800.00	90.26	89.65	7,091.34	-101.23	9,908.93	9,909.41	0.00	0.00	0.00	
15,900.00	90.26	89.65	7,090.90	-100.62	10,008.93	10,009.40	0.00	0.00	0.00	
16,000.00	90.26	89.65	7,090.45	-100.02	10,108.93	10,109.39	0.00	0.00	0.00	
16,100.00	90.26	89.65	7,090.01	-99.41	10,208.92	10,209.38	0.00	0.00	0.00	
16,200.00	90.26	89.65	7,089.56	-98.80	10,308.92	10,309.37	0.00	0.00	0.00	
16,300.00	90.26	89.65	7,089.11	-98.19	10,408.92	10,409.36	0.00	0.00	0.00	
16,400.00	90.26	89.65	7,088.67	-97.59	10,508.91	10,509.35	0.00	0.00	0.00	
16,500.00	90.26	89.65	7,088.22	-96.98	10,608.91	10,609.34	0.00	0.00	0.00	
16,600.00	90.26	89.65	7,087.77	-96.37	10,708.91	10,709.33	0.00	0.00	0.00	
16,700.00	90.26	89.65	7,087.33	-95.76	10,808.91	10,809.32	0.00	0.00	0.00	
16,800.00	90.26	89.65	7,086.88	-95.16	10,908.90	10,909.31	0.00	0.00	0.00	
16,900.00	90.26	89.65	7,086.43	-94.55	11,008.90	11,009.30	0.00	0.00	0.00	
17,000.00	90.26	89.65	7,085.99	-93.94	11,108.90	11,109.29	0.00	0.00	0.00	
17,100.00	90.26	89.65	7,085.54	-93.33	11,208.89	11,209.28	0.00	0.00	0.00	
17,200.00	90.26	89.65	7,085.10	-92.73	11,308.89	11,309.27	0.00	0.00	0.00	
17,300.00	90.26	89.65	7,084.65	-92.12	11,408.89	11,409.26	0.00	0.00	0.00	
17,400.00	90.26	89.65	7,084.20	-91.51	11,508.89	11,509.25	0.00	0.00	0.00	
17,500.00	90.26	89.65	7,083.76	-90.90	11,608.88	11,609.24	0.00	0.00	0.00	
17,600.00	90.26	89.65	7,083.31	-90.30	11,708.88	11,709.23	0.00	0.00	0.00	
17,700.00	90.26	89.65	7,082.86	-89.69	11,808.88	11,809.22	0.00	0.00	0.00	
17,800.00	90.26	89.65	7,082.42	-89.08	11,908.88	11,909.21	0.00	0.00	0.00	
17,893.68	90.26	89.65	7,082.00	-88.51	12,002.55	12,002.88	0.00	0.00	0.00	
Bottom of Production @ 17893.68ft										
17,900.00	90.26	89.65	7,081.97	-88.47	12,008.87	12,009.20	0.00	0.00	0.00	
17,993.68	90.26	89.65	7,081.55	-87.91	12,102.55	12,102.87	0.00	0.00	0.00	
TD Well @ 17993.68ft										

Casing Points					
Measured Depth (usft)	Vertical Depth (usft)	Name	Casing Diameter (")	Hole Diameter (")	
1,819.03	1,800.00	9 5/8"	9-5/8	13-1/2	
7,586.04	7,128.00	Production Zone Top	5-1/2	8-1/2	



# Hewlett-Packard

## Planning Report

<b>Database:</b>	EDM 5000.14 Single User Db	<b>Local Co-ordinate Reference:</b>	Well VOLT 14N-3B-L
<b>Company:</b>	SRC ENERGY	<b>TVD Reference:</b>	RKB = 4' @ 4818.00usft (IKON 12)
<b>Project:</b>	WELD COUNTY (NAD83, TRUE NORTH)	<b>MD Reference:</b>	RKB = 4' @ 4818.00usft (IKON 12)
<b>Site:</b>	5N-66W-05 VOLT 19-5 PAD	<b>North Reference:</b>	True
<b>Well:</b>	VOLT 14N-3B-L	<b>Survey Calculation Method:</b>	Minimum Curvature
<b>Wellbore:</b>	Wellbore #1		
<b>Design:</b>	Design #1		

Plan Annotations				
Measured Depth (usft)	Vertical Depth (usft)	Local Coordinates		Comment
		+N/-S (usft)	+E/-W (usft)	
220.00	220.00	0.00	0.00	Begin Nudge @ 220.00ft
717.00	714.51	-5.69	42.63	Hold Tangent @ 717.00ft
6,692.57	6,600.38	-142.11	1,065.05	KOP @ 6692.57ft :: DLS = 9°/100'
7,586.04	7,128.00	-151.12	1,695.20	End Build @ 7586.04ft
17,893.68	7,082.00	-88.51	12,002.55	Bottom of Production @ 17893.68ft
17,993.68	7,081.55	-87.91	12,102.55	TD Well @ 17993.68ft