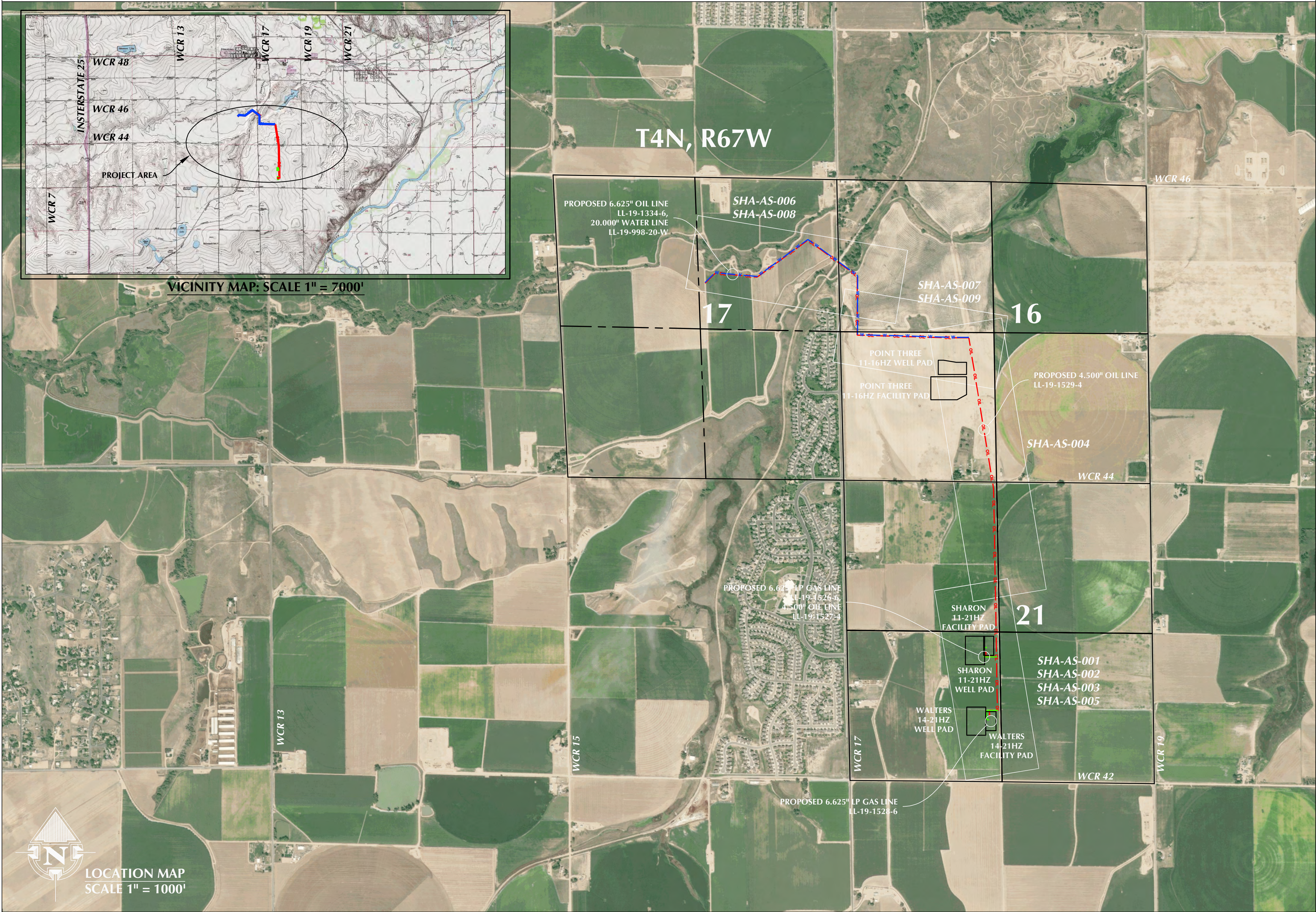


# AREA MAP



## INDEX OF DRAWINGS

DRAWING NUMBER	DESCRIPTION	REVISION	STATUS
GWA-SHA-AM-001	AREA MAP	0	ISSUED FOR REVIEW
GWA-SHA-AM-001A	RAPTOR NESTING BOUNDARIES	0	ISSUED FOR REVIEW
SHA-AS-001	SHARON 11-21HZ 6\" GAS LINE STA 0+00 - 4+31.7	0	ISSUED FOR REVIEW
SHA-AS-002	WALTERS 14-21HZ 6\" GAS LINE STA 0+00 - 3+88.7	0	ISSUED FOR REVIEW
SHA-AS-003	SHARON 11-21HZ 4\" OIL LINE STA 0+00 - 2+63.6	0	ISSUED FOR REVIEW
SHA-AS-004	WALTERS 14-21HZ 4\" OIL LINE STA 0+00 - 44+00	0	ISSUED FOR REVIEW
SHA-AS-005	WALTERS 14-21HZ 4\" OIL LINE 44+00 - 67+76.8	0	ISSUED FOR REVIEW
SHA-AS-006	SHARON & WALTERS 6\" OIL LINE STA 0+00 - 38+00	0	ISSUED FOR REVIEW
SHA-AS-007	SHARON & WALTERS 6\" OIL LINE STA 38+00 - 61+54.1	0	ISSUED FOR REVIEW
SHA-AS-008	SHARON & WALTERS 20\" WATER LINE STA 0+00 - 38+00	0	ISSUED FOR REVIEW
SHA-AS-009	SHARON & WALTERS 20\" WATER LINE STA 38+00 - 61+50.7	0	ISSUED FOR REVIEW

## GENERAL INFORMATION

- ALL BEARINGS, DISTANCES AND COORDINATE VALUES CONTAINED HEREON ARE GRID BASED UPON THE COLORADO STATE PLANE COORDINATE SYSTEM, NORTH ZONE OF NAD83, U.S. SURVEY FEET.
- INFORMATION PROVIDED FOR UNDERGROUND UTILITIES WITHIN THE PROJECT AREA WAS OBTAINED FROM ANADARKO PETROLEUM PERSONNEL IN ADDITION TO AN ENGINEERING GRADE ONE-CALL UTILITY LOCATE AND MAY NOT INCLUDE ALL UNDERGROUND UTILITIES PRESENT IN PROJECT AREA. CONTRACTOR SHALL VERIFY DEPTH, SIZE, AND MATERIAL TYPE OF UNDERGROUND UTILITIES, WHERE NOT DEPICTED ON DRAWINGS. CONTRACTOR SHALL NOT BEGIN EXCAVATION WITHOUT FIRST NOTIFYING THE ONE-CALL CENTER OF EXCAVATION AT LEAST 2 FULL BUSINESS DAYS PRIOR TO ANY EXCAVATION OCCURRING.

CONTRACTOR SHALL, AT THEIR EXPENSE, USE REASONABLE CARE HAND DIGGING, AS NECESSARY, TO PROTECT THE EXISTING UNDERGROUND UTILITIES ENCOUNTERED AND WILL BE REQUIRED TO PROVIDE REASONABLE NOTICE TO UNDERGROUND UTILITY OWNERS WITHIN THE AREA, INCLUDING: 48 HOUR ADVANCE SCHEDULING FOR WORK TO BE PERFORMED WITHIN 10 FEET OF APC PIPELINES OR OTHER APPLICABLE UNDERGROUND UTILITY OWNERS.

IF ANY CONTACT WITH OR DAMAGE TO ANY UNDERGROUND FACILITY SHOULD OCCUR, THE CONTRACTOR SHALL IMMEDIATELY NOTIFY THE UNDERGROUND UTILITY OWNER OF THE FACILITY AND THE ONE CALL CENTER OF THE LOCATION OF AND EXTENT OF DAMAGE TO THE UNDERGROUND UTILITY AND SHALL COOPERATE WITH THE OWNER OF THE DAMAGED UNDERGROUND UTILITY TO MITIGATE THE DAMAGES INCURRED TO THE EXTENT REASONABLY POSSIBLE. IN ANY DISPUTE CONCERNING THE LIABILITY FOR DAMAGES TO ANY UNDERGROUND UTILITY, THE CONTRACTOR SHALL BEAR THE BURDEN OF PROOF CONCERNING ITS USE OF REASONABLE CARE IN CONDUCTING THE EXCAVATION.

## PROJECT SUMMARY

ITEM	DESCRIPTION	QTY
①	CID:P10614, LINE #LL-19-1526-6, 6.625\" PIPE, SCH STD (0.280\"), API 5L PSL2 SMLS or ERW, X-52, FBE COATED, 14-16 MILS PER NACE RP0394, 18.97 lb./ft.	432'
②	CID:P10614, LINE #LL-19-1526-6, 6.625\" PIPE, SCH STD (0.280\"), API 5L PSL2 SMLS or ERW, X-52, FBE COATED, 14-16 MILS PER NACE RP0394 w/ 30 MILS ARO, 18.97 lb./ft.	0'
③	CID:P10614, LINE #LL-19-1526-6, 6\" 90 DEG SEGMENTABLE 3D ELL, BW, SCH STD (0.280\"), MSS SP-75, WPHY-52, ASME B16.9, TUBE FORGINGS OF AMERICA (TFA)	2
④	INTENTIONALLY LEFT BLANK	-
⑤	CID:P10614, LINE #LL-19-1526-6, 6.625\" PIPE, SCH STD (0.280\"), API 5L PSL2 SMLS or ERW, X-52, FBE COATED, 14-16 MILS PER NACE RP0394, 18.97 lb./ft.	389'
⑥	CID:P10614, LINE #LL-19-1528-6, 6.625\" PIPE, SCH STD (0.280\"), API 5L PSL2 SMLS or ERW, X-52, FBE COATED, 14-16 MILS PER NACE RP0394 w/ 30 MILS ARO, 18.97 lb./ft.	0'
⑦	CID:P10614, LINE #LL-19-1528-6, 6\" 90 DEG SEGMENTABLE 3D ELL, BW, SCH STD (0.280\"), MSS SP-75, WPHY-52, ASME B16.9, TUBE FORGINGS OF AMERICA (TFA)	2
⑧	INTENTIONALLY LEFT BLANK	-
⑨	CID:P10363, LINE #LL-19-1527-4, 4.500\" PIPE, SCH STD (0.237\"), API 5L PSL2 SMLS or ERW, X-52, FBE COATED, 14-16 MILS PER NACE RP0394, 10.79 lb./ft.	264'
⑩	CID:P10363, LINE #LL-19-1527-4, 4.500\" PIPE, SCH STD (0.237\"), API 5L PSL2 SMLS or ERW, X-52, FBE COATED, 14-16 MILS PER NACE RP0394, w/ 30 MILS ARO, 10.79 lb./ft.	0'
⑪	CID:P10363, LINE #LL-19-1527-4, 4\" 90 DEG, SEGMENTABLE 3R ELL, BW, SCH STD (0.237\"), MSS SP-75, WPHY-52, ASME B16.9, TUBE FORGINGS OF AMERICA (TFA)	1
⑫	INTENTIONALLY LEFT BLANK	-
⑬	CID:P10363, LINE #LL-19-1529-4, 4.500\" PIPE, SCH STD (0.237\"), API 5L PSL2 SMLS or ERW, X-52, FBE COATED, 14-16 MILS PER NACE RP0394, 10.79 lb./ft.	6,575'
⑭	CID:P10363, LINE #LL-19-1529-4, 4.500\" PIPE, SCH STD (0.237\"), API 5L PSL2 SMLS or ERW, X-52, FBE COATED, 14-16 MILS PER NACE RP0394, w/ 30 MILS ARO, 10.79 lb./ft.	202'
⑮	CID:P10363, LINE #LL-19-1529-4, 4\" 90 DEG, SEGMENTABLE 3R ELL, BW, SCH STD (0.237\"), MSS SP-75, WPHY-52, ASME B16.9, TUBE FORGINGS OF AMERICA (TFA)	2
⑯	INTENTIONALLY LEFT BLANK	-
⑰	CID:P10363, LINE #LL-19-1334-6, 6.625\" PIPE, SCH STD (0.280\"), API 5L PSL2 SMLS or ERW, X-52, FBE COATED, 14-16 MILS PER NACE RP0394, 10.79 lb./ft.	5,401'
⑱	CID:P10363, LINE #LL-19-1334-6, 6.625\" PIPE, SCH STD (0.280\"), API 5L PSL2 SMLS or ERW, X-52, FBE COATED, 14-16 MILS PER NACE RP0394, w/ 30 MILS ARO, 10.79 lb./ft.	777'
⑲	CID:P10363, LINE #LL-19-1334-6, 6\" 90 DEG, SEGMENTABLE 3R ELL, BW, SCH STD (0.280\"), MSS SP-75, WPHY-52, ASME B16.9, TUBE FORGINGS OF AMERICA (TFA)	5
⑳	INTENTIONALLY LEFT BLANK	-
㉑	CID:TBD, LINE #LL-19-998-20-W, 20.000\" PIPE,HDPE, SDR-11, PE4710, AWWA C906, ASTM F714, WITH TRACER WIRE, 45.49 lb./ft.	6,170'
㉒	CID:TBD, LINE #LL-19-998-20-W, 20\" 90 DEG, SEGMENTABLE ELL SMYS TYPO, HDPE, SDR-11, PE4710, AWWA C906, ASTM F714, WITH TRACER WIRE	5
㉓	INTENTIONALLY LEFT BLANK	-
㉔	PIPELINE MARKERS - PER TYPICAL DRAWING (GWA-CPT-001)	33
㉕	FOREIGN PIPELINE CROSSINGS - (LOCATIONS TBD) PER TYPICAL DRAWING (GWA-CPT-004)	16
㉖	CATHODIC PROTECTION TEST POINT - PER TYPICAL DRAWING (GWA-CPT-005)	TBD
㉗	HIGH POTENTIAL 17 LB. MAGNESIUM ANODE (GWA-CPT-011)	TBD

### GENERAL INFORMATION:

- AERIAL IMAGERY COURTESY OF ESRI, INC.
- SEE DRAWING PACKAGE FOR FULL LIST OF REFERENCE DRAWINGS

ORIGINAL DOCUMENT SIZE: 22"x34"

DATE: 4/3/19

### REFERENCE DRAWINGS

DRAWING NAME	DESCRIPTION

### DRAWING REVISIONS

REV.	DATE	DESCRIPTION
0	4/3/19	ISSUED FOR REVIEW (IFR)



LOVELAND OFFICE  
6706 North Franklin Avenue  
Loveland, Colorado 80538  
Phone 970-776-4331

SHERIDAN OFFICE  
1095 Saberton Avenue  
Sheridan, Wyoming 82801  
Phone 307-674-0609

CONSULTING, LLC



### ISSUED FOR REVIEW

SHARON 11-21HZ & WALTERS 14-21HZ  
WELL CONNECT  
LOCATED IN  
SECTIONS 16, 17 & 21, T4N, R67W, 6TH P.M.  
WELD COUNTY, COLORADO

GWA-SHA-AM-001



OWNERSHIP		RONALD L. WALTER 431.74 FEET 26.17 RODS SEC. 21 T4N, R67W														
ALIGNMENT STATIONING	B.O.P. 0+00.0 0+10.8 PIPELINE PROPOSED OIL S 90°00'00" W 22.5' 0+36.3 BEGIN DITCH CROSSING S 90°00'00" W 9.1' 0+45.4 END DITCH CROSSING S 90°00'00" W 184.8' PI 2+30.2 90°00'00" LT N 00°00'00" E 166.1' PI 3+96.3 90°00'00" RT N 90°00'00" E 35.4' E.O.P. 4+31.7															
ALIGNMENT PLAN VIEW    SCALE 1" = 200'																
EASEMENT	<div>25' TEMPORARY</div> <div>50' PERMANENT</div> <div>EXISTING DISTURBANCE</div>															
ENGINEERING & MATERIALS	<div>6.625\"/&gt;</div>															
PROFILE SCALE 1" = 200' HORIZONTAL SCALE 1" = 40' VERTICAL																
GENERAL INFORMATION:				REFERENCE DRAWINGS				DRAWING REVISIONS								
<ul style="list-style-type: none"><li>• AERIAL IMAGERY COURTESY OF ESRI, INC.</li><li>• SEE DRAWING PACKAGE FOR FULL LIST OF REFERENCE DRAWINGS</li><li>• HORIZONTAL CLEARANCE - 10'-0" MINIMUM FROM ANY PIPE</li><li>• VERTICAL CLEARANCE - 2'-0" MINIMUM FROM ANY PIPE OR ELECTRICAL</li></ul> <p>ORIGINAL DOCUMENT SIZE: 22"x34"</p>				DRAWING NAME		DESCRIPTION		REV.	DATE	DESCRIPTION						
								0	4/3/19	ISSUED FOR REVIEW (IFR)						
SHEET: 1 OF 1				DATE: 4/3/19												
												LOVELAND OFFICE 6706 North Franklin Avenue Loveland, Colorado 80538 Phone 970-776-4331  SHERIDAN OFFICE 1095 Saberton Avenue Sheridan, Wyoming 82801 Phone 307-674-0609				
												ISSUED FOR REVIEW				
												SHARON 11-21HZ WELL CONNECT 6" GAS LINE ALIGNMENT SHEET STA. 0+00.0 TO 4+31.7				
												SHA-AS-001				











[illegible]















[illegible]



OWNERSHIP		ANADARKO E & P ONSHORE LLC 351.75 FEET 21.32 RODS SEC. 16, T4N, R67W		ANADARKO E & P ONSHORE LLC 1998.98 FEET 121.15 RODS SEC. 16, T4N, R67W							
ALIGNMENT STATIONING		<div>38+00 MATCH LINE S 00°00'00" W 334.3' 41+34.3 BEGIN ROAD CROSSING S 00°00'00" W 12.1' 41+46.4 END ROAD CROSSING S 00°00'00" W 5.3' 41+51.7 PROPERTY LINE S 00°00'00" W 15.2' PIPELINE CROSSING S 00°00'00" W 35.0' PI 42+01.9 88°22'51" LT S 88°22'51" E 1631.1' PI 58+33.0 01°26'11" LT S 89°49'02" E 317.7' E.O.P. 61+50.7</div>									
ALIGNMENT PLAN VIEW SCALE 1" = 200'											
EASEMENT	<div>50' PERMANENT 25' TEMPORARY</div>										
ENGINEERING & MATERIALS	<div>20.000" WATER TEST PRESSURE = 220 PSI MAOP = 220 PSI OSF = 0.63 CID = TBD</div> <div>38+00.0 401.9' 42+01.9 815.6' 50+17.5 815.5' 58+33.0 317.7' 61+50.7</div>										
PROFILE SCALE 1" = 200' HORIZONTAL SCALE 1" = 40' VERTICAL											
GENERAL INFORMATION:		REFERENCE DRAWINGS		DRAWING REVISIONS		609 CONSULTING, LLC		LOVELAND OFFICE 6706 North Franklin Avenue Loveland, Colorado 80538 Phone 970-776-4331  SHERIDAN OFFICE 1095 Saberton Avenue Sheridan, Wyoming 82801 Phone 307-674-0609		Anadarko Petroleum Corporation 1099 18th Street Denver, CO 80202	
• AERIAL IMAGERY COURTESY OF ESRI, INC. • SEE DRAWING PACKAGE FOR FULL LIST OF REFERENCE DRAWINGS • HORIZONTAL CLEARANCE - 10'-0" MINIMUM FROM ANY PIPE • VERTICAL CLEARANCE - 2'-0" MINIMUM FROM ANY PIPE OR ELECTRICAL  ORIGINAL DOCUMENT SIZE: 22"x34"		DRAWING NAME DESCRIPTION		REV. DATE DESCRIPTION		ISSUED FOR REVIEW (IFR)		ISSUED FOR REVIEW		SHARON & WALTERS WELL CONNECT 20" WATER LINE ALIGNMENT SHEET STA. 38+00.0 TO 61+50.7	
SHEET: 2 OF 2		DATE: 4/3/19						SHA-AS-009			