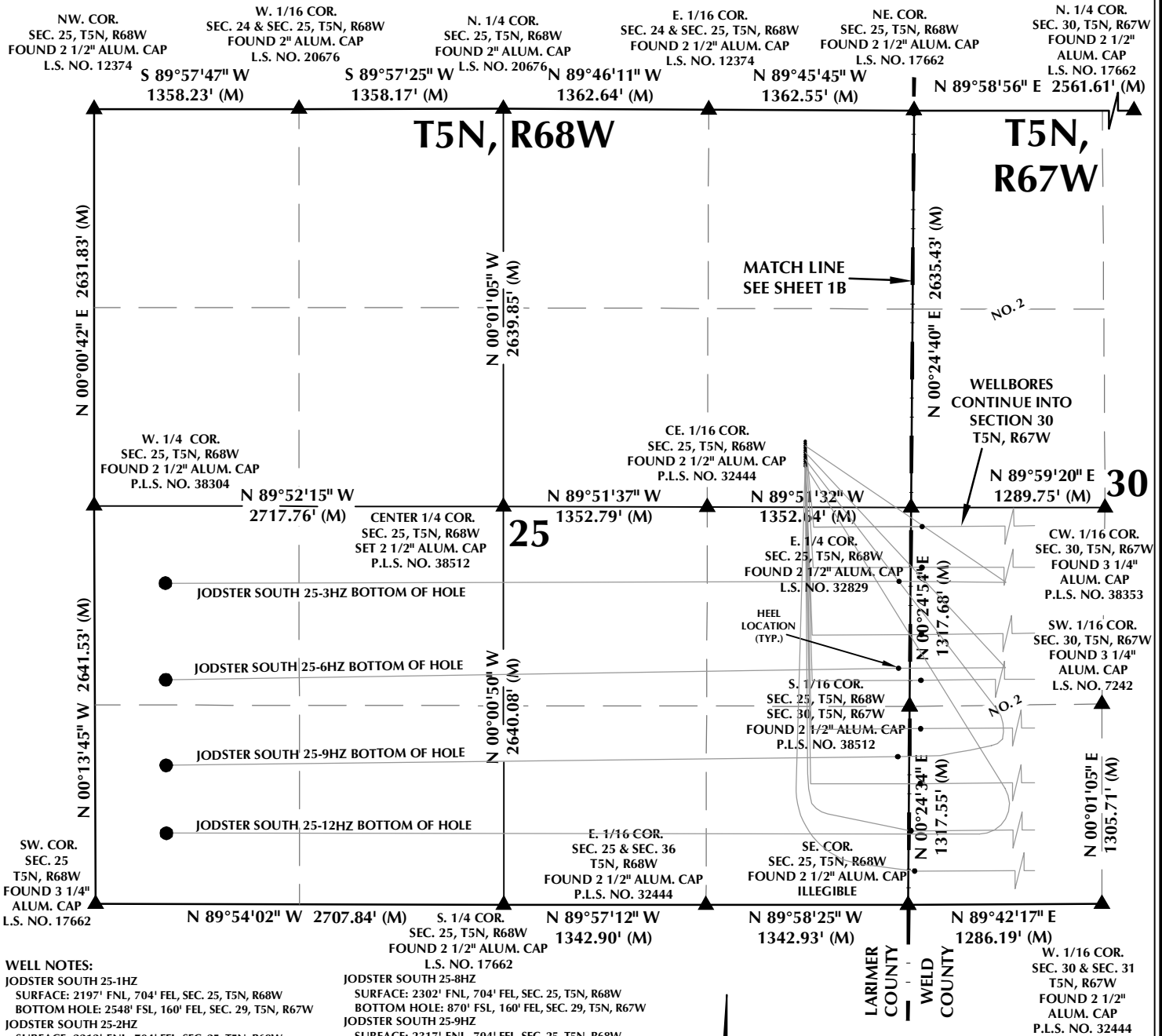


MULTI-WELL PLAN SECTIONS 25, T5N, R68W & 30, T5N, R67W



WELL NOTES:

JODSTER SOUTH 25-1HZ
SURFACE: 2197' FNL, 704' FEL, SEC. 25, T5N, R68W
BOTTOM HOLE: 2548' FSL, 160' FEL, SEC. 29, T5N, R67W

JODSTER SOUTH 25-2HZ
SURFACE: 2212' FNL, 704' FEL, SEC. 25, T5N, R68W
BOTTOM HOLE: 2232' FSL, 160' FEL, SEC. 29, T5N, R67W

JODSTER SOUTH 25-3HZ
SURFACE: 2227' FNL, 704' FEL, SEC. 25, T5N, R68W
BOTTOM HOLE: 2129' FSL, 470' FWL, SEC. 25, T5N, R68W

JODSTER SOUTH 25-4HZ
SURFACE: 2242' FNL, 704' FEL, SEC. 25, T5N, R68W
BOTTOM HOLE: 1870' FSL, 160' FEL, SEC. 29, T5N, R67W

JODSTER SOUTH 25-5HZ
SURFACE: 2257' FNL, 704' FEL, SEC. 25, T5N, R68W
BOTTOM HOLE: 1566' FSL, 160' FEL, SEC. 29, T5N, R67W

JODSTER SOUTH 25-6HZ
SURFACE: 2272' FNL, 704' FEL, SEC. 25, T5N, R68W
BOTTOM HOLE: 1487' FSL, 470' FWL, SEC. 25, T5N, R68W

JODSTER SOUTH 25-7HZ
SURFACE: 2287' FNL, 704' FEL, SEC. 25, T5N, R68W
BOTTOM HOLE: 1220' FSL, 160' FEL, SEC. 29, T5N, R67W

JODSTER SOUTH 25-8HZ
SURFACE: 2302' FNL, 704' FEL, SEC. 25, T5N, R68W
BOTTOM HOLE: 870' FSL, 160' FEL, SEC. 29, T5N, R67W

JODSTER SOUTH 25-9HZ
SURFACE: 2317' FNL, 704' FEL, SEC. 25, T5N, R68W
BOTTOM HOLE: 920' FSL, 470' FWL, SEC. 25, T5N, R68W

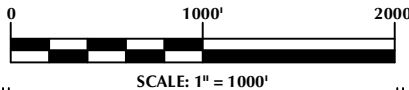
JODSTER SOUTH 25-10HZ
SURFACE: 2332' FNL, 704' FEL, SEC. 25, T5N, R68W
BOTTOM HOLE: 548' FSL, 160' FEL, SEC. 29, T5N, R67W

JODSTER SOUTH 25-11HZ
SURFACE: 2347' FNL, 704' FEL, SEC. 25, T5N, R68W
BOTTOM HOLE: 222' FSL, 161' FEL, SEC. 29, T5N, R67W

JODSTER SOUTH 25-12HZ
SURFACE: 2362' FNL, 704' FEL, SEC. 25, T5N, R68W
BOTTOM HOLE: 470' FSL, 470' FWL, SEC. 25, T5N, R68W

NOTES:

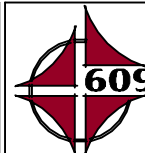
- ▲ INDICATES SECTION CORNER.
- INDICATES CALCULATED CORNER.
- BASIS OF BEARING DERIVED FROM COLORADO COORDINATE SYSTEM OF 1983 NORTH ZONE.
- ALL MEASURED DISTANCES ARE GRID.
- COMBINED SCALE FACTOR: .99972964 CALCULATED FROM THE E. 1/4 CORNER OF SECTION 25, T5N, R68W.
- WELL FOOTAGES ARE MEASURED AT RIGHT ANGLES TO THE SECTION LINES.
- NO. 2 AS SHOWN HEREON IS GOVERNMENT LOT 2 PER THE ORIGINAL GLO SURVEY.



WELL PAD - JODSTER SOUTH 24-25HZ

MULTI-WELL PLAN
JODSTER SOUTH 25-1HZ, JODSTER SOUTH 25-2HZ,
JODSTER SOUTH 25-3HZ, JODSTER SOUTH 25-4HZ, JODSTER SOUTH 25-5HZ,
JODSTER SOUTH 25-6HZ, JODSTER SOUTH 25-7HZ, JODSTER SOUTH 25-8HZ,
JODSTER SOUTH 25-9HZ, JODSTER SOUTH 25-10HZ,
JODSTER SOUTH 25-11HZ & JODSTER SOUTH 25-12HZ
LOCATED IN SECTION 25, T5N, R68W, 6TH P.M.
LARIMER COUNTY, COLORADO &
LOCATED IN SECTIONS 29 & 30, T5N, R67W, 6TH P.M.
WELD COUNTY, COLORADO

**Kerr-McGee Oil &
Gas Onshore L.P.**
1099 18th Street
Denver, Colorado 80202



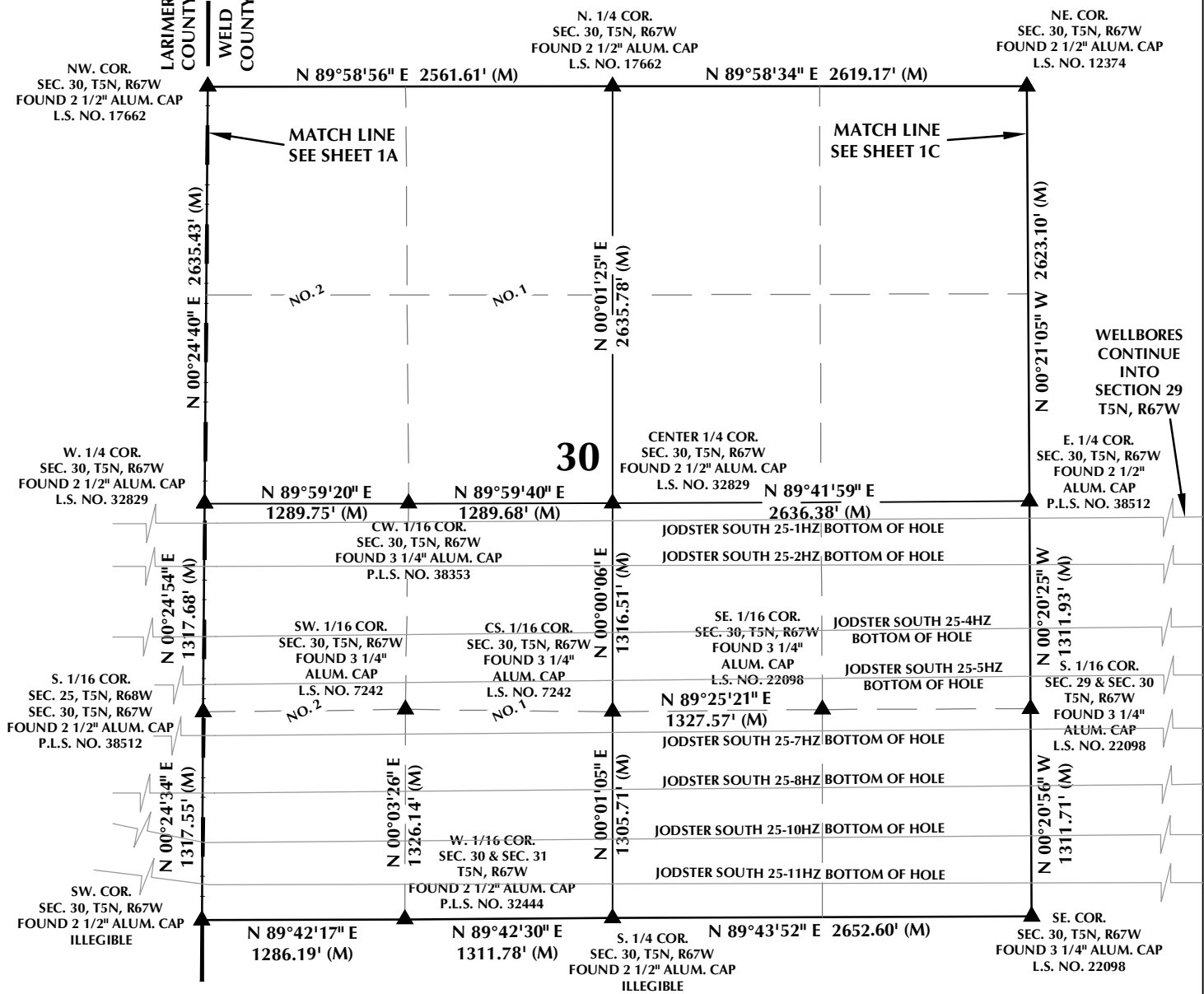
CONSULTING, LLC

SHERIDAN OFFICE
1095 Saberton Avenue
Sheridan, Wyoming 82801
Phone 307-674-0609

LOVELAND OFFICE
6706 North Franklin Avenue
Loveland, Colorado 80538
Phone 970-776-4331

DRAFTED BY:	LMO	CHECKED BY:	RKF	SHEET NO:
DATE DRAFTED:	9/21/18	DATE SURVEYED:	9/3/18	1A
REVISED:	1/9/19	FILE NAME:	16-95	1A OF 1

MULTI-WELL PLAN SECTION 30, T5N, R67W



WELL NOTES:

JODSTER SOUTH 25-1HZ
SURFACE: 2197' FNL, 704' FEL, SEC. 25, T5N, R68W
BOTTOM HOLE: 2548' FSL, 160' FEL, SEC. 29, T5N, R67W

JODSTER SOUTH 25-2HZ
SURFACE: 2212' FNL, 704' FEL, SEC. 25, T5N, R68W
BOTTOM HOLE: 2232' FSL, 160' FEL, SEC. 29, T5N, R67W

JODSTER SOUTH 25-3HZ
SURFACE: 2227' FNL, 704' FEL, SEC. 25, T5N, R68W
BOTTOM HOLE: 2129' FSL, 470' FWL, SEC. 25, T5N, R68W

JODSTER SOUTH 25-4HZ
SURFACE: 2242' FNL, 704' FEL, SEC. 25, T5N, R68W
BOTTOM HOLE: 1870' FSL, 160' FEL, SEC. 29, T5N, R67W

JODSTER SOUTH 25-5HZ
SURFACE: 2257' FNL, 704' FEL, SEC. 25, T5N, R68W
BOTTOM HOLE: 1566' FSL, 160' FEL, SEC. 29, T5N, R67W

JODSTER SOUTH 25-6HZ
SURFACE: 2272' FNL, 704' FEL, SEC. 25, T5N, R68W
BOTTOM HOLE: 1487' FSL, 470' FWL, SEC. 25, T5N, R68W

JODSTER SOUTH 25-7HZ
SURFACE: 2287' FNL, 704' FEL, SEC. 25, T5N, R68W
BOTTOM HOLE: 1220' FSL, 160' FEL, SEC. 29, T5N, R67W

JODSTER SOUTH 25-8HZ
SURFACE: 2302' FNL, 704' FEL, SEC. 25, T5N, R68W
BOTTOM HOLE: 870' FSL, 160' FEL, SEC. 29, T5N, R67W

JODSTER SOUTH 25-9HZ
SURFACE: 2317' FNL, 704' FEL, SEC. 25, T5N, R68W
BOTTOM HOLE: 920' FSL, 470' FWL, SEC. 25, T5N, R68W

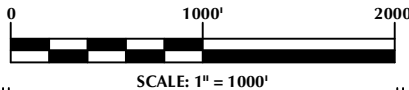
JODSTER SOUTH 25-10HZ
SURFACE: 2332' FNL, 704' FEL, SEC. 25, T5N, R68W
BOTTOM HOLE: 548' FSL, 160' FEL, SEC. 29, T5N, R67W

JODSTER SOUTH 25-11HZ
SURFACE: 2347' FNL, 704' FEL, SEC. 25, T5N, R68W
BOTTOM HOLE: 222' FSL, 161' FEL, SEC. 29, T5N, R67W

JODSTER SOUTH 25-12HZ
SURFACE: 2362' FNL, 704' FEL, SEC. 25, T5N, R68W
BOTTOM HOLE: 470' FSL, 470' FWL, SEC. 25, T5N, R68W

NOTES:

- INDICATES SECTION CORNER.
- INDICATES CALCULATED CORNER.
- BASIS OF BEARING DERIVED FROM COLORADO COORDINATE SYSTEM OF 1983 NORTH ZONE.
- ALL MEASURED DISTANCES ARE GRID.
- COMBINED SCALE FACTOR: .99972964 CALCULATED FROM THE E. 1/4 CORNER OF SECTION 25, T5N, R68W.
- WELL FOOTAGES ARE MEASURED AT RIGHT ANGLES TO THE SECTION LINES.
- NO. 1 & NO. 2 AS SHOWN HEREON ARE GOVERNMENT LOTS 1 & 2 PER THE ORIGINAL GLO SURVEY.



WELL PAD - JODSTER SOUTH 24-25HZ

MULTI-WELL PLAN
JODSTER SOUTH 25-1HZ, JODSTER SOUTH 25-2HZ,
JODSTER SOUTH 25-3HZ, JODSTER SOUTH 25-4HZ, JODSTER SOUTH 25-5HZ,
JODSTER SOUTH 25-6HZ, JODSTER SOUTH 25-7HZ, JODSTER SOUTH 25-8HZ,
JODSTER SOUTH 25-9HZ, JODSTER SOUTH 25-10HZ,
JODSTER SOUTH 25-11HZ & JODSTER SOUTH 25-12HZ
LOCATED IN SECTION 25, T5N, R68W, 6TH P.M.
LARIMER COUNTY, COLORADO &
LOCATED IN SECTIONS 29 & 30, T5N, R67W, 6TH P.M.
WELD COUNTY, COLORADO

**Kerr-McGee Oil &
Gas Onshore L.P.**
1099 18th Street
Denver, Colorado 80202



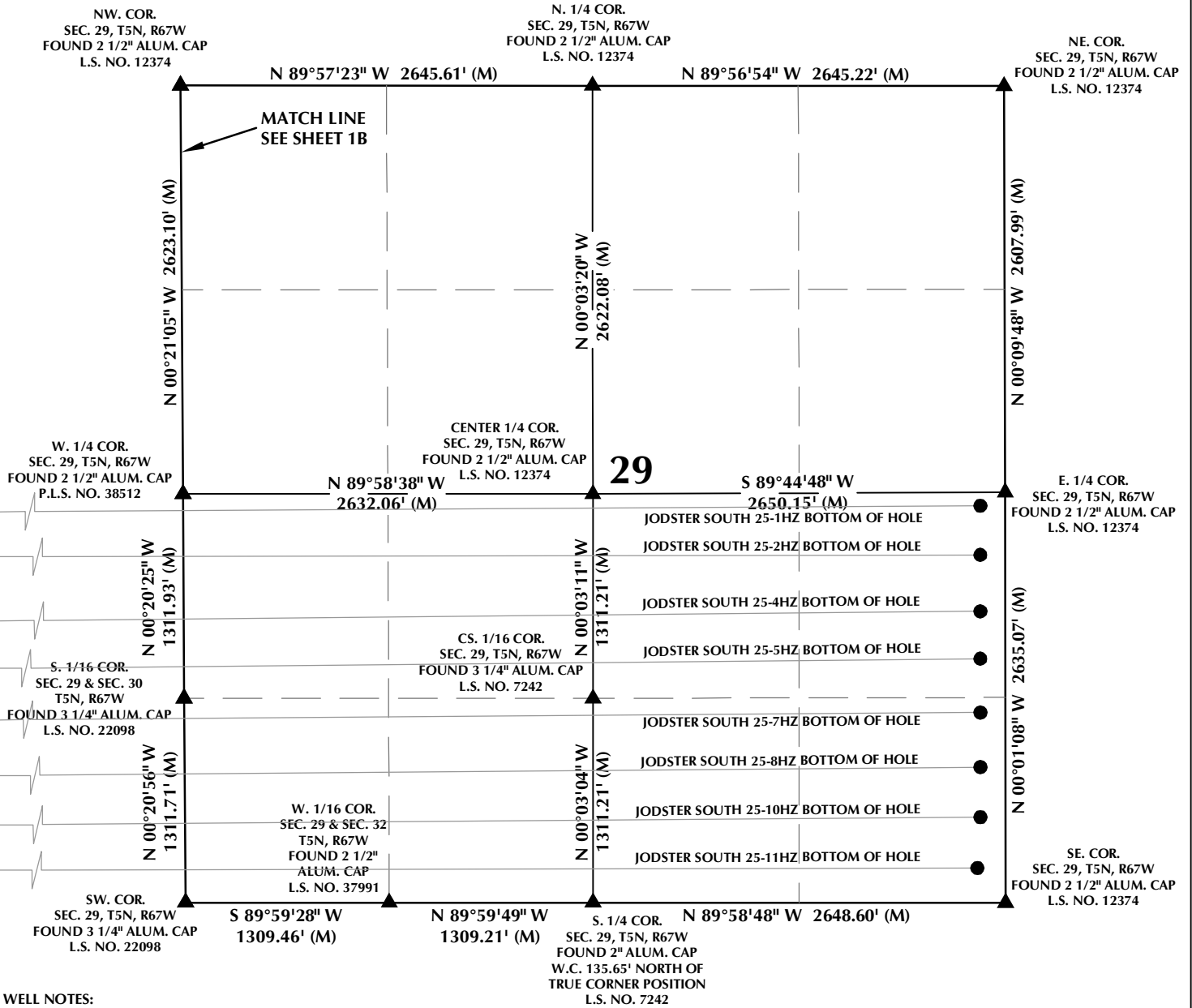
CONSULTING, LLC

SHERIDAN OFFICE
1095 Saberton Avenue
Sheridan, Wyoming 82801
Phone 307-674-0609

LOVELAND OFFICE
6706 North Franklin Avenue
Loveland, Colorado 80538
Phone 970-776-4331

DRAFTED BY:	LMO	CHECKED BY:	RKF	SHEET NO:
DATE DRAFTED:	9/21/18	DATE SURVEYED:	9/3/18	1B
REVISED:	1/9/19	FILE NAME:	16-95	1B OF 1

MULTI-WELL PLAN SECTION 29, T5N, R67W



WELL NOTES:

JODSTER SOUTH 25-1HZ
SURFACE: 2197' FNL, 704' FEL, SEC. 25, T5N, R68W
BOTTOM HOLE: 2548' FSL, 160' FEL, SEC. 29, T5N, R67W

JODSTER SOUTH 25-2HZ
SURFACE: 2212' FNL, 704' FEL, SEC. 25, T5N, R68W
BOTTOM HOLE: 2232' FSL, 160' FEL, SEC. 29, T5N, R67W

JODSTER SOUTH 25-3HZ
SURFACE: 2227' FNL, 704' FEL, SEC. 25, T5N, R68W
BOTTOM HOLE: 2129' FSL, 470' FWL, SEC. 25, T5N, R68W

JODSTER SOUTH 25-4HZ
SURFACE: 2242' FNL, 704' FEL, SEC. 25, T5N, R68W
BOTTOM HOLE: 1870' FSL, 160' FEL, SEC. 29, T5N, R67W

JODSTER SOUTH 25-5HZ
SURFACE: 2257' FNL, 704' FEL, SEC. 25, T5N, R68W
BOTTOM HOLE: 1566' FSL, 160' FEL, SEC. 29, T5N, R67W

JODSTER SOUTH 25-6HZ
SURFACE: 2272' FNL, 704' FEL, SEC. 25, T5N, R68W
BOTTOM HOLE: 1487' FSL, 470' FWL, SEC. 25, T5N, R68W

JODSTER SOUTH 25-7HZ
SURFACE: 2287' FNL, 704' FEL, SEC. 25, T5N, R68W
BOTTOM HOLE: 1220' FSL, 160' FEL, SEC. 29, T5N, R67W

JODSTER SOUTH 25-8HZ
SURFACE: 2302' FNL, 704' FEL, SEC. 25, T5N, R68W
BOTTOM HOLE: 870' FSL, 160' FEL, SEC. 29, T5N, R67W

JODSTER SOUTH 25-9HZ
SURFACE: 2317' FNL, 704' FEL, SEC. 25, T5N, R68W
BOTTOM HOLE: 920' FSL, 470' FWL, SEC. 25, T5N, R68W

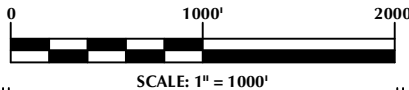
JODSTER SOUTH 25-10HZ
SURFACE: 2332' FNL, 704' FEL, SEC. 25, T5N, R68W
BOTTOM HOLE: 548' FSL, 160' FEL, SEC. 29, T5N, R67W

JODSTER SOUTH 25-11HZ
SURFACE: 2347' FNL, 704' FEL, SEC. 25, T5N, R68W
BOTTOM HOLE: 222' FSL, 161' FEL, SEC. 29, T5N, R67W

JODSTER SOUTH 25-12HZ
SURFACE: 2362' FNL, 704' FEL, SEC. 25, T5N, R68W
BOTTOM HOLE: 470' FSL, 470' FWL, SEC. 25, T5N, R68W

NOTES:

- ▲ INDICATES SECTION CORNER.
- INDICATES CALCULATED CORNER.
- BASIS OF BEARING DERIVED FROM COLORADO COORDINATE SYSTEM OF 1983 NORTH ZONE.
- ALL MEASURED DISTANCES ARE GRID.
- COMBINED SCALE FACTOR: .99972964 CALCULATED FROM THE E. 1/4 CORNER OF SECTION 25, T5N, R68W.
- WELL FOOTAGES ARE MEASURED AT RIGHT ANGLES TO THE SECTION LINES.



WELL PAD - JODSTER SOUTH 24-25HZ

MULTI-WELL PLAN
JODSTER SOUTH 25-1HZ, JODSTER SOUTH 25-2HZ,
JODSTER SOUTH 25-3HZ, JODSTER SOUTH 25-4HZ, JODSTER SOUTH 25-5HZ,
JODSTER SOUTH 25-6HZ, JODSTER SOUTH 25-7HZ, JODSTER SOUTH 25-8HZ,
JODSTER SOUTH 25-9HZ, JODSTER SOUTH 25-10HZ,
JODSTER SOUTH 25-11HZ & JODSTER SOUTH 25-12HZ
LOCATED IN SECTION 25, T5N, R68W, 6TH P.M.
LARIMER COUNTY, COLORADO &
LOCATED IN SECTIONS 29 & 30, T5N, R67W, 6TH P.M.
WELD COUNTY, COLORADO

**Kerr-McGee Oil &
Gas Onshore L.P.**
1099 18th Street
Denver, Colorado 80202



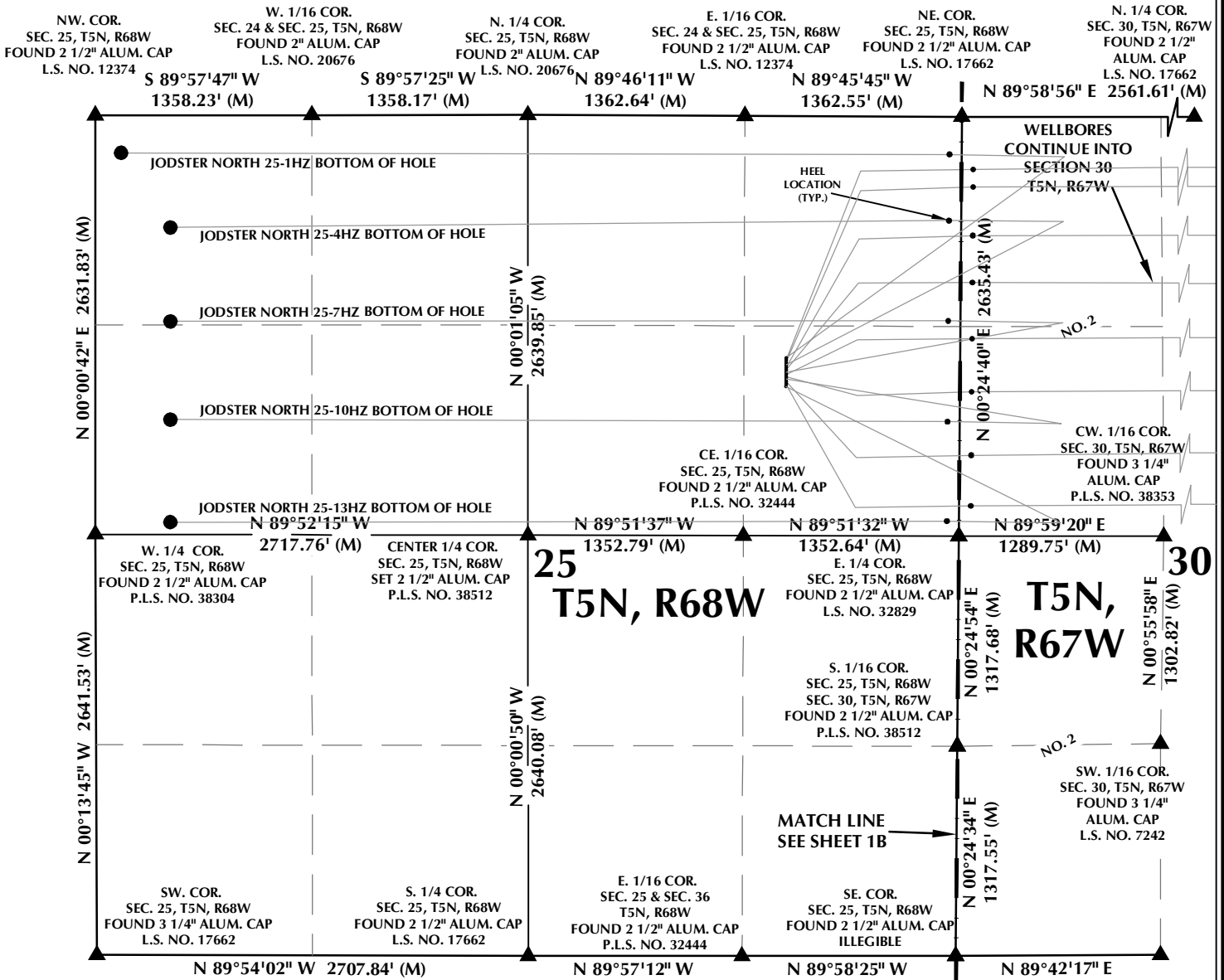
CONSULTING, LLC

SHERIDAN OFFICE
1095 Saberton Avenue
Sheridan, Wyoming 82801
Phone 307-674-0609

LOVELAND OFFICE
6706 North Franklin Avenue
Loveland, Colorado 80538
Phone 970-776-4331

DRAFTED BY:	LMO	CHECKED BY:	RKF	SHEET NO:
DATE DRAFTED:	9/21/18	DATE SURVEYED:	9/3/18	1C
REVISED:	1/9/19	FILE NAME:	16-95	1C OF 1

MULTI-WELL PLAN SECTIONS 25, T5N, R68W & 30, T5N, R67W



WELL NOTES:

JODSTER NORTH 25-1HZ
SURFACE: 1518' FNL, 1092' FEL, SEC. 25, T5N, R68W
BOTTOM HOLE: 235' FNL, 160' FWL, SEC. 25, T5N, R68W

JODSTER NORTH 25-2HZ
SURFACE: 1533' FNL, 1092' FEL, SEC. 25, T5N, R68W
BOTTOM HOLE: 235' FNL, 160' FEL, SEC. 29, T5N, R67W

JODSTER NORTH 25-3HZ
SURFACE: 1548' FNL, 1092' FEL, SEC. 25, T5N, R68W
BOTTOM HOLE: 420' FNL, 160' FEL, SEC. 29, T5N, R67W

JODSTER NORTH 25-4HZ
SURFACE: 1563' FNL, 1092' FEL, SEC. 25, T5N, R68W
BOTTOM HOLE: 704' FNL, 470' FWL, SEC. 25, T5N, R68W

JODSTER NORTH 25-5HZ
SURFACE: 1578' FNL, 1092' FEL, SEC. 25, T5N, R68W
BOTTOM HOLE: 735' FNL, 160' FEL, SEC. 29, T5N, R67W

JODSTER NORTH 25-6HZ
SURFACE: 1593' FNL, 1092' FEL, SEC. 25, T5N, R68W
BOTTOM HOLE: 1074' FNL, 161' FEL, SEC. 29, T5N, R67W

JODSTER NORTH 25-7HZ
SURFACE: 1608' FNL, 1091' FEL, SEC. 25, T5N, R68W
BOTTOM HOLE: 1294' FNL, 471' FWL, SEC. 25, T5N, R68W

JODSTER NORTH 25-8HZ
SURFACE: 1623' FNL, 1091' FEL, SEC. 25, T5N, R68W
BOTTOM HOLE: 1345' FNL, 160' FEL, SEC. 29, T5N, R67W

JODSTER NORTH 25-9HZ
SURFACE: 1638' FNL, 1091' FEL, SEC. 25, T5N, R68W
BOTTOM HOLE: 1678' FNL, 160' FEL, SEC. 29, T5N, R67W

JODSTER NORTH 25-10HZ
SURFACE: 1653' FNL, 1091' FEL, SEC. 25, T5N, R68W
BOTTOM HOLE: 1911' FNL, 470' FWL, SEC. 25, T5N, R68W

JODSTER NORTH 25-11HZ
SURFACE: 1668' FNL, 1091' FEL, SEC. 25, T5N, R68W
BOTTOM HOLE: 2017' FNL, 160' FEL, SEC. 29, T5N, R67W

JODSTER NORTH 25-12HZ
SURFACE: 1683' FNL, 1091' FEL, SEC. 25, T5N, R68W
BOTTOM HOLE: 2378' FNL, 160' FEL, SEC. 29, T5N, R67W

JODSTER NORTH 25-13HZ
SURFACE: 1698' FNL, 1091' FEL, SEC. 25, T5N, R68W
BOTTOM HOLE: 2556' FNL, 470' FWL, SEC. 25, T5N, R68W

NOTES:

- INDICATES SECTION CORNER.
- INDICATES CALCULATED CORNER.
- BASIS OF BEARING DERIVED FROM COLORADO COORDINATE SYSTEM OF 1983 NORTH ZONE.
- ALL MEASURED DISTANCES ARE GRID.
- COMBINED SCALE FACTOR: .99972964 CALCULATED FROM THE E. 1/4 CORNER OF SECTION 25, T5N, R68W.
- WELL FOOTAGES ARE MEASURED AT RIGHT ANGLES TO THE SECTION LINES.
- NO. 2 AS SHOWN HEREON IS GOVERNMENT LOT 2 PER THE ORIGINAL GLO SURVEY.

WELL PAD - JODSTER NORTH 8-25HZ

MULTI-WELL PLAN
JODSTER NORTH 25-1HZ, JODSTER NORTH 25-2HZ, JODSTER NORTH 25-3HZ,
JODSTER NORTH 25-4HZ, JODSTER NORTH 25-5HZ, JODSTER NORTH 25-6HZ,
JODSTER NORTH 25-7HZ, JODSTER NORTH 25-8HZ, JODSTER NORTH 25-9HZ,
JODSTER NORTH 25-10HZ, JODSTER NORTH 25-11HZ,
JODSTER NORTH 25-12HZ & JODSTER NORTH 25-13HZ
LOCATED IN SECTION 25, T5N, R68W, 6TH P.M.
LARIMER COUNTY, COLORADO &
LOCATED IN SECTIONS 29 & 30, T5N, R67W, 6TH P.M.
WELD COUNTY, COLORADO

**Kerr-McGee Oil &
Gas Onshore L.P.**
1099 18th Street
Denver, Colorado 80202



CONSULTING, LLC

SHERIDAN OFFICE
1095 Saberton Avenue
Sheridan, Wyoming 82801
Phone 307-674-0609

LOVELAND OFFICE
6706 North Franklin Avenue
Loveland, Colorado 80538
Phone 970-776-4331

DRAFTED BY:	LMO	CHECKED BY:	RKF	SHEET NO:
DATE DRAFTED:	9/20/18	DATE SURVEYED:	9/3/18	1A
REVISED:	1/10/19	FILE NAME:	16-95	1A OF 1

LARIMER
COUNTY
WELD
COUNTY



JODSTER NORTH 25-8HZ
SURFACE: 1623' FNL, 1091' FEL, SEC. 25, T5N, R68W
BOTTOM HOLE: 1345' FNL, 160' FEL, SEC. 29, T5N, R67W
JODSTER NORTH 25-9HZ
SURFACE: 1638' FNL, 1091' FEL, SEC. 25, T5N, R68W
BOTTOM HOLE: 1678' FNL, 160' FEL, SEC. 29, T5N, R67W
JODSTER NORTH 25-10HZ
SURFACE: 1653' FNL, 1091' FEL, SEC. 25, T5N, R68W
BOTTOM HOLE: 1911' FNL, 470' FWL, SEC. 25, T5N, R68W
JODSTER NORTH 25-11HZ
SURFACE: 1668' FNL, 1091' FEL, SEC. 25, T5N, R68W
BOTTOM HOLE: 2017' FNL, 160' FEL, SEC. 29, T5N, R67W
JODSTER NORTH 25-12HZ
SURFACE: 1683' FNL, 1091' FEL, SEC. 25, T5N, R68W
BOTTOM HOLE: 2378' FNL, 160' FEL, SEC. 29, T5N, R67W
JODSTER NORTH 25-13HZ
SURFACE: 1698' FNL, 1091' FEL, SEC. 25, T5N, R68W
BOTTOM HOLE: 2556' FNL, 470' FWL, SEC. 25, T5N, R68W

NOTES:

- SCALE: 1" = 1000'

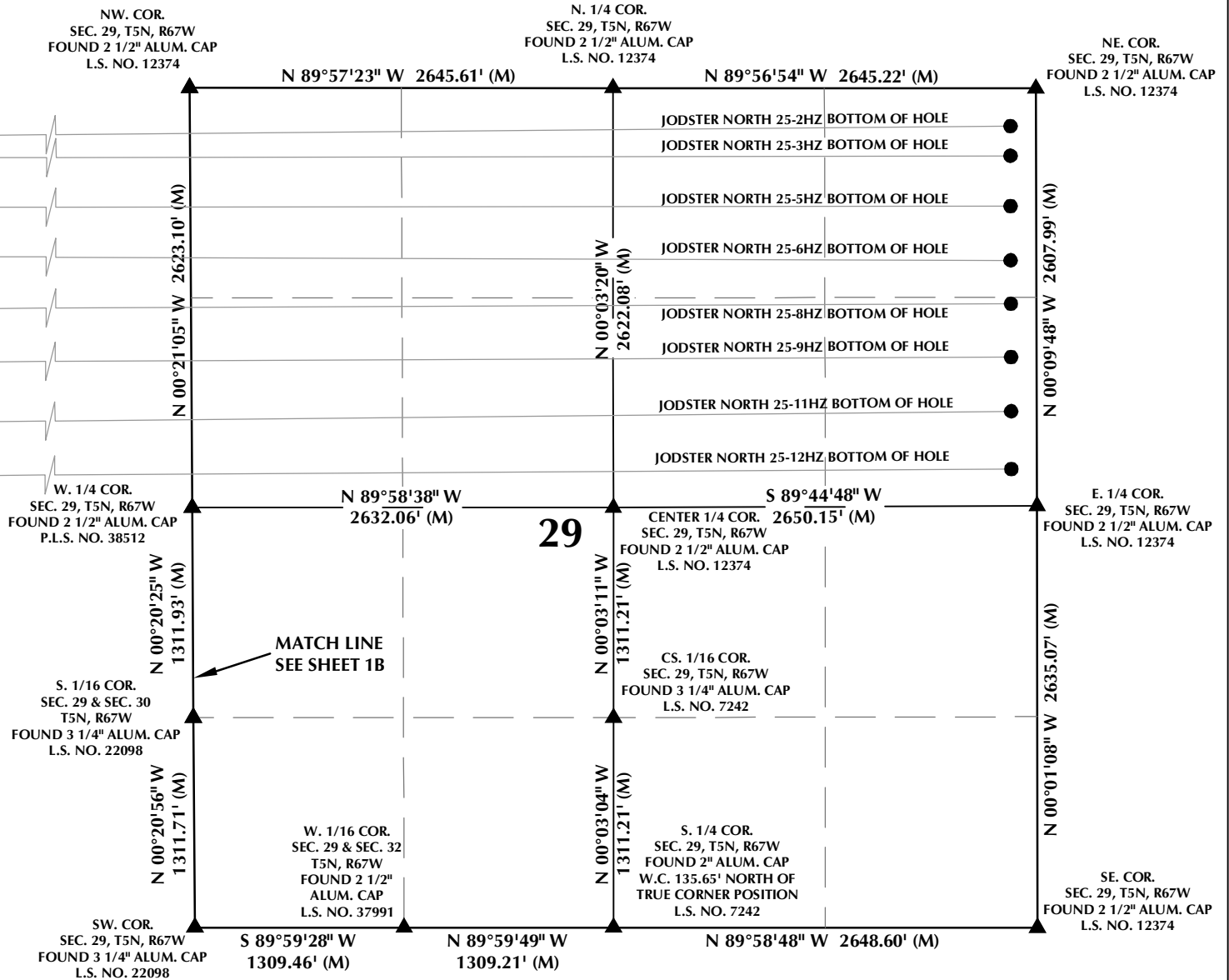
MULTI-WELL PLAN
 JODSTER NORTH 25-1HZ, JODSTER NORTH 25-2HZ, JODSTER NORTH 25-3HZ,
 JODSTER NORTH 25-4HZ, JODSTER NORTH 25-5HZ, JODSTER NORTH 25-6HZ,
 JODSTER NORTH 25-7HZ, JODSTER NORTH 25-8HZ, JODSTER NORTH 25-9HZ,
 JODSTER NORTH 25-10HZ, JODSTER NORTH 25-11HZ,
 JODSTER NORTH 25-12HZ & JODSTER NORTH 25-13HZ
 LOCATED IN SECTION 25, T5N, R68W, 6TH P.M.
 LARIMER COUNTY, COLORADO &
 LOCATED IN SECTIONS 29 & 30, T5N, R67W, 6TH P.M.
 WELD COUNTY, COLORADO

SHERIDAN OFFICE
1095 Saberton Avenue
Sheridan, Wyoming 82801
Phone 307-674-0609

LOVELAND OFFICE
6706 North Franklin Avenue
Loveland, Colorado 80538
Phone 970-776-4331

DRAFTED BY: LMO	CHECKED BY: RKF	SHEET NO: 1B 1B OF 1
DATE DRAFTED: 9/20/18	DATE SURVEYED: 9/3/18	
REVISED: 1/10/19	FILE NAME: 16-95	

MULTI-WELL PLAN SECTION 29, T5N, R67W



WELL NOTES:

JODSTER NORTH 25-1HZ
SURFACE: 1518' FNL, 1092' FEL, SEC. 25, T5N, R68W
BOTTOM HOLE: 235' FNL, 160' FWL, SEC. 25, T5N, R68W

JODSTER NORTH 25-2HZ
SURFACE: 1533' FNL, 1092' FEL, SEC. 25, T5N, R68W
BOTTOM HOLE: 235' FNL, 160' FWL, SEC. 29, T5N, R67W

JODSTER NORTH 25-3HZ
SURFACE: 1548' FNL, 1092' FEL, SEC. 25, T5N, R68W
BOTTOM HOLE: 420' FNL, 160' FWL, SEC. 29, T5N, R67W

JODSTER NORTH 25-4HZ
SURFACE: 1563' FNL, 1092' FEL, SEC. 25, T5N, R68W
BOTTOM HOLE: 704' FNL, 470' FWL, SEC. 25, T5N, R68W

JODSTER NORTH 25-5HZ
SURFACE: 1578' FNL, 1092' FEL, SEC. 25, T5N, R68W
BOTTOM HOLE: 735' FNL, 160' FWL, SEC. 29, T5N, R67W

JODSTER NORTH 25-6HZ
SURFACE: 1593' FNL, 1092' FEL, SEC. 25, T5N, R68W
BOTTOM HOLE: 1074' FNL, 161' FWL, SEC. 29, T5N, R67W

JODSTER NORTH 25-7HZ
SURFACE: 1608' FNL, 1091' FEL, SEC. 25, T5N, R68W
BOTTOM HOLE: 1294' FNL, 471' FWL, SEC. 25, T5N, R68W

JODSTER NORTH 25-8HZ
SURFACE: 1623' FNL, 1091' FEL, SEC. 25, T5N, R68W
BOTTOM HOLE: 1345' FNL, 160' FWL, SEC. 29, T5N, R67W

JODSTER NORTH 25-9HZ
SURFACE: 1638' FNL, 1091' FEL, SEC. 25, T5N, R68W
BOTTOM HOLE: 1678' FNL, 160' FWL, SEC. 29, T5N, R67W

JODSTER NORTH 25-10HZ
SURFACE: 1653' FNL, 1091' FEL, SEC. 25, T5N, R68W
BOTTOM HOLE: 1911' FNL, 470' FWL, SEC. 25, T5N, R68W

JODSTER NORTH 25-11HZ
SURFACE: 1668' FNL, 1091' FEL, SEC. 25, T5N, R68W
BOTTOM HOLE: 2017' FNL, 160' FWL, SEC. 29, T5N, R67W

JODSTER NORTH 25-12HZ
SURFACE: 1683' FNL, 1091' FEL, SEC. 25, T5N, R68W
BOTTOM HOLE: 2378' FNL, 160' FWL, SEC. 29, T5N, R67W

JODSTER NORTH 25-13HZ
SURFACE: 1698' FNL, 1091' FEL, SEC. 25, T5N, R68W
BOTTOM HOLE: 2556' FNL, 470' FWL, SEC. 25, T5N, R68W

NOTES:

- ▲ INDICATES SECTION CORNER.
- INDICATES CALCULATED CORNER.
- BASIS OF BEARING DERIVED FROM COLORADO COORDINATE SYSTEM OF 1983 NORTH ZONE.
- ALL MEASURED DISTANCES ARE GRID.
- COMBINED SCALE FACTOR: .99972964 CALCULATED FROM THE E. 1/4 CORNER OF SECTION 25, T5N, R68W.
- WELL FOOTAGES ARE MEASURED AT RIGHT ANGLES TO THE SECTION LINES.

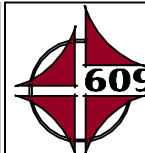


SCALE: 1" = 1000'

WELL PAD - JODSTER NORTH 8-25HZ

MULTI-WELL PLAN
JODSTER NORTH 25-1HZ, JODSTER NORTH 25-2HZ, JODSTER NORTH 25-3HZ,
JODSTER NORTH 25-4HZ, JODSTER NORTH 25-5HZ, JODSTER NORTH 25-6HZ,
JODSTER NORTH 25-7HZ, JODSTER NORTH 25-8HZ, JODSTER NORTH 25-9HZ,
JODSTER NORTH 25-10HZ, JODSTER NORTH 25-11HZ,
JODSTER NORTH 25-12HZ & JODSTER NORTH 25-13HZ
LOCATED IN SECTION 25, T5N, R68W, 6TH P.M.
LARIMER COUNTY, COLORADO &
LOCATED IN SECTIONS 29 & 30, T5N, R67W, 6TH P.M.
WELD COUNTY, COLORADO

**Kerr-McGee Oil &
Gas Onshore L.P.**
1099 18th Street
Denver, Colorado 80202



CONSULTING, LLC

SHERIDAN OFFICE
1095 Saberton Avenue
Sheridan, Wyoming 82801
Phone 307-674-0609

LOVELAND OFFICE
6706 North Franklin Avenue
Loveland, Colorado 80538
Phone 970-776-4331

DRAFTED BY:	LMO	CHECKED BY:	RKF	SHEET NO:
DATE DRAFTED:	9/20/18	DATE SURVEYED:	9/3/18	1C
REVISED:	1/10/19	FILE NAME:	16-95	1C OF 1