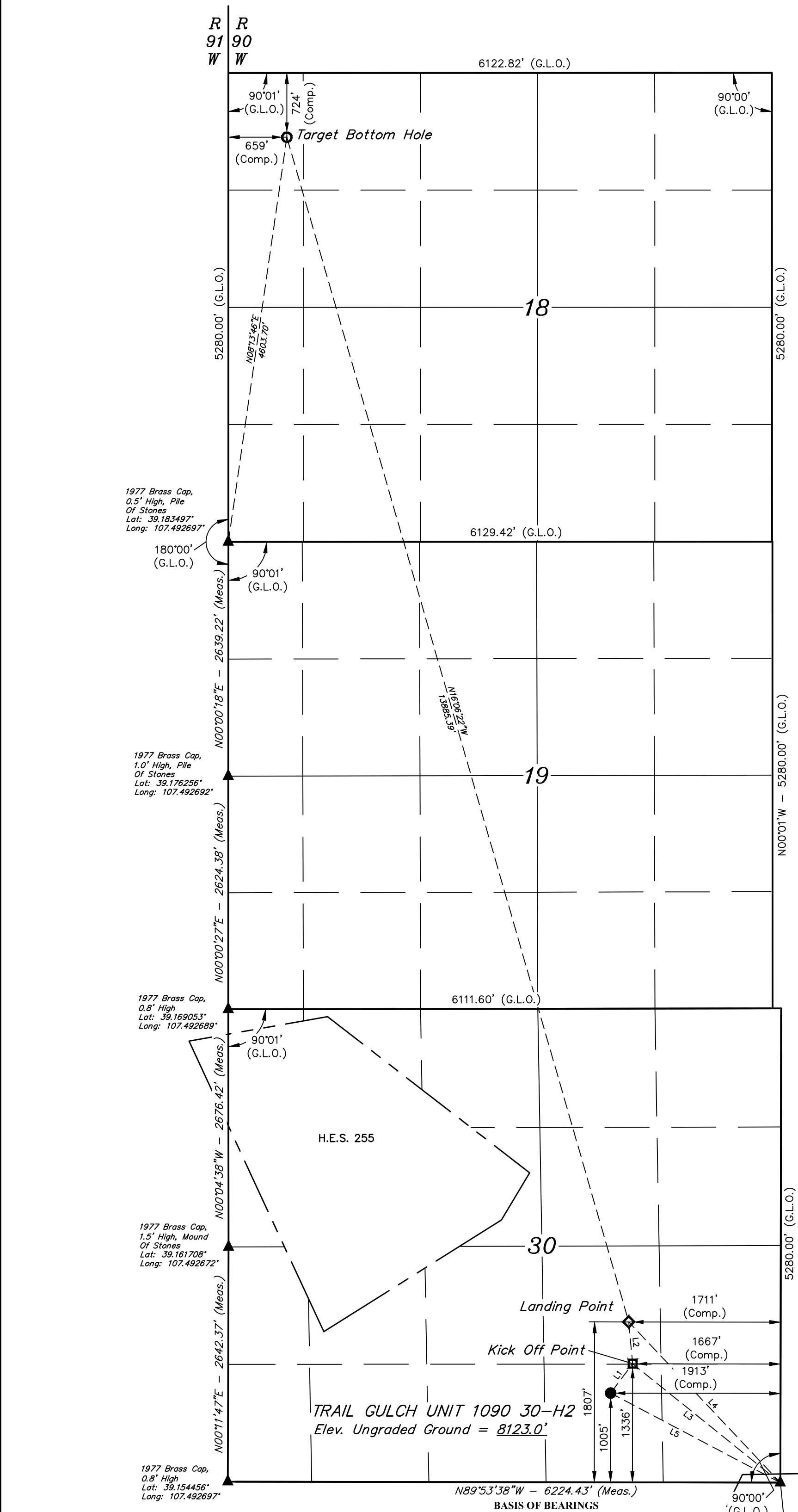


LEGEND:

- = PROPOSED WELLHEAD.
□ = KICK OFF POINT
◇ = LANDING POINT
○ = TARGET BOTTOM HOLE.
▲ = SECTION CORNERS LOCATED. (NAD 83)

T10S, R90W, 6th P.M.



LINE TABLE		
LINE	DIRECTION	LENGTH
L1	N36°44'29"E	413.10'
L2	N05°15'03"W	472.52'
L3	N51°10'25"W	2136.11'
L4	N43°19'55"W	2488.08'
L5	N62°11'15"W	2160.89'

NOTE:
THE PROPOSED TARGET BOTTOM HOLE FOR
THIS WELL IS LOCATED IN THE NW 1/4 NW
1/4 OF SECTION 18, T10S, R90W, 6TH P.M.
AT 724' FNL 659' FWL IT BEARS N14°27'54"W
14604.93' FROM THE PROPOSED WELLHEAD.

NOTE:
Distances referenced on plat to
section lines are perpendicular.

BASIS OF BEARINGS
BEARINGS ARE A BASED ASSUMPTION THAT THE SOUTH LINE OF THE SOUTH 1/2
OF SECTION 30 BEARS N89°53'38"W. MONUMENTS DESCRIBED HEREON.

BASIS OF ELEVATION
SPOT ELEVATION LOCATED IN THE NE 1/4 OF SECTION 9, T11S, R90W, 6th P.M. TAKEN
FROM THE BULL MOUNTAIN, QUADRANGLE, COLORADO, GUNNISON COUNTY, 7.5
MINUTE QUAD (TOPOGRAPHIC MAP) PUBLISHED BY THE UNITED STATES DEPARTMENT
OF THE INTERIOR, GEOLOGICAL SURVEY. SAID ELEVATION IS MARKED AS BEING 7487
FEET.

CERTIFICATE
THIS IS TO CERTIFY THAT THE ABOVE PLAT WAS PREPARED BY ME IN ACCORDANCE WITH THE
NOTES OF ACTUAL SURVEYS MADE BY ME OR UNDER MY SUPERVISION
AND THAT THE LOCATION HAS BEEN STATIONED IN THE GROUND AS SHOWN
ON THE PLAT AND THAT THE SAME ARE TRUE AND CORRECT TO THE BEST
OF MY KNOWLEDGE AND BELIEF.
REGISTERED LAND SURVEYOR
REGISTRATION NO. 19980
STATE OF COLORADO
HAROLD MARSHALL

REV: 3 02-06-19 M.D. (ADD KOP & SHL, LP & BHL MOVES)

Gunnison Energy LLC

TRAIL GULCH UNIT 1090 30-H2
SW 1/4 SE 1/4, SECTION 30, T10S, R90W, 6th P.M.
GUNNISON COUNTY, COLORADO

SURVEYED BY	BART HUNTING, F.R.	10-16-17	SCALE
DRAWN BY	M.D.	10-19-17	1" = 1000'

WELL LOCATION PLAT



UELS, LLC
Corporate Office * 85 South 200 East
Vernal, UT 84078 * (435) 789-1017