



Kerr-McGee Oil & Gas Onshore LP

A subsidiary of Anadarko Petroleum Corporation

1099 18th Street
Denver, CO 80202
720-929-6000

March 27, 2019

Jeff Robbins
Director, Colorado Oil and Gas Conservation Commission
Department of Natural Resources
The Chancery Building
1120 Lincoln Street, Suite 801
Denver, CO 80203

Re: **30 Day Certification Letter - 318A.e**
BAJA BERG 35-7HZ (Doc No.401986241)
Township 2 North, Range 67 West
Section 35: SESW
Unit Acreage: 280 Acres
Proposed Spacing Unit:
02N67W SEC 35: SESW, S2SE;
02N67W SEC 36: S2S2;
Weld County, Colorado

Dear Director Robbins:

Kerr McGee Oil and Gas Onshore LP ("KMG") hereby certifies that KMG owns one hundred percent (100%) of the leasehold interest in the mineral rights in the proposed spacing unit. KMG hereby respectfully requests approval of this boundary well.

If you have any questions or issues regarding this permit, please contact our office.

Sincerely,

KERR-McGEE OIL AND GAS ONSHORE LP

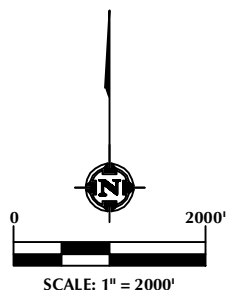
A handwritten signature in blue ink that reads 'Cheryl Light'.

Cheryl Light
Staff Regulatory Analyst

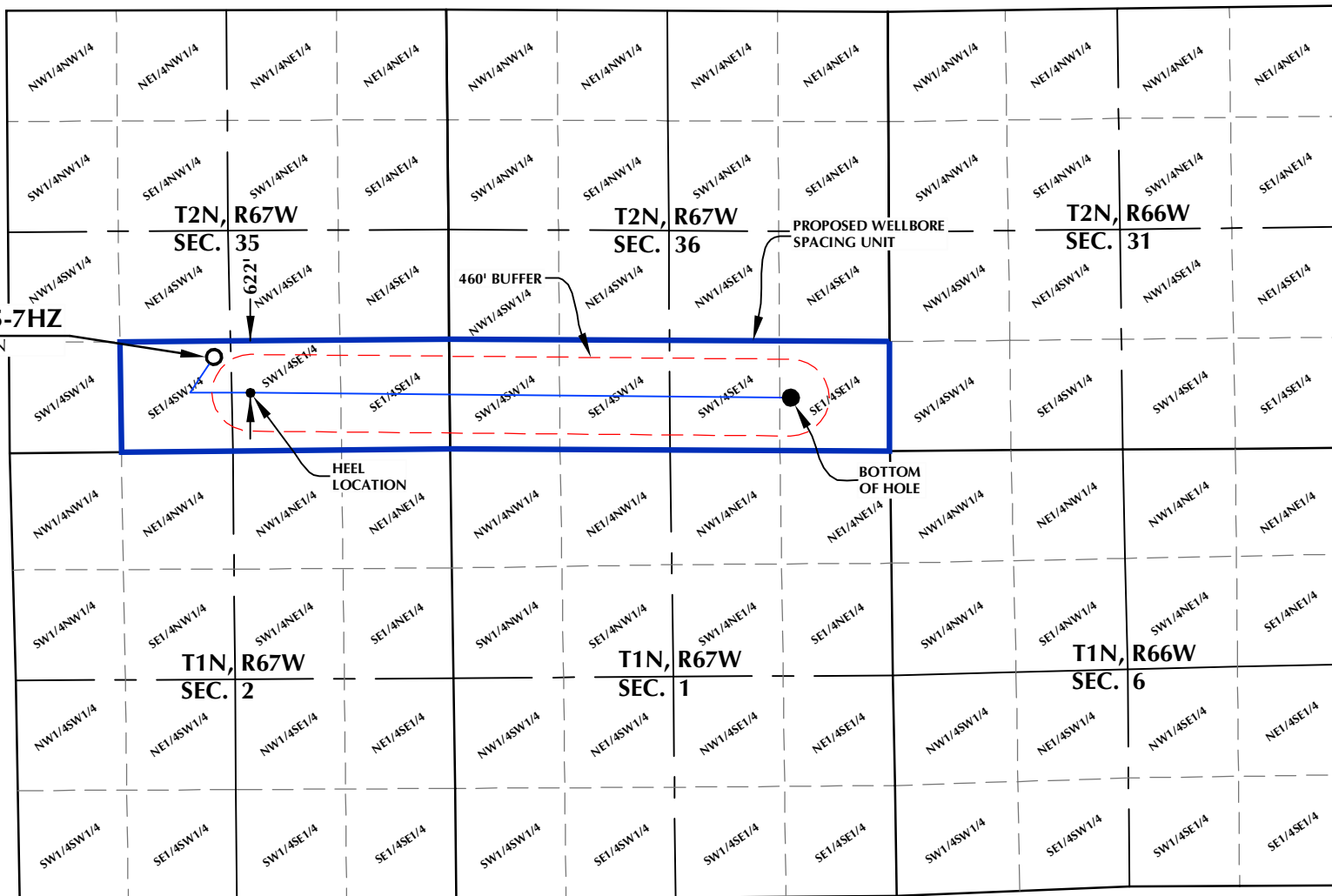
Enclosure

DISTANCE FROM COMPLETED
PORTION OF WELLBORE TO
NEAREST UNIT BOUNDARY= 622'

BAJA BERG 35-7HZ WELLBORE SPACING UNIT



BAJA BERG 35-7HZ
SURFACE LOCATION



SURFACE LOCATION: NAD 83
GROUND ELEVATION= 4932.5'
LATITUDE= 40.090618°
LONGITUDE= -104.858919°
LATITUDE= 40°05'26.224"
LONGITUDE= -104°51'32.108"
HEEL LOCATION: NAD 83
LATITUDE= 40.089433°
LONGITUDE= -104.857364°
LATITUDE= 40°05'21.959"
LONGITUDE= -104°51'26.512"
BOTTOM HOLE LOCATION: NAD 83
LATITUDE= 40.089145°
LONGITUDE= -104.834247°
LATITUDE= 40°05'20.922"
LONGITUDE= -104°50'03.289"

WELL PAD - BAJA BERG 14-35HZ

BAJA BERG 35-7HZ
WELLBORE SPACING UNIT
1132' FSL & 2450' FWL SESEW (SURFACE)
699' FSL & 2385' FEL SWSE (HEEL)
LOCATED IN SECTION 35
635' FSL & 1182' FEL SESE (BOTTOM)
LOCATED IN SECTION 36
T2N, R67W, 6TH P.M.
WELD COUNTY, COLORADO

**Kerr-McGee Oil &
Gas Onshore L.P.**
**1099 18th Street
Denver, Colorado 80202**



CONSULTING, LLC

SHERIDAN OFFICE
1095 Saberton Avenue
Sheridan, Wyoming 82801
Phone 307-674-0609

LOVELAND OFFICE
6706 North Franklin Avenue
Loveland, Colorado 80538
Phone 970-776-4331

DRAFTED BY:	LMO	CHECKED BY:	RKF
DATE DRAFTED:	2/26/18	DATE SURVEYED:	2/12/18
REVISED:	3/14/19	FILE NAME:	16-136

NOTES:

1. DRAWING LATITUDE AND LONGITUDE COORDINATES ARE NAD 83 (2011)(EPOCH:2010).
2. ELEVATION BASED ON NAVD88 (GEOID12B).
3. BASIS OF BEARING DERIVED FROM COLORADO COORDINATE SYSTEM OF 1983 NORTH ZONE.
4. ALL MEASURED DISTANCES ARE GRID. COMBINED SCALE FACTOR: .99972874 CALCULATED FROM THE E. 1/4 CORNER OF SECTION 35, T2N, R67W.