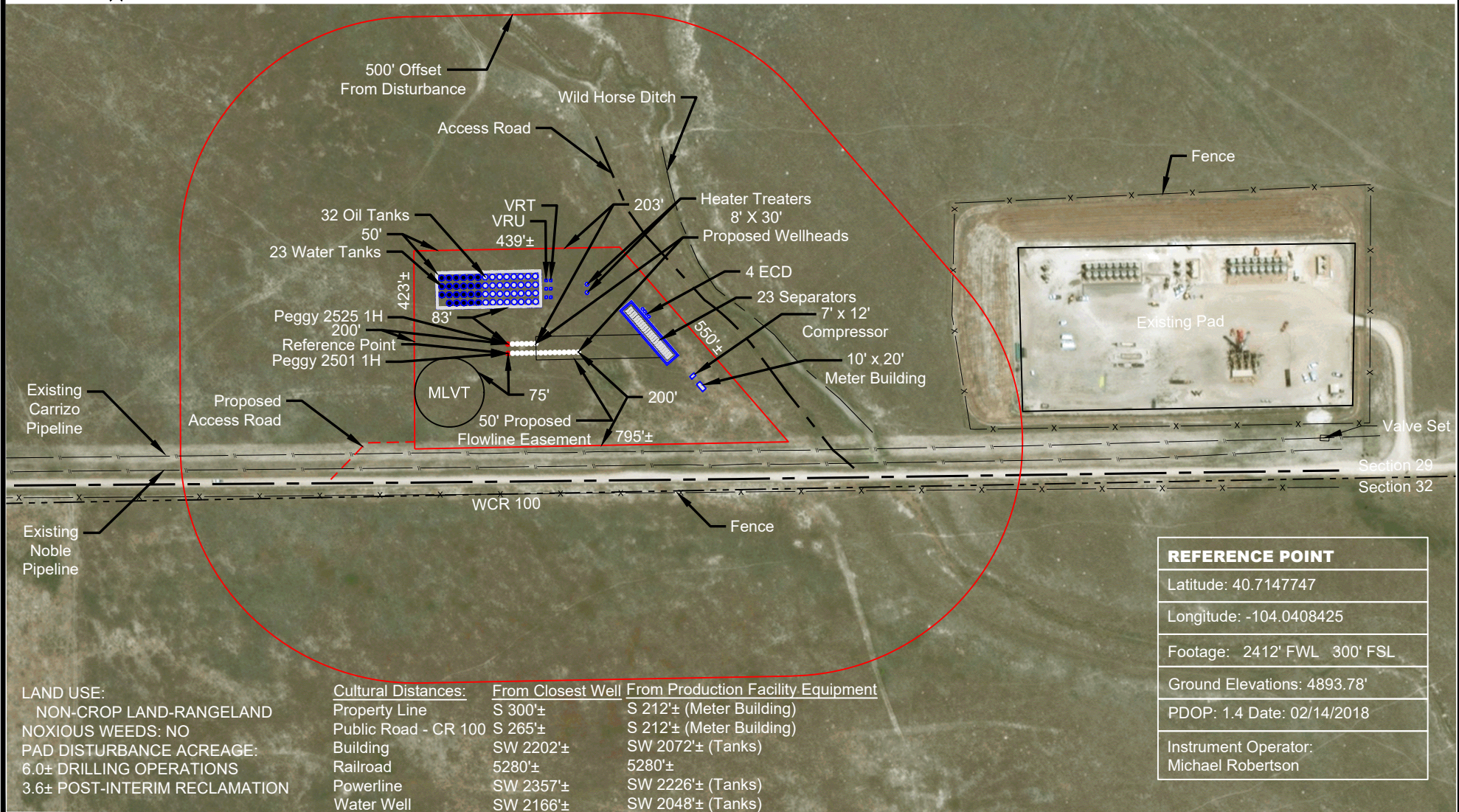


SCALE: 1" = 300'  
0' 150' 300'

**LOCATION DRAWING**  
SE 1/4 SW 1/4 SECTION 25  
T9N R60W 6TH PM  
WELD COUNTY, COLORADO



REFERENCE POINT
Latitude: 40.7147747
Longitude: -104.0408425
Footage: 2412' FWL 300' FSL
Ground Elevations: 4893.78'
PDOP: 1.4 Date: 02/14/2018
Instrument Operator: Michael Robertson

LAND USE:  
NON-CROP LAND-RANGELAND  
NOXIOUS WEEDS: NO  
PAD DISTURBANCE ACREAGE:  
6.0± DRILLING OPERATIONS  
3.6± POST-INTERIM RECLAMATION

Cultural Distances:	From Closest Well	From Production Facility Equipment
Property Line	S 300'±	S 212'± (Meter Building)
Public Road - CR 100	S 265'±	S 212'± (Meter Building)
Building	SW 2202'±	SW 2072'± (Tanks)
Railroad	5280'±	5280'±
Powerline	SW 2357'±	SW 2226'± (Tanks)
Water Well	SW 2166'±	SW 2048'± (Tanks)

VERDAD RESOURCES  
**PEGGY 2501**  
**PEGGY 2525**  
JOB NO. 115263 & 115953

February 13, 2019

REVISION:

1 OF 1

INT

DATE

F2A\_PEGGY\_2501\_LOC\_DRAWING\_R1

NOTE:

ALL PRODUCTION FACILITIES WILL BE ON PAD

