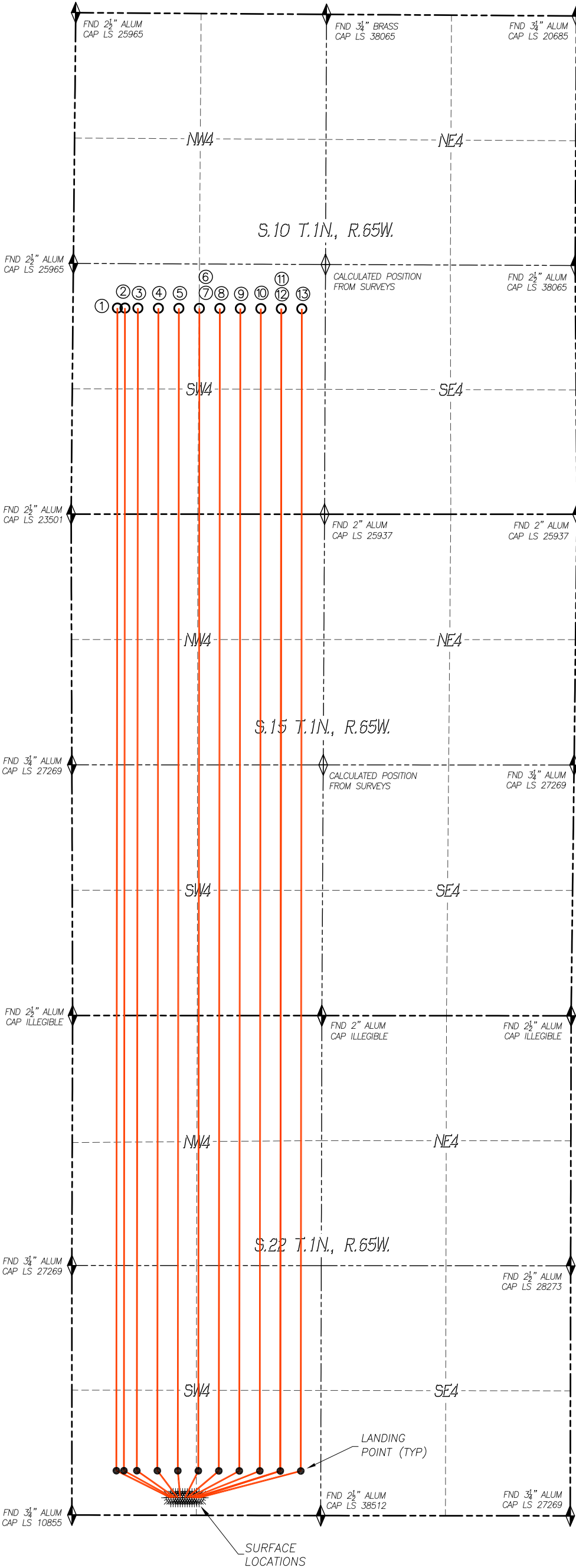


MULTI WELL PLAN
WILLOW 22 WEST WELL PAD

SECTION 22, TOWNSHIP 1 NORTH, RANGE 65 WEST
OF THE 6TH P.M., WELD COUNTY



Bottom Hole Location						
No	Well Name	Latitude	Longitude	Footage		BH Location STR
1	Willow 22-21-3L	N40.06473°	W104.65786°	2181' FSL	470' FWL	10-1N-65W
2	Willow 22-6-4L	N40.06473°	W104.65757°	2181' FSL	550' FWL	10-1N-65W
3	Willow 22-20-2L	N40.06472°	W104.65709°	2180' FSL	687' FWL	10-1N-65W
4	Willow 22-19-1L	N40.06472°	W104.65631°	2180' FSL	904' FWL	10-1N-65W
5	Willow 22-18-3L	N40.06472°	W104.65554°	2179' FSL	1121' FWL	10-1N-65W
6	Willow 22-5-4L	N40.06472°	W104.65476°	2178' FSL	1338' FWL	10-1N-65W
7	Willow 22-17-2L	N40.06472°	W104.65476°	2178' FSL	1338' FWL	10-1N-65W
8	Willow 22-16-1L	N40.06471°	W104.65399°	2177' FSL	1555' FWL	10-1N-65W
9	Willow 22-15-3L	N40.06471°	W104.65321°	2176' FSL	1772' FWL	10-1N-65W
10	Willow 22-14-2L	N40.06471°	W104.65243°	2175' FSL	1989' FWL	10-1N-65W
11	Willow 22-4-4L	N40.06470°	W104.65166°	2174' FSL	2206' FWL	10-1N-65W
12	Willow 22-13-1L	N40.06470°	W104.65166°	2174' FSL	2206' FWL	10-1N-65W
13	Willow 22-12-3L	N40.06470°	W104.65088°	2174' FSL	2423' FWL	10-1N-65W