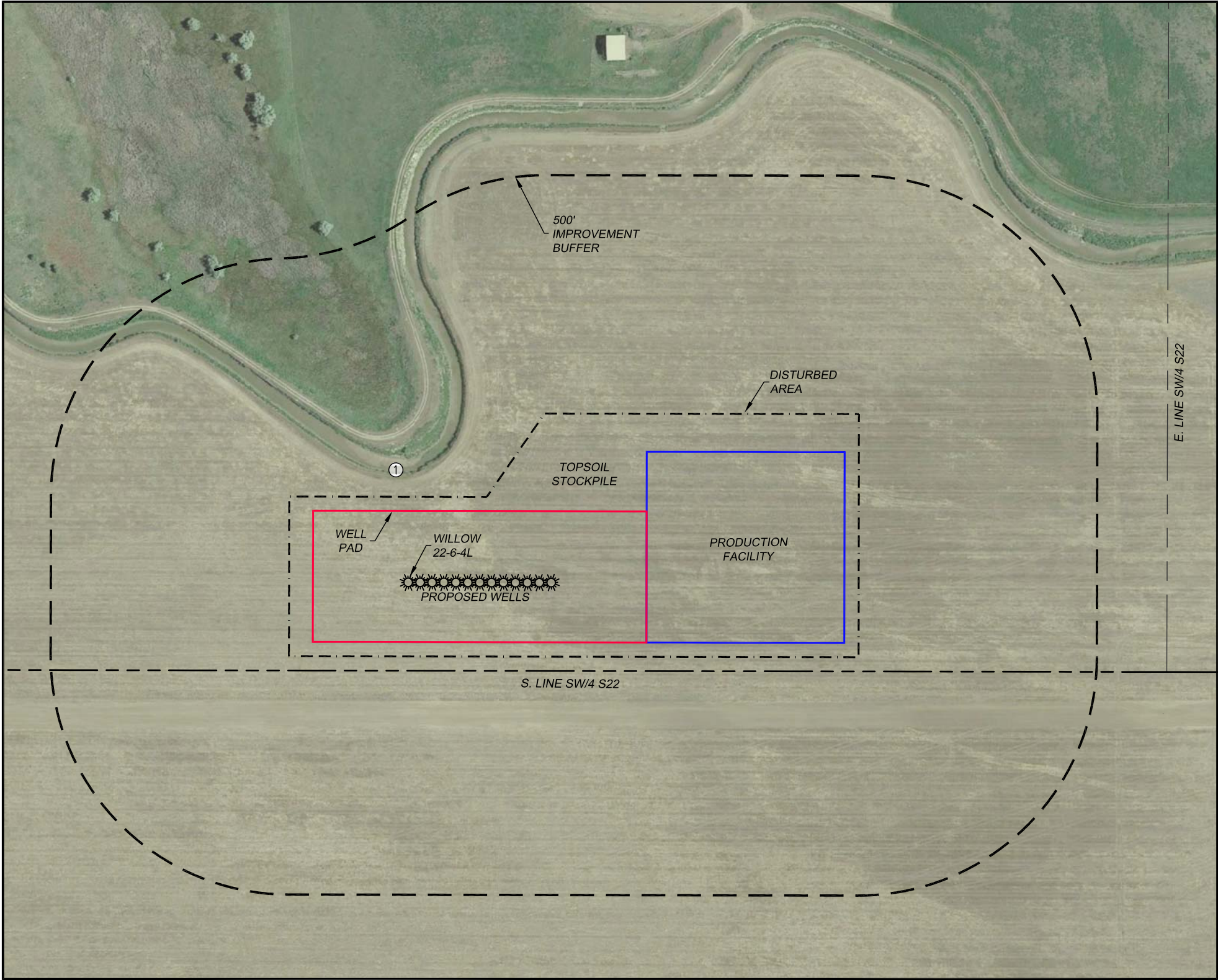


LOCATION DRAWING
WILLOW 22 WEST WELL AND PRODUCTION PAD
SECTION 22, TOWNSHIP 1 NORTH, RANGE 65 WEST OF THE 6TH P.M., WELD COUNTY



CULTURAL ITEMS:	
MEASURED FROM THE NEAREST PROPOSED WELLHEAD	
BUILDING:	1094'± N
BUILDING UNIT:	1288'± SW
HIGH OCC. BLD. UNIT:	5280'+
DES. OUTSIDE ACTIVITY AREA:	5280'+
PUBLIC ROAD:	1483'± SW
ABOVE GROUND UTILITY:	1444'± SW
RAILROAD:	5280'+
PROPERTY LINE:	185'± S
SCHOOL FACILITY:	5280'+
SCHOOL PROPERTY LINE:	5280'+
CHILD CARE CENTER:	5280'+

CULTURAL ITEMS:	
MEASURED FROM THE NEAREST PROPOSED EQUIPMENT	
BUILDING:	819'± N
BUILDING UNIT:	1747'± SW
HIGH OCC. BLD. UNIT:	5280'+
DES. OUTSIDE ACTIVITY AREA:	5280'+
PUBLIC ROAD:	1981'± W
ABOVE GROUND UTILITY:	1941'± W
RAILROAD:	5280'+
PROPERTY LINE:	90'± S
SCHOOL FACILITY:	5280'+
SCHOOL PROPERTY LINE:	5280'+
CHILD CARE CENTER:	5280'+

IMPROVEMENTS	
(MEASURED FROM PROPOSED WILLOW 22-6-4L WELL LOCATION)	
1. CANAL:	230'± N

