

# CONFLUENCE RESOURCES

Location: COLORADO Slot: SLOT#01 WILLOW 22-6-4L (185'FSL & 1046'FWL,SEC.22)  
Field: WELD COUNTY (NAD83, TRUE NORTH) Well: WILLOW 22-6-4L  
Facility: SEC.22-T01N-R65W Wellbore: WILLOW 22-6-4L PWB

Plot reference wellpath is WILLOW 22-6-4L PWP (REV-B.0)	Grid System: NAD83 / Lambert Colorado SP, Northern Zone (501), US feet
True vertical depths are referenced to RIG (17) (RKB)	* = Wellpath was transformed from a different geodetic datum
Measured depths are referenced to RIG (17) (RKB)	North Reference: True north
RIG (17) (RKB) to Mean Sea Level: 5108 feet	Scale: True distance
Mean Sea Level to Mud line (At Slot: SLOT#01 WILLOW 22-6-4L (185'FSL & 1046'FWL,SEC.22)): 0 feet	Depths are in feet
Coordinates are in feet referenced to Slot	Created by: adamkat on 2019-03-15
	Database: Denver

## Location Information

Facility Name				Grid East (US ft)	Grid North (US ft)	Latitude	Longitude
SEC.22-T01N-R65W				3236383.461	1254962.137	40°01'48.612"N	104°39'21.060"W
Slot	Local N (ft)	Local E (ft)	Grid East (US ft)		Grid North (US ft)	Latitude	Longitude
SLOT#01 WILLOW 22-6-4L (185'FSL & 1046'FWL,SEC.22)	0.00	0.00	3236383.461		1254962.137	40°01'48.612"N	104°39'21.060"W
RIG (17) (RKB) to Mud line (At Slot: SLOT#01 WILLOW 22-6-4L (185'FSL & 1046'FWL,SEC.22))				5108ft			
Mean Sea Level to Mud line (At Slot: SLOT#01 WILLOW 22-6-4L (185'FSL & 1046'FWL,SEC.22))				0ft			
RIG (17) (RKB) to Mean Sea Level				5108ft			

## Targets

Name	MD (ft)	TVD (ft)	Local N (ft)	Local E (ft)	Grid East (US ft)	Grid North (US ft)	Latitude	Longitude
HARDLINES SEC.10,15,22-T01N-R65W 460'N&S&E/W		0.00	0.00	0.00	3236383.46	1254962.14	40°01'48.612"N	104°39'21.060"W
SEC.10-T01N-R65W		0.00	0.00	0.00	3236383.46	1254962.14	40°01'48.612"N	104°39'21.060"W
SEC.15-T01N-R65W		0.00	0.00	0.00	3236383.46	1254962.14	40°01'48.612"N	104°39'21.060"W
SEC.22-T01N-R65W		0.00	0.00	0.00	3236383.46	1254962.14	40°01'48.612"N	104°39'21.060"W
WILLOW 22-6-4L BHL ON PLAT (2181'FSL & 470'FWL,SEC.10)		7472.00	12588.33	-562.75	3235700.93	1267544.07	40°03'53.013"N	104°39'28.298"W
WILLOW 22-6-4L BHL REV-2 (2181'FSL & 550'FWL,SEC.10)	20165.04	7472.00	12589.85	-481.42	3235782.23	1267546.36	40°03'53.028"N	104°39'27.252"W
WILLOW 22-6-4L LP ON PLAT (470'FSL & 470'FWL,SEC.22)		7472.00	287.79	-576.88	3235803.89	1255244.42	40°01'51.456"N	104°39'28.476"W
WILLOW 22-6-4L LP REV-2 (470'FSL & 550'FWL,SEC.22)	7862.98	7472.00	287.79	-495.67	3235885.10	1255245.19	40°01'51.456"N	104°39'27.432"W

## Survey Program

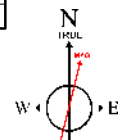
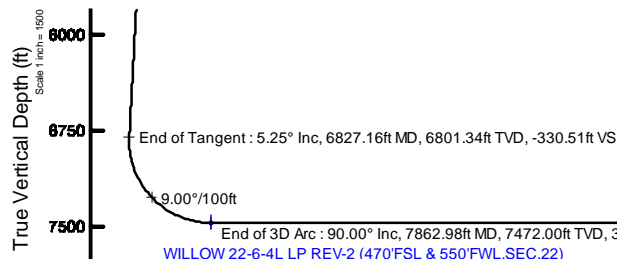
Start MD (ft)	End MD (ft)	Tool	Model	Log Name/Comment	Wellbore
17.00	1500.00	BHI NavitTrak	BHI NavitTrak (Rotating+Axial Corr)		WILLOW 22-6-4L PWB
1500.00	20165.04	BHI AutoTrak Curve	BHI AutoTrak Curve (Axial Corr, Short spacing)		WILLOW 22-6-4L PWB

## Well Profile Data

Design Comment	MD (ft)	Inc (°)	Az (°)	TVD (ft)	Local N (ft)	Local E (ft)	DLS (°/100ft)	VS (ft)
Tie On	17.00	0.000	232.156	17.00	0.00	0.00	0.00	0.00
End of Tangent	500.00	0.000	232.156	500.00	0.00	0.00	0.00	0.00
End of Build	762.54	5.251	232.156	762.17	-7.38	-9.49	2.00	-7.01
End of Tangent	6827.16	5.251	232.156	6801.34	-347.88	-447.77	0.00	-330.51
End of 3D Arc	7862.98	90.000	0.066	7472.00	287.79	-495.67	9.00	306.52
End of Tangent	20165.04	90.000	0.066	7472.00	12589.85	-481.42	0.00	12599.05

## Bottom Hole Location

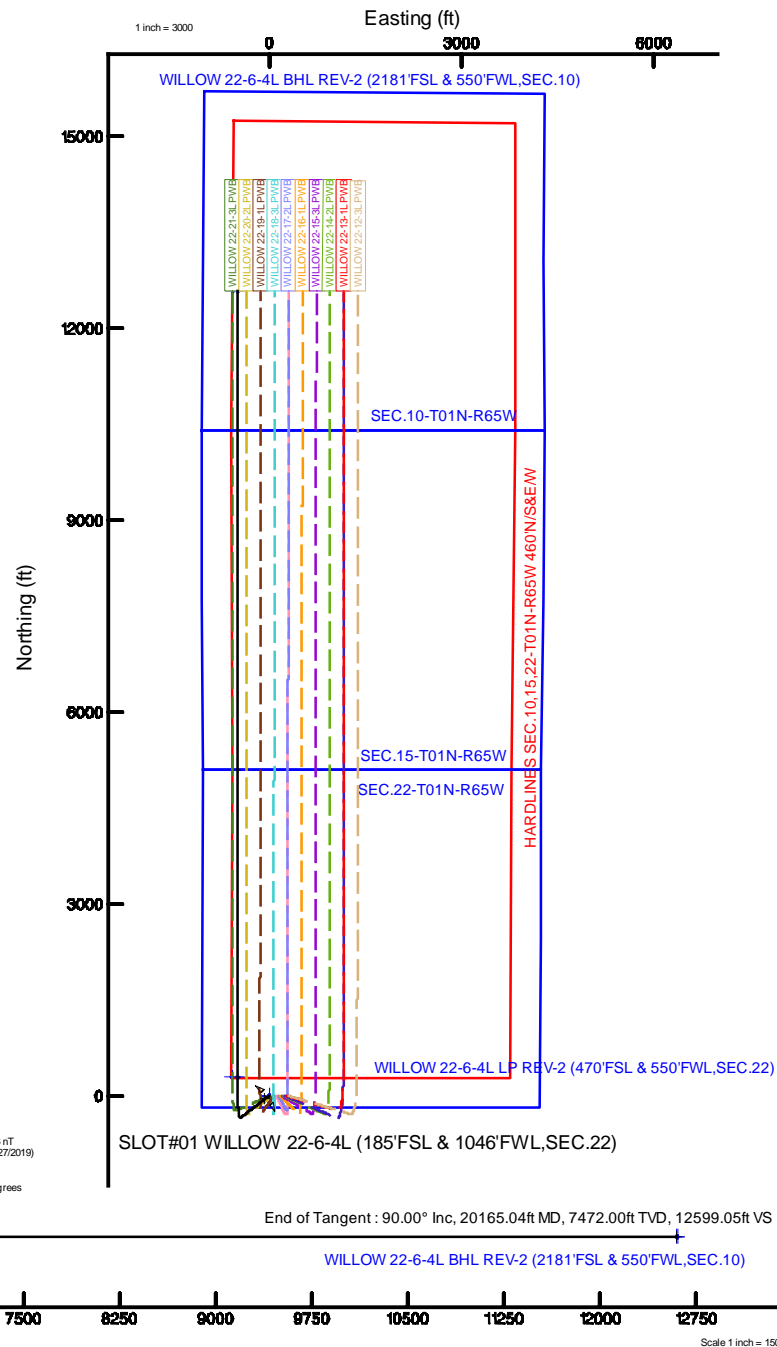
MD (ft)	Inc (°)	Az (°)	TVD (ft)	Local N (ft)	Local E (ft)	Grid East (US ft)	Grid North (US ft)	Latitude	Longitude
20165.04	90.000	0.066	7472.00	12589.85	-481.42	3235782.23	1267546.36	40°03'53.028"N	104°39'27.252"W



BGGM (1900.0 to 2020.0) Dip: 66.52° Field: 52042.6 nT  
Magnetic North is 8.13 degrees East of True North (at 2/27/2019)

To correct azimuth from Magnetic to True add 8.13 degrees

Vertical Section (ft)  
Azimuth 357.81° with reference 0.00 N, 0.00 E



# Planned Wellpath Report

WILLOW 22-6-4L PWP (REV-B.0)

Page 1 of 8

## REFERENCE WELLPATH IDENTIFICATION

Operator	CONFLUENCE RESOURCES	Slot	SLOT#01 WILLOW 22-6-4L (185'FSL & 1046'FWL, SEC.22)
Area	COLORADO	Well	WILLOW 22-6-4L
Field	WELD COUNTY (NAD83, TRUE NORTH)	Wellbore	WILLOW 22-6-4L PWB
Facility	SEC.22-T01N-R65W		

## REPORT SETUP INFORMATION

Projection System	NAD83 / Lambert Colorado SP, Northern Zone (501), US feet	Software System	WellArchitect® 5.0
North Reference	True	User	Adamkat
Scale	0.999964	Report Generated	3/15/2019 at 8:43:36 AM
Convergence at slot	0.55° East	Database/Source file	Denver/WILLOW_22-6-4L_PWP_REV-B.0_.xml

## WELLPATH LOCATION

	Local coordinates		Grid coordinates		Geographic coordinates	
	North[ft]	East[ft]	Easting[US ft]	Northing[US ft]	Latitude	Longitude
Slot Location	0.00	0.00	3236383.46	1254962.14	40°01'48.612"N	104°39'21.060"W
Facility Reference Pt			3236383.46	1254962.14	40°01'48.612"N	104°39'21.060"W
Field Reference Pt			3230456.90	1245096.09	40°00'11.664"N	104°40'38.424"W

## WELLPATH DATUM

Calculation method	Minimum curvature	RIG (17') (RKB) to Facility Vertical Datum	5108.00ft
Horizontal Reference Pt	Slot	RIG (17') (RKB) to Mean Sea Level	5108.00ft
Vertical Reference Pt	RIG (17') (RKB)	RIG (17') (RKB) to Mud Line at Slot (SLOT#01 WILLOW 22-6-4L (185'FSL & 1046'FWL, SEC.22))	5108.00ft
MD Reference Pt	RIG (17') (RKB)	Section Origin	N 0.00, E 0.00 ft
Field Vertical Reference	Mean Sea Level	Section Azimuth	357.81°

# Planned Wellpath Report

WILLOW 22-6-4L PWP (REV-B.0)

Page 2 of 8

REFERENCE WELLPATH IDENTIFICATION				
Operator	CONFLUENCE RESOURCES	Slot	SLOT#01 WILLOW 22-6-4L (185'FSL & 1046'FWL, SEC.22)	
Area	COLORADO	Well	WILLOW 22-6-4L	
Field	WELD COUNTY (NAD83, TRUE NORTH)	Wellbore	WILLOW 22-6-4L PWB	
Facility	SEC.22-T01N-R65W			

WELLPATH DATA (208 stations) † = interpolated/extrapolated station												
MD [ft]	Inclination [°]	Azimuth [°]	TVD [ft]	Vert Sect [ft]	North [ft]	East [ft]	Grid East [US ft]	Grid North [US ft]	Latitude	Longitude	DLS [°/100ft]	Comments
0.00†	0.000	232.156	0.00	0.00	0.00	0.00	3236383.46	1254962.14	40°01'48.612"N	104°39'21.060"W	0.00	
17.00	0.000	232.156	17.00	0.00	0.00	0.00	3236383.46	1254962.14	40°01'48.612"N	104°39'21.060"W	0.00	Tie On
117.00†	0.000	232.156	117.00	0.00	0.00	0.00	3236383.46	1254962.14	40°01'48.612"N	104°39'21.060"W	0.00	
217.00†	0.000	232.156	217.00	0.00	0.00	0.00	3236383.46	1254962.14	40°01'48.612"N	104°39'21.060"W	0.00	
317.00†	0.000	232.156	317.00	0.00	0.00	0.00	3236383.46	1254962.14	40°01'48.612"N	104°39'21.060"W	0.00	
417.00†	0.000	232.156	417.00	0.00	0.00	0.00	3236383.46	1254962.14	40°01'48.612"N	104°39'21.060"W	0.00	
500.00	0.000	232.156	500.00	0.00	0.00	0.00	3236383.46	1254962.14	40°01'48.612"N	104°39'21.060"W	0.00	End of Tangent
517.00†	0.340	232.156	517.00	-0.03	-0.03	-0.04	3236383.42	1254962.11	40°01'48.612"N	104°39'21.061"W	2.00	
617.00†	2.340	232.156	616.97	-1.39	-1.47	-1.89	3236381.59	1254960.65	40°01'48.598"N	104°39'21.084"W	2.00	
717.00†	4.340	232.156	716.79	-4.79	-5.04	-6.49	3236377.02	1254957.04	40°01'48.562"N	104°39'21.143"W	2.00	
762.54	5.251	232.156	762.17	-7.01	-7.38	-9.49	3236374.04	1254954.67	40°01'48.539"N	104°39'21.182"W	2.00	End of Build
817.00†	5.251	232.156	816.40	-9.91	-10.43	-13.43	3236370.13	1254951.58	40°01'48.509"N	104°39'21.233"W	0.00	
917.00†	5.251	232.156	915.98	-15.25	-16.05	-20.66	3236362.96	1254945.89	40°01'48.453"N	104°39'21.326"W	0.00	
1017.00†	5.251	232.156	1015.56	-20.58	-21.66	-27.88	3236355.79	1254940.21	40°01'48.398"N	104°39'21.418"W	0.00	
1117.00†	5.251	232.156	1115.15	-25.92	-27.28	-35.11	3236348.61	1254934.53	40°01'48.342"N	104°39'21.511"W	0.00	
1217.00†	5.251	232.156	1214.73	-31.25	-32.89	-42.34	3236341.44	1254928.85	40°01'48.287"N	104°39'21.604"W	0.00	
1317.00†	5.251	232.156	1314.31	-36.58	-38.51	-49.56	3236334.27	1254923.16	40°01'48.231"N	104°39'21.697"W	0.00	
1417.00†	5.251	232.156	1413.89	-41.92	-44.12	-56.79	3236327.10	1254917.48	40°01'48.176"N	104°39'21.790"W	0.00	
1517.00†	5.251	232.156	1513.47	-47.25	-49.73	-64.02	3236319.92	1254911.80	40°01'48.121"N	104°39'21.883"W	0.00	
1617.00†	5.251	232.156	1613.05	-52.59	-55.35	-71.24	3236312.75	1254906.11	40°01'48.065"N	104°39'21.976"W	0.00	
1717.00†	5.251	232.156	1712.63	-57.92	-60.96	-78.47	3236305.58	1254900.43	40°01'48.010"N	104°39'22.069"W	0.00	
1817.00†	5.251	232.156	1812.21	-63.26	-66.58	-85.70	3236298.40	1254894.75	40°01'47.954"N	104°39'22.162"W	0.00	
1917.00†	5.251	232.156	1911.79	-68.59	-72.19	-92.92	3236291.23	1254889.07	40°01'47.899"N	104°39'22.255"W	0.00	
2017.00†	5.251	232.156	2011.37	-73.92	-77.81	-100.15	3236284.06	1254883.38	40°01'47.843"N	104°39'22.347"W	0.00	
2117.00†	5.251	232.156	2110.95	-79.26	-83.42	-107.38	3236276.89	1254877.70	40°01'47.788"N	104°39'22.440"W	0.00	
2217.00†	5.251	232.156	2210.53	-84.59	-89.04	-114.60	3236269.71	1254872.02	40°01'47.732"N	104°39'22.533"W	0.00	
2317.00†	5.251	232.156	2310.11	-89.93	-94.65	-121.83	3236262.54	1254866.33	40°01'47.677"N	104°39'22.626"W	0.00	
2417.00†	5.251	232.156	2409.69	-95.26	-100.27	-129.06	3236255.37	1254860.65	40°01'47.621"N	104°39'22.719"W	0.00	
2517.00†	5.251	232.156	2509.27	-100.60	-105.88	-136.29	3236248.19	1254854.97	40°01'47.566"N	104°39'22.812"W	0.00	
2617.00†	5.251	232.156	2608.85	-105.93	-111.49	-143.51	3236241.02	1254849.29	40°01'47.510"N	104°39'22.905"W	0.00	
2717.00†	5.251	232.156	2708.43	-111.26	-117.11	-150.74	3236233.85	1254843.60	40°01'47.455"N	104°39'22.998"W	0.00	
2817.00†	5.251	232.156	2808.01	-116.60	-122.72	-157.97	3236226.68	1254837.92	40°01'47.399"N	104°39'23.091"W	0.00	
2917.00†	5.251	232.156	2907.59	-121.93	-128.34	-165.19	3236219.50	1254832.24	40°01'47.344"N	104°39'23.184"W	0.00	
3017.00†	5.251	232.156	3007.17	-127.27	-133.95	-172.42	3236212.33	1254826.55	40°01'47.288"N	104°39'23.276"W	0.00	
3117.00†	5.251	232.156	3106.75	-132.60	-139.57	-179.65	3236205.16	1254820.87	40°01'47.233"N	104°39'23.369"W	0.00	
3217.00†	5.251	232.156	3206.33	-137.94	-145.18	-186.87	3236197.99	1254815.19	40°01'47.177"N	104°39'23.462"W	0.00	
3317.00†	5.251	232.156	3305.91	-143.27	-150.80	-194.10	3236190.81	1254809.51	40°01'47.122"N	104°39'23.555"W	0.00	
3417.00†	5.251	232.156	3405.49	-148.60	-156.41	-201.33	3236183.64	1254803.82	40°01'47.066"N	104°39'23.648"W	0.00	
3517.00†	5.251	232.156	3505.07	-153.94	-162.03	-208.55	3236176.47	1254798.14	40°01'47.011"N	104°39'23.741"W	0.00	
3617.00†	5.251	232.156	3604.65	-159.27	-167.64	-215.78	3236169.29	1254792.46	40°01'46.955"N	104°39'23.834"W	0.00	
3717.00†	5.251	232.156	3704.23	-164.61	-173.25	-223.01	3236162.12	1254786.77	40°01'46.900"N	104°39'23.927"W	0.00	
3817.00†	5.251	232.156	3803.82	-169.94	-178.87	-230.23	3236154.95	1254781.09	40°01'46.844"N	104°39'24.020"W	0.00	
3917.00†	5.251	232.156	3903.40	-175.28	-184.48	-237.46	3236147.78	1254775.41	40°01'46.789"N	104°39'24.113"W	0.00	
4017.00†	5.251	232.156	4002.98	-180.61	-190.10	-244.69	3236140.60	1254769.73	40°01'46.733"N	104°39'24.206"W	0.00	
4117.00†	5.251	232.156	4102.56	-185.94	-195.71	-251.91	3236133.43	1254764.04	40°01'46.678"N	104°39'24.298"W	0.00	

# Planned Wellpath Report

WILLOW 22-6-4L PWP (REV-B.0)

Page 3 of 8

REFERENCE WELLPATH IDENTIFICATION			
Operator	CONFLUENCE RESOURCES	Slot	SLOT#01 WILLOW 22-6-4L (185'FSL & 1046'FWL, SEC.22)
Area	COLORADO	Well	WILLOW 22-6-4L
Field	WELD COUNTY (NAD83, TRUE NORTH)	Wellbore	WILLOW 22-6-4L PWB
Facility	SEC.22-T01N-R65W		

WELLPATH DATA (208 stations) † = interpolated/extrapolated station												
MD [ft]	Inclination [°]	Azimuth [°]	TVD [ft]	Vert Sect [ft]	North [ft]	East [ft]	Grid East [US ft]	Grid North [US ft]	Latitude	Longitude	DLS [°/100ft]	Comments
4217.00†	5.251	232.156	4202.14	-191.28	-201.33	-259.14	3236126.26	1254758.36	40°01'46.622"N	104°39'24.391"W	0.00	
4317.00†	5.251	232.156	4301.72	-196.61	-206.94	-266.37	3236119.08	1254752.68	40°01'46.567"N	104°39'24.484"W	0.00	
4417.00†	5.251	232.156	4401.30	-201.95	-212.56	-273.60	3236111.91	1254746.99	40°01'46.511"N	104°39'24.577"W	0.00	
4517.00†	5.251	232.156	4500.88	-207.28	-218.17	-280.82	3236104.74	1254741.31	40°01'46.456"N	104°39'24.670"W	0.00	
4617.00†	5.251	232.156	4600.46	-212.62	-223.79	-288.05	3236097.57	1254735.63	40°01'46.400"N	104°39'24.763"W	0.00	
4717.00†	5.251	232.156	4700.04	-217.95	-229.40	-295.28	3236090.39	1254729.95	40°01'46.345"N	104°39'24.856"W	0.00	
4817.00†	5.251	232.156	4799.62	-223.28	-235.01	-302.50	3236083.22	1254724.26	40°01'46.290"N	104°39'24.949"W	0.00	
4917.00†	5.251	232.156	4899.20	-228.62	-240.63	-309.73	3236076.05	1254718.58	40°01'46.234"N	104°39'25.042"W	0.00	
5017.00†	5.251	232.156	4998.78	-233.95	-246.24	-316.96	3236068.88	1254712.90	40°01'46.179"N	104°39'25.135"W	0.00	
5117.00†	5.251	232.156	5098.36	-239.29	-251.86	-324.18	3236061.70	1254707.21	40°01'46.123"N	104°39'25.227"W	0.00	
5217.00†	5.251	232.156	5197.94	-244.62	-257.47	-331.41	3236054.53	1254701.53	40°01'46.068"N	104°39'25.320"W	0.00	
5317.00†	5.251	232.156	5297.52	-249.96	-263.09	-338.64	3236047.36	1254695.85	40°01'46.012"N	104°39'25.413"W	0.00	
5417.00†	5.251	232.156	5397.10	-255.29	-268.70	-345.86	3236040.18	1254690.17	40°01'45.957"N	104°39'25.506"W	0.00	
5517.00†	5.251	232.156	5496.68	-260.62	-274.32	-353.09	3236033.01	1254684.48	40°01'45.901"N	104°39'25.599"W	0.00	
5617.00†	5.251	232.156	5596.26	-265.96	-279.93	-360.32	3236025.84	1254678.80	40°01'45.846"N	104°39'25.692"W	0.00	
5717.00†	5.251	232.156	5695.84	-271.29	-285.55	-367.54	3236018.67	1254673.12	40°01'45.790"N	104°39'25.785"W	0.00	
5817.00†	5.251	232.156	5795.42	-276.63	-291.16	-374.77	3236011.49	1254667.43	40°01'45.735"N	104°39'25.878"W	0.00	
5917.00†	5.251	232.156	5895.00	-281.96	-296.77	-382.00	3236004.32	1254661.75	40°01'45.679"N	104°39'25.971"W	0.00	
6017.00†	5.251	232.156	5994.58	-287.30	-302.39	-389.22	3235997.15	1254656.07	40°01'45.624"N	104°39'26.064"W	0.00	
6117.00†	5.251	232.156	6094.16	-292.63	-308.00	-396.45	3235989.97	1254650.39	40°01'45.568"N	104°39'26.156"W	0.00	
6217.00†	5.251	232.156	6193.74	-297.96	-313.62	-403.68	3235982.80	1254644.70	40°01'45.513"N	104°39'26.249"W	0.00	
6317.00†	5.251	232.156	6293.32	-303.30	-319.23	-410.91	3235975.63	1254639.02	40°01'45.457"N	104°39'26.342"W	0.00	
6417.00†	5.251	232.156	6392.90	-308.63	-324.85	-418.13	3235968.46	1254633.34	40°01'45.402"N	104°39'26.435"W	0.00	
6517.00†	5.251	232.156	6492.49	-313.97	-330.46	-425.36	3235961.28	1254627.65	40°01'45.346"N	104°39'26.528"W	0.00	
6617.00†	5.251	232.156	6592.07	-319.30	-336.08	-432.59	3235954.11	1254621.97	40°01'45.291"N	104°39'26.621"W	0.00	
6717.00†	5.251	232.156	6691.65	-324.64	-341.69	-439.81	3235946.94	1254616.29	40°01'45.235"N	104°39'26.714"W	0.00	
6817.00†	5.251	232.156	6791.23	-329.97	-347.30	-447.04	3235939.76	1254610.61	40°01'45.180"N	104°39'26.807"W	0.00	
6827.16	5.251	232.156	6801.34	-330.51	-347.88	-447.77	3235939.04	1254610.03	40°01'45.174"N	104°39'26.816"W	0.00	End of Tangent
6917.00†	6.387	319.697	6890.86	-328.97	-346.58	-454.26	3235932.53	1254611.26	40°01'45.187"N	104°39'26.900"W	9.00	
7017.00†	14.458	343.733	6989.17	-312.45	-330.33	-461.37	3235925.27	1254627.45	40°01'45.348"N	104°39'26.991"W	9.00	
7117.00†	23.215	350.334	7083.74	-280.74	-298.85	-468.19	3235918.15	1254658.86	40°01'45.659"N	104°39'27.079"W	9.00	
7217.00†	32.103	353.430	7172.22	-234.61	-252.93	-474.56	3235911.35	1254704.71	40°01'46.112"N	104°39'27.160"W	9.00	
7317.00†	41.035	355.288	7252.46	-175.20	-193.69	-480.30	3235905.04	1254763.89	40°01'46.698"N	104°39'27.234"W	9.00	
7417.00†	49.989	356.577	7322.47	-103.97	-122.60	-485.30	3235899.37	1254834.92	40°01'47.400"N	104°39'27.299"W	9.00	
7517.00†	58.953	357.565	7380.52	-22.68	-41.41	-489.41	3235894.48	1254916.07	40°01'48.203"N	104°39'27.352"W	9.00	
7617.00†	67.923	358.381	7425.19	66.67	47.89	-492.55	3235890.50	1255005.33	40°01'49.085"N	104°39'27.392"W	9.00	
7717.00†	76.897	359.099	7455.38	161.89	143.09	-494.63	3235887.51	1255100.51	40°01'50.026"N	104°39'27.419"W	9.00	
7817.00†	85.873	359.767	7470.34	260.62	241.86	-495.60	3235885.60	1255199.26	40°01'51.002"N	104°39'27.431"W	9.00	
7862.98	90.000	0.066	7472.00†	306.52	287.79	-495.67	3235885.10	1255245.19	40°01'51.456"N	104°39'27.432"W	9.00	End of 3D Arc
7917.00†	90.000	0.066	7472.00	360.50	341.82	-495.60	3235884.65	1255299.21	40°01'51.990"N	104°39'27.431"W	0.00	
8017.00†	90.000	0.066	7472.00	460.43	441.82	-495.49	3235883.81	1255399.20	40°01'52.978"N	104°39'27.430"W	0.00	
8117.00†	90.000	0.066	7472.00	560.35	541.82	-495.37	3235882.97	1255499.19	40°01'53.966"N	104°39'27.428"W	0.00	
8217.00†	90.000	0.066	7472.00	660.27	641.82	-495.26	3235882.14	1255599.19	40°01'54.955"N	104°39'27.427"W	0.00	
8317.00†	90.000	0.066	7472.00	760.19	741.82	-495.14	3235881.30	1255699.18	40°01'55.943"N	104°39'27.425"W	0.00	
8417.00†	90.000	0.066	7472.00	860.12	841.82	-495.02	3235880.46	1255799.17	40°01'56.931"N	104°39'27.424"W	0.00	

# Planned Wellpath Report

WILLOW 22-6-4L PWP (REV-B.0)

Page 4 of 8

REFERENCE WELLPATH IDENTIFICATION			
Operator	CONFLUENCE RESOURCES	Slot	SLOT#01 WILLOW 22-6-4L (185'FSL & 1046'FWL, SEC.22)
Area	COLORADO	Well	WILLOW 22-6-4L
Field	WELD COUNTY (NAD83, TRUE NORTH)	Wellbore	WILLOW 22-6-4L PWB
Facility	SEC.22-T01N-R65W		

WELLPATH DATA (208 stations) † = interpolated/extrapolated station												
MD [ft]	Inclination [°]	Azimuth [°]	TVD [ft]	Vert Sect [ft]	North [ft]	East [ft]	Grid East [US ft]	Grid North [US ft]	Latitude	Longitude	DLS [°/100ft]	Comments
8517.00†	90.000	0.066	7472.00	960.04	941.82	-494.91	3235879.63	1255899.16	40°01'57.919"N	104°39'27.422"W	0.00	
8617.00†	90.000	0.066	7472.00	1059.96	1041.82	-494.79	3235878.79	1255999.16	40°01'58.907"N	104°39'27.421"W	0.00	
8717.00†	90.000	0.066	7472.00	1159.88	1141.82	-494.68	3235877.96	1256099.15	40°01'59.896"N	104°39'27.420"W	0.00	
8817.00†	90.000	0.066	7472.00	1259.81	1241.82	-494.56	3235877.12	1256199.14	40°02'00.884"N	104°39'27.418"W	0.00	
8917.00†	90.000	0.066	7472.00	1359.73	1341.82	-494.45	3235876.28	1256299.13	40°02'01.872"N	104°39'27.417"W	0.00	
9017.00†	90.000	0.066	7472.00	1459.65	1441.82	-494.33	3235875.45	1256399.13	40°02'02.860"N	104°39'27.415"W	0.00	
9117.00†	90.000	0.066	7472.00	1559.57	1541.82	-494.21	3235874.61	1256499.12	40°02'03.849"N	104°39'27.414"W	0.00	
9217.00†	90.000	0.066	7472.00	1659.50	1641.82	-494.10	3235873.78	1256599.11	40°02'04.837"N	104°39'27.412"W	0.00	
9317.00†	90.000	0.066	7472.00	1759.42	1741.82	-493.98	3235872.94	1256699.11	40°02'05.825"N	104°39'27.411"W	0.00	
9417.00†	90.000	0.066	7472.00	1859.34	1841.82	-493.87	3235872.10	1256799.10	40°02'06.813"N	104°39'27.409"W	0.00	
9517.00†	90.000	0.066	7472.00	1959.26	1941.82	-493.75	3235871.27	1256899.09	40°02'07.801"N	104°39'27.408"W	0.00	
9617.00†	90.000	0.066	7472.00	2059.19	2041.82	-493.64	3235870.43	1256999.08	40°02'08.790"N	104°39'27.406"W	0.00	
9717.00†	90.000	0.066	7472.00	2159.11	2141.82	-493.52	3235869.59	1257099.08	40°02'09.778"N	104°39'27.405"W	0.00	
9817.00†	90.000	0.066	7472.00	2259.03	2241.82	-493.40	3235868.76	1257199.07	40°02'10.766"N	104°39'27.403"W	0.00	
9917.00†	90.000	0.066	7472.00	2358.95	2341.82	-493.29	3235867.92	1257299.06	40°02'11.754"N	104°39'27.402"W	0.00	
10017.00†	90.000	0.066	7472.00	2458.88	2441.82	-493.17	3235867.09	1257399.05	40°02'12.743"N	104°39'27.400"W	0.00	
10117.00†	90.000	0.066	7472.00	2558.80	2541.82	-493.06	3235866.25	1257499.05	40°02'13.731"N	104°39'27.399"W	0.00	
10217.00†	90.000	0.066	7472.00	2658.72	2641.82	-492.94	3235865.41	1257599.04	40°02'14.719"N	104°39'27.398"W	0.00	
10317.00†	90.000	0.066	7472.00	2758.64	2741.82	-492.82	3235864.58	1257699.03	40°02'15.707"N	104°39'27.396"W	0.00	
10417.00†	90.000	0.066	7472.00	2858.57	2841.82	-492.71	3235863.74	1257799.03	40°02'16.696"N	104°39'27.395"W	0.00	
10517.00†	90.000	0.066	7472.00	2958.49	2941.82	-492.59	3235862.91	1257899.02	40°02'17.684"N	104°39'27.393"W	0.00	
10617.00†	90.000	0.066	7472.00	3058.41	3041.82	-492.48	3235862.07	1257999.01	40°02'18.672"N	104°39'27.392"W	0.00	
10717.00†	90.000	0.066	7472.00	3158.33	3141.82	-492.36	3235861.23	1258099.00	40°02'19.660"N	104°39'27.390"W	0.00	
10817.00†	90.000	0.066	7472.00	3258.26	3241.81	-492.25	3235860.40	1258199.00	40°02'20.648"N	104°39'27.389"W	0.00	
10917.00†	90.000	0.066	7472.00	3358.18	3341.81	-492.13	3235859.56	1258298.99	40°02'21.637"N	104°39'27.387"W	0.00	
11017.00†	90.000	0.066	7472.00	3458.10	3441.81	-492.01	3235858.72	1258398.98	40°02'22.625"N	104°39'27.386"W	0.00	
11117.00†	90.000	0.066	7472.00	3558.02	3541.81	-491.90	3235857.89	1258498.97	40°02'23.613"N	104°39'27.384"W	0.00	
11217.00†	90.000	0.066	7472.00	3657.95	3641.81	-491.78	3235857.05	1258598.97	40°02'24.601"N	104°39'27.383"W	0.00	
11317.00†	90.000	0.066	7472.00	3757.87	3741.81	-491.67	3235856.22	1258698.96	40°02'25.590"N	104°39'27.381"W	0.00	
11417.00†	90.000	0.066	7472.00	3857.79	3841.81	-491.55	3235855.38	1258798.95	40°02'26.578"N	104°39'27.380"W	0.00	
11517.00†	90.000	0.066	7472.00	3957.71	3941.81	-491.44	3235854.54	1258898.95	40°02'27.566"N	104°39'27.379"W	0.00	
11617.00†	90.000	0.066	7472.00	4057.64	4041.81	-491.32	3235853.71	1258998.94	40°02'28.554"N	104°39'27.377"W	0.00	
11717.00†	90.000	0.066	7472.00	4157.56	4141.81	-491.20	3235852.87	1259098.93	40°02'29.542"N	104°39'27.376"W	0.00	
11817.00†	90.000	0.066	7472.00	4257.48	4241.81	-491.09	3235852.04	1259198.92	40°02'30.531"N	104°39'27.374"W	0.00	
11917.00†	90.000	0.066	7472.00	4357.40	4341.81	-490.97	3235851.20	1259298.92	40°02'31.519"N	104°39'27.373"W	0.00	
12017.00†	90.000	0.066	7472.00	4457.33	4441.81	-490.86	3235850.36	1259398.91	40°02'32.507"N	104°39'27.371"W	0.00	
12117.00†	90.000	0.066	7472.00	4557.25	4541.81	-490.74	3235849.53	1259498.90	40°02'33.495"N	104°39'27.370"W	0.00	
12217.00†	90.000	0.066	7472.00	4657.17	4641.81	-490.63	3235848.69	1259598.89	40°02'34.484"N	104°39'27.368"W	0.00	
12317.00†	90.000	0.066	7472.00	4757.09	4741.81	-490.51	3235847.85	1259698.89	40°02'35.472"N	104°39'27.367"W	0.00	
12417.00†	90.000	0.066	7472.00	4857.02	4841.81	-490.39	3235847.02	1259798.88	40°02'36.460"N	104°39'27.365"W	0.00	
12517.00†	90.000	0.066	7472.00	4956.94	4941.81	-490.28	3235846.18	1259898.87	40°02'37.448"N	104°39'27.364"W	0.00	
12617.00†	90.000	0.066	7472.00	5056.86	5041.81	-490.16	3235845.35	1259998.87	40°02'38.436"N	104°39'27.362"W	0.00	
12717.00†	90.000	0.066	7472.00	5156.78	5141.81	-490.05	3235844.51	1260098.86	40°02'39.425"N	104°39'27.361"W	0.00	
12817.00†	90.000	0.066	7472.00	5256.71	5241.81	-489.93	3235843.67	1260198.85	40°02'40.413"N	104°39'27.360"W	0.00	
12917.00†	90.000	0.066	7472.00	5356.63	5341.81	-489.82	3235842.84	1260298.84	40°02'41.401"N	104°39'27.358"W	0.00	

# Planned Wellpath Report

WILLOW 22-6-4L PWP (REV-B.0)

Page 5 of 8

REFERENCE WELLPATH IDENTIFICATION			
Operator	CONFLUENCE RESOURCES	Slot	SLOT#01 WILLOW 22-6-4L (185'FSL & 1046'FWL, SEC.22)
Area	COLORADO	Well	WILLOW 22-6-4L
Field	WELD COUNTY (NAD83, TRUE NORTH)	Wellbore	WILLOW 22-6-4L PWB
Facility	SEC.22-T01N-R65W		

WELLPATH DATA (208 stations) † = interpolated/extrapolated station												
MD [ft]	Inclination [°]	Azimuth [°]	TVD [ft]	Vert Sect [ft]	North [ft]	East [ft]	Grid East [US ft]	Grid North [US ft]	Latitude	Longitude	DLS [°/100ft]	Comments
13017.00†	90.000	0.066	7472.00	5456.55	5441.81	-489.70	3235842.00	1260398.84	40°02'42.389"N	104°39'27.357"W	0.00	
13117.00†	90.000	0.066	7472.00	5556.47	5541.81	-489.58	3235841.16	1260498.83	40°02'43.378"N	104°39'27.355"W	0.00	
13217.00†	90.000	0.066	7472.00	5656.40	5641.81	-489.47	3235840.33	1260598.82	40°02'44.366"N	104°39'27.354"W	0.00	
13317.00†	90.000	0.066	7472.00	5756.32	5741.81	-489.35	3235839.49	1260698.81	40°02'45.354"N	104°39'27.352"W	0.00	
13417.00†	90.000	0.066	7472.00	5856.24	5841.81	-489.24	3235838.66	1260798.81	40°02'46.342"N	104°39'27.351"W	0.00	
13517.00†	90.000	0.066	7472.00	5956.16	5941.81	-489.12	3235837.82	1260898.80	40°02'47.331"N	104°39'27.349"W	0.00	
13617.00†	90.000	0.066	7472.00	6056.09	6041.81	-489.00	3235836.98	1260998.79	40°02'48.319"N	104°39'27.348"W	0.00	
13717.00†	90.000	0.066	7472.00	6156.01	6141.81	-488.89	3235836.15	1261098.79	40°02'49.307"N	104°39'27.346"W	0.00	
13817.00†	90.000	0.066	7472.00	6255.93	6241.81	-488.77	3235835.31	1261198.78	40°02'50.295"N	104°39'27.345"W	0.00	
13917.00†	90.000	0.066	7472.00	6355.85	6341.81	-488.66	3235834.48	1261298.77	40°02'51.283"N	104°39'27.343"W	0.00	
14017.00†	90.000	0.066	7472.00	6455.78	6441.81	-488.54	3235833.64	1261398.76	40°02'52.272"N	104°39'27.342"W	0.00	
14117.00†	90.000	0.066	7472.00	6555.70	6541.81	-488.43	3235832.80	1261498.76	40°02'53.260"N	104°39'27.341"W	0.00	
14217.00†	90.000	0.066	7472.00	6655.62	6641.81	-488.31	3235831.97	1261598.75	40°02'54.248"N	104°39'27.339"W	0.00	
14317.00†	90.000	0.066	7472.00	6755.54	6741.81	-488.19	3235831.13	1261698.74	40°02'55.236"N	104°39'27.338"W	0.00	
14417.00†	90.000	0.066	7472.00	6855.47	6841.81	-488.08	3235830.29	1261798.73	40°02'56.225"N	104°39'27.336"W	0.00	
14517.00†	90.000	0.066	7472.00	6955.39	6941.81	-487.96	3235829.46	1261898.73	40°02'57.213"N	104°39'27.335"W	0.00	
14617.00†	90.000	0.066	7472.00	7055.31	7041.81	-487.85	3235828.62	1261998.72	40°02'58.201"N	104°39'27.333"W	0.00	
14717.00†	90.000	0.066	7472.00	7155.23	7141.81	-487.73	3235827.79	1262098.71	40°02'59.189"N	104°39'27.332"W	0.00	
14817.00†	90.000	0.066	7472.00	7255.16	7241.81	-487.62	3235826.95	1262198.71	40°03'00.177"N	104°39'27.330"W	0.00	
14917.00†	90.000	0.066	7472.00	7355.08	7341.81	-487.50	3235826.11	1262298.70	40°03'01.166"N	104°39'27.329"W	0.00	
15017.00†	90.000	0.066	7472.00	7455.00	7441.81	-487.38	3235825.28	1262398.69	40°03'02.154"N	104°39'27.327"W	0.00	
15117.00†	90.000	0.066	7472.00	7554.92	7541.81	-487.27	3235824.44	1262498.68	40°03'03.142"N	104°39'27.326"W	0.00	
15217.00†	90.000	0.066	7472.00	7654.85	7641.81	-487.15	3235823.61	1262598.68	40°03'04.130"N	104°39'27.324"W	0.00	
15317.00†	90.000	0.066	7472.00	7754.77	7741.81	-487.04	3235822.77	1262698.67	40°03'05.119"N	104°39'27.323"W	0.00	
15417.00†	90.000	0.066	7472.00	7854.69	7841.81	-486.92	3235821.93	1262798.66	40°03'06.107"N	104°39'27.321"W	0.00	
15517.00†	90.000	0.066	7472.00	7954.61	7941.81	-486.81	3235821.10	1262898.65	40°03'07.095"N	104°39'27.320"W	0.00	
15617.00†	90.000	0.066	7472.00	8054.54	8041.81	-486.69	3235820.26	1262998.65	40°03'08.083"N	104°39'27.319"W	0.00	
15717.00†	90.000	0.066	7472.00	8154.46	8141.81	-486.57	3235819.42	1263098.64	40°03'09.071"N	104°39'27.317"W	0.00	
15817.00†	90.000	0.066	7472.00	8254.38	8241.81	-486.46	3235818.59	1263198.63	40°03'10.060"N	104°39'27.316"W	0.00	
15917.00†	90.000	0.066	7472.00	8354.30	8341.81	-486.34	3235817.75	1263298.63	40°03'11.048"N	104°39'27.314"W	0.00	
16017.00†	90.000	0.066	7472.00	8454.23	8441.81	-486.23	3235816.92	1263398.62	40°03'12.036"N	104°39'27.313"W	0.00	
16117.00†	90.000	0.066	7472.00	8554.15	8541.81	-486.11	3235816.08	1263498.61	40°03'13.024"N	104°39'27.311"W	0.00	
16217.00†	90.000	0.066	7472.00	8654.07	8641.81	-486.00	3235815.24	1263598.60	40°03'14.013"N	104°39'27.310"W	0.00	
16317.00†	90.000	0.066	7472.00	8753.99	8741.81	-485.88	3235814.41	1263698.60	40°03'15.001"N	104°39'27.308"W	0.00	
16417.00†	90.000	0.066	7472.00	8853.92	8841.81	-485.76	3235813.57	1263798.59	40°03'15.989"N	104°39'27.307"W	0.00	
16517.00†	90.000	0.066	7472.00	8953.84	8941.81	-485.65	3235812.74	1263898.58	40°03'16.977"N	104°39'27.305"W	0.00	
16617.00†	90.000	0.066	7472.00	9053.76	9041.81	-485.53	3235811.90	1263998.57	40°03'17.965"N	104°39'27.304"W	0.00	
16717.00†	90.000	0.066	7472.00	9153.68	9141.81	-485.42	3235811.06	1264098.57	40°03'18.954"N	104°39'27.302"W	0.00	
16817.00†	90.000	0.066	7472.00	9253.61	9241.81	-485.30	3235810.23	1264198.56	40°03'19.942"N	104°39'27.301"W	0.00	
16917.00†	90.000	0.066	7472.00	9353.53	9341.81	-485.18	3235809.39	1264298.55	40°03'20.930"N	104°39'27.300"W	0.00	
17017.00†	90.000	0.066	7472.00	9453.45	9441.81	-485.07	3235808.55	1264398.55	40°03'21.918"N	104°39'27.298"W	0.00	
17117.00†	90.000	0.066	7472.00	9553.37	9541.81	-484.95	3235807.72	1264498.54	40°03'22.907"N	104°39'27.297"W	0.00	
17217.00†	90.000	0.066	7472.00	9653.30	9641.81	-484.84	3235806.88	1264598.53	40°03'23.895"N	104°39'27.295"W	0.00	
17317.00†	90.000	0.066	7472.00	9753.22	9741.81	-484.72	3235806.05	1264698.52	40°03'24.883"N	104°39'27.294"W	0.00	
17417.00†	90.000	0.066	7472.00	9853.14	9841.81	-484.61	3235805.21	1264798.52	40°03'25.871"N	104°39'27.292"W	0.00	



# Planned Wellpath Report

WILLOW 22-6-4L PWP (REV-B.0)

Page 6 of 8

REFERENCE WELLPATH IDENTIFICATION			
Operator	CONFLUENCE RESOURCES	Slot	SLOT#01 WILLOW 22-6-4L (185'FSL & 1046'FWL, SEC.22)
Area	COLORADO	Well	WILLOW 22-6-4L
Field	WELD COUNTY (NAD83, TRUE NORTH)	Wellbore	WILLOW 22-6-4L PWB
Facility	SEC.22-T01N-R65W		

WELLPATH DATA (208 stations) † = interpolated/extrapolated station												
MD [ft]	Inclination [°]	Azimuth [°]	TVD [ft]	Vert Sect [ft]	North [ft]	East [ft]	Grid East [US ft]	Grid North [US ft]	Latitude	Longitude	DLS [°/100ft]	Comments
17517.00†	90.000	0.066	7472.00	9953.06	9941.81	-484.49	3235804.37	1264898.51	40°03'26.859"N	104°39'27.291"W	0.00	
17617.00†	90.000	0.066	7472.00	10052.99	10041.81	-484.37	3235803.54	1264998.50	40°03'27.848"N	104°39'27.289"W	0.00	
17717.00†	90.000	0.066	7472.00	10152.91	10141.81	-484.26	3235802.70	1265098.49	40°03'28.836"N	104°39'27.288"W	0.00	
17817.00†	90.000	0.066	7472.00	10252.83	10241.81	-484.14	3235801.87	1265198.49	40°03'29.824"N	104°39'27.286"W	0.00	
17917.00†	90.000	0.066	7472.00	10352.75	10341.81	-484.03	3235801.03	1265298.48	40°03'30.812"N	104°39'27.285"W	0.00	
18017.00†	90.000	0.066	7472.00	10452.68	10441.81	-483.91	3235800.19	1265398.47	40°03'31.801"N	104°39'27.283"W	0.00	
18117.00†	90.000	0.066	7472.00	10552.60	10541.81	-483.80	3235799.36	1265498.47	40°03'32.789"N	104°39'27.282"W	0.00	
18217.00†	90.000	0.066	7472.00	10652.52	10641.81	-483.68	3235798.52	1265598.46	40°03'33.777"N	104°39'27.281"W	0.00	
18317.00†	90.000	0.066	7472.00	10752.44	10741.81	-483.56	3235797.68	1265698.45	40°03'34.765"N	104°39'27.279"W	0.00	
18417.00†	90.000	0.066	7472.00	10852.37	10841.81	-483.45	3235796.85	1265798.44	40°03'35.753"N	104°39'27.278"W	0.00	
18517.00†	90.000	0.066	7472.00	10952.29	10941.81	-483.33	3235796.01	1265898.44	40°03'36.742"N	104°39'27.276"W	0.00	
18617.00†	90.000	0.066	7472.00	11052.21	11041.81	-483.22	3235795.18	1265998.43	40°03'37.730"N	104°39'27.275"W	0.00	
18717.00†	90.000	0.066	7472.00	11152.13	11141.81	-483.10	3235794.34	1266098.42	40°03'38.718"N	104°39'27.273"W	0.00	
18817.00†	90.000	0.066	7472.00	11252.06	11241.81	-482.99	3235793.50	1266198.41	40°03'39.706"N	104°39'27.272"W	0.00	
18917.00†	90.000	0.066	7472.00	11351.98	11341.81	-482.87	3235792.67	1266298.41	40°03'40.695"N	104°39'27.270"W	0.00	
19017.00†	90.000	0.066	7472.00	11451.90	11441.81	-482.75	3235791.83	1266398.40	40°03'41.683"N	104°39'27.269"W	0.00	
19117.00†	90.000	0.066	7472.00	11551.82	11541.81	-482.64	3235791.00	1266498.39	40°03'42.671"N	104°39'27.267"W	0.00	
19217.00†	90.000	0.066	7472.00	11651.74	11641.81	-482.52	3235790.16	1266598.39	40°03'43.659"N	104°39'27.266"W	0.00	
19317.00†	90.000	0.066	7472.00	11751.67	11741.81	-482.41	3235789.32	1266698.38	40°03'44.647"N	104°39'27.264"W	0.00	
19417.00†	90.000	0.066	7472.00	11851.59	11841.81	-482.29	3235788.49	1266798.37	40°03'45.636"N	104°39'27.263"W	0.00	
19517.00†	90.000	0.066	7472.00	11951.51	11941.81	-482.18	3235787.65	1266898.36	40°03'46.624"N	104°39'27.261"W	0.00	
19617.00†	90.000	0.066	7472.00	12051.43	12041.81	-482.06	3235786.81	1266998.36	40°03'47.612"N	104°39'27.260"W	0.00	
19717.00†	90.000	0.066	7472.00	12151.36	12141.81	-481.94	3235785.98	1267098.35	40°03'48.600"N	104°39'27.259"W	0.00	
19817.00†	90.000	0.066	7472.00	12251.28	12241.81	-481.83	3235785.14	1267198.34	40°03'49.589"N	104°39'27.257"W	0.00	
19917.00†	90.000	0.066	7472.00	12351.20	12341.81	-481.71	3235784.31	1267298.33	40°03'50.577"N	104°39'27.256"W	0.00	
20017.00†	90.000	0.066	7472.00	12451.12	12441.81	-481.60	3235783.47	1267398.33	40°03'51.565"N	104°39'27.254"W	0.00	
20117.00†	90.000	0.066	7472.00	12551.05	12541.81	-481.48	3235782.63	1267498.32	40°03'52.553"N	104°39'27.253"W	0.00	
20165.04	90.000	0.066	7472.00†	12599.05	12589.85	-481.42	3235782.23	1267546.36	40°03'53.028"N	104°39'27.252"W	0.00	End of Tangent

HOLE & CASING SECTIONS - Ref Wellbore: WILLOW 22-6-4L PWB Ref Wellpath: WILLOW 22-6-4L PWP (REV-B.0)									
String/Diameter	Start MD [ft]	End MD [ft]	Interval [ft]	Start TVD [ft]	End TVD [ft]	Start N/S [ft]	Start E/W [ft]	End N/S [ft]	End E/W [ft]
9.625in Casing Surface	17.00	1500.00	1483.00	17.00	1496.54	0.00	0.00	-48.78	-62.79

# Planned Wellpath Report

WILLOW 22-6-4L PWP (REV-B.0)

Page 7 of 8

REFERENCE WELLPATH IDENTIFICATION			
Operator	CONFLUENCE RESOURCES	Slot	SLOT#01 WILLOW 22-6-4L (185'FSL & 1046'FWL,SEC.22)
Area	COLORADO	Well	WILLOW 22-6-4L
Field	WELD COUNTY (NAD83, TRUE NORTH)	Wellbore	WILLOW 22-6-4L PWB
Facility	SEC.22-T01N-R65W		

TARGETS									
Name	MD [ft]	TVD [ft]	North [ft]	East [ft]	Grid East [US ft]	Grid North [US ft]	Latitude	Longitude	Shape
HARDLINES SEC.10,15,22-T01N-R65W 460'N/S&E/W		0.00	0.00	0.00	3236383.46	1254962.14	40°01'48.612"N	104°39'21.060"W	polygon
SEC.10-T01N-R65W		0.00	0.00	0.00	3236383.46	1254962.14	40°01'48.612"N	104°39'21.060"W	polygon
SEC.15-T01N-R65W		0.00	0.00	0.00	3236383.46	1254962.14	40°01'48.612"N	104°39'21.060"W	polygon
SEC.22-T01N-R65W		0.00	0.00	0.00	3236383.46	1254962.14	40°01'48.612"N	104°39'21.060"W	polygon
WILLOW 22-6-4L BHL ON PLAT (2181'FSL & 470'FWL,SEC.10)		7472.00	12588.33	-562.75	3235700.93	1267544.07	40°03'53.013"N	104°39'28.298"W	point
2) WILLOW 22-6-4L BHL REV-2 (2181'FSL & 550'FWL,SEC.10)	20165.04	7472.00	12589.85	-481.42	3235782.23	1267546.36	40°03'53.028"N	104°39'27.252"W	point
WILLOW 22-6-4L LP ON PLAT (470'FSL & 470'FWL,SEC.22)		7472.00	287.79	-576.88	3235803.89	1255244.42	40°01'51.456"N	104°39'28.476"W	point
1) WILLOW 22-6-4L LP REV-2 (470'FSL & 550'FWL,SEC.22)	7862.98	7472.00	287.79	-495.67	3235885.10	1255245.19	40°01'51.456"N	104°39'27.432"W	point

SURVEY PROGRAM - Ref Wellbore: WILLOW 22-6-4L PWB Ref Wellpath: WILLOW 22-6-4L PWP (REV-B.0)				
Start MD [ft]	End MD [ft]	Positional Uncertainty Model	Log Name/Comment	Wellbore
17.00	1500.00	BHI NaviTrak (Rotating+Axial Corr)		WILLOW 22-6-4L PWB
1500.00	20165.04	BHI AutoTrak Curve (Axial Corr, Short spacing)		WILLOW 22-6-4L PWB



# Planned Wellpath Report

WILLOW 22-6-4L PWP (REV-B.0)

Page 8 of 8

REFERENCE WELLPATH IDENTIFICATION			
Operator	CONFLUENCE RESOURCES	Slot	SLOT#01 WILLOW 22-6-4L (185'FSL & 1046'FWL, SEC.22)
Area	COLORADO	Well	WILLOW 22-6-4L
Field	WELD COUNTY (NAD83, TRUE NORTH)	Wellbore	WILLOW 22-6-4L PWB
Facility	SEC.22-T01N-R65W		

DESIGN COMMENTS				
MD [ft]	Inclination [°]	Azimuth [°]	TVD [ft]	Comment
17.00	0.000	232.156	17.00	Tie On
500.00	0.000	232.156	500.00	End of Tangent
762.54	5.251	232.156	762.17	End of Build
6827.16	5.251	232.156	6801.34	End of Tangent
7862.98	90.000	0.066	7472.00	End of 3D Arc
20165.04	90.000	0.066	7472.00	End of Tangent