

CATAMOUNT ENERGY PARTNERS: EBC #2

SURFACE LOCATION: 947' FNL & 1519' FWL

SECTION 28, T-34-N, R-5-W, S.U.L., N.M.P.M., ARCHULETA COUNTY, COLORADO. GROUND LEVEL ELEVATION: 6930.6'

PILOT HOLE BOTTOM HOLE LOCATION: 856' FSL, 253' FWL

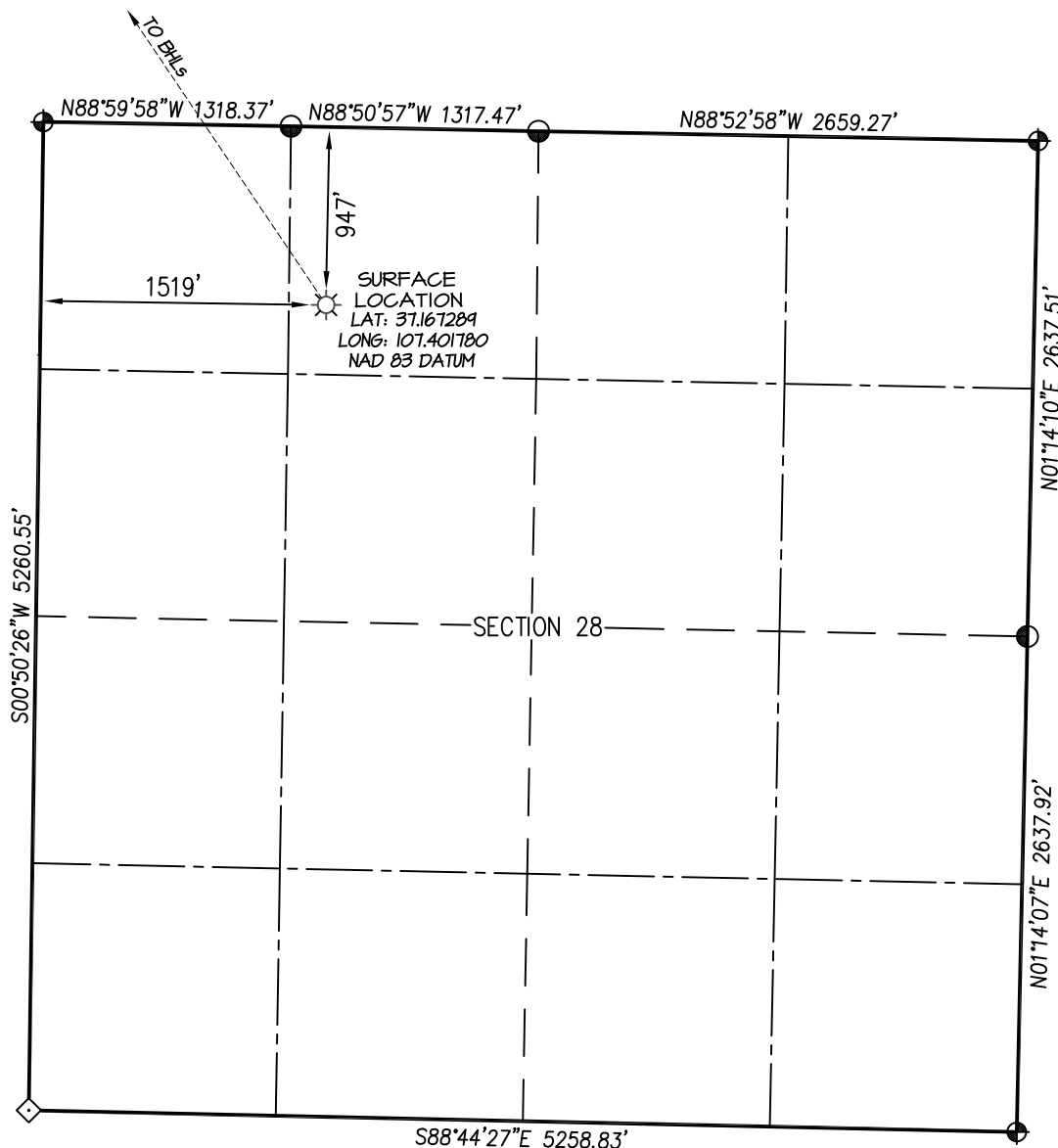
SECTION 21, T-34-N, R-5-W, S.U.L., N.M.P.M., ARCHULETA COUNTY, COLORADO.

LATERAL #1 BOTTOM HOLE LOCATION: 1910' FNL, 2605' FWL

SECTION 19, T-34-N, R-5-W, S.U.L., N.M.P.M., ARCHULETA COUNTY, COLORADO.

LATERAL #1 ST1 BOTTOM HOLE LOCATION: 660' FNL, 1355' FEL

SECTION 19, T-34-N, R-5-W, S.U.L., N.M.P.M., ARCHULETA COUNTY, COLORADO.



- ⊕ and ⊙ denote found 3-1/4" B.L.M. aluminum cap.
- ◇ denotes single proportion calculated position

NOTE:

SEE SHEET 5 OF 5 FOR COORDINATE TABLE,
SURVEY NOTES, AND SURVEYOR'S CERTIFICATE.

SHEET 1 OF 5

| | | | |
|-------------------|--------------------|--|--|
| DRAWN BY: K.R. | SURVEYED: 11/16/18 | PREPARED FOR: | |
| | | CATAMOUNT ENERGY PARTNERS | |
| CHECKED BY: K.R. | DRAWN: 1/12/19 | NORTHSTAR SURVEYING & MAPPING, INC. 768 County Rd. 308 DURANGO, CO. 81303 (970) 385-0851 | |
| FILE NO.: CEP44WP | JOB NO.: CEP44 | | |

CATAMOUNT ENERGY PARTNERS: EBC #2

SURFACE LOCATION: 947' FNL & 1519' FWL

SECTION 28, T-34-N, R-5-W, S.U.L., N.M.P.M., ARCHULETA COUNTY, COLORADO. GROUND LEVEL ELEVATION: 6930.6'

PILOT HOLE BOTTOM HOLE LOCATION: 856' FSL, 253' FWL

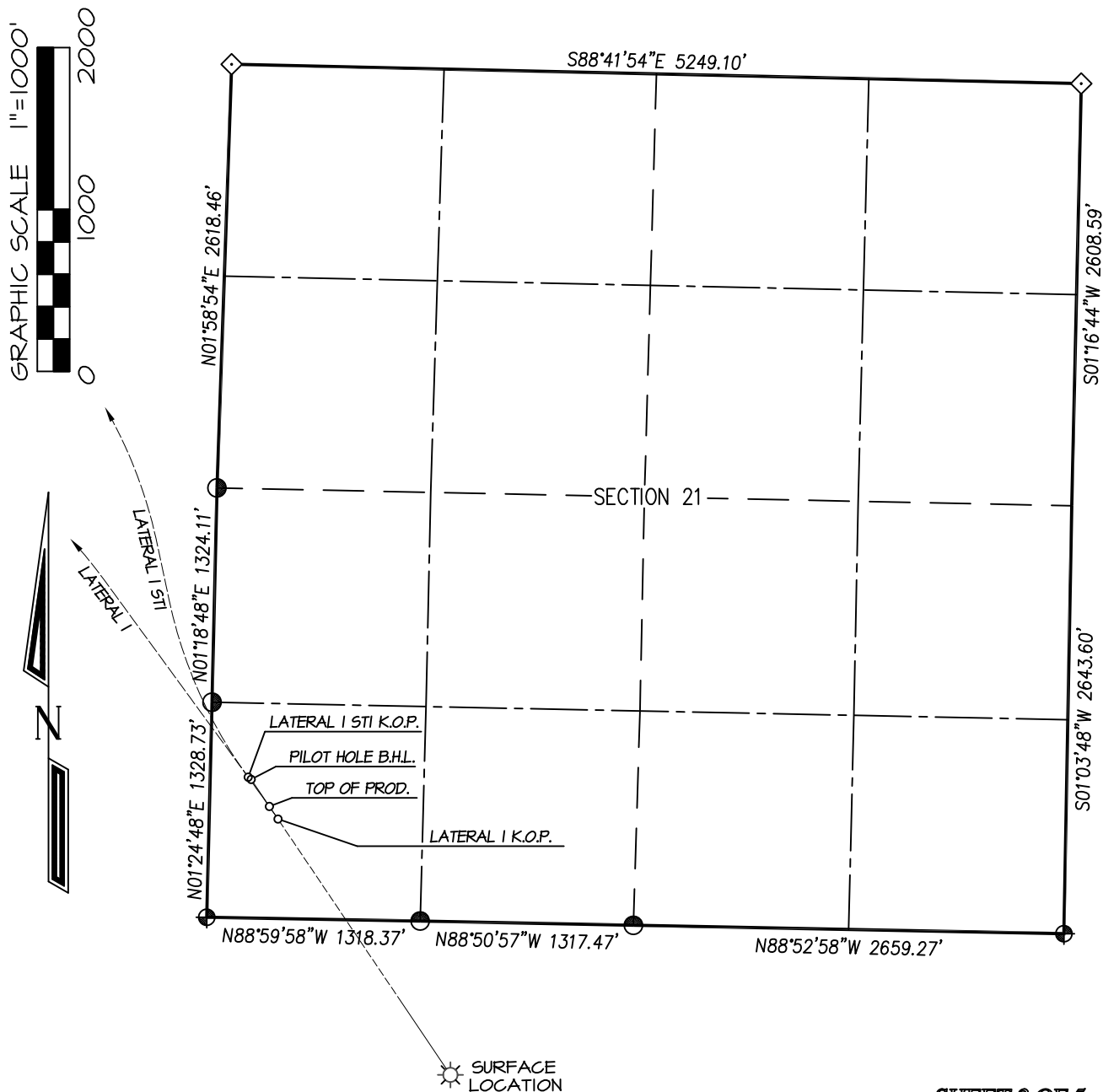
SECTION 21, T-34-N, R-5-W, S.U.L., N.M.P.M., ARCHULETA COUNTY, COLORADO.

LATERAL #1 BOTTOM HOLE LOCATION: 1910' FNL, 2605' FWL

SECTION 19, T-34-N, R-5-W, S.U.L., N.M.P.M., ARCHULETA COUNTY, COLORADO.

LATERAL #1 ST1 BOTTOM HOLE LOCATION: 660' FNL, 1355' FEL

SECTION 19, T-34-N, R-5-W, S.U.L., N.M.P.M., ARCHULETA COUNTY, COLORADO.



- ⊕ and ⊙ denote found 3-1/4" B.L.M. aluminum cap.
◇ denotes single proportion calculated position

NOTE:

SEE SHEET 5 OF 5 FOR COORDINATE TABLE,
SURVEY NOTES, AND SURVEYOR'S CERTIFICATE.

SHEET 2 OF 5

PREPARED FOR:

CATAMOUNT ENERGY PARTNERS

**NORTHSTAR
SURVEYING & MAPPING, INC.**

768 County Rd. 308
DURANGO, CO. 81303
(970) 385-0851

DRAWN BY: K.R. SURVEYED: 11/16/18
CHECKED BY: K.R. DRAWN: 1/12/19
FILE NO.: CEP44WP JOB NO. CEP44

CATAMOUNT ENERGY PARTNERS: EBC #2

SURFACE LOCATION: 947' FNL & 1519' FWL

SECTION 28, T-34-N, R-5-W, S.U.L., N.M.P.M., ARCHULETA COUNTY, COLORADO. GROUND LEVEL ELEVATION: 6930.6'

PILOT HOLE BOTTOM HOLE LOCATION: 856' FSL, 253' FWL

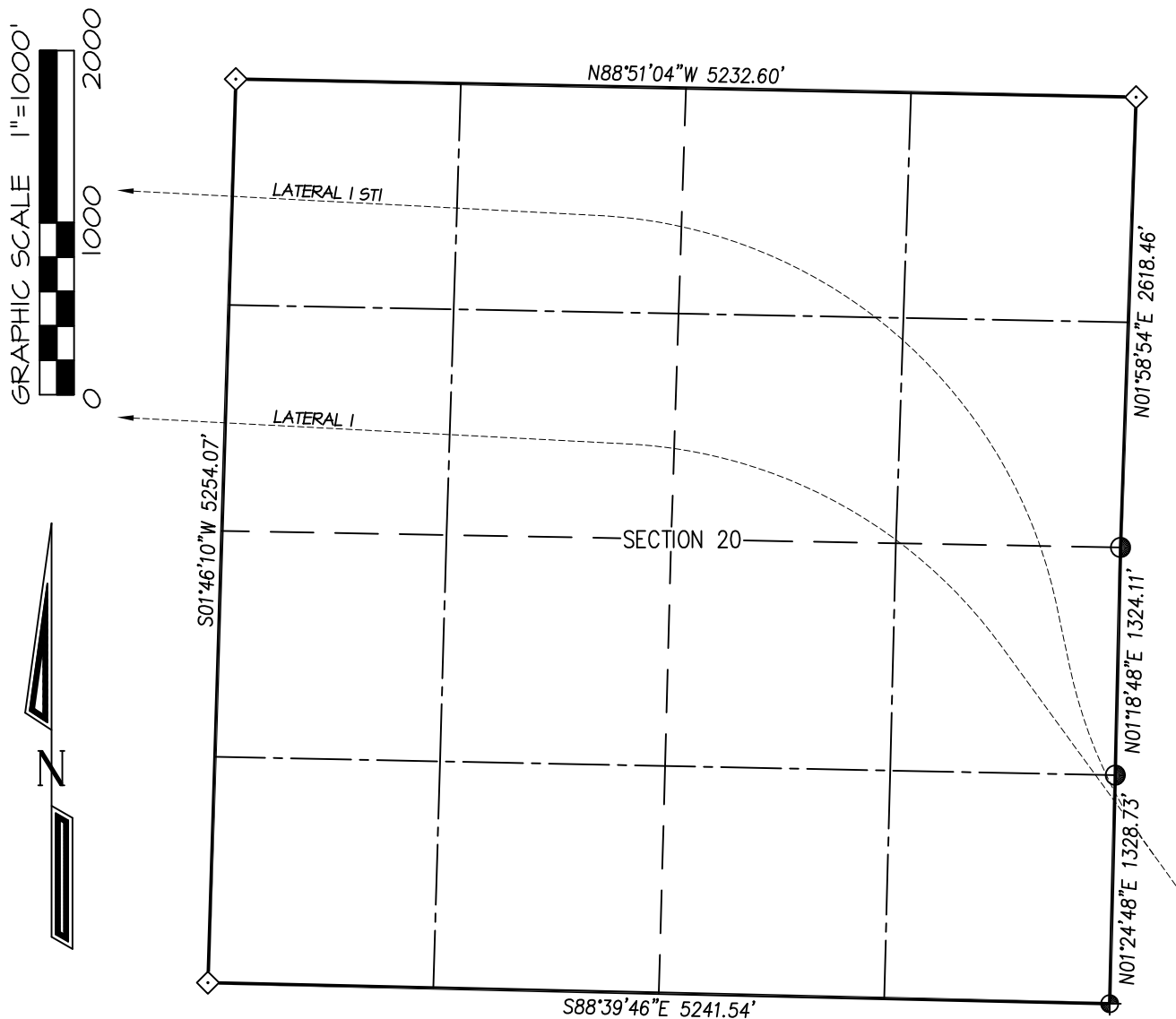
SECTION 21, T-34-N, R-5-W, S.U.L., N.M.P.M., ARCHULETA COUNTY, COLORADO.

LATERAL #1 BOTTOM HOLE LOCATION: 1910' FNL, 2605' FWL

SECTION 19, T-34-N, R-5-W, S.U.L., N.M.P.M., ARCHULETA COUNTY, COLORADO.

LATERAL #1 ST1 BOTTOM HOLE LOCATION: 660' FNL, 1355' FEL

SECTION 19, T-34-N, R-5-W, S.U.L., N.M.P.M., ARCHULETA COUNTY, COLORADO.



- ⊕ and ⊙ denote found 3-1/4" B.L.M. aluminum cap.
◇ denotes single proportion calculated position

NOTE:

SEE SHEET 5 OF 5 FOR COORDINATE TABLE,
SURVEY NOTES, AND SURVEYOR'S CERTIFICATE.

SHEET 3 OF 5

| | | |
|--|--------------------|---------------------------|
| DRAWN BY: K.R. | SURVEYED: 11/16/18 | PREPARED FOR: |
| CHECKED BY: K.R. | DRAWN: 1/12/19 | CATAMOUNT ENERGY PARTNERS |
| FILE NO.: CEP44WP | JOB NO.: CEP44 | |
| NORTHSTAR SURVEYING & MAPPING, INC. | | |
| 768 County Rd. 308 DURANGO, CO. 81303 (970) 385-0851 | | |

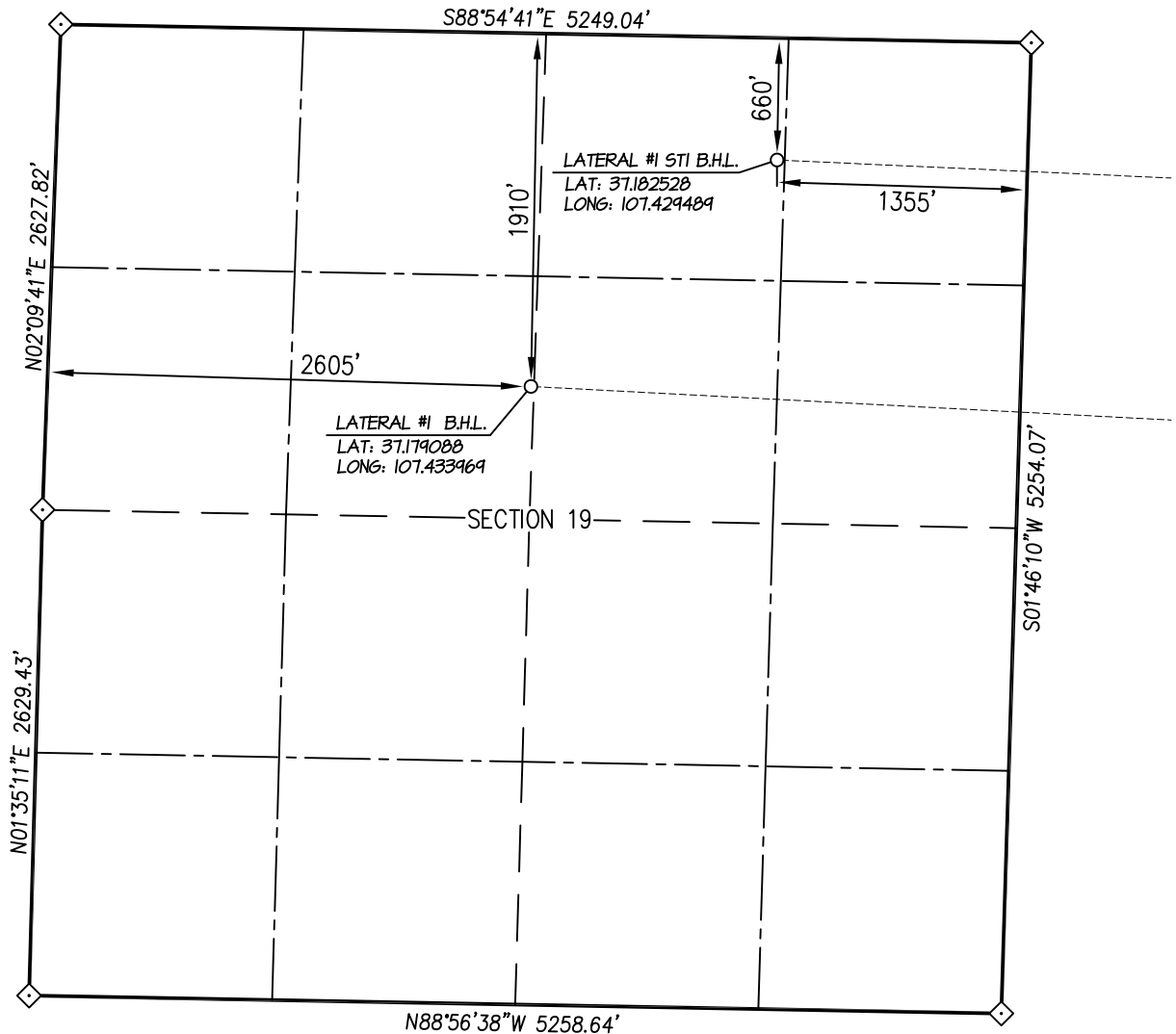
SURFACE LOCATION: 947' FNL & 1519' FWL

PILOT HOLE BOTTOM HOLE LOCATION: 856' FSL, 253' FWL

LATERAL #1 BOTTOM HOLE LOCATION: 1910' FNL, 2605' FWL

LATERAL #1 ST1 BOTTOM HOLE LOCATION: 660' FNL, 1355' FEL

SECTION 19, T-34-N, R-5-W, S.U.L., N.M.P.M., ARCHULETA COUNTY, COLORADO.



NOTE:

SEE SHEET 5 OF 5 FOR COORDINATE TABLE,
SURVEY NOTES, AND SURVEYOR'S CERTIFICATE.

SHEET 4 OF 5

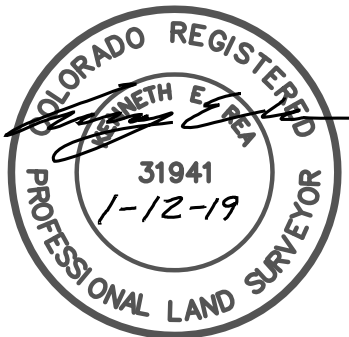
| | | | | | | |
|--|--------------------|------------------|---------|------------------|---------------|---------------------------|
| DRAWN BY: K.R. | SURVEYED: 11/16/18 | CHECKED BY: K.R. | 1/12/19 | FILE NO. CEP44WP | JOB NO. CEP44 | PREPARED FOR: |
| | | | | | | CATAMOUNT ENERGY PARTNERS |
| <p style="text-align: center;"><i>NORTHSTAR</i> SURVEYING & MAPPING, INC.</p> <p style="text-align: center;">768 County Rd. 308 DURANGO, CO. 81303 (970) 385-0851</p> | | | | | | |

CATAMOUNT ENERGY PARTNERS: EBC #2**SURFACE LOCATION: 947' FNL & 1519' FWL****SECTION 28, T-34-N, R-5-W, S.U.L., N.M.P.M., ARCHULETA COUNTY, COLORADO. GROUND LEVEL ELEVATION: 6930.6'****PILOT HOLE BOTTOM HOLE LOCATION: 856' FSL, 253' FWL****SECTION 21, T-34-N, R-5-W, S.U.L., N.M.P.M., ARCHULETA COUNTY, COLORADO.****LATERAL #1 BOTTOM HOLE LOCATION: 1910' FNL, 2605' FWL****SECTION 19, T-34-N, R-5-W, S.U.L., N.M.P.M., ARCHULETA COUNTY, COLORADO.****LATERAL #1 ST1 BOTTOM HOLE LOCATION: 660' FNL, 1355' FEL****SECTION 19, T-34-N, R-5-W, S.U.L., N.M.P.M., ARCHULETA COUNTY, COLORADO.**

| EBC 2 | CSZ NAD '83 | NAD '83 | TIES | SEC/TWP/RNG |
|---|--|--|----------------------------|-----------------------------|
| SURFACE HOLE LOCATION | N (Y) = 1,187,928.31' E (X) = 2,445,868.98' | LAT: 37.167289°N LONG: 107.401780°W | FNL = 947' FWL = 1519' | SECTION 28 T-34-N, R-5-W |
| TOP OF PRODUCTION | N (Y) = 1,189,586.31' E (X) = 2,444,750.98' | LAT: 37.171779°N LONG: 107.405732°W | FSL = 691' FWL = 370' | SECTION 21 T-34-N, R-5-W |
| PILOT HOLE - BOTTOM HOLE LOCATION | N (Y) = 1,189,753.15' E (X) = 2,444,638.47' | LAT: 37.172230°N LONG: 107.406129°W | FSL = 856' FWL = 253' | SECTION 21 T-34-N, R-5-W |
| LATERAL #1 K.O.P. | N (Y) = 1,189,508.31' E (X) = 2,444,803.98' | LAT: 37.171567°N LONG: 107.405544°W | FSL = 614' FWL = 425' | SECTION 21 T-34-N, R-5-W |
| PROPOSED BOTTOM HOLE LOCATION LATERAL #1 | N (Y) = 1,192,416.39' E (X) = 2,436,580.09' | LAT: 37.179088°N LONG: 107.433969°W | FNL = 1910' FWL = 2605' | SECTION 19 T-34-N, R-5-W |
| LATERAL #1 ST1 K.O.P. | N (Y) = 1,189,767.31' E (X) = 2,444,619.98' | LAT: 37.172268°N LONG: 107.406194°W | FSL = 870' FWL = 235' | SECTION 21 T-34-N, R-5-W |
| PROPOSED BOTTOM HOLE LOCATION LATERAL #1 ST1 | N (Y) = 1,193,641.68' E (X) = 2,437,910.76' | LAT: 37.182528°N LONG: 107.429489°W | FNL = 660' FEL = 1355' | SECTION 19 T-34-N, R-5-W |

NOTES:

1. WELL LOCATION FOOTAGE CALLS MEASURED PERPENDICULAR TO SECTION LINES.
2. WELL GPS OBSERVATION PERFORMED BY NELSON ROSS ON 11/16/18 - PDOP VALUE = 2.08
3. BEARINGS & DISTANCE SHOWN ARE FIELD MEASURED UNLESS OTHERWISE NOTED.
4. ALL MEASURED DISTANCES SHOWN ARE GRID DISTANCE WITH NO SCALE FACTOR APPLIED.
5. BEARINGS ARE BASED ON THE NORTH AMERICAN DATUM OF 1983, COLORADO SOUTH STATE PLANE COORDINATE SYSTEM, ZONE 0503.
6. ELEVATION IS BASED ON THE NORTH AMERICAN VERTICAL DATUM OF 1988 (GEOID12A).



I, KENNETH E. REA, A REGISTERED PROFESSIONAL LAND SURVEYOR IN THE STATE OF COLORADO, DO HEREBY CERTIFY THAT THE WELL LOCATION SHOWN ON THIS PLAT IS ACCURATELY PLOTTED FROM FIELD NOTES OF ACTUAL SURVEYS MADE UNDER MY DIRECT SUPERVISION, AND THAT THIS PLAT IS NOT A LAND SURVEY PLAT OR IMPROVEMENT SURVEY PLAT, AND THAT IT IS NOT TO BE RELIED UPON FOR THE ESTABLISHMENT OF FENCE, BUILDING, OR OTHER FUTURE IMPROVEMENT LINES.

SHEET 5 OF 5

| | | | | |
|--|------------------|-------------------|---------|----------------------------------|
| DRAWN BY: K.R. | CHECKED BY: K.R. | FILE NO.: CEP44WP | JOB NO. | PREPARED FOR: |
| | | | | CATAMOUNT ENERGY PARTNERS |
| NORTHSTAR SURVEYING & MAPPING, INC. 768 County Rd. 308 DURANGO, CO. 81303 (970) 385-0851 | | | | |