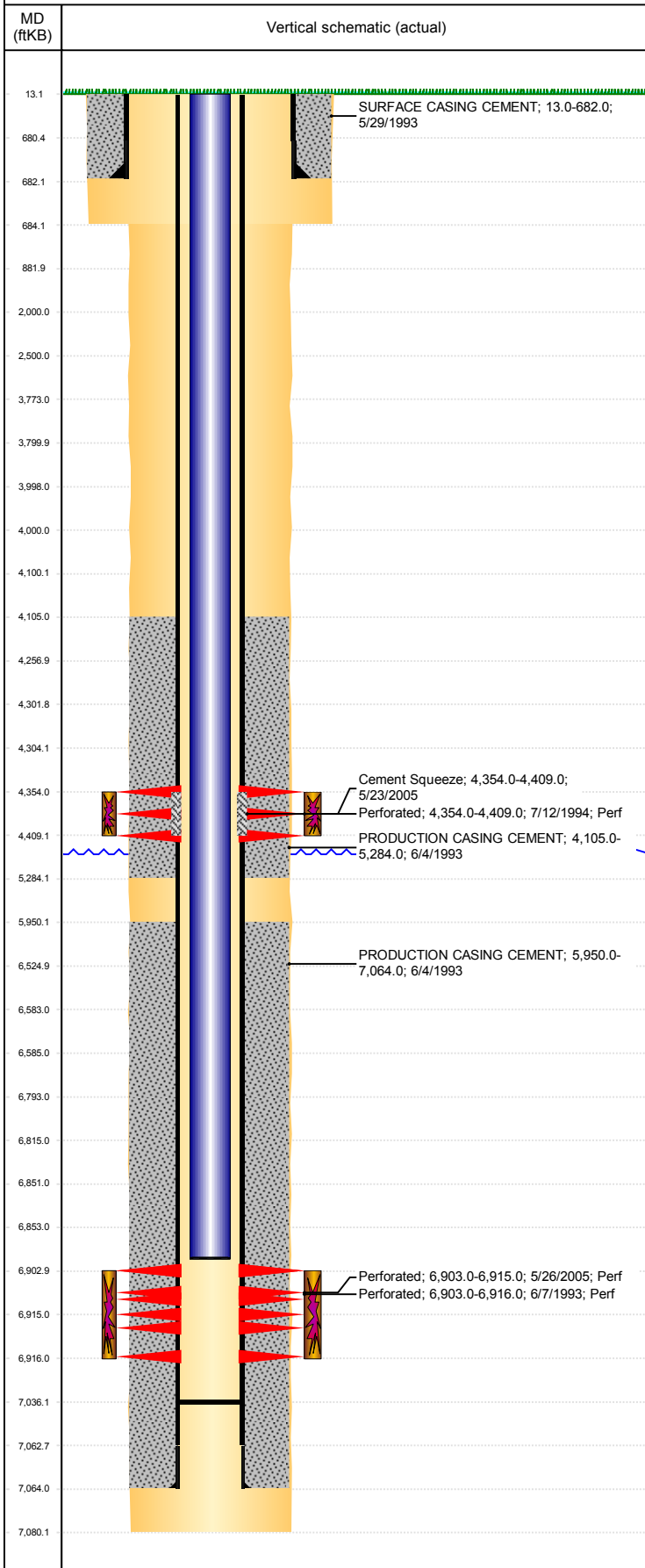


**Well Name: PARKER BLUE D23-10**

VERTICAL, ORIGINAL HOLE, 3/19/2019 7:23:18 AM



Well Header									
API 05-123-17002		Business Unit DJ BASIN			District 15		Well Config VERTICAL		
KB - GL / MSL (ft... 13.00		Spud Date 5/29/1993		P & A Date		Well Production Status SI			SoRT No
Comment									
Surface Location (Congressional)									
Qtr 3 NW	Qtr 4 SE	Section 23	Twonshp 3	Twonsh... N	Range 64	Rng E... W	Actual Latitude (°) 40.20857634	Actual Longitude (°) -104.51496194	
Wellbore Sections									
Section Des			Size (in)			Act Top, MD (ftKB)		Act Btm, MD (ftKB)	
SURFACE			12 1/4			13		684	
PRODUCTION			7 7/8			684		7,080	
Casing Strings									
Csg Des			Run Date		OD (in)	Wt/Len (lb/ft)	Grade	Top, MD (ftKB)	MD (ftKB)
Surface			5/29/1993		8 5/8	24.00		13.0	682.0
Production			6/4/1993		3 1/2	7.70	M-75	13.0	7,064.0
Cement									
Des					Start Date		Top (ftKB)		Btm (ftKB)
SURFACE CASING CEMENT					5/29/1993		13.0		682.0
PRODUCTION CASING CEMENT					6/4/1993		4,105.0		5,284.0
PRODUCTION CASING CEMENT					6/4/1993		5,950.0		7,064.0
Cement Squeeze					5/23/2005		4,354.0		4,409.0
Zone Statuses									
Zone Name	Status Date	Status	Fluid Type	Job				Prod Method	
SUSSEX	8/8/1994	PR	Gas	DRILLING/COMPLETION - ORIGINAL, 5/29/1993...				Flowing	
SUSSEX	5/20/2005	PR	Water	RE-FRAC, 5/18/2005 00:00					
CODELL	8/7/2009	PR							
CODELL	10/7/2016	SI							
Perforation Data									
Linked Zone		Bnch/Stg	Entered Shot Total	Top (ftKB)		Btm (ftKB)		Date	
SUSSEX, ORIGINAL HOLE			14	4,354.00		4,409.00		7/12/1994	
CODELL, ORIGINAL HOLE			48	6,903.00		6,915.00		5/26/2005	
CODELL, ORIGINAL HOLE			52	6,903.00		6,916.00		6/7/1993	
Stimulation Intervals									
Zone				Start Date		Top (ftKB)		Btm (ftKB)	
SUSSEX, ORIGINAL HOLE				7/18/1994		4,354.0		4,409.0	
CODELL, ORIGINAL HOLE				6/8/1993		6,903.0		6,916.0	
CODELL, ORIGINAL HOLE				6/17/2005		6,903.0		6,815.0	
Other In Hole									
Run Date		Des				OD (in)	Top (ftKB)	Btm (ftKB)	
Logs									
Date		Type					Top, MD (ftKB)		Btm, MD (ftKB)
6/4/1993		COMPENSATED DENSITY					3,800.0		7,080.0
6/4/1993		INDUCTION					3,800.0		7,080.0
6/7/1993		CBL/CCL/GR					3,980.0		7,035.0
5/22/2018		GYRO					13.0		6,800.0
Plug Back Total Depths									
Date		Type		Com				Depth (ftKB)	
6/4/1993		GUIDE SHOE						7,042.0	
9/2/2010		FILL		SLICKLINE TAGGED FILL.				7,036.0	