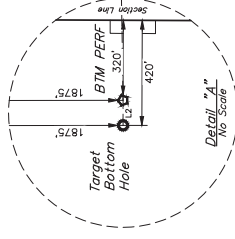


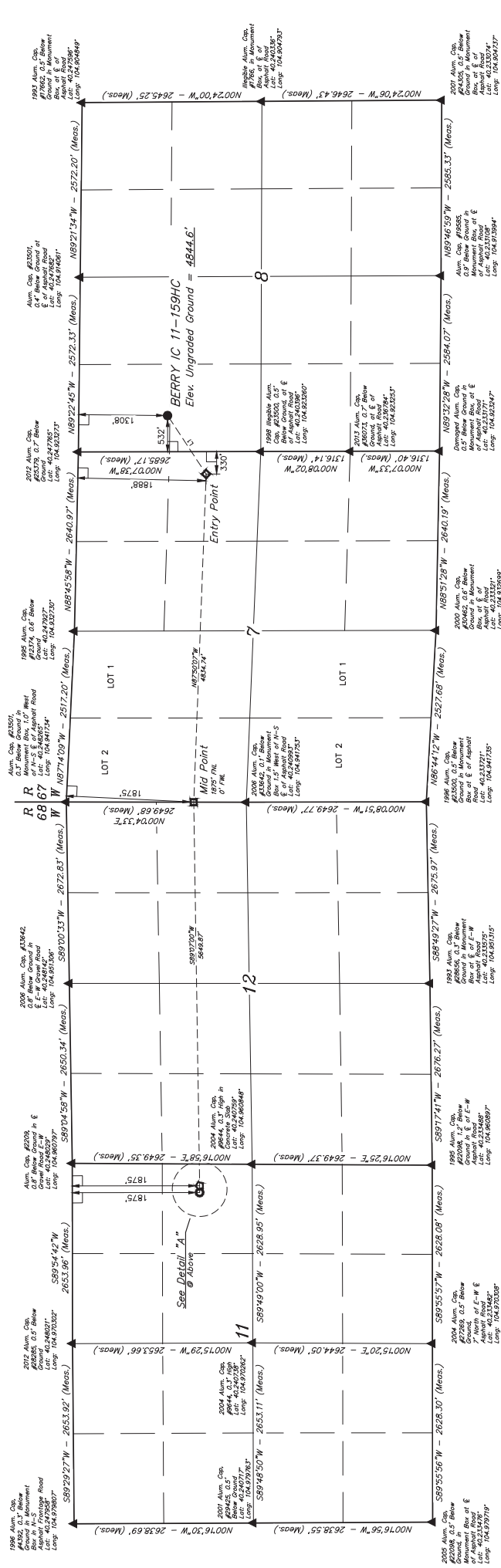
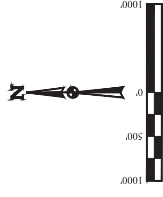
GREAT WESTERN OPERATING COMPANY
BERRY IC 11-159HC
SW 1/4 NW 1/4, SECTION 8, T3N, R67W, 6th P.M.
WELD COUNTY, COLORADO

BASIS OF BEARINGS
TRANSVERSE MERCATOR PROJECTION WITH A CENTRAL MERIDIAN OF W105°00'00".

BASIS OF ELEVATION
OPUS SOLUTION GENERATED NAVD 88



LINE TABLE		
LINE	DIRECTION	LENGTH
L1	S56°36'54"W	1031.40'
L2	S89°54'42"W	100.00'

[illegible]