



BOREHOLE PROFILE LOG

FILE NO: OH145636	COMPANY LARAMIE ENERGY LLC	
API NO: 05077105820000	WELL SUP & SHEP FEDERAL 0993-25-14W	
	FIELD BUZZARD CREEK	
	COUNTY MESA STATE COLORADO	
Version RIG: H&P 522	LOCATION: LAT: 39.244799 N LONG: 107.723413 W SEC <u>25</u> TWP <u>9S</u> RGE <u>93W</u>	OTHER SERVICES NONE
PERMANENT DATUM LOG MEASURED FROM DRILL. MEAS. FROM	GL ELEVATION 8078 FT KB 30 FT ABOVE P.D. KB	ELEVATIONS: KB 8108 FT DF GL 8078 FT

DATE	20-NOV-2018	
RUN	TRIP	1
SERVICE ORDER	US145636	
DEPTH DRILLER	1563 FT	
DEPTH LOGGER	1440 FT	
BOTTOM LOGGED INTERVAL	1440 FT	
TOP LOGGED INTERVAL	0 FT	
CASING DRILLER	16 IN @ 90 FT	
CASING LOGGER	90 FT	
BIT SIZE	11 IN	
TYPE OF FLUID IN HOLE	WBM	
DENSITY	VISCOSITY	60 CP
PH	FLUID LOSS	14 C3
SOURCE OF SAMPLE	TOOL MEASURED	
RM AT MEAS. TEMP.	2.71 OHMM @ 82.93 DEGF	
RMF AT MEAS. TEMP.	2.08 OHMM @ 82.93 DEGF	
RMC AT MEAS. TEMP.	3.33 OHMM @ 82.93 DEGF	
SOURCE OF RMF	RMC	CALCULATED
RM AT BHT	2.86 OHMM @ 85.12 DEGF	
TIME SINCE CIRCULATION	5 HOURS	
MAX. RECORDED TEMP.	85.12 DEGF	
EQUIP. NO.	LOCATION	ML-4268 GRAND JCT.
RECORDED BY	TIM NEWELL	
WITNESSED BY	TYLER HALE	

IN MAKING INTERPRETATIONS OF LOGS OUR EMPLOYEES WILL GIVE THE CUSTOMER THE BENEFIT OF THEIR BEST JUDGEMENT. BUT SINCE ALL INTERPRETATIONS ARE OPINIONS BASED ON INFERENCES FROM ELECTRICAL OR OTHER MEASUREMENTS, WE CANNOT, AND WE DO NOT GUARANTEE THE ACCURACY OR CORRECTNESS OF ANY INTERPRETATION. WE SHALL NOT BE LIABLE OR RESPONSIBLE FOR ANY LOSS, COST, DAMAGES, OR EXPENSES WHATSOEVER INCURRED OR SUSTAINED BY THE CUSTOMER RESULTING FROM ANY INTERPRETATION MADE BY ANY OF OUR EMPLOYEES.

EQUIPMENT DATA					
RUN	TRIP	TOOL	SERIES NO.	SERIAL NO.	POSITION
1	1	TTRM	3981XA	10435924	FREE
1	1	COMM REMOTE	3514XB	10435562	FREE
1	1	GR	1329XB	10378541	FREE
1	1	CN	2446XA	10560252	DECENTRALIZED
1	1	ZDL	2234XA	10460300	PAD DEVICE
1	1	KNUCKLE	3939XA	12081598	FREE
1	1	HDIL EA	1515EA	10037710	FREE
1	1	HDIL	1515MA	11831570	FREE

BOREHOLE PROFILE

Plotted: Wed Nov 21 11:13:51 2018

PARAMETER AND FILTER SUMMARY REPORT					
FILE: C:\dat1a\Laramie_OH\p870b04.prm LOGGING MODE: DEPTH DIRECTION: UP TOP DEPTH: 813.933 ft BOTTOM DEPTH: 1446.015 ft					
SYMMETRIC FILTER					
MEASUREMENT TYPE	PARAMETER	VALUE	UNITS	INTERVAL (ft)	
Y AXIS CALIPER	FILTER ()	medium (1)		TOP	BOTTOM
TENSION	FILTER ()	medium (1)		"	"
GR	FILTER ()	medium (1)		"	"
CALIPER	FILTER ()	medium (1)		"	"
	FILTER (.h)	medium (1)		"	"
	FILTER (.i)	medium (1)		"	"
SP-SPDH	FILTER ()	medium (1)		"	"
BOREHOLE & CEMENT					
MEASUREMENT TYPE	PARAMETER	VALUE	UNITS	INTERVAL (ft)	
CASING - BOREHOLE & CEMENT VOLUME	CASING O.D.	8.625	in	TOP	BOTTOM
BIT SIZE	BIT SIZE	11.000	in	"	"

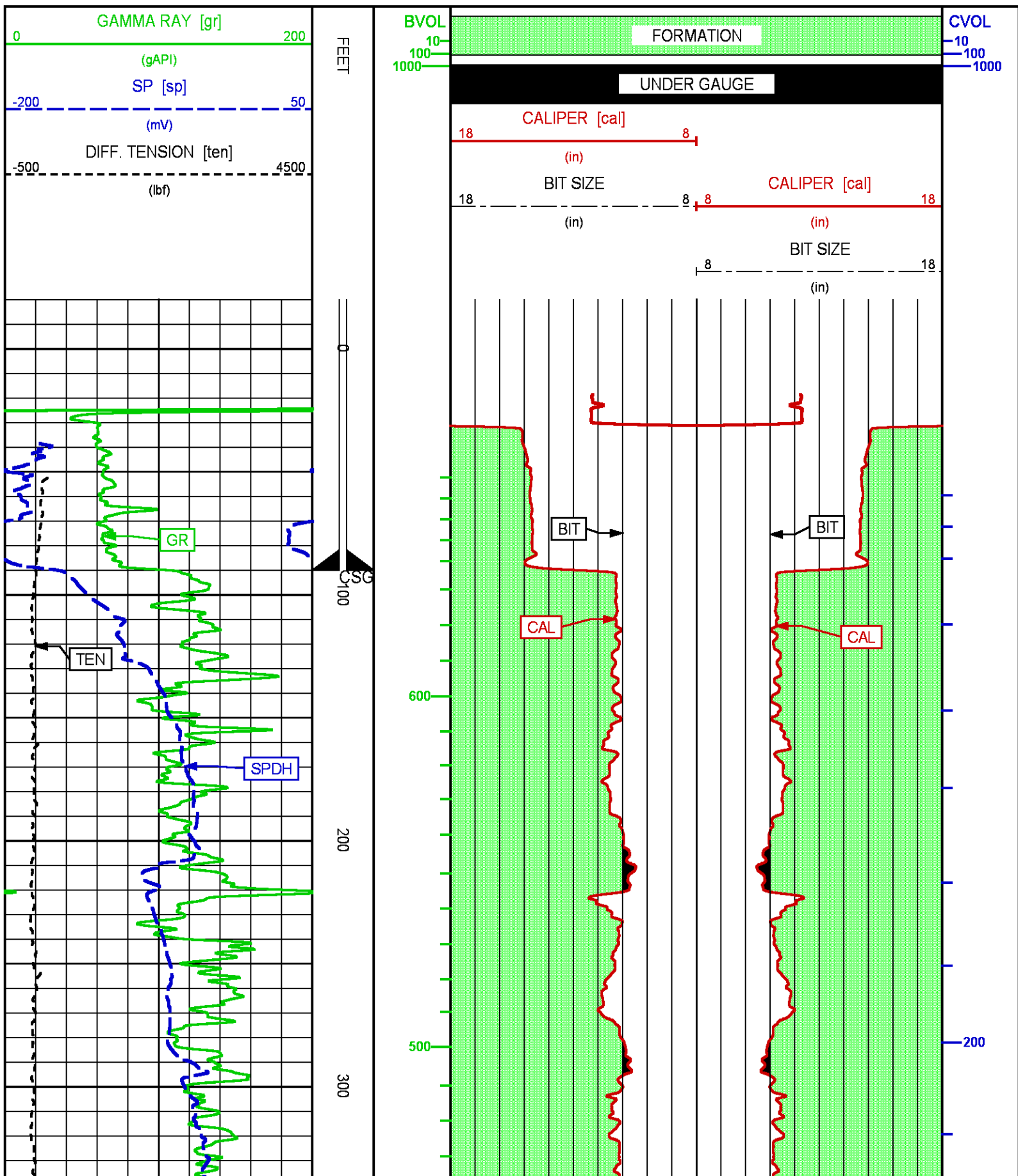
PARAMETER AND FILTER SUMMARY REPORT					
FILE: C:\dat1a\Laramie_OH\p870bR02.prm LOGGING MODE: DEPTH DIRECTION: UP TOP DEPTH: 51.240 ft BOTTOM DEPTH: 1034.354 ft					
SYMMETRIC FILTER					
MEASUREMENT TYPE	PARAMETER	VALUE	UNITS	INTERVAL (ft)	
Y AXIS CALIPER	FILTER ()	medium (1)		TOP	BOTTOM
TENSION	FILTER ()	medium (1)		"	"
GR	FILTER ()	medium (1)		"	"
CALIPER	FILTER ()	medium (1)		"	"
	FILTER (.h)	medium (1)		"	"
	FILTER (.i)	medium (1)		"	"
SP-SPDH	FILTER ()	medium (1)		"	"
BOREHOLE & CEMENT					
MEASUREMENT TYPE	PARAMETER	VALUE	UNITS	INTERVAL (ft)	
CASING - BOREHOLE & CEMENT VOLUME	CASING O.D.	8.625	in	TOP	BOTTOM
BIT SIZE	BIT SIZE	11.000	in	"	"

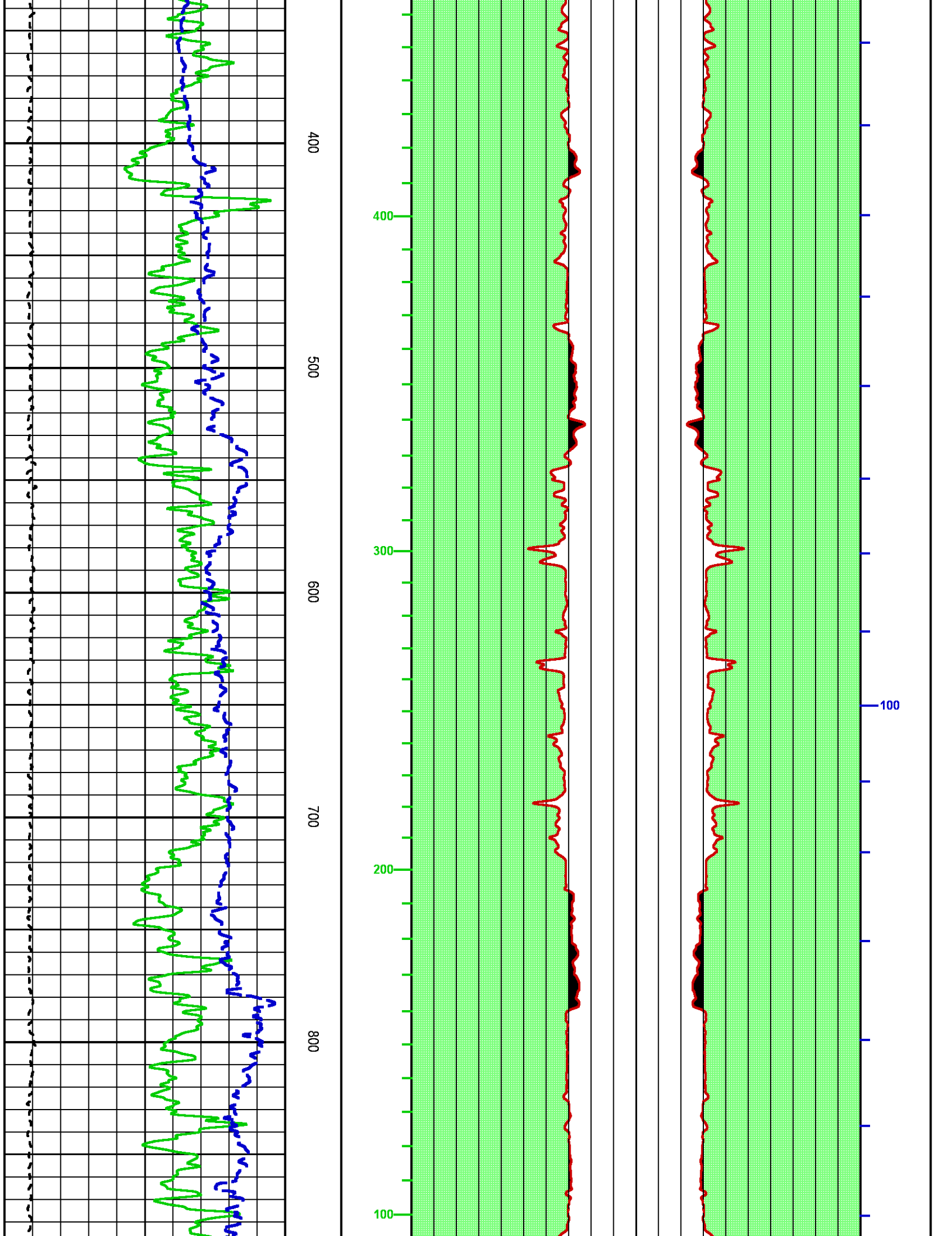
CURVE DESCRIPTION REPORT		
CURVE NAME	CREATION DATE	CURVE DESCRIPTION
F1:BIT	Nov 21 00:26:10 2018	BIT SIZE
F1:BVOL	Nov 21 00:26:10 2018	BOREHOLE VOLUME
F1:CAL	Nov 21 00:26:10 2018	CALIPER
F1:CVOL	Nov 21 00:26:10 2018	CEMENT VOLUME
F1:GR	Nov 21 00:26:10 2018	GAMMA RAY
F1:SP	Nov 21 00:26:10 2018	SPONTANEOUS POTENTIAL
F1:TEN	Nov 21 00:26:10 2018	DIFFERENTIAL TENSION

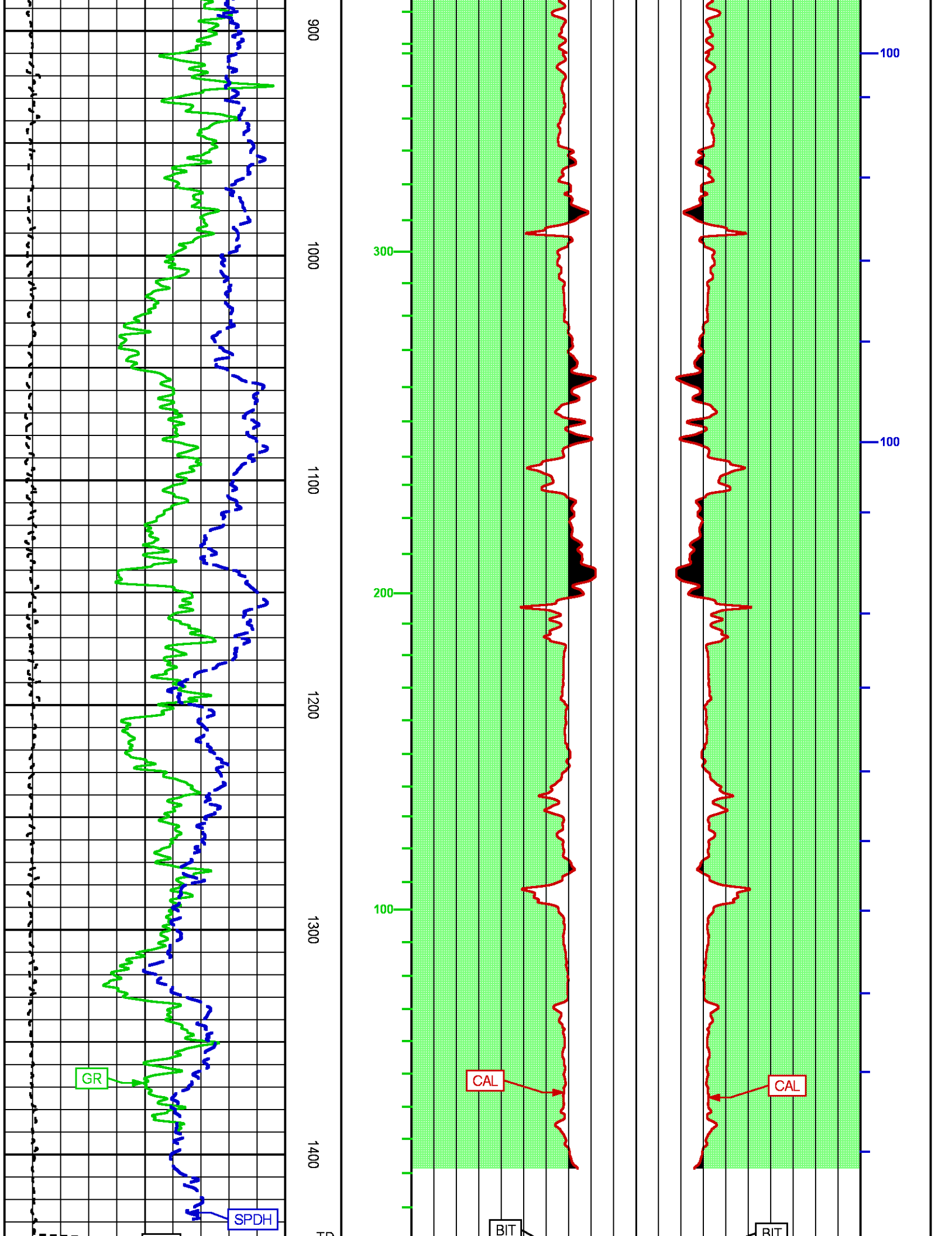
CURVE MEASURE POINT OFFSET							
CURVE	OFFSET (ft)	CURVE	OFFSET (ft)	CURVE	OFFSET (ft)	CURVE	OFFSET (ft)
BIT	0.00	GR	-52.25	TEN	0.00		
CAL	-35.00	SP	-14.00				

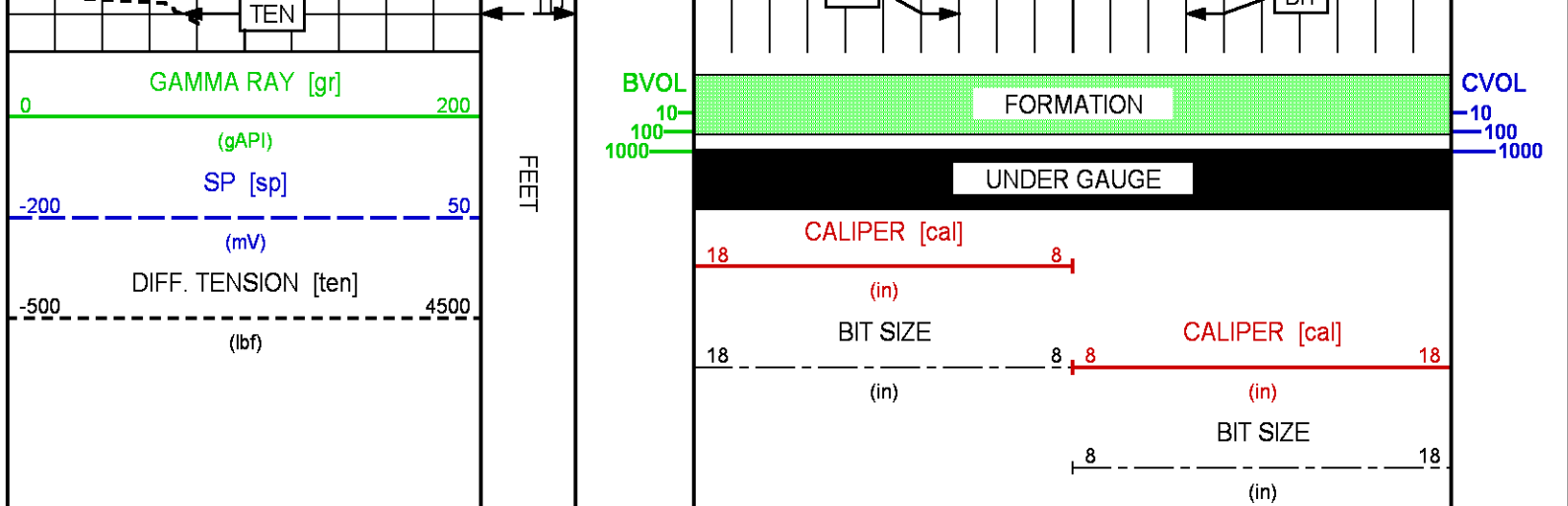
Presentation : BHIF8XRZF2:C:\dat1a\Laramie_OH\MAINSPICE.txt
Plot Interval : -13.75 - 1444.25 Feet

Data File 1 : F1 : BHIF8XRZF2:C:\dat1a\Laramie_OH\MAINSPICE.txt
Created On : Nov 21 00:26:10 2018
Company : LARAMIE ENERGY LLC
Well : SUP & SHEP FEDERAL 0993-25-14W
Field : BUZZARD CREEK
File Interval : -13.75 - 1444.25 Feet
OCT : p870b









CALIBRATION / VERIFICATION SUMMARY

Source File: C:\dat1a\Laramie_OH\p870b.tp1

GR PRIMARY CALIBRATION SUMMARY

TOOL #: 1329XB 10378541

DATE/TIME PERFORMED: Sat Nov 17 17:41:09 2018

UNIT #: 5753XD 10412898

CALB JIG #: 4702NK BA-869

	BACKGROUND (cts/s)	CALBTR ON (cts/s)	CR DIFF (cts/s)	MULT	BACKGROUND (gAPI)	CALBTR ON (gAPI)	CALBTR (gAPI)
GR	626.33	1502.31	876.0 830.0 960.0	0.171	107.25	257.25	150

GR PRIMARY VERIFICATION SUMMARY

TOOL #: 1329XB 10378541

DATE/TIME PERFORMED: Sat Nov 17 17:45:25 2018

UNIT #: 5753XD 10412898

VERI JIG #: 4702NK BA-869

	BACKGROUND (cts/s)	CALBTR ON (cts/s)	MULT	BACKGROUND (gAPI)	CALBTR ON (gAPI)	DIFF. (gAPI)
GR	630.89	1519.56	0.171	108.03	260.20	152.17 140.00 160.00

GR BEFORE LOG VERIFICATION SUMMARY

TOOL #: 1329XB 10378541

DATE/TIME PERFORMED: Tue Nov 20 21:26:00 2018

DAYS SINCE CAL: 3

UNIT #: 5753XD 10412898

VERI JIG #: 4702NK BA-869

	BACKGROUND (cts/s)	CALBRTR ON (cts/s)	MULT	BACKGROUND (gAPI)	CALBRTR ON (gAPI)	DIFF. (gAPI)
GR	144.22	1041.24	0.171	24.70	178.30	153.60
						142.17 162.17

GR AFTER LOG VERIFICATION SUMMARY

TOOL #: 1329XB 10378541 DATE/TIME PERFORMED: Wed Nov 21 06:01:39 2018 DAYS SINCE CAL: 3

UNIT #: 5753XD 10412898 VERI JIG #: 4702NK BA-869

	BACKGROUND (cts/s)	CALBRTR ON (cts/s)	MULT	BACKGROUND (gAPI)	CALBRTR ON (gAPI)	DIFF. (gAPI)
GR	136.36	1019.51	0.171	23.35	174.58	151.23
						143.60 163.60

CAL PRIMARY CALIBRATION SUMMARY

TOOL #: 2234XA 10460300 DATE/TIME PERFORMED: Sun Nov 18 10:58:36 2018

UNIT #: 5753XD 10412898

	SMALL RING	LARGE RING	MULT	ADD	SMALL RING (in)	LARGE RING (in)
CALIPER	2050.8	2619.2	0.00792	-8.48610	7.750	12.250

CAL BEFORE LOG VERIFICATION SUMMARY

TOOL #: 2234XA 10460300 DATE/TIME PERFORMED: Tue Nov 20 22:01:08 2018 DAYS SINCE CAL: 2

UNIT #: 5753XD 10412898

	I.D.	MULT	ADD	I.D. (in)
CALIPER	3053.2	0.00792	-8.92206	15.250

CAL AFTER LOG VERIFICATION SUMMARY

TOOL #: 2234XA 10460300 DATE/TIME PERFORMED: Wed Nov 21 06:03:36 2018 DAYS SINCE CAL: 2

UNIT #: 5753XD 10412898

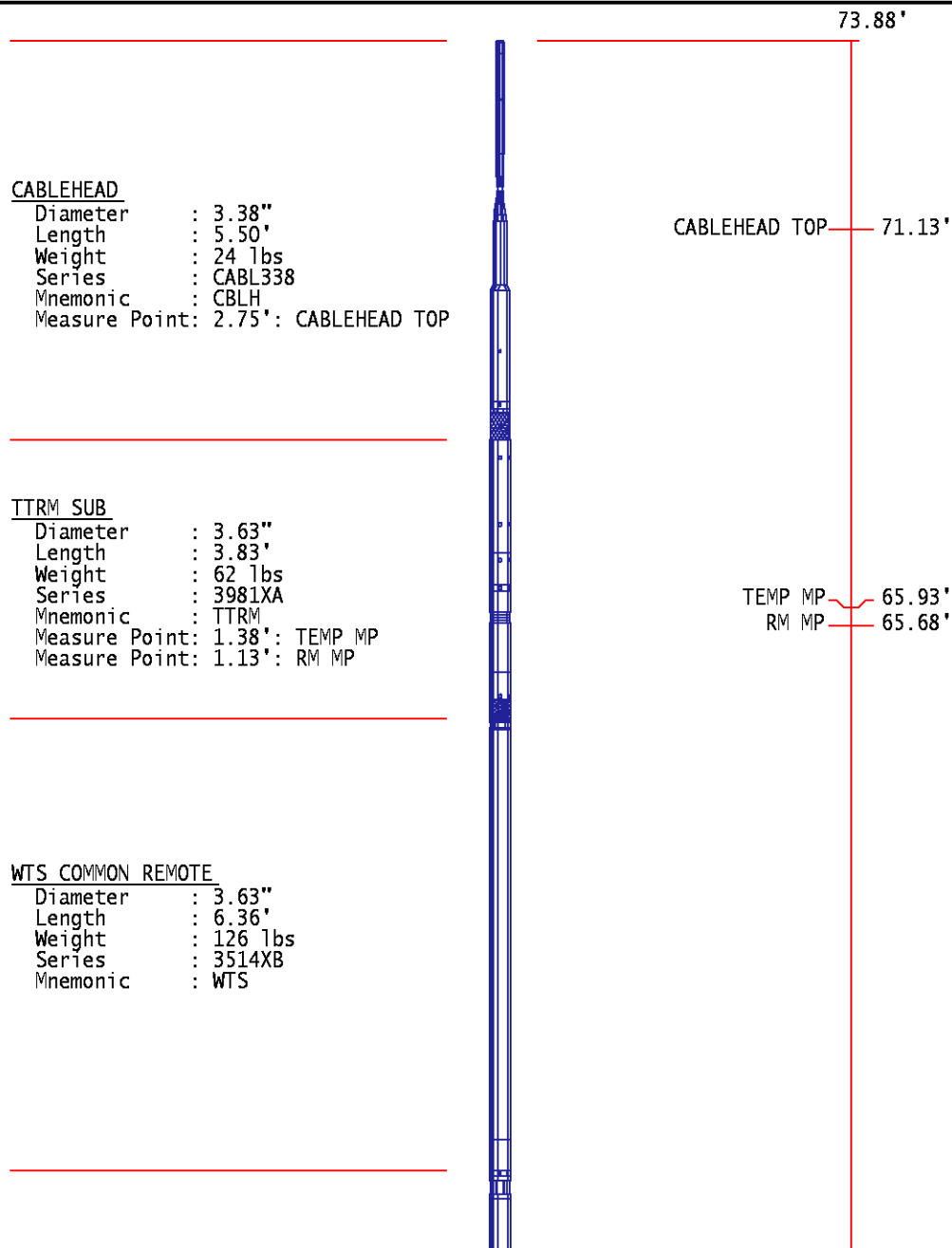
	I.D.	MULT	ADD	I.D. (in)
CALIPER	3040.8	0.00792	-8.92206	15.152
				14.750 15.750

INSTRUMENT CONFIGURATION

Source File: C:\dat1a\Laramie_OHMSLAM-tdg.meta

INSTRUMENT CONFIGURATION

Source File: /dat1a/LARAMIE_SS_FED_0993_25_14W/MSLAM-tdg



DIGITAL SPECTRALOG

Diameter : 3.63"
Length : 7.31'
Weight : 130 lbs
Series : 1329XB
Mnemonic : DSL
Measure Point: 1.60': GR MP

GR MP — 52.48'

COMPENSATED NEUTRON

Diameter : 3.63"
Length : 7.59'
Weight : 150 lbs
Series : 2446XA
Mnemonic : CN
Measure Point: 2.63': LSN MP
Measure Point: 2.24': SSN MP

LSN MP — 45.92'

SSN MP — 45.52'

Z-DENSILOG

Diameter : 4.88"
Length : 11.22'
Weight : 360 lbs
Series : 2234XA
Mnemonic : ZDL
Measure Point: 3.19': CAL MP
Measure Point: 2.47': LSD MP
Measure Point: 2.07': SSD MP

CAL MP — 35.26'

LSD MP — 34.54'

SSD MP — 34.14'

KNUCKLE JOINT (DOUBLE)

Diameter : 3.38"
Length : 4.65'

Length : 7.03'
Weight : 90 lbs
Series : 3939XA
Mnemonic : KNJT

HIGH DEFINITION INDUCTION TOOL

Diameter : 3.62"
Length : 27.13'
Weight : 415 lbs
Series : 1515XA
Mnemonic : HDIL
Measure Point: 13.91': SP MP
Measure Point: 7.44': XMTR MP

SP MP — 14.19'

XMTR MP — 7.72'

BULL PLUG 3 3/8

0.00'

TOTAL LENGTH: 73.88'
TOTAL WEIGHT: 1374 lbs
MAX DIAMETER: 0'4.88"

**BAKER
HUGHES**
a GE company



ECLIPS

COMPANY
WELL
FIELD
COUNTY

LARAMIE ENERGY LLC
SUP & SHEP FEDERAL 0993-25-14W
BUZZARD CREEK
MESA **STATE** COLORADO

FILE NO:
OH145636
API NO:
05077105820000

LOCATION:

LAT: 39.244799 N
LONG: 107.723413 W

SEC 25 **TWP** 9S **RGE** 93W

ELEVATIONS:

KB 8108 FT
DF
GL 8078 FT

DATE 20-NOV-2018

RIG: H&P 522

