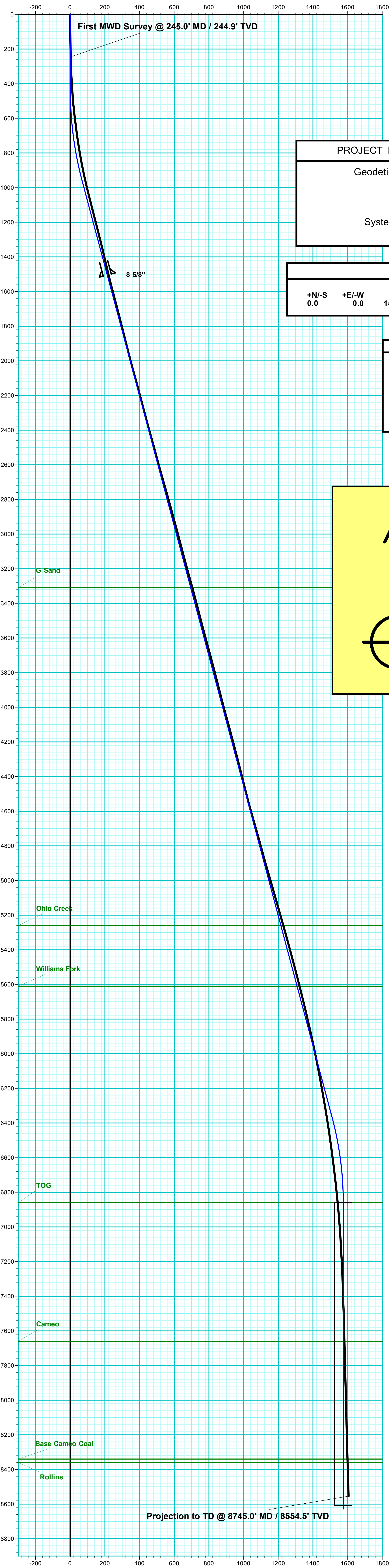


Company Name: Laramie Energy, LLC
Sup & Shep Federal 0993-25-14W
Mesa County, CO
Rig: H&P #522
Created By: Will Jircik
Date: 11/26/2018

Sup & Shep Federal 0993-25-14W
Mesa County, CO
Q181551 & RM-181306
Design #2

DESIGN ANNOTATIONS								
MD	Inc	Azi	TVD	+N/-S	+E/-W	VSect	Departure	Annotation
400.0	0.00	0.00	400.0	0.0	0.0	0.0	0.0	KOP (Build 3° / 100')
566.7	5.00	200.00	566.5	-6.8	-2.5	5.0	7.3	EOB @ 5.00° Inc. / 200.00° Azm
968.9	14.93	246.90	962.6	-43.8	-56.4	69.2	74.0	EOB @ 14.93° Inc. / 246.89° Azm
6563.1	14.93	246.90	6367.9	-609.4	-1382.2	1510.6	1515.5	Drop 3° / 100'
7060.8	0.00	0.00	6860.0	-634.8	-1441.6	1575.1	1580.0	EOD @ Vertical
8810.8	0.00	0.00	8610.0	-634.8	-1441.6	1575.1	1580.0	TD @ 8810.8' MD / 8610.0' TVD

DESIGN TARGET DETAILS								
Name	TVD	+N/-S	+E/-W	Northing	Easting	Latitude	Longitude	Shape
PBHL - SUP & SHEP FEDERAL 25-14W	8610.0	-634.8	-1441.6	1521158.46	2368918.73	39.243056	-107.728503	Circle (Radius: 50.0)



PROJECT DETAILS:		Mesa County, CO
Geodetic System:	US State Plane 1983	
Datum:	North American Datum 1983	
Ellipsoid:	GRS 1980	
Zone:	Colorado Central Zone	
System Datum:	Mean Sea Level	

WELL DETAILS: Sup & Shep Federal 0993-25-14W					
		GL: 8078.0			
+N/-S	+E/-W	Northing	Easting	Latitude	Longitude
0.0	0.0	1521757.75	2370375.39	39.244799	-107.723413

FORMATION TOP DETAILS		
TVDPATH	MDPATH	FORMATION
3310.0	3398.3	G Sand
5260.0	5416.5	Ohio Creek
5610.0	5778.7	Williams Fork
6860.0	7060.8	TOG
7660.0	7860.8	Cameo
8340.0	8540.8	Base Cameo Coal
8360.0	8560.8	Rollins

T

M

Azimuths to True North

Magnetic North: 9.34°

Strength: 51244.0snT

Dip Angle: 65.37°

Date: 11/2/2018

Model: USER DEFINED

