

Gamma Ray C C L
Cement Bond Log
V D L

Company	Noble Energy
Well	Kori J 19-25
Field	Wattenberg
County	Weld
State	Colo
Location:	Sec 19 Twp 5N Rge 66W
1319 FSL 1387 FWL SE SW	
Permanent Datum	GL
Log Measured From	K B
Drilling Measured From	K B
Elevation	5013
Other Services	

Date	12-30-05
Run Number	One
Depth Driller	7632
Depth Logger	7621
Bottom Logged Interval	7620
Top Log Interval	1500
Fluid Level	Full
Type Fluid	Water
Density / Viscosity	
Max. Recorded Temp.	245
Estimated Cement Top	1640
Time Well Ready	Portable Mast
Time Logger on Bottom	
Equipment Number	T 3 Tool 3
Location	Platteville
Recorded By	A. Munday
Witnessed By	Mr. Danielson
Borehole Record	
Run Number	Bit
From	To
Size	Weight
Wgt/Ft	From
Top	To
Bottom	
Casing Record	Size
Surface String	
Prot. String	
Production String	4 1/2
	11.6
	000
	T D

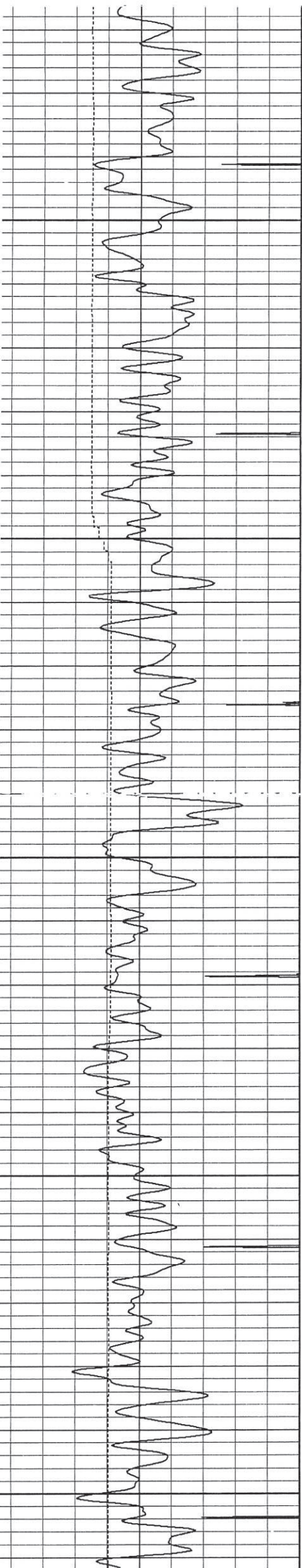
<<< Fold Here >>>

All interpretations are opinions based on inferences from electrical or other measurements and we cannot and do not guarantee the accuracy or correctness of any interpretation, and we shall not, except in the case of gross or willful negligence on our part, be liable or responsible for any loss, costs, damages, or expenses incurred or sustained by anyone resulting from any interpretation made by any of our officers, agents or employees. These interpretations are also subject to our general terms and conditions set out in our current Price Schedule.

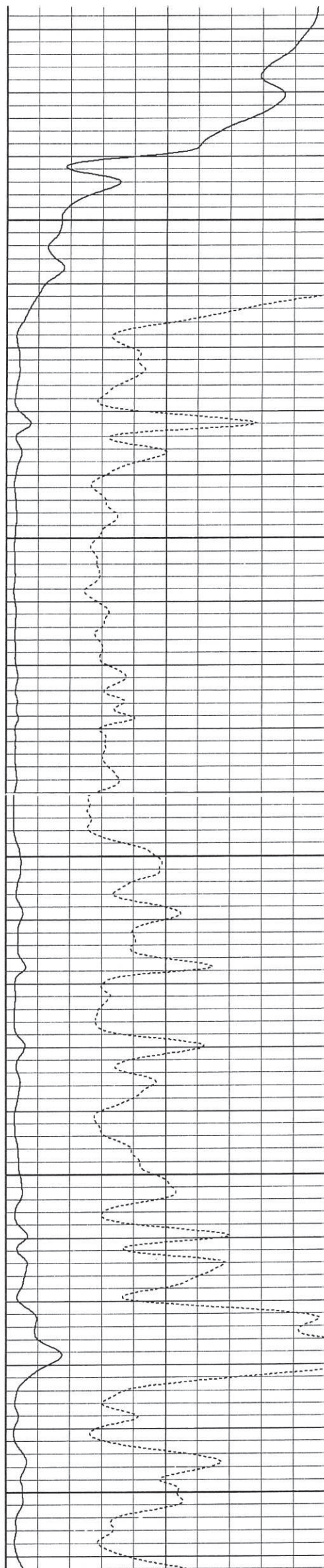
Comments

Database File: cblkorij1925.db
Dataset Pathname: pass3
Presentation Format: bond
Dataset Creation: Fri Dec 30 12:22:56 2005 by Log Warrior 7.0 Standar
Charted by: Depth in Feet scaled 1:240

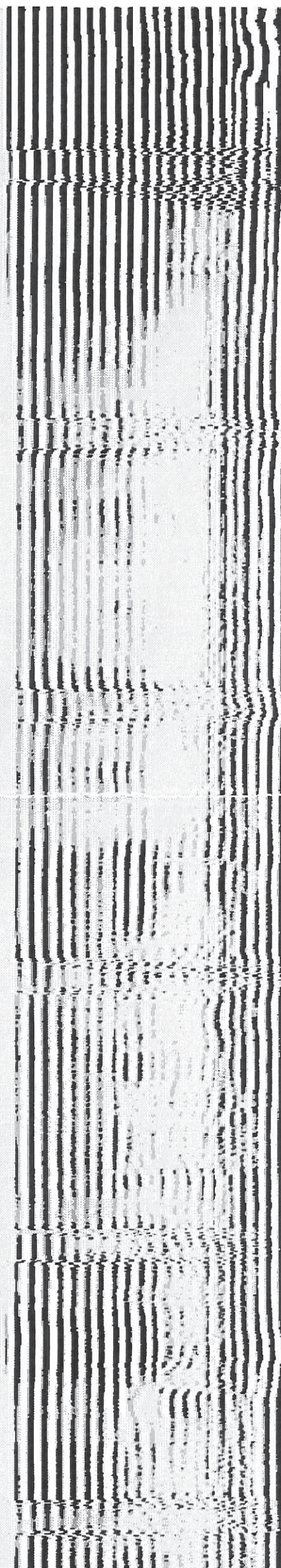
CCL	0.5	0	Amplitude (Pipe Bond) (mV)	100	200	VDL (Formation Bond)	1200
Gamma Ray (GAPI)	130	0	Amplified Amplitude (mV)	10			
Line Speed (ft/min)	-300						

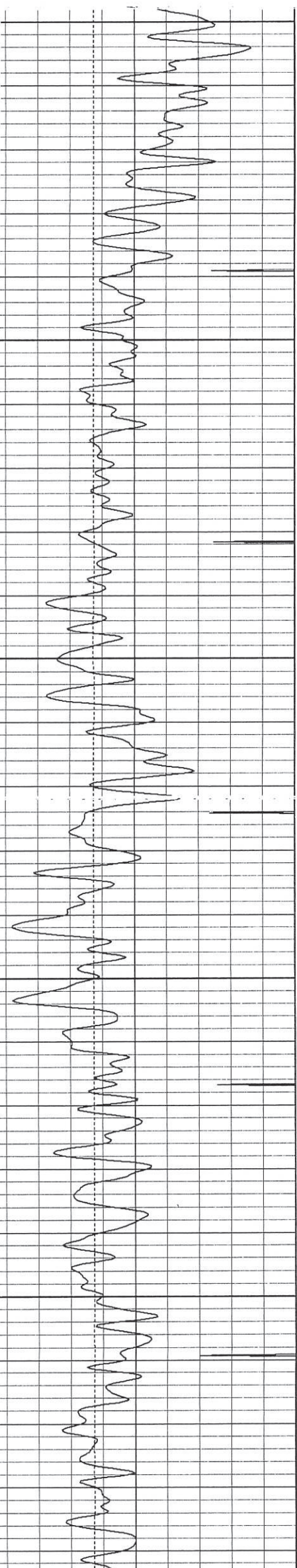


1700



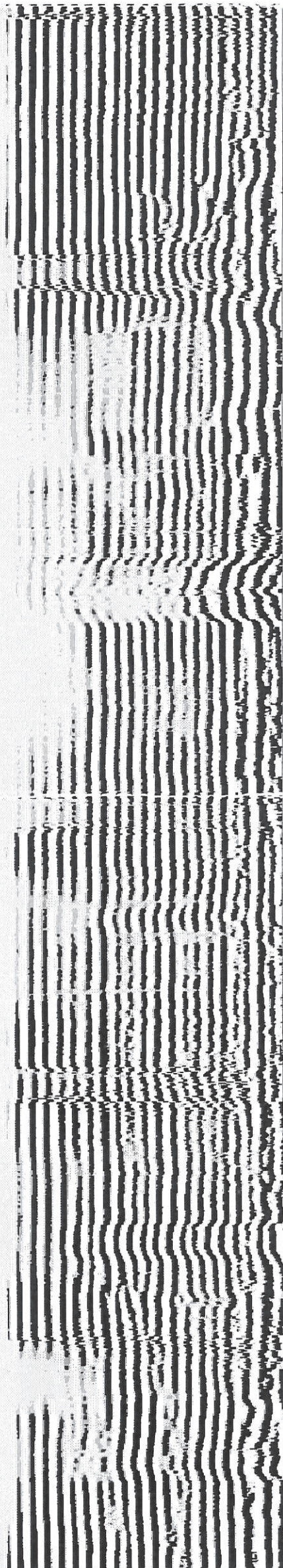
1800

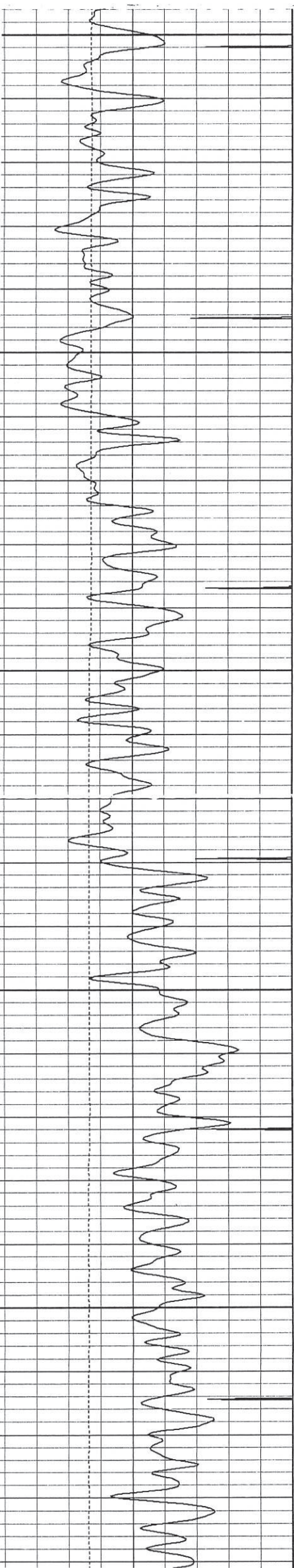




3900

4000

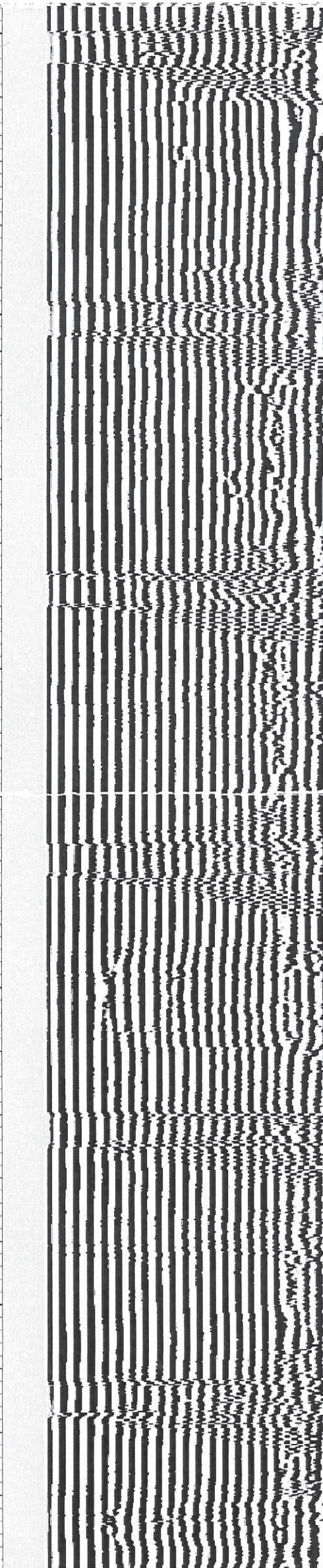
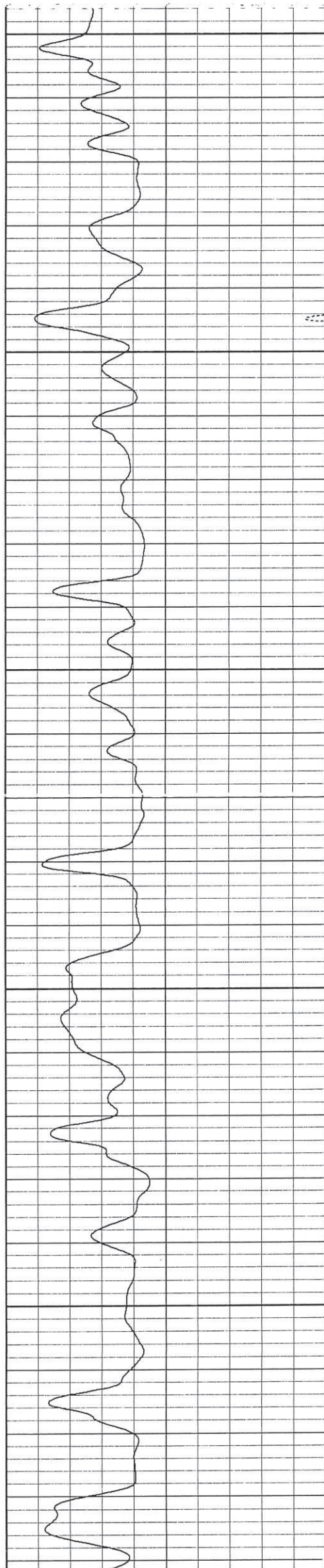


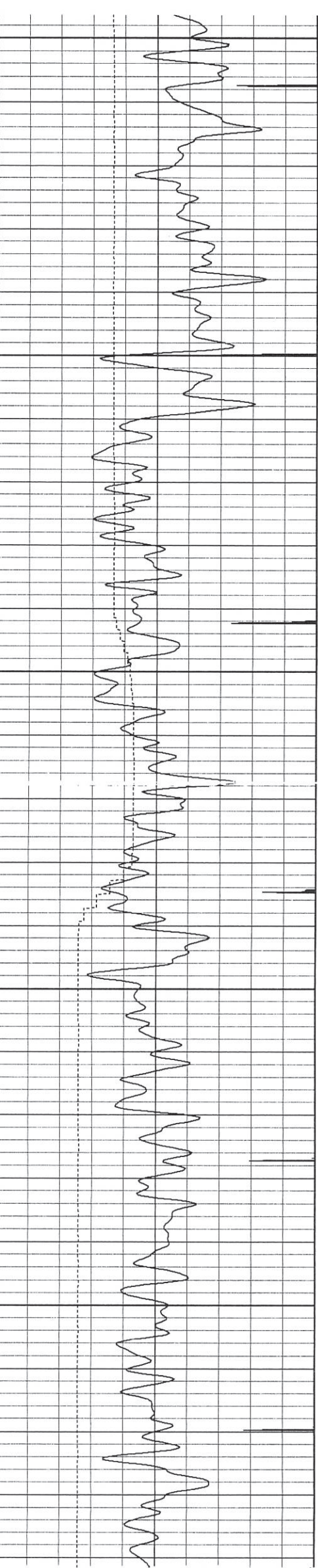


4100

4200

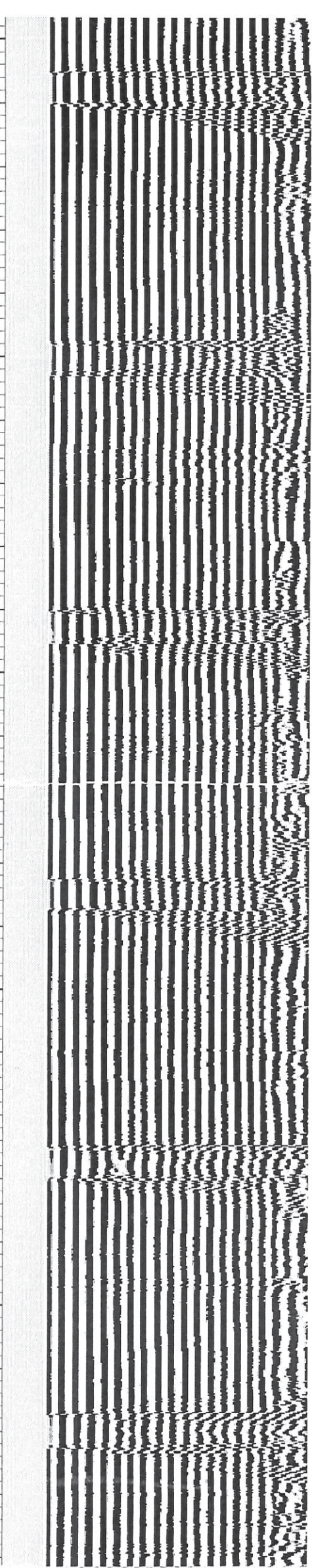
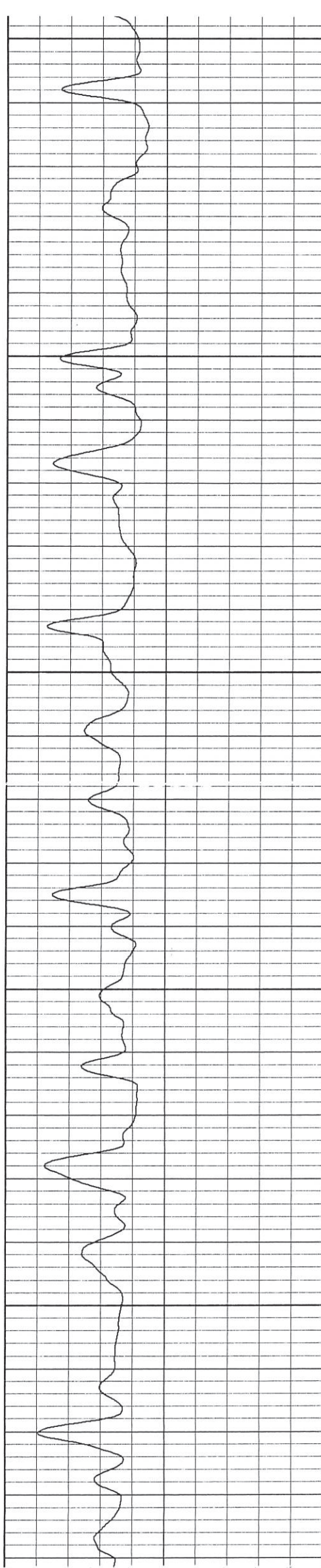
4300

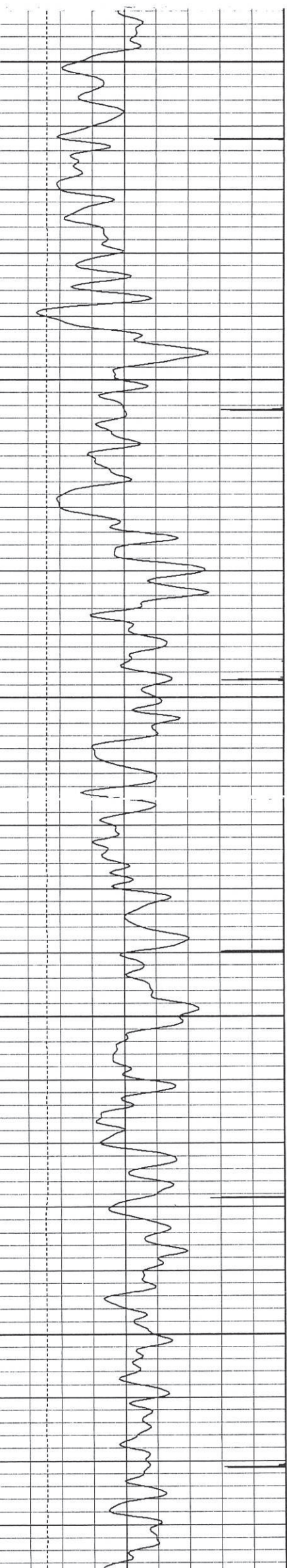




4400

4500

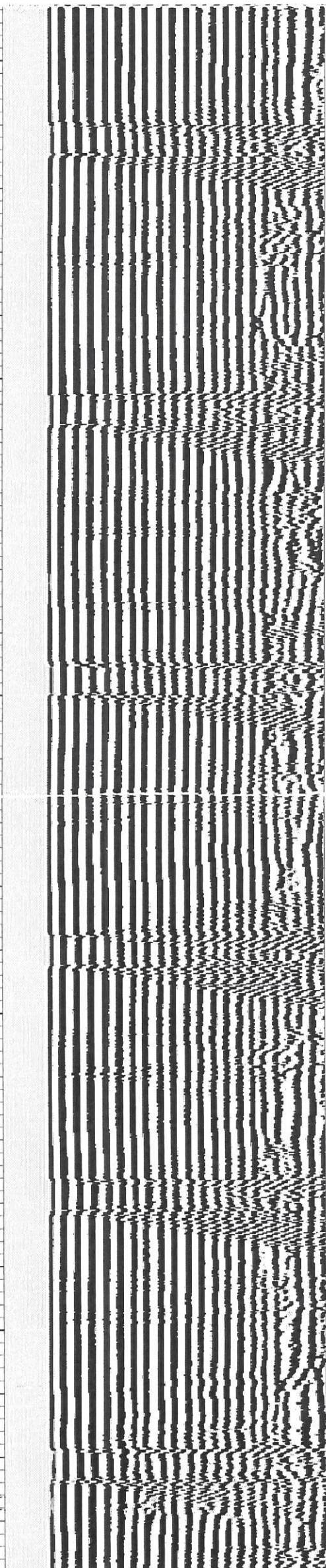
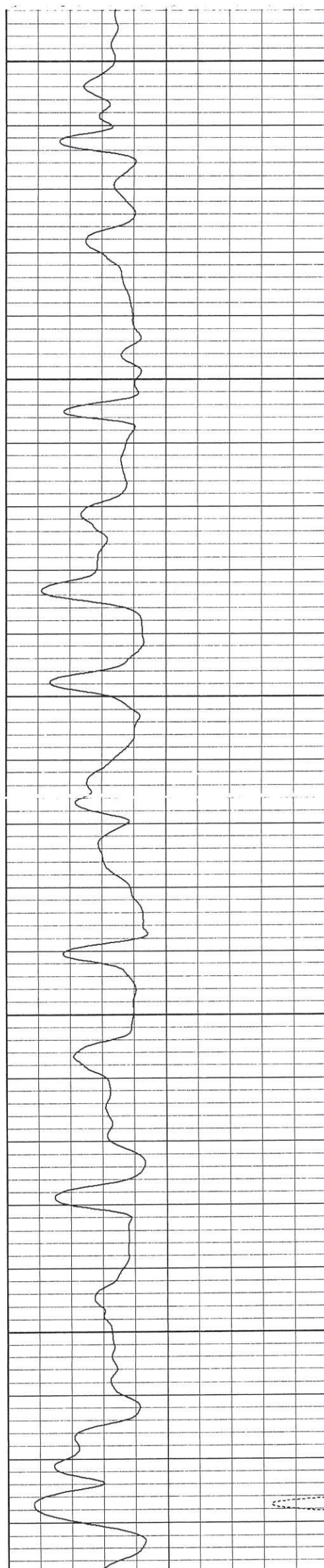


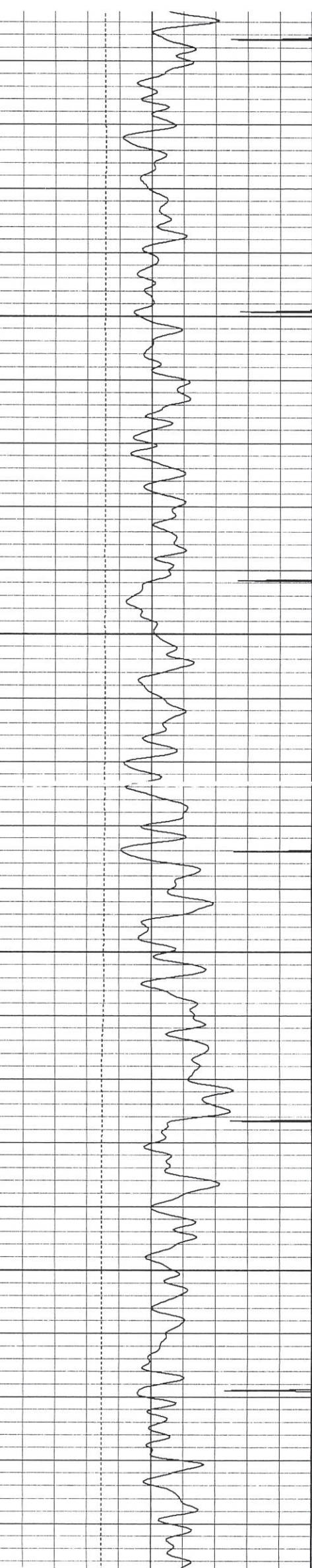


4600

4700

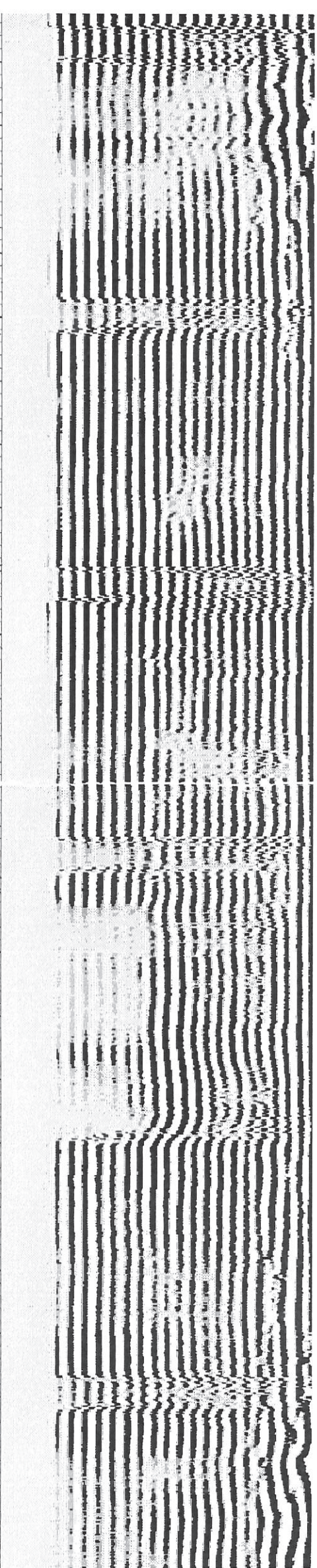
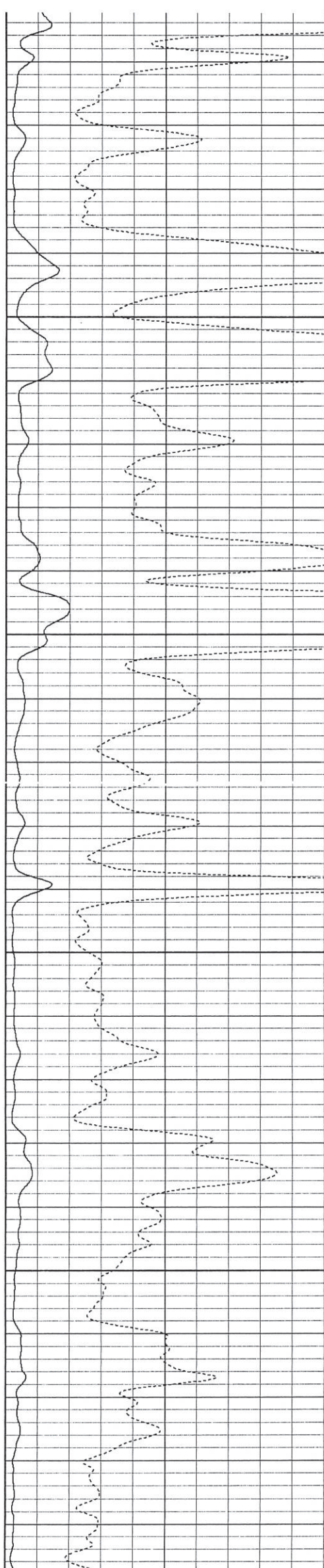
4800

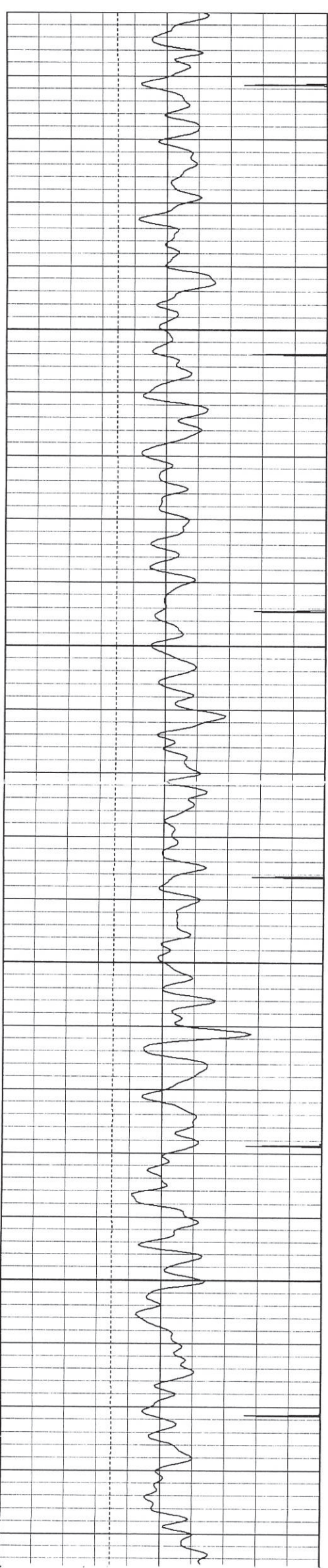




5800

5900

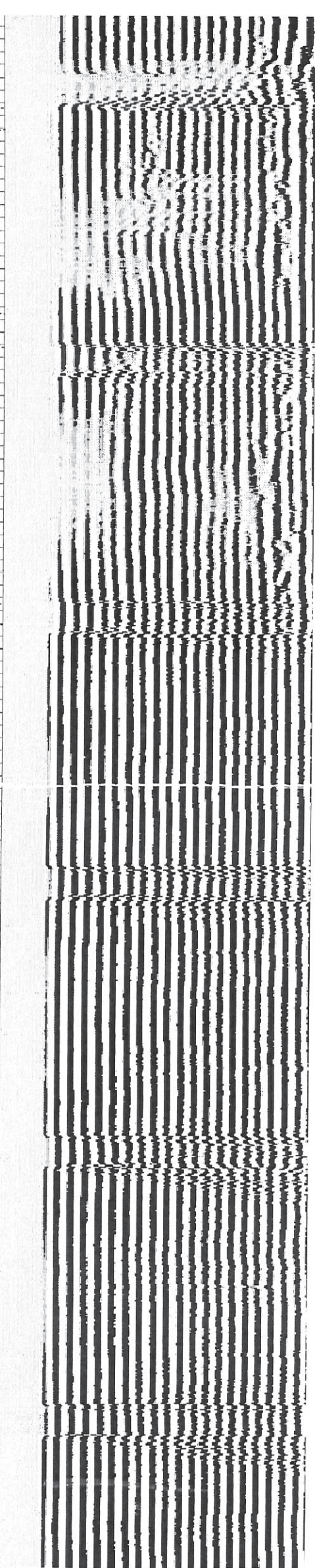
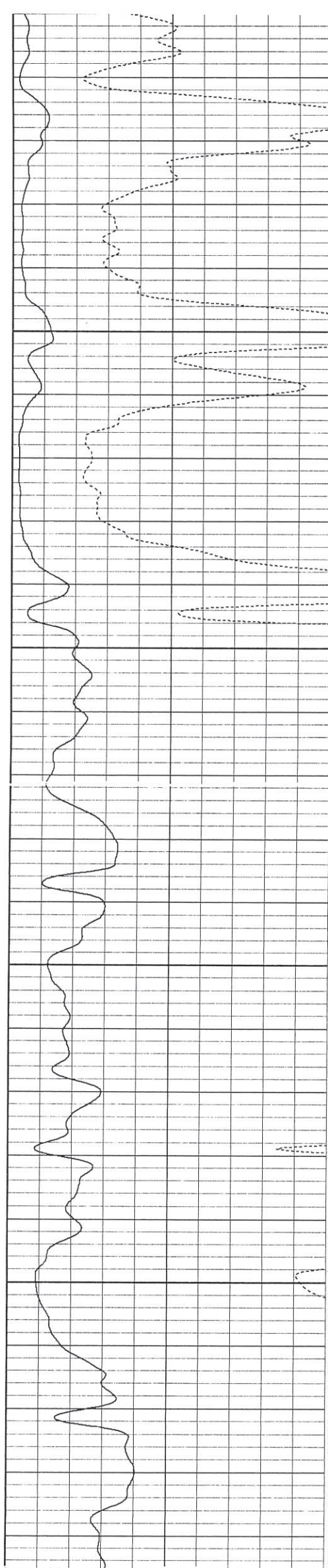


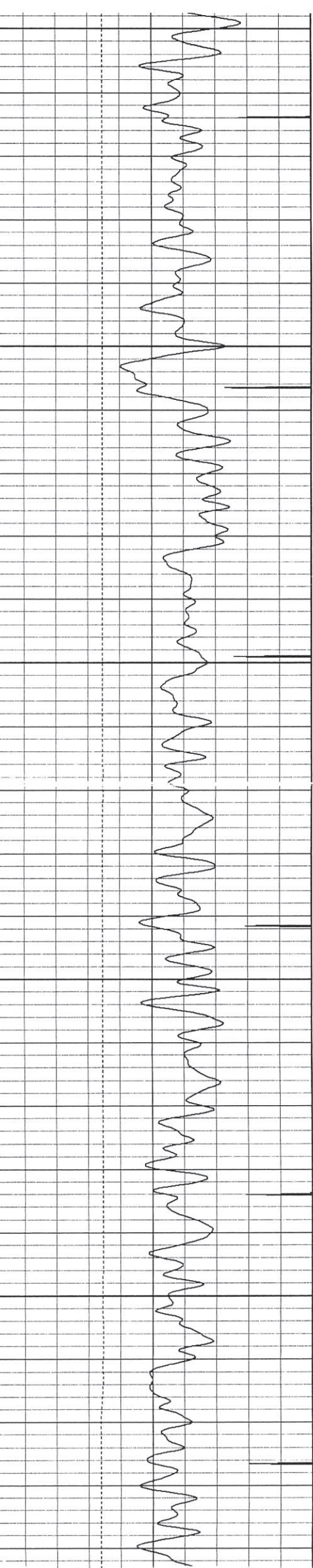


0000

6100

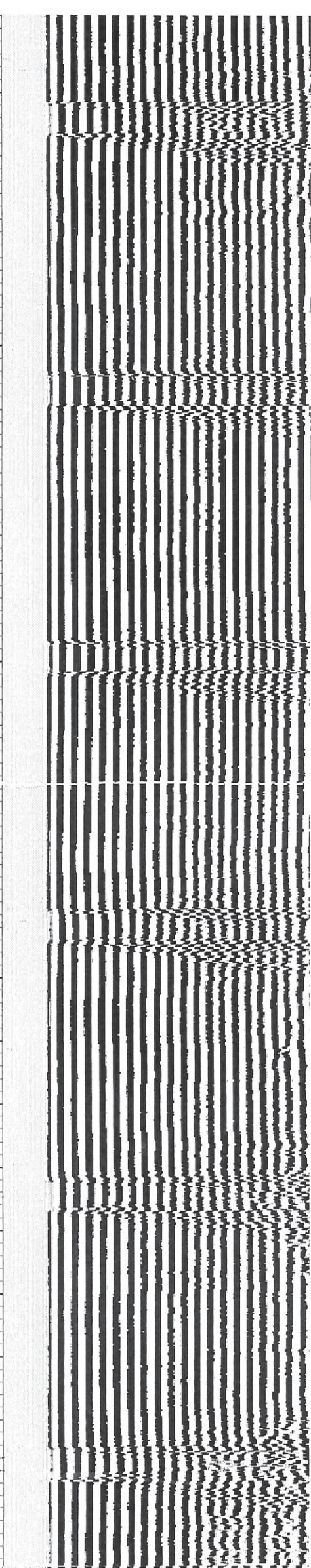
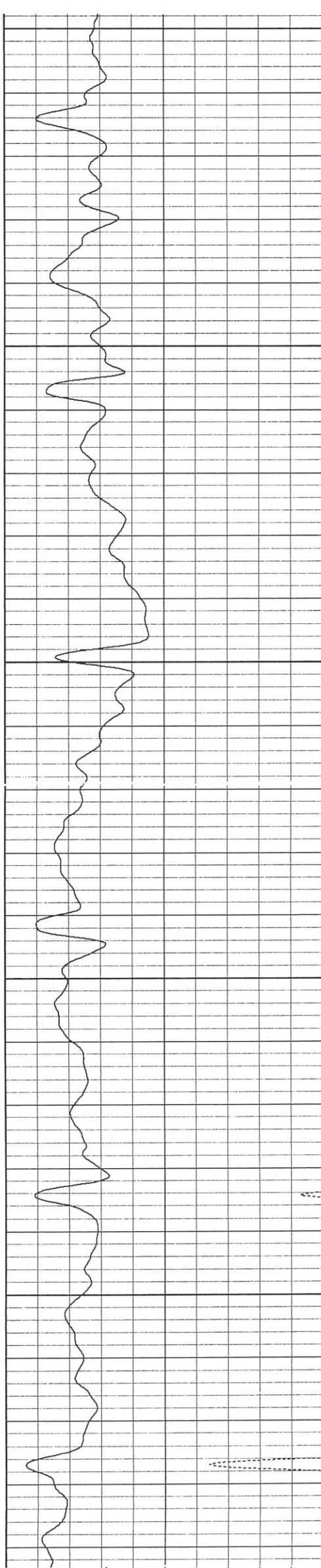
6200

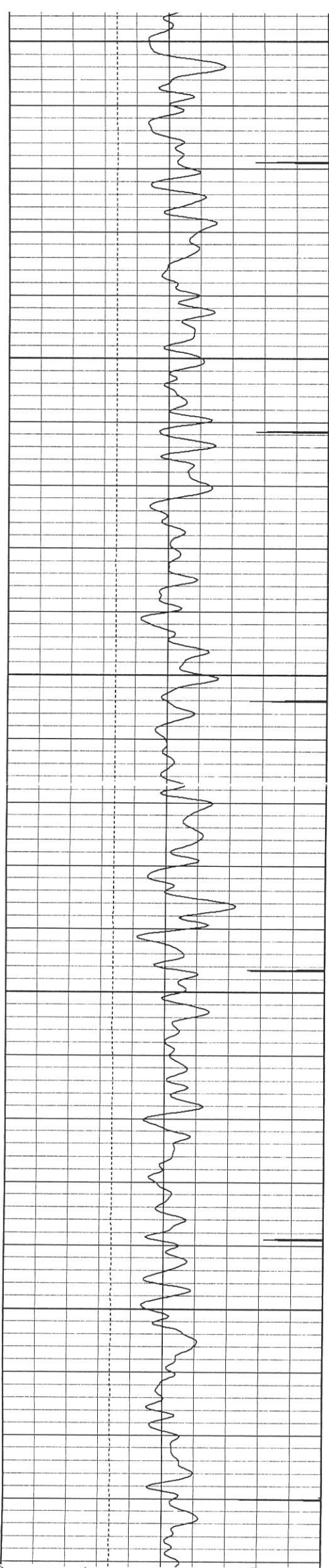




6300

6400

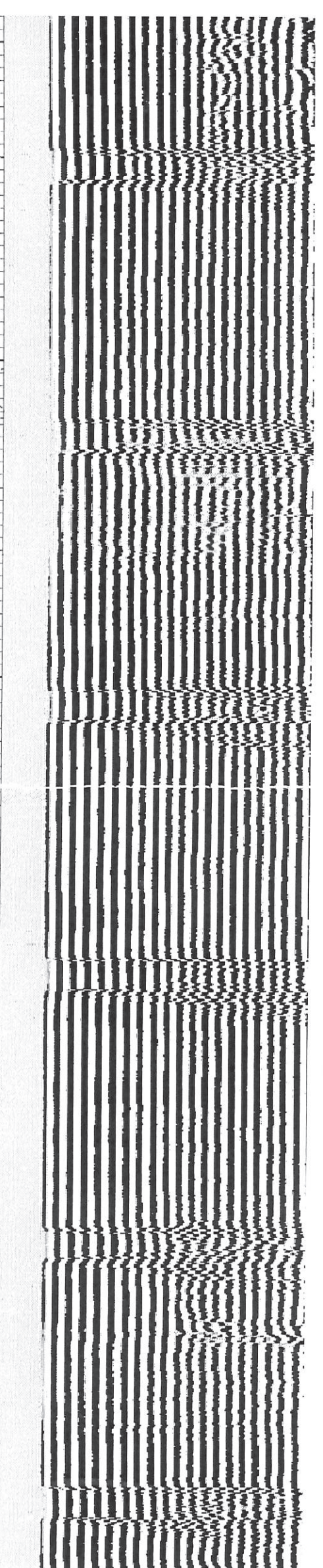
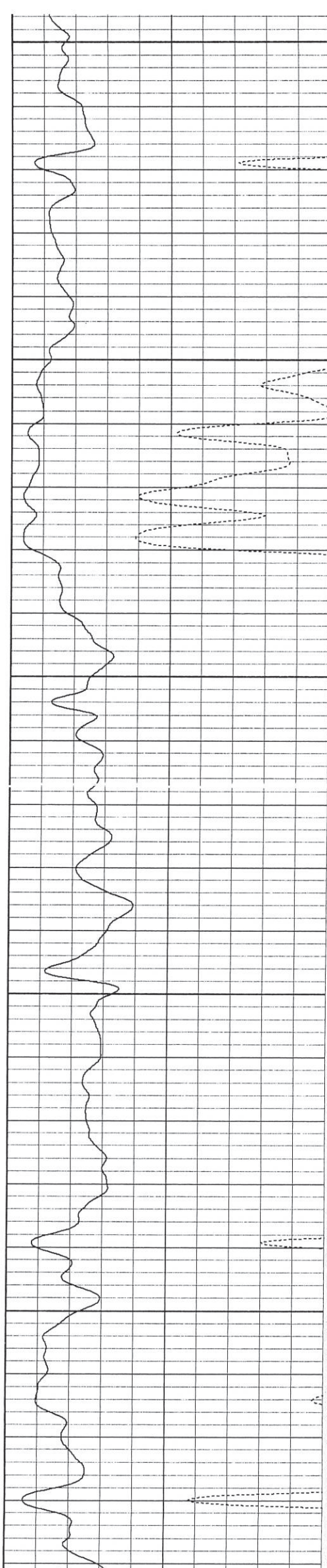


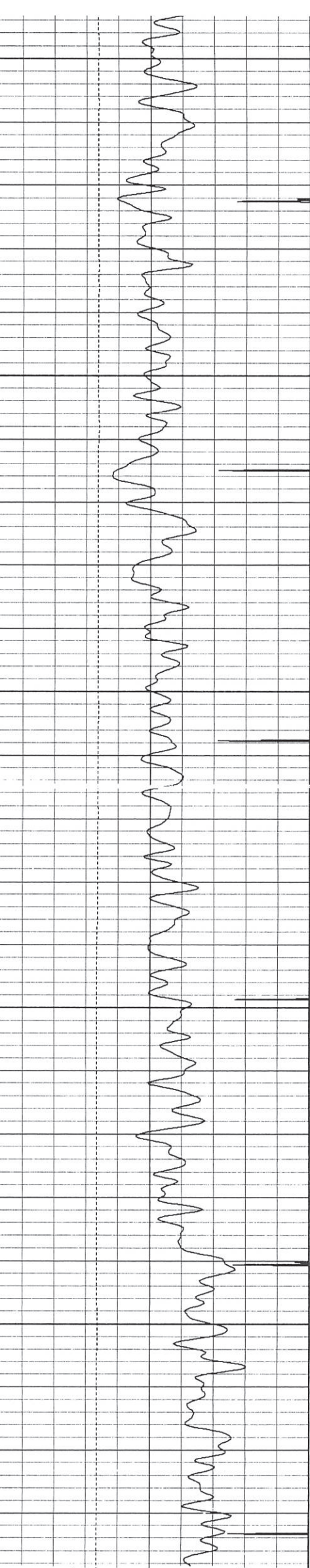


6500

6600

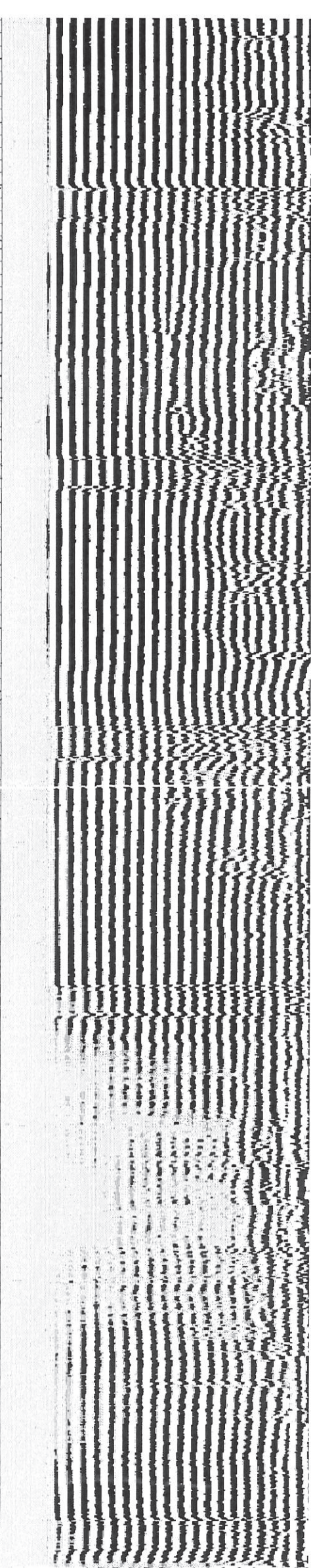
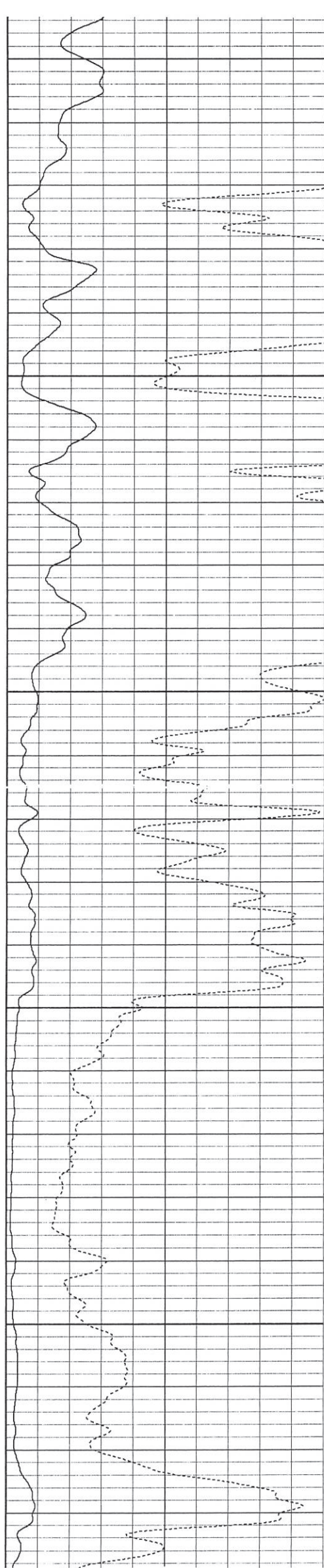
6700

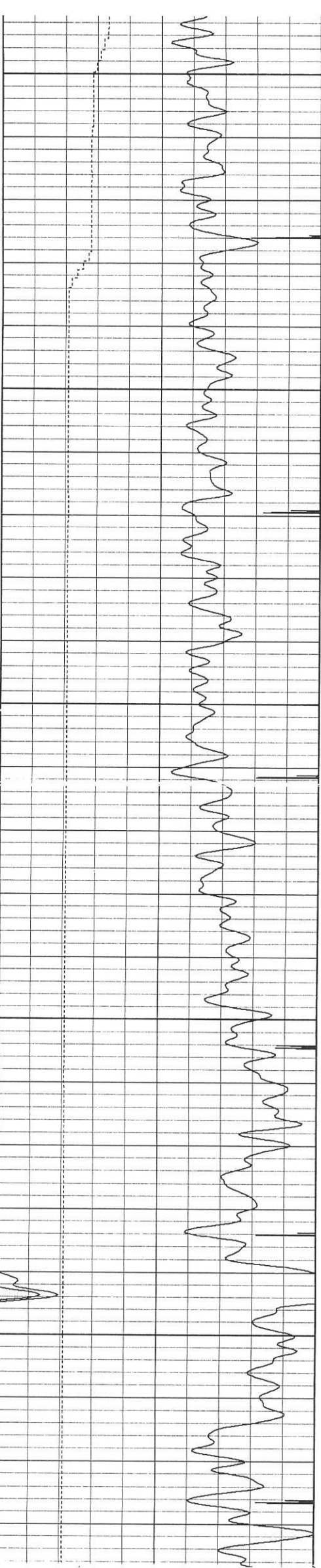




6800

6900



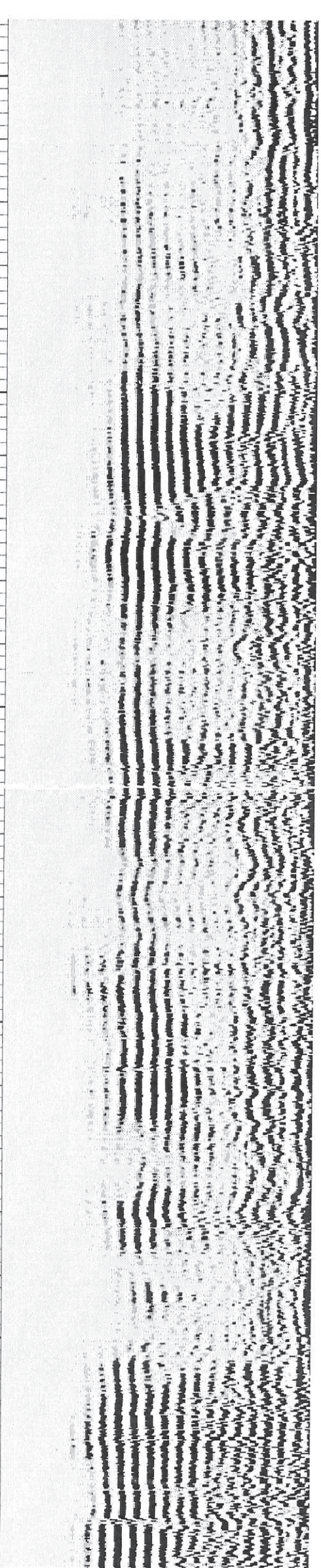
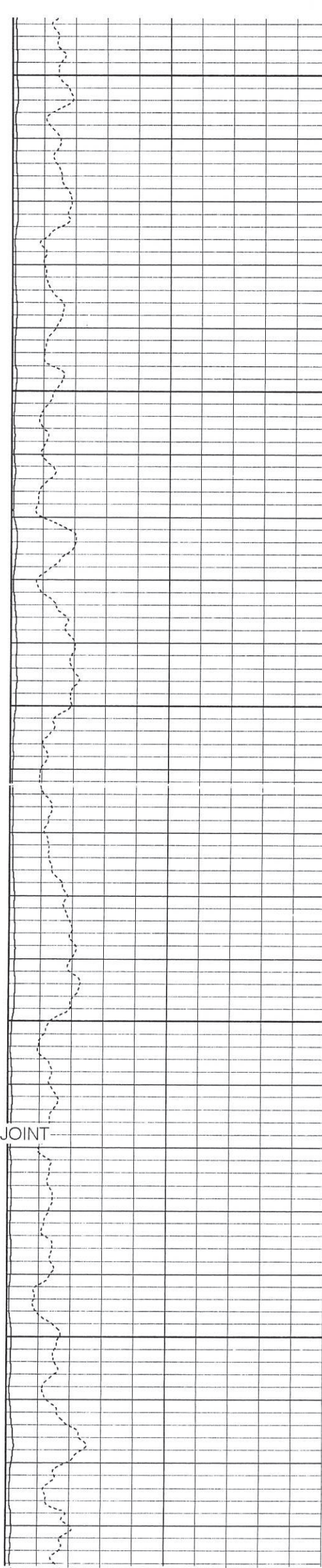


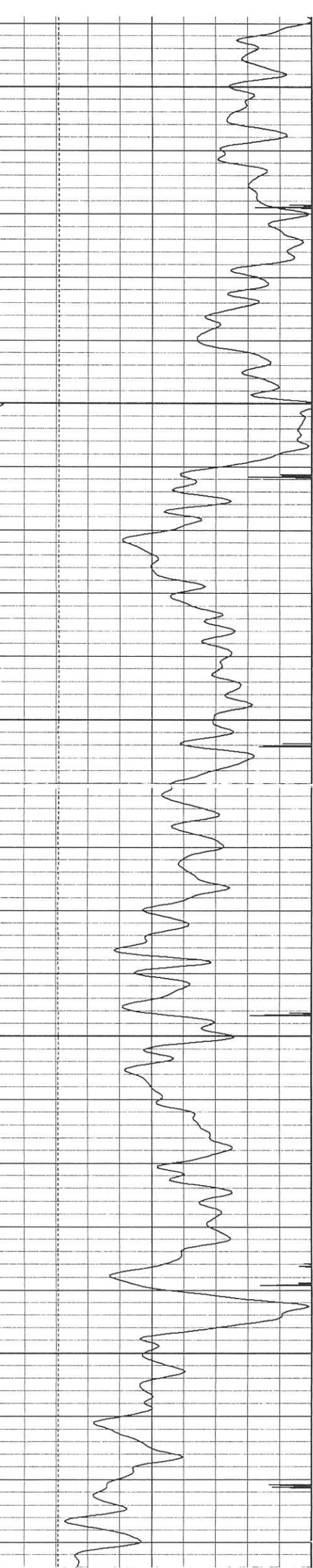
7000

7100

← FLAG JOINT

7200





7300

7400

← FLAG JOINT

