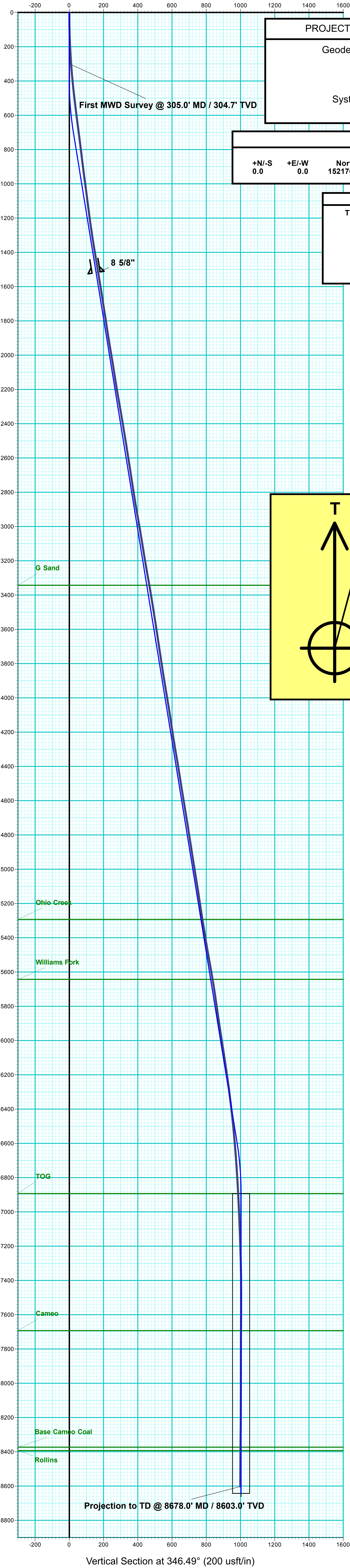


Company Name: Laramie Energy, LLC
Sup & Shep 0993-25-08W
Mesa County, CO
Rig:
Created By: Will Jircik
Date: 11/19/2018

Sup & Shep 0993-25-08W
Mesa County, CO
Q181550 & RM-181305
Design #2

DESIGN ANNOTATIONS									
MD	Inc	Azi	TVD	+N/-S	+E/-W	VSect	Departure	Annotation	
400.0	0.00	0.00	400.0	0.0	0.0	0.0	0.0	KOP (Build 3° / 100')	
707.2	9.22	346.49	705.9	24.0	-5.8	24.7	24.7	EOB @ 9.22° Inc. / 346.49° Azm	
6665.4	9.22	346.49	6587.1	951.8	-228.7	978.9	978.9	Drop 3° / 100'	
6972.6	0.00	0.00	6893.0	975.8	-234.5	1003.5	1003.5	EOD @ Vertical	
8722.6	0.00	0.00	8643.0	975.8	-234.5	1003.5	1003.5	TD @ 8722.6' MD / 8643.0' TVD	

DESIGN TARGET DETAILS							
Name	TVD	+N/-S	+E/-W	Northing	Easting	Latitude	Longitude
PBHL - SUP & SHEP 0993-25-08W	8643.0	975.8	-234.5	1522748.16	2370161.11	39.247503	-107.724255
						Shape	Circle (Radius: 50.0)



PROJECT DETAILS:		Mesa County, CO
Geodetic System:	US State Plane 1983	
Datum:	North American Datum 1983	
Ellipsoid:	GRS 1980	
Zone:	Colorado Central Zone	
System Datum:	Mean Sea Level	

WELL DETAILS: Sup & Shep 0993-25-08W					
GL: 8078.0					
+N/-S	+E/-W	Northing	Easting	Latitude	Longitude
0.0	0.0	1521766.95	2370371.65	39.244824	-107.723427

FORMATION TOP DETAILS		
TVDPath	MDPath	Formation
3343.0	3378.8	G Sand
5293.0	5354.3	Ohio Creek
5643.0	5708.9	Williams Fork
6893.0	6972.6	TOG
7693.0	7772.6	Cameo
8373.0	8452.6	Base Cameo Coal
8393.0	8472.6	Rollins

T

M

Azimuths to True North
Magnetic North: 9.34°

Strength: 51244.0snT
Dip Angle: 65.37°
Date: 11/6/2018
Model: USER DEFINED

