

Company Name: Laramie Energy, LLC
Sup & Shep 0993-25-10W
Mesa County, CO
Rig: H&P #522
Created By: Will Jircik
Date: 11/12/2018

Sup & Shep 0993-25-10W
Mesa County, CO
Q181548 & RM-181303
Design #2

DESIGN ANNOTATIONS									
MD	Inc	Azi	TVD	+N/-S	+E/-W	VSect	Departure	Annotation	
1500.0	0.00	0.00	1500.0	0.0	0.0	0.0	0.0	KOP (Build 3' / 100')	
1766.5	8.00	331.64	1765.7	16.3	-8.8	18.6	18.6	EOB @ 8.00° Inc. / 331.64° Azm	
5400.5	8.00	331.64	5364.3	461.2	-248.9	524.0	524.0	Drop 3' / 100'	
5667.1	0.00	0.00	5630.0	477.5	-257.7	542.6	542.6	EOD @ Vertical	
8667.1	0.00	0.00	8630.0	477.5	-257.7	542.6	542.6	TD @ 8667.1' MD / 8630.0' TVD	

DESIGN TARGET DETAILS								
Name	TVD	+N/-S	+E/-W	Northing	Easting	Latitude	Longitude	Shape
PBHL - SUP & SHEP 0993-25-10W	8630.0	477.5	-257.7	152237.28	2370120.56	39.246098	-107.724354	Circle (Radius: 50.0)

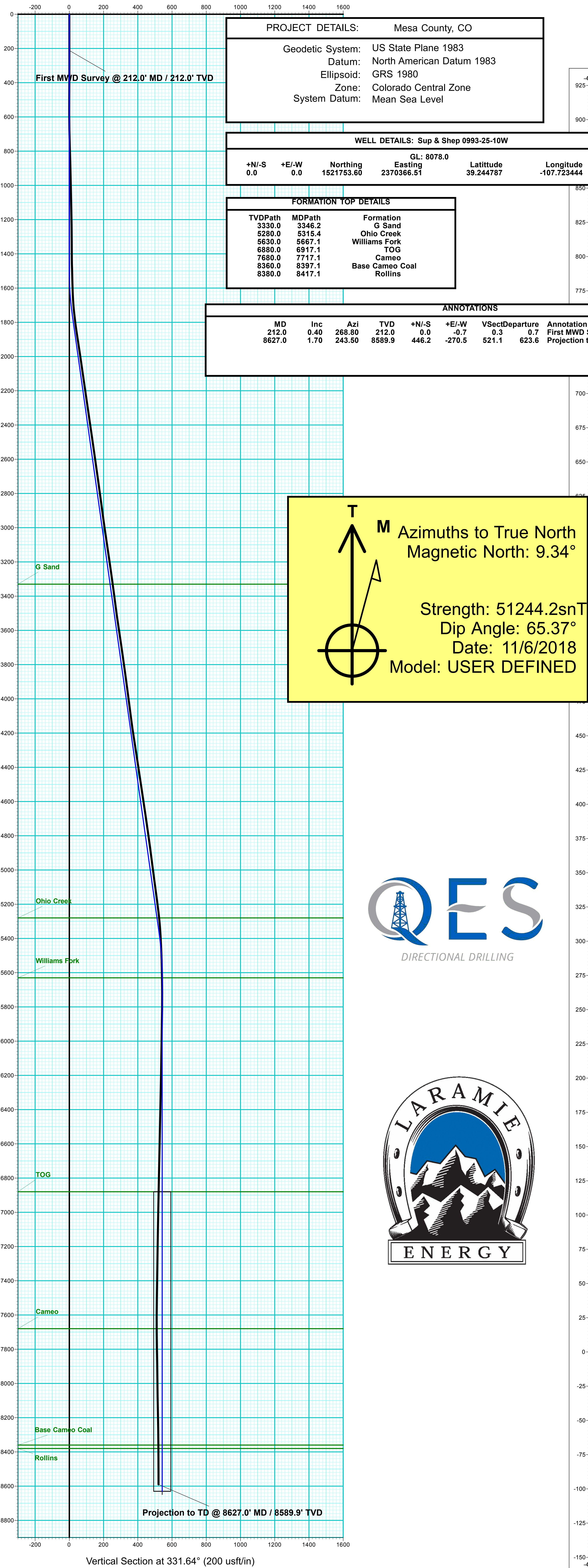
PROJECT DETAILS: Mesa County, CO

Geodetic System: US State Plane 1983
Datum: North American Datum 1983
Ellipsoid: GRS 1980
Zone: Colorado Central Zone
System Datum: Mean Sea Level

WELL DETAILS: Sup & Shep 0993-25-10W						
			GL: 8078.0			
+N/-S	+E/-W	Northing	Easting	Latitude	Longitude	
0.0	0.0	1521753.60	2370366.51	39.244787	-107.723444	

FORMATION TOP DETAILS		
TVDPath	MDPath	Formation
3330.0	3346.2	G Sand
5280.0	5315.4	Ohio Creek
5630.0	5667.1	Williams Fork
6880.0	6917.1	TOG
7680.0	7717.1	Cameo
8360.0	8397.1	Base Cameo Coal
8380.0	8417.1	Rollins

ANNOTATIONS									
MD	Inc	Azi	TVD	+N/-S	+E/-W	VSect	Departure	Annotation	
212.0	0.40	268.80	212.0	0.0	-0.7	0.3	0.7	First MWD Survey @ 212.0' MD / 212.0' TVD	
8627.0	1.70	243.50	8589.9	446.2	-270.5	521.1	623.6	Projection to TD @ 8627.0' MD / 8589.9' TVD	



T

M

Azimuths to True North

Magnetic North: 9.34°

Strength: 51244.2snT

Dip Angle: 65.37°

Date: 11/6/2018

Model: USER DEFINED

