

Inspection Photos

3/08/2019

Operator: FOUNDATION ENERGY
MANAGEMENT LLC - 10112

Location ID: 330865

Inspection Doc. Number: 682504574
Weld County, CO

Aaron Trujillo
NE Reclamation Specialist
COGCC

Inspection Photos
Operator: FOUNDATION ENERGY MANAGEMENT LLC - 10112
Location ID: 330865

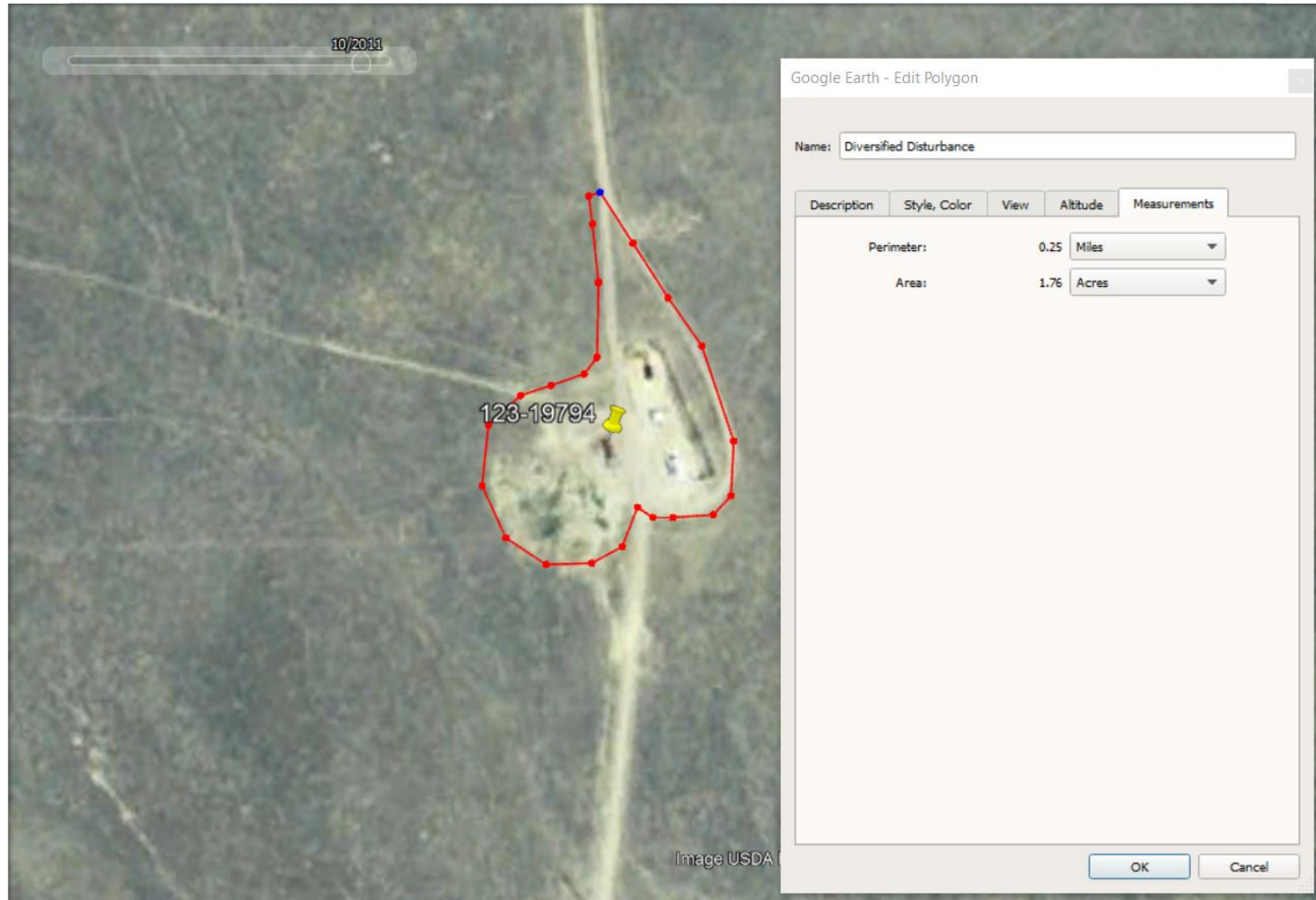


Photo 1: 2011 Aerial imagery. Location under the operation of Diversified Operating at time of image. Photo shows disturbance area to be ~1.76 acres

Inspection Photos
Operator: FOUNDATION ENERGY MANAGEMENT LLC - 10112
Location ID: 330865

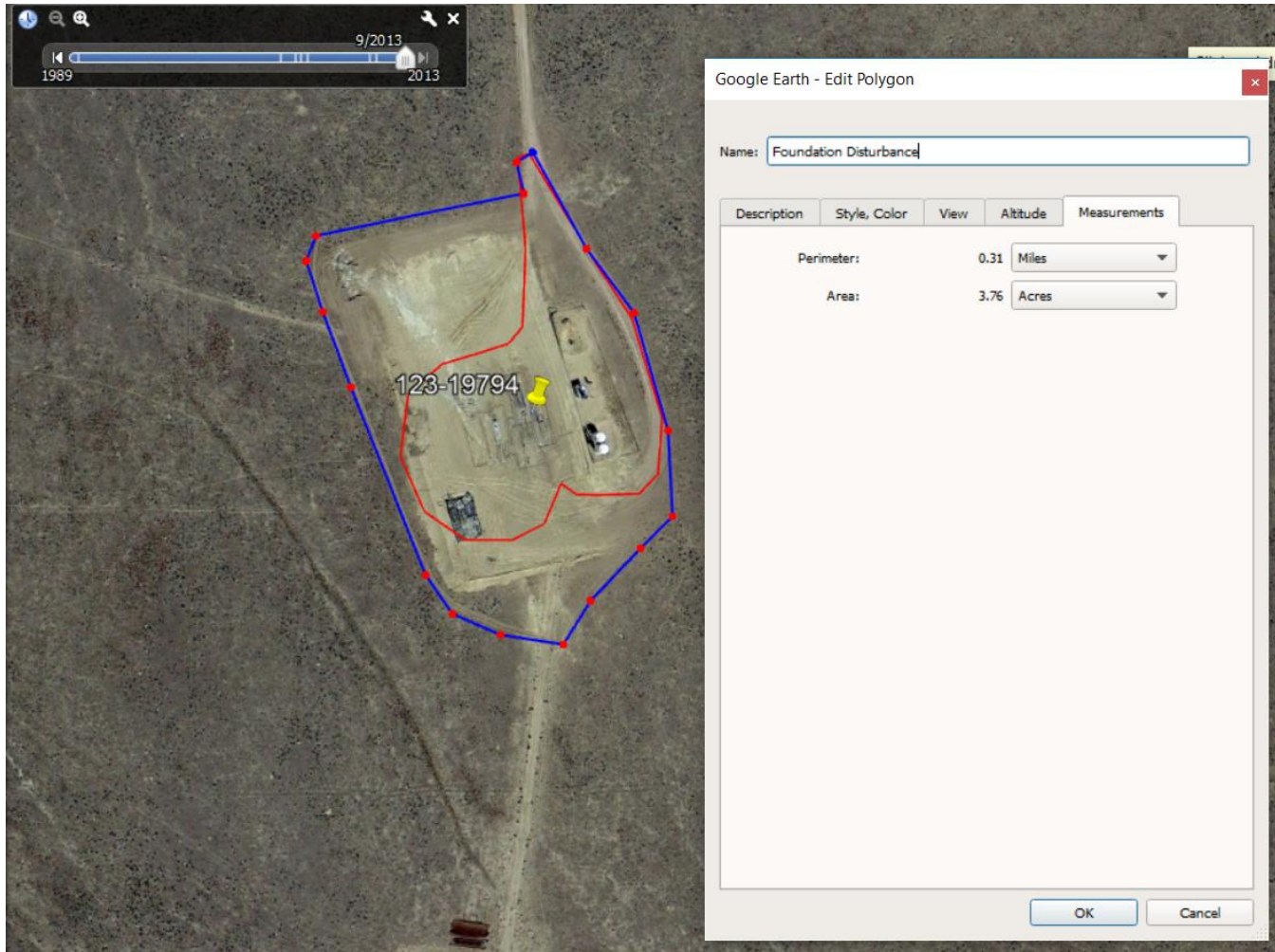


Photo 2: 2013 Aerial imagery. Location transferred ownership from Diversified to Foundation Energy in 2012. Photo shows Foundation expanded the disturbance of the location to its current size of ~3.76 acres. Location disturbance area, and areas not needed for production were not reclaimed in accordance with 1003.b.

Inspection Photos
Operator: FOUNDATION ENERGY MANAGEMENT LLC - 10112
Location ID: 330865

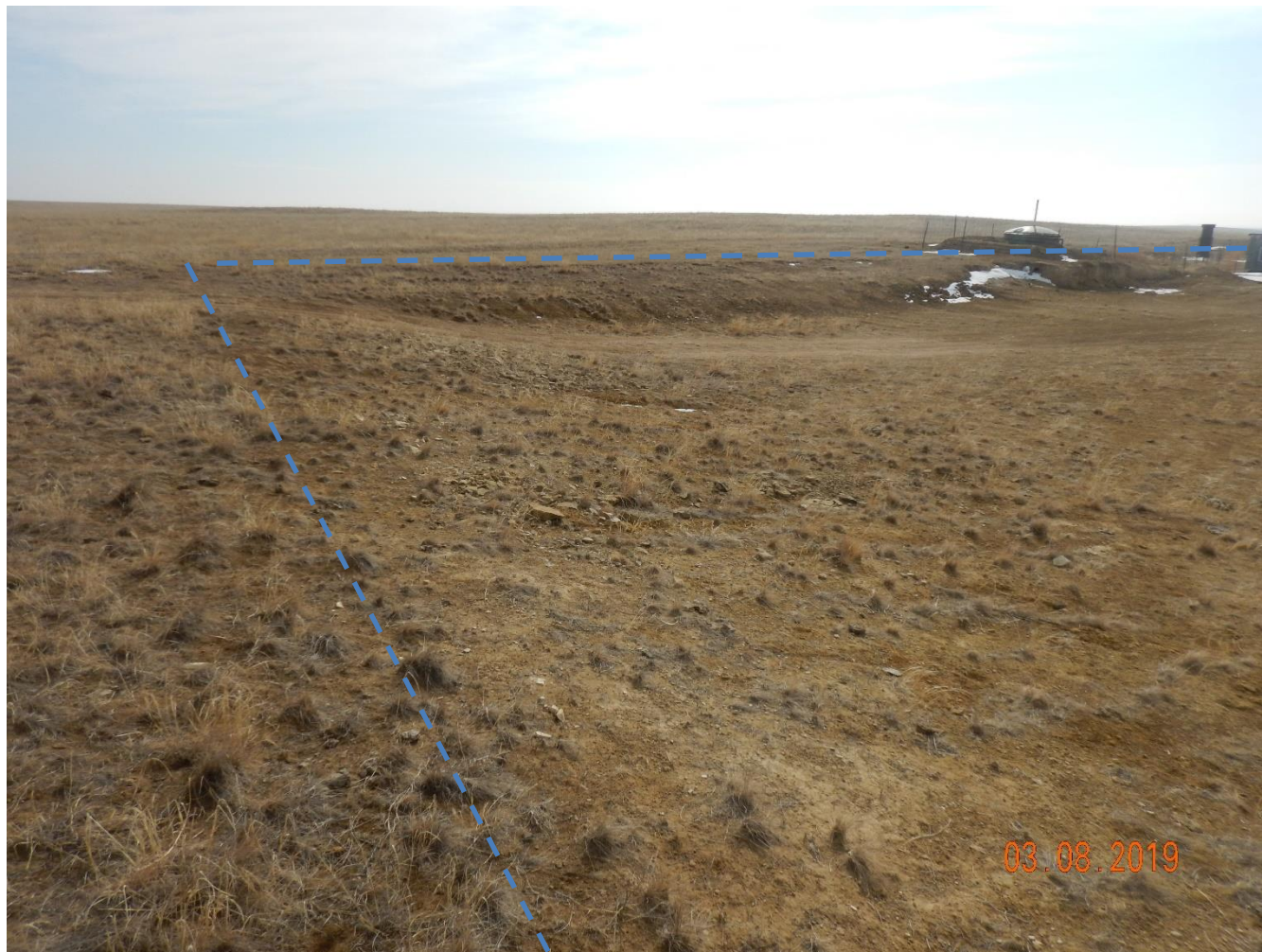


Photo 3: Photo taken from the north end of the location, facing east. Photos 3- 6 provide and overview of the location from east, southeast, southwest to west. Previous inspections required operator to comply with 1003 and conduct interim reclamation on areas not needed for production. Photos show interim reclamation has not been conducted in accordance with Rule 1003.b. Blue line shows approximate perimeter of the pad.

Inspection Photos
Operator: FOUNDATION ENERGY MANAGEMENT LLC - 10112
Location ID: 330865



Photo 4: See comments under photo 3.

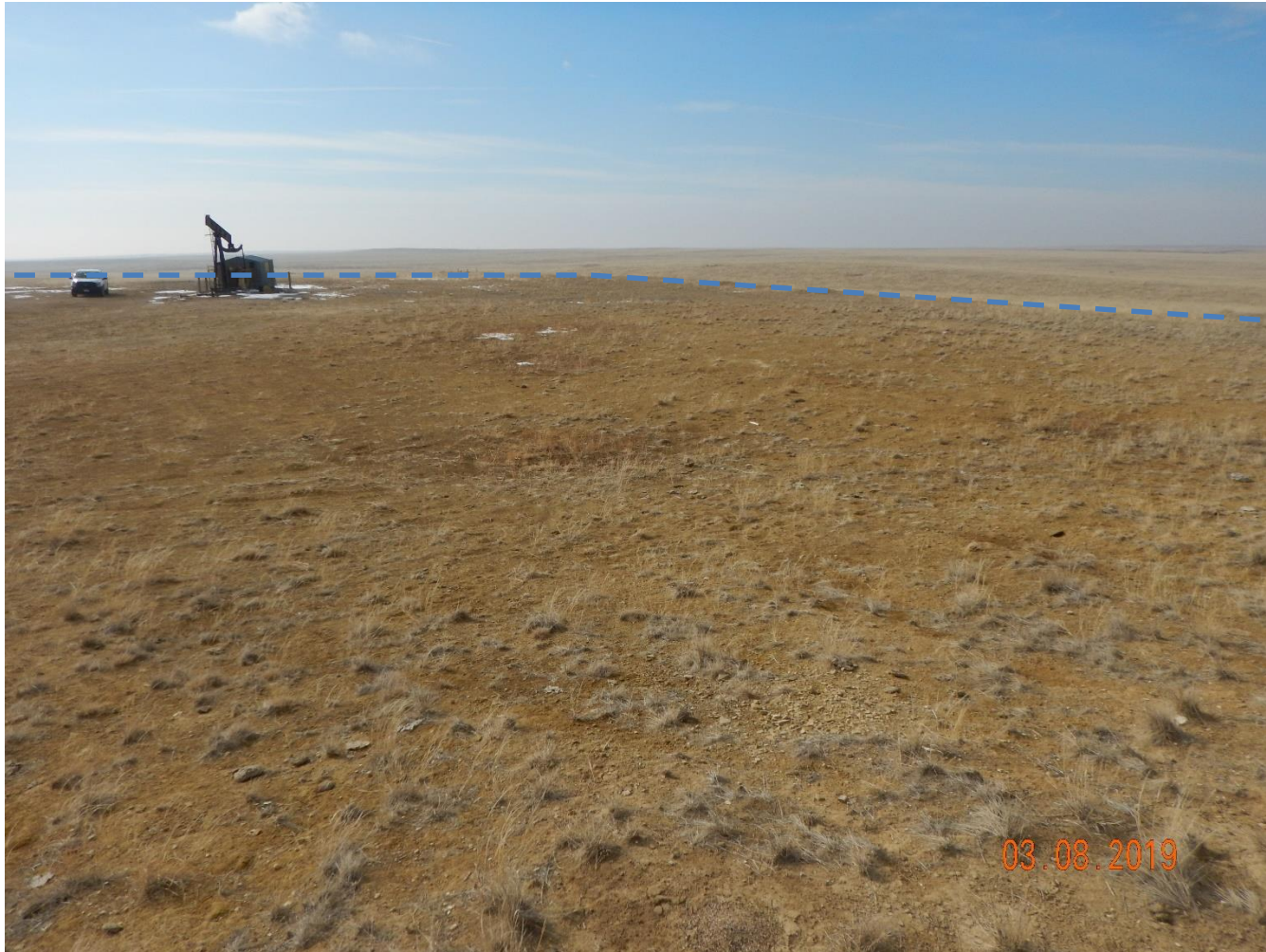


Photo 5: See comments under photo 3.



Photo 6: See comments under photo 3.



Photo 7: Photo taken from the north end of the location, facing north. Previous inspections documented slopes on location remain predominantly bare and exposed soil with stormwater erosion degradation evident. Slopes remains bare and erosion degradation remains evident.

Inspection Photos
Operator: FOUNDATION ENERGY MANAGEMENT LLC - 10112
Location ID: 330865



Photo 8: Photo taken from the northwest corner of the location, facing east. See comments under photo 3.



Photo 9: Photo taken from the northwest corner of the location, facing south. See comments under photo 3. Blue line shows perimeter of pad. Yellow lines shows perimeter of the disturbance area.



Photo 10: Photo taken from the northwest end of the pad, facing south. Photo shows the location remains predominantly bare and exposed soil.



Photo 11: Photo taken from the southeast corner of the pad, facing north. See comments under photo 3.

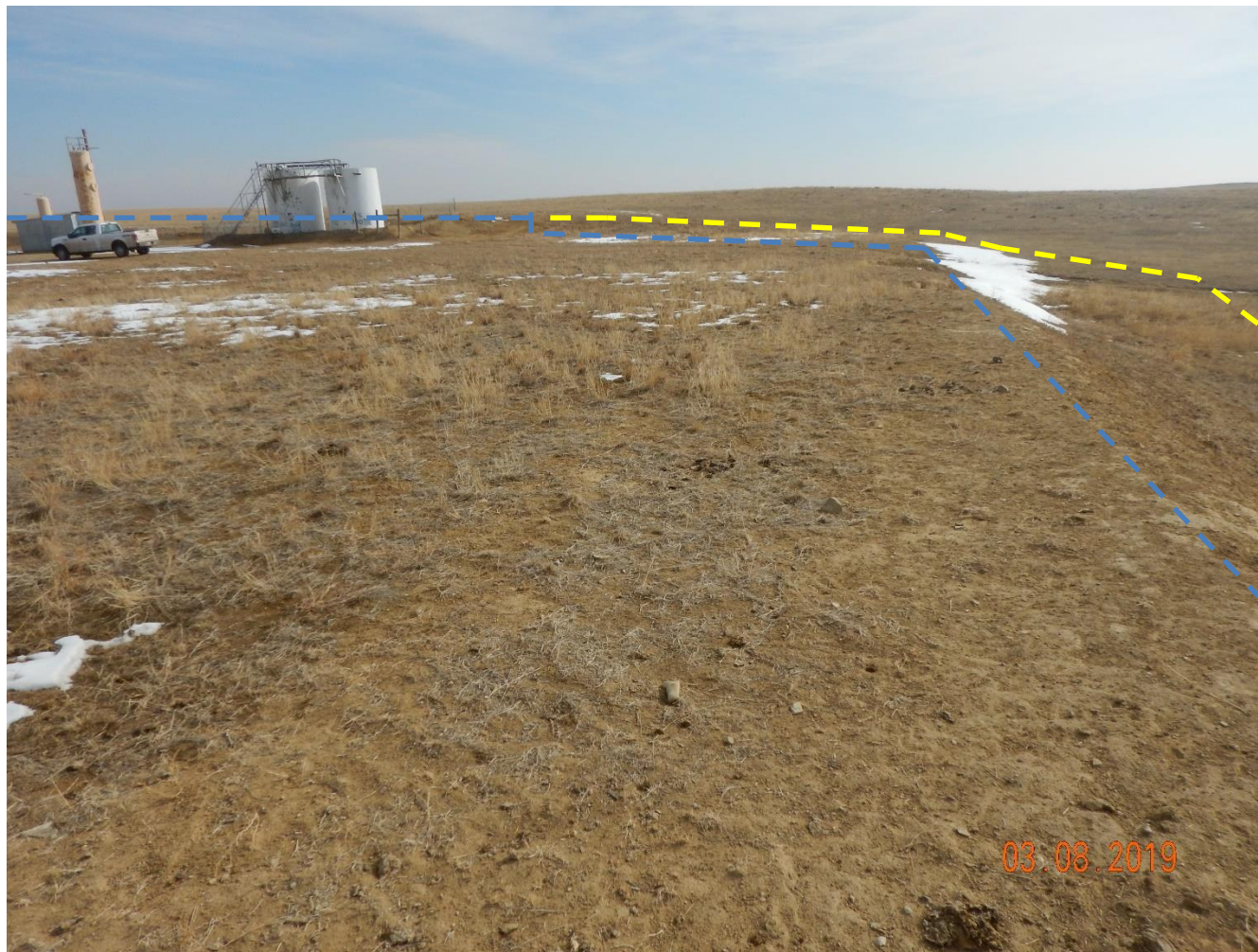


Photo 12: Photo taken from the slopes of the interim areas on the east end of the location. Photo shows slopes remains predominantly bare and exposed soil with little desirable perennial vegetative establishment. Photo also shows the erosion blankets/netting along slopes are in disrepair and no longer in proper functioning condition.



Photo 13: Photo taken from the southwest corner of the location, facing northeast. Previous inspections documented slopes on location remain predominantly bare and exposed soil with stormwater erosion degradation evident. Slopes remains bare and erosion degradation remains evident.



Photo 14: Photo taken from the southwest corner of the location, facing east. Previous inspections documented slopes on location remain predominantly bare and exposed soil with stormwater erosion degradation evident. Slopes remains bare and erosion degradation remains evident.



Photo 15: Photo taken from the south end of the location, facing north. Previous inspections documented erosion degradation on the location and required operator to implement BMPs in accordance with 1002.f. Photo shows erosion degradation remains, no BMPs have been installed or maintained.



Photo 16: PhoPhoto taken from the south end of the location, facing northeast. Previous inspections documented erosion degradation on the location and required operator to implement BMPs in accordance with 1002.f. Photo shows erosion degradation remains, no BMPs have been installed or maintained.



Photo 17: Photo taken from the northwest end of the pad, facing south. Photo shows the location remains predominantly bare and exposed soil.

Inspection Photos
Operator: FOUNDATION ENERGY MANAGEMENT LLC - 10112
Location ID: 330865



Photo 18: Photo taken from the well, facing south. Photo shows fence around pump unit is in disrepair.



Photo 19: Photo taken from the east end of the location, facing southeast. Photo of tank battery.



Photo 20: Photo taken from the east end of the location, facing northeast. Photo shows unpermitted pit.

Inspection Photos
Operator: FOUNDATION ENERGY MANAGEMENT LLC - 10112
Location ID: 330865



Photo 21: Photo taken from the southwest corner of the unpermitted pit.



Photo 22: Photo taken from the west end of the unpermitted pit, facing northeast. Photo shows wildlife have burrowed into the walls of the pit compromising the integrity of the pit walls.

Inspection Photos
Operator: FOUNDATION ENERGY MANAGEMENT LLC - 10112
Location ID: 330865

Inspection Photos
Location Name: State 36-3-9
Location ID: 330865



Photo 12: Burrow on NW side of pit



Photo 13: Burrow on W side of pit

Photo 23: Photos from the 4/05/2018 inspection. Photos for comparison to photo 22. Photo show burrows at pit have not been repaired.



Photo 24: Photo taken from the pit, facing northeast. Photo shows wildlife have burrowed into the walls of the pit compromising the integrity of the pit walls.