

PETROLEUM DEVELOPMENT CORP Weld County CO

Well Name: **Guttersen 31T-301**

Surface Location: Guttersen 31Q-401 Pad Sec.31-T3N-R63W  
North American Datum 1983 , US State Plane 1983 , Colorado Northern Zone

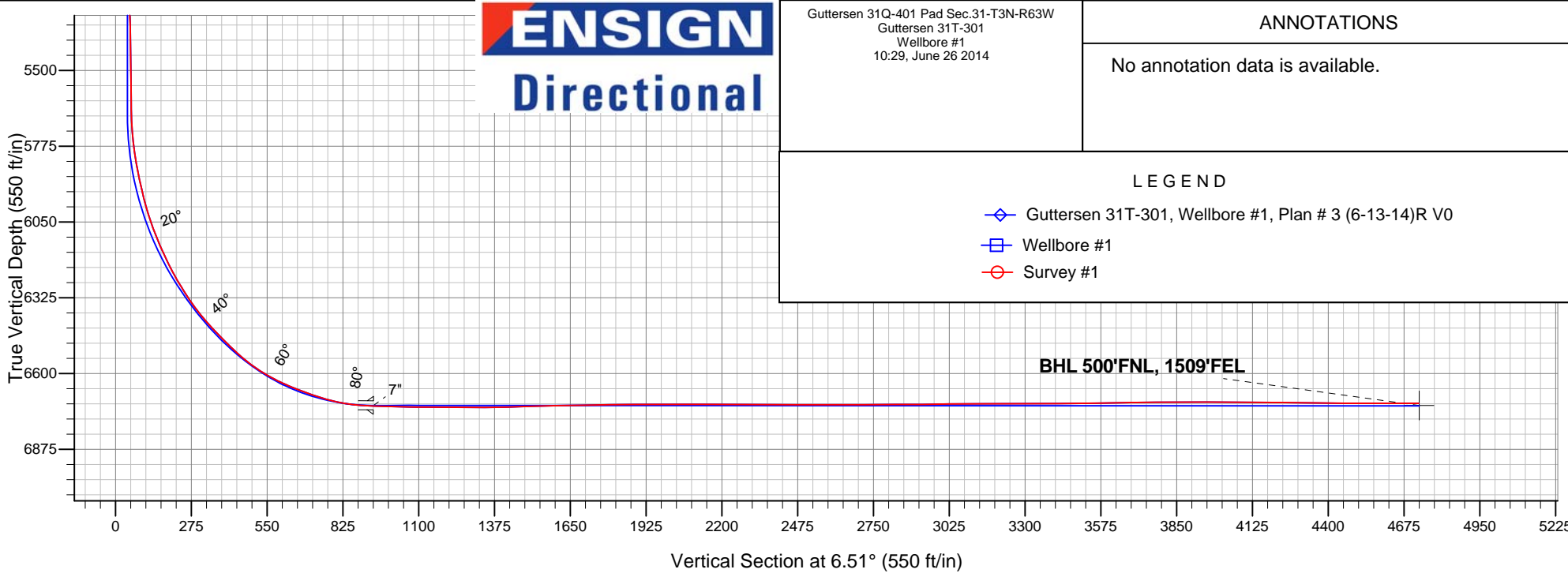
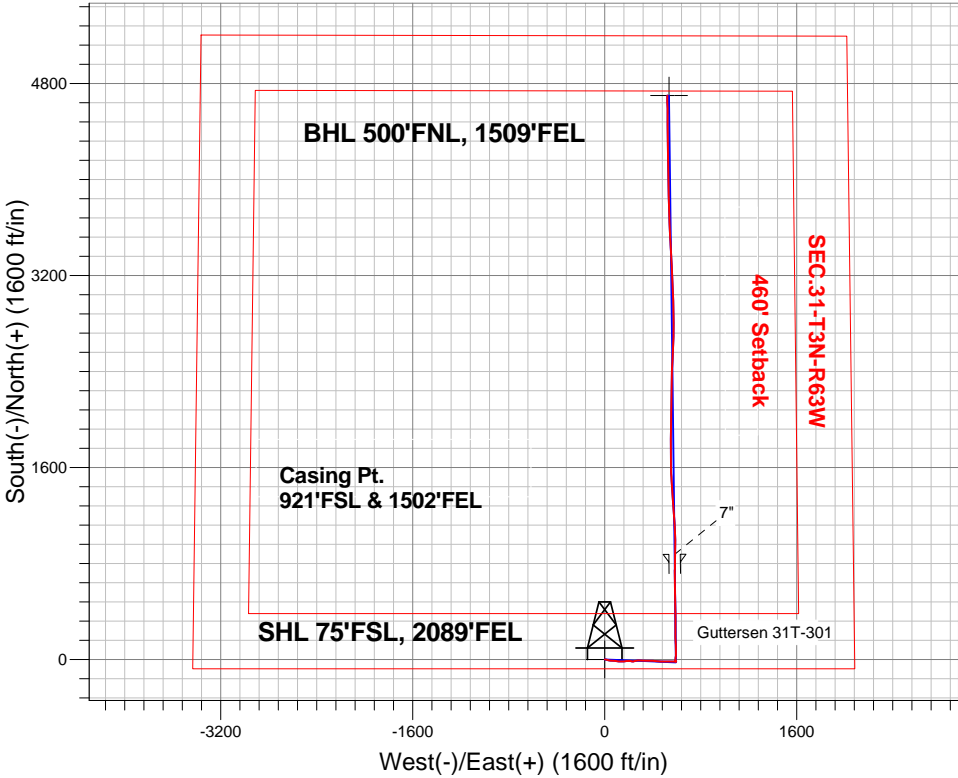
Ground Elevation: 4823.0

+N/-S	+E/-W	Northing	Easting	Latitude	Longitude	Slot
0.0	0.0	1308192.45	3285467.50	40.174870	-104.478390	

Ensign Rig #136 - RKB - 12.5' WELL @ 4835.5ft (Ensign Rig #136 - RKB - 12.5')

FINAL SURVEY

Projected Bottom Hole Location  
11048'MD 6709'TVD 4699'N & 522'E of SHL  
89.8 degree Incl @ 359.7 degree AZM





# **PETROLEUM DEVELOPMENT CORP Weld County CO**

**SEC.31-T3N-R63W**

**Guttersen 31Q-401 Pad Sec.31-T3N-R63W**

**Guttersen 31T-301**

**Wellbore #1**

**Survey: Survey #1**

## **Standard Survey Report**

**26 June, 2014**

<b>Company:</b>	PETROLEUM DEVELOPMENT CORP Weld County CO	<b>Local Co-ordinate Reference:</b>	Well Gutteresen 31T-301
<b>Project:</b>	SEC.31-T3N-R63W	<b>TVD Reference:</b>	WELL @ 4835.5ft (Ensign Rig #136 - RKB - 12.5')
<b>Site:</b>	Gutteresen 31Q-401 Pad Sec.31-T3N-R63W	<b>MD Reference:</b>	WELL @ 4835.5ft (Ensign Rig #136 - RKB - 12.5')
<b>Well:</b>	Gutteresen 31T-301	<b>North Reference:</b>	True
<b>Wellbore:</b>	Wellbore #1	<b>Survey Calculation Method:</b>	Minimum Curvature
<b>Design:</b>	Wellbore #1	<b>Database:</b>	Landmark

<b>Project</b>	SEC.31-T3N-R63W, Weld County, Colorado		
<b>Map System:</b>	US State Plane 1983	<b>System Datum:</b>	Mean Sea Level
<b>Geo Datum:</b>	North American Datum 1983		Using Well Reference Point
<b>Map Zone:</b>	Colorado Northern Zone		Using geodetic scale factor

Site		Guttersen 31Q-401 Pad Sec.31-T3N-R63W			
Site Position:		Northing:	1,308,191.41 ft	Latitude:	40.174870
From:	Lat/Long	Easting:	3,285,375.30 ft	Longitude:	-104.478720
Position Uncertainty:	0.0 ft	Slot Radius:	"	Grid Convergence:	0.66 °

Well	Guttersen 31T-301					
Well Position	+N-S	0.0 ft	Northing:	1,308,192.45 ft	Latitude:	40.174870
	+E-W	0.0 ft	Easting:	3,285,467.50 ft	Longitude:	-104.478390
Position Uncertainty		0.0 ft	Wellhead Elevation:	ft	Ground Level:	4,823.0 ft

<b>Wellbore</b>	Wellbore #1				
<b>Magnetics</b>	<b>Model Name</b>	<b>Sample Date</b>	<b>Declination (°)</b>	<b>Dip Angle (°)</b>	<b>Field Strength (nT)</b>
	IGRF2010	6/13/2014	8.29	66.81	52,728

Design	Wellbore #1				
Audit Notes:					
Version:	1.0	Phase:	ACTUAL	Tie On Depth:	0.0
Vertical Section:	Depth From (TVD) (ft)	+N/-S (ft)	+E/-W (ft)	Direction (°)	
	0.0	0.0	0.0	6.51	

<b>Survey Program</b>	<b>Date</b>	6/26/2014			
<b>From (ft)</b>	<b>To (ft)</b>	<b>Survey (Wellbore)</b>	<b>Tool Name</b>	<b>Description</b>	
41.0	11,048.0	Survey #1 (Wellbore #1)	MWD	MWD - Standard	

<b>Survey</b>										
<b>Measured Depth (ft)</b>	<b>Inclination (°)</b>	<b>Azimuth (°)</b>	<b>Vertical Depth (ft)</b>	<b>+N-S (ft)</b>	<b>+E-W (ft)</b>	<b>Vertical Section (ft)</b>	<b>Dogleg Rate (°/100ft)</b>	<b>Build Rate (°/100ft)</b>	<b>Turn Rate (°/100ft)</b>	
0.0	0.00	0.00	0.0	0.0	0.0	0.0	0.00	0.00	0.00	
1.0	0.02	85.80	1.0	0.0	0.0	0.0	1.95	1.95	0.00	
<b>SHL 75°FSL, 2089°FEL</b>										
41.0	0.80	85.80	41.0	0.0	0.3	0.1	1.95	1.95	0.00	
130.0	1.20	89.90	130.0	0.1	1.8	0.3	0.46	0.45	4.61	
222.0	2.20	96.70	221.9	-0.1	4.6	0.4	1.11	1.09	7.39	
312.0	3.30	98.70	311.8	-0.7	8.8	0.3	1.23	1.22	2.22	
403.0	3.50	102.00	402.7	-1.7	14.1	-0.1	0.31	0.22	3.63	
494.0	3.70	117.10	493.5	-3.6	19.5	-1.4	1.06	0.22	16.59	
584.0	5.40	106.40	583.2	-6.1	26.1	-3.1	2.10	1.89	-11.89	

<b>Company:</b>	PETROLEUM DEVELOPMENT CORP Weld County CO	<b>Local Co-ordinate Reference:</b>	Well Gutteresen 31T-301
<b>Project:</b>	SEC.31-T3N-R63W	<b>TVD Reference:</b>	WELL @ 4835.5ft (Ensign Rig #136 - RKB - 12.5')
<b>Site:</b>	Gutteresen 31Q-401 Pad Sec.31-T3N-R63W	<b>MD Reference:</b>	WELL @ 4835.5ft (Ensign Rig #136 - RKB - 12.5')
<b>Well:</b>	Gutteresen 31T-301	<b>North Reference:</b>	True
<b>Wellbore:</b>	Wellbore #1	<b>Survey Calculation Method:</b>	Minimum Curvature
<b>Design:</b>	Wellbore #1	<b>Database:</b>	Landmark

Survey									
Measured Depth (ft)	Inclination (°)	Azimuth (°)	Vertical Depth (ft)	+N/-S (ft)	+E/-W (ft)	Vertical Section (ft)	Dogleg Rate (°/100ft)	Build Rate (°/100ft)	Turn Rate (°/100ft)
675.0	6.70	100.10	673.7	-8.3	35.5	-4.2	1.60	1.43	-6.92
767.0	8.40	94.40	764.9	-9.7	47.4	-4.3	2.02	1.85	-6.20
857.0	8.60	94.30	853.9	-10.7	60.7	-3.8	0.22	0.22	-0.11
888.0	9.00	94.80	884.6	-11.1	65.4	-3.6	1.31	1.29	1.61
961.0	10.10	97.40	956.5	-12.4	77.5	-3.6	1.62	1.51	3.56
1,052.0	9.80	94.40	1,046.2	-14.0	93.1	-3.4	0.66	-0.33	-3.30
1,143.0	9.80	97.20	1,135.8	-15.6	108.5	-3.2	0.52	0.00	3.08
1,234.0	11.30	90.20	1,225.3	-16.6	125.1	-2.3	2.17	1.65	-7.69
1,325.0	10.90	88.60	1,314.6	-16.4	142.6	-0.2	0.55	-0.44	-1.76
1,416.0	9.10	86.90	1,404.2	-15.8	158.4	2.2	2.00	-1.98	-1.87
1,506.0	6.00	86.90	1,493.4	-15.2	170.2	4.2	3.44	-3.44	0.00
1,597.0	6.00	89.90	1,583.9	-14.9	179.7	5.6	0.34	0.00	3.30
1,688.0	6.20	89.00	1,674.4	-14.8	189.4	6.7	0.24	0.22	-0.99
1,779.0	4.90	79.00	1,765.0	-14.0	198.1	8.6	1.78	-1.43	-10.99
1,870.0	5.90	93.00	1,855.6	-13.5	206.6	10.0	1.81	1.10	15.38
1,960.0	6.80	99.90	1,945.0	-14.7	216.5	10.0	1.31	1.00	7.67
2,051.0	9.80	94.80	2,035.1	-16.2	229.5	9.9	3.39	3.30	-5.60
2,142.0	11.40	76.50	2,124.5	-14.8	246.0	13.2	4.07	1.76	-20.11
2,236.0	8.90	76.50	2,217.1	-10.9	262.1	18.9	2.66	-2.66	0.00
2,331.0	8.30	83.90	2,311.0	-8.5	276.0	22.9	1.32	-0.63	7.79
2,426.0	7.00	95.10	2,405.2	-8.3	288.6	24.5	2.08	-1.37	11.79
2,522.0	6.40	89.50	2,500.5	-8.7	299.8	25.3	0.92	-0.63	-5.83
2,617.0	6.20	95.30	2,594.9	-9.2	310.2	26.1	0.70	-0.21	6.11
2,712.0	7.20	93.40	2,689.3	-10.0	321.3	26.5	1.08	1.05	-2.00
2,807.0	6.50	93.90	2,783.6	-10.7	332.6	27.1	0.74	-0.74	0.53
2,902.0	7.40	92.50	2,877.9	-11.3	344.0	27.7	0.96	0.95	-1.47
2,998.0	6.90	89.00	2,973.2	-11.5	356.0	28.9	0.69	-0.52	-3.65
3,092.0	8.10	98.30	3,066.4	-12.4	368.2	29.5	1.81	1.28	9.89
3,187.0	8.10	80.40	3,160.4	-12.2	381.4	31.1	2.64	0.00	-18.84
3,282.0	6.30	88.30	3,254.7	-10.9	393.2	33.7	2.16	-1.89	8.32
3,377.0	6.30	93.50	3,349.1	-11.1	403.6	34.7	0.60	0.00	5.47
3,472.0	6.40	101.40	3,443.5	-12.5	414.0	34.6	0.93	0.11	8.32
3,568.0	6.70	95.70	3,538.9	-14.1	424.8	34.2	0.75	0.31	-5.94
3,663.0	6.80	93.40	3,633.2	-15.0	436.0	34.6	0.30	0.11	-2.42
3,757.0	6.30	92.00	3,726.6	-15.5	446.7	35.3	0.56	-0.53	-1.49
3,852.0	6.90	97.90	3,821.0	-16.5	457.5	35.5	0.95	0.63	6.21
3,948.0	8.60	92.00	3,916.1	-17.5	470.4	36.0	1.95	1.77	-6.15
4,042.0	8.40	91.40	4,009.1	-17.9	484.3	37.1	0.23	-0.21	-0.64
4,137.0	7.70	89.10	4,103.1	-18.0	497.6	38.6	0.81	-0.74	-2.42
4,233.0	7.40	90.60	4,198.3	-17.9	510.2	40.0	0.37	-0.31	1.56
4,328.0	9.70	90.90	4,292.2	-18.1	524.4	41.5	2.42	2.42	0.32
4,423.0	9.00	90.40	4,386.0	-18.3	539.8	43.0	0.74	-0.74	-0.53
4,518.0	8.40	87.20	4,479.9	-18.0	554.1	44.9	0.81	-0.63	-3.37
4,613.0	8.00	84.90	4,573.9	-17.1	567.7	47.4	0.54	-0.42	-2.42
4,708.0	6.20	93.40	4,668.2	-16.8	579.4	49.0	2.19	-1.89	8.95
4,803.0	4.90	103.60	4,762.7	-18.1	588.4	48.8	1.71	-1.37	10.74
4,899.0	2.60	112.70	4,858.5	-19.9	594.4	47.7	2.47	-2.40	9.48
4,994.0	0.70	341.60	4,953.5	-20.2	596.2	47.6	3.27	-2.00	-138.00
5,089.0	0.80	317.70	5,048.5	-19.1	595.6	48.6	0.34	0.11	-25.16
5,184.0	1.10	340.70	5,143.5	-17.8	594.9	49.8	0.50	0.32	24.21
5,279.0	1.30	311.00	5,238.5	-16.2	593.7	51.2	0.68	0.21	-31.26

<b>Company:</b>	PETROLEUM DEVELOPMENT CORP Weld County CO	<b>Local Co-ordinate Reference:</b>	Well Gutteresen 31T-301
<b>Project:</b>	SEC.31-T3N-R63W	<b>TVD Reference:</b>	WELL @ 4835.5ft (Ensign Rig #136 - RKB - 12.5')
<b>Site:</b>	Gutteresen 31Q-401 Pad Sec.31-T3N-R63W	<b>MD Reference:</b>	WELL @ 4835.5ft (Ensign Rig #136 - RKB - 12.5')
<b>Well:</b>	Gutteresen 31T-301	<b>North Reference:</b>	True
<b>Wellbore:</b>	Wellbore #1	<b>Survey Calculation Method:</b>	Minimum Curvature
<b>Design:</b>	Wellbore #1	<b>Database:</b>	Landmark

Survey									
Measured Depth (ft)	Inclination (°)	Azimuth (°)	Vertical Depth (ft)	+N/-S (ft)	+E/-W (ft)	Vertical Section (ft)	Dogleg Rate (°/100ft)	Build Rate (°/100ft)	Turn Rate (°/100ft)
5,375.0	1.10	352.60	5,334.4	-14.6	592.8	52.8	0.91	-0.21	43.33
5,470.0	1.40	317.30	5,429.4	-12.8	591.9	54.4	0.85	0.32	-37.16
5,565.0	0.90	308.30	5,524.4	-11.5	590.5	55.6	0.56	-0.53	-9.47
5,660.0	1.30	315.00	5,619.4	-10.3	589.2	56.6	0.44	0.42	7.05
5,692.0	1.20	331.70	5,651.4	-9.7	588.8	57.1	1.18	-0.31	52.19
5,724.0	2.40	354.60	5,683.4	-8.8	588.5	58.0	4.30	3.75	71.56
5,755.0	4.00	7.10	5,714.3	-7.0	588.6	59.8	5.60	5.16	40.32
5,787.0	5.50	10.80	5,746.2	-4.4	589.0	62.4	4.78	4.69	11.56
5,819.0	7.10	10.00	5,778.0	-1.0	589.7	65.9	5.01	5.00	-2.50
5,851.0	9.10	7.80	5,809.7	3.5	590.4	70.4	6.32	6.25	-6.88
5,882.0	10.60	7.40	5,840.2	8.7	591.1	75.7	4.84	4.84	-1.29
5,914.0	11.80	5.80	5,871.6	14.9	591.8	81.9	3.87	3.75	-5.00
5,946.0	12.00	7.90	5,902.9	21.5	592.6	88.5	1.49	0.63	6.56
5,978.0	12.50	7.90	5,934.2	28.2	593.5	95.3	1.56	1.56	0.00
6,009.0	13.30	3.20	5,964.4	35.1	594.1	102.2	4.25	2.58	-15.16
6,041.0	15.70	2.10	5,995.4	43.1	594.5	110.2	7.55	7.50	-3.44
6,073.0	18.30	0.00	6,026.0	52.4	594.7	119.5	8.35	8.13	-6.56
6,105.0	20.10	0.40	6,056.2	63.0	594.7	130.0	5.64	5.63	1.25
6,136.0	21.50	358.40	6,085.2	74.0	594.6	140.9	5.06	4.52	-6.45
6,168.0	22.10	358.80	6,114.9	85.8	594.3	152.7	1.93	1.88	1.25
6,200.0	23.10	359.10	6,144.5	98.1	594.1	164.9	3.15	3.13	0.94
6,232.0	25.30	357.00	6,173.6	111.2	593.6	177.8	7.38	6.88	-6.56
6,263.0	27.20	355.80	6,201.4	124.9	592.7	191.3	6.36	6.13	-3.87
6,295.0	28.60	355.30	6,229.7	139.9	591.6	206.0	4.44	4.38	-1.56
6,327.0	30.40	356.90	6,257.6	155.6	590.5	221.5	6.14	5.63	5.00
6,359.0	32.00	357.70	6,284.9	172.1	589.7	237.9	5.16	5.00	2.50
6,390.0	33.20	0.20	6,311.1	188.8	589.4	254.5	5.82	3.87	8.06
6,422.0	34.10	359.00	6,337.7	206.6	589.3	272.1	3.50	2.81	-3.75
6,454.0	36.30	359.90	6,363.8	225.0	589.1	290.4	7.06	6.88	2.81
6,486.0	39.50	358.80	6,389.1	244.7	588.9	309.9	10.22	10.00	-3.44
6,517.0	42.60	358.60	6,412.5	265.0	588.4	330.0	10.01	10.00	-0.65
6,549.0	43.50	0.20	6,435.9	286.8	588.2	351.7	4.42	2.81	5.00
6,581.0	44.40	0.40	6,458.9	309.1	588.3	373.8	2.85	2.81	0.63
6,613.0	44.70	1.10	6,481.7	331.5	588.6	396.1	1.80	0.94	2.19
6,644.0	45.80	1.80	6,503.5	353.5	589.2	418.0	3.89	3.55	2.26
6,676.0	47.30	0.40	6,525.5	376.7	589.6	441.2	5.66	4.69	-4.38
6,708.0	50.30	359.90	6,546.6	400.8	589.7	465.1	9.45	9.38	-1.56
6,740.0	53.00	359.30	6,566.5	425.9	589.5	490.0	8.56	8.44	-1.88
6,771.0	56.70	358.30	6,584.3	451.2	589.0	515.1	12.22	11.94	-3.23
6,803.0	59.30	358.30	6,601.3	478.4	588.2	542.0	8.13	8.13	0.00
6,835.0	62.50	358.60	6,616.8	506.3	587.4	569.7	10.03	10.00	0.94
6,866.0	64.70	358.40	6,630.6	534.1	586.7	597.2	7.12	7.10	-0.65
6,898.0	67.00	359.00	6,643.7	563.3	586.0	626.1	7.39	7.19	1.88
6,930.0	68.60	358.60	6,655.8	592.9	585.4	655.4	5.13	5.00	-1.25
6,962.0	69.80	358.40	6,667.1	622.8	584.6	685.1	3.80	3.75	-0.63
6,994.0	71.20	359.50	6,677.8	652.9	584.1	715.0	5.44	4.38	3.44
7,025.0	73.20	359.90	6,687.3	682.4	583.9	744.3	6.57	6.45	1.29
7,057.0	75.20	1.30	6,696.0	713.2	584.2	774.9	7.54	6.25	4.38
7,089.0	77.70	2.50	6,703.5	744.3	585.3	805.9	8.62	7.81	3.75
7,121.0	80.80	1.30	6,709.5	775.7	586.3	837.2	10.36	9.69	-3.75
7,133.0	82.90	0.70	6,711.2	787.6	586.5	849.1	18.19	17.50	-5.00
7,192.0	86.90	0.20	6,716.4	846.4	587.0	907.5	6.83	6.78	-0.85

<b>Company:</b>	PETROLEUM DEVELOPMENT CORP Weld County CO	<b>Local Co-ordinate Reference:</b>	Well Gutteresen 31T-301
<b>Project:</b>	SEC.31-T3N-R63W	<b>TVD Reference:</b>	WELL @ 4835.5ft (Ensign Rig #136 - RKB - 12.5')
<b>Site:</b>	Gutteresen 31Q-401 Pad Sec.31-T3N-R63W	<b>MD Reference:</b>	WELL @ 4835.5ft (Ensign Rig #136 - RKB - 12.5')
<b>Well:</b>	Gutteresen 31T-301	<b>North Reference:</b>	True
<b>Wellbore:</b>	Wellbore #1	<b>Survey Calculation Method:</b>	Minimum Curvature
<b>Design:</b>	Wellbore #1	<b>Database:</b>	Landmark

Survey									
Measured Depth (ft)	Inclination (°)	Azimuth (°)	Vertical Depth (ft)	+N/-S (ft)	+E/-W (ft)	Vertical Section (ft)	Dogleg Rate (°/100ft)	Build Rate (°/100ft)	Turn Rate (°/100ft)
7,261.0	88.50	0.40	6,719.2	915.3	587.3	976.0	2.34	2.32	0.29
7,351.0	88.80	359.50	6,721.3	1,005.3	587.3	1,065.4	1.05	0.33	-1.00
7,442.0	90.30	357.00	6,722.0	1,096.2	584.5	1,155.4	3.20	1.65	-2.75
7,534.0	89.20	355.60	6,722.4	1,188.0	578.6	1,246.0	1.94	-1.20	-1.52
7,624.0	90.00	355.60	6,723.1	1,277.8	571.7	1,334.4	0.89	0.89	0.00
7,715.0	92.20	356.50	6,721.3	1,368.5	565.4	1,423.8	2.61	2.42	0.99
7,806.0	91.20	355.80	6,718.6	1,459.3	559.3	1,513.3	1.34	-1.10	-0.77
7,897.0	91.30	358.10	6,716.6	1,550.1	554.4	1,603.0	2.53	0.11	2.53
7,992.0	91.00	359.10	6,714.7	1,645.1	552.1	1,697.1	1.10	-0.32	1.05
8,087.0	90.70	0.40	6,713.3	1,740.1	551.7	1,791.4	1.40	-0.32	1.37
8,182.0	90.70	359.90	6,712.2	1,835.1	551.9	1,885.8	0.53	0.00	-0.53
8,278.0	89.50	0.70	6,712.0	1,931.0	552.5	1,981.2	1.50	-1.25	0.83
8,373.0	90.60	2.00	6,711.9	2,026.0	554.7	2,075.9	1.79	1.16	1.37
8,518.0	89.50	359.30	6,711.8	2,171.0	556.3	2,220.1	2.01	-0.76	-1.86
8,563.0	89.00	1.10	6,712.4	2,216.0	556.5	2,264.8	4.15	-1.11	4.00
8,659.0	89.80	1.10	6,713.4	2,312.0	558.3	2,360.4	0.83	0.83	0.00
8,754.0	89.90	2.50	6,713.6	2,406.9	561.3	2,455.0	1.48	0.11	1.47
8,848.0	89.90	2.30	6,713.8	2,500.8	565.3	2,548.8	0.21	0.00	-0.21
8,943.0	90.20	2.80	6,713.7	2,595.7	569.5	2,643.6	0.61	0.32	0.53
9,038.0	91.20	2.10	6,712.5	2,690.6	573.5	2,738.3	1.28	1.05	-0.74
9,133.0	89.40	358.40	6,712.0	2,785.6	574.0	2,832.7	4.33	-1.89	-3.89
9,228.0	90.70	359.70	6,712.0	2,880.6	572.4	2,926.9	1.94	1.37	1.37
9,324.0	90.80	359.30	6,710.7	2,976.6	571.5	3,022.2	0.43	0.10	-0.42
9,419.0	90.40	357.90	6,709.7	3,071.6	569.2	3,116.3	1.53	-0.42	-1.47
9,513.0	90.20	357.00	6,709.2	3,165.5	565.0	3,209.1	0.98	-0.21	-0.96
9,608.0	89.80	356.50	6,709.2	3,260.3	559.7	3,302.7	0.67	-0.42	-0.53
9,703.0	90.70	357.40	6,708.8	3,355.2	554.6	3,396.4	1.34	0.95	0.95
9,798.0	90.00	356.00	6,708.2	3,450.0	549.1	3,490.0	1.65	-0.74	-1.47
9,893.0	91.10	358.10	6,707.3	3,544.9	544.2	3,583.7	2.50	1.16	2.21
9,989.0	91.20	358.10	6,705.4	3,640.8	541.1	3,678.7	0.10	0.10	0.00
10,084.0	90.40	356.90	6,704.1	3,735.7	536.9	3,772.5	1.52	-0.84	-1.26
10,179.0	90.50	359.10	6,703.3	3,830.6	533.6	3,866.4	2.32	0.11	2.32
10,274.0	89.60	359.00	6,703.2	3,925.6	532.0	3,960.6	0.95	-0.95	-0.11
10,369.0	89.10	359.30	6,704.3	4,020.6	530.6	4,054.8	0.61	-0.53	0.32
10,464.0	90.00	359.70	6,705.0	4,115.6	529.8	4,149.1	1.04	0.95	0.42
10,559.0	89.80	358.30	6,705.2	4,210.6	528.1	4,243.3	1.49	-0.21	-1.47
10,655.0	89.30	358.80	6,706.0	4,306.5	525.7	4,338.4	0.74	-0.52	0.52
10,750.0	88.70	359.10	6,707.6	4,401.5	524.0	4,432.5	0.71	-0.63	0.32
10,845.0	90.20	0.20	6,708.5	4,496.5	523.4	4,526.8	1.96	1.58	1.16
10,940.0	90.10	359.50	6,708.3	4,591.5	523.1	4,621.2	0.74	-0.11	-0.74
10,991.0	89.80	359.70	6,708.3	4,642.5	522.8	4,671.8	0.71	-0.59	0.39
11,047.9	89.80	359.70	6,708.5	4,699.4	522.5	4,728.4	0.00	0.00	0.00
<b>BHL 500'FNL, 1495'FEL</b>									
11,048.0	89.80	359.70	6,708.5	4,699.5	522.5	4,728.4	0.00	0.00	0.00

Checked By: \_\_\_\_\_ Approved By: \_\_\_\_\_ Date: \_\_\_\_\_