



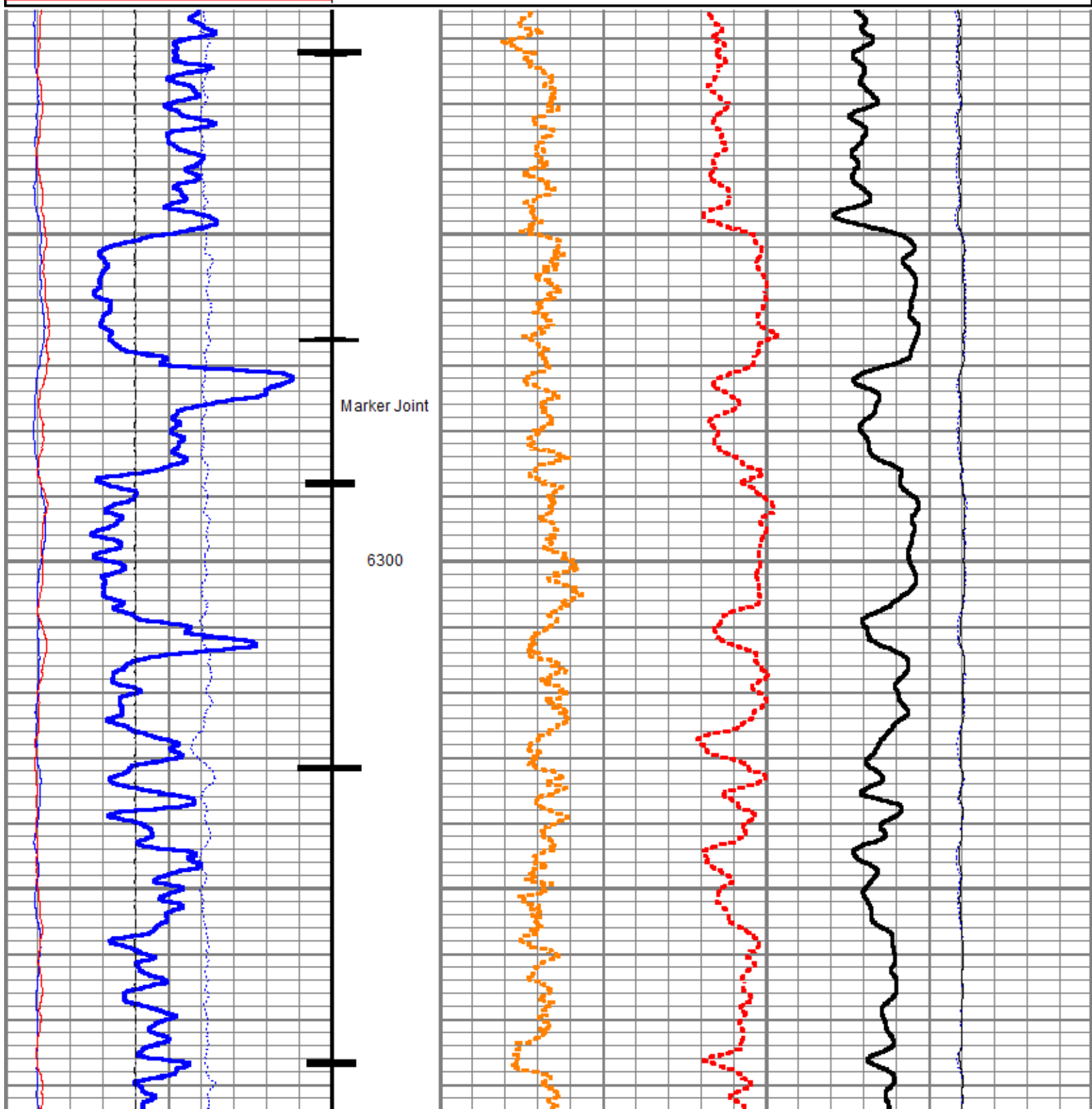
<<< Fold Here >>>
All interpretations are opinions based on inferences from electrical or other measurements and we cannot and do not guarantee the accuracy or correctness of any interpretation, and we shall not, except in the case of gross or willful negligence on our part, be liable or responsible for any loss, costs, damages, or expenses incurred or sustained by anyone resulting from any interpretation made by any of our officers, agents or employees. These interpretations are also subject to our general terms and conditions set out in our current Price Schedule.
Comments
<p>Log ran as per customer request Depth referenced to Reliance Bond Log dated 18-DEC-2018 Log ran from 10413 FT to 6216 FT Pulsed Neutron Data logged with the Hunter RAS Tool</p> <p>Thank you for choosing Reliance Oilfield Services, LLC!</p>

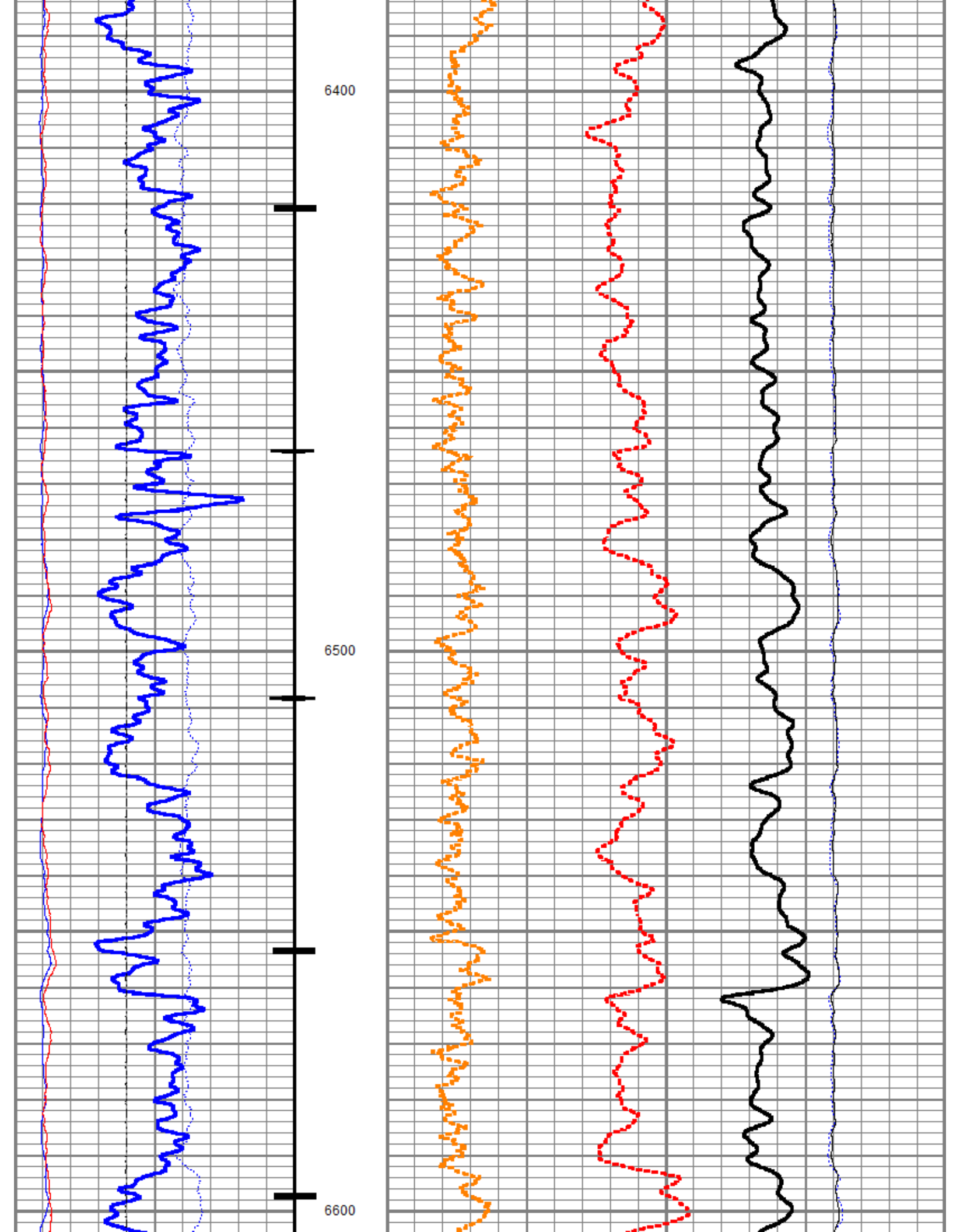


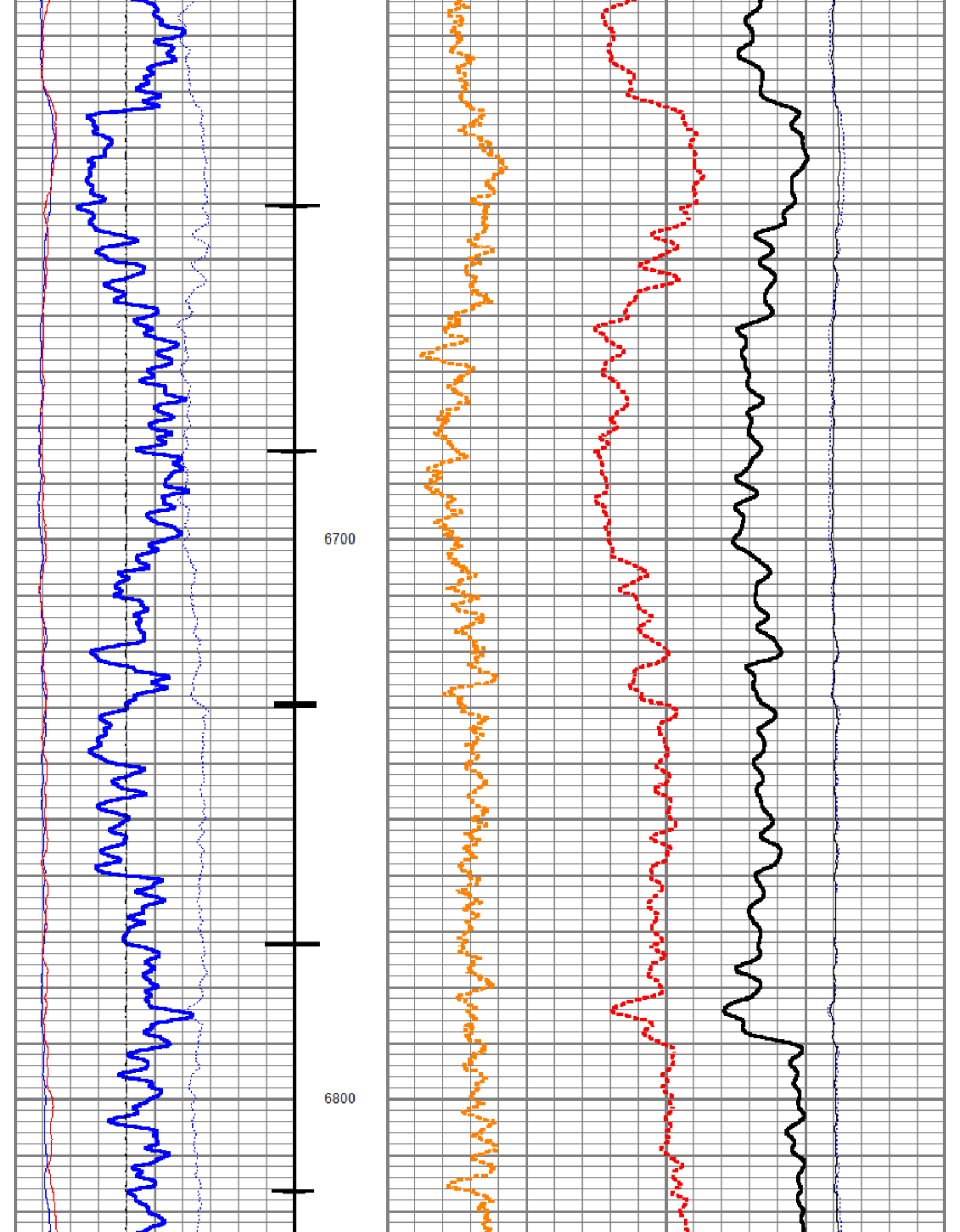
Database File	clough nr 44-3\pn\tep_clough_nr_44-3_pn_12-18-2018.db
Dataset Pathname	tep_clough_nr_44-3_pn_12-18-18_shift_ma
Presentation Format	ros_pdn_hunter
Dataset Creation	Fri Dec 21 14:42:58 2018
Charted by	Depth in Feet scaled 1:240

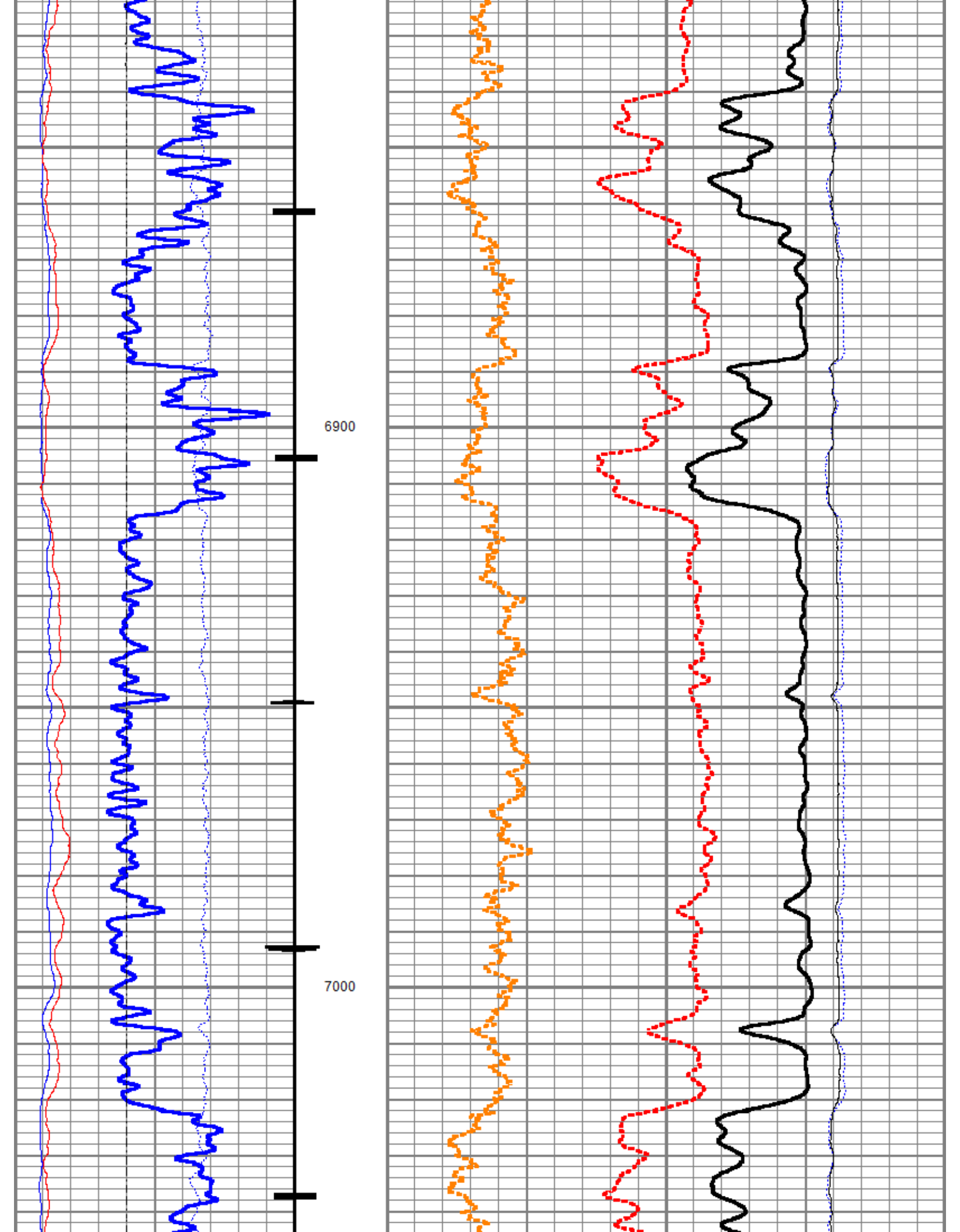
0	Gamma Ray (GAPI)	150
Casing Collar Locator		
-100	Line Speed (ft/min)	100
0	NIRS	400000
0	BKGN (cps)	4000
0	BKGF (cps)	2000

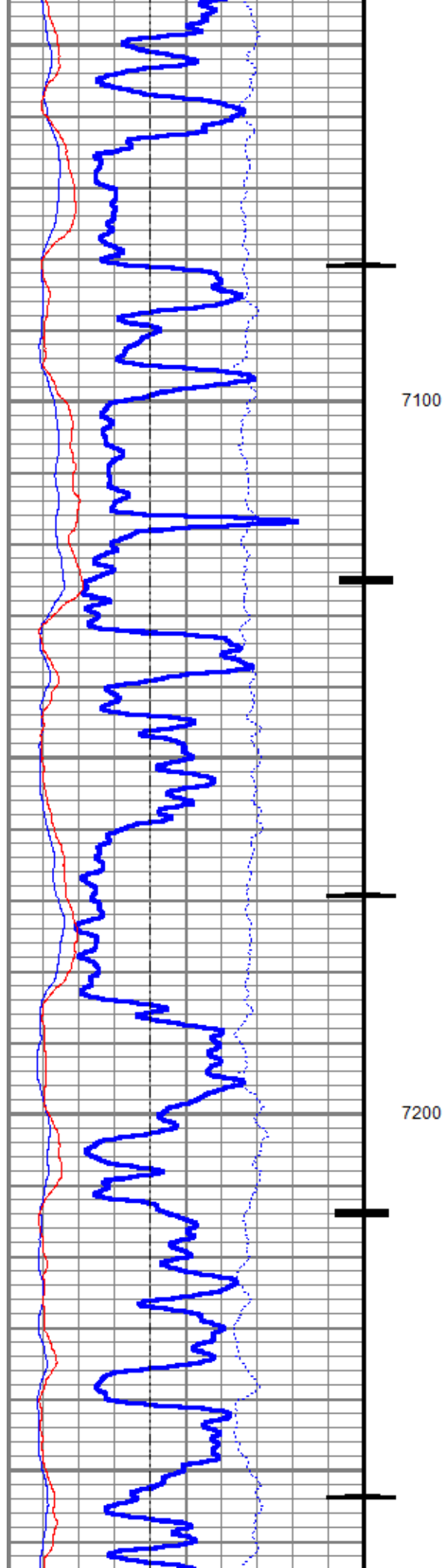
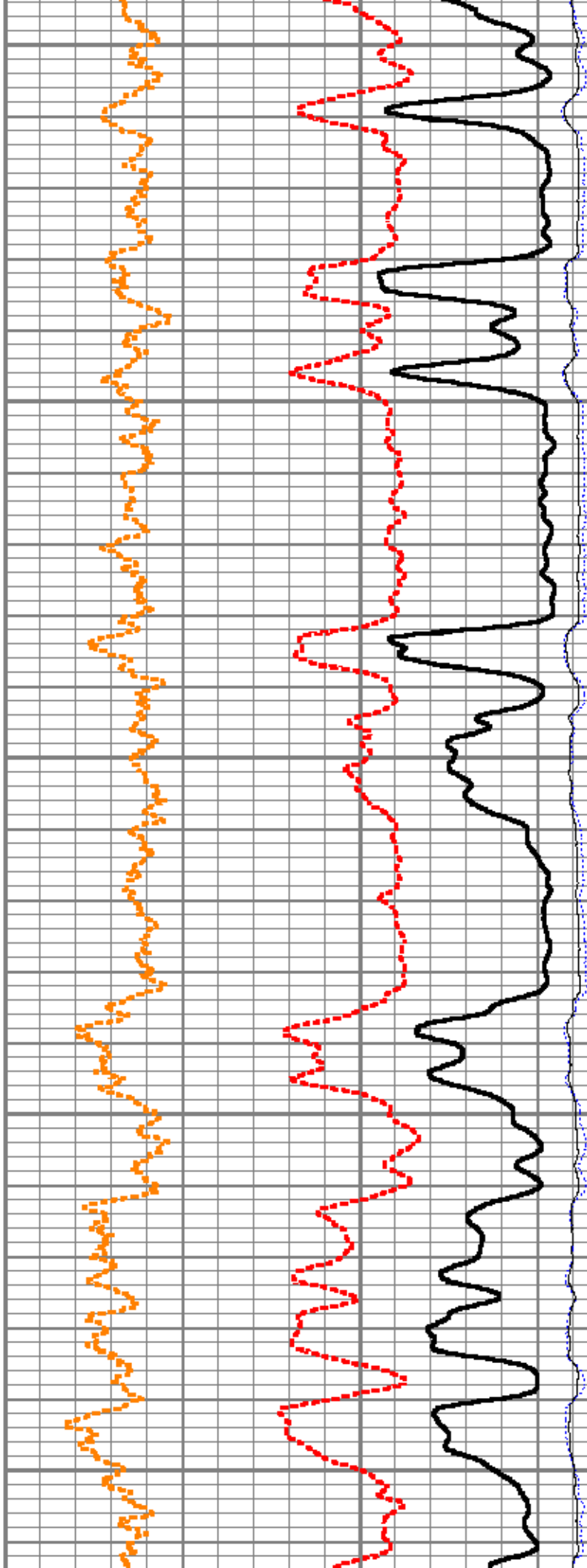
4	RNF2	0
60	SIGMA (cu)	0
4.5	RNFI	0
0	FIS2	45000
0	NIS2	100000

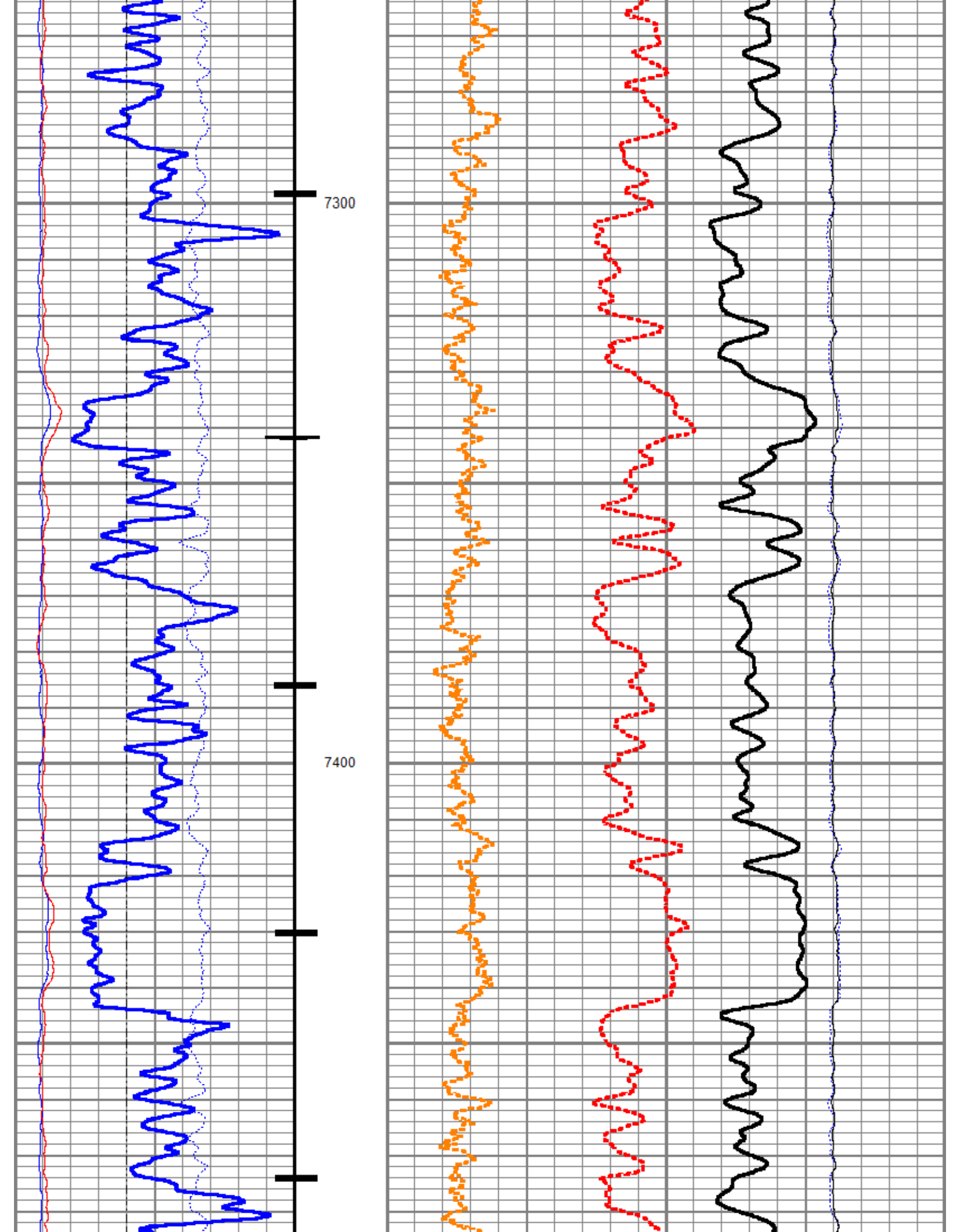


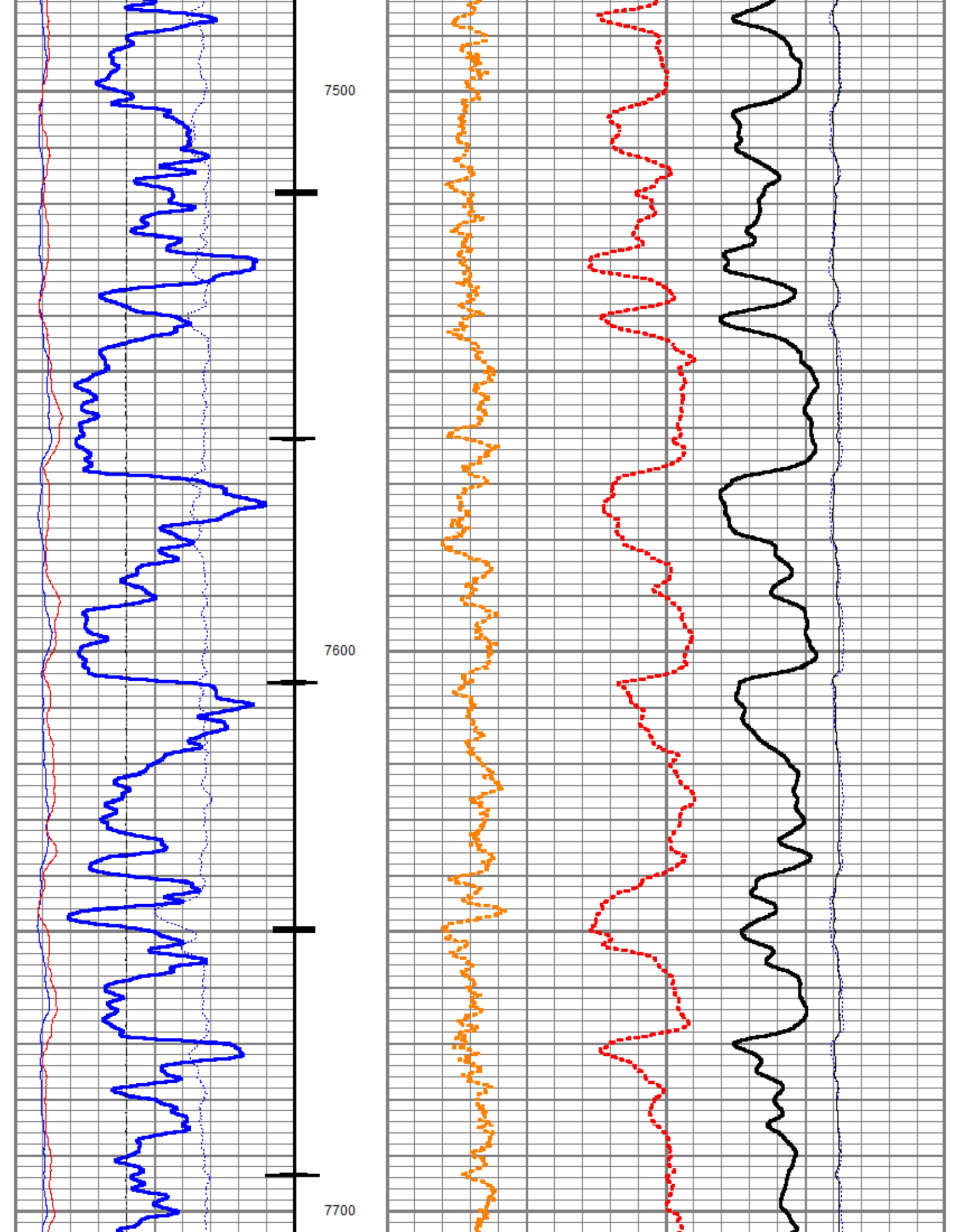


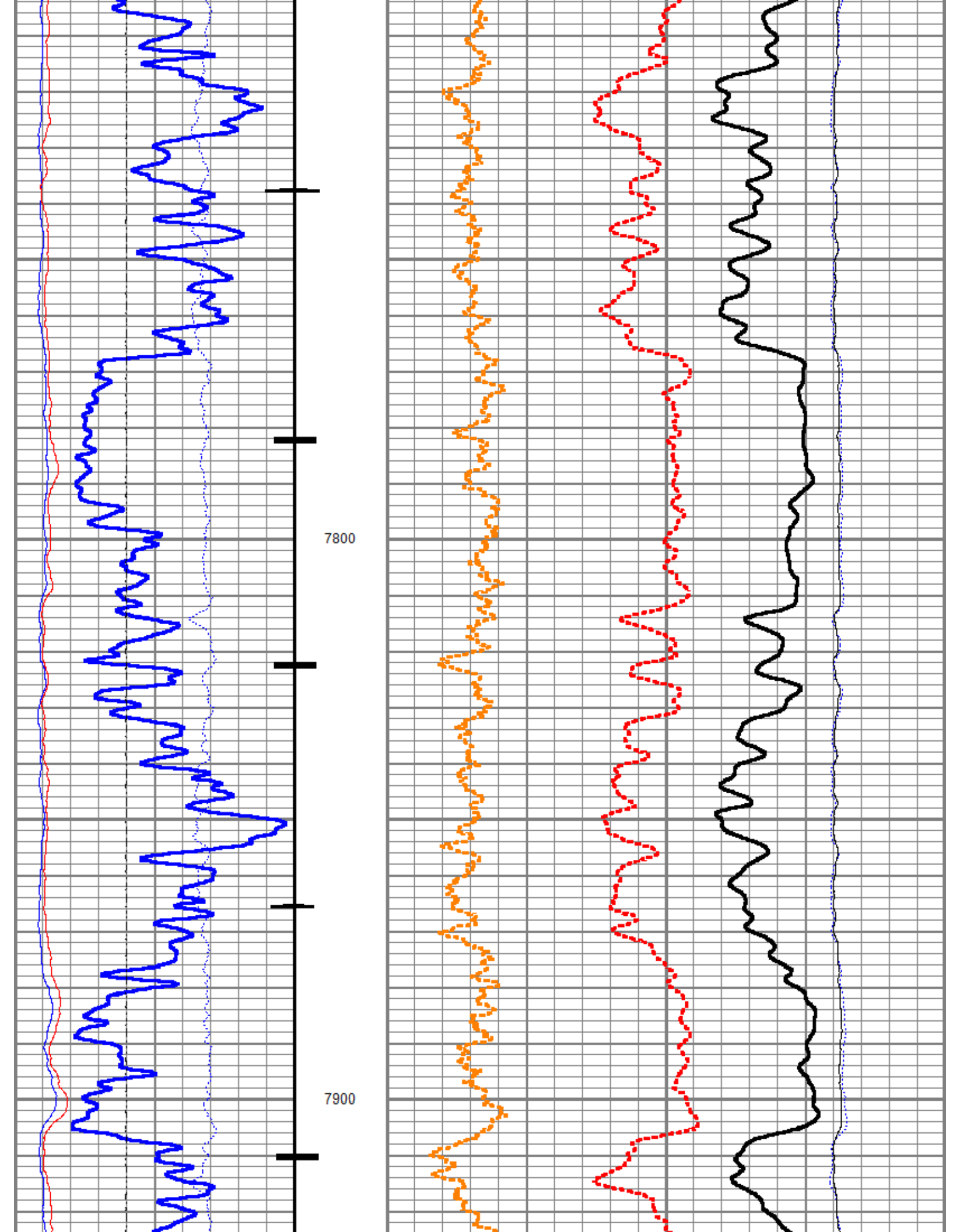


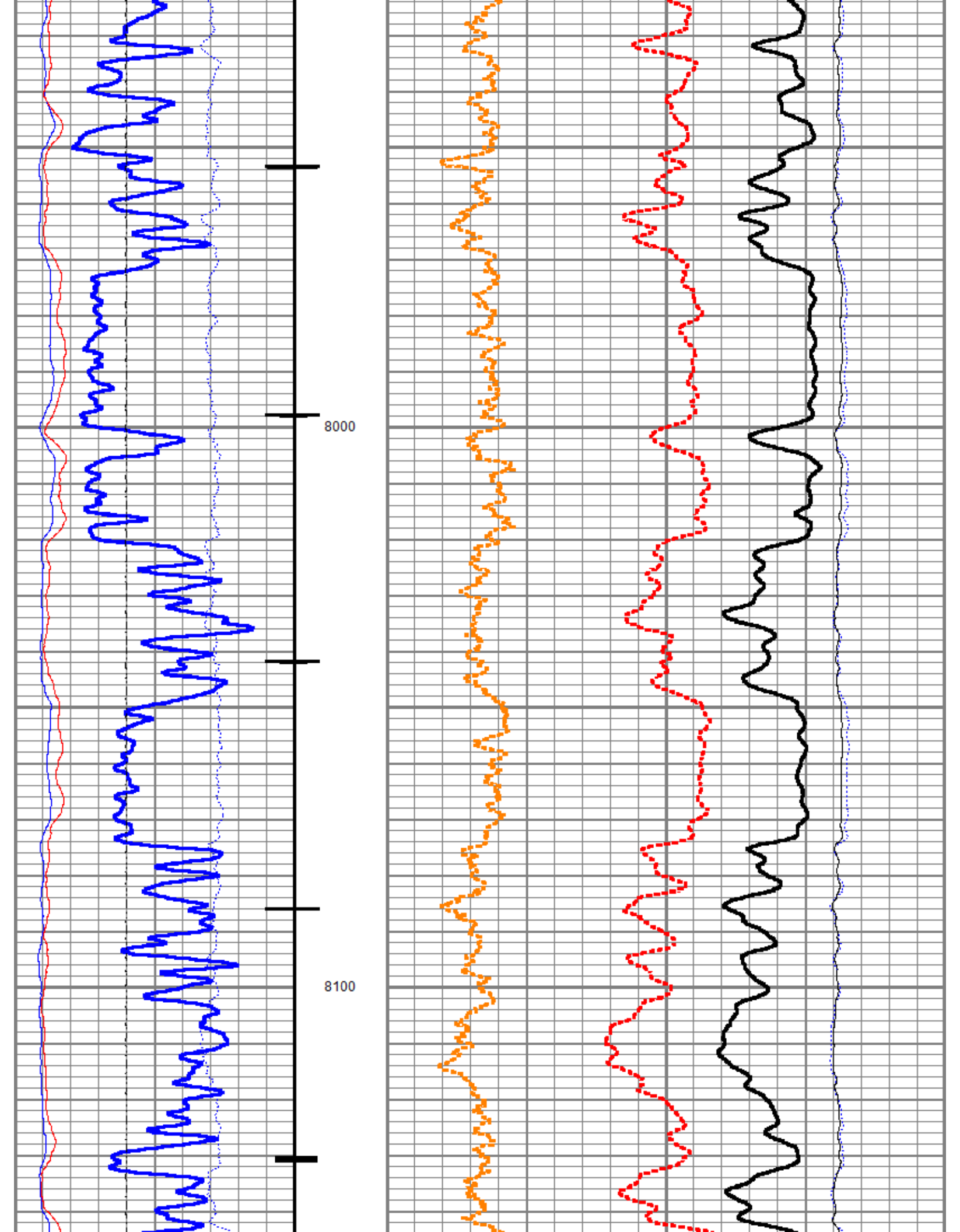


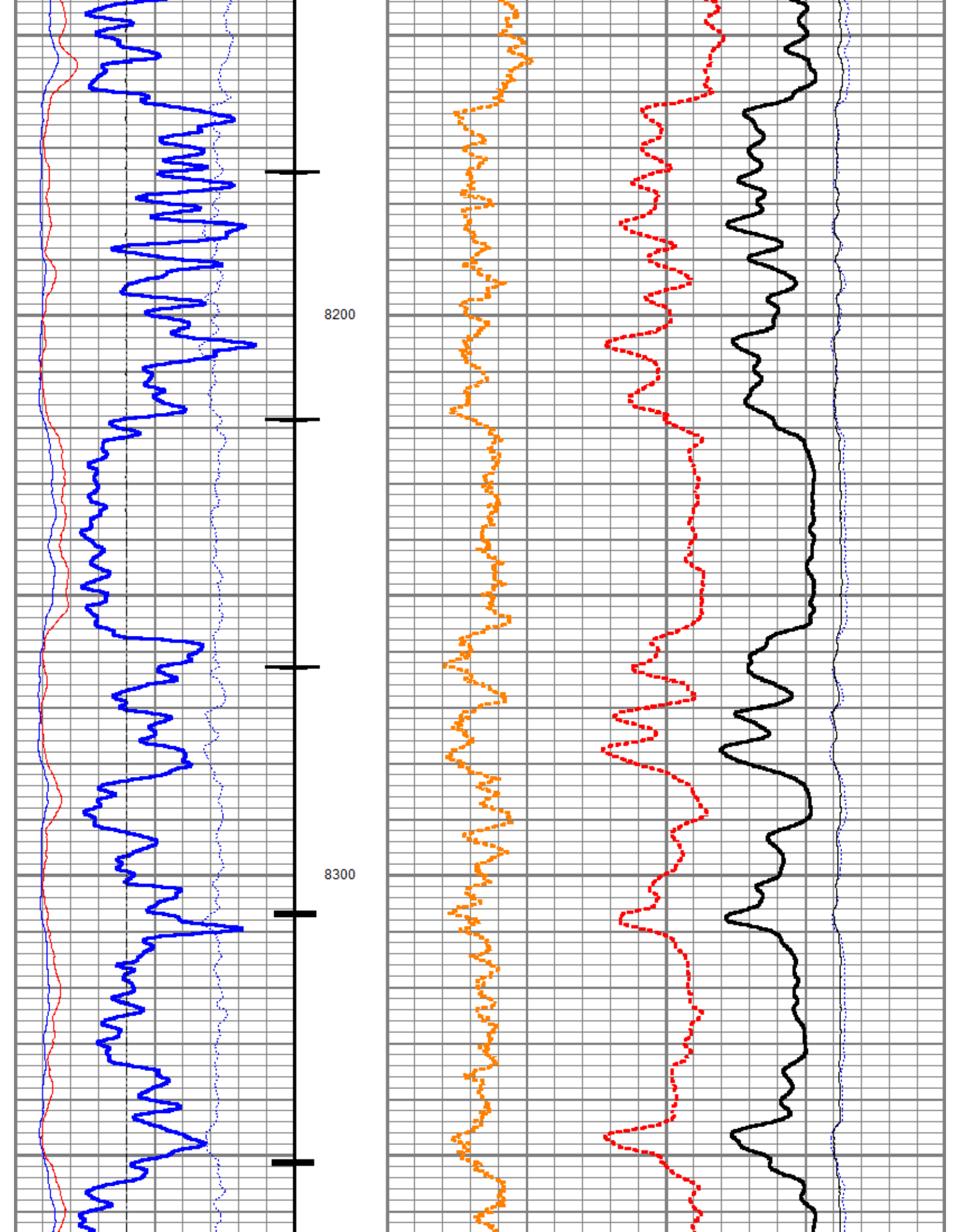


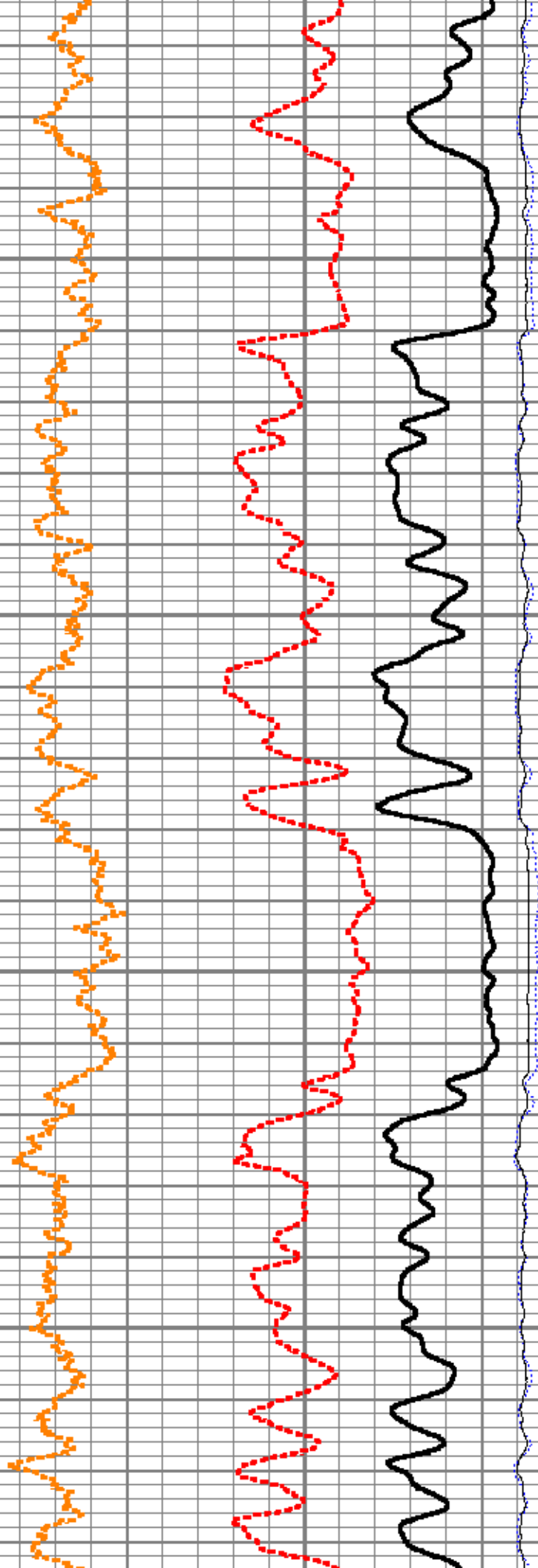
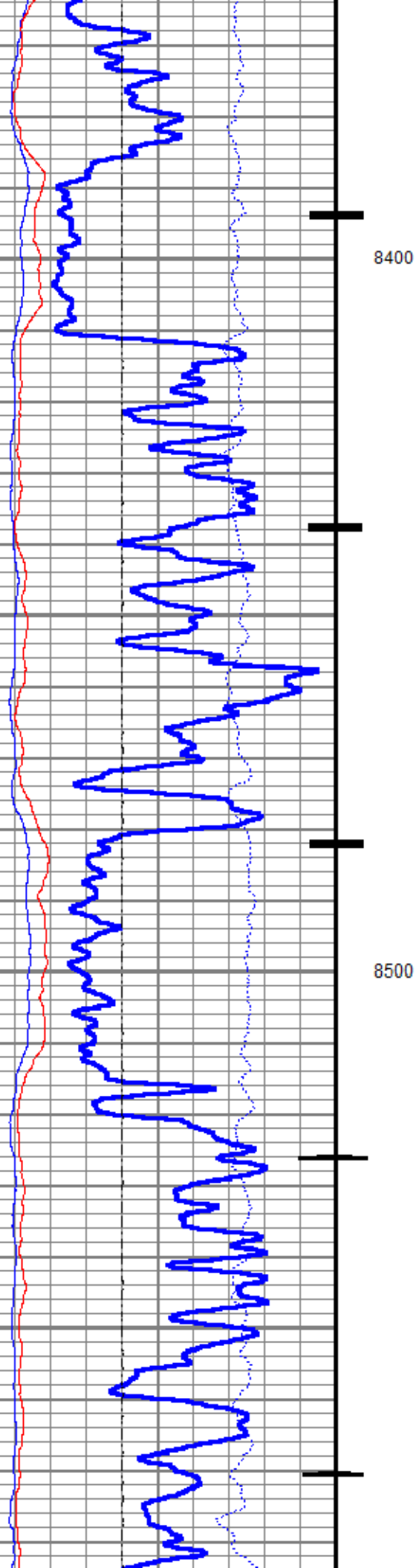


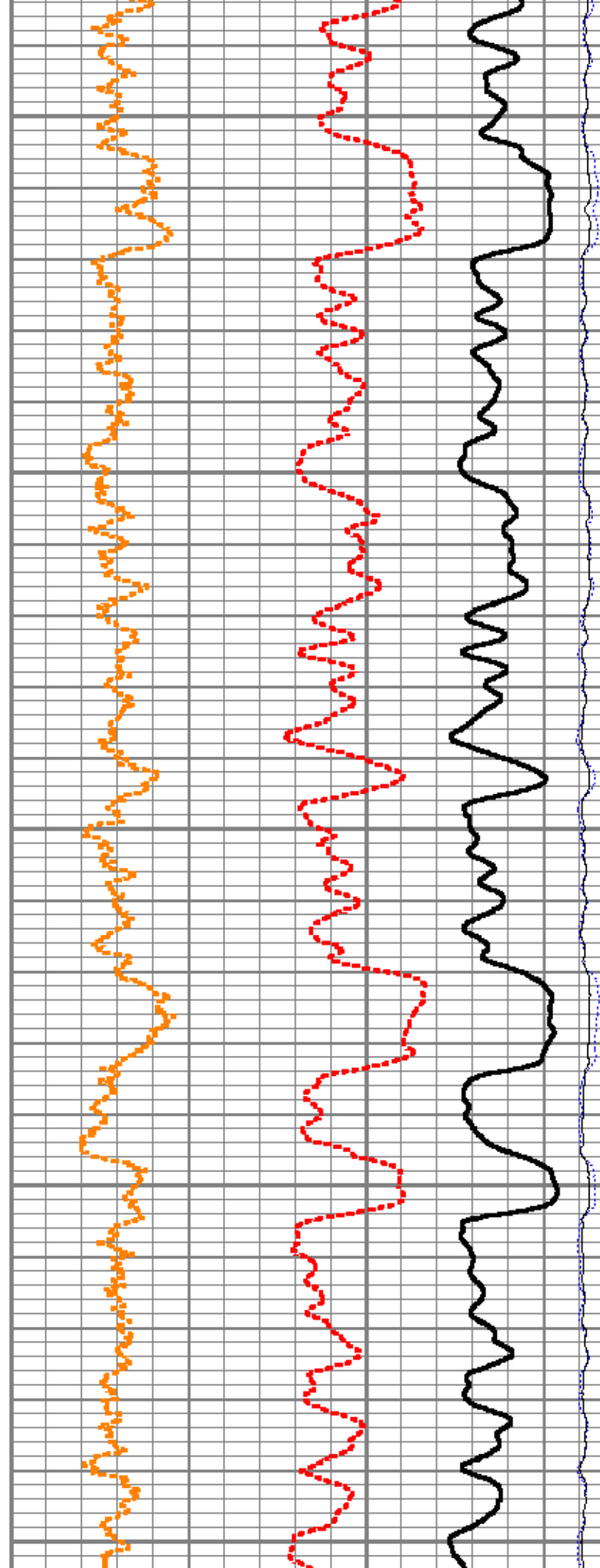
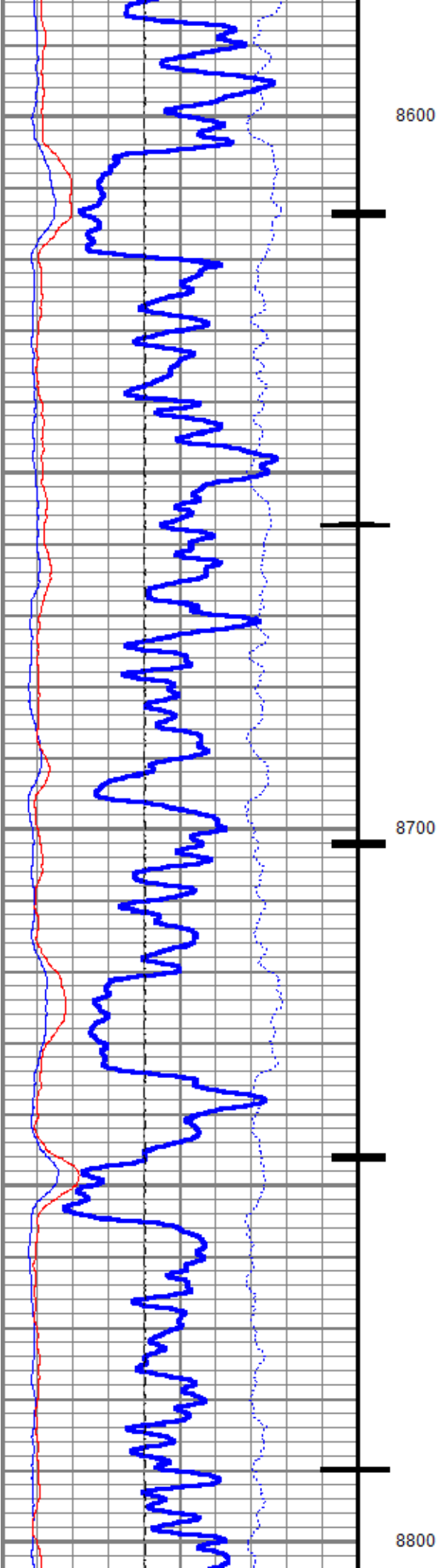


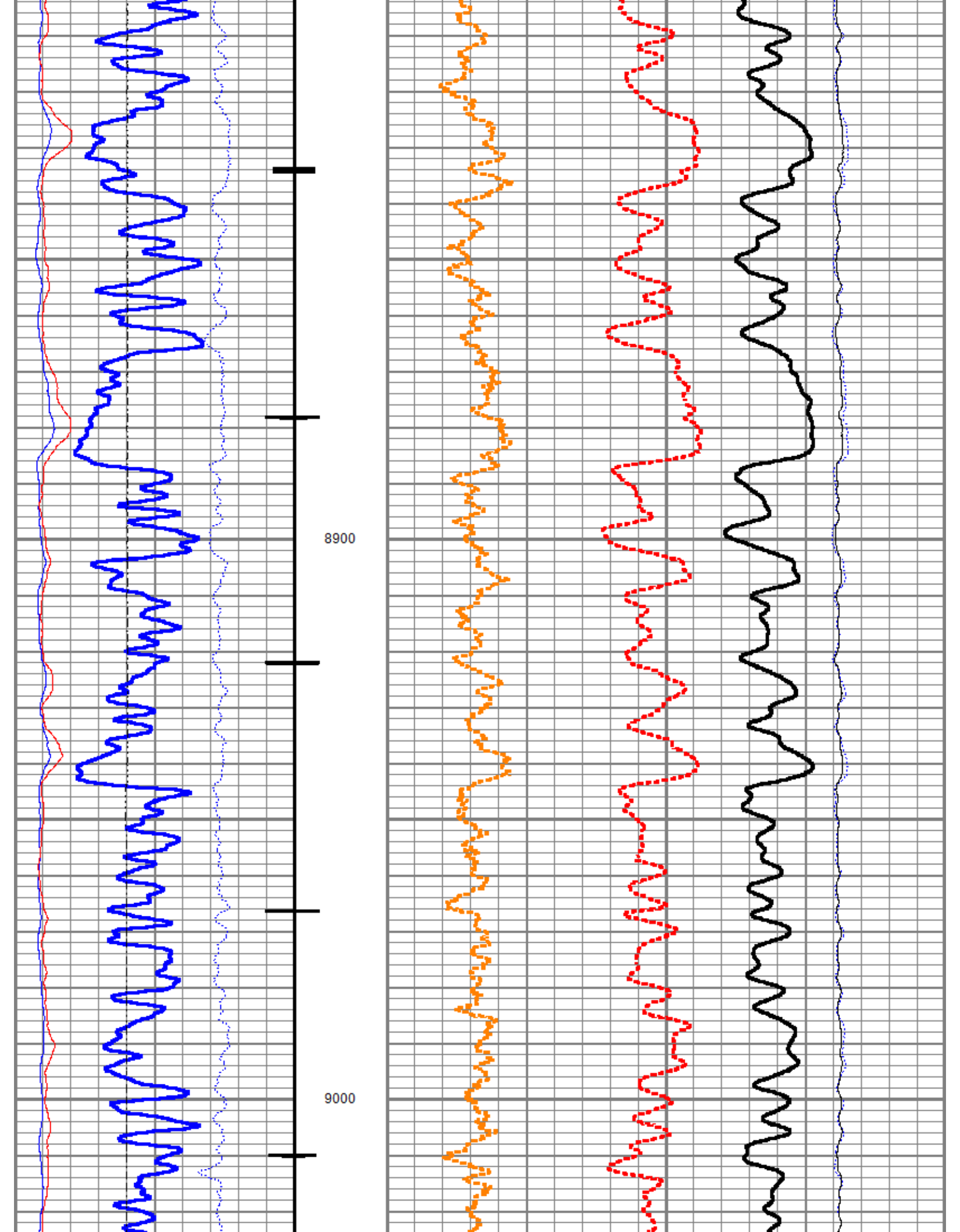


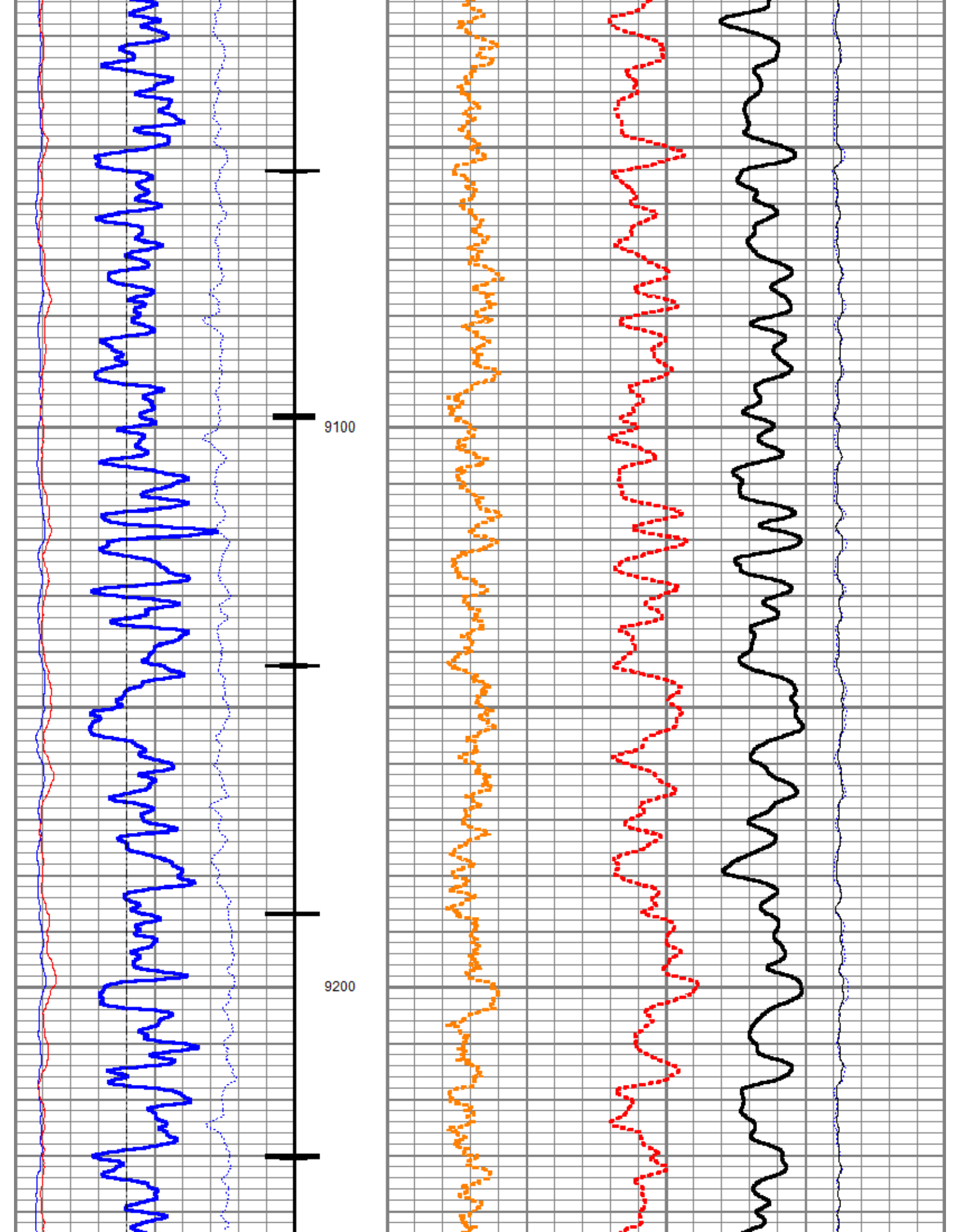


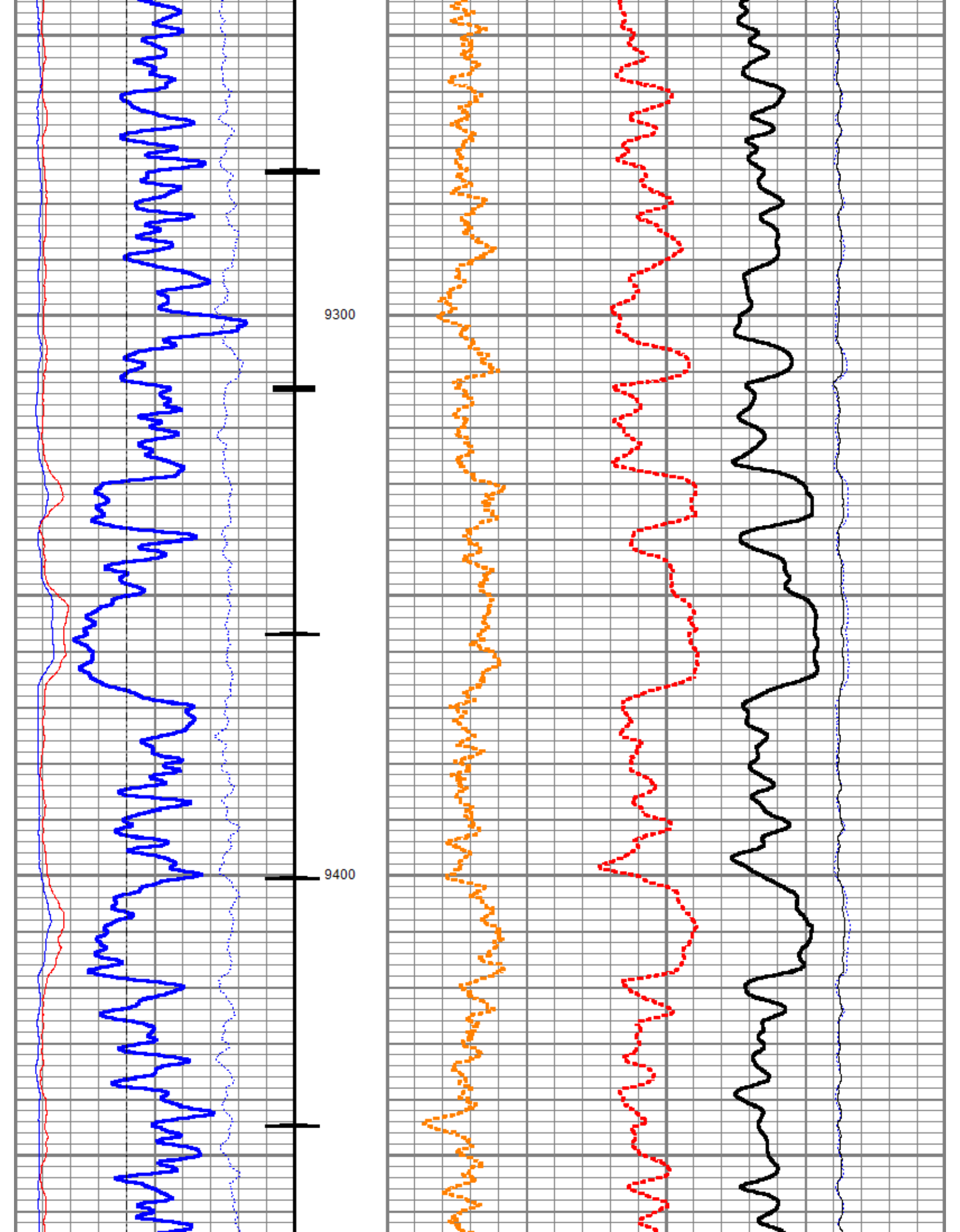


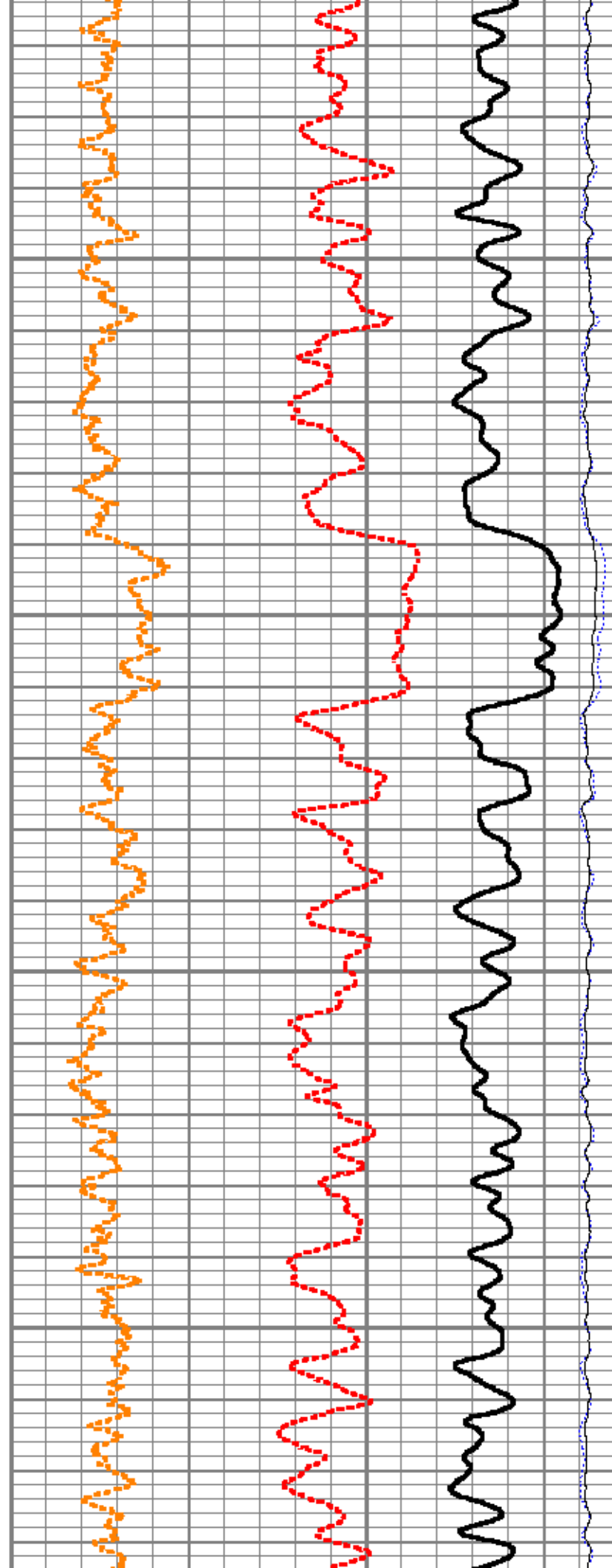
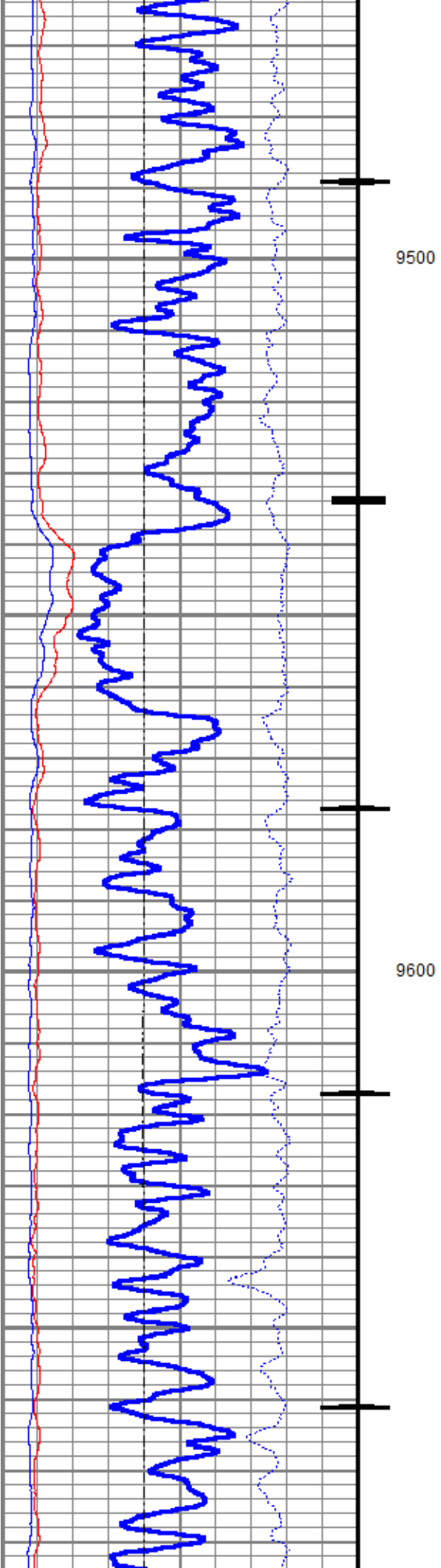


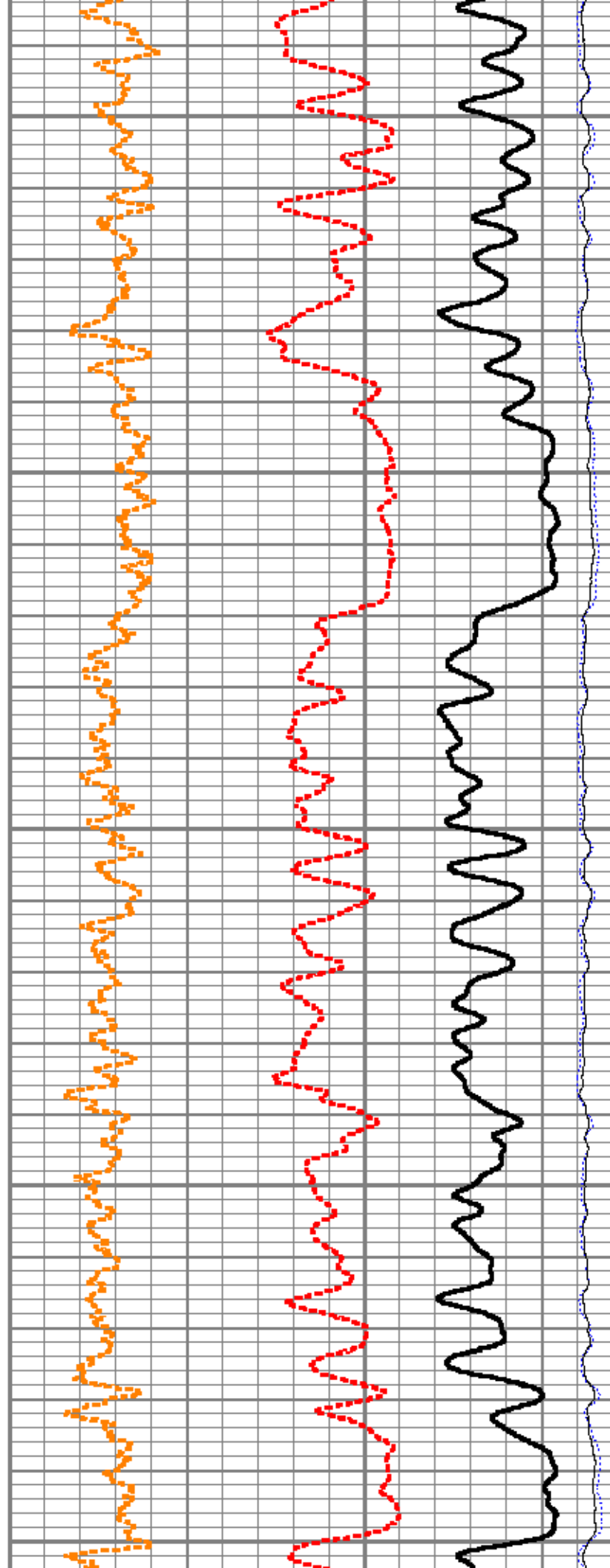
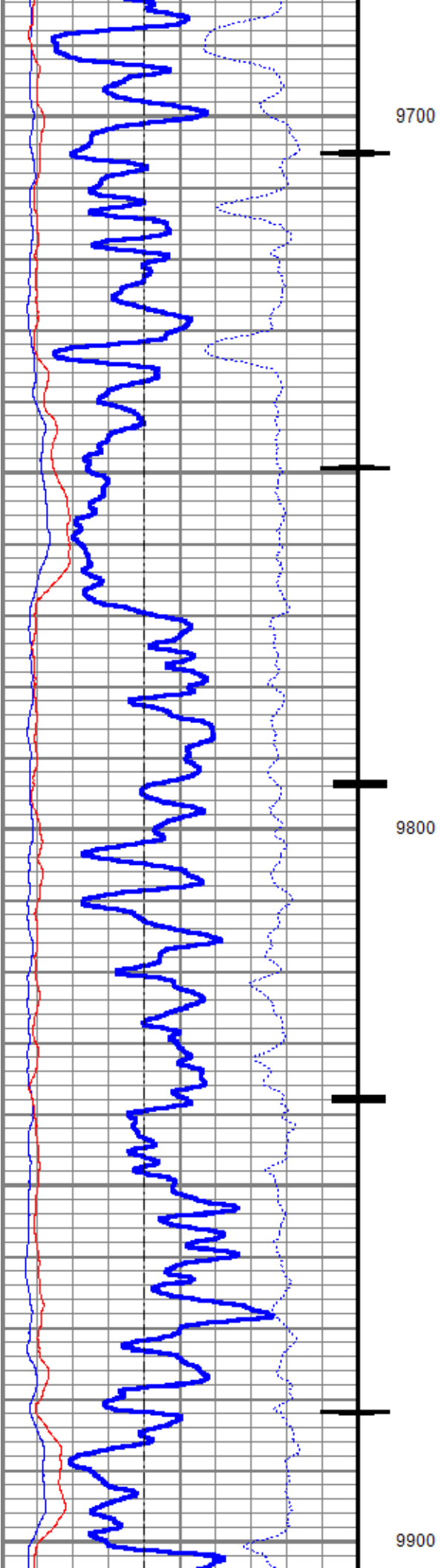


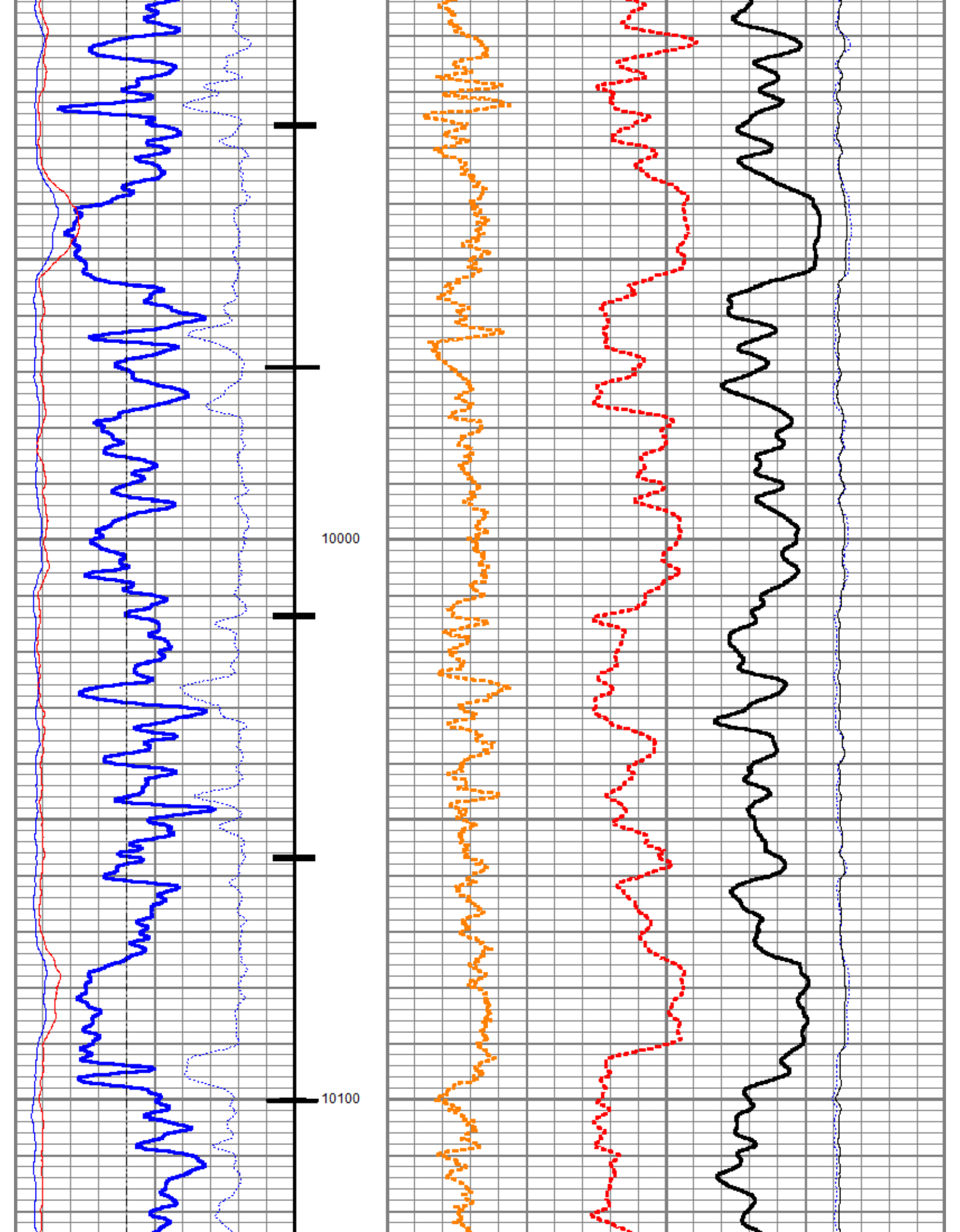


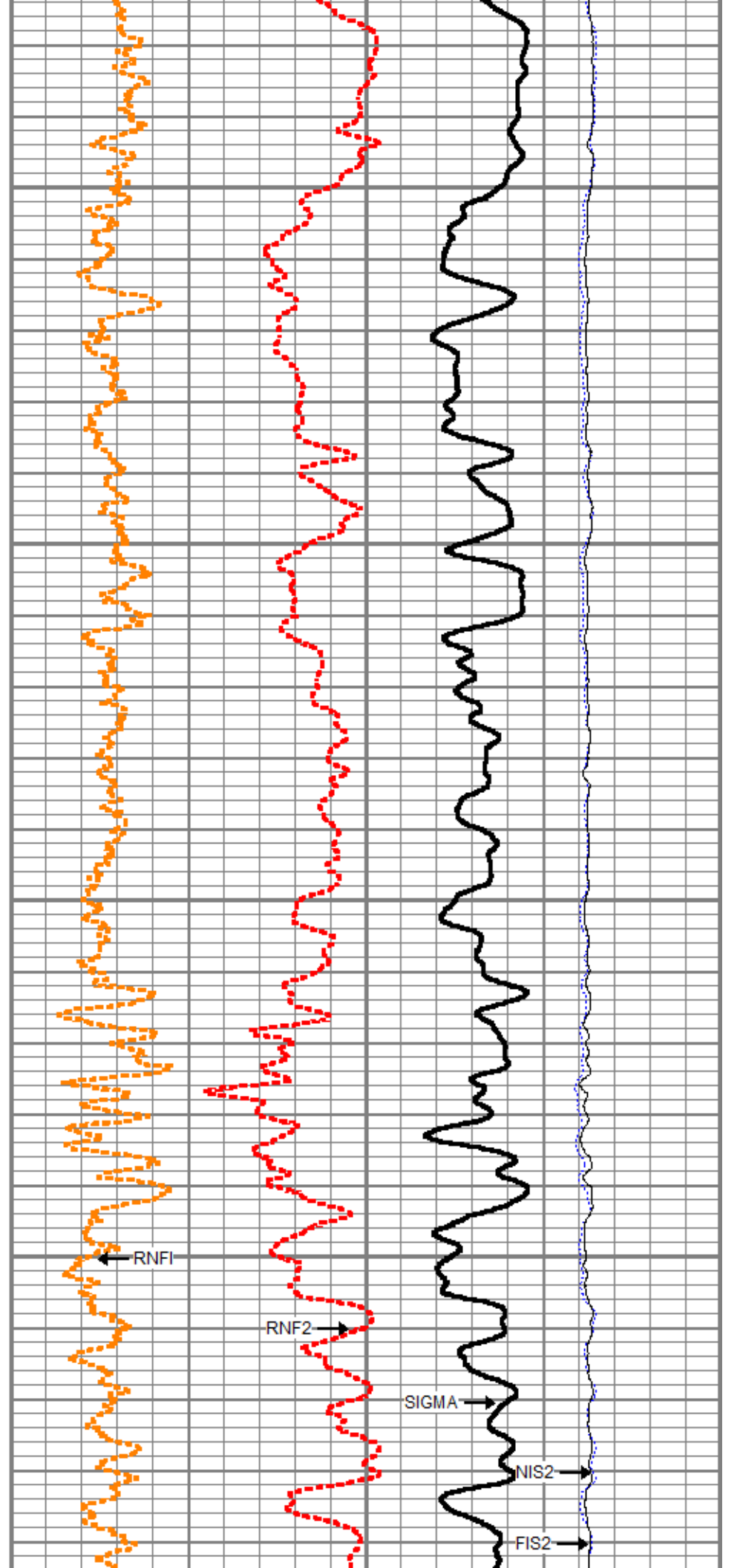
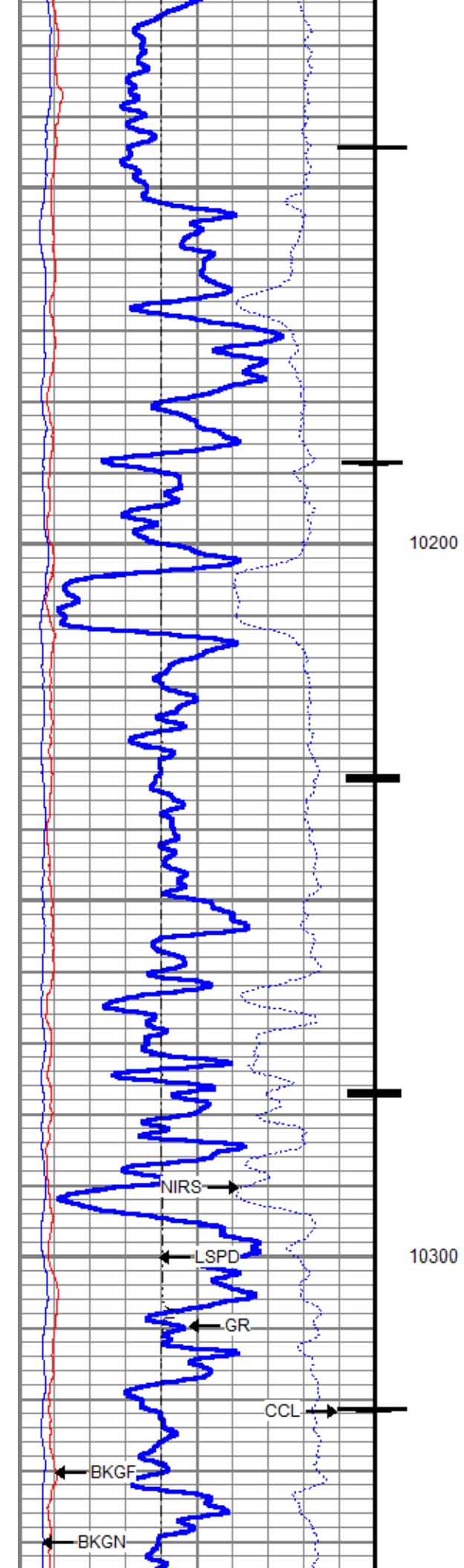


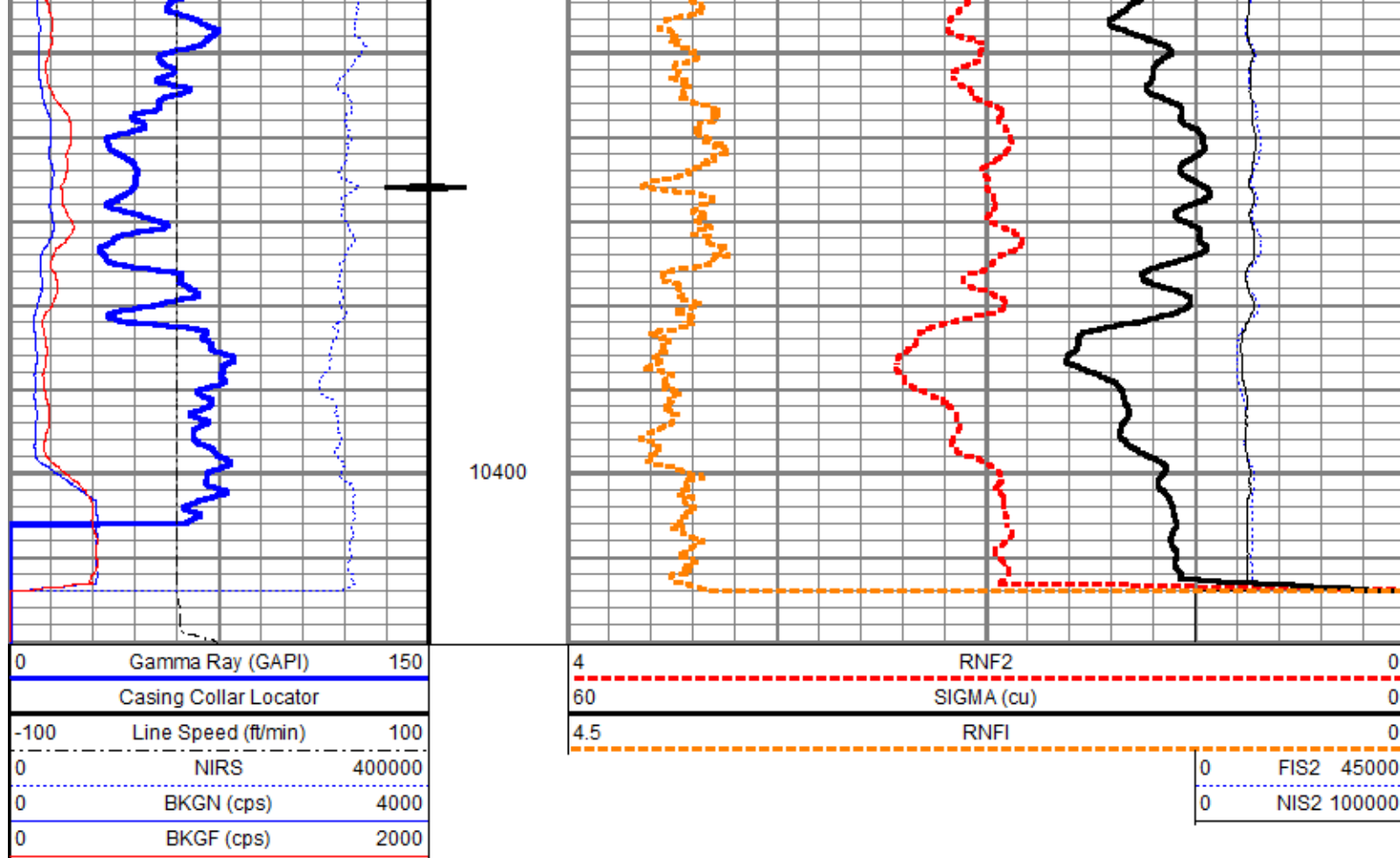






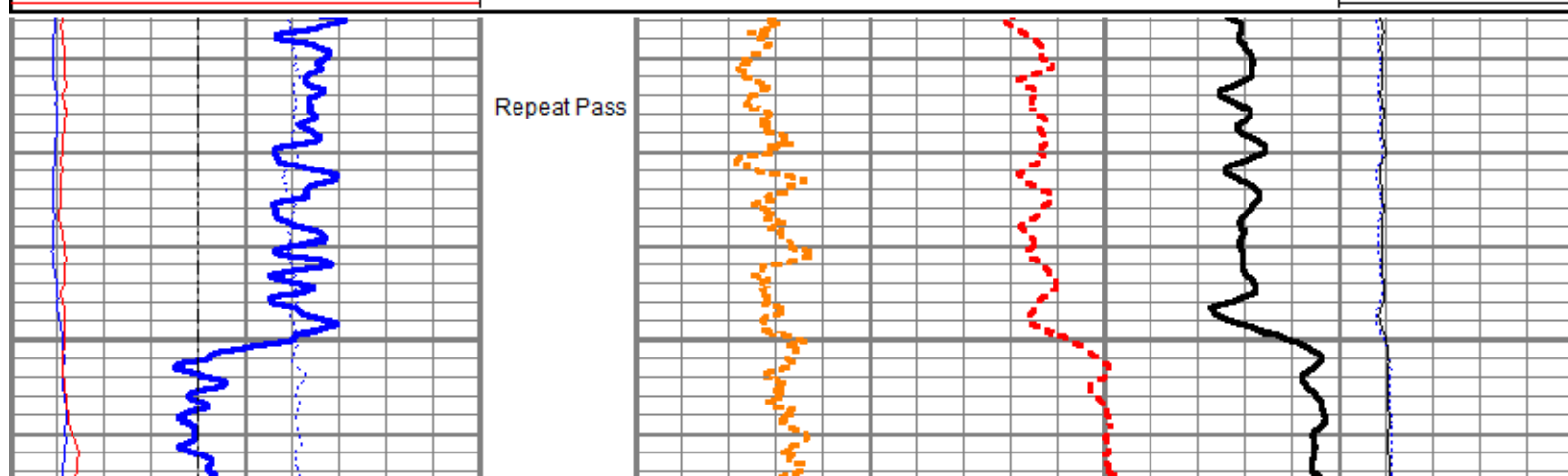
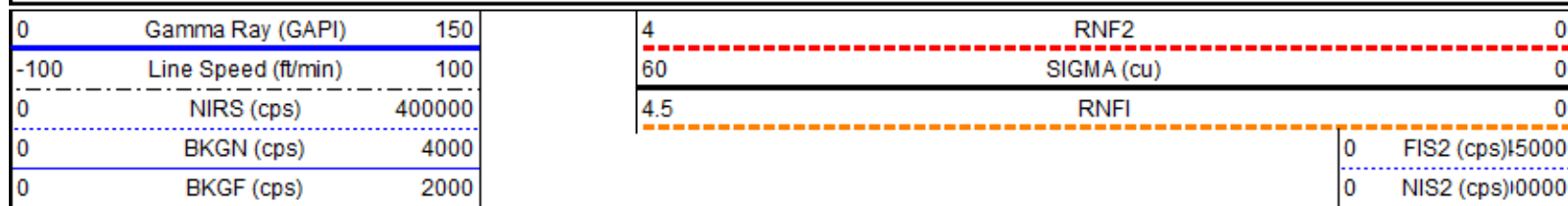


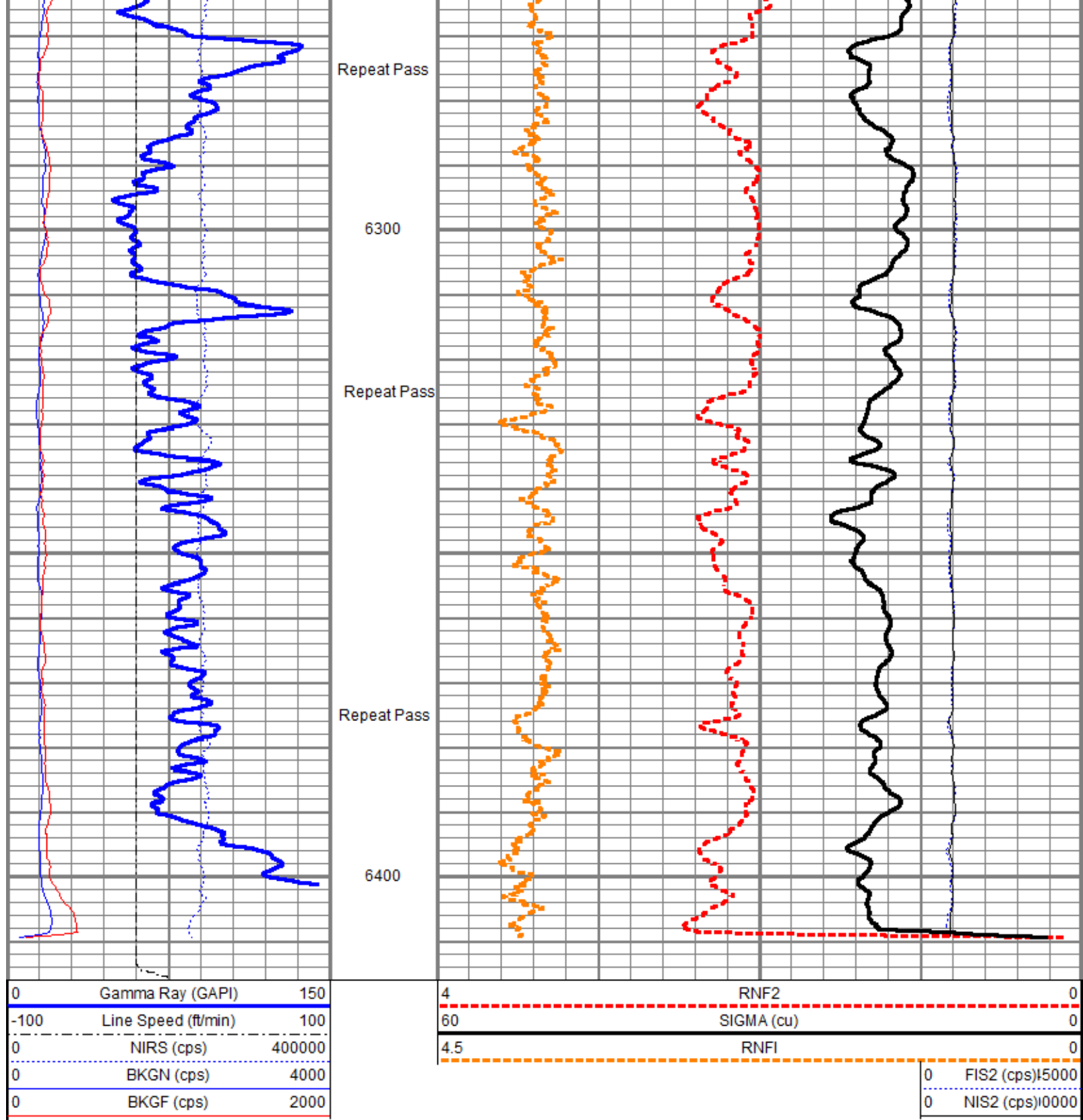





Repeat Pass

Database File clough nr 44-3\pn\tep_clough_nr_44-3_pn_12-18-2018.db
 Dataset Pathname repeat.2
 Presentation Format ros_pdn_hunter
 Dataset Creation Tue Dec 18 23:28:30 2018
 Charted by Depth in Feet scaled 1:240





Sensor	Offset (ft)	Schematic	Description	Length (ft)	O.D. (in)	Weight (lb)
			Titan CHD-16875 GO Titan 1-11/16" Assembled Electric Cable Head w/ 1" Fishing Neck	1.03	1.69	5.40
			HWS_TCU-002 (001704) HWS Telemetry Control Unit (TCU002)	2.30	1.69	10.87

[illegible]

Water Tank

Description	Curve	Standard	Mean	Dev
Sigma Near	SIGN	23.1	24.2	0.35
Sigma Far	SIGF	22.8	23.4	0.46
Ratio Near-Long Capture	RNL2	5.79	6.61	0.05
Ratio Near-Long Burst	RNLB	6.49	6.90	0.05
Ratio Near-Far Capture	RNF2	1.85	2.02	0.02
Ratio Near-Far Burst	RNFB	2.03	2.19	0.01
Spectral Hydrogen Index	HIS2	12.84	13.24	0.21
Carbon-Oxygen Ratio	CORS	1.34	1.36	0.05
Ratio Burst-Capture Near	RNBC	1.46	1.74	0.02
Ratio Burst-Capture Far	RFBC	1.50	1.65	0.01

Hydrocarbon Tank

Description	Curve	Standard	Mean	Dev
Sigma Near	SIGN	25.7	26.5	0.49
Sigma Far	SIGF	25.1	25.9	0.54
Ratio Near-Long Capture	RNL2	1.78	3.07	0.03
Ratio Near-Long Burst	RNLB	2.57	4.52	0.02
Ratio Near-Far Capture	RNF2	0.98	1.31	0.01
Ratio Near-Far Burst	RNFB	1.30	1.67	0.01
Spectral Hydrogen Index	HIS2	16.68	18.05	0.35
Carbon-Oxygen Ratio	CORS	1.51	1.56	0.04
Ratio Burst-Capture Near	RNBC	2.23	2.47	0.02
Ratio Burst-Capture Far	RFBC	2.09	2.16	0.01

Gamma Ray Calibration Report

Serial Number:	001681	
Tool Model:	001	
Performed:	(Not Performed)	
Calibrator Value:	1.0	GAPI
Background Reading:	0.0	
Calibrator Reading:	1.0	
Sensitivity:	1.0000	GAPI/



Company TEP Rocky Mountain LLC
Well Clough NR 44-3
Field Rulison
County Garfield
State Colorado