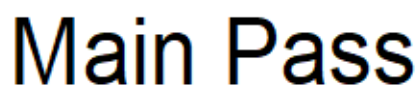


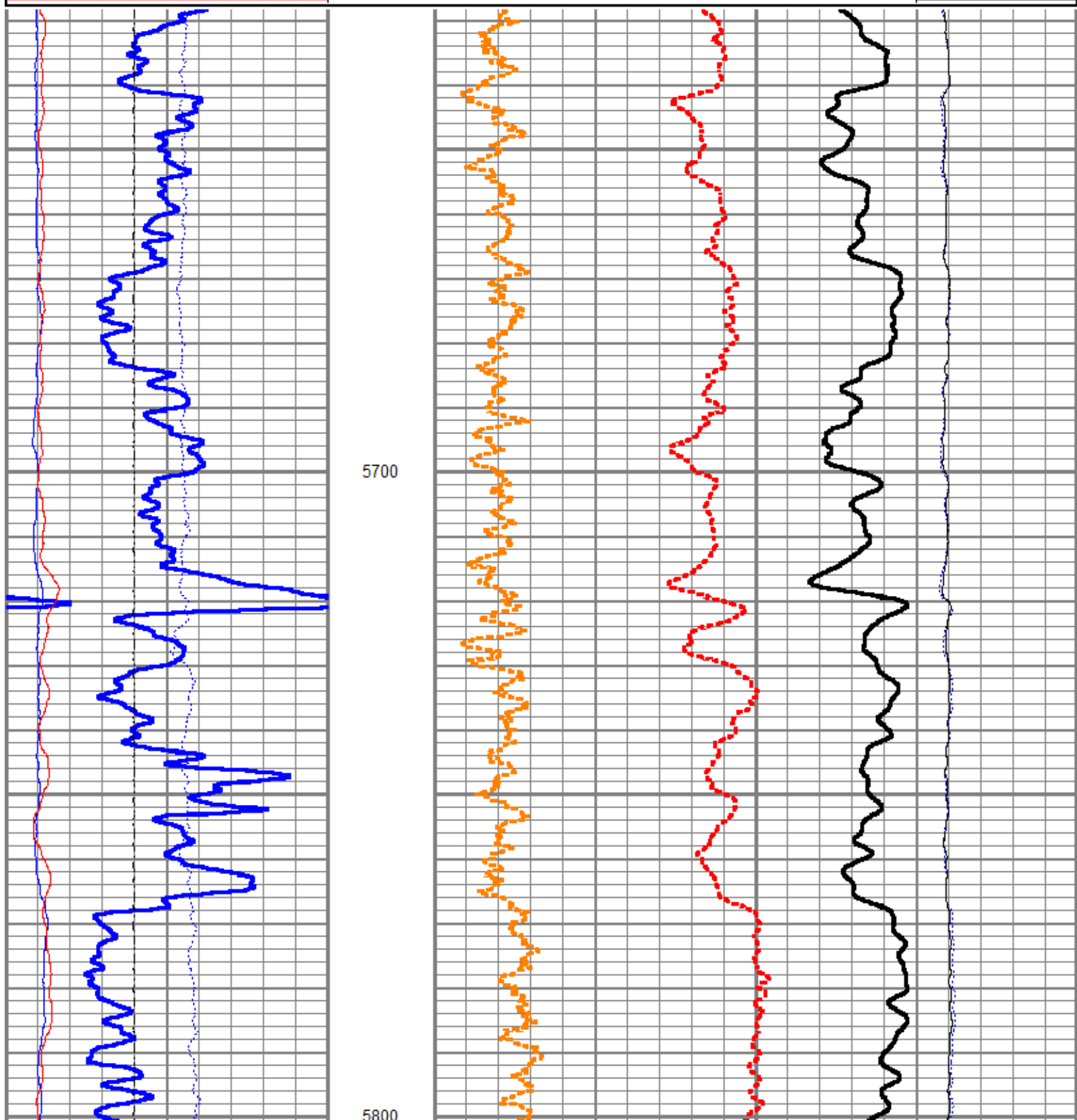
<<< Fold Here >>>
<p>All interpretations are opinions based on inferences from electrical or other measurements and we cannot and do not guarantee the accuracy or correctness of any interpretation, and we shall not, except in the case of gross or willful negligence on our part, be liable or responsible for any loss, costs, damages, or expenses incurred or sustained by anyone resulting from any interpretation made by any of our officers, agents or employees. These interpretations are also subject to our general terms and conditions set out in our current Price Schedule.</p>
Comments
<p>Log ran as per customer request Depth referenced to Reliance Bond Log dated 26-NOV-2018 Log ran from 9947 FT to 5628 FT Pulsed Neutron Data logged with the Hunter RAS Tool</p> <p>Thank you for choosing Reliance Oilfield Services, LLC!</p>

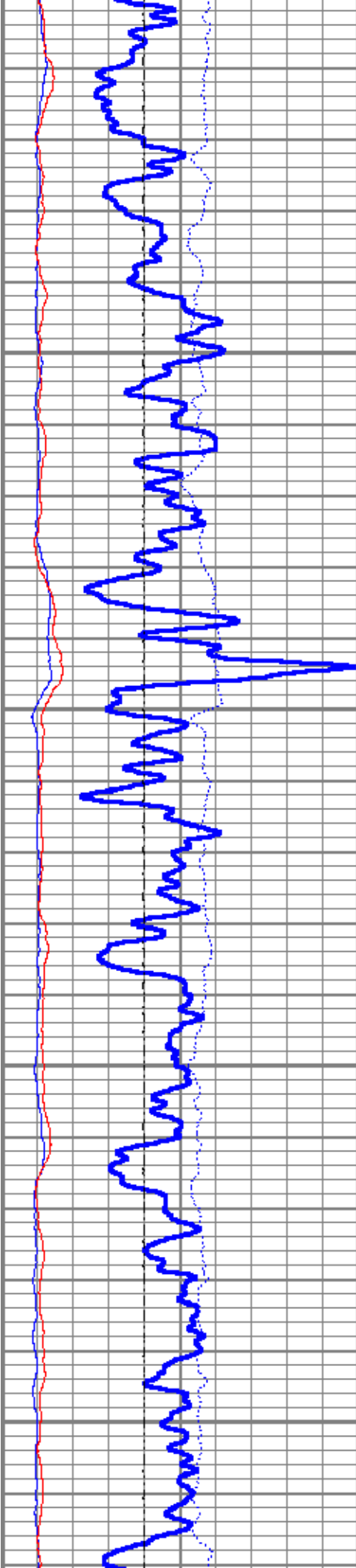


Database File	tep\clough_nr_313-3\tep_clough_nr_313-3_pn_nov-26-2018.db
Dataset Pathname	run/pn_shift
Presentation Format	ros_pdn_hunter
Dataset Creation	Tue Nov 27 13:33:22 2018
Charted by	Depth in Feet scaled 1:240

0	Gamma Ray (GAPI)	150
-100	Line Speed (ft/min)	100
0	NIRS	400000
0	BKGN (cps)	4000
0	BKGF (cps)	2000

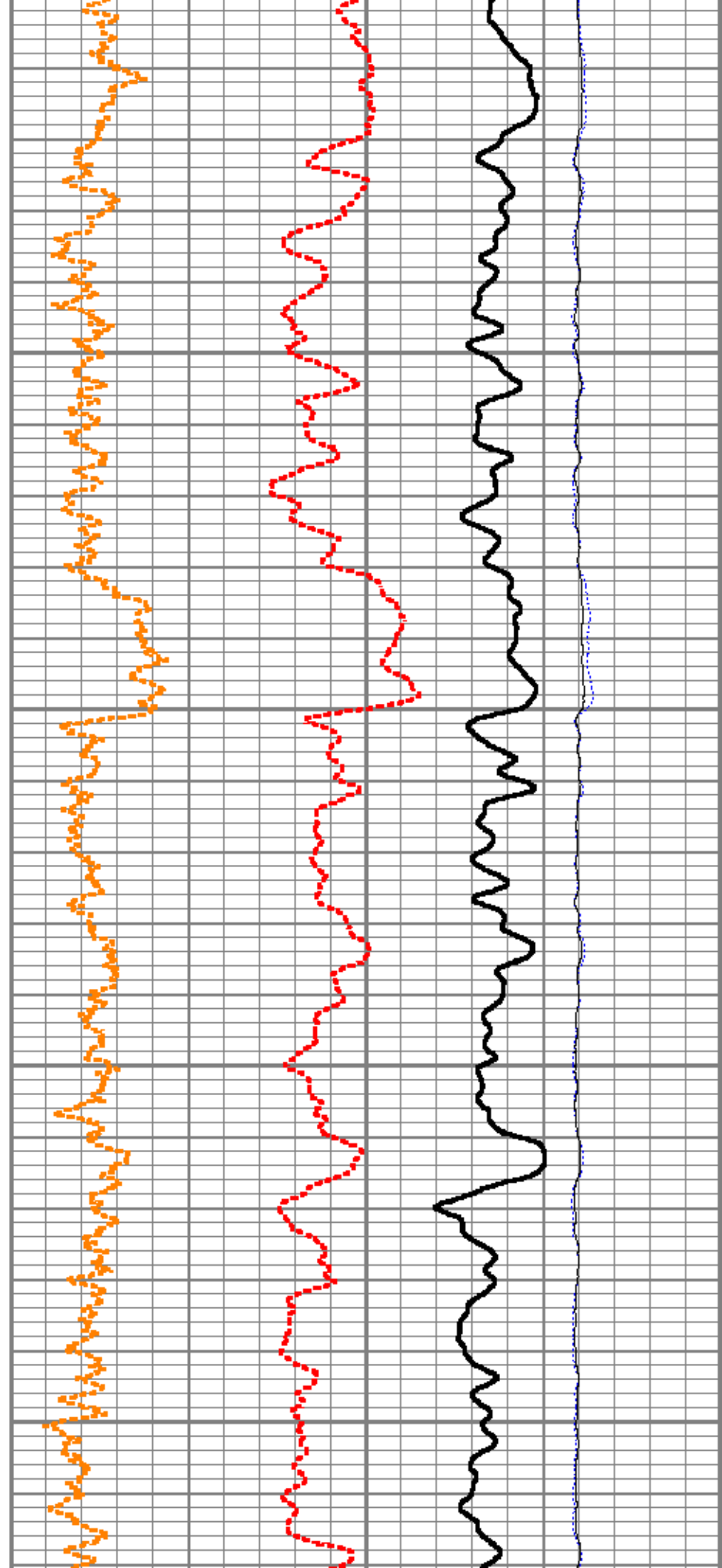
4	RNF2	0
60	SIGMA (cu)	0
4.5	RNF1	0
0	FIS2	45000
0	NIS2	100000

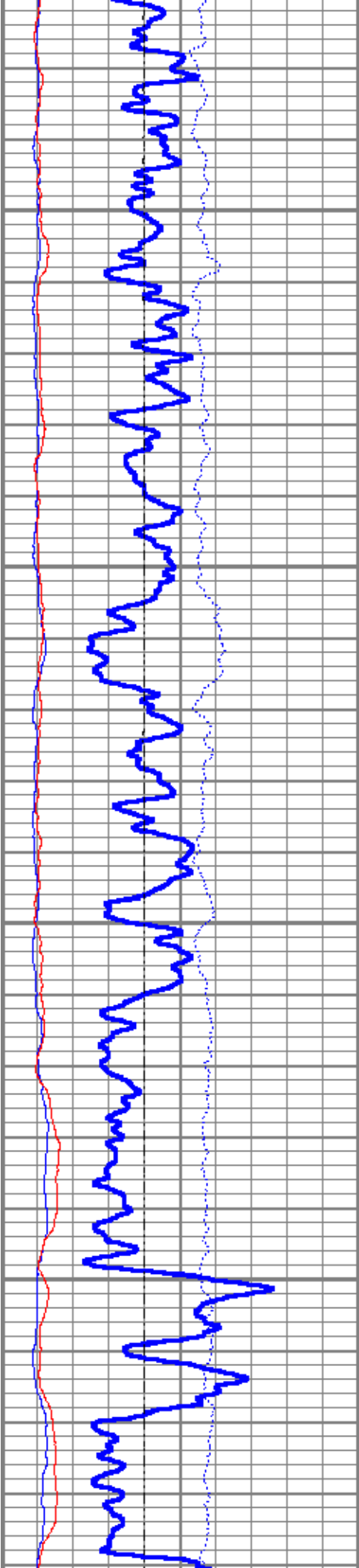




5900

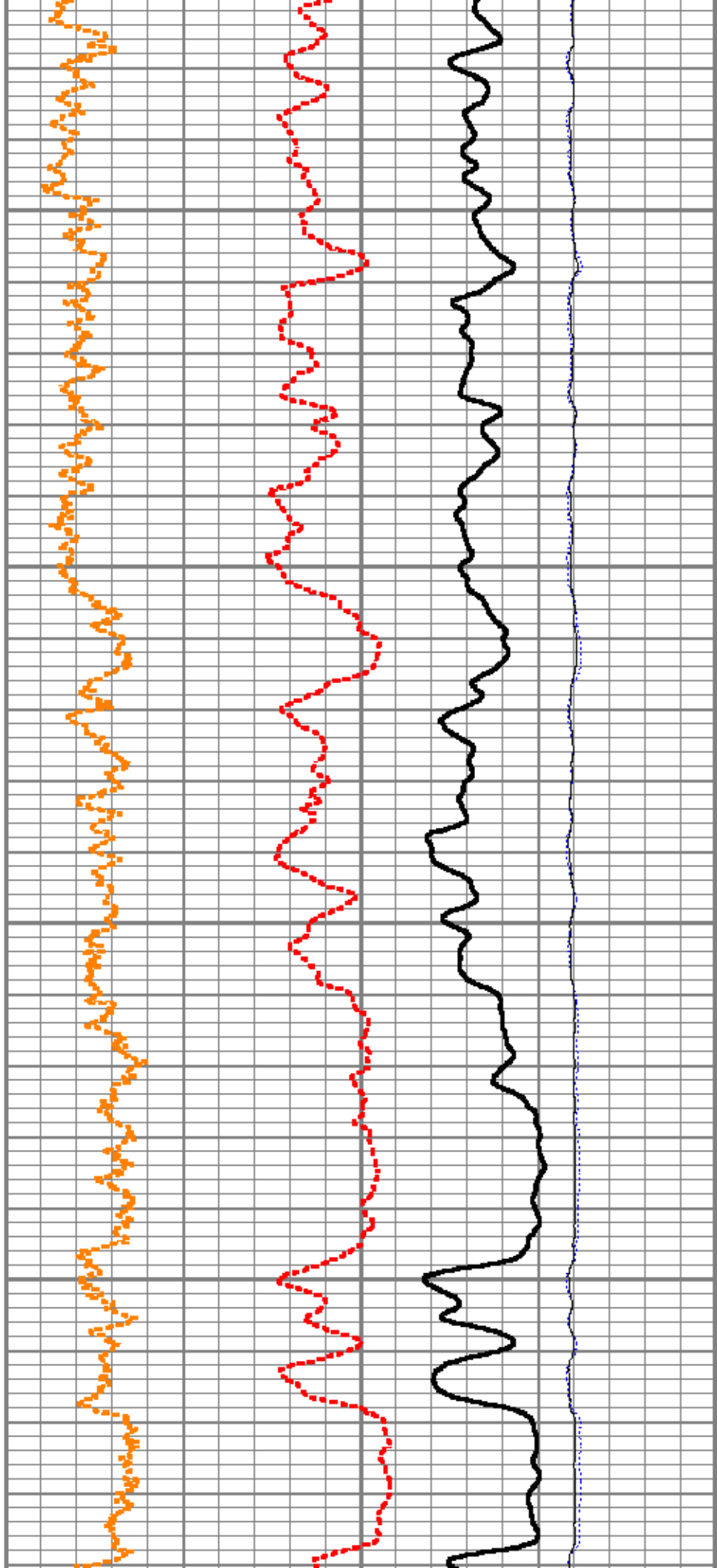
6000

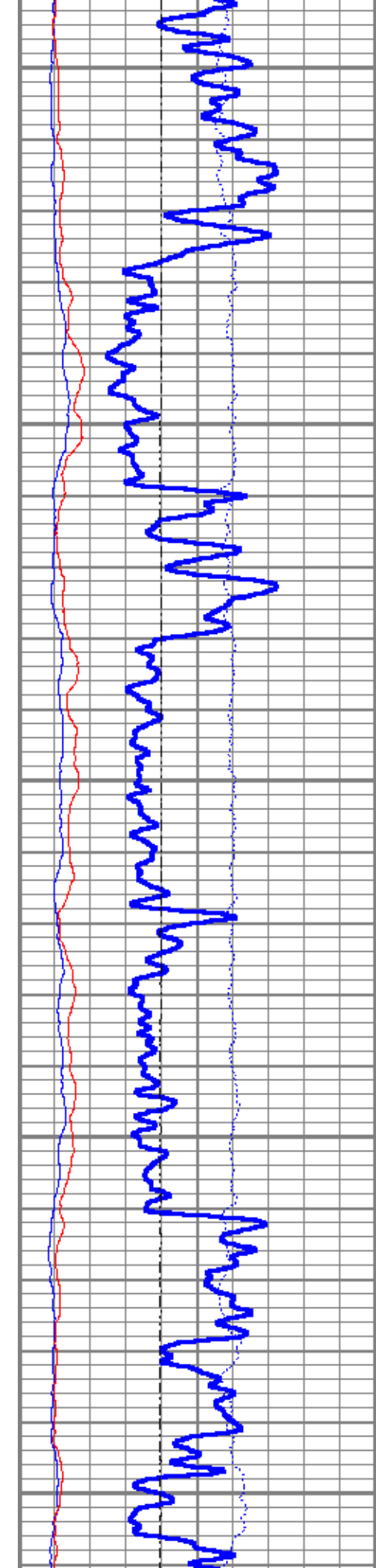




6100

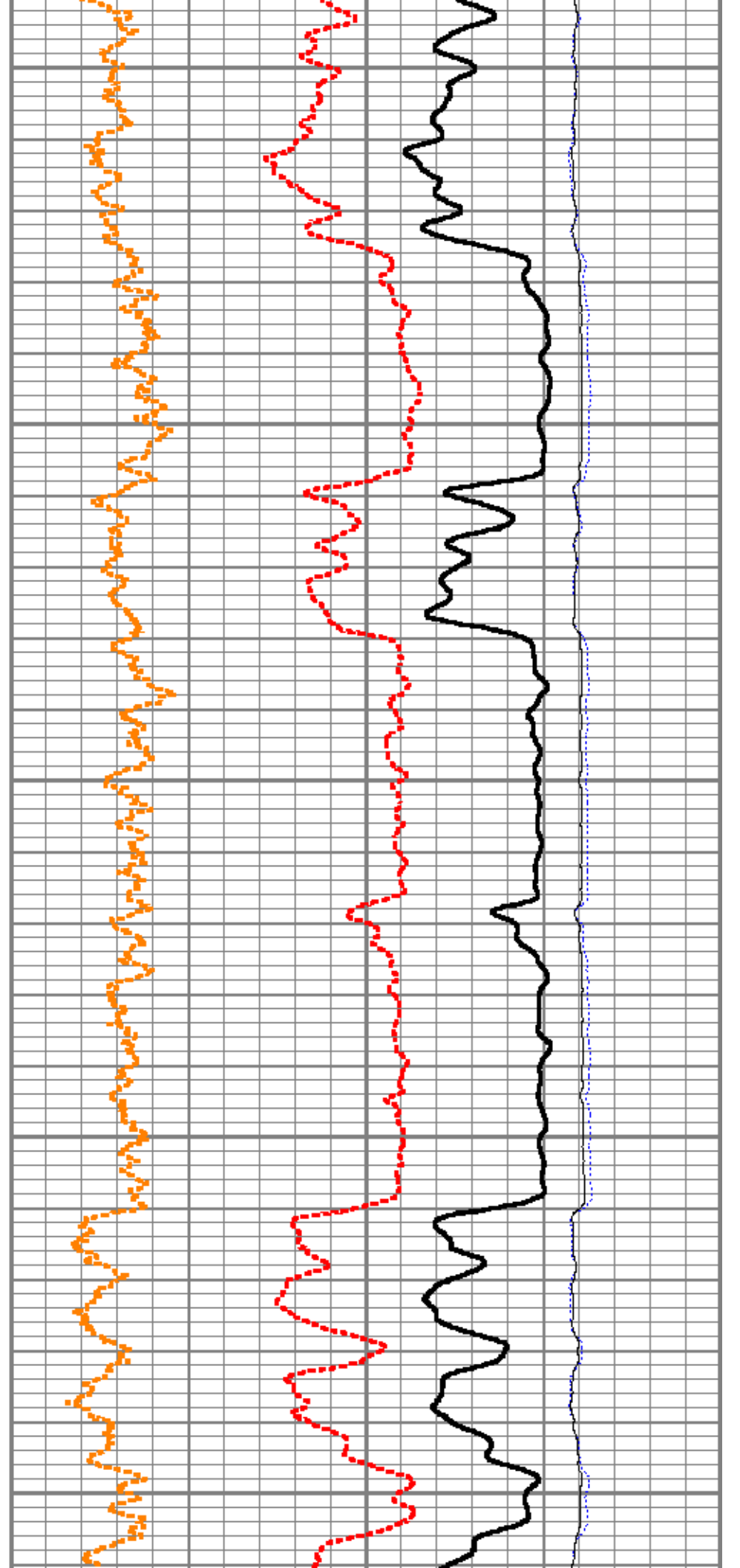
6200

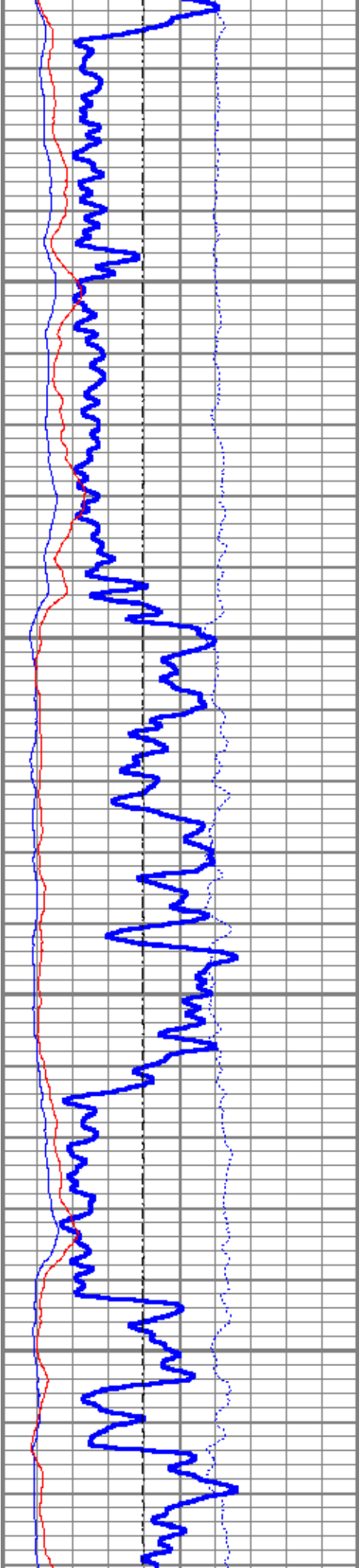




6300

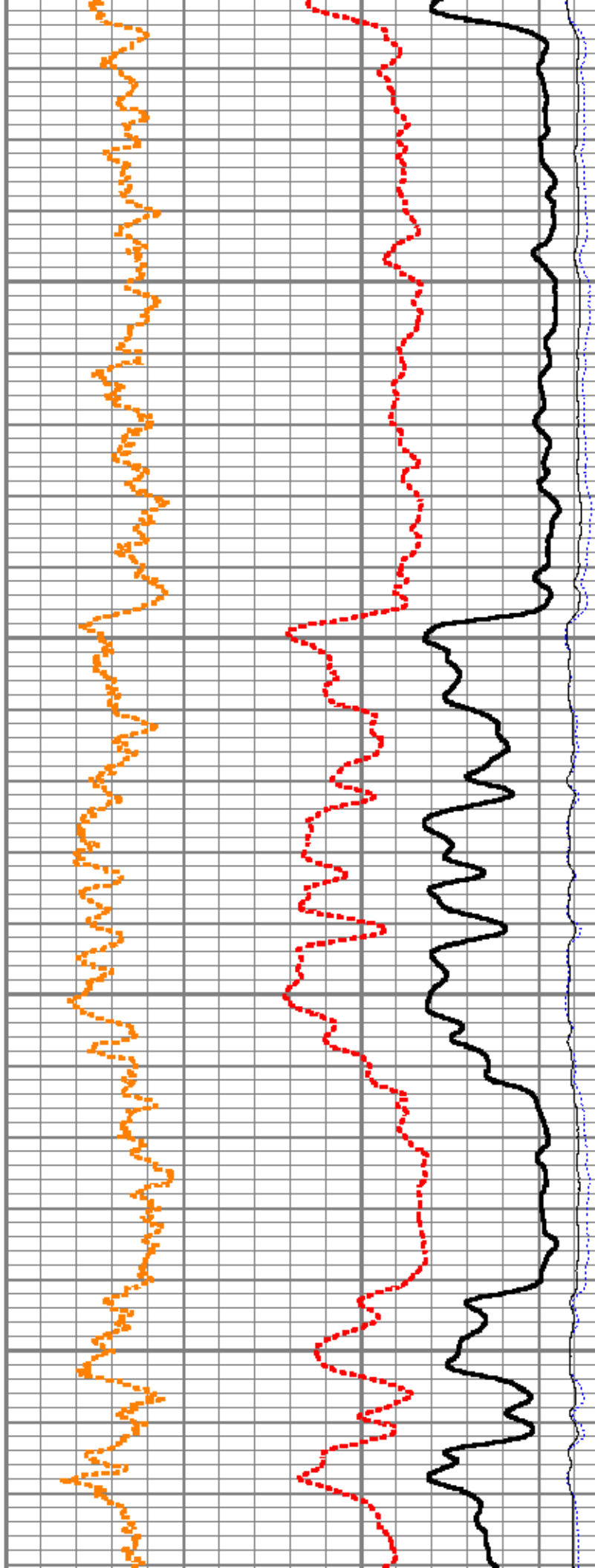
6400

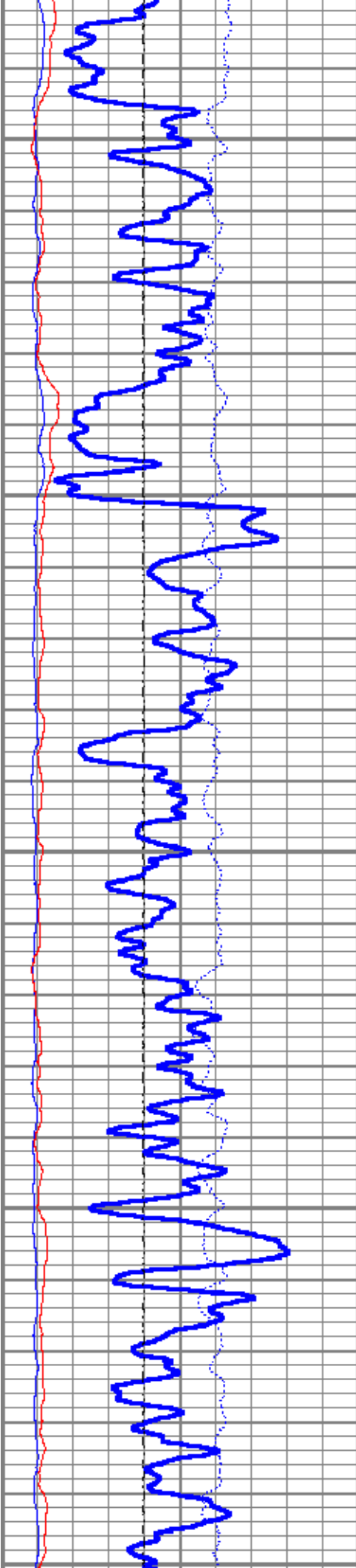




6500

6600

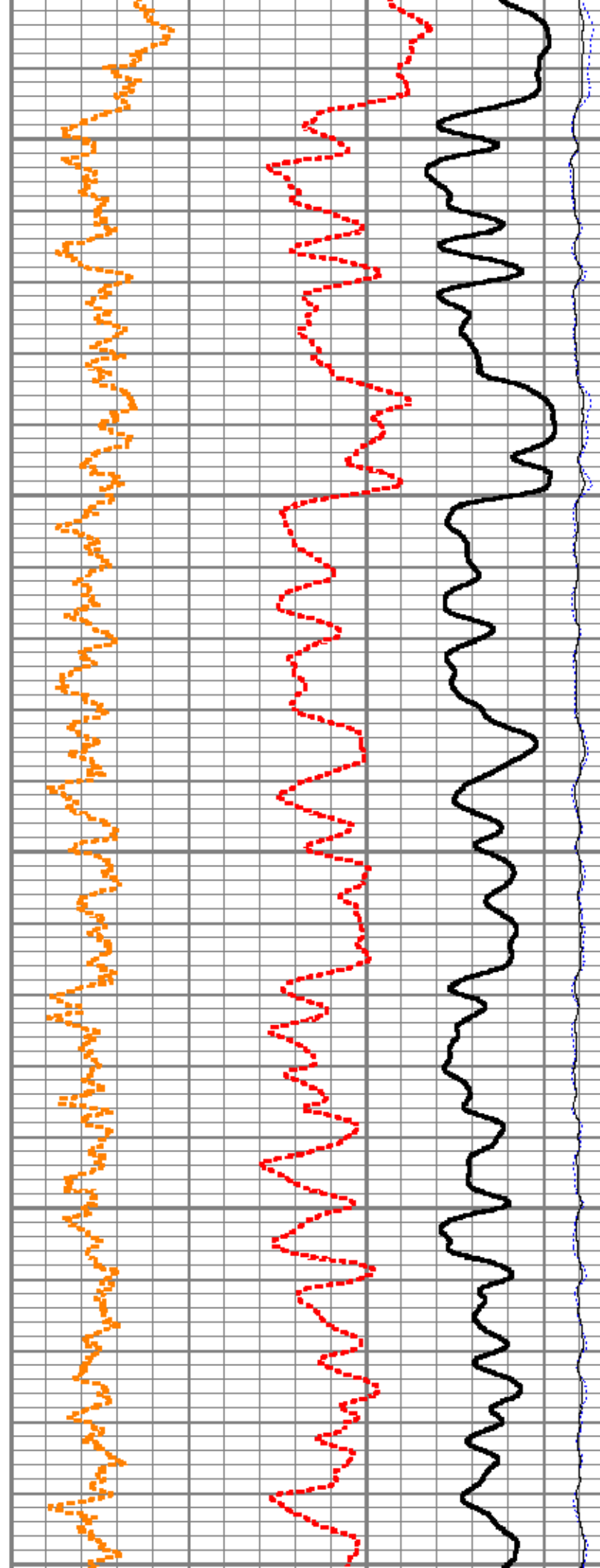


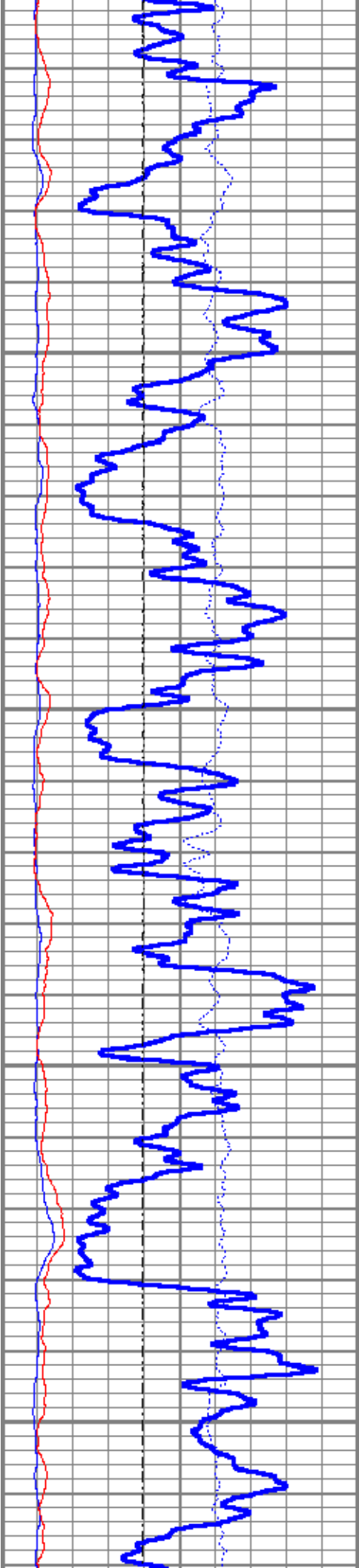


6700

6800

6900

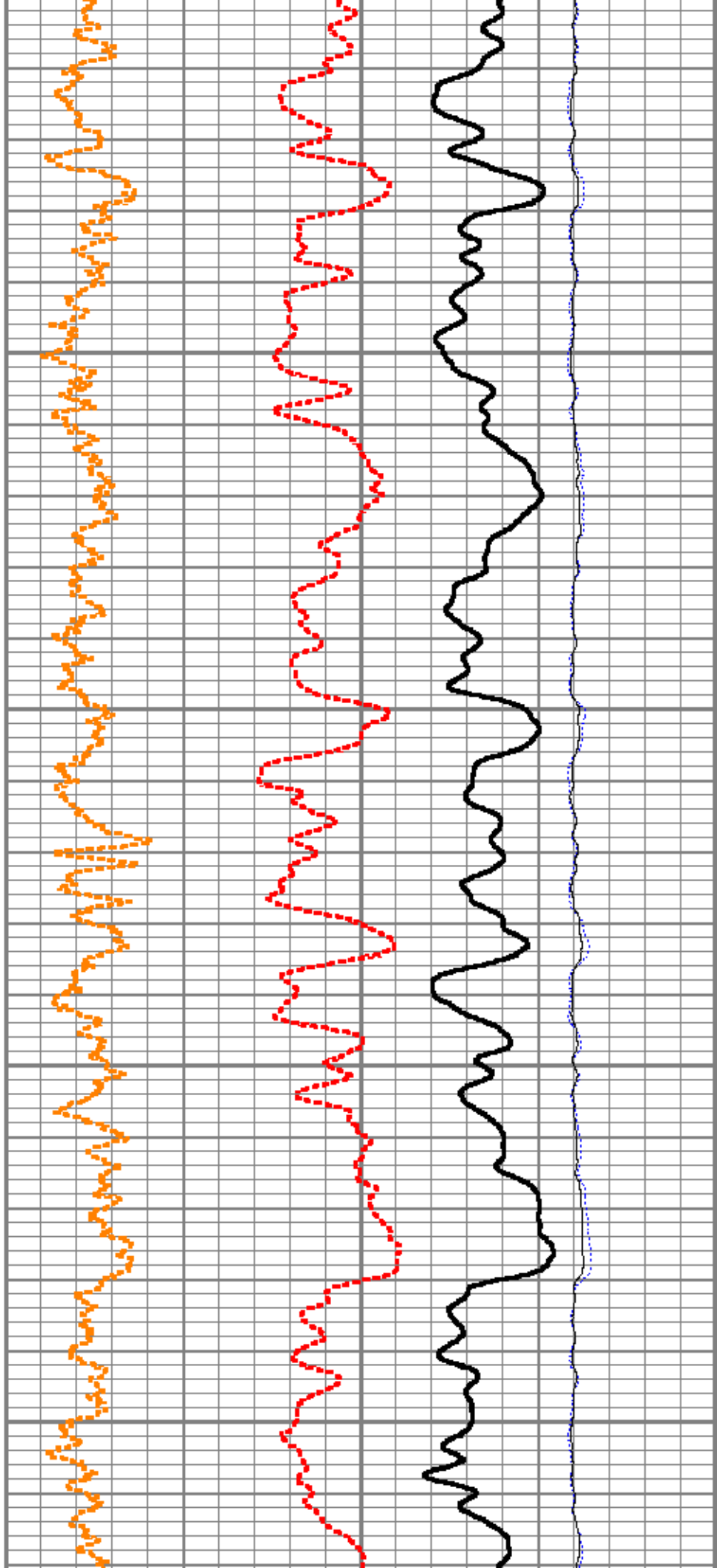


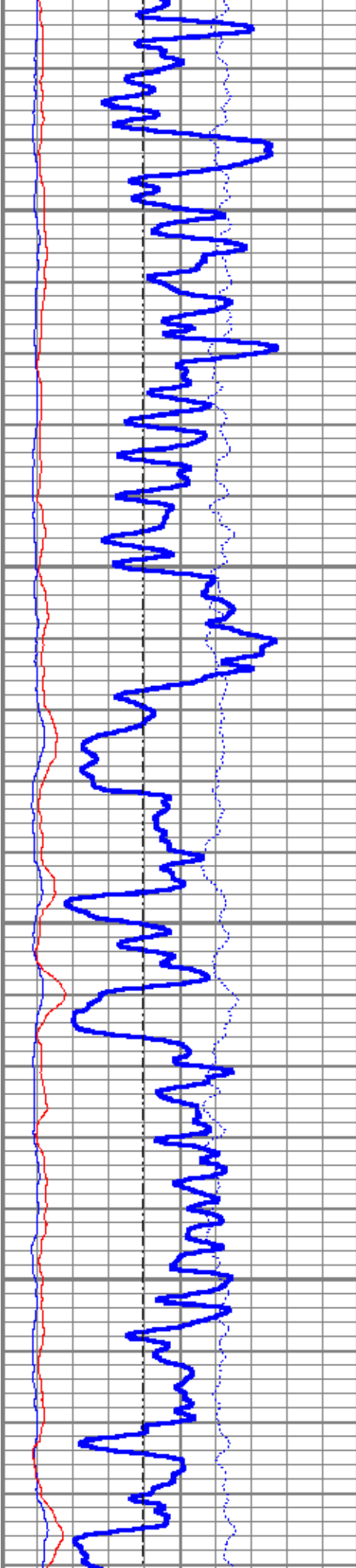


6900

7000

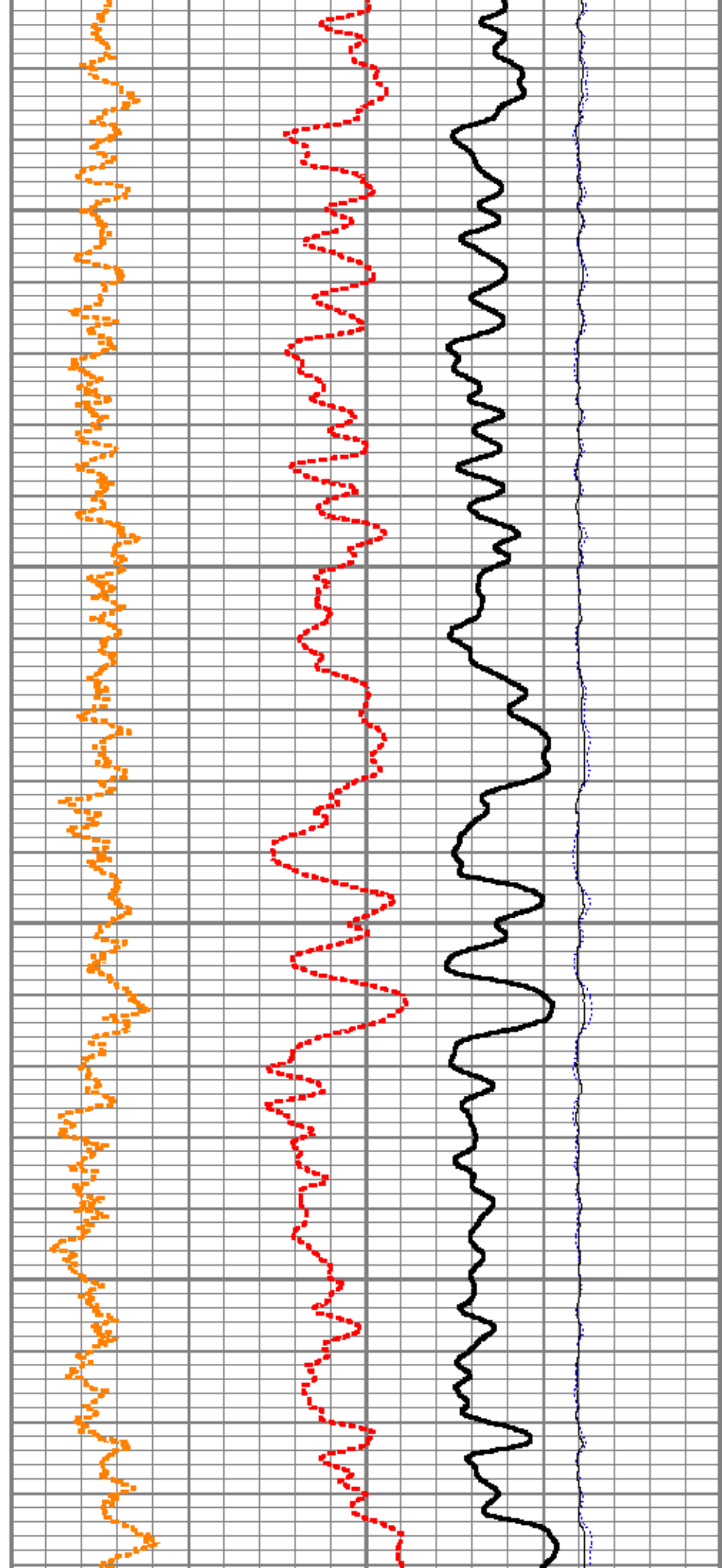
7100

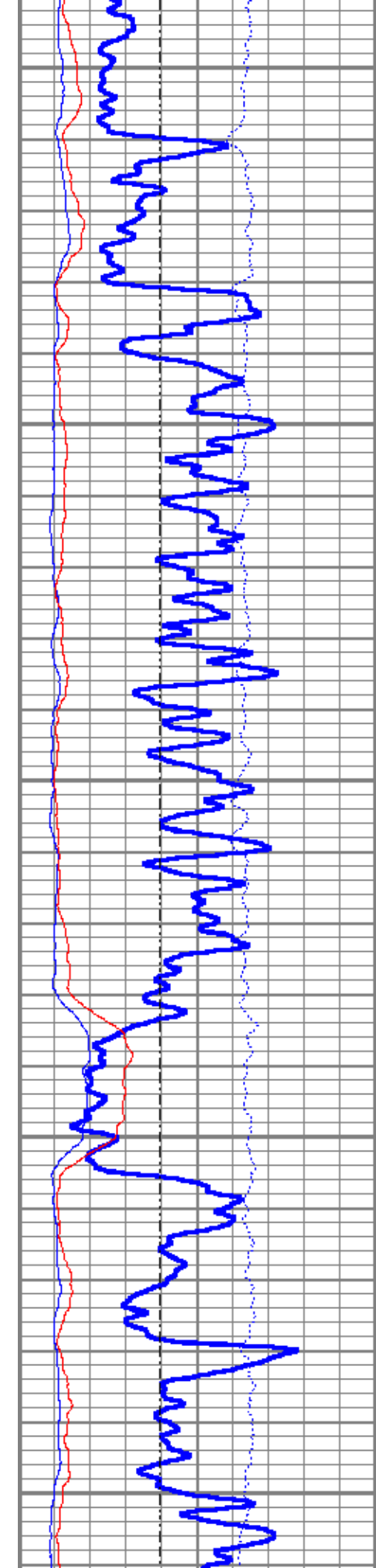




7200

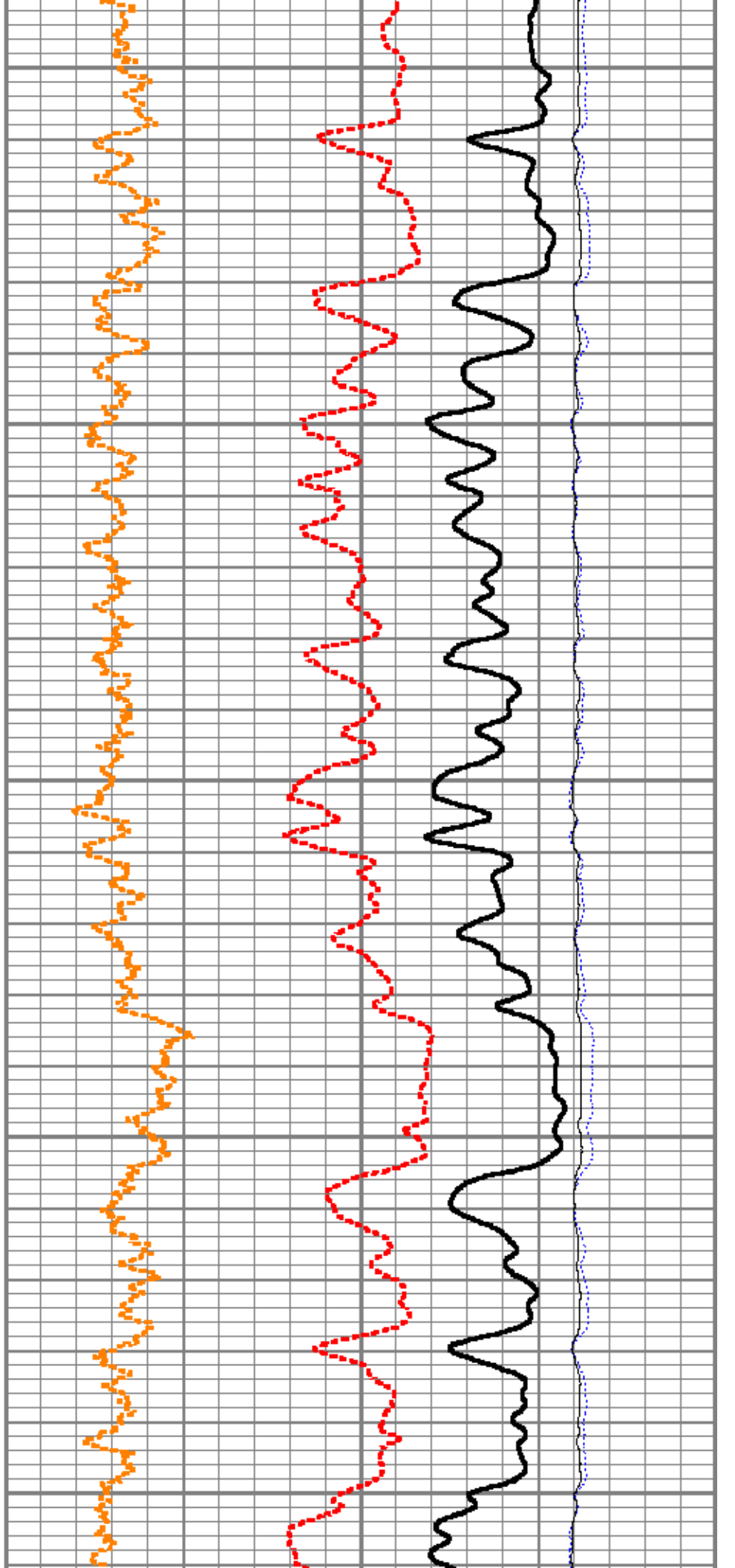
7300





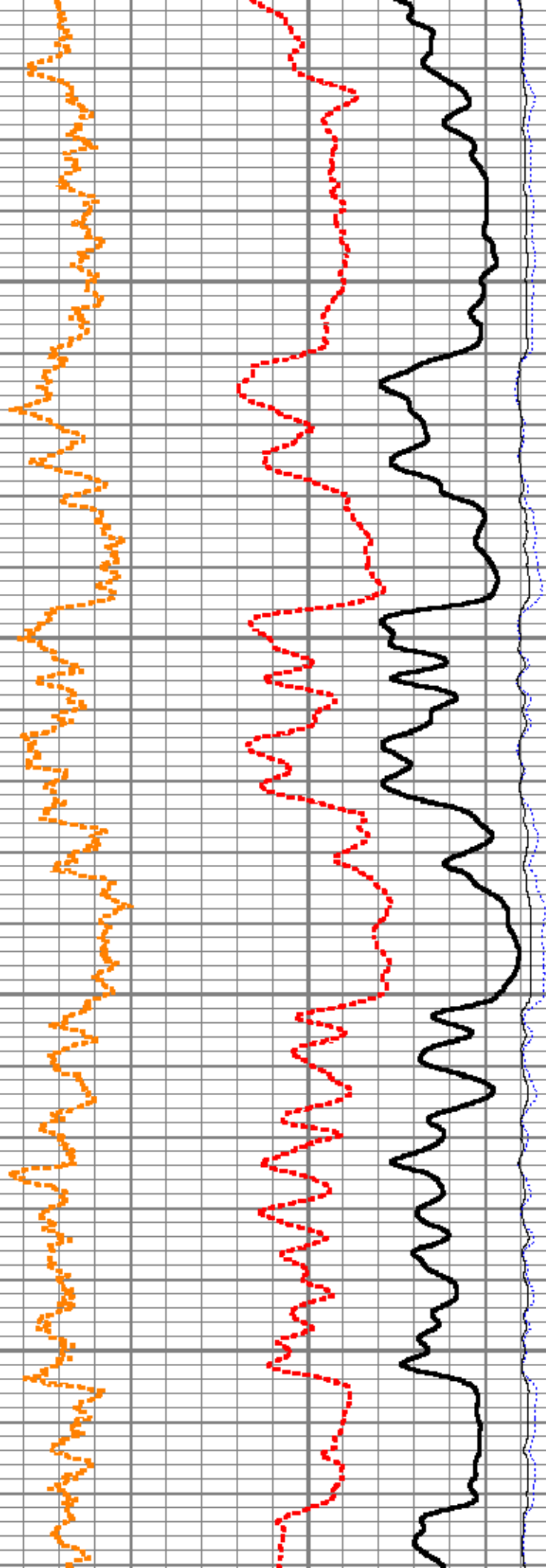
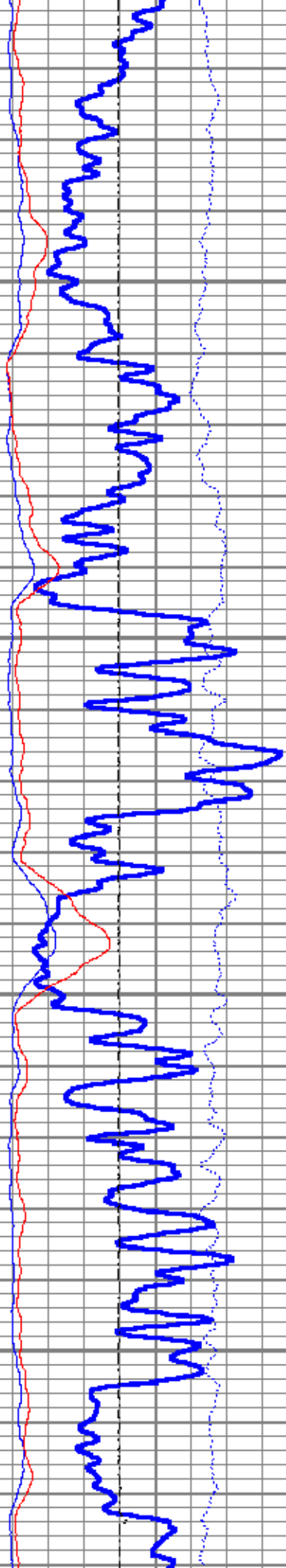
7400

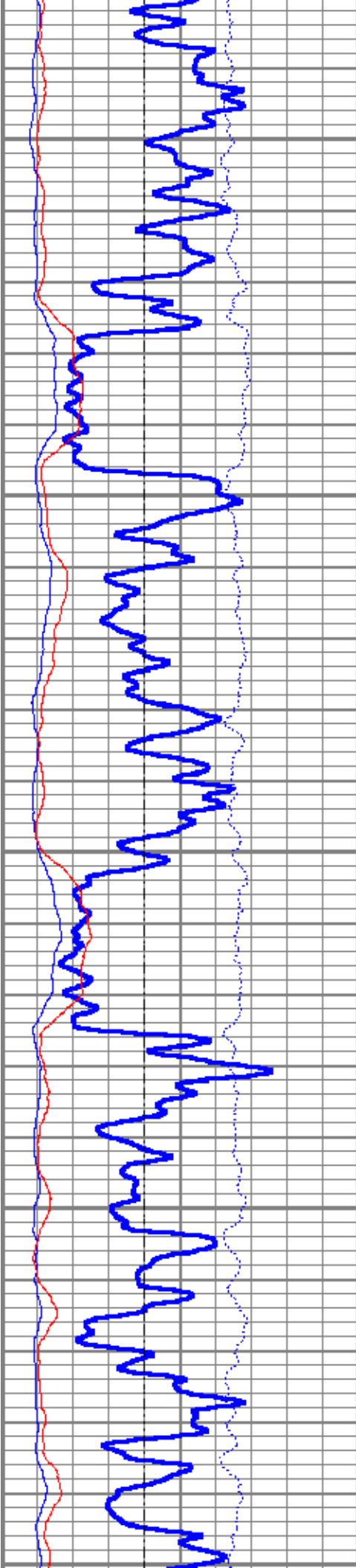
7500



7600

7700

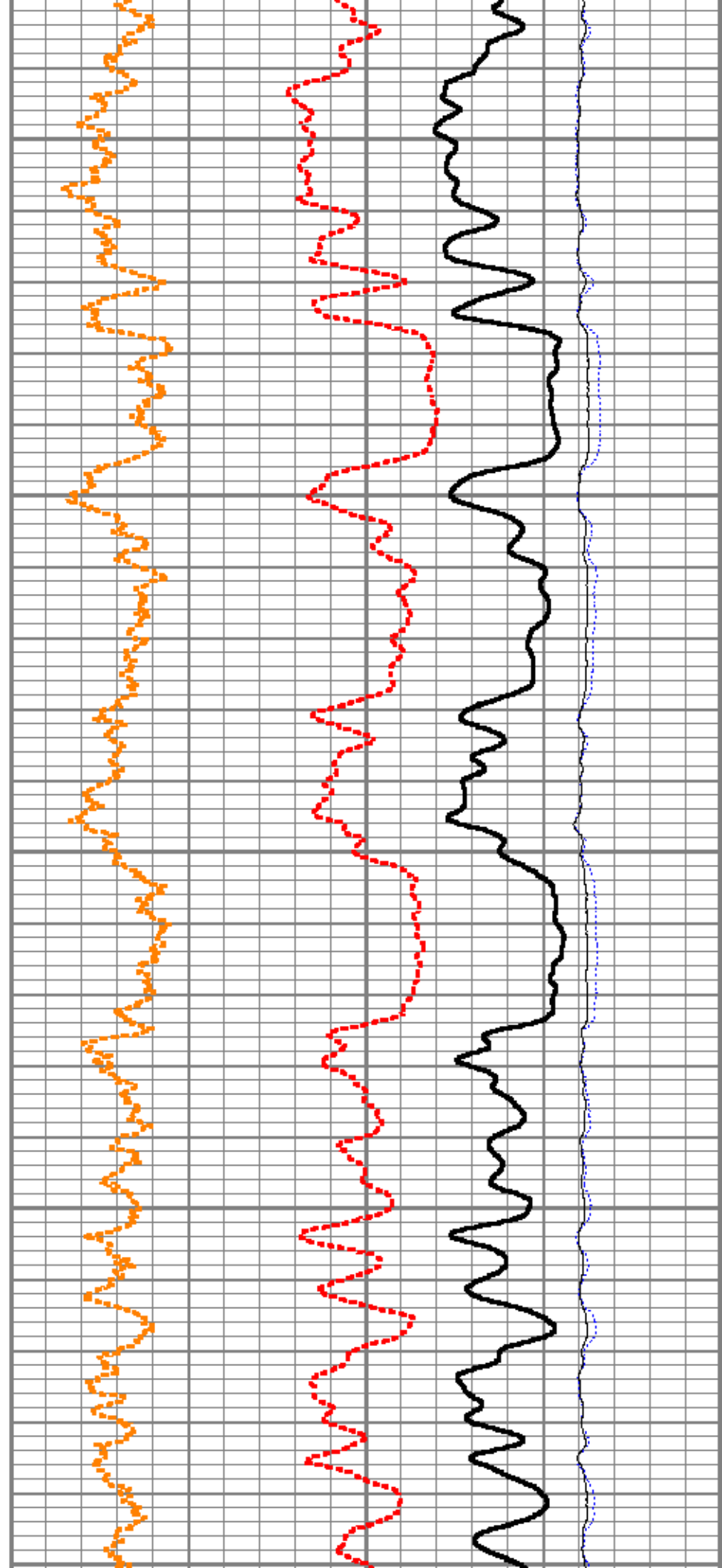


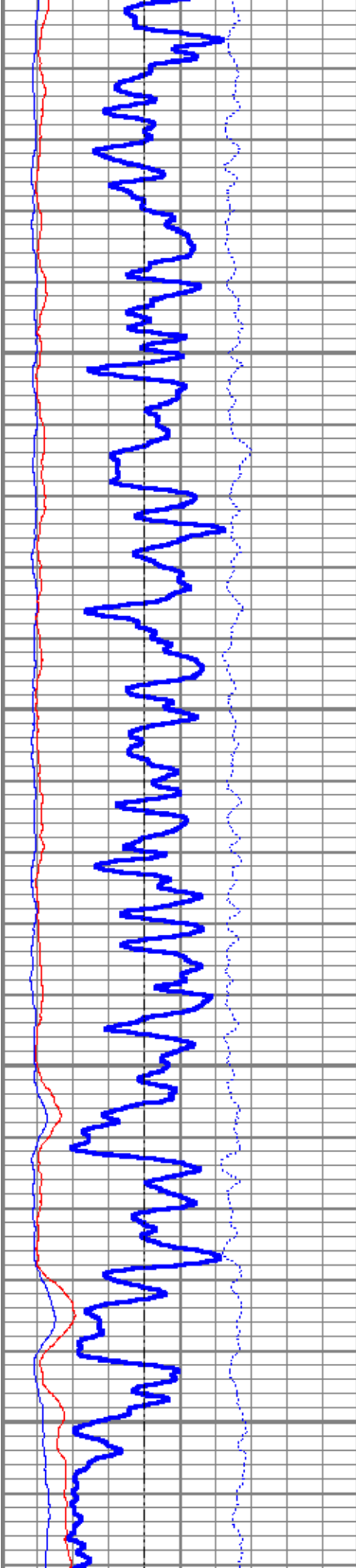


7800

7900

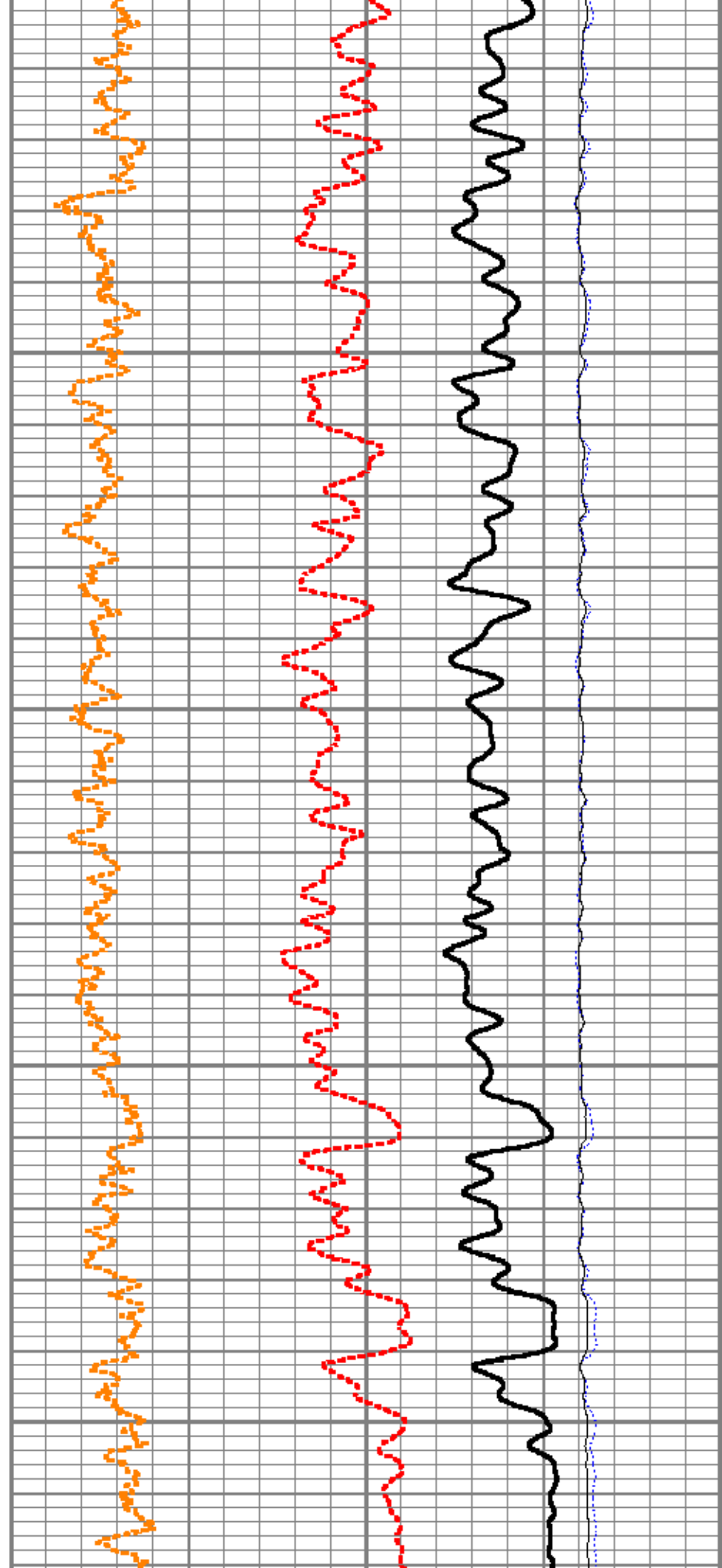
8000

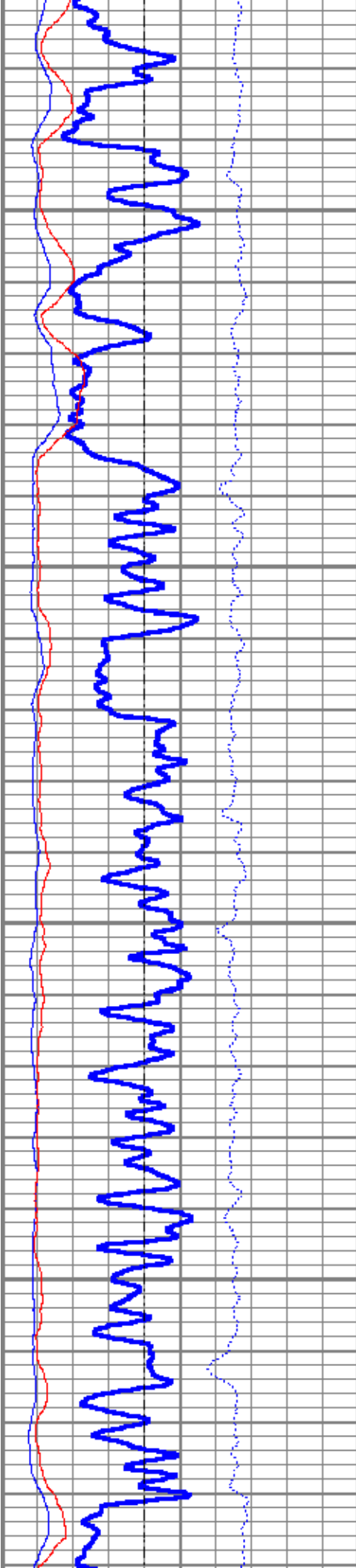




8100

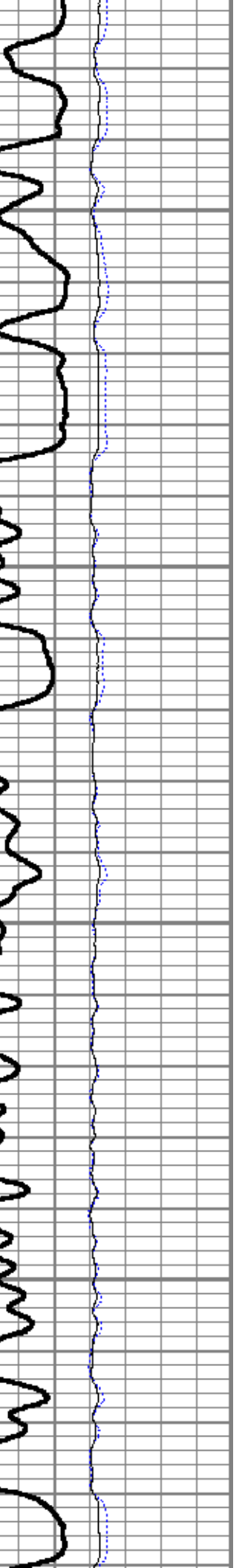
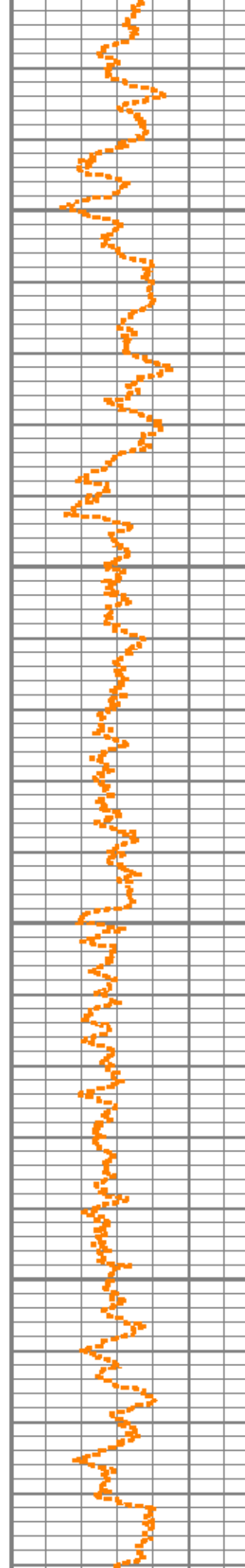
8200

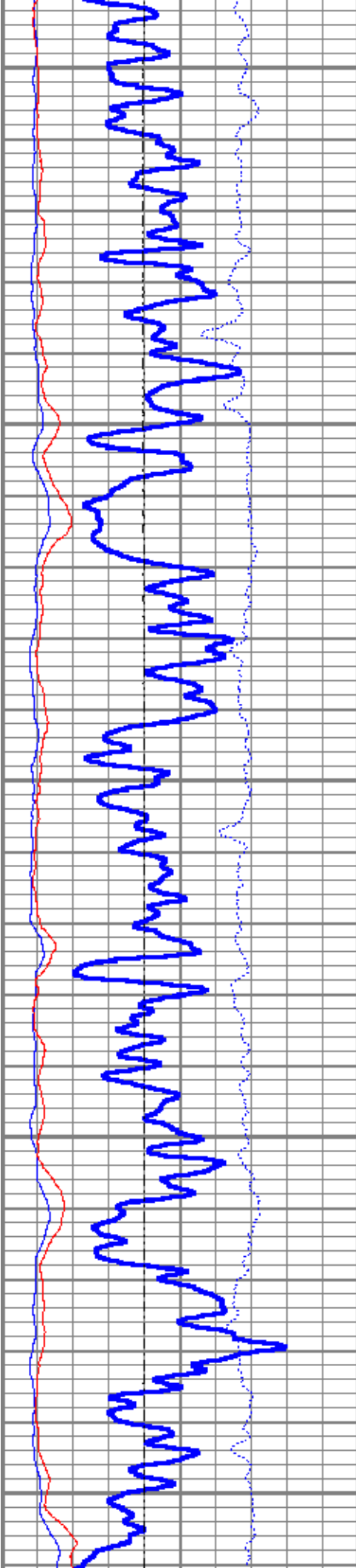




8300

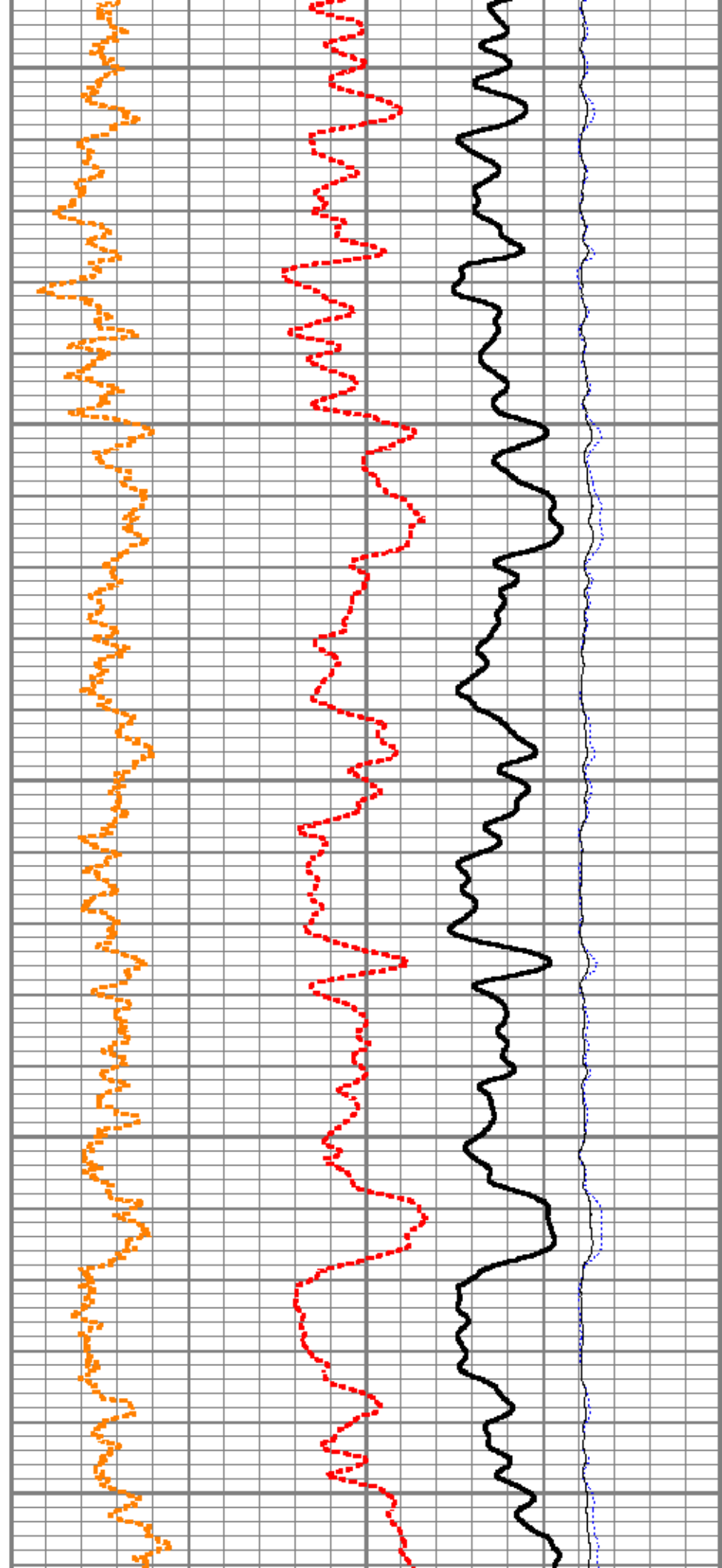
8400

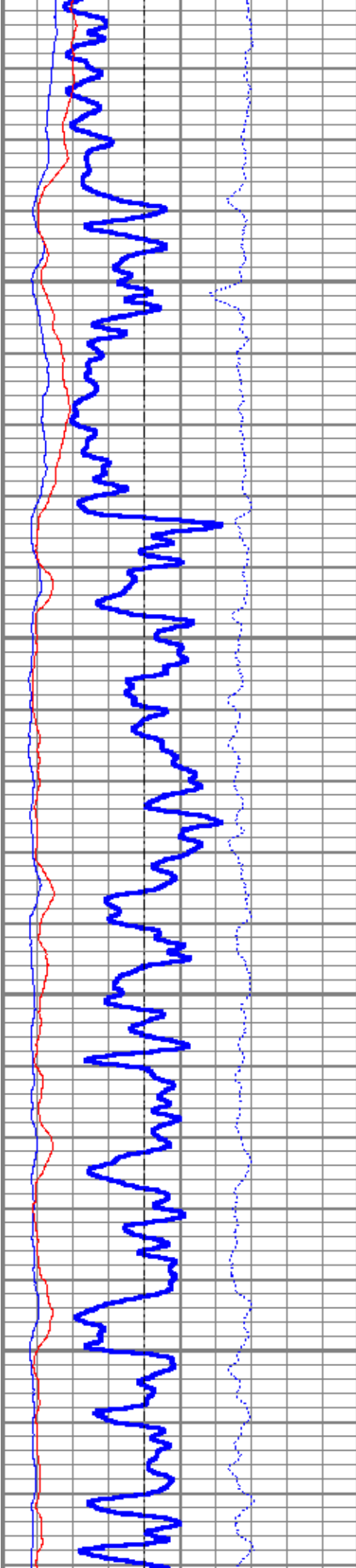




8500

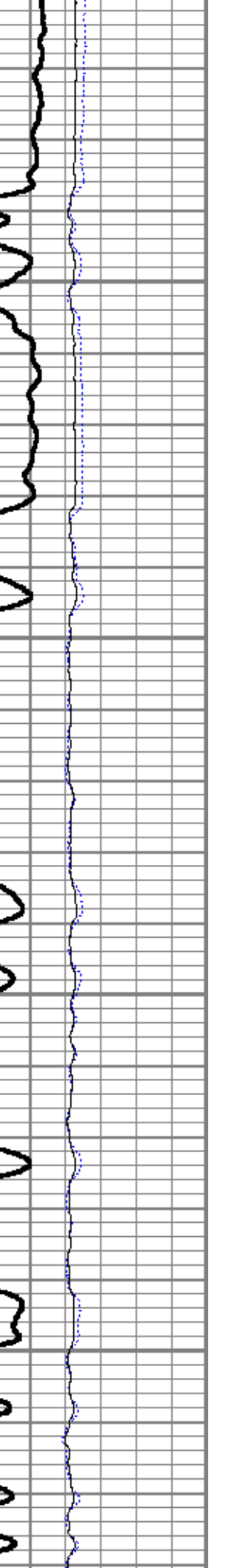
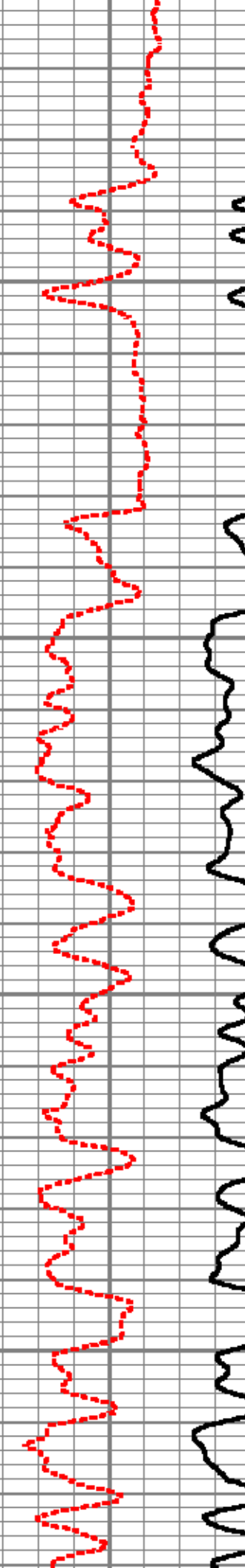
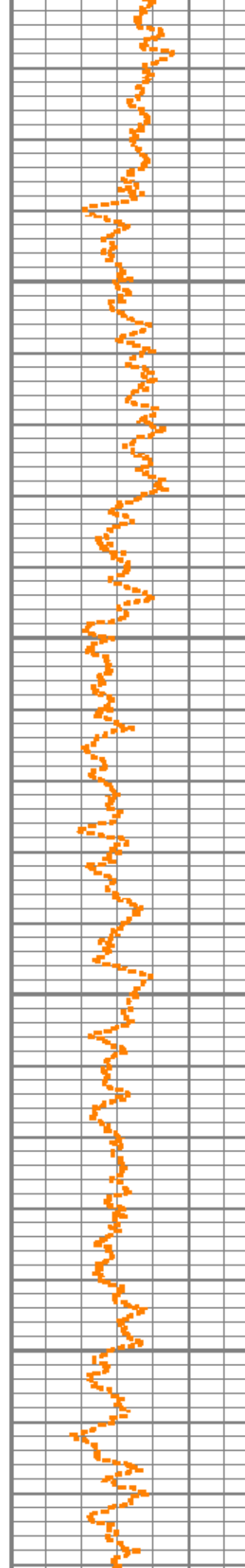
8600

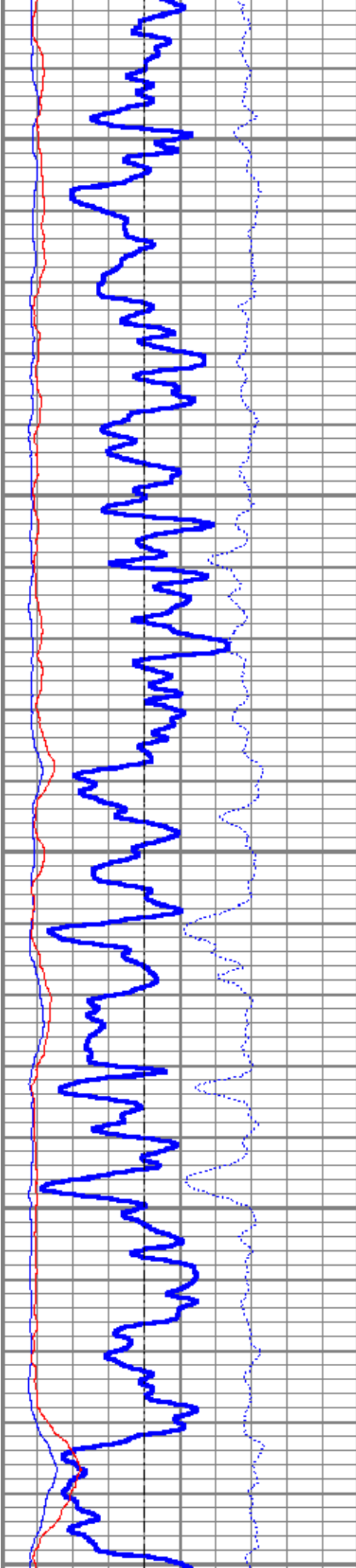




8700

8800

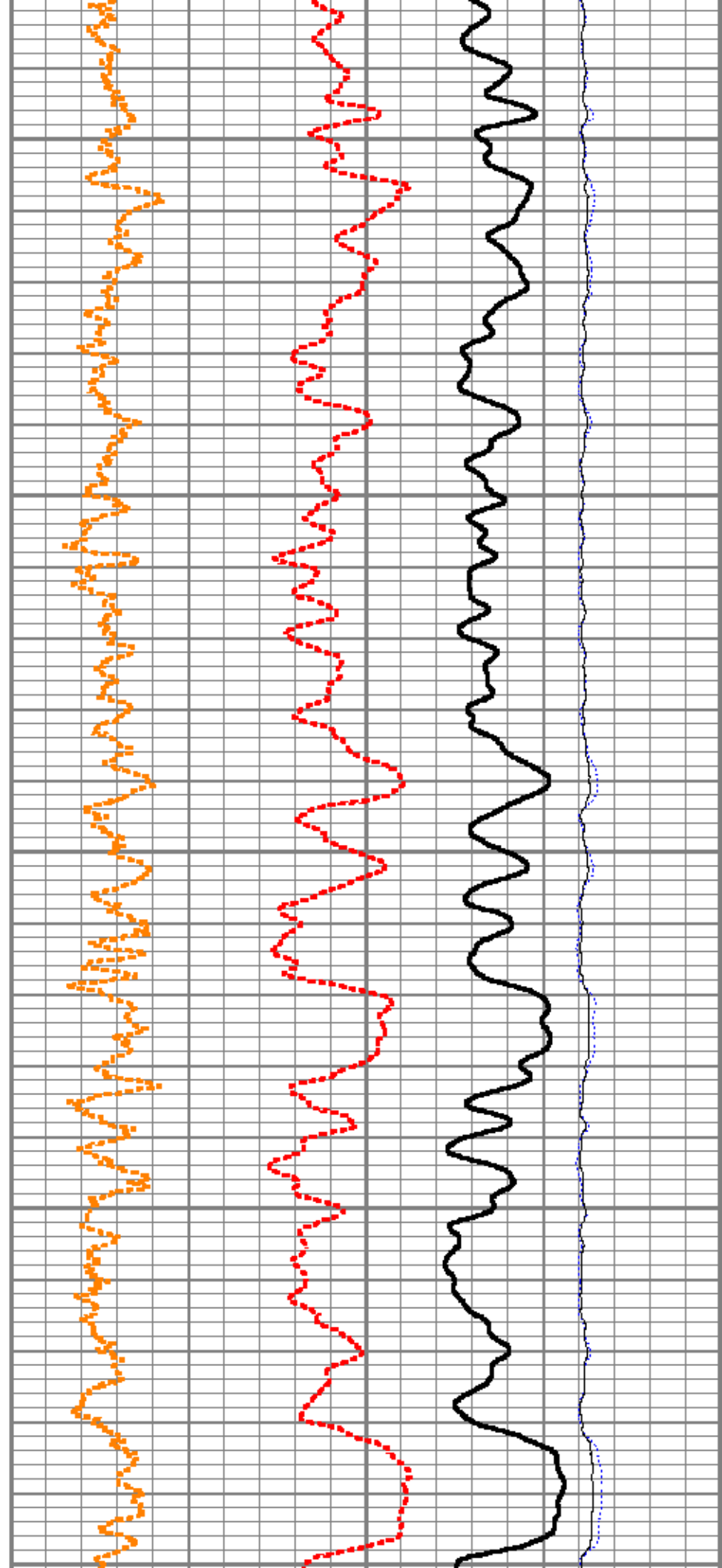


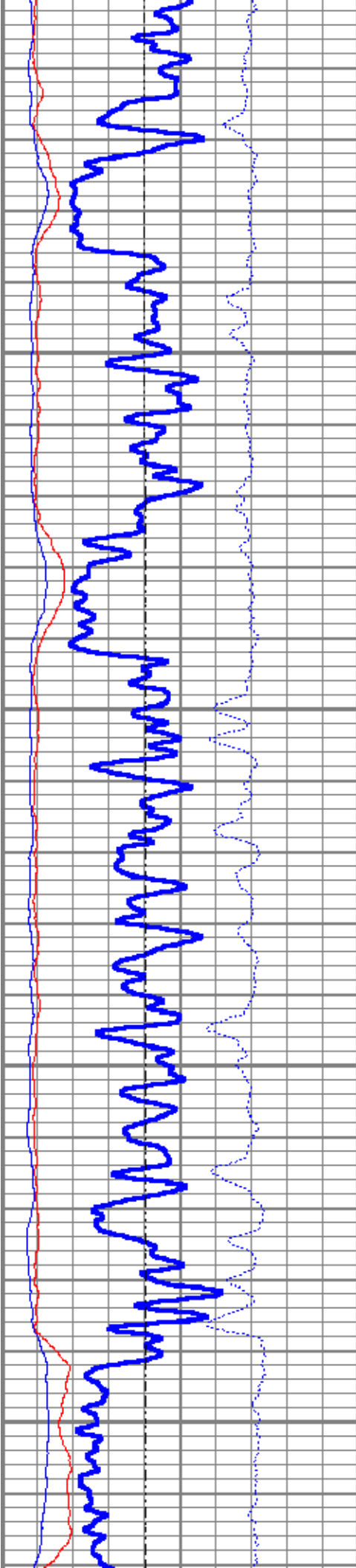


8900

9000

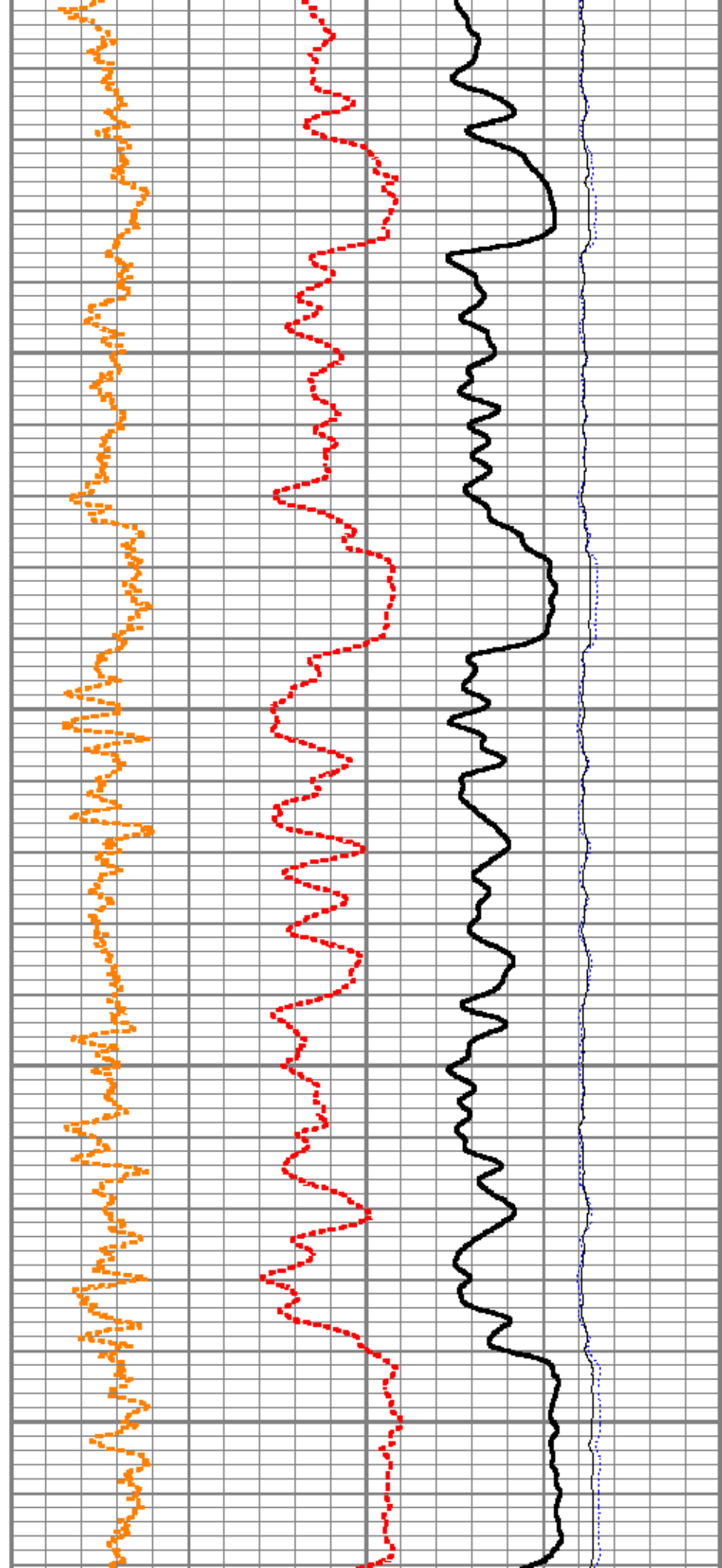
9100

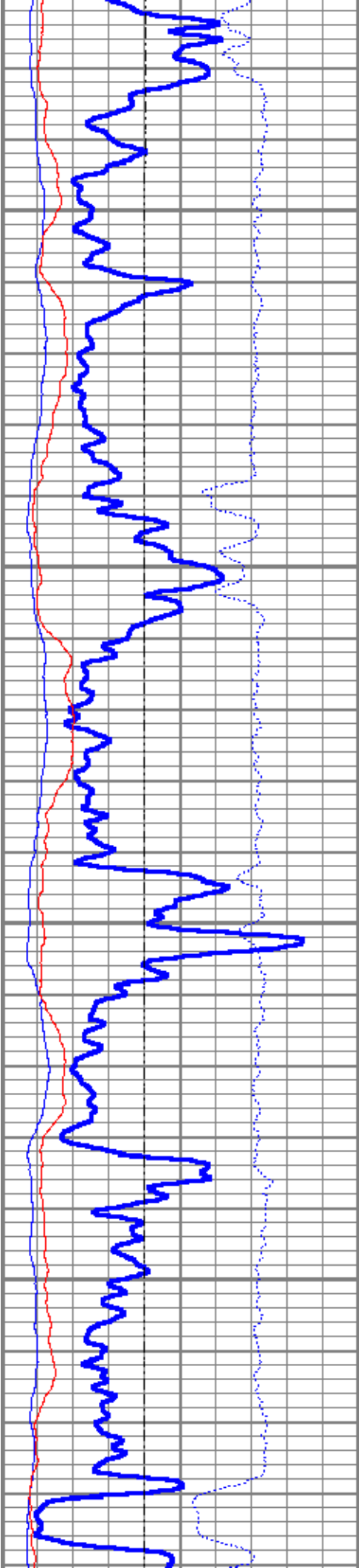




9200

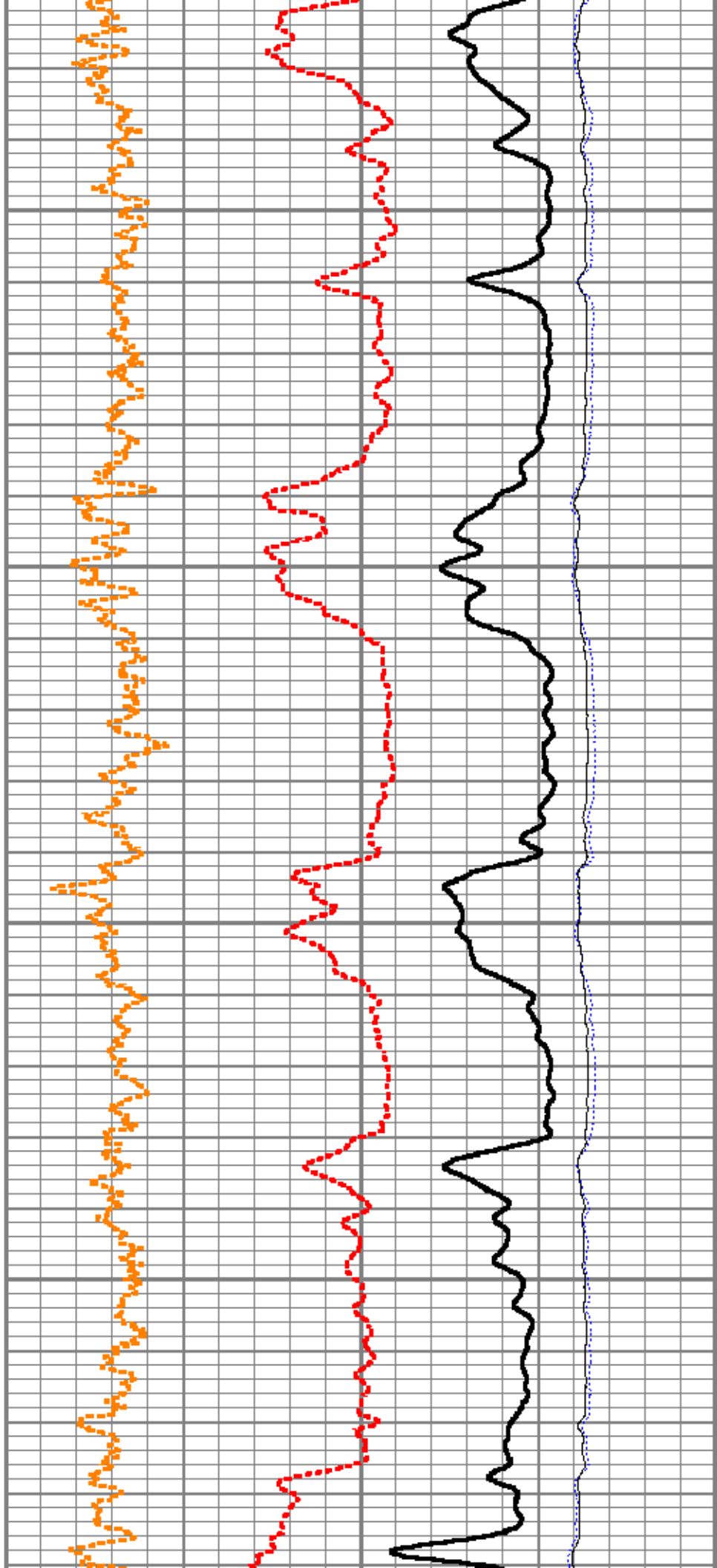
9300

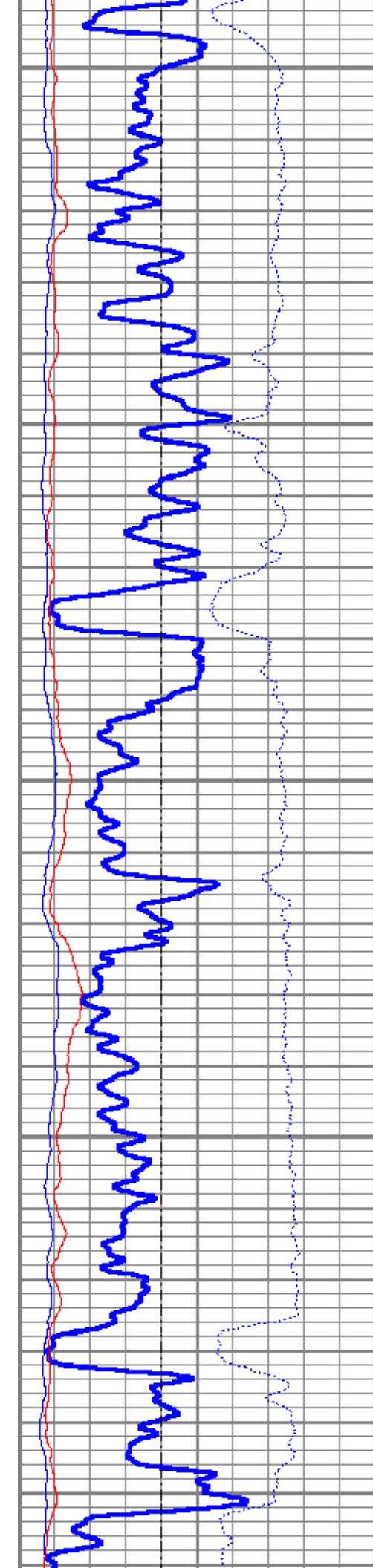




9400

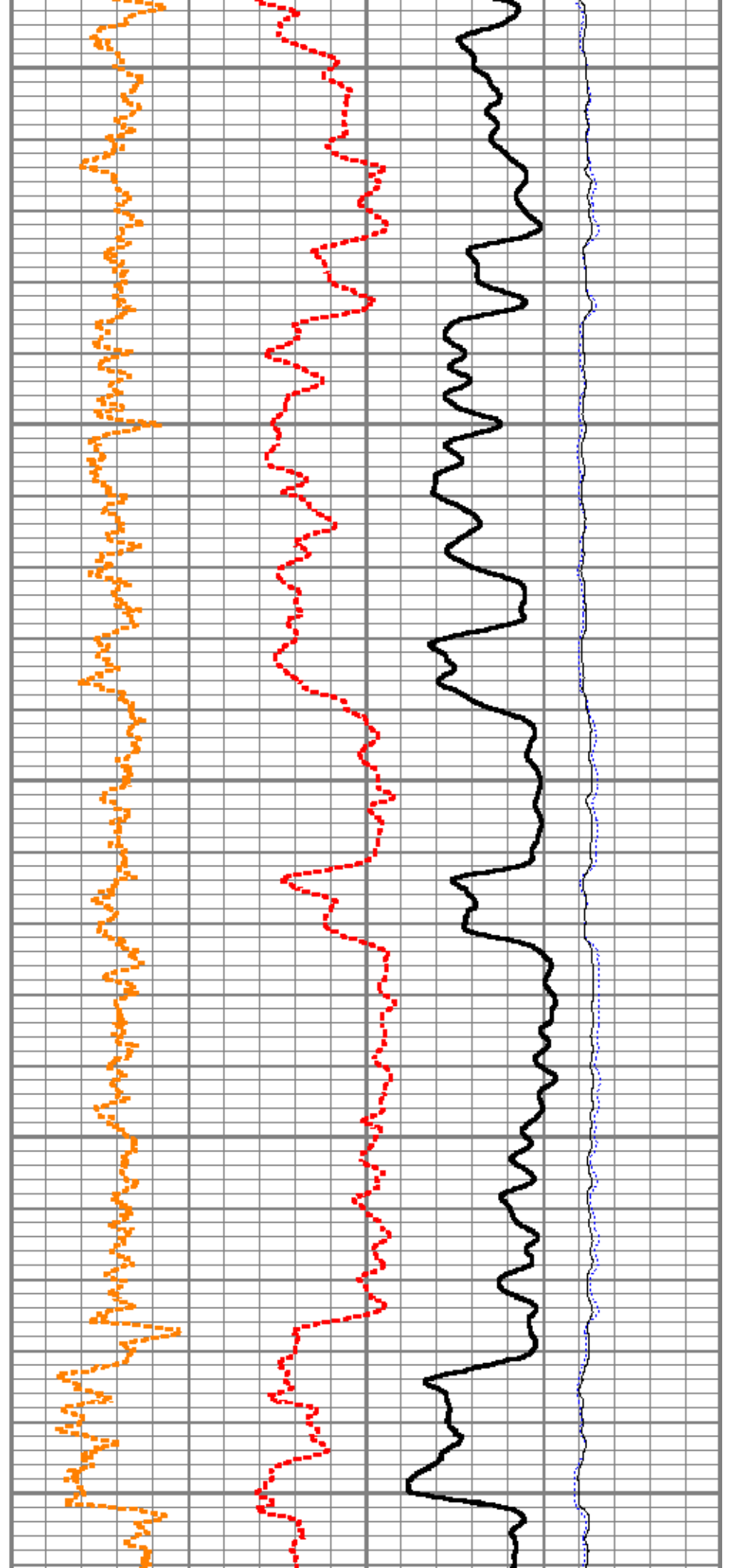
9500

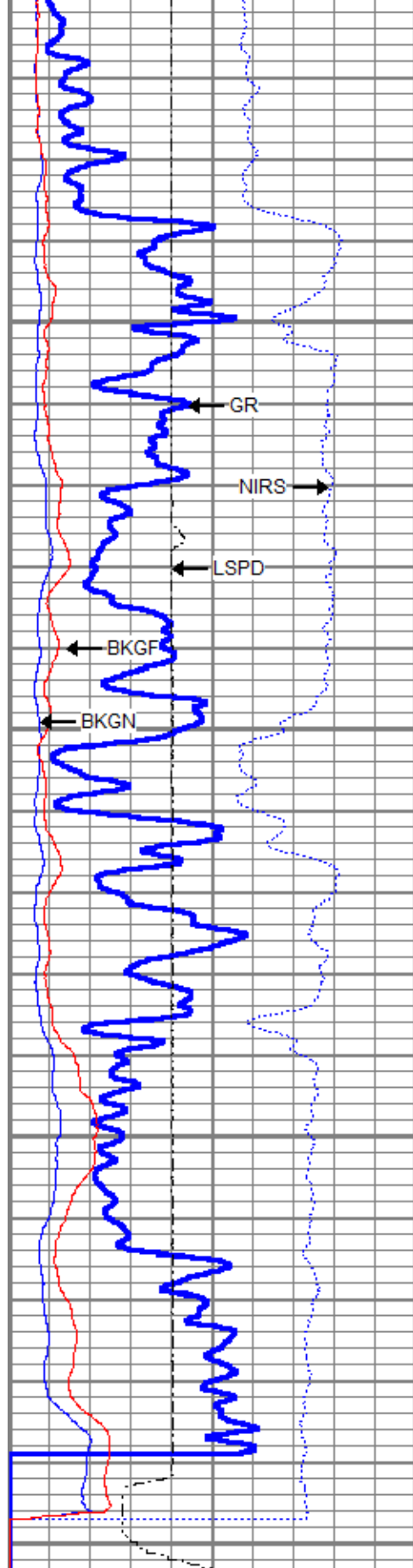




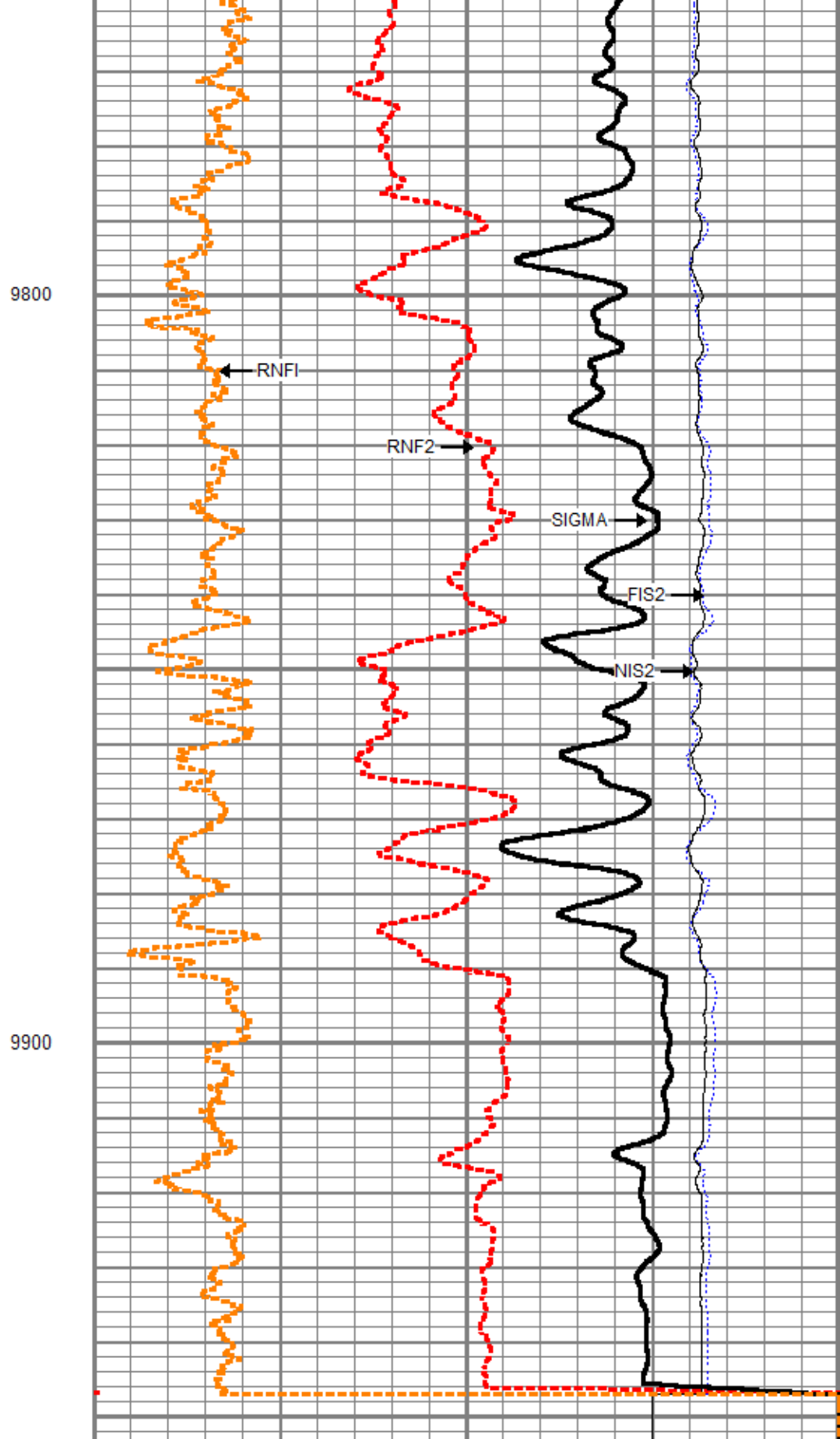
9600

9700





0	Gamma Ray (GAPI)	150
-100	Line Speed (ft/min)	100
0	NIRS	400000
0	BKGN (cps)	4000
0	BKGF (cps)	2000

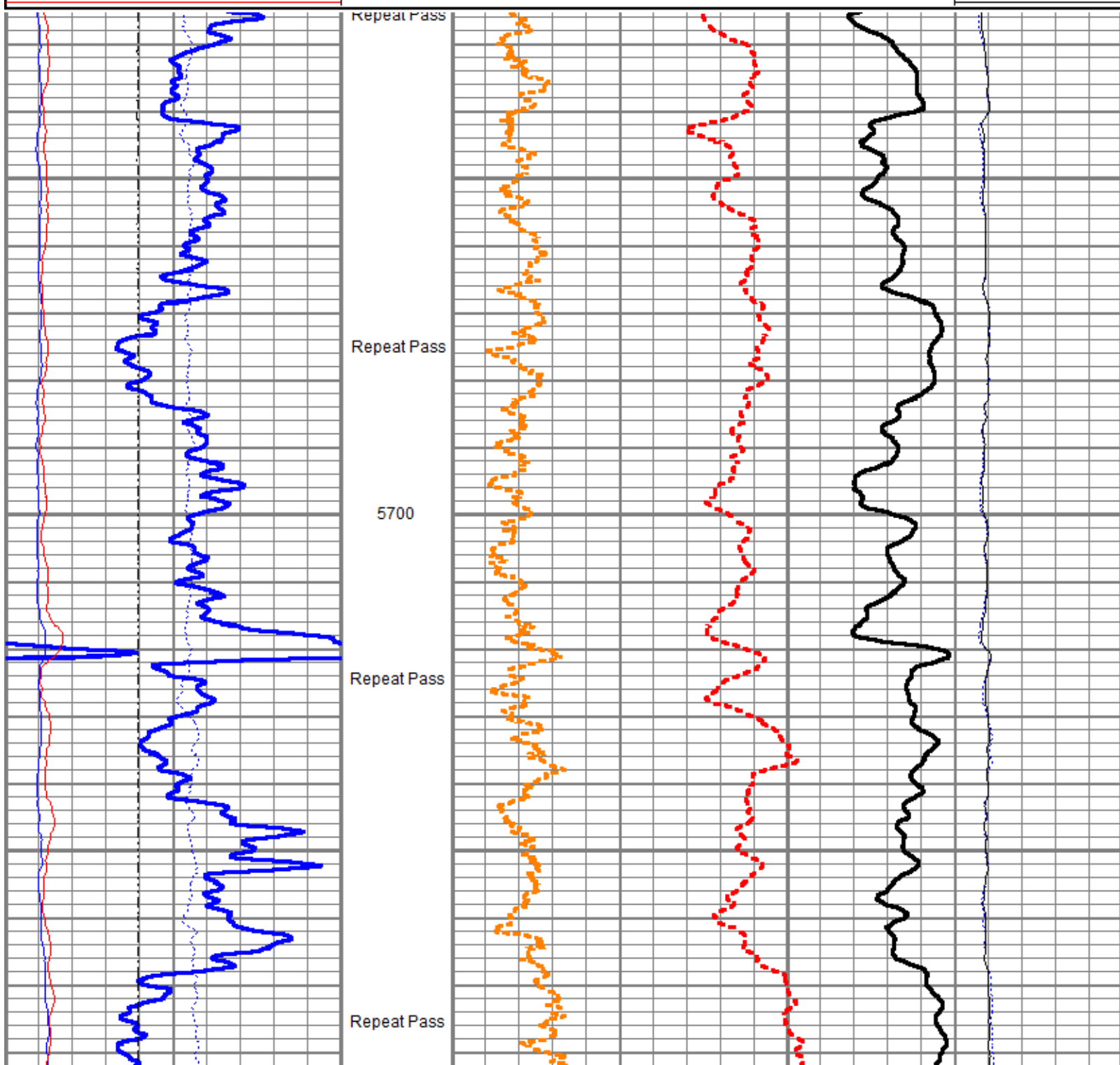


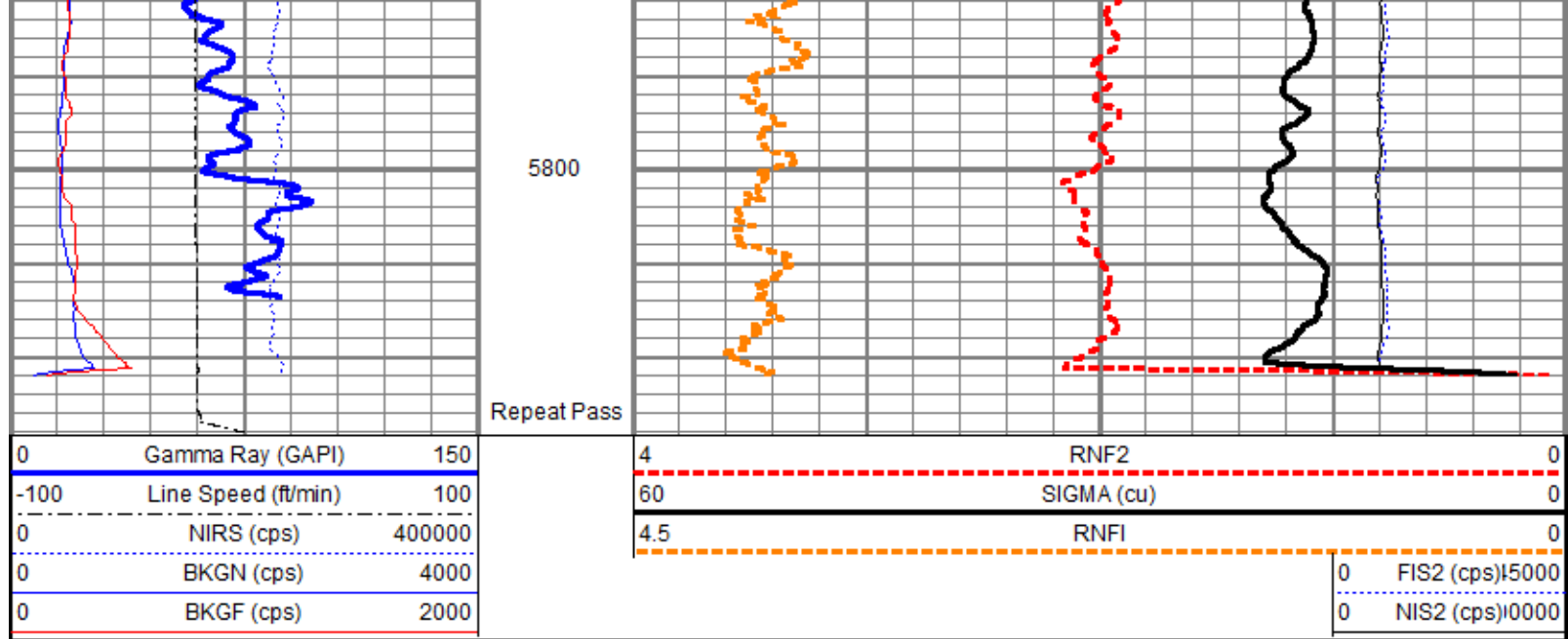
4	RNF2	0
60	SIGMA (cu)	0
4.5	RNF1	0
0	FIS2	45000
0	NIS2	100000

Repeat Pass

Database File tep\clough_nr_313-3\tep_clough_nr_313-3_pn_nov-26-2018.db
 Dataset Pathname repeat.2
 Presentation Format ros_pdn_hunter
 Dataset Creation Mon Nov 26 23:11:18 2018
 Charted by Depth in Feet scaled 1:240

0	Gamma Ray (GAPI)	150	4	RNF2	0
-100	Line Speed (ft/min)	100	60	SIGMA (cu)	0
0	NIRS (cps)	400000	4.5	RNFI	0
0	BKGN (cps)	4000			0 FIS2 (cps) 15000
0	BKGF (cps)	2000			0 NIS2 (cps) 10000





Sensor	Offset (ft)	Schematic	Description	Length (ft)	O.D. (in)	Weight (lb)
TCUTEMP	14.69		Titan CHD-16875 GO	1.03	1.69	5.40
TCUVOLT	14.69		Titan 1-11/16" Assembled Electric Cable Head w/ 1" Fishing Neck			
GCL_CCL	13.97		HWS_TCU-002 (001705) HWS Telemetry Control Unit (TCU002)	2.30	1.69	10.87
GCL_GR	12.50		HWS_GCL-001 (001475) HWS Gamma Ray Collar Locator (1.6875")	2.69	1.69	13.40
GCL_GR	12.50					
Long	6.25		HWS_RAS-RAS002 (003040) Hunter Well Science Pulsed Neutron Tool	11.75	1.69	55.82
Far	6.25					
Near	6.25					
Anci	6.25					

			HWS_TBN-001 (001724) HWS Terminator Bull Nose (1.6875")	0.25	1.69	0.99
--	--	--	--	------	------	------

Dataset: tep_clough_nr_313-3_pn_nov-26-2018.db: field/well/run1/main1.2
Total length: 18.02 ft
Total weight: 86.48 lb
O.D.: 1.69 in