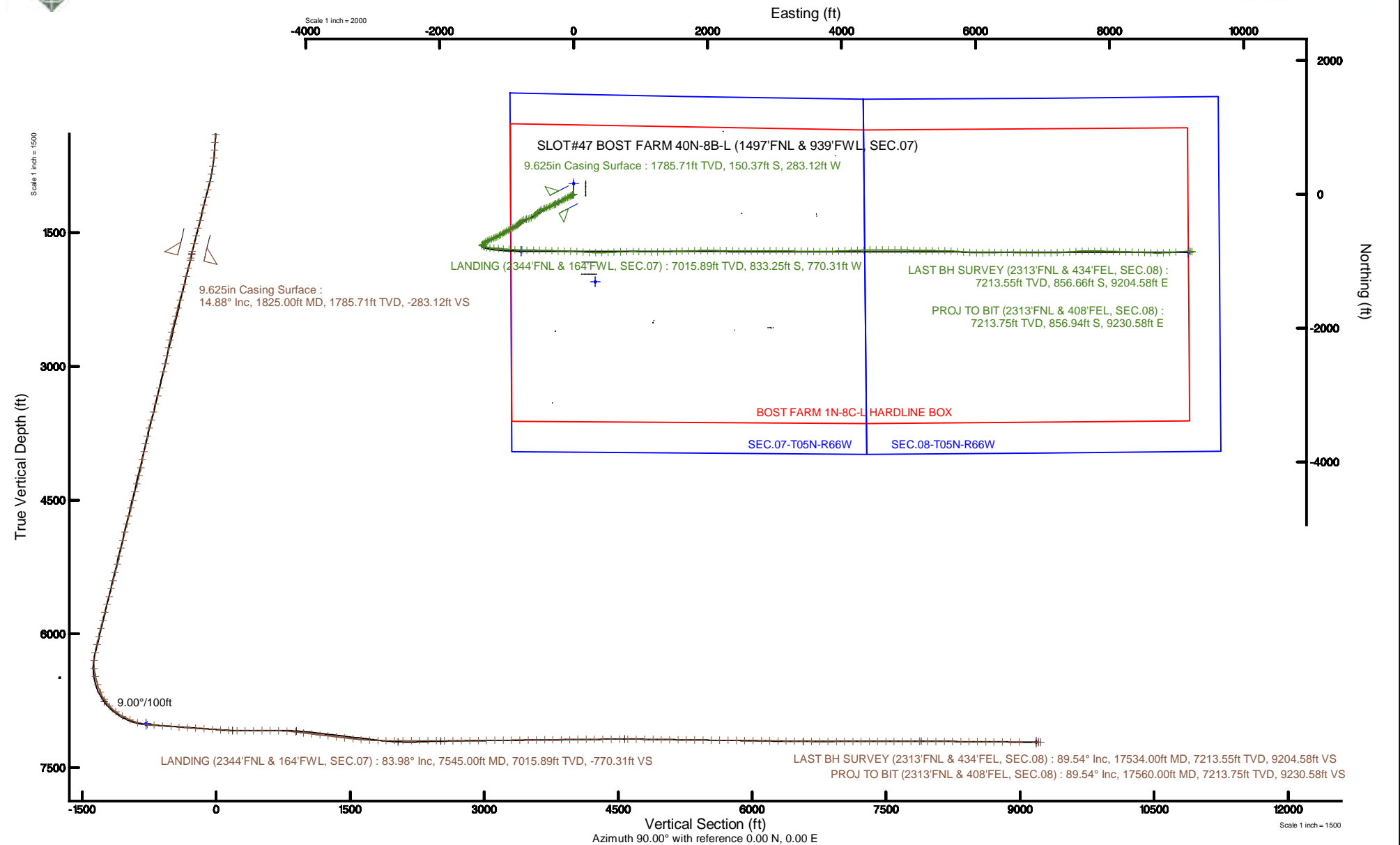


SRC ENERGY

Location: COLORADO Slot: SLOT#47 BOST FARM 40N-8B-L (1497'FNL & 939'FWL, SEC.07)
Field: WELD COUNTY (NAD83,TRUE NORTH) Well: BOST FARM 40N-8B-L
Facility: SEC.07-T05N-R66W Wellbore: BOST FARM 40N-8B-L PWB

Plot reference wellpath is BOST FARM 40N-8B-L (REV-B.0) PWP	Grid System: NAD83 / Lambert Colorado SP, Northern Zone (501), US feet
True vertical depths are referenced to PRECISION 462 (20') (RKB)	North Reference: True north
Measured depths are referenced to PRECISION 462 (20') (RKB)	Scale: True distance
PRECISION 462 (20') (RKB) to Mean Sea Level: 4900 feet	Depths are in feet
Mean Sea Level to Mud line (At Slot: SLOT#47 BOST FARM 40N-8B-L (1497'FNL & 939'FWL, SEC.07)): 0 feet	Created by: hanisab on 2019-02-05
Coordinates are in feet referenced to Slot	Database: WellArchitectDB





Actual Wellpath Report

BOST FARM 40N-8B-L AWP

Page 1 of 10



REFERENCE WELLPATH IDENTIFICATION

Operator	SRC ENERGY	Slot	SLOT#47 BOST FARM 40N-8B-L (1497'FNL & 939'FWL, SEC.07)
Area	COLORADO	Well	BOST FARM 40N-8B-L
Field	WELD COUNTY (NAD83,TRUE NORTH)	Wellbore	BOST FARM 40N-8B-L AWB
Facility	SEC.07-T05N-R66W		

REPORT SETUP INFORMATION

Projection System	NAD83 / Lambert Colorado SP, Northern Zone (501), US feet	Software System	WellArchitect® 5.1
North Reference	True	User	Hanisab
Scale	0.999961	Report Generated	2/4/2019 at 11:44:32 PM
Convergence at slot	0.43° East	Database/Source file	WellArchitectDB/BOST_FARM_40N-8B-L_AWP.xml

WELLPATH LOCATION

	Local coordinates		Grid coordinates		Geographic coordinates	
	North[ft]	East[ft]	Easting[US ft]	Northing[US ft]	Latitude	Longitude
Slot Location	1308.59	-324.94	3186826.76	1395615.83	40°25'02.737"N	104°49'44.450"W
Facility Reference Pt			3187161.59	1394309.79	40°24'49.806"N	104°49'40.249"W
Field Reference Pt			3171284.48	1426358.81	40°30'07.643"N	104°53'02.634"W

WELLPATH DATUM

Calculation method	Minimum curvature	PRECISION 462 (20') (RKB) to Facility Vertical Datum	4900.00ft
Horizontal Reference Pt	Slot	PRECISION 462 (20') (RKB) to Mean Sea Level	4900.00ft
Vertical Reference Pt	PRECISION 462 (20') (RKB)	PRECISION 462 (20') (RKB) to Mud Line at Slot (SLOT#47 BOST FARM 40N-8B-L (1497'FNL & 939'FWL, SEC.07))	4900.00ft
MD Reference Pt	PRECISION 462 (20') (RKB)	Section Origin	N 0.00, E 0.00 ft
Field Vertical Reference	Mean Sea Level	Section Azimuth	90.00°



Actual Wellpath Report

BOST FARM 40N-8B-L AWP

Page 2 of 10



REFERENCE WELLPATH IDENTIFICATION

Operator	SRC ENERGY	Slot	SLOT#47 BOST FARM 40N-8B-L (1497'FNL & 939'FWL, SEC.07)
Area	COLORADO	Well	BOST FARM 40N-8B-L
Field	WELD COUNTY (NAD83,TRUE NORTH)	Wellbore	BOST FARM 40N-8B-L AWP
Facility	SEC.07-T05N-R66W		

WELLPATH DATA (192 stations) † = interpolated/extrapolated station

MD [ft]	Inclination [°]	Azimuth [°]	TVD [ft]	Vert Sect [ft]	North [ft]	East [ft]	DLS [°/100ft]	Comments
0.00†	0.000	183.180	0.00	0.00	0.00	0.00	0.00	
20.00	0.000	183.180	20.00	0.00	0.00	0.00	0.00	
137.00	0.340	183.180	137.00	-0.02	-0.35	-0.02	0.29	
226.00	0.270	220.780	226.00	-0.17	-0.77	-0.17	0.23	
309.00	1.690	234.020	308.98	-1.29	-1.64	-1.29	1.72	
399.00	4.440	233.100	398.85	-5.15	-4.51	-5.15	3.06	
489.00	4.420	242.560	488.58	-11.01	-8.20	-11.01	0.81	
579.00	4.810	244.480	578.29	-17.50	-11.42	-17.50	0.47	
669.00	6.870	239.210	667.82	-25.53	-15.80	-25.53	2.36	
759.00	10.340	238.280	756.79	-37.02	-22.81	-37.02	3.86	
849.00	11.650	243.730	845.14	-52.04	-31.08	-52.04	1.86	
939.00	14.310	244.240	932.83	-70.21	-39.93	-70.21	2.96	
1029.00	16.050	241.590	1019.69	-91.18	-50.69	-91.18	2.08	
1119.00	16.610	243.550	1106.06	-113.64	-62.34	-113.64	0.87	
1209.00	15.730	242.450	1192.50	-135.97	-73.71	-135.97	1.04	
1299.00	15.900	241.870	1279.09	-157.66	-85.16	-157.66	0.26	
1389.00	16.230	244.060	1365.58	-179.84	-96.48	-179.84	0.77	
1479.00	16.000	243.740	1452.04	-202.27	-107.47	-202.27	0.27	
1569.00	15.410	242.700	1538.68	-224.02	-118.44	-224.02	0.73	
1659.00	15.230	241.630	1625.48	-245.05	-129.54	-245.05	0.37	
1749.00	15.260	240.590	1712.31	-265.77	-140.98	-265.77	0.31	
1776.00	15.080	241.420	1738.37	-271.95	-144.40	-271.95	1.04	
1850.00	14.780	242.870	1809.87	-288.80	-153.31	-288.80	0.65	
1944.00	15.810	244.920	1900.54	-311.07	-164.21	-311.07	1.24	
2036.00	15.660	245.500	1989.10	-333.72	-174.67	-333.72	0.24	
2130.00	15.780	247.590	2079.58	-357.08	-184.80	-357.08	0.62	
2222.00	15.830	248.520	2168.10	-380.32	-194.17	-380.32	0.28	
2316.00	15.810	248.850	2258.54	-404.20	-203.48	-404.20	0.10	
2408.00	15.710	251.790	2347.09	-427.72	-211.89	-427.72	0.87	
2500.00	15.640	249.310	2435.67	-451.15	-220.17	-451.15	0.73	



Actual Wellpath Report

BOST FARM 40N-8B-L AWP

Page 3 of 10



REFERENCE WELLPATH IDENTIFICATION

Operator	SRC ENERGY	Slot	SLOT#47 BOST FARM 40N-8B-L (1497'FNL & 939'FWL, SEC.07)
Area	COLORADO	Well	BOST FARM 40N-8B-L
Field	WELD COUNTY (NAD83,TRUE NORTH)	Wellbore	BOST FARM 40N-8B-L AWB
Facility	SEC.07-T05N-R66W		

WELLPATH DATA (192 stations)

MD [ft]	Inclination [°]	Azimuth [°]	TVD [ft]	Vert Sect [ft]	North [ft]	East [ft]	DLS [°/100ft]	Comments
2593.00	15.560	245.960	2525.24	-474.27	-229.68	-474.27	0.97	
2686.00	15.790	236.420	2614.80	-496.21	-241.76	-496.21	2.78	
2780.00	15.760	224.480	2705.28	-515.81	-257.95	-515.81	3.45	
2872.00	15.580	223.310	2793.86	-533.04	-275.85	-533.04	0.40	
2964.00	15.620	228.860	2882.48	-550.84	-292.99	-550.84	1.62	
3058.00	15.620	228.790	2973.01	-569.90	-309.65	-569.90	0.02	
3152.00	15.590	232.300	3063.54	-589.41	-325.72	-589.41	1.00	
3337.00	15.700	246.090	3241.75	-631.98	-351.07	-631.98	2.01	
3430.00	15.030	249.800	3331.43	-654.80	-360.34	-654.80	1.28	
3522.00	14.440	253.840	3420.41	-677.01	-367.65	-677.01	1.29	
3616.00	15.310	256.830	3511.26	-700.35	-373.74	-700.35	1.23	
3709.00	15.390	257.350	3600.94	-724.35	-379.24	-724.35	0.17	
3803.00	15.580	247.980	3691.54	-748.23	-386.70	-748.23	2.67	
3895.00	16.010	235.730	3780.09	-770.17	-398.48	-770.17	3.65	
3988.00	15.740	227.160	3869.56	-790.02	-414.28	-790.02	2.54	
4081.00	15.690	221.830	3959.09	-807.66	-432.23	-807.66	1.55	
4174.00	15.210	225.220	4048.73	-824.70	-450.20	-824.70	1.10	
4267.00	15.320	234.460	4138.46	-843.36	-465.93	-843.36	2.62	
4360.00	16.110	236.240	4227.98	-864.09	-480.25	-864.09	1.00	
4454.00	15.630	241.030	4318.40	-886.01	-493.63	-886.01	1.48	
4548.00	16.300	242.590	4408.78	-908.80	-505.83	-908.80	0.85	
4643.00	16.080	241.420	4500.01	-932.19	-518.26	-932.19	0.41	
4736.00	16.070	245.240	4589.38	-955.19	-529.82	-955.19	1.14	
4829.00	15.600	244.560	4678.85	-978.17	-540.58	-978.17	0.54	
4923.00	15.480	242.960	4769.41	-1000.76	-551.71	-1000.76	0.47	
5017.00	15.570	238.860	4859.99	-1022.73	-563.94	-1022.73	1.17	
5111.00	15.560	236.510	4950.54	-1044.04	-577.42	-1044.04	0.67	
5203.00	15.530	237.340	5039.17	-1064.70	-590.87	-1064.70	0.24	
5297.00	15.490	239.110	5129.75	-1086.07	-604.11	-1086.07	0.51	
5390.00	15.310	240.750	5219.41	-1107.44	-616.48	-1107.44	0.51	



Actual Wellpath Report

BOST FARM 40N-8B-L AWP

Page 4 of 10



REFERENCE WELLPATH IDENTIFICATION

Operator	SRC ENERGY	Slot	SLOT#47 BOST FARM 40N-8B-L (1497'FNL & 939'FWL, SEC.07)
Area	COLORADO	Well	BOST FARM 40N-8B-L
Field	WELD COUNTY (NAD83,TRUE NORTH)	Wellbore	BOST FARM 40N-8B-L AWB
Facility	SEC.07-T05N-R66W		

WELLPATH DATA (192 stations) † = interpolated/extrapolated station

MD [ft]	Inclination [°]	Azimuth [°]	TVD [ft]	Vert Sect [ft]	North [ft]	East [ft]	DLS [°/100ft]	Comments
5486.00	15.440	242.090	5311.98	-1129.79	-628.66	-1129.79	0.39	
5580.00	15.420	243.960	5402.59	-1152.07	-640.00	-1152.07	0.53	
5672.00	15.520	247.380	5491.26	-1174.42	-650.11	-1174.42	1.00	
5765.00	15.720	250.560	5580.83	-1197.79	-659.09	-1197.79	0.95	
5858.00	15.760	249.710	5670.34	-1221.52	-667.66	-1221.52	0.25	
5951.00	15.910	247.500	5759.81	-1245.14	-676.92	-1245.14	0.67	
6043.00	15.970	243.180	5848.28	-1268.08	-687.45	-1268.08	1.29	
6136.00	15.950	238.900	5937.69	-1290.44	-699.82	-1290.44	1.27	
6229.00	15.980	237.180	6027.11	-1312.14	-713.36	-1312.14	0.51	
6322.00	16.160	232.790	6116.48	-1333.21	-728.13	-1333.21	1.32	
6416.00	15.850	229.150	6206.83	-1353.34	-744.44	-1353.34	1.12	
6508.00	9.250	210.120	6296.62	-1366.57	-759.07	-1366.57	8.37	
6601.00	7.930	129.820	6388.86	-1365.39	-769.68	-1365.39	11.93	
6693.00	13.490	105.980	6479.27	-1350.18	-776.71	-1350.18	7.61	
6787.00	17.330	110.320	6569.87	-1326.50	-784.59	-1326.50	4.26	
6879.00	25.120	105.750	6655.57	-1294.81	-794.66	-1294.81	8.65	
6971.00	33.480	95.700	6735.78	-1250.66	-802.50	-1250.66	10.51	
7066.00	43.770	90.920	6809.91	-1191.56	-805.64	-1191.56	11.27	
7158.00	51.680	95.020	6871.77	-1123.67	-809.32	-1123.67	9.21	
7250.00	61.700	96.620	6922.23	-1047.29	-817.17	-1047.29	10.99	
7343.00	66.310	94.290	6962.98	-964.10	-825.08	-964.10	5.44	
7435.00	72.880	92.080	6995.05	-878.06	-829.83	-878.06	7.49	
7529.00	83.620	91.640	7014.16	-786.21	-832.80	-786.21	11.43	
7545.00†	83.976	91.580	7015.89	-770.31	-833.25	-770.31	2.26	LANDING (2344'FNL & 164'FWL, SEC.07)
7622.00	85.690	91.290	7022.82	-693.65	-835.17	-693.65	2.26	
7717.00	85.560	90.320	7030.07	-598.94	-836.50	-598.94	1.03	
7810.00	85.720	90.730	7037.14	-506.21	-837.35	-506.21	0.47	
7903.00	85.590	92.130	7044.19	-413.51	-839.67	-413.51	1.51	
7997.00	86.270	92.150	7050.86	-319.81	-843.17	-319.81	0.72	
8089.00	86.400	92.170	7056.74	-228.07	-846.63	-228.07	0.14	



Actual Wellpath Report

BOST FARM 40N-8B-L AWP

Page 5 of 10



REFERENCE WELLPATH IDENTIFICATION

Operator	SRC ENERGY	Slot	SLOT#47 BOST FARM 40N-8B-L (1497'FNL & 939'FWL, SEC.07)
Area	COLORADO	Well	BOST FARM 40N-8B-L
Field	WELD COUNTY (NAD83,TRUE NORTH)	Wellbore	BOST FARM 40N-8B-L AWB
Facility	SEC.07-T05N-R66W		

WELLPATH DATA (192 stations)

MD [ft]	Inclination [°]	Azimuth [°]	TVD [ft]	Vert Sect [ft]	North [ft]	East [ft]	DLS [°/100ft]	Comments
8182.00	86.090	92.250	7062.83	-135.33	-850.21	-135.33	0.34	
8275.00	86.120	92.420	7069.15	-42.63	-853.99	-42.63	0.19	
8368.00	86.180	92.830	7075.39	50.07	-858.24	50.07	0.44	
8460.00	87.050	92.800	7080.82	141.79	-862.75	141.79	0.95	
8552.00	88.860	93.500	7084.11	233.59	-867.80	233.59	2.11	
8645.00	90.340	91.710	7084.76	326.49	-872.02	326.49	2.50	
8738.00	90.340	89.160	7084.20	419.48	-872.73	419.48	2.74	
8832.00	90.250	87.050	7083.72	513.42	-869.62	513.42	2.25	
8924.00	90.180	86.920	7083.37	605.29	-864.78	605.29	0.16	
9018.00	87.970	87.640	7084.89	699.16	-860.32	699.16	2.47	
9113.00	85.690	88.480	7090.14	793.96	-857.11	793.96	2.56	
9206.00	83.870	89.910	7098.61	886.56	-855.81	886.56	2.48	
9298.00	83.120	91.560	7109.03	977.95	-856.98	977.95	1.96	
9391.00	82.940	91.660	7120.31	1070.23	-859.57	1070.23	0.22	
9483.00	83.000	90.400	7131.57	1161.52	-861.22	1161.52	1.36	
9577.00	83.180	89.080	7142.88	1254.83	-860.79	1254.83	1.41	
9669.00	83.090	88.810	7153.88	1346.16	-859.11	1346.16	0.31	
9762.00	83.150	88.680	7165.02	1438.47	-857.09	1438.47	0.15	
9855.00	83.710	88.270	7175.66	1530.82	-854.63	1530.82	0.74	
9948.00	85.220	88.410	7184.63	1623.35	-851.95	1623.35	1.63	
10041.00	86.860	87.880	7191.06	1716.07	-848.94	1716.07	1.85	
10135.00	88.150	87.720	7195.15	1809.91	-845.34	1809.91	1.38	
10228.00	89.140	88.620	7197.35	1902.84	-842.37	1902.84	1.44	
10322.00	90.120	89.890	7197.95	1996.83	-841.15	1996.83	1.71	
10416.00	90.430	91.010	7197.50	2090.82	-841.89	2090.82	1.24	
10509.00	89.780	91.410	7197.33	2183.80	-843.85	2183.80	0.82	
10603.00	89.910	90.940	7197.59	2277.78	-845.78	2277.78	0.52	
10697.00	89.820	90.680	7197.81	2371.77	-847.11	2371.77	0.29	
10790.00	89.880	90.780	7198.05	2464.76	-848.29	2464.76	0.13	
10883.00	89.850	90.860	7198.27	2557.75	-849.62	2557.75	0.09	



Actual Wellpath Report

BOST FARM 40N-8B-L AWP

Page 6 of 10



REFERENCE WELLPATH IDENTIFICATION

Operator	SRC ENERGY	Slot	SLOT#47 BOST FARM 40N-8B-L (1497'FNL & 939'FWL, SEC.07)
Area	COLORADO	Well	BOST FARM 40N-8B-L
Field	WELD COUNTY (NAD83,TRUE NORTH)	Wellbore	BOST FARM 40N-8B-L AWB
Facility	SEC.07-T05N-R66W		

WELLPATH DATA (192 stations)

MD [ft]	Inclination [°]	Azimuth [°]	TVD [ft]	Vert Sect [ft]	North [ft]	East [ft]	DLS [°/100ft]	Comments
10977.00	89.880	89.740	7198.49	2651.75	-850.11	2651.75	1.19	
11071.00	91.690	89.540	7197.20	2745.73	-849.52	2745.73	1.94	
11164.00	90.430	88.700	7195.48	2838.70	-848.10	2838.70	1.63	
11258.00	90.490	89.420	7194.73	2932.69	-846.55	2932.69	0.77	
11352.00	90.490	90.070	7193.92	3026.68	-846.14	3026.68	0.69	
11445.00	90.490	90.850	7193.13	3119.68	-846.88	3119.68	0.84	
11539.00	90.620	91.200	7192.22	3213.66	-848.56	3213.66	0.40	
11632.00	90.710	91.140	7191.14	3306.63	-850.46	3306.63	0.12	
11725.00	90.550	90.950	7190.12	3399.61	-852.16	3399.61	0.27	
11817.00	90.460	90.850	7189.31	3491.59	-853.60	3491.59	0.15	
11911.00	90.650	90.730	7188.40	3585.58	-854.90	3585.58	0.24	
12003.00	90.520	89.660	7187.46	3677.57	-855.21	3677.57	1.17	
12096.00	90.580	88.640	7186.56	3770.56	-853.83	3770.56	1.10	
12189.00	90.460	88.280	7185.72	3863.52	-851.33	3863.52	0.41	
12282.00	90.620	88.150	7184.84	3956.47	-848.44	3956.47	0.22	
12374.00	90.650	88.150	7183.82	4048.42	-845.47	4048.42	0.03	
12467.00	90.620	87.200	7182.79	4141.33	-841.69	4141.33	1.02	
12561.00	90.520	88.340	7181.86	4235.26	-838.04	4235.26	1.22	
12655.00	90.550	88.460	7180.98	4329.22	-835.41	4329.22	0.13	
12748.00	90.580	88.710	7180.06	4422.18	-833.12	4422.18	0.27	
12842.00	90.650	89.520	7179.05	4516.17	-831.66	4516.17	0.86	
12935.00	89.320	89.840	7179.08	4609.16	-831.15	4609.16	1.47	
13028.00	89.170	90.030	7180.30	4702.15	-831.04	4702.15	0.26	
13122.00	89.230	90.610	7181.62	4796.14	-831.56	4796.14	0.62	
13216.00	89.260	91.330	7182.85	4890.12	-833.16	4890.12	0.77	
13308.00	89.320	91.970	7183.99	4982.07	-835.80	4982.07	0.70	
13401.00	89.050	91.670	7185.32	5075.02	-838.76	5075.02	0.43	
13495.00	89.200	91.240	7186.75	5168.98	-841.14	5168.98	0.48	
13588.00	89.660	90.550	7187.68	5261.96	-842.60	5261.96	0.89	
13683.00	89.080	90.180	7188.72	5356.95	-843.20	5356.95	0.72	



Actual Wellpath Report

BOST FARM 40N-8B-L AWP

Page 7 of 10



REFERENCE WELLPATH IDENTIFICATION

Operator	SRC ENERGY	Slot	SLOT#47 BOST FARM 40N-8B-L (1497'FNL & 939'FWL, SEC.07)
Area	COLORADO	Well	BOST FARM 40N-8B-L
Field	WELD COUNTY (NAD83,TRUE NORTH)	Wellbore	BOST FARM 40N-8B-L AWB
Facility	SEC.07-T05N-R66W		

WELLPATH DATA (192 stations)

MD [ft]	Inclination [°]	Azimuth [°]	TVD [ft]	Vert Sect [ft]	North [ft]	East [ft]	DLS [°/100ft]	Comments
13776.00	89.200	91.160	7190.12	5449.93	-844.29	5449.93	1.06	
13869.00	89.200	91.390	7191.42	5542.90	-846.36	5542.90	0.25	
13962.00	89.510	91.870	7192.46	5635.86	-849.00	5635.86	0.61	
14056.00	89.940	94.500	7192.92	5729.70	-854.23	5729.70	2.83	
14150.00	89.350	96.260	7193.50	5823.28	-863.04	5823.28	1.97	
14244.00	89.260	93.700	7194.64	5916.91	-871.20	5916.91	2.72	
14338.00	89.380	90.550	7195.75	6010.83	-874.68	6010.83	3.35	
14431.00	88.980	89.100	7197.08	6103.82	-874.40	6103.82	1.62	
14524.00	89.110	89.220	7198.63	6196.79	-873.04	6196.79	0.19	
14616.00	89.050	88.540	7200.11	6288.76	-871.24	6288.76	0.74	
14709.00	89.020	89.580	7201.68	6381.74	-869.71	6381.74	1.12	
14802.00	89.230	90.440	7203.10	6474.73	-869.73	6474.73	0.95	
14896.00	89.080	90.280	7204.48	6568.71	-870.32	6568.71	0.23	
14990.00	89.110	91.450	7205.97	6662.69	-871.74	6662.69	1.24	
15083.00	90.150	90.430	7206.57	6755.67	-873.26	6755.67	1.57	
15176.00	90.180	90.840	7206.30	6848.67	-874.29	6848.67	0.44	
15269.00	90.150	91.160	7206.03	6941.65	-875.92	6941.65	0.35	
15362.00	90.340	89.920	7205.64	7034.65	-876.79	7034.65	1.35	
15455.00	90.150	88.680	7205.24	7127.64	-875.66	7127.64	1.35	
15547.00	90.250	87.640	7204.92	7219.59	-872.70	7219.59	1.14	
15640.00	90.060	87.150	7204.67	7312.49	-868.48	7312.49	0.57	
15732.00	89.970	86.390	7204.64	7404.34	-863.29	7404.34	0.83	
15825.00	89.940	85.070	7204.72	7497.08	-856.37	7497.08	1.42	
15918.00	90.250	87.340	7204.56	7589.87	-850.21	7589.87	2.46	
16011.00	89.970	89.670	7204.38	7682.83	-847.79	7682.83	2.52	
16104.00	90.280	90.380	7204.18	7775.83	-847.83	7775.83	0.83	
16199.00	90.370	91.370	7203.64	7870.82	-849.28	7870.82	1.05	
16291.00	89.660	91.820	7203.62	7962.78	-851.84	7962.78	0.91	
16386.00	89.510	91.790	7204.30	8057.73	-854.83	8057.73	0.16	
16478.00	89.570	91.890	7205.04	8149.68	-857.79	8149.68	0.13	



Actual Wellpath Report

BOST FARM 40N-8B-L AWP

Page 8 of 10



REFERENCE WELLPATH IDENTIFICATION

Operator	SRC ENERGY	Slot	SLOT#47 BOST FARM 40N-8B-L (1497'FNL & 939'FWL, SEC.07)
Area	COLORADO	Well	BOST FARM 40N-8B-L
Field	WELD COUNTY (NAD83,TRUE NORTH)	Wellbore	BOST FARM 40N-8B-L AWB
Facility	SEC.07-T05N-R66W		

WELLPATH DATA (192 stations)

MD [ft]	Inclination [°]	Azimuth [°]	TVD [ft]	Vert Sect [ft]	North [ft]	East [ft]	DLS [°/100ft]	Comments
16572.00	89.630	92.050	7205.70	8243.62	-861.02	8243.62	0.18	
16665.00	89.600	92.030	7206.32	8336.56	-864.33	8336.56	0.04	
16757.00	89.510	92.190	7207.04	8428.50	-867.71	8428.50	0.20	
16850.00	89.690	92.230	7207.69	8521.43	-871.30	8521.43	0.20	
16943.00	89.020	92.760	7208.74	8614.33	-875.35	8614.33	0.92	
17036.00	89.480	90.510	7209.95	8707.28	-878.00	8707.28	2.47	
17131.00	89.630	87.420	7210.69	8802.25	-876.29	8802.25	3.26	
17226.00	89.630	86.850	7211.30	8897.13	-871.54	8897.13	0.60	
17318.00	89.630	84.430	7211.90	8988.85	-864.54	8988.85	2.63	
17503.00	89.510	90.500	7213.29	9173.58	-856.37	9173.58	3.28	
17534.00	89.540	90.600	7213.55	9204.58	-856.66	9204.58	0.34	LAST BH SURVEY (2313'FNL & 434'FEL, SEC.08)
17560.00	89.540	90.600	7213.75	9230.58	-856.94	9230.58	0.00	PROJ TO BIT (2313'FNL & 408'FEL, SEC.08)

HOLE & CASING SECTIONS - Ref Wellbore: BOST FARM 40N-8B-L AWB Ref Wellpath: BOST FARM 40N-8B-L AWP

String/Diameter	Start MD [ft]	End MD [ft]	Interval [ft]	Start TVD [ft]	End TVD [ft]	Start N/S [ft]	Start E/W [ft]	End N/S [ft]	End E/W [ft]
13.5in Open Hole	20.00	1825.00	1805.00	20.00	1785.71	0.00	0.00	-150.37	-283.12
9.625in Casing Surface	20.00	1825.00	1805.00	20.00	1785.71	0.00	0.00	-150.37	-283.12
8.5in Open Hole	1825.00	17560.00	15735.00	1785.71	7213.75	-150.37	-283.12	-856.94	9230.58



Actual Wellpath Report

BOST FARM 40N-8B-L AWP

Page 9 of 10



REFERENCE WELLPATH IDENTIFICATION

Operator	SRC ENERGY	Slot	SLOT#47 BOST FARM 40N-8B-L (1497'FNL & 939'FWL, SEC.07)
Area	COLORADO	Well	BOST FARM 40N-8B-L
Field	WELD COUNTY (NAD83,TRUE NORTH)	Wellbore	BOST FARM 40N-8B-L AWB
Facility	SEC.07-T05N-R66W		

TARGETS

Name	TVD [ft]	North [ft]	East [ft]	Grid East [US ft]	Grid North [US ft]	Latitude	Longitude	Shape
SEC.07-T05N-R66W	24.00	-1308.59	324.95	3187161.59	1394309.79	40°24'49.806"N	104°49'40.249"W	polygon
SEC.08-T05N-R66W	24.00	-1308.59	324.95	3187161.59	1394309.79	40°24'49.806"N	104°49'40.249"W	polygon
BOST FARM 40N-8B-L TOP OF PROD ON PLAT (2362'FNL & 150'FWL, SEC.07)	7006.00	-851.00	-784.73	3186048.52	1394758.95	40°24'54.328"N	104°49'54.595"W	point
BOST FARM 40N-8B-L TOP OF PROD REV-1 (2362'FNL & 150'FWL, SEC.07)	7015.85	-851.00	-784.73	3186048.52	1394758.95	40°24'54.328"N	104°49'54.595"W	point
BOST FARM 40N-8B-L BHL ON PLAT (2326'FNL & 460'FEL, SEC.08)	7193.00	-870.08	9178.29	3196010.99	1394815.26	40°24'54.122"N	104°47'45.791"W	point
BOST FARM 40N-8B-L BHL REV-1 (2326'FNL & 460'FEL, SEC.08)	7213.59	-870.08	9178.29	3196010.99	1394815.26	40°24'54.122"N	104°47'45.791"W	point
BOST FARM 1N-8C-L HARDLINE BOX	7285.00	159.99	1.08	3186826.63	1395775.82	40°25'04.318"N	104°49'44.436"W	polygon

WELLPATH COMPOSITION - Ref Wellbore: BOST FARM 40N-8B-L AWB Ref Wellpath: BOST FARM 40N-8B-L AWP

Start MD [ft]	End MD [ft]	Positional Uncertainty Model	Log Name/Comment	Wellbore
20.00	1776.00	BHI NaviTrak (Standard)	13 1/2" SURFACE SECTION <121-1760>	BOST FARM 40N-8B-L AWB
1776.00	17534.00	BHI AutoTrak Curve (MagCAD+IFR1, Short spacing)	8 1/2" MONOBORE SURVEYS <1850-17534>	BOST FARM 40N-8B-L AWB
17534.00	17560.00	Blind Drilling (std)	Projection to bit	BOST FARM 40N-8B-L AWB



Actual Wellpath Report

BOST FARM 40N-8B-L AWP

Page 10 of 10



REFERENCE WELLPATH IDENTIFICATION

Operator	SRC ENERGY	Slot	SLOT#47 BOST FARM 40N-8B-L (1497'FNL & 939'FWL, SEC.07)
Area	COLORADO	Well	BOST FARM 40N-8B-L
Field	WELD COUNTY (NAD83,TRUE NORTH)	Wellbore	BOST FARM 40N-8B-L AWB
Facility	SEC.07-T05N-R66W		

WELLPATH COMMENTS

MD [ft]	Inclination [°]	Azimuth [°]	TVD [ft]	Comment
7545.00	83.976	91.580	7015.89	LANDING (2344'FNL & 164'FWL, SEC.07)
17534.00	89.540	90.600	7213.55	LAST BH SURVEY (2313'FNL & 434'FEL, SEC.08)
17560.00	89.540	90.600	7213.75	PROJ TO BIT (2313'FNL & 408'FEL, SEC.08)