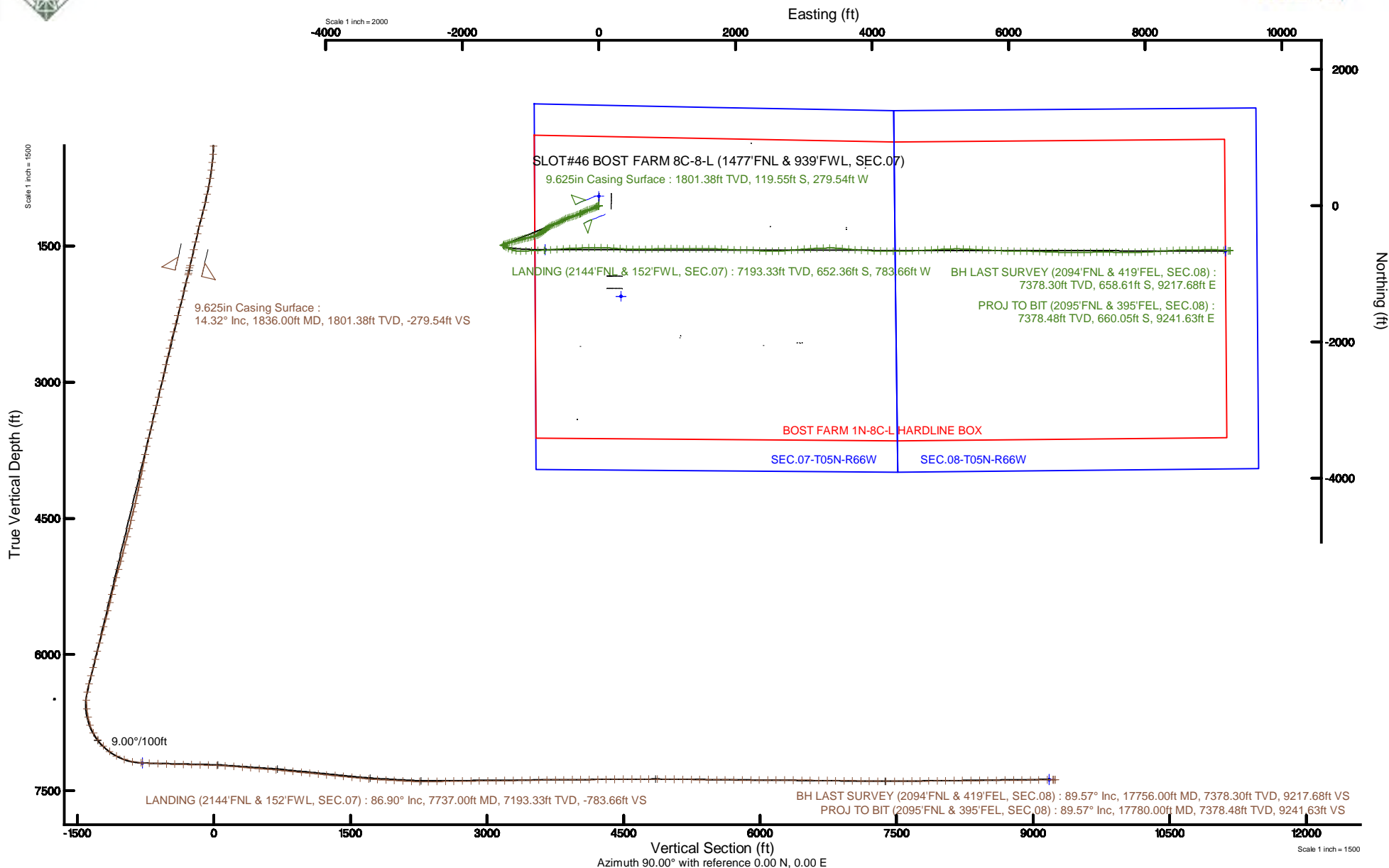


SRC ENERGY

Location: COLORADO Slot: SLOT#46 BOST FARM 8C-8-L (1477'FNL & 939'FWL, SEC.07)
 Field: WELD COUNTY (NAD83,TRUE NORTH) Well: BOST FARM 8C-8-L
 Facility: SEC.07-T05N-R66W Wellbore: BOST FARM 8C-8-L PWB

Plot reference wellpath is BOST FARM 8C-8-L (REV-8.0) PWP	Grid System: NAD83 / Lambert Colorado SP, Northern Zone (501), US feet
True vertical depths are referenced to PRECISION 462 (20') (RKB)	North Reference: True north
Measured depths are referenced to PRECISION 462 (20') (RKB)	Scale: True distance
PRECISION 462 (20') (RKB) to Mean Sea Level: 4901 feet	Depths are in feet
Mean Sea Level to Mud line (At Slot: SLOT#46 BOST FARM 8C-8-L (1477'FNL & 939'FWL, SEC.07)): 0 feet	Created by: hanisab on 2019-02-04
Coordinates are in feet referenced to Slot	Database: WellArchitectDB





Actual Wellpath Report

BOST FARM 8C-8-L AWP

Page 1 of 10



REFERENCE WELLPATH IDENTIFICATION

Operator	SRC ENERGY	Slot	SLOT#46 BOST FARM 8C-8-L (1477'FNL & 939'FWL, SEC.07)
Area	COLORADO	Well	BOST FARM 8C-8-L
Field	WELD COUNTY (NAD83,TRUE NORTH)	Wellbore	BOST FARM 8C-8-L AWB
Facility	SEC.07-T05N-R66W		

REPORT SETUP INFORMATION

Projection System	NAD83 / Lambert Colorado SP, Northern Zone (501), US feet	Software System	WellArchitect® 5.1
North Reference	True	User	Hanisab
Scale	0.999961	Report Generated	2/4/2019 at 11:43:14 PM
Convergence at slot	0.43° East	Database/Source file	WellArchitectDB/BOST_FARM_8C-8-L_AWP.xml

WELLPATH LOCATION

	Local coordinates		Grid coordinates		Geographic coordinates	
	North[ft]	East[ft]	Easting[US ft]	Northing[US ft]	Latitude	Longitude
Slot Location	1328.63	-324.94	3186826.61	1395635.87	40°25'02.935"N	104°49'44.450"W
Facility Reference Pt			3187161.59	1394309.79	40°24'49.806"N	104°49'40.249"W
Field Reference Pt			3171284.48	1426358.81	40°30'07.643"N	104°53'02.634"W

WELLPATH DATUM

Calculation method	Minimum curvature	PRECISION 462 (20') (RKB) to Facility Vertical Datum	4901.00ft
Horizontal Reference Pt	Slot	PRECISION 462 (20') (RKB) to Mean Sea Level	4901.00ft
Vertical Reference Pt	PRECISION 462 (20') (RKB)	PRECISION 462 (20') (RKB) to Mud Line at Slot (SLOT#46 BOST FARM 8C-8-L (1477'FNL & 939'FWL, SEC.07))	4901.00ft
MD Reference Pt	PRECISION 462 (20') (RKB)	Section Origin	N 0.00, E 0.00 ft
Field Vertical Reference	Mean Sea Level	Section Azimuth	90.00°



Actual Wellpath Report

BOST FARM 8C-8-L AWP

Page 2 of 10



REFERENCE WELLPATH IDENTIFICATION

Operator	SRC ENERGY	Slot	SLOT#46 BOST FARM 8C-8-L (1477'FNL & 939'FWL, SEC.07)
Area	COLORADO	Well	BOST FARM 8C-8-L
Field	WELD COUNTY (NAD83,TRUE NORTH)	Wellbore	BOST FARM 8C-8-L AWB
Facility	SEC.07-T05N-R66W		

WELLPATH DATA (196 stations) † = interpolated/extrapolated station

MD [ft]	Inclination [°]	Azimuth [°]	TVD [ft]	Vert Sect [ft]	North [ft]	East [ft]	DLS [°/100ft]	Comments
0.00†	0.000	207.660	0.00	0.00	0.00	0.00	0.00	
20.00	0.000	207.660	20.00	0.00	0.00	0.00	0.00	
137.00	0.680	207.660	137.00	-0.32	-0.61	-0.32	0.58	
226.00	0.970	208.040	225.99	-0.92	-1.75	-0.92	0.33	
309.00	1.940	225.180	308.96	-2.25	-3.36	-2.25	1.27	
399.00	2.240	255.200	398.90	-5.03	-4.88	-5.03	1.24	
489.00	3.230	259.720	488.80	-9.22	-5.78	-9.22	1.12	
579.00	6.070	252.650	578.49	-16.26	-7.65	-16.26	3.21	
669.00	8.020	249.290	667.81	-26.68	-11.29	-26.68	2.21	
759.00	10.940	244.170	756.57	-40.24	-17.24	-40.24	3.37	
849.00	11.890	243.050	844.79	-56.19	-25.16	-56.19	1.08	
939.00	13.750	245.820	932.55	-74.22	-33.74	-74.22	2.18	
1029.00	13.890	249.110	1019.94	-94.07	-41.98	-94.07	0.89	
1119.00	14.960	250.750	1107.10	-115.13	-49.66	-115.13	1.27	
1209.00	15.210	253.100	1194.00	-137.39	-56.92	-137.39	0.73	
1299.00	14.060	250.780	1281.08	-159.01	-63.95	-159.01	1.43	
1389.00	14.280	248.990	1368.35	-179.70	-71.53	-179.70	0.54	
1479.00	14.250	245.860	1455.57	-200.17	-80.04	-200.17	0.86	
1569.00	14.330	244.040	1542.79	-220.29	-89.45	-220.29	0.51	
1659.00	14.280	241.130	1630.00	-240.02	-99.68	-240.02	0.80	
1749.00	14.640	243.080	1717.15	-259.88	-110.19	-259.88	0.67	
1776.00	14.570	243.450	1743.27	-265.97	-113.25	-265.97	0.43	
1854.00	14.260	247.870	1818.82	-283.64	-121.26	-283.64	1.47	
1947.00	14.780	250.130	1908.85	-305.41	-129.60	-305.41	0.83	
2040.00	14.720	250.530	1998.79	-327.70	-137.57	-327.70	0.13	
2134.00	14.850	251.190	2089.67	-350.37	-145.44	-350.37	0.23	
2226.00	14.710	252.170	2178.63	-372.65	-152.82	-372.65	0.31	
2319.00	14.730	253.590	2268.58	-395.23	-159.77	-395.23	0.39	
2412.00	14.700	254.600	2358.53	-417.95	-166.25	-417.95	0.28	
2504.00	14.590	253.010	2447.54	-440.28	-172.73	-440.28	0.45	



Actual Wellpath Report

BOST FARM 8C-8-L AWP

Page 3 of 10



REFERENCE WELLPATH IDENTIFICATION

Operator	SRC ENERGY	Slot	SLOT#46 BOST FARM 8C-8-L (1477'FNL & 939'FWL, SEC.07)
Area	COLORADO	Well	BOST FARM 8C-8-L
Field	WELD COUNTY (NAD83,TRUE NORTH)	Wellbore	BOST FARM 8C-8-L AWB
Facility	SEC.07-T05N-R66W		

WELLPATH DATA (196 stations)

MD [ft]	Inclination [°]	Azimuth [°]	TVD [ft]	Vert Sect [ft]	North [ft]	East [ft]	DLS [°/100ft]	Comments
2597.00	14.800	250.550	2537.50	-462.68	-180.11	-462.68	0.71	
2690.00	14.620	244.320	2627.46	-484.46	-189.15	-484.46	1.71	
2784.00	14.620	239.280	2718.42	-505.35	-200.35	-505.35	1.35	
2876.00	14.430	239.880	2807.48	-525.25	-212.04	-525.25	0.26	
2968.00	14.730	241.390	2896.51	-545.43	-223.39	-545.43	0.53	
3061.00	14.720	241.400	2986.46	-566.19	-234.71	-566.19	0.01	
3155.00	14.410	244.520	3077.44	-587.23	-245.46	-587.23	0.90	
3247.00	14.660	246.350	3166.49	-608.23	-255.05	-608.23	0.57	
3340.00	14.410	246.810	3256.52	-629.65	-264.33	-629.65	0.30	
3434.00	14.690	251.630	3347.51	-651.71	-272.69	-651.71	1.32	
3526.00	14.560	248.730	3436.53	-673.56	-280.56	-673.56	0.81	
3620.00	14.440	244.390	3527.54	-695.14	-289.91	-695.14	1.16	
3713.00	14.510	241.600	3617.58	-715.84	-300.47	-715.84	0.75	
3807.00	14.670	235.670	3708.56	-736.03	-312.78	-736.03	1.60	
3899.00	14.630	230.550	3797.57	-754.62	-326.74	-754.62	1.41	
3992.00	14.650	228.880	3887.55	-772.55	-341.93	-772.55	0.45	
4085.00	14.350	228.280	3977.59	-790.01	-357.34	-790.01	0.36	
4178.00	14.380	231.370	4067.68	-807.64	-372.22	-807.64	0.82	
4271.00	14.600	232.110	4157.73	-825.91	-386.62	-825.91	0.31	
4364.00	14.390	233.520	4247.77	-844.45	-400.69	-844.45	0.44	
4458.00	15.060	240.940	4338.69	-864.52	-413.57	-864.52	2.13	
4552.00	15.020	245.760	4429.47	-886.30	-424.50	-886.30	1.33	
4647.00	14.730	247.630	4521.29	-908.70	-434.15	-908.70	0.59	
4740.00	14.880	251.400	4611.20	-930.95	-442.46	-930.95	1.05	
4833.00	14.990	254.050	4701.06	-953.83	-449.58	-953.83	0.74	
4927.00	14.980	255.520	4791.86	-977.28	-455.95	-977.28	0.40	
5021.00	15.130	256.530	4882.64	-1000.97	-461.85	-1000.97	0.32	
5115.00	14.940	257.380	4973.42	-1024.73	-467.35	-1024.73	0.31	
5207.00	15.090	260.840	5062.28	-1048.12	-471.85	-1048.12	0.99	
5301.00	14.830	260.080	5153.10	-1072.05	-475.87	-1072.05	0.35	



Actual Wellpath Report

BOST FARM 8C-8-L AWP

Page 4 of 10

**BAKER
HUGHES**
a GE company



REFERENCE WELLPATH IDENTIFICATION

Operator	SRC ENERGY	Slot	SLOT#46 BOST FARM 8C-8-L (1477'FNL & 939'FWL, SEC.07)
Area	COLORADO	Well	BOST FARM 8C-8-L
Field	WELD COUNTY (NAD83,TRUE NORTH)	Wellbore	BOST FARM 8C-8-L AWB
Facility	SEC.07-T05N-R66W		

WELLPATH DATA (196 stations) † = interpolated/extrapolated station

MD [ft]	Inclination [°]	Azimuth [°]	TVD [ft]	Vert Sect [ft]	North [ft]	East [ft]	DLS [°/100ft]	Comments
5394.00	14.840	255.010	5243.00	-1095.28	-481.00	-1095.28	1.40	
5490.00	15.030	251.600	5335.76	-1118.97	-488.11	-1118.97	0.94	
5584.00	14.480	253.590	5426.66	-1141.81	-495.28	-1141.81	0.80	
5676.00	15.110	251.040	5515.61	-1164.18	-502.43	-1164.18	0.98	
5769.00	14.610	252.140	5605.50	-1186.81	-509.96	-1186.81	0.62	
5862.00	14.990	257.720	5695.42	-1209.73	-516.12	-1209.73	1.59	
5955.00	15.020	259.270	5785.25	-1233.32	-520.92	-1233.32	0.43	
6047.00	14.970	256.510	5874.11	-1256.59	-525.91	-1256.59	0.78	
6140.00	15.030	254.190	5963.95	-1279.87	-532.00	-1279.87	0.65	
6233.00	15.020	253.610	6053.77	-1303.03	-538.68	-1303.03	0.16	
6326.00	15.010	251.880	6143.59	-1326.04	-545.83	-1326.04	0.48	
6420.00	14.780	251.020	6234.43	-1348.95	-553.51	-1348.95	0.34	
6512.00	14.680	251.410	6323.41	-1371.09	-561.05	-1371.09	0.15	
6605.00	13.280	246.470	6413.66	-1392.06	-569.07	-1392.06	1.98	
6697.00	7.520	172.150	6504.44	-1400.96	-579.30	-1400.96	14.50	
6790.00	6.290	112.200	6596.88	-1395.41	-587.26	-1395.41	7.49	
6883.00	12.450	123.070	6688.60	-1382.28	-594.66	-1382.28	6.86	
6975.00	21.150	120.390	6776.59	-1359.61	-608.50	-1359.61	9.49	
7069.00	30.140	113.850	6861.26	-1323.31	-626.66	-1323.31	10.01	
7162.00	38.090	110.110	6938.20	-1274.94	-646.00	-1274.94	8.84	
7254.00	45.410	100.740	7006.86	-1215.97	-661.90	-1215.97	10.44	
7347.00	53.100	89.310	7067.63	-1146.01	-667.64	-1146.01	12.43	
7439.00	61.210	85.480	7117.50	-1068.89	-664.01	-1068.89	9.48	
7533.00	70.780	87.920	7155.70	-983.27	-659.14	-983.27	10.45	
7626.00	78.540	88.370	7180.28	-893.70	-656.25	-893.70	8.36	
7721.00	86.740	87.730	7192.44	-799.62	-653.04	-799.62	8.66	
7737.00†	86.898	87.360	7193.33	-783.66	-652.36	-783.66	2.51	LANDING (2144'FNL & 152'FWL, SEC.07)
7814.00	87.660	85.580	7196.99	-706.89	-647.62	-706.89	2.51	
7907.00	87.750	85.100	7200.71	-614.27	-640.07	-614.27	0.52	
8001.00	87.630	85.390	7204.50	-520.67	-632.28	-520.67	0.33	



Actual Wellpath Report

BOST FARM 8C-8-L AWP

Page 5 of 10



REFERENCE WELLPATH IDENTIFICATION

Operator	SRC ENERGY	Slot	SLOT#46 BOST FARM 8C-8-L (1477'FNL & 939'FWL, SEC.07)
Area	COLORADO	Well	BOST FARM 8C-8-L
Field	WELD COUNTY (NAD83,TRUE NORTH)	Wellbore	BOST FARM 8C-8-L AWB
Facility	SEC.07-T05N-R66W		

WELLPATH DATA (196 stations)

MD [ft]	Inclination [°]	Azimuth [°]	TVD [ft]	Vert Sect [ft]	North [ft]	East [ft]	DLS [°/100ft]	Comments
8093.00	88.680	86.940	7207.46	-428.93	-626.13	-428.93	2.03	
8186.00	88.430	89.210	7209.81	-336.02	-623.01	-336.02	2.45	
8279.00	88.280	88.240	7212.48	-243.08	-620.94	-243.08	1.05	
8372.00	88.580	88.350	7215.02	-150.16	-618.18	-150.16	0.34	
8464.00	88.770	89.130	7217.15	-58.21	-616.15	-58.21	0.87	
8556.00	87.480	91.360	7220.16	33.74	-616.55	33.74	2.80	
8648.00	85.930	92.470	7225.45	125.53	-619.62	125.53	2.07	
8742.00	86.090	94.190	7231.99	219.14	-625.06	219.14	1.83	
8836.00	84.860	93.780	7239.41	312.62	-631.57	312.62	1.38	
8928.00	84.890	92.920	7247.63	404.09	-636.93	404.09	0.93	
9022.00	86.000	91.450	7255.09	497.72	-640.50	497.72	1.96	
9116.00	85.870	89.430	7261.76	591.48	-641.22	591.48	2.15	
9210.00	84.450	87.930	7269.69	685.11	-639.06	685.11	2.19	
9302.00	84.210	87.540	7278.78	776.59	-635.45	776.59	0.50	
9395.00	84.450	88.320	7287.96	869.07	-632.10	869.07	0.87	
9487.00	84.360	88.940	7296.93	960.61	-629.91	960.61	0.68	
9581.00	84.450	90.010	7306.10	1054.16	-629.06	1054.16	1.14	
9673.00	84.390	91.340	7315.05	1145.71	-630.14	1145.71	1.44	
9766.00	84.390	91.830	7324.14	1238.23	-632.70	1238.23	0.52	
9859.00	84.360	90.440	7333.25	1330.76	-634.53	1330.76	1.49	
9952.00	84.390	89.400	7342.37	1423.31	-634.40	1423.31	1.11	
10045.00	84.270	89.220	7351.56	1515.85	-633.29	1515.85	0.23	
10139.00	84.270	90.350	7360.94	1609.38	-632.94	1609.38	1.20	
10232.00	85.250	90.600	7369.44	1701.99	-633.70	1701.99	1.09	
10326.00	87.070	93.200	7375.73	1795.71	-636.81	1795.71	3.37	
10420.00	86.980	93.410	7380.61	1889.43	-642.23	1889.43	0.24	
10512.00	86.890	92.440	7385.53	1981.18	-646.91	1981.18	1.06	
10606.00	86.920	91.020	7390.61	2074.99	-649.75	2074.99	1.51	
10701.00	86.950	90.160	7395.68	2169.85	-650.72	2169.85	0.90	
10794.00	89.780	93.800	7398.34	2262.73	-653.94	2262.73	4.96	



Actual Wellpath Report

BOST FARM 8C-8-L AWP

Page 6 of 10



REFERENCE WELLPATH IDENTIFICATION

Operator	SRC ENERGY	Slot	SLOT#46 BOST FARM 8C-8-L (1477'FNL & 939'FWL, SEC.07)
Area	COLORADO	Well	BOST FARM 8C-8-L
Field	WELD COUNTY (NAD83,TRUE NORTH)	Wellbore	BOST FARM 8C-8-L AWB
Facility	SEC.07-T05N-R66W		

WELLPATH DATA (196 stations)

MD [ft]	Inclination [°]	Azimuth [°]	TVD [ft]	Vert Sect [ft]	North [ft]	East [ft]	DLS [°/100ft]	Comments
10887.00	89.940	94.940	7398.57	2355.46	-661.02	2355.46	1.24	
10981.00	91.260	90.980	7397.58	2449.31	-665.88	2449.31	4.44	
11075.00	91.230	89.610	7395.54	2543.28	-666.36	2543.28	1.46	
11168.00	91.200	88.160	7393.57	2636.24	-664.55	2636.24	1.56	
11262.00	90.490	86.380	7392.18	2730.12	-660.08	2730.12	2.04	
11356.00	90.400	84.810	7391.45	2823.84	-652.86	2823.84	1.67	
11449.00	90.120	85.710	7391.03	2916.52	-645.17	2916.52	1.01	
11543.00	90.120	85.560	7390.83	3010.25	-638.02	3010.25	0.16	
11635.00	90.920	86.460	7390.00	3102.02	-631.62	3102.02	1.31	
11729.00	90.830	87.180	7388.56	3195.86	-626.40	3195.86	0.77	
11821.00	91.450	87.990	7386.73	3287.76	-622.53	3287.76	1.11	
11915.00	91.200	89.500	7384.56	3381.71	-620.47	3381.71	1.63	
12007.00	90.800	92.750	7382.95	3473.67	-622.27	3473.67	3.56	
12100.00	90.950	95.890	7381.53	3566.38	-629.28	3566.38	3.38	
12192.00	90.520	95.150	7380.35	3657.94	-638.13	3657.94	0.93	
12286.00	90.220	93.800	7379.74	3751.65	-645.46	3751.65	1.47	
12378.00	90.490	93.720	7379.17	3843.45	-651.49	3843.45	0.31	
12471.00	90.340	94.000	7378.50	3936.24	-657.75	3936.24	0.34	
12564.00	90.430	91.570	7377.87	4029.12	-662.27	4029.12	2.61	
12659.00	90.680	90.990	7376.95	4124.09	-664.39	4124.09	0.66	
12752.00	90.430	90.610	7376.05	4217.08	-665.69	4217.08	0.49	
12845.00	90.770	90.140	7375.08	4310.07	-666.30	4310.07	0.62	
12938.00	90.620	89.470	7373.95	4403.06	-665.98	4403.06	0.74	
13032.00	90.490	89.030	7373.04	4497.05	-664.75	4497.05	0.49	
13126.00	90.310	87.870	7372.38	4591.01	-662.21	4591.01	1.25	
13220.00	90.280	87.860	7371.90	4684.95	-658.71	4684.95	0.03	
13312.00	89.880	87.110	7371.77	4776.86	-654.67	4776.86	0.92	
13405.00	89.780	86.250	7372.05	4869.70	-649.29	4869.70	0.93	
13499.00	89.450	87.070	7372.68	4963.54	-643.81	4963.54	0.94	
13592.00	89.630	87.740	7373.43	5056.44	-639.60	5056.44	0.75	



Actual Wellpath Report

BOST FARM 8C-8-L AWP

Page 7 of 10

**BAKER
HUGHES**
a GE company



REFERENCE WELLPATH IDENTIFICATION

Operator	SRC ENERGY	Slot	SLOT#46 BOST FARM 8C-8-L (1477'FNL & 939'FWL, SEC.07)
Area	COLORADO	Well	BOST FARM 8C-8-L
Field	WELD COUNTY (NAD83,TRUE NORTH)	Wellbore	BOST FARM 8C-8-L AWB
Facility	SEC.07-T05N-R66W		

WELLPATH DATA (196 stations)

MD [ft]	Inclination [°]	Azimuth [°]	TVD [ft]	Vert Sect [ft]	North [ft]	East [ft]	DLS [°/100ft]	Comments
13687.00	89.260	87.860	7374.35	5151.36	-635.95	5151.36	0.41	
13780.00	88.740	90.020	7375.97	5244.33	-634.23	5244.33	2.39	
13873.00	89.450	92.590	7377.44	5337.28	-636.35	5337.28	2.87	
13966.00	89.230	92.140	7378.51	5430.20	-640.19	5430.20	0.54	
14060.00	89.660	92.560	7379.42	5524.11	-644.04	5524.11	0.64	
14154.00	89.480	92.520	7380.13	5618.02	-648.21	5618.02	0.20	
14248.00	89.290	92.550	7381.14	5711.92	-652.37	5711.92	0.20	
14342.00	89.720	92.660	7381.95	5805.82	-656.64	5805.82	0.47	
14435.00	89.850	92.210	7382.30	5898.73	-660.59	5898.73	0.50	
14528.00	89.820	92.280	7382.56	5991.66	-664.23	5991.66	0.08	
14620.00	90.430	90.770	7382.36	6083.63	-666.68	6083.63	1.77	
14713.00	89.690	89.620	7382.27	6176.62	-667.00	6176.62	1.47	
14806.00	89.380	90.600	7383.02	6269.62	-667.18	6269.62	1.11	
14900.00	89.850	91.580	7383.65	6363.60	-668.96	6363.60	1.16	
14994.00	89.020	92.330	7384.58	6457.54	-672.17	6457.54	1.19	
15087.00	89.290	91.920	7385.95	6550.46	-675.62	6550.46	0.53	
15180.00	89.020	91.770	7387.32	6643.41	-678.61	6643.41	0.33	
15273.00	89.200	91.900	7388.77	6736.35	-681.59	6736.35	0.24	
15366.00	89.850	91.670	7389.54	6829.30	-684.49	6829.30	0.74	
15459.00	89.540	90.630	7390.03	6922.28	-686.35	6922.28	1.17	
15551.00	89.480	89.810	7390.82	7014.27	-686.71	7014.27	0.89	
15644.00	89.170	88.780	7391.92	7107.26	-685.56	7107.26	1.16	
15736.00	88.980	87.700	7393.40	7199.20	-682.74	7199.20	1.19	
15829.00	89.170	87.180	7394.90	7292.09	-678.58	7292.09	0.60	
15922.00	90.550	91.610	7395.13	7385.06	-677.60	7385.06	4.99	
16015.00	90.150	91.420	7394.56	7478.03	-680.06	7478.03	0.48	
16108.00	90.090	91.720	7394.37	7570.99	-682.61	7570.99	0.33	
16203.00	90.830	90.170	7393.60	7665.97	-684.17	7665.97	1.81	
16295.00	90.620	89.340	7392.44	7757.97	-683.78	7757.97	0.93	
16390.00	90.800	89.680	7391.26	7852.95	-682.97	7852.95	0.40	



Actual Wellpath Report

BOST FARM 8C-8-L AWP

Page 8 of 10



REFERENCE WELLPATH IDENTIFICATION

Operator	SRC ENERGY	Slot	SLOT#46 BOST FARM 8C-8-L (1477'FNL & 939'FWL, SEC.07)
Area	COLORADO	Well	BOST FARM 8C-8-L
Field	WELD COUNTY (NAD83,TRUE NORTH)	Wellbore	BOST FARM 8C-8-L AWB
Facility	SEC.07-T05N-R66W		

WELLPATH DATA (196 stations)

MD [ft]	Inclination [°]	Azimuth [°]	TVD [ft]	Vert Sect [ft]	North [ft]	East [ft]	DLS [°/100ft]	Comments
16482.00	90.490	88.720	7390.23	7944.94	-681.68	7944.94	1.10	
16575.00	90.800	86.970	7389.18	8037.86	-678.19	8037.86	1.91	
16669.00	90.520	86.890	7388.10	8131.72	-673.15	8131.72	0.31	
16761.00	90.340	86.380	7387.41	8223.56	-667.75	8223.56	0.59	
16854.00	90.180	86.490	7386.98	8316.38	-661.97	8316.38	0.21	
16947.00	90.740	86.720	7386.24	8409.21	-656.46	8409.21	0.65	
17040.00	90.650	88.450	7385.11	8502.12	-652.55	8502.12	1.86	
17135.00	90.620	89.710	7384.06	8597.10	-651.02	8597.10	1.33	
17229.00	90.490	90.000	7383.15	8691.09	-650.78	8691.09	0.34	
17322.00	90.310	88.200	7382.50	8784.08	-649.32	8784.08	1.95	
17415.00	90.580	89.710	7381.77	8877.06	-647.63	8877.06	1.65	
17507.00	90.860	89.530	7380.62	8969.05	-647.02	8969.05	0.36	
17599.00	90.740	92.380	7379.33	9061.02	-648.55	9061.02	3.10	
17692.00	90.490	94.540	7378.34	9153.83	-654.16	9153.83	2.34	
17756.00	89.570	93.440	7378.30	9217.68	-658.61	9217.68	2.24	BH LAST SURVEY (2094'FNL & 419'FEL, SEC.08)
17780.00	89.570	93.440	7378.48	9241.63	-660.05	9241.63	0.00	PROJ TO BIT (2095'FNL & 395'FEL, SEC.08)

HOLE & CASING SECTIONS - Ref Wellbore: BOST FARM 8C-8-L AWB Ref Wellpath: BOST FARM 8C-8-L AWP

String/Diameter	Start MD [ft]	End MD [ft]	Interval [ft]	Start TVD [ft]	End TVD [ft]	Start N/S [ft]	Start E/W [ft]	End N/S [ft]	End E/W [ft]
13.5in Open Hole	20.00	1836.00	1816.00	20.00	1801.38	0.00	0.00	-119.55	-279.54
9.625in Casing Surface	20.00	1836.00	1816.00	20.00	1801.38	0.00	0.00	-119.55	-279.54
8.5in Open Hole	1836.00	17780.00	15944.00	1801.38	7378.48	-119.55	-279.54	-660.05	9241.63



Actual Wellpath Report

BOST FARM 8C-8-L AWP

Page 9 of 10



REFERENCE WELLPATH IDENTIFICATION

Operator	SRC ENERGY	Slot	SLOT#46 BOST FARM 8C-8-L (1477'FNL & 939'FWL, SEC.07)
Area	COLORADO	Well	BOST FARM 8C-8-L
Field	WELD COUNTY (NAD83,TRUE NORTH)	Wellbore	BOST FARM 8C-8-L AWB
Facility	SEC.07-T05N-R66W		

TARGETS

Name	TVD [ft]	North [ft]	East [ft]	Grid East [US ft]	Grid North [US ft]	Latitude	Longitude	Shape
SEC.07-T05N-R66W	25.00	-1328.63	324.95	3187161.59	1394309.79	40°24'49.806"N	104°49'40.249"W	polygon
SEC.08-T05N-R66W	25.00	-1328.63	324.95	3187161.59	1394309.79	40°24'49.806"N	104°49'40.249"W	polygon
BOST FARM 8C-8-L TOP OF PROD REV-1 (2137'FNL & 150'FWL, SEC.07)	7194.39	-645.89	-785.84	3186045.71	1394984.07	40°24'56.552"N	104°49'54.610"W	point
BOST FARM 8C-8-L TOP OF PROD ON PLAT (2137'FNL & 150'FWL, SEC.07)	7195.00	-645.89	-785.84	3186045.71	1394984.07	40°24'56.552"N	104°49'54.610"W	point
BOST FARM 1N-8C-L HARDLINE BOX	7286.00	139.96	1.08	3186826.63	1395775.82	40°25'04.318"N	104°49'44.436"W	polygon
BOST FARM 8C-8-L BHL REV-1 (2100'FNL & 460'FEL, SEC.08)	7374.89	-664.24	9176.53	3196007.53	1395041.11	40°24'56.354"N	104°47'45.812"W	point
BOST FARM 8C-8-L BHL ON PLAT (2100'FNL & 460'FEL, SEC.08)	7379.00	-664.24	9176.53	3196007.53	1395041.11	40°24'56.354"N	104°47'45.812"W	point

WELLPATH COMPOSITION - Ref Wellbore: BOST FARM 8C-8-L AWB Ref Wellpath: BOST FARM 8C-8-L AWP

Start MD [ft]	End MD [ft]	Positional Uncertainty Model	Log Name/Comment	Wellbore
20.00	1776.00	BHI NaviTrak (Standard)	13 1/2" SURFACE SECTION <121-1760>	BOST FARM 8C-8-L AWB
1776.00	17756.00	BHI AutoTrak Curve (MagCAD+IFR1, Short spacing)	8 1/2" MONOBORE SURVEYS <1854-17756>	BOST FARM 8C-8-L AWB
17756.00	17780.00	Blind Drilling (std)	Projection to bit	BOST FARM 8C-8-L AWB



Actual Wellpath Report

BOST FARM 8C-8-L AWP

Page 10 of 10



REFERENCE WELLPATH IDENTIFICATION

Operator	SRC ENERGY	Slot	SLOT#46 BOST FARM 8C-8-L (1477'FNL & 939'FWL, SEC.07)
Area	COLORADO	Well	BOST FARM 8C-8-L
Field	WELD COUNTY (NAD83,TRUE NORTH)	Wellbore	BOST FARM 8C-8-L AWB
Facility	SEC.07-T05N-R66W		

WELLPATH COMMENTS

MD [ft]	Inclination [°]	Azimuth [°]	TVD [ft]	Comment
7737.00	86.898	87.360	7193.33	LANDING (2144'FNL & 152'FWL, SEC.07)
17756.00	89.570	93.440	7378.30	BH LAST SURVEY (2094'FNL & 419'FEL, SEC.08)
17780.00	89.570	93.440	7378.48	PROJ TO BIT (2095'FNL & 395'FEL, SEC.08)