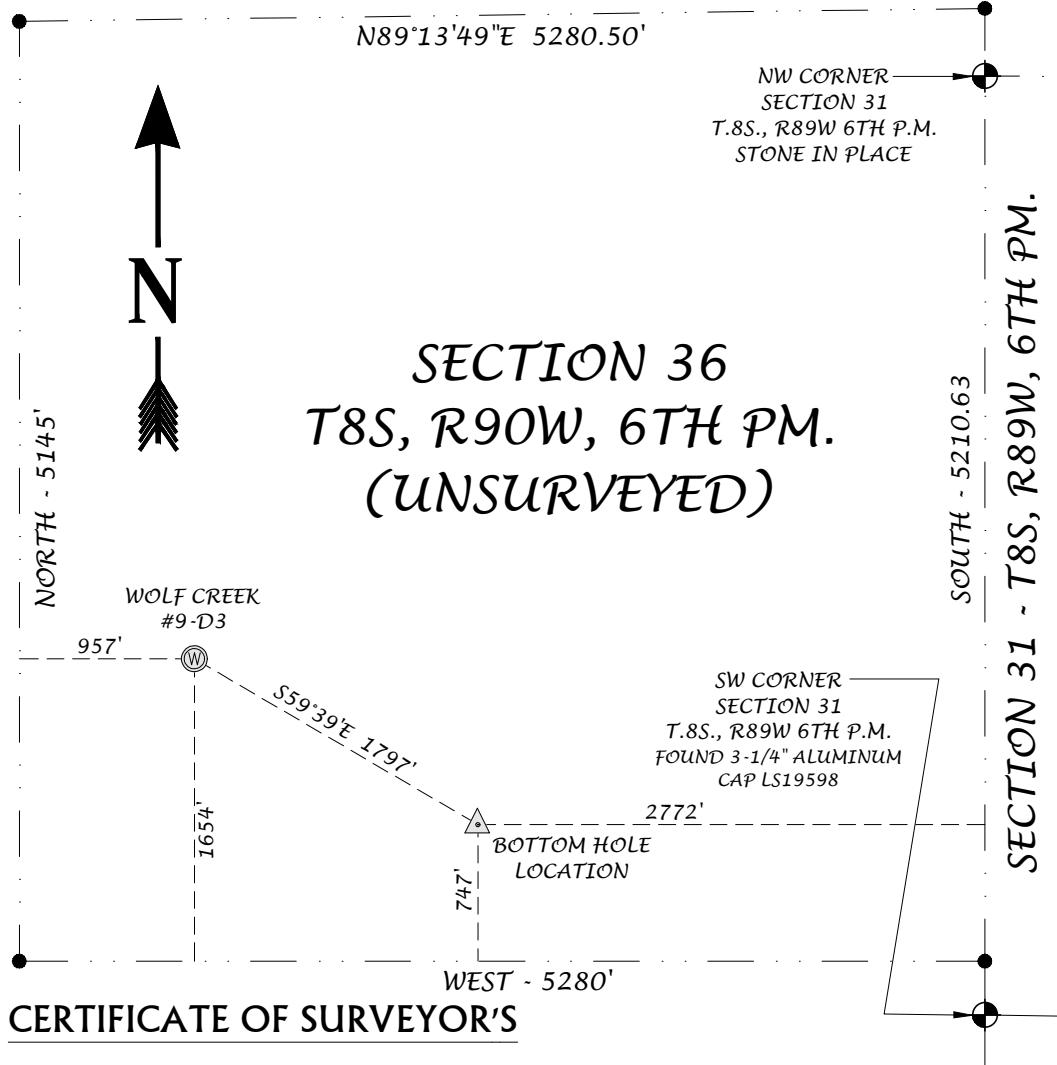


# WELL LOCATION PLAT

TOWNSHIP 8 SOUTH, RANGE 90 WEST OF THE 6TH P.M.



**WELL NAME**  
WOLF CREEK #9-D3

**GENERAL LOCATION**  
NW1/4SW1/4, SECTION 36  
T. 8 S., R. 90 W., 6TH P.M.  
PITKIN COUNTY

**SURFACE LOCATION**  
1654' NORTH OF SOUTH LINE  
957' EAST OF WEST LINE

**SURFACE WELL LOCATION**  
NAD83

LAT: 39°18'46.34"(N)  
LONG: 107°23'44.66"(W)  
LAT: 39.312871  
LONG: 107.395739

PDOP = 1.7  
GROUND ELEVATION  
10163.9-NAVD88 DATUM  
**BOTTOM HOLE LOCATION**  
747' NORTH OF SOUTH LINE  
2772' WEST OF EAST LINE

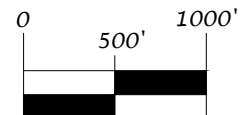
**BOTTOM HOLE LOCATION**  
NAD83

LAT: 39°18'37.69"(N)  
LONG: 107°23'24.69"(W)  
LAT: 39.310469  
LONG: 107.390193

## CERTIFICATE OF SURVEYOR'S

I, RODNEY P. KISER, DO HEREBY CERTIFY THAT THIS WELL LOCATION PLAT WAS PREPARED FROM AVAILABLE RECORDS, MAPS, FIELD STAKING AND LOCATION INFORMATION TAKEN DURING A FIELD SURVEY MADE UNDER MY DIRECTION AND IT CORRECTLY SHOWS THE LOCATION OF THE SURFACE WELL LOCATION.

- LATITUDES AND LONGITUDES ARE BASED ON NAD83, NGS CONTROL POINTS ROSEBUD, Q158 AND N158.
- WELL MEASUREMENTS ARE 90° FROM SECTION LINES.
- CURRENT SURFACE LAND USE: EXISTING WELL PAD WOLF CREEK #9, SURROUNDED BY U.S. PUBLIC LANDS.



SCALE: 1" = 1000'

**TRUE NORTH**  
COLORADO

A LAND SURVEYING AND MAPPING COMPANY

**BLACK HILLS ENERGY**  
SECTION 36, TOWNSHIP 8 SOUTH, RANGE 90 WEST OF 6TH P.M.  
COUNTY OF PITKIN, STATE OF COLORADO



**TRUE NORTH COLORADO, LLC.**

A LAND SURVEYING AND MAPPING COMPANY  
PO BOX 614 - 529 S WILD HORSE DRIVE  
NEW CASTLE, COLORADO 81647  
(970) 984-0474  
www.truenorthcolorado.com

PROJECT NO: 2017-216

DATE: February 7, 2019

DRAWN

RPK

SURVEYED

LDV

SHEET  
3 OF 6