

WELL LOCATION CERTIFICATE
SALT RANCH FEE 506-1035H

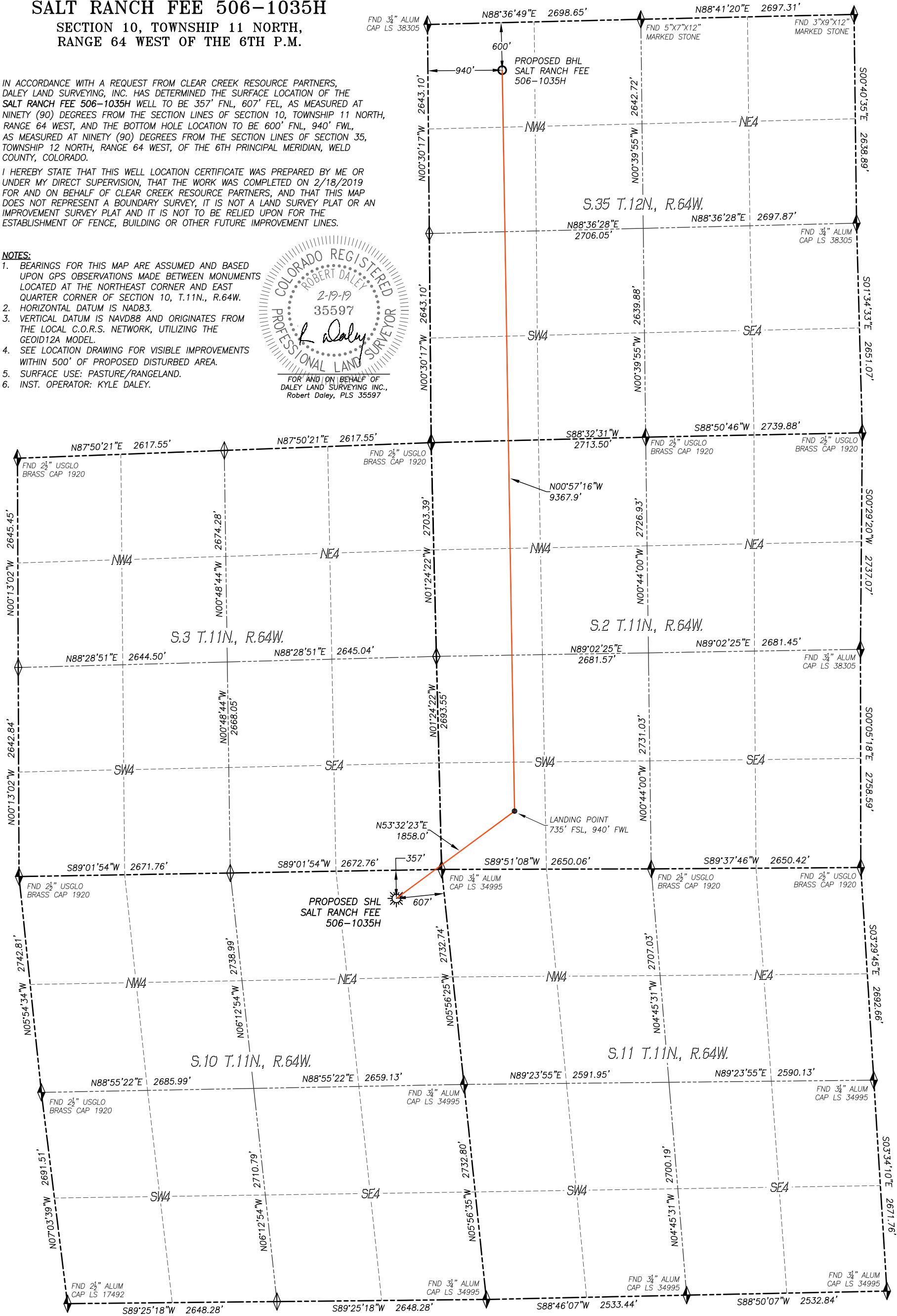
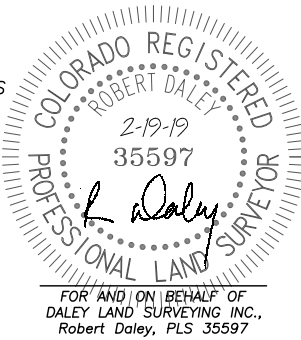
SECTION 10, TOWNSHIP 11 NORTH,
RANGE 64 WEST OF THE 6TH P.M.

IN ACCORDANCE WITH A REQUEST FROM CLEAR CREEK RESOURCE PARTNERS, DALEY LAND SURVEYING, INC. HAS DETERMINED THE SURFACE LOCATION OF THE SALT RANCH FEE 506-1035H WELL TO BE 357' FNL, 607' FEL, AS MEASURED AT NINETY (90) DEGREES FROM THE SECTION LINES OF SECTION 10, TOWNSHIP 11 NORTH, RANGE 64 WEST, AND THE BOTTOM HOLE LOCATION TO BE 600' FNL, 940' FWL, AS MEASURED AT NINETY (90) DEGREES FROM THE SECTION LINES OF SECTION 35, TOWNSHIP 12 NORTH, RANGE 64 WEST, OF THE 6TH PRINCIPAL MERIDIAN, WELD COUNTY, COLORADO.

I HEREBY STATE THAT THIS WELL LOCATION CERTIFICATE WAS PREPARED BY ME OR UNDER MY DIRECT SUPERVISION, THAT THE WORK WAS COMPLETED ON 2/18/2019 FOR AND ON BEHALF OF CLEAR CREEK RESOURCE PARTNERS, AND THAT THIS MAP DOES NOT REPRESENT A BOUNDARY SURVEY, IT IS NOT A LAND SURVEY PLAT OR AN IMPROVEMENT SURVEY PLAT AND IT IS NOT TO BE RELIED UPON FOR THE ESTABLISHMENT OF FENCE, BUILDING OR OTHER FUTURE IMPROVEMENT LINES.

NOTES:

- BEARINGS FOR THIS MAP ARE ASSUMED AND BASED UPON GPS OBSERVATIONS MADE BETWEEN MONUMENTS LOCATED AT THE NORTHEAST CORNER AND EAST QUARTER CORNER OF SECTION 10, T.11N., R.64W.
- HORIZONTAL DATUM IS NAD83.
- VERTICAL DATUM IS NAVD88 AND ORIGINATES FROM THE LOCAL C.O.R.S. NETWORK, UTILIZING THE GEOID12A MODEL.
- SEE LOCATION DRAWING FOR VISIBLE IMPROVEMENTS WITHIN 500' OF PROPOSED DISTURBED AREA.
- SURFACE USE: PASTURE/RANGELAND.
- INST. OPERATOR: KYLE DALEY.



NEAREST CULTURAL ITEMS:

BUILDING: 5280'+
BUILDING UNIT: 5280'+
HIGH OCC. BLD. UNIT: 5280'+
DES. OUTSIDE ACTIVITY AREA: 5280'+
PUBLIC ROAD: 594'± E
ABOVE GROUND UTILITY: 5280'+
RAILROAD: 5280'+
PROPERTY LINE: 357'± N

NAD 83 LATITUDE AND LONGITUDE

SURFACE LOCATION:

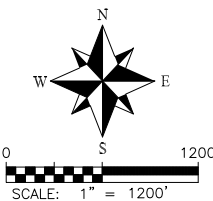
LATITUDE: N40.94219°
LONGITUDE: W104.52580°
ELEV.: 5434'
PDOP: 1.2
QTR/QTR: NE4/NE4

LANDING POINT:

LATITUDE: N40.94518°
LONGITUDE: W104.52034°
BOTTOM HOLE:
LATITUDE: N40.97088°
LONGITUDE: W104.52053°

LEGEND

- FOUND MONUMENT AS DESCRIBED
- CALCULATED POSITION
- PROPOSED WELL
- EXISTING WELL
- BOTTOM HOLE



DALEY LAND
SURVEYING, INC.
PARKER, COLORADO
303.953.9841