

CCRP OPERATING INC.

Location: COLORADO Slot: SLOT#01 SALT RANCH FEE 506-1035H (357°FNL & 607°FEL, SEC.10)
Field: WELD COUNTY (NAD 83/TN) Well: SALT RANCH FEE 506-1035H
Facility: SEC.10-T11N-R64W Wellbore: SALT RANCH FEE 506-1035H PWB

Plot reference wellpath is SALT RANCH FEE 506-1035H (REV-A.0) PWP

True vertical depths are referenced to RIG (23KB) (RKB)

Measured depths are referenced to RIG (23KB) (RKB)

RIG (23KB) (RKB) to Mean Sea Level: 5456 feet

Mean Sea Level to Mud line (At Slot: SLOT#01 SALT RANCH FEE 506-1035H (357°FNL & 607°FEL, SEC.10)): 0 feet

Coordinates are in feet referenced to Slot

Grid System: NAD83 / Lambert Colorado SP, Northern Zone (501), US feet

* - Wellpath was transformed from a different geodetic datum

North Reference: True north

Scale: True distance

Depths are in feet

Created by: adamkat on 2019-02-12

Database: Denver

Location Information

Facility Name			Grid East (US ft)	Grid North (US ft)	Latitude	Longitude
SEC.10-T11N-R64W			3269150.078	1587572.090	40°56'31.888"N	104°31'32.869"W
Slot	Local N (ft)	Local E (ft)	Grid East (US ft)	Grid North (US ft)	Latitude	Longitude
SLOT#01 SALT RANCH FEE 506-1035H (357°FNL & 607°FEL, SEC.10)	0.00	0.00	3269150.078	1587572.090	40°56'31.888"N	104°31'32.869"W
RIG (23KB) (RKB) to Mud line (At Slot: SLOT#01 SALT RANCH FEE 506-1035H (357°FNL & 607°FEL, SEC.10))			5456ft			
Mean Sea Level to Mud line (At Slot: SLOT#01 SALT RANCH FEE 506-1035H (357°FNL & 607°FEL, SEC.10))			0ft			
RIG (23KB) (RKB) to Mean Sea Level			5456ft			

Well Profile Data

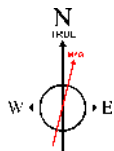
Design Comment	MD (ft)	Inc (°)	Az (°)	TVD (ft)	Local N (ft)	Local E (ft)	DLS (°/100ft)	VS (ft)
Tie On	23.00	0.000	76.144	23.00	0.00	0.00	0.00	0.00
End of Tangent	2000.00	0.000	76.144	2000.00	0.00	0.00	0.00	0.00
End of Build	3499.76	22.496	76.144	3461.52	69.61	282.21	1.50	107.84
End of Tangent	6239.38	22.496	76.144	5992.66	320.65	1299.95	0.00	496.75
End of Drop	7364.20	0.000	359.675	7088.80	372.85	1511.61	2.00	577.63
End of Tangent	7464.20	0.000	359.675	7188.80	372.85	1511.61	0.00	577.63
End of Build	8589.20	90.000	359.675	7905.00	1089.04	1507.55	8.00	1286.42
End of Tangent	17953.10	90.000	359.675	7905.00	10452.80	1454.50	0.00	10553.51

Survey Program

Start MD (ft)	End MD (ft)	Tool	Model	Log Name/Comment	Wellbore
23.00	18053.31	BHI Nav iTrak	BHI Nav iTrak (Rotating+Axial Corr)		SALT RANCH FEE 506-1035H PWB

Bottom Hole Location

MD (ft)	Inc (°)	Az (°)	TVD (ft)	Local N (ft)	Local E (ft)	Grid East (US ft)	Grid North (US ft)	Latitude	Longitude
17953.10	90.000	359.675	7905.00	10452.80	1454.50	3270489.70	1598040.52	40°58'15.168"N	104°31'13.908"W

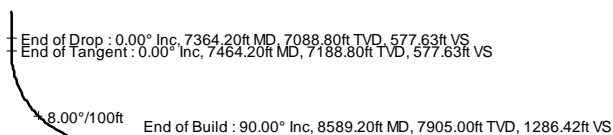


BGGM (1900.0 to 2020.0) Dip: 67.26° Field: 52517.2 nT
Magnetic North is 8.12 degrees East of True North (at 2/8/2019)

To correct azimuth from Magnetic to True add 8.12 degrees



True Vertical Depth (ft)
Scale 1 inch = 1500

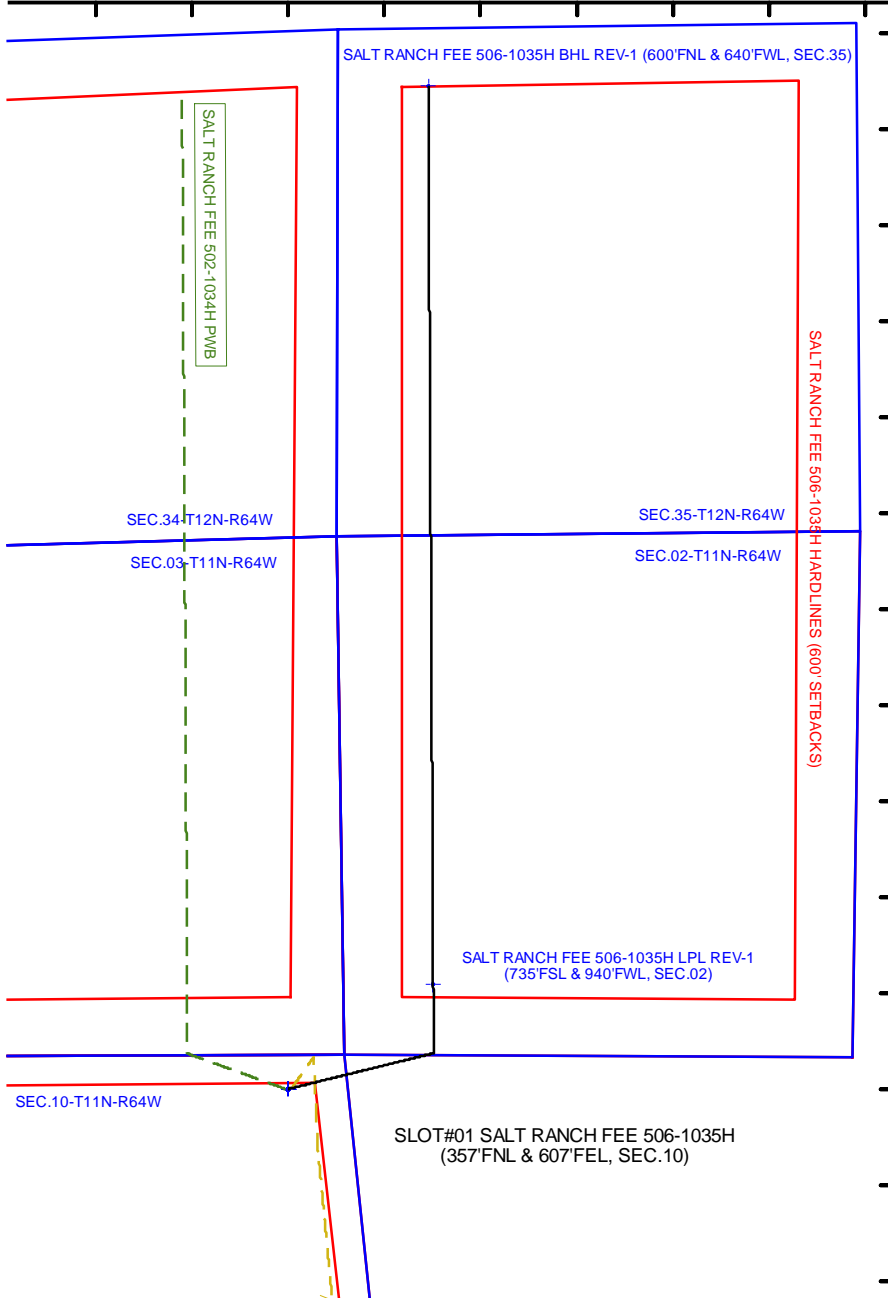


SALT RANCH FEE 506-1035H LPL REV-1 (735°FSL & 940°FWL, SEC.02)

Scale 1 inch = 2000

Easting (ft)

-2000 -1000 0 1000 2000 3000 4000 5000 6000



Northing (ft)

11000
10000
9000
8000
7000
6000
5000
4000
3000
2000
1000
0
-1000
-2000

SALT RANCH FEE 506-1035H BHL REV-1 (600°FNL & 640°FWL, SEC.35)

End of Tangent : 90.00° Inc, 17953.10ft MD, 7905.00ft TVD, 10553.51ft VS

Vertical Section (ft)

Azimuth 7.92° with reference 0.00 N, 0.00 E

Scale 1 inch = 1500

Planned Wellpath Report

SALT RANCH FEE 506-1035H (REV-A.0) PWP

Page 1 of 7

REFERENCE WELLPATH IDENTIFICATION			
Operator	CCRP OPERATING INC.	Slot	SLOT#01 SALT RANCH FEE 506-1035H (357'FNL & 607'FEL, SEC.10)
Area	COLORADO	Well	SALT RANCH FEE 506-1035H
Field	WELD COUNTY (NAD 83/TN)	Wellbore	SALT RANCH FEE 506-1035H PWB
Facility	SEC.10-T11N-R64W		

REPORT SETUP INFORMATION			
Projection System	NAD83 / Lambert Colorado SP, Northern Zone (501), US feet	Software System	WellArchitect® 5.0
North Reference	True	User	Adamkat
Scale	1.000030	Report Generated	2/12/2019 at 7:19:58 AM
Convergence at slot	0.63° East	Database/Source file	Denver/SALT_RANCH_FEE_506-1035H_REV-A.0_PWP.xml

WELLPATH LOCATION						
	Local coordinates		Grid coordinates		Geographic coordinates	
	North[ft]	East[ft]	Easting[US ft]	Northing[US ft]	Latitude	Longitude
Slot Location	0.00	0.00	3269150.08	1587572.09	40°56'31.888"N	104°31'32.869"W
Facility Reference Pt			3269150.08	1587572.09	40°56'31.888"N	104°31'32.869"W
Field Reference Pt			3242001.26	1607883.12	40°59'55.356"N	104°37'23.988"W

WELLPATH DATUM			
Calculation method	Minimum curvature	RIG (23'KB) (RKB) to Facility Vertical Datum	5456.00ft
Horizontal Reference Pt	Slot	RIG (23'KB) (RKB) to Mean Sea Level	5456.00ft
Vertical Reference Pt	RIG (23'KB) (RKB)	RIG (23'KB) (RKB) to Mud Line at Slot (SLOT#01 SALT RANCH FEE 506-1035H (357'FNL & 607'FEL, SEC.10))	5456.00ft
MD Reference Pt	RIG (23'KB) (RKB)	Section Origin	N 0.00, E 0.00 ft
Field Vertical Reference	Mean Sea Level	Section Azimuth	7.92°

Planned Wellpath Report

SALT RANCH FEE 506-1035H (REV-A.0) PWP
Page 2 of 7

REFERENCE WELLPATH IDENTIFICATION

Operator	CCRP OPERATING INC.	Slot	SLOT#01 SALT RANCH FEE 506-1035H (357'FNL & 607'FEL, SEC.10)
Area	COLORADO	Well	SALT RANCH FEE 506-1035H
Field	WELD COUNTY (NAD 83/TN)	Wellbore	SALT RANCH FEE 506-1035H PWB
Facility	SEC.10-T11N-R64W		

WELLPATH DATA (188 stations) † = interpolated/extrapolated station

MD [ft]	Inclination [°]	Azimuth [°]	TVD [ft]	Vert Sect [ft]	North [ft]	East [ft]	Grid East [US ft]	Grid North [US ft]	DLS [°/100ft]	Comments
0.00†	0.000	76.144	0.00	0.00	0.00	0.00	3269150.08	1587572.09	0.00	
23.00	0.000	76.144	23.00	0.00	0.00	0.00	3269150.08	1587572.09	0.00	Tie On
123.00†	0.000	76.144	123.00	0.00	0.00	0.00	3269150.08	1587572.09	0.00	
223.00†	0.000	76.144	223.00	0.00	0.00	0.00	3269150.08	1587572.09	0.00	
323.00†	0.000	76.144	323.00	0.00	0.00	0.00	3269150.08	1587572.09	0.00	
423.00†	0.000	76.144	423.00	0.00	0.00	0.00	3269150.08	1587572.09	0.00	
523.00†	0.000	76.144	523.00	0.00	0.00	0.00	3269150.08	1587572.09	0.00	
623.00†	0.000	76.144	623.00	0.00	0.00	0.00	3269150.08	1587572.09	0.00	
723.00†	0.000	76.144	723.00	0.00	0.00	0.00	3269150.08	1587572.09	0.00	
823.00†	0.000	76.144	823.00	0.00	0.00	0.00	3269150.08	1587572.09	0.00	
923.00†	0.000	76.144	923.00	0.00	0.00	0.00	3269150.08	1587572.09	0.00	
1023.00†	0.000	76.144	1023.00	0.00	0.00	0.00	3269150.08	1587572.09	0.00	
1123.00†	0.000	76.144	1123.00	0.00	0.00	0.00	3269150.08	1587572.09	0.00	
1223.00†	0.000	76.144	1223.00	0.00	0.00	0.00	3269150.08	1587572.09	0.00	
1323.00†	0.000	76.144	1323.00	0.00	0.00	0.00	3269150.08	1587572.09	0.00	
1423.00†	0.000	76.144	1423.00	0.00	0.00	0.00	3269150.08	1587572.09	0.00	
1523.00†	0.000	76.144	1523.00	0.00	0.00	0.00	3269150.08	1587572.09	0.00	
1623.00†	0.000	76.144	1623.00	0.00	0.00	0.00	3269150.08	1587572.09	0.00	
1723.00†	0.000	76.144	1723.00	0.00	0.00	0.00	3269150.08	1587572.09	0.00	
1823.00†	0.000	76.144	1823.00	0.00	0.00	0.00	3269150.08	1587572.09	0.00	
1923.00†	0.000	76.144	1923.00	0.00	0.00	0.00	3269150.08	1587572.09	0.00	
2000.00	0.000	76.144	2000.00	0.00	0.00	0.00	3269150.08	1587572.09	0.00	End of Tangent
2023.00†	0.345	76.144	2023.00	0.03	0.02	0.07	3269150.15	1587572.11	1.50	
2123.00†	1.845	76.144	2122.98	0.73	0.47	1.92	3269152.00	1587572.58	1.50	
2223.00†	3.345	76.144	2222.87	2.41	1.56	6.32	3269156.38	1587573.72	1.50	
2323.00†	4.845	76.144	2322.62	5.06	3.27	13.25	3269163.29	1587575.50	1.50	
2423.00†	6.345	76.144	2422.14	8.68	5.60	22.72	3269172.73	1587577.94	1.50	
2523.00†	7.845	76.144	2521.37	13.26	8.56	34.71	3269184.69	1587581.03	1.50	
2623.00†	9.345	76.144	2620.24	18.81	12.14	49.22	3269199.16	1587584.77	1.50	
2723.00†	10.845	76.144	2718.69	25.31	16.34	66.24	3269216.13	1587589.15	1.50	
2823.00†	12.345	76.144	2816.65	32.77	21.15	85.75	3269235.59	1587594.18	1.50	
2923.00†	13.845	76.144	2914.04	41.17	26.58	107.75	3269257.53	1587599.85	1.50	
3023.00†	15.345	76.144	3010.81	50.52	32.61	132.21	3269281.93	1587606.15	1.50	
3123.00†	16.845	76.144	3106.89	60.81	39.25	159.13	3269308.77	1587613.09	1.50	
3223.00†	18.345	76.144	3202.21	72.02	46.49	188.47	3269338.04	1587620.65	1.50	
3323.00†	19.845	76.144	3296.71	84.16	54.32	220.24	3269369.71	1587628.83	1.50	
3423.00†	21.345	76.144	3390.31	97.21	62.75	254.39	3269403.77	1587637.63	1.50	
3499.76	22.496	76.144	3461.52	107.84	69.61	282.21	3269431.51	1587644.80	1.50	End of Build
3523.00†	22.496	76.144	3482.99	111.14	71.74	290.84	3269440.12	1587647.02	0.00	
3623.00†	22.496	76.144	3575.38	125.33	80.90	327.99	3269477.17	1587656.59	0.00	
3723.00†	22.496	76.144	3667.77	139.53	90.07	365.14	3269514.22	1587666.16	0.00	
3823.00†	22.496	76.144	3760.16	153.73	99.23	402.29	3269551.26	1587675.73	0.00	
3923.00†	22.496	76.144	3852.55	167.92	108.39	439.44	3269588.31	1587685.31	0.00	
4023.00†	22.496	76.144	3944.94	182.12	117.55	476.59	3269625.36	1587694.88	0.00	
4123.00†	22.496	76.144	4037.34	196.31	126.72	513.74	3269662.41	1587704.45	0.00	

Planned Wellpath Report

SALT RANCH FEE 506-1035H (REV-A.0) PWP

Page 3 of 7

REFERENCE WELLPATH IDENTIFICATION			
Operator	CCRP OPERATING INC.	Slot	SLOT#01 SALT RANCH FEE 506-1035H (357'FNL & 607'FEL, SEC.10)
Area	COLORADO	Well	SALT RANCH FEE 506-1035H
Field	WELD COUNTY (NAD 83/TN)	Wellbore	SALT RANCH FEE 506-1035H PWB
Facility	SEC.10-T11N-R64W		

WELLPATH DATA (188 stations) † = interpolated/extrapolated station										
MD [ft]	Inclination [°]	Azimuth [°]	TVD [ft]	Vert Sect [ft]	North [ft]	East [ft]	Grid East [US ft]	Grid North [US ft]	DLS [°/100ft]	Comments
4223.00†	22.496	76.144	4129.73	210.51	135.88	550.89	3269699.45	1587714.02	0.00	
4323.00†	22.496	76.144	4222.12	224.70	145.04	588.04	3269736.50	1587723.59	0.00	
4423.00†	22.496	76.144	4314.51	238.90	154.21	625.18	3269773.55	1587733.16	0.00	
4523.00†	22.496	76.144	4406.90	253.10	163.37	662.33	3269810.59	1587742.73	0.00	
4623.00†	22.496	76.144	4499.29	267.29	172.53	699.48	3269847.64	1587752.30	0.00	
4723.00†	22.496	76.144	4591.68	281.49	181.70	736.63	3269884.69	1587761.87	0.00	
4823.00†	22.496	76.144	4684.07	295.68	190.86	773.78	3269921.74	1587771.44	0.00	
4923.00†	22.496	76.144	4776.46	309.88	200.02	810.93	3269958.78	1587781.02	0.00	
5023.00†	22.496	76.144	4868.85	324.07	209.19	848.08	3269995.83	1587790.59	0.00	
5123.00†	22.496	76.144	4961.24	338.27	218.35	885.23	3270032.88	1587800.16	0.00	
5223.00†	22.496	76.144	5053.63	352.47	227.51	922.38	3270069.93	1587809.73	0.00	
5323.00†	22.496	76.144	5146.02	366.66	236.68	959.53	3270106.97	1587819.30	0.00	
5423.00†	22.496	76.144	5238.41	380.86	245.84	996.68	3270144.02	1587828.87	0.00	
5523.00†	22.496	76.144	5330.80	395.05	255.00	1033.82	3270181.07	1587838.44	0.00	
5623.00†	22.496	76.144	5423.19	409.25	264.17	1070.97	3270218.11	1587848.01	0.00	
5723.00†	22.496	76.144	5515.58	423.44	273.33	1108.12	3270255.16	1587857.58	0.00	
5823.00†	22.496	76.144	5607.97	437.64	282.49	1145.27	3270292.21	1587867.15	0.00	
5923.00†	22.496	76.144	5700.36	451.84	291.66	1182.42	3270329.26	1587876.73	0.00	
6023.00†	22.496	76.144	5792.75	466.03	300.82	1219.57	3270366.30	1587886.30	0.00	
6123.00†	22.496	76.144	5885.14	480.23	309.98	1256.72	3270403.35	1587895.87	0.00	
6223.00†	22.496	76.144	5977.53	494.42	319.14	1293.87	3270440.40	1587905.44	0.00	
6239.38	22.496	76.144	5992.66	496.75	320.65	1299.95	3270446.46	1587907.01	0.00	End of Tangent
6323.00†	20.824	76.144	6070.38	508.20	328.04	1329.92	3270476.35	1587914.73	2.00	
6423.00†	18.824	76.144	6164.45	520.78	336.16	1362.84	3270509.18	1587923.21	2.00	
6523.00†	16.824	76.144	6259.64	532.14	343.49	1392.56	3270538.82	1587930.87	2.00	
6623.00†	14.824	76.144	6355.85	542.25	350.02	1419.03	3270565.22	1587937.69	2.00	
6723.00†	12.824	76.144	6452.95	551.12	355.74	1442.23	3270588.35	1587943.66	2.00	
6823.00†	10.824	76.144	6550.82	558.72	360.65	1462.12	3270608.19	1587948.79	2.00	
6923.00†	8.824	76.144	6649.35	565.05	364.73	1478.69	3270624.71	1587953.06	2.00	
7023.00†	6.824	76.144	6748.41	570.10	367.99	1491.90	3270637.89	1587956.46	2.00	
7123.00†	4.824	76.144	6847.89	573.86	370.42	1501.76	3270647.72	1587959.00	2.00	
7223.00†	2.824	76.144	6947.66	576.34	372.02	1508.23	3270654.17	1587960.67	2.00	
7323.00†	0.824	76.144	7047.61	577.52	372.78	1511.32	3270657.25	1587961.46	2.00	
7364.20	0.000	359.675	7088.80	577.63	372.85	1511.61	3270657.54	1587961.54	2.00	End of Drop
7423.00†	0.000	359.675	7147.61	577.63	372.85	1511.61	3270657.54	1587961.54	0.00	
7464.20	0.000	359.675	7188.80	577.63	372.85	1511.61	3270657.54	1587961.54	0.00	End of Tangent
7523.00†	4.704	359.675	7247.54	580.01	375.26	1511.59	3270657.50	1587963.95	8.00	
7623.00†	12.704	359.675	7346.31	594.98	390.39	1511.51	3270657.25	1587979.07	8.00	
7723.00†	20.704	359.675	7442.01	623.40	419.11	1511.35	3270656.77	1588007.79	8.00	
7823.00†	28.704	359.675	7532.79	664.73	460.86	1511.11	3270656.07	1588049.54	8.00	
7923.00†	36.704	359.675	7616.86	718.16	514.85	1510.80	3270655.18	1588103.52	8.00	
8023.00†	44.704	359.675	7692.61	782.65	580.01	1510.43	3270654.09	1588168.68	8.00	
8123.00†	52.704	359.675	7758.55	856.94	655.08	1510.01	3270652.84	1588243.74	8.00	
8223.00†	60.704	359.675	7813.40	939.60	738.60	1509.54	3270651.45	1588327.25	8.00	
8323.00†	68.704	359.675	7856.10	1029.00	828.93	1509.02	3270649.95	1588417.57	8.00	

Planned Wellpath Report

SALT RANCH FEE 506-1035H (REV-A.0) PWP
Page 4 of 7

REFERENCE WELLPATH IDENTIFICATION			
Operator	CCRP OPERATING INC.	Slot	SLOT#01 SALT RANCH FEE 506-1035H (357'FNL & 607'FEL, SEC.10)
Area	COLORADO	Well	SALT RANCH FEE 506-1035H
Field	WELD COUNTY (NAD 83/TN)	Wellbore	SALT RANCH FEE 506-1035H PWB
Facility	SEC.10-T11N-R64W		

WELLPATH DATA (188 stations) † = interpolated/extrapolated station										
MD [ft]	Inclination [°]	Azimuth [°]	TVD [ft]	Vert Sect [ft]	North [ft]	East [ft]	Grid East [US ft]	Grid North [US ft]	DLS [°/100ft]	Comments
8423.00†	76.704	359.675	7885.80	1123.41	924.33	1508.48	3270648.36	1588512.97	8.00	
8523.00†	84.704	359.675	7901.94	1221.00	1022.94	1507.93	3270646.72	1588611.56	8.00	
8589.20	90.000	359.675	7905.00†	1286.42	1089.04	1507.55	3270645.62	1588677.65	8.00	End of Build
8623.00†	90.000	359.675	7905.00	1319.87	1122.84	1507.36	3270645.05	1588711.46	0.00	
8723.00†	90.000	359.675	7905.00	1418.84	1222.84	1506.79	3270643.39	1588811.44	0.00	
8823.00†	90.000	359.675	7905.00	1517.81	1322.84	1506.23	3270641.72	1588911.43	0.00	
8923.00†	90.000	359.675	7905.00	1616.77	1422.84	1505.66	3270640.06	1589011.42	0.00	
9023.00†	90.000	359.675	7905.00	1715.74	1522.84	1505.09	3270638.39	1589111.41	0.00	
9123.00†	90.000	359.675	7905.00	1814.70	1622.83	1504.53	3270636.73	1589211.40	0.00	
9223.00†	90.000	359.675	7905.00	1913.67	1722.83	1503.96	3270635.06	1589311.39	0.00	
9323.00†	90.000	359.675	7905.00	2012.64	1822.83	1503.39	3270633.40	1589411.38	0.00	
9423.00†	90.000	359.675	7905.00	2111.60	1922.83	1502.83	3270631.73	1589511.37	0.00	
9523.00†	90.000	359.675	7905.00	2210.57	2022.83	1502.26	3270630.07	1589611.36	0.00	
9623.00†	90.000	359.675	7905.00	2309.53	2122.83	1501.69	3270628.40	1589711.34	0.00	
9723.00†	90.000	359.675	7905.00	2408.50	2222.82	1501.13	3270626.74	1589811.33	0.00	
9823.00†	90.000	359.675	7905.00	2507.47	2322.82	1500.56	3270625.07	1589911.32	0.00	
9923.00†	90.000	359.675	7905.00	2606.43	2422.82	1499.99	3270623.41	1590011.31	0.00	
10023.00†	90.000	359.675	7905.00	2705.40	2522.82	1499.43	3270621.74	1590111.30	0.00	
10123.00†	90.000	359.675	7905.00	2804.36	2622.82	1498.86	3270620.08	1590211.29	0.00	
10223.00†	90.000	359.675	7905.00	2903.33	2722.82	1498.30	3270618.41	1590311.28	0.00	
10323.00†	90.000	359.675	7905.00	3002.30	2822.81	1497.73	3270616.75	1590411.27	0.00	
10423.00†	90.000	359.675	7905.00	3101.26	2922.81	1497.16	3270615.08	1590511.26	0.00	
10523.00†	90.000	359.675	7905.00	3200.23	3022.81	1496.60	3270613.42	1590611.24	0.00	
10623.00†	90.000	359.675	7905.00	3299.19	3122.81	1496.03	3270611.75	1590711.23	0.00	
10723.00†	90.000	359.675	7905.00	3398.16	3222.81	1495.46	3270610.09	1590811.22	0.00	
10823.00†	90.000	359.675	7905.00	3497.13	3322.81	1494.90	3270608.42	1590911.21	0.00	
10923.00†	90.000	359.675	7905.00	3596.09	3422.81	1494.33	3270606.76	1591011.20	0.00	
11023.00†	90.000	359.675	7905.00	3695.06	3522.80	1493.76	3270605.09	1591111.19	0.00	
11123.00†	90.000	359.675	7905.00	3794.03	3622.80	1493.20	3270603.42	1591211.18	0.00	
11223.00†	90.000	359.675	7905.00	3892.99	3722.80	1492.63	3270601.76	1591311.17	0.00	
11323.00†	90.000	359.675	7905.00	3991.96	3822.80	1492.06	3270600.09	1591411.16	0.00	
11423.00†	90.000	359.675	7905.00	4090.92	3922.80	1491.50	3270598.43	1591511.14	0.00	
11523.00†	90.000	359.675	7905.00	4189.89	4022.80	1490.93	3270596.76	1591611.13	0.00	
11623.00†	90.000	359.675	7905.00	4288.86	4122.79	1490.36	3270595.10	1591711.12	0.00	
11723.00†	90.000	359.675	7905.00	4387.82	4222.79	1489.80	3270593.43	1591811.11	0.00	
11823.00†	90.000	359.675	7905.00	4486.79	4322.79	1489.23	3270591.77	1591911.10	0.00	
11923.00†	90.000	359.675	7905.00	4585.75	4422.79	1488.67	3270590.10	1592011.09	0.00	
12023.00†	90.000	359.675	7905.00	4684.72	4522.79	1488.10	3270588.44	1592111.08	0.00	
12123.00†	90.000	359.675	7905.00	4783.69	4622.79	1487.53	3270586.77	1592211.07	0.00	
12223.00†	90.000	359.675	7905.00	4882.65	4722.78	1486.97	3270585.11	1592311.06	0.00	
12323.00†	90.000	359.675	7905.00	4981.62	4822.78	1486.40	3270583.44	1592411.04	0.00	
12423.00†	90.000	359.675	7905.00	5080.58	4922.78	1485.83	3270581.78	1592511.03	0.00	
12523.00†	90.000	359.675	7905.00	5179.55	5022.78	1485.27	3270580.11	1592611.02	0.00	
12623.00†	90.000	359.675	7905.00	5278.52	5122.78	1484.70	3270578.45	1592711.01	0.00	
12723.00†	90.000	359.675	7905.00	5377.48	5222.78	1484.13	3270576.78	1592811.00	0.00	

Planned Wellpath Report

SALT RANCH FEE 506-1035H (REV-A.0) PWP
Page 5 of 7

REFERENCE WELLPATH IDENTIFICATION

Operator	CCRP OPERATING INC.	Slot	SLOT#01 SALT RANCH FEE 506-1035H (357'FNL & 607'FEL, SEC.10)
Area	COLORADO	Well	SALT RANCH FEE 506-1035H
Field	WELD COUNTY (NAD 83/TN)	Wellbore	SALT RANCH FEE 506-1035H PWB
Facility	SEC.10-T11N-R64W		

WELLPATH DATA (188 stations) † = interpolated/extrapolated station

MD [ft]	Inclination [°]	Azimuth [°]	TVD [ft]	Vert Sect [ft]	North [ft]	East [ft]	Grid East [US ft]	Grid North [US ft]	DLS [°/100ft]	Comments
12823.00†	90.000	359.675	7905.00	5476.45	5322.77	1483.57	3270575.12	1592910.99	0.00	
12923.00†	90.000	359.675	7905.00	5575.41	5422.77	1483.00	3270573.45	1593010.98	0.00	
13023.00†	90.000	359.675	7905.00	5674.38	5522.77	1482.43	3270571.79	1593110.97	0.00	
13123.00†	90.000	359.675	7905.00	5773.35	5622.77	1481.87	3270570.12	1593210.96	0.00	
13223.00†	90.000	359.675	7905.00	5872.31	5722.77	1481.30	3270568.46	1593310.95	0.00	
13323.00†	90.000	359.675	7905.00	5971.28	5822.77	1480.73	3270566.79	1593410.93	0.00	
13423.00†	90.000	359.675	7905.00	6070.24	5922.77	1480.17	3270565.13	1593510.92	0.00	
13523.00†	90.000	359.675	7905.00	6169.21	6022.76	1479.60	3270563.46	1593610.91	0.00	
13623.00†	90.000	359.675	7905.00	6268.18	6122.76	1479.03	3270561.80	1593710.90	0.00	
13723.00†	90.000	359.675	7905.00	6367.14	6222.76	1478.47	3270560.13	1593810.89	0.00	
13823.00†	90.000	359.675	7905.00	6466.11	6322.76	1477.90	3270558.47	1593910.88	0.00	
13923.00†	90.000	359.675	7905.00	6565.07	6422.76	1477.34	3270556.80	1594010.87	0.00	
14023.00†	90.000	359.675	7905.00	6664.04	6522.76	1476.77	3270555.14	1594110.86	0.00	
14123.00†	90.000	359.675	7905.00	6763.01	6622.75	1476.20	3270553.47	1594210.85	0.00	
14223.00†	90.000	359.675	7905.00	6861.97	6722.75	1475.64	3270551.81	1594310.83	0.00	
14323.00†	90.000	359.675	7905.00	6960.94	6822.75	1475.07	3270550.14	1594410.82	0.00	
14423.00†	90.000	359.675	7905.00	7059.90	6922.75	1474.50	3270548.48	1594510.81	0.00	
14523.00†	90.000	359.675	7905.00	7158.87	7022.75	1473.94	3270546.81	1594610.80	0.00	
14623.00†	90.000	359.675	7905.00	7257.84	7122.75	1473.37	3270545.15	1594710.79	0.00	
14723.00†	90.000	359.675	7905.00	7356.80	7222.74	1472.80	3270543.48	1594810.78	0.00	
14823.00†	90.000	359.675	7905.00	7455.77	7322.74	1472.24	3270541.82	1594910.77	0.00	
14923.00†	90.000	359.675	7905.00	7554.73	7422.74	1471.67	3270540.15	1595010.76	0.00	
15023.00†	90.000	359.675	7905.00	7653.70	7522.74	1471.10	3270538.49	1595110.75	0.00	
15123.00†	90.000	359.675	7905.00	7752.67	7622.74	1470.54	3270536.82	1595210.73	0.00	
15223.00†	90.000	359.675	7905.00	7851.63	7722.74	1469.97	3270535.16	1595310.72	0.00	
15323.00†	90.000	359.675	7905.00	7950.60	7822.73	1469.40	3270533.49	1595410.71	0.00	
15423.00†	90.000	359.675	7905.00	8049.56	7922.73	1468.84	3270531.83	1595510.70	0.00	
15523.00†	90.000	359.675	7905.00	8148.53	8022.73	1468.27	3270530.16	1595610.69	0.00	
15623.00†	90.000	359.675	7905.00	8247.50	8122.73	1467.70	3270528.50	1595710.68	0.00	
15723.00†	90.000	359.675	7905.00	8346.46	8222.73	1467.14	3270526.83	1595810.67	0.00	
15823.00†	90.000	359.675	7905.00	8445.43	8322.73	1466.57	3270525.17	1595910.66	0.00	
15923.00†	90.000	359.675	7905.00	8544.39	8422.73	1466.01	3270523.50	1596010.65	0.00	
16023.00†	90.000	359.675	7905.00	8643.36	8522.72	1465.44	3270521.84	1596110.63	0.00	
16123.00†	90.000	359.675	7905.00	8742.33	8622.72	1464.87	3270520.17	1596210.62	0.00	
16223.00†	90.000	359.675	7905.00	8841.29	8722.72	1464.31	3270518.51	1596310.61	0.00	
16323.00†	90.000	359.675	7905.00	8940.26	8822.72	1463.74	3270516.84	1596410.60	0.00	
16423.00†	90.000	359.675	7905.00	9039.23	8922.72	1463.17	3270515.18	1596510.59	0.00	
16523.00†	90.000	359.675	7905.00	9138.19	9022.72	1462.61	3270513.51	1596610.58	0.00	
16623.00†	90.000	359.675	7905.00	9237.16	9122.71	1462.04	3270511.84	1596710.57	0.00	
16723.00†	90.000	359.675	7905.00	9336.12	9222.71	1461.47	3270510.18	1596810.56	0.00	
16823.00†	90.000	359.675	7905.00	9435.09	9322.71	1460.91	3270508.51	1596910.55	0.00	
16923.00†	90.000	359.675	7905.00	9534.06	9422.71	1460.34	3270506.85	1597010.53	0.00	
17023.00†	90.000	359.675	7905.00	9633.02	9522.71	1459.77	3270505.18	1597110.52	0.00	
17123.00†	90.000	359.675	7905.00	9731.99	9622.71	1459.21	3270503.52	1597210.51	0.00	
17223.00†	90.000	359.675	7905.00	9830.95	9722.70	1458.64	3270501.85	1597310.50	0.00	

Planned Wellpath Report

SALT RANCH FEE 506-1035H (REV-A.0) PWP
Page 6 of 7

REFERENCE WELLPATH IDENTIFICATION			
Operator	CCRP OPERATING INC.	Slot	SLOT#01 SALT RANCH FEE 506-1035H (357'FNL & 607'FEL, SEC.10)
Area	COLORADO	Well	SALT RANCH FEE 506-1035H
Field	WELD COUNTY (NAD 83/TN)	Wellbore	SALT RANCH FEE 506-1035H PWB
Facility	SEC.10-T11N-R64W		

WELLPATH DATA (188 stations) † = interpolated/extrapolated station										
MD [ft]	Inclination [°]	Azimuth [°]	TVD [ft]	Vert Sect [ft]	North [ft]	East [ft]	Grid East [US ft]	Grid North [US ft]	DLS [°/100ft]	Comments
17323.00†	90.000	359.675	7905.00	9929.92	9822.70	1458.07	3270500.19	1597410.49	0.00	
17423.00†	90.000	359.675	7905.00	10028.89	9922.70	1457.51	3270498.52	1597510.48	0.00	
17523.00†	90.000	359.675	7905.00	10127.85	10022.70	1456.94	3270496.86	1597610.47	0.00	
17623.00†	90.000	359.675	7905.00	10226.82	10122.70	1456.37	3270495.19	1597710.46	0.00	
17723.00†	90.000	359.675	7905.00	10325.78	10222.70	1455.81	3270493.53	1597810.45	0.00	
17823.00†	90.000	359.675	7905.00	10424.75	10322.69	1455.24	3270491.86	1597910.43	0.00	
17923.00†	90.000	359.675	7905.00	10523.72	10422.69	1454.68	3270490.20	1598010.42	0.00	
17953.10	90.000	359.675	7905.00	10553.51	10452.80	1454.50	3270489.70	1598040.52	0.00	End of Tangent

TARGETS									
Name	MD [ft]	TVD [ft]	North [ft]	East [ft]	Grid East [US ft]	Grid North [US ft]	Latitude	Longitude	Shape
SEC.02-T11N-R64W		0.00	0.00	0.00	3269150.08	1587572.09	40°56'31.888"N	104°31'32.869"W	polygon
SEC.03-T11N-R64W		0.00	0.00	0.00	3269150.08	1587572.09	40°56'31.888"N	104°31'32.869"W	polygon
SEC.10-T11N-R64W		0.00	0.00	0.00	3269150.08	1587572.09	40°56'31.888"N	104°31'32.869"W	polygon
SEC.15-T11N-R64W		0.00	0.00	0.00	3269150.08	1587572.09	40°56'31.888"N	104°31'32.869"W	polygon
SEC.34-T12N-R64W		0.00	0.00	0.00	3269150.08	1587572.09	40°56'31.888"N	104°31'32.869"W	polygon
SEC.35-T12N-R64W		0.00	0.00	0.00	3269150.08	1587572.09	40°56'31.888"N	104°31'32.869"W	polygon
SALT RANCH FEE 201-1015H HARDLINES (300' SETBACKS)		7905.00	0.00	0.00	3269150.08	1587572.09	40°56'31.888"N	104°31'32.869"W	polygon
SALT RANCH FEE 502-1034H HARDLINES (600' SETBACKS)		7905.00	0.00	0.00	3269150.08	1587572.09	40°56'31.888"N	104°31'32.869"W	polygon
2) SALT RANCH FEE 506-1035H BHL REV-1 (600'FNL & 640'FWL, SEC.35)	17953.10	7905.00	10452.80	1454.50	3270489.70	1598040.52	40°58'15.168"N	104°31'13.908"W	point
SALT RANCH FEE 506-1035H HARDLINES (600' SETBACKS)		7905.00	0.00	0.00	3269150.08	1587572.09	40°56'31.888"N	104°31'32.869"W	polygon
1) SALT RANCH FEE 506-1035H LPL REV-1 (735'FSL & 940'FWL, SEC.02)	8589.20	7905.00	1089.04	1507.55	3270645.62	1588677.65	40°56'42.648"N	104°31'13.224"W	point

SURVEY PROGRAM - Ref Wellbore: SALT RANCH FEE 506-1035H PWB Ref Wellpath: SALT RANCH FEE 506-1035H (REV-A.0) PWP				
Start MD [ft]	End MD [ft]	Positional Uncertainty Model	Log Name/Comment	Wellbore
23.00	18053.31	BHI NaviTrak (Rotating+Axial Corr)		SALT RANCH FEE 506-1035H PWB

Planned Wellpath Report

SALT RANCH FEE 506-1035H (REV-A.0) PWP

Page 7 of 7

REFERENCE WELLPATH IDENTIFICATION			
Operator	CCRP OPERATING INC.	Slot	SLOT#01 SALT RANCH FEE 506-1035H (357'FNL & 607'FEL, SEC.10)
Area	COLORADO	Well	SALT RANCH FEE 506-1035H
Field	WELD COUNTY (NAD 83/TN)	Wellbore	SALT RANCH FEE 506-1035H PWB
Facility	SEC.10-T11N-R64W		

DESIGN COMMENTS				
MD [ft]	Inclination [°]	Azimuth [°]	TVD [ft]	Comment
23.00	0.000	76.144	23.00	Tie On
2000.00	0.000	76.144	2000.00	End of Tangent
3499.76	22.496	76.144	3461.52	End of Build
6239.38	22.496	76.144	5992.66	End of Tangent
7364.20	0.000	359.675	7088.80	End of Drop
7464.20	0.000	359.675	7188.80	End of Tangent
8589.20	90.000	359.675	7905.00	End of Build
17953.10	90.000	359.675	7905.00	End of Tangent